

MODEL : PK67  
List No : 0803-01

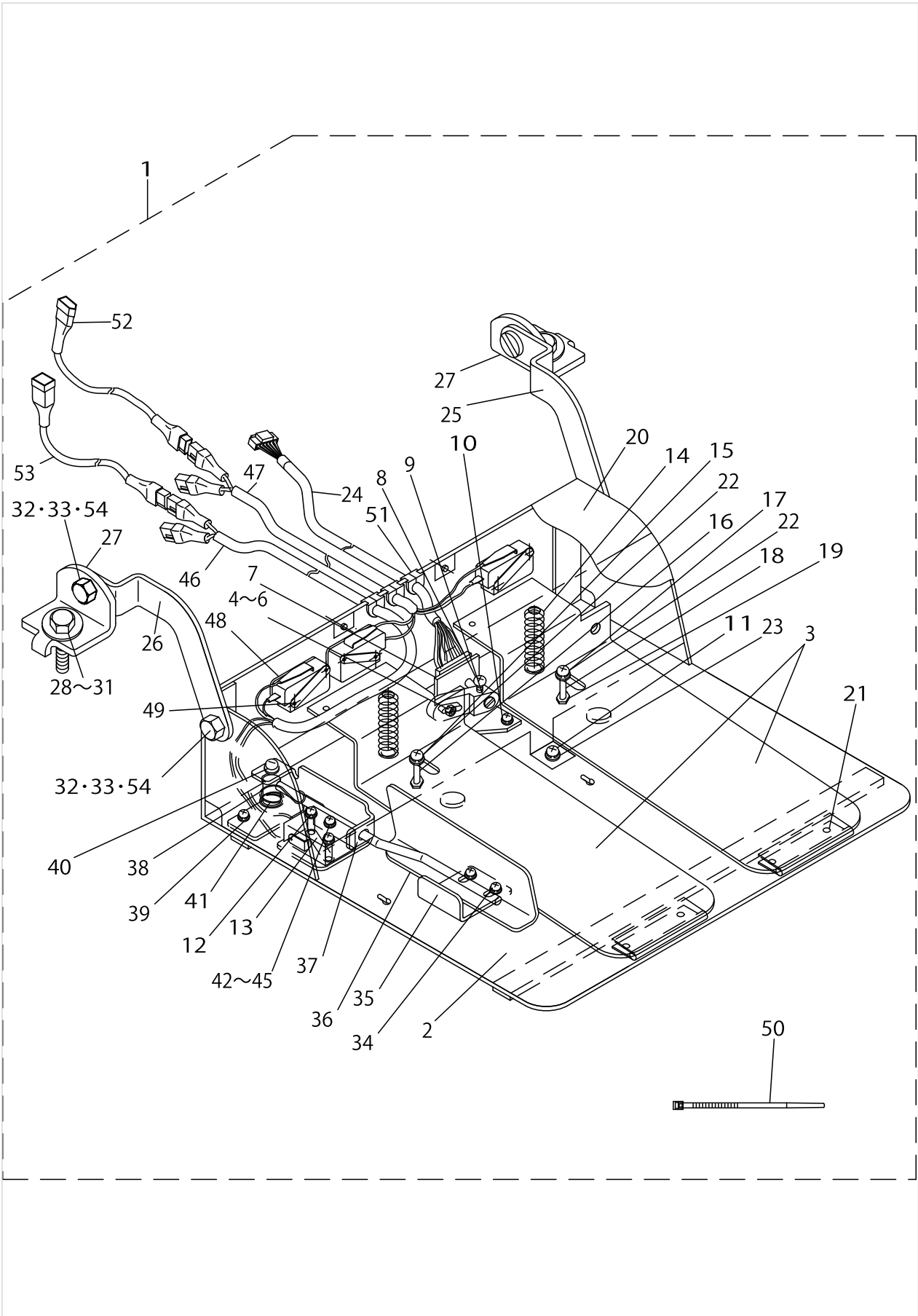
# PARTS LIST

Published:09/10/2017

## CONTENTS

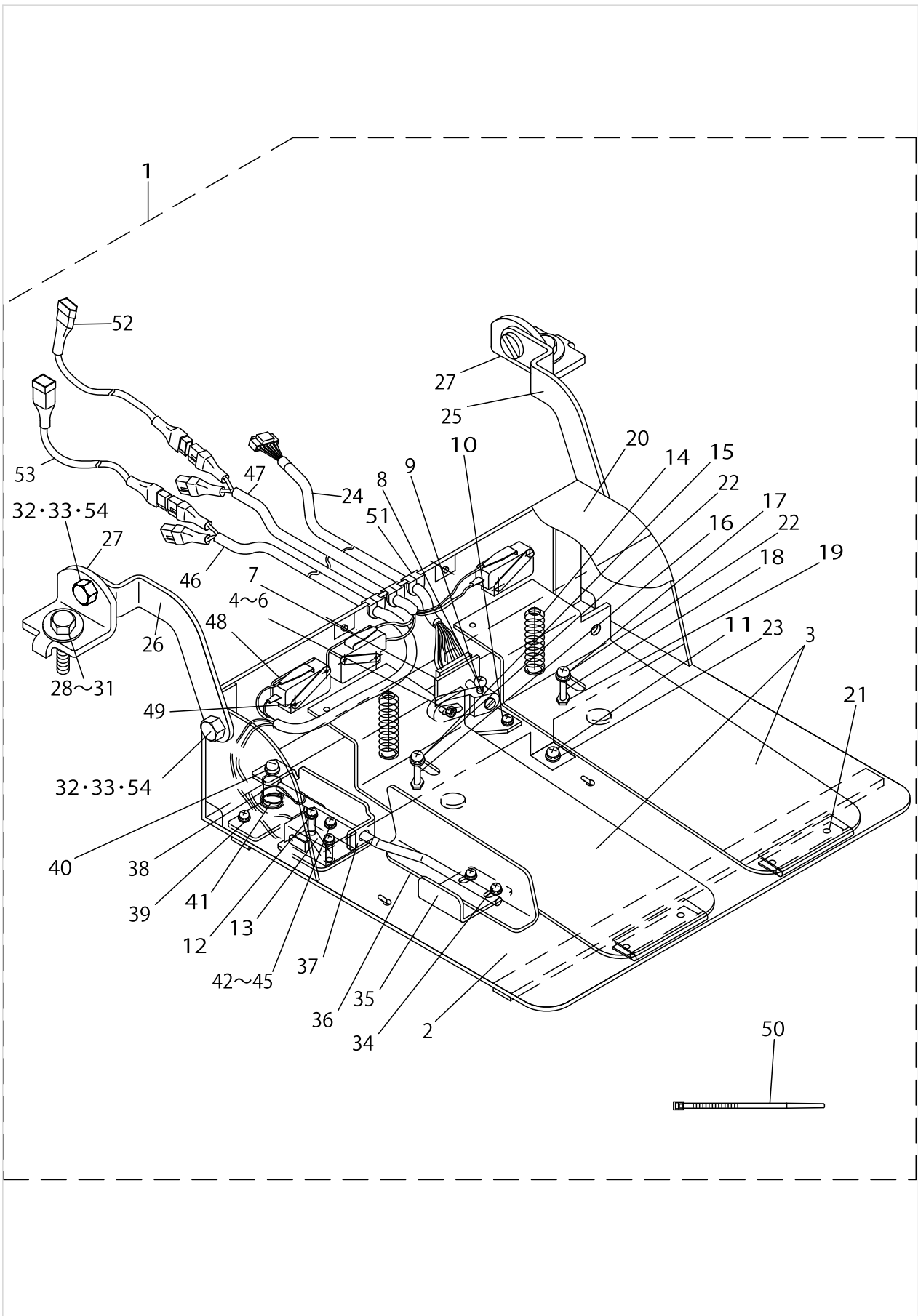
---

PK67 .....	1
HOW TO MAKE USE OF THIS PARTS LIST .....	5



PK67

No.	Parts No.	Parts name	Remarks	Level	Cons	Qty
1	GPK670010B0	2-JOINT PEDAL ASM.				1
2	GPK670010A0A	PEDAL BASE ASM.		*		1
3	GPK260030AA	PEDAL		*		2
4	GPK12005000	PEDAL LINK PIN		*		1
5	NM6040001SC	NUT M4		*		1
6	NM6040003SC	NUT M4		*		1
7	GPK12006000	VOLUME INSTALLING PLATE		*		1
8	SM4030801SN	SCREW M3X0.5 L=8		*		1
9	M2004110000	VOLUME LINK		*		1
10	SL4030681SC	SCREW M3 L=6		*		2
11	SL4040691SC	SCREW M4 X 6		*		3
12	SL4031691SC	SCREW M3X0.5 L=16		*		4
13	11102308	REVERSE FEED SWITCH PLATE		*		4
14	GPK14013000	PEDAL SPRING		*		2
15	SL4043091SC	SCREW		*		1
16	GPK26027000	COLLAR		*		1
17	SL4042591SC	SCREW M4X0.7 L=25		*		1
18	GPK26026000	SWITCH PEDAL GUIDE COLLAR		*		1
19	NM6040003SC	NUT M4		*		2
20	GPK610020A0	SWITCH COVER, 61		*		1
21	SM1030501SC	SCREW M3X0.5 L=5		*		4
22	GHP03537000	TUBE JOINT GASKET		*		2
23	WP0430801SC	WASHER M4		*		1
24	GPK260130A0A	SENSOR VOLUME ASM.		*		1
25	GPK1800600AA	PEDAL BASE JOINT, RIGHT		*		1
26	GPK1800700AA	PEDAL BASE JOINT, LEFT		*		1
27	11159001	PEDAL SHAFT BRACKET		*		2
28	SM9082023SE	SCREW M8 L=20		*		2
29	WP0871602SE	WASHER 8.7X18X1.6		*		4
30	WS0861410KR	SPRING WASHER 8.6X15X1.4		*		2
31	NM6080721SE	NUT M8		*		2
32	SM9081620SE	SCREW M8 L=16		*		4
33	NM6080002SE	SET NUT (RIGHT)FOR FORK ROD		*		4
34	SL4040891SC	SCREW M4X8		*		2
35	GPK2600800A	THREAD CUTTER SWITCH STOPPER,W		*		1
36	GPK2600700A	THREAD CUTTER SWITCH LEVER, W		*		1
37	GPK26009000	SWITCH BASE		*		1
38	GPK26011000	SWITCH SPRING		*		1
39	SL4040891SC	SCREW M4X8		*		1
40	SS4111215SP	SCREW 11/64-40 L=12		*		1
41	GPK26010000	SWITCH SHAFT		*		1
42	SM4041201SC	SCREW M4X0.7 L=12		*		1
43	GPK26028000	SWITCH BASE COLLAR		*		1
44	WP0430801SC	WASHER M4		*		1
45	NM6040003SC	NUT M4		*		1
46	GPK670070A0	SWITCH ASM.		*		1
47	GPK670060A0	SWITCH ASM.		*		1



PK67

No.	Parts No.	Parts name	Remarks	Level	Cons	Qty
48	GPK61007000	MICRO SWITCH SPACER		*		2
49	SL4032081SC	SCREW M3 L=20		*		4
50	EA9500B0200	CABLE BAND 150		*		6
51	GPK26023000	BUSH		*		3
52	GPK670040A0	RELAY CODE A ASM.		*		1
53	GPK670050A0	RELAY CODE B ASM.		*		1
54	GPK26022000	JOINT FITTING COLLAR		*		4

## HOW TO MAKE USE OF THIS PARTS LIST

1.As to "#01" and "#02" refer to the "Note" given at the bottom of the respective pages.

2.Codes on the "Qty" column

- Each numeral indicates the number of parts required.
- "0.1" and "2.5" indicate the length (in meters) of the respective parts.

3.Parentheses mean that the corresponding part is a subpart that constructs an assembly part.

4.Dotted lines on the Figures indicate assembly parts.

1. リストページの# 0 1、# 0 2の印は、ページ下の"注記"の説明を参照下さい。
2. 数量欄の数字は、個数を表し、0. 1、2. 5等の数値は、長さ（単位メートル）を表します。
3. 数量欄の（ ）は、組部品を構成している子部品であることを意味します。
4. イラストページの-----枠は、組構成であることを意味します。

# NUMERICAL INDEX OF PARTS

PART NO	PAGE	REF NO.	PART NO	PAGE	REF NO.
11102308	2	13	SM9082023SE	2	28~31
11159001	2	27	SS4111215SP	2	40
EA9500B0200	4	50	WP0430801SC	2	42~45
GHP03537000	2	22	WP0871602SE	2	28~31
GPK12005000	2	4~6	WS0861410KR	2	28~31
GPK12006000	2	7			
GPK14013000	2	14			
GPK1800600AA	2	25			
GPK1800700AA	2	26			
GPK260030AA	2	3			
GPK2600700A	2	36			
GPK2600800A	2	35			
GPK26009000	2	37			
GPK26010000	2	41			
GPK26011000	2	38			
GPK260130A0A	2	24			
GPK26022000	4	32·33·54			
GPK26023000	4	51			
GPK26026000	2	18			
GPK26027000	2	16			
GPK26028000	2	42~45			
GPK610020A0	2	20			
GPK61007000	4	48			
GPK670010A0A	2	2			
GPK670010B0	2	1			
GPK670040A0	4	52			
GPK670050A0	4	53			
GPK670060A0	2	47			
GPK670070A0	2	46			
M2004110000	2	9			
NM6040001SC	2	4~6			
NM6040003SC	2	42~45			
NM6080002SE	2	32·33·54			
NM6080721SE	2	28~31			
SL4030681SC	2	10			
SL4031691SC	2	12			
SL4032081SC	4	49			
SL4040691SC	2	11			
SL4040891SC	2	39			
SL4042591SC	2	17			
SL4043091SC	2	15			
SM1030501SC	2	21			
SM4030801SN	2	8			
SM4041201SC	2	42~45			
SM9081620SE	2	32·33·54			