

MODEL : TU-273

List No : 0527-06

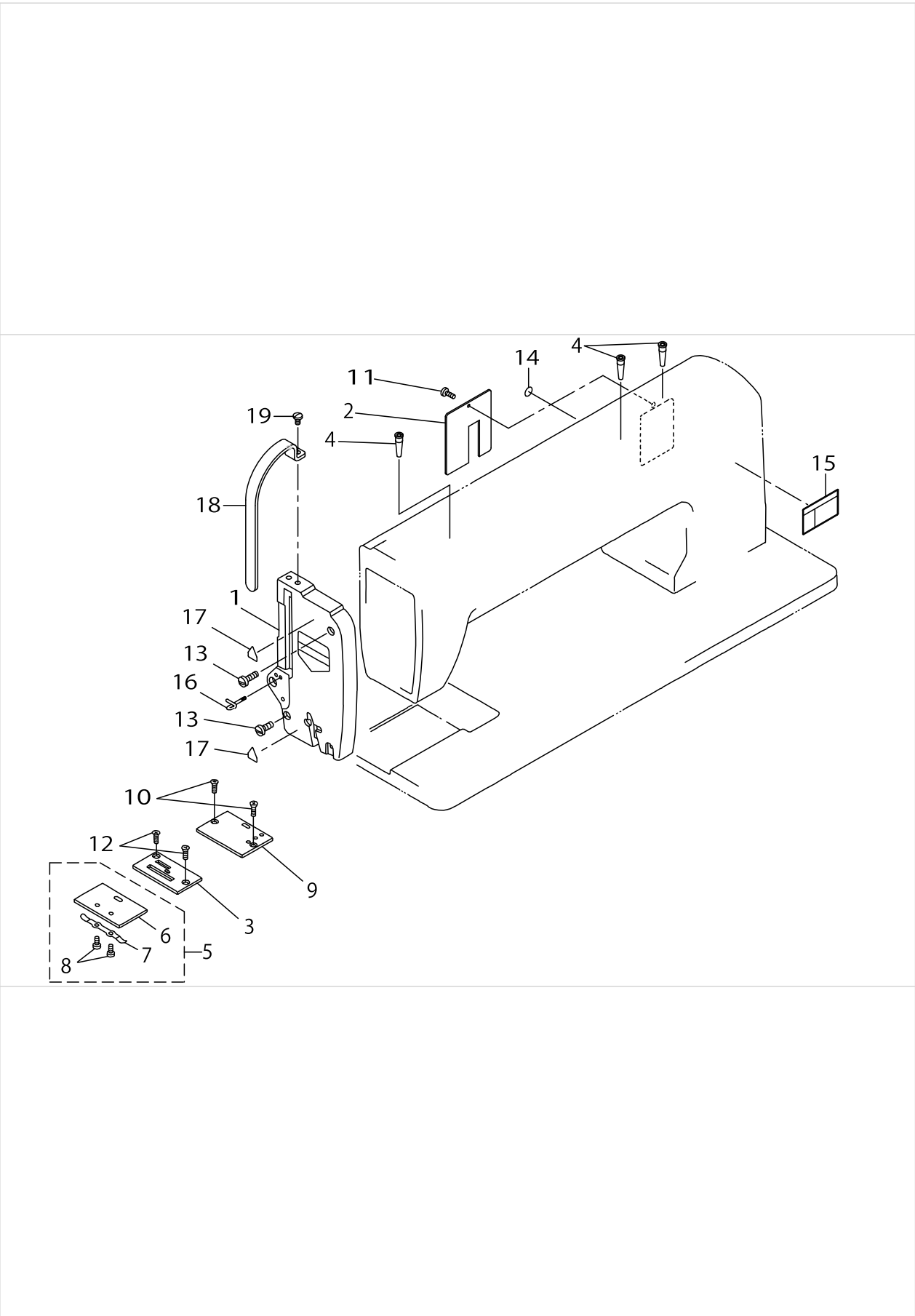
PARTS LIST

Published:09/10/2017

CONTENTS

FRAME & MISCELLANEOUS COVER COMPONENTS	1
MAIN SHAFT COMPONENTS	3
NEEDLE BAR COMPONENTS	5
UPPER FEED MECHANISM COMPONENTS (1).....	7
UPPER FEED MECHANISM COMPONENTS (2).....	9
PRESSURE BAR COMPONENTS.....	13
FEED MECHANISM COMPONENTS.....	15
FEED REGULATOR MECHANISM COMPONENTS.....	19
HOOK DRIVING SHAFT COMPONENTS	21
THREAD TENSION COMPONENTS	23
THREAD WINDER & THREAD GUIDE COMPONENTS	25
KNEE LIFTER & OIL PAN COMPONENTS.....	27
BELT COVER COMPONENTS.....	29
THREAD STAND COMPONENTS.....	31
TABLE COMPONENTS.....	33
ACCESSORIES PARTS COMPONENTS (1).....	35
ACCESSORIES PARTS COMPONENTS (2).....	37
LIST FOR INFORMATION OF CHANGE.....	39
HOW TO MAKE USE OF THIS PARTS LIST	40

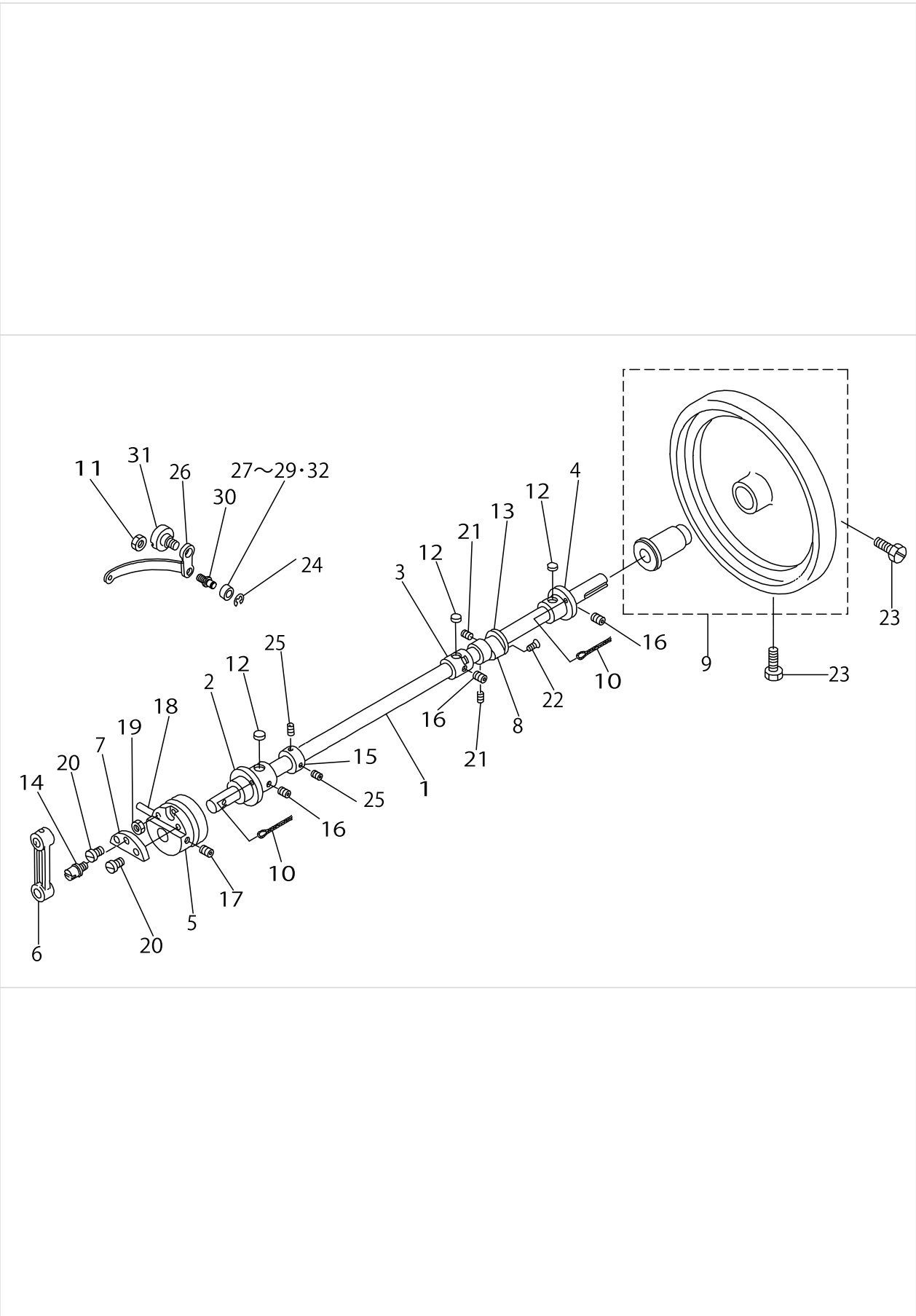
FRAME & MISCELLANEOUS COVER COMPONENTS



FRAME & MISCELLANEOUS COVER COMPONENTS

No.	Parts No.	Parts name	Remarks	Level	Cons	Qty
1	21068259	FACE PLATE ASM.				1
2	21068309	SIDE COVER				1
3	21040407	THROAT PLATE				1
4	A3243997C00	REAR METAL OIL PIPE				3
5	21044151	SLIDE PLATE ASM.A				1
6	21044102	SLIDE PLATE A		*		1
7	21044201	SPRING		*		1
8	SS7060310SP	SCREW 3/32-56 L=3		*		2
9	21044300	SLIDE PLATE B				1
10	SS2110915SP	SCREW 11/64-40 L=8.5				2
11	SS7090710SP	SCREW 9/64-40 L= 6.8				1
12	SS2110915SP	SCREW 11/64-40 L=8.5				2
13	SS6151920SP	SCREW 15/64-28 L=19.0				2
14	22901805	GROUND MARK				1
15	CM301200002	SAFETY LABEL_L				1
16	21059514	THREAD RACK				1
17	CM300200001	FINGER INJURY CAUTION LABLE (16)	FOR USE IN JAPAN,JE			2
18	40099160	THREAD TAKE-UP COVER				1
19	SS7110710SP	SCREW 11/64-40 L=7				2

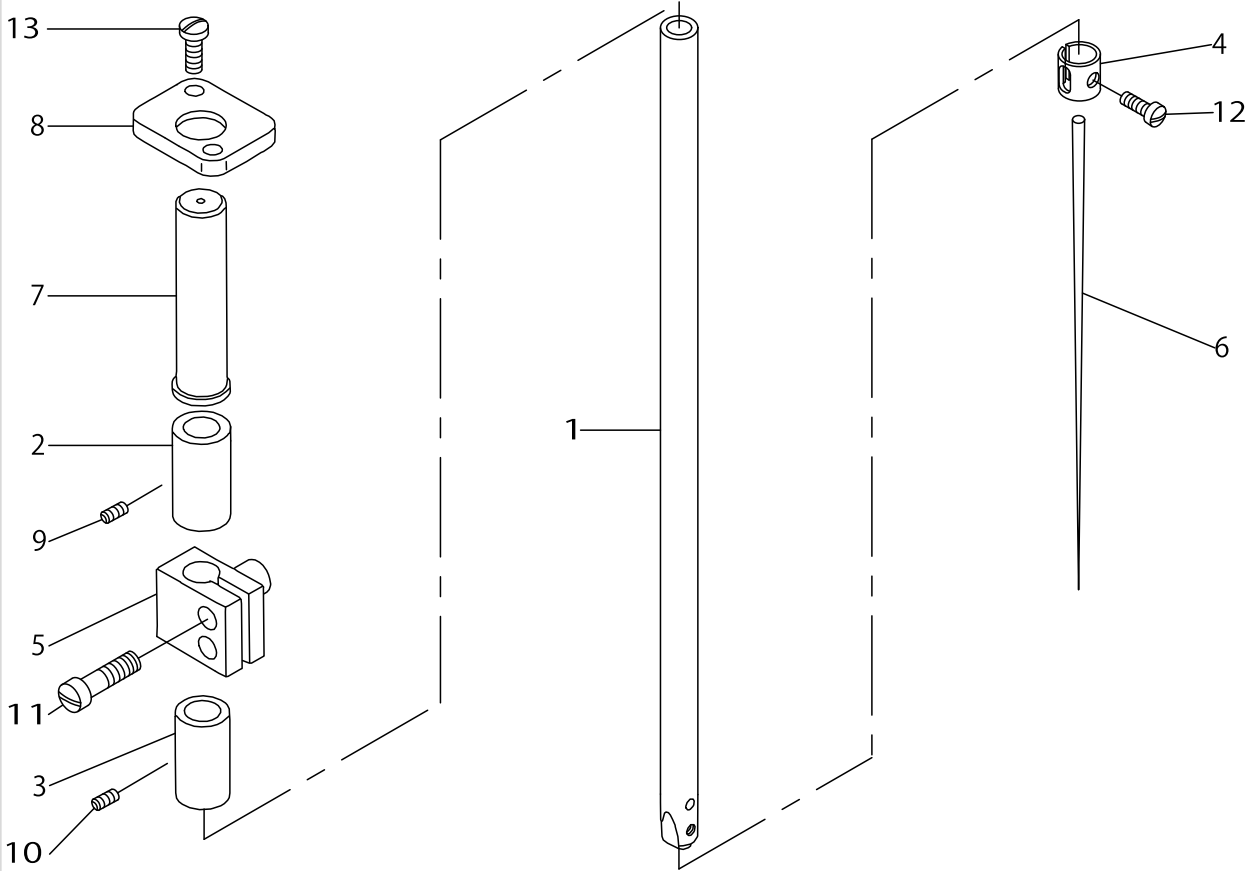
MAIN SHAFT COMPONENTS



MAIN SHAFT COMPONENTS

No.	Parts No.	Parts name	Remarks	Level	Cons	Qty
1	21044508	MAIN SHAFT				1
2	21044607	MAIN SHAFT BUSHING, FRONT				1
3	21044706	MAIN SHAFT BUSHING, CENTER				1
4	21044805	MAIN SHAFT BUSHING, REAR				1
5	21044904	THREAD TAKE-UP CAM				1
6	21045000	NEEDLE BAR CRANK ROD				1
7	21045109	CRANK PLATE				1
8	21045208	FEED ECCENTRIC CAM				1
9	21067855	HAND WHEEL COMPL.				1
10	CQ202000000	OIL WICK				0.1
11	NS6680410SP	NUT 9/32-28				1
12	21045406	FELT				3
13	21045505	SIDE PLATE				1
14	21045604	NEEDLE BAR CRANK SHAFT				1
15	21045703	THRUST COLLAR				1
16	SS8151550SP	SCREW 15/64-28 L=15				3
17	SS8660612TP	SCREW 1/4-40 L=6				2
18	PT0405600SH	TAPER PIN				1
19	NS6680410SP	NUT 9/32-28				1
20	SS1681140SP	SCREW 9/32-28 L=11				2
21	SS8150710SP	SCREW 15/64-28 L=7				2
22	SS2110915SP	SCREW 11/64-40 L=8.5				2
23	SS9702110SP	SCREW				2
24	RE0400000K0	E-RING 4				1
25	SS8660610TP	SCREW 1/4-40 L=6				2
26	21045901	THREAD TAKE-UP LEVER				1
27	21046008	BALANCE ROLLER.				1
28	21046107	ROLLER	SELECTIVE PART			1
29	21046206	ROLLER	SELECTIVE PART			1
30	21046313	ROLLER STUD				1
31	SD1070901TP	HINGE SCREW				1
32	40027078	ROLLER	SELECTIVE PART			1

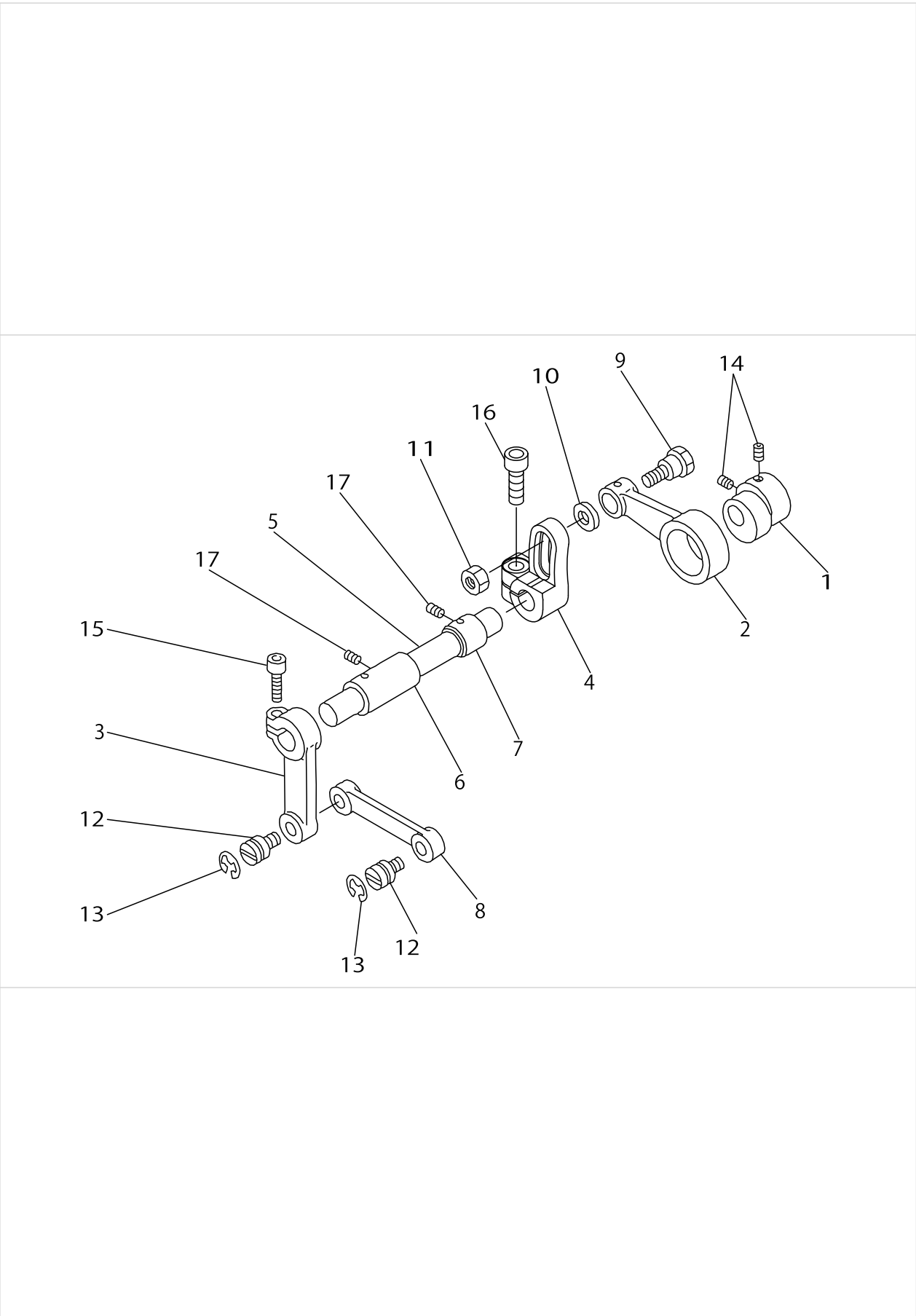
NEEDLE BAR COMPONENTS



NEEDLE BAR COMPONENTS

No.	Parts No.	Parts name	Remarks	Level	Cons	Qty
1	21046503	NEEDLE BAR				1
2	21046602	NEEDLE BAR BUSHING, UPPER				1
3	21046701	NEEDLE BAR BUSHING, LOWER				1
4	21040704	NEEDLE BAR THREAD GUIDE				1
5	21046800	NEEDLE BAR CONNECTION				1
6	MC532002300	NEEDLE (794 NM=230)				1
7	B1506059000	PRESSER BAR COVER				1
8	21040803	COVER PLATE				1
9	SS8150310SP	SCREW 15/64-28 L= 3.4				1
10	SS8660340SP	SCREW 1/4-40 L= 2.5				1
11	SS6151440SP	SCREW 15/64-28 L=14				2
12	SS6110710TP	SCREW 11/64-40 L= 6.5				1
13	SS6111210SP	SCREW 11/64-40 L=12				2

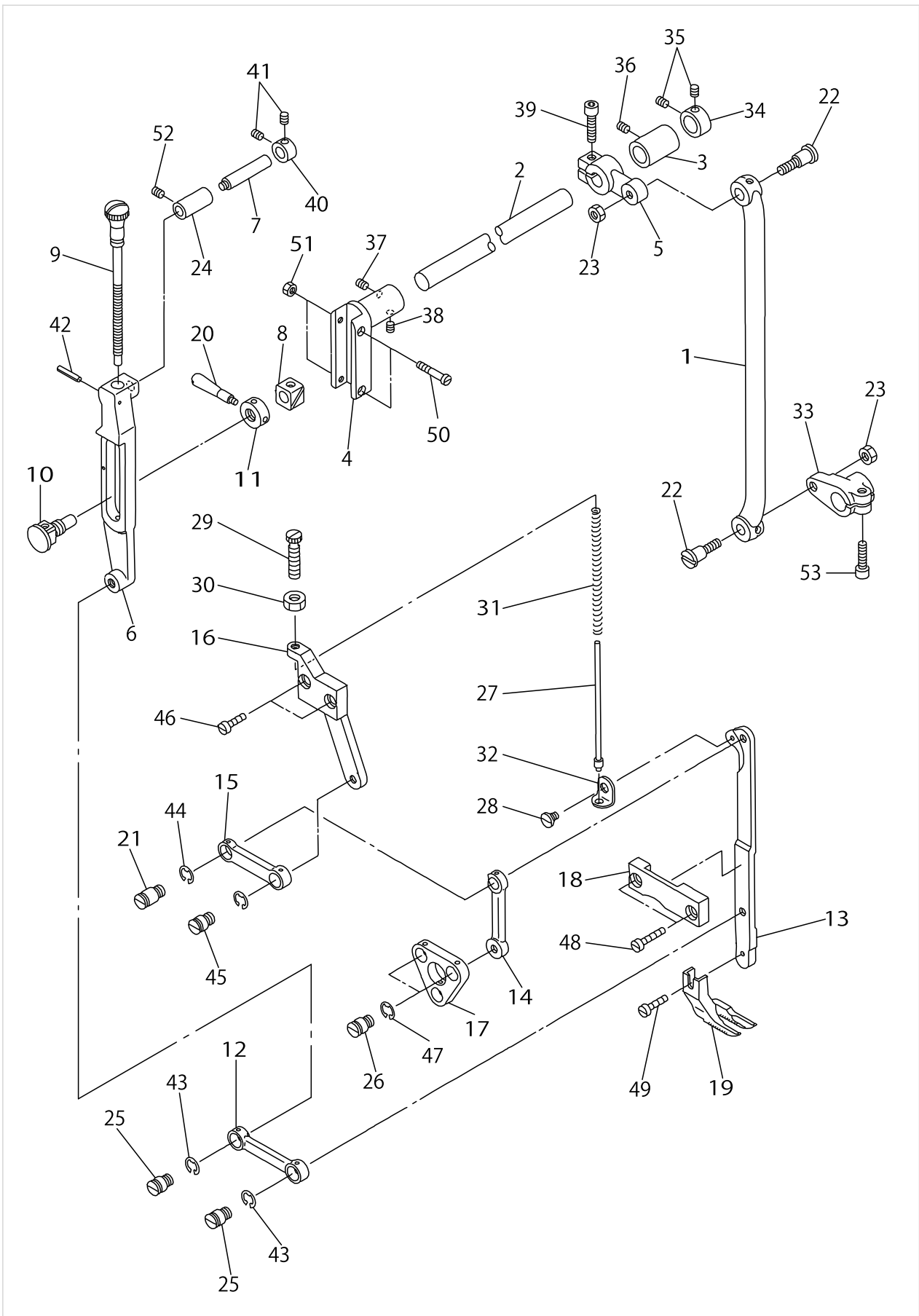
UPPER FEED MECHANISM COMPONENTS (1)



UPPER FEED MECHANISM COMPONENTS (1)

No.	Parts No.	Parts name	Remarks	Level	Cons	Qty
1	21049200	DRIVING CAM				1
2	21049309	CONNECTING ROD				1
3	21049408	DRIVING SHAFT ARM, FRONT				1
4	21049515	DRIVING SHAFT ARM, REAR				1
5	21049606	FEED ROCKER SHAFT				1
6	21049705	BUSHING, FRONT				1
7	21049804	BUSHING,REAR				1
8	21049903	ROD				1
9	21050000	HINGE SCREW				1
10	21050109	WASHER				1
11	NS6720440SP	NUT 11/32-28				1
12	21048707	HINGE SCREW				2
13	RE0800000K0	E-SHAPED SNAP RING (8MM)				2
14	SS8660610TP	SCREW 1/4-40 L=6				2
15	SM6061552TP	SCREW M6 L=15				1
16	SM6081802TP	SCREW				1
17	SS8150710SP	SCREW 15/64-28 L=7				2

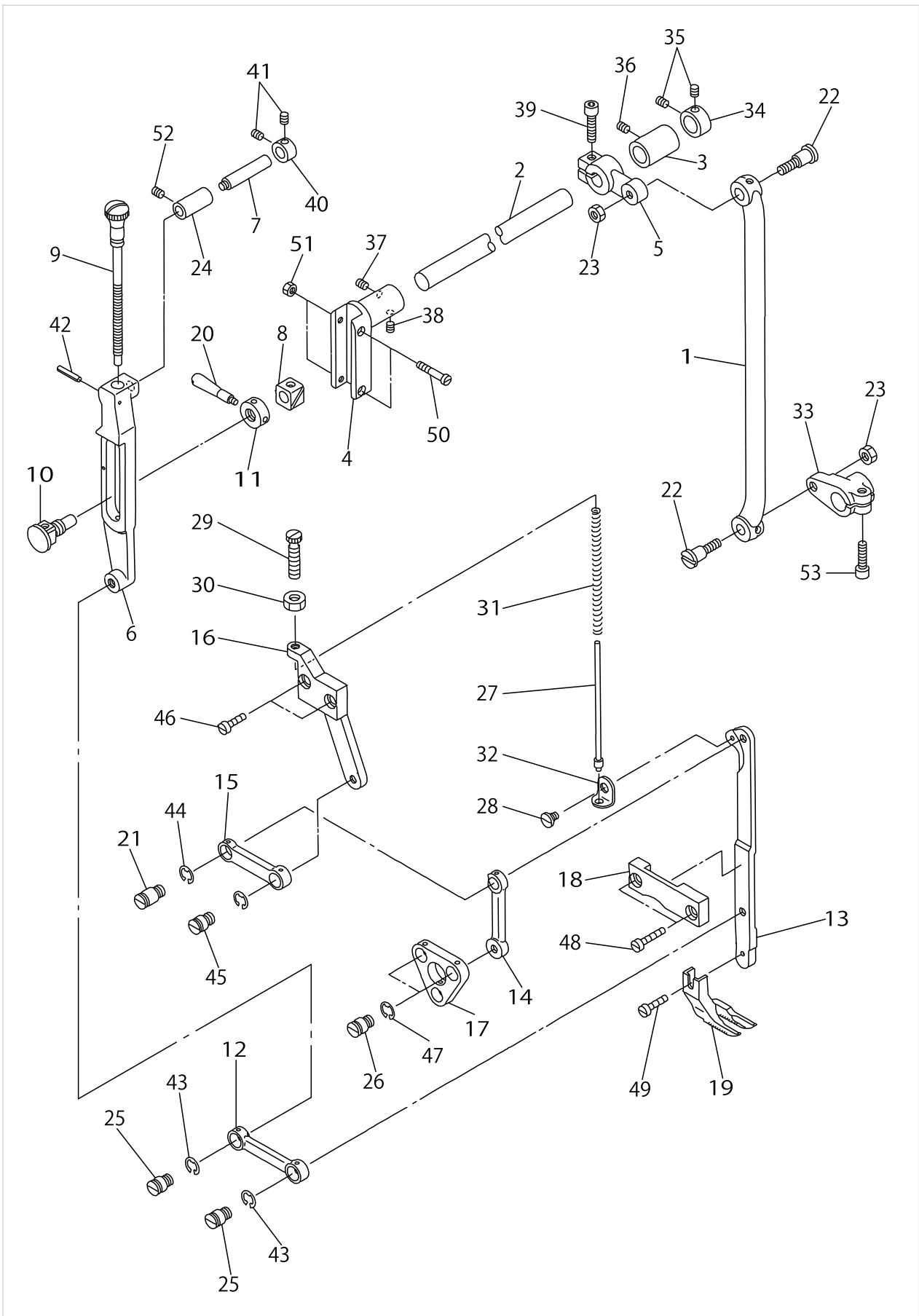
UPPER FEED MECHANISM COMPONENTS (2)



UPPER FEED MECHANISM COMPONENTS (2)

No.	Parts No.	Parts name	Remarks	Level	Cons	Qty
1	21040902	ROD				1
2	21047006	DRIVING SHAFT				1
3	21047105	BUSHING				1
4	21047204	DRIVING SHAFT ROD, FRONT				1
5	21041009	DRIVING SHAFT ROD, REAR				1
6	21047303	UPPER FEED CONTROL BRACKET				1
7	21047402	SHAFT				1
8	21047501	BROCK				1
9	21047600	SCREW				1
10	21047709	SHAFT				1
11	21047808	NUT				1
12	21047907	ROD				1
13	21048004	UPPER FEED ROD				1
14	21048103	UPPER FEED LINK A				1
15	21048202	UPPER FEED LINK B				1
16	21041108	UPPER FEED LINK BRACKET				1
17	21048301	BRACKET				1
18	21041207	SUPPORTING PLATE				1
19	21041306	WALKING FOOT (STANDARD)				1
20	21048400	CONTROL LEVER				1
21	21048509	HINGE SCREW				1
22	SD1201201TP	HINGE SCREW				2
23	NS6680410SP	NUT 9/32-28				2
24	21046701	NEEDLE BAR BUSHING, LOWER				1
25	21048707	HINGE SCREW				2
26	21048707	HINGE SCREW				2
27	21048806	SPRING GUIDE BAR				1
28	21048905	HINGE SCREW				1
29	B3036141H00	ADJUSTING THUMB SCREW				1
30	NS6680320SP	NUT 9/32-28				1
31	21049002	SPRING				1
32	B3035141H00	RETAINING PLATE				1
33	21041405	ROD				1
34	CS1471012SH	THRUST COLLAR D=14.72 W=10				1
35	SS8660330SP	SCREW 1/4-40 L= 3.0				2
36	SS8150710SP	SCREW 15/64-28 L=7				1
37	SS8660942TP	SCREW 1/4-40 L= 8.5				1
38	SS8660612TP	SCREW 1/4-40 L=6				1
39	SM6061552TP	SCREW M6 L=15				1
40	CS0951019SH	THRUST COLLAR D=9.53 W=10				1
41	SS8150710SP	SCREW 15/64-28 L=7				2
42	PS0250142KP	SPRING PIN 2.5X14				1
43	RE0800000K0	E-SHAPED SNAP RING (8MM)				2
44	RE0800000K0	E-SHAPED SNAP RING (8MM)				1
45	21048707	HINGE SCREW				1
46	SS7151210SP	SCREW 15/64-28 L=12				2
47	RE0800000K0	E-SHAPED SNAP RING (8MM)				2

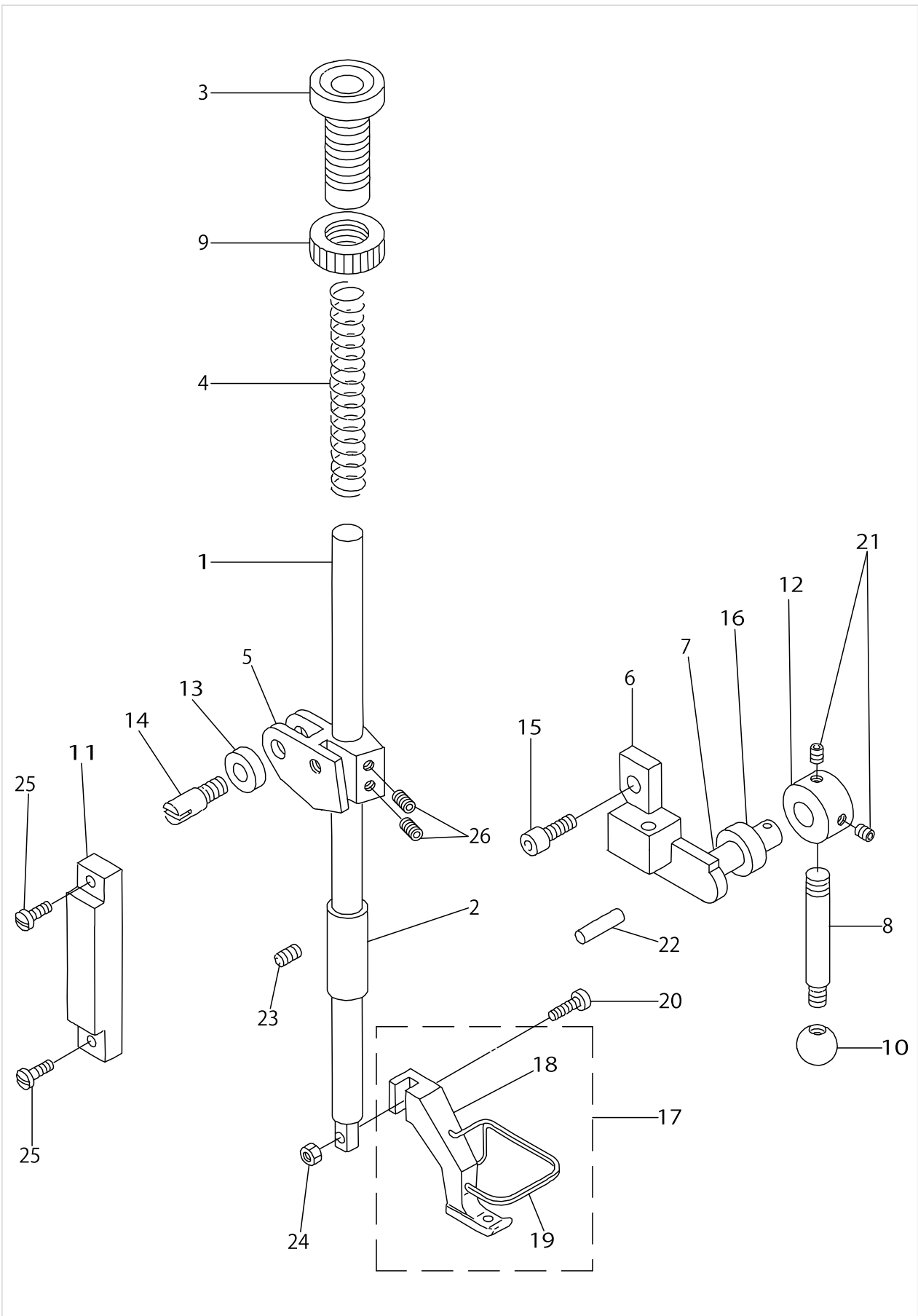
UPPER FEED MECHANISM COMPONENTS (2)



UPPER FEED MECHANISM COMPONENTS (2)

No.	Parts No.	Parts name	Remarks	Level	Cons	Qty
48	SS7151210SP	SCREW 15/64-28 L=12				2
49	SS6111010SP	SCREW 11/64-40 L= 9.5				1
50	SS7112420SP	SCREW 11/64-40 L=24				2
51	NS6110350SP	NUT 11/64-40				2
52	SS8150710SP	SCREW 15/64-28 L=7				1
53	SM6061552TP	SCREW M6 L=15				1

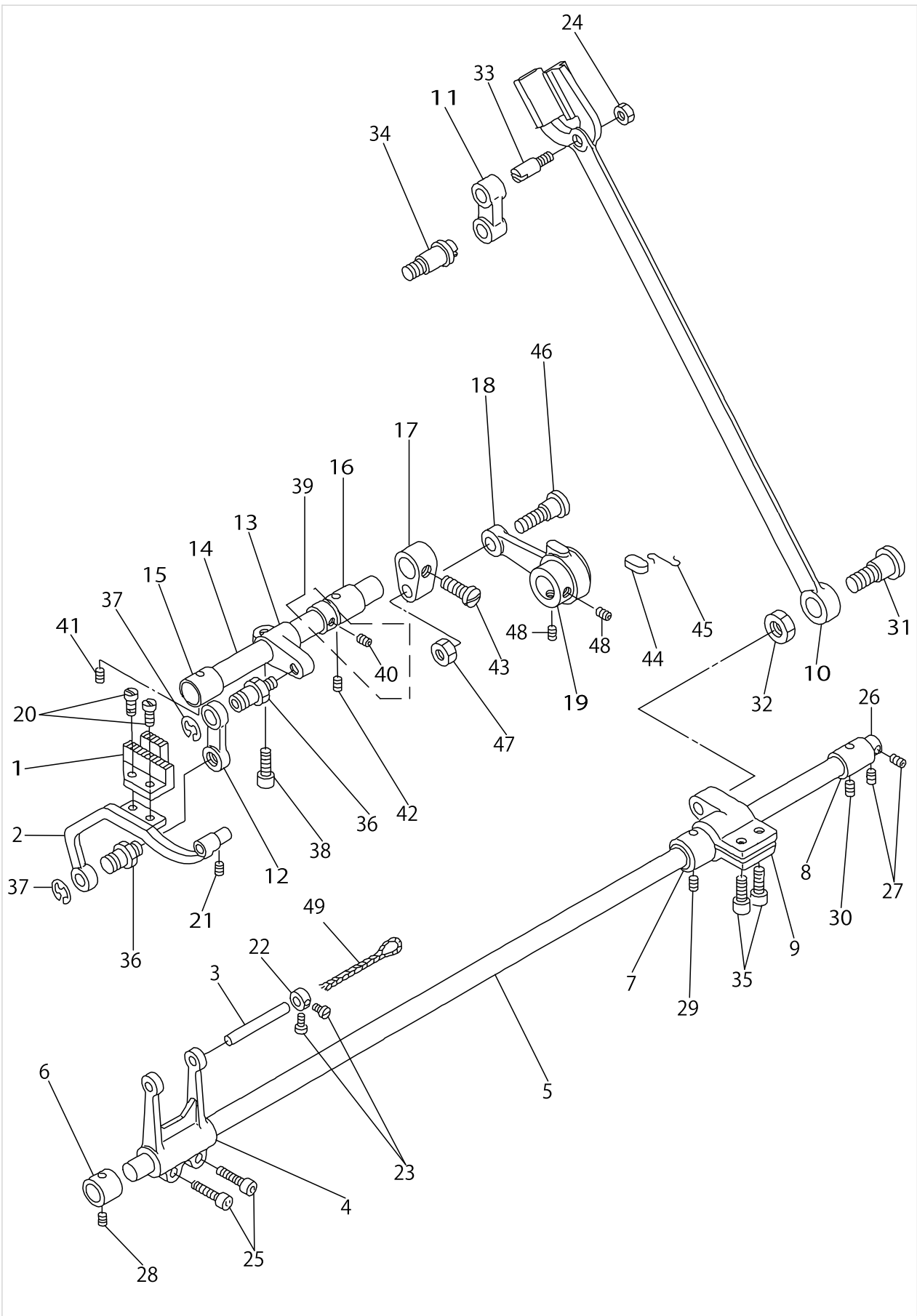
PRESSURE BAR COMPONENTS



PRESSURE BAR COMPONENTS

No.	Parts No.	Parts name	Remarks	Level	Cons	Qty
1	21050505	PRESSER BAR				1
2	21050604	PRESSER BAR BUSHING				1
3	21050703	SCREW				1
4	21050802	SPRING				1
5	21050901	PRESSER BAR GUIDE BRACKET				1
6	21051008	HAND LIFTER LINK				1
7	21051107	HAND LIFTER CAM				1
8	21051206	HAND LIFTER LEVER				1
9	21051305	NUT				1
10	21051404	GRIP				1
11	21051503	GUIDE PLATE				1
12	21051602	THRUST COLLAR				1
13	21051701	ROLLER FOLLOWER				1
14	21051800	GUIDE NUT				1
15	SS6660622TP	SCREW				1
16	B1662562000	COLLAR				1
17	21041553	PRESSER FOOT ASM,STD.				1
18	21041504	PRESSER FOOT STD.		*		1
19	21041603	GUARD		*		1
20	SS7091410SP	SCREW 9/64-40 L=13.5				1
21	SS8660512TP	SCREW 1/4-40 L=5				2
22	PS0300201KP	SPRING PIN 3.0X20				1
23	SS8660340SP	SCREW 1/4-40 L= 2.5				1
24	NS6090310SP	NUT 9/64-40				1
25	SS7621040SP	SCREW 3/16-32 L= 9.5				2
26	SS8660612TP	SCREW 1/4-40 L=6				2

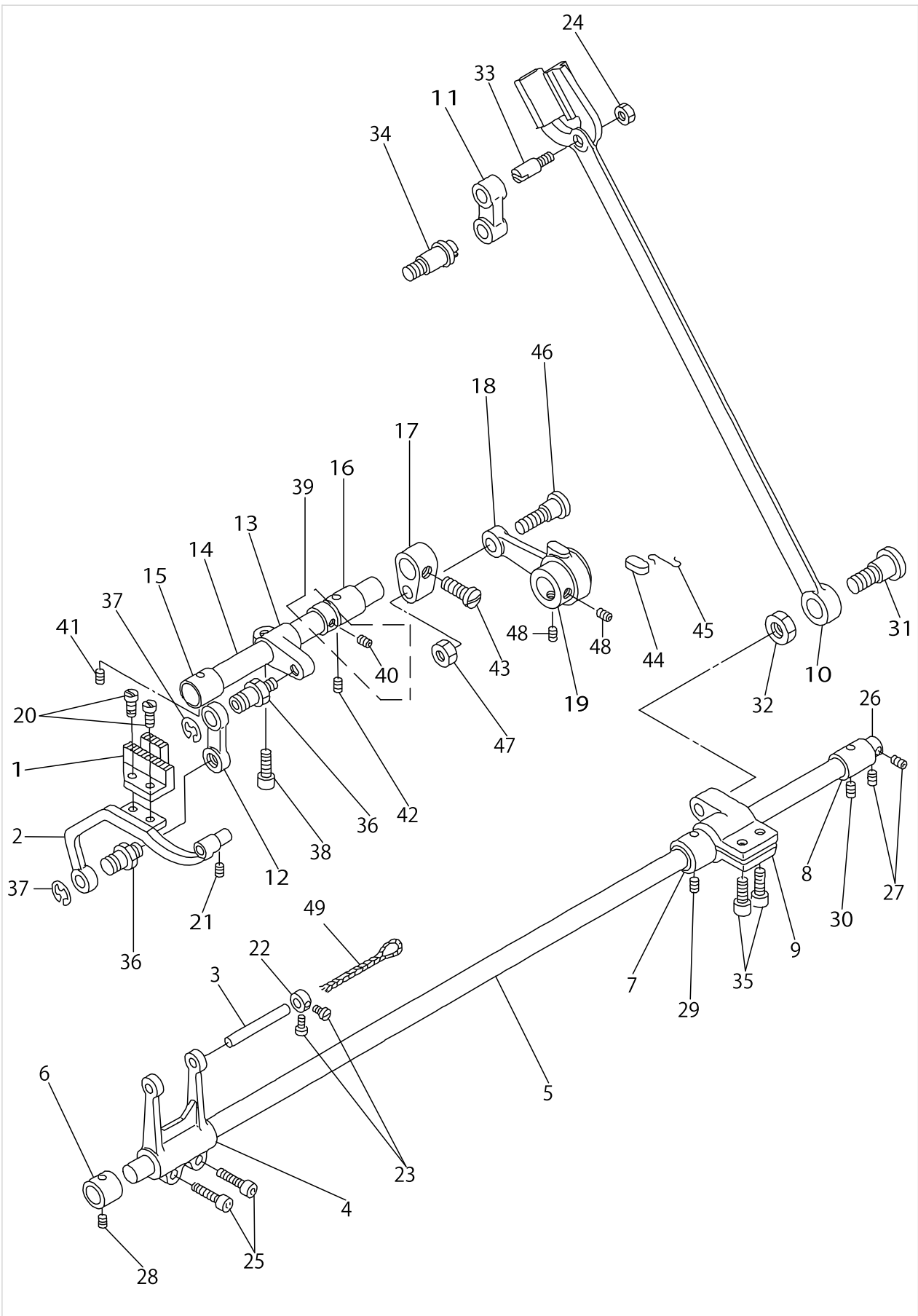
FEED MECHANISM COMPONENTS



FEED MECHANISM COMPONENTS

No.	Parts No.	Parts name	Remarks	Level	Cons	Qty
1	21041702	FEED DOG				1
2	21052006	FEED BAR				1
3	21052105	FEED BAR SHAFT				1
4	21052204	FEED BAR ARM.				1
5	21052303	FEED ROCKER SHAFT				1
6	21052402	FEED ROCKER SHAFT BUSHINGFRONT				1
7	21052501	FEED ROCKER SHAFT BUSHINGCETER				1
8	21052600	FEED ROCKER SHAFT BUSHING,REAR				1
9	21052709	FEED ROCKER SHAFT ARM,REAR				1
10	21052808	ROD				1
11	B1619241H00	FEED CONNECTING LINK				1
12	21053004	FEED BAR LINK				1
13	21053103	DRIVING SHAFT ARM,FRONT				1
14	21053202	DRIVING SHAFT				1
15	21052600	FEED ROCKER SHAFT BUSHING,REAR				1
16	21052501	FEED ROCKER SHAFT BUSHINGCETER				1
17	21053509	DRIVING SHAFT ARM,REAR				1
18	21053608	CAM ROD				1
19	21053707	FEED DRIVING CAM				1
20	SS4080620TP	SCREW 1/8-44 L=6				2
21	SS8620610TP	SCREW 3/16-32 L=6				1
22	CS0790721TH	THRUST COLLAR D=7.94 W=7				1
23	SS7090620TP	SCREW 9/64-40 L=6.1				2
24	NS6680410SP	NUT 9/32-28				1
25	SM6061552TP	SCREW M6 L=15				2
26	CS1471012SH	THRUST COLLAR D=14.72 W=10				1
27	SS8660610TP	SCREW 1/4-40 L=6				2
28	SS8151150SP	SCREW 15/64-28 L=10.5				1
29	SS8150710SP	SCREW 15/64-28 L=7				1
30	SS8151150SP	SCREW 15/64-28 L=10.5				1
31	SD1201201TP	HINGE SCREW				1
32	NS6680410SP	NUT 9/32-28				1
33	B1617241H00	HINGE SCREW, A				1
34	B1618241H00	HINGE SCREW, B				1
35	SM6061552TP	SCREW M6 L=15				2
36	B1424158000	HINGE SCREW				2
37	RE0700000K0	E-RING 7				2
38	SM6061552TP	SCREW M6 L=15				1
39	22904155	MAIN SHAFT THRUST COLLAR ASM.				1
40	SS8660610TP	SCREW 1/4-40 L=6		*		2
41	SS8151150SP	SCREW 15/64-28 L=10.5				1
42	SS8150710SP	SCREW 15/64-28 L=7				1
43	SS6151920SP	SCREW 15/64-28 L=19.0				1
44	B1702012000	OIL FELT				1
45	B1213012000	FELT RETAINER				1
46	SD1000951SP	HINGE SCREW D=10 H=9.5				1
47	NS6680410SP	NUT 9/32-28				1

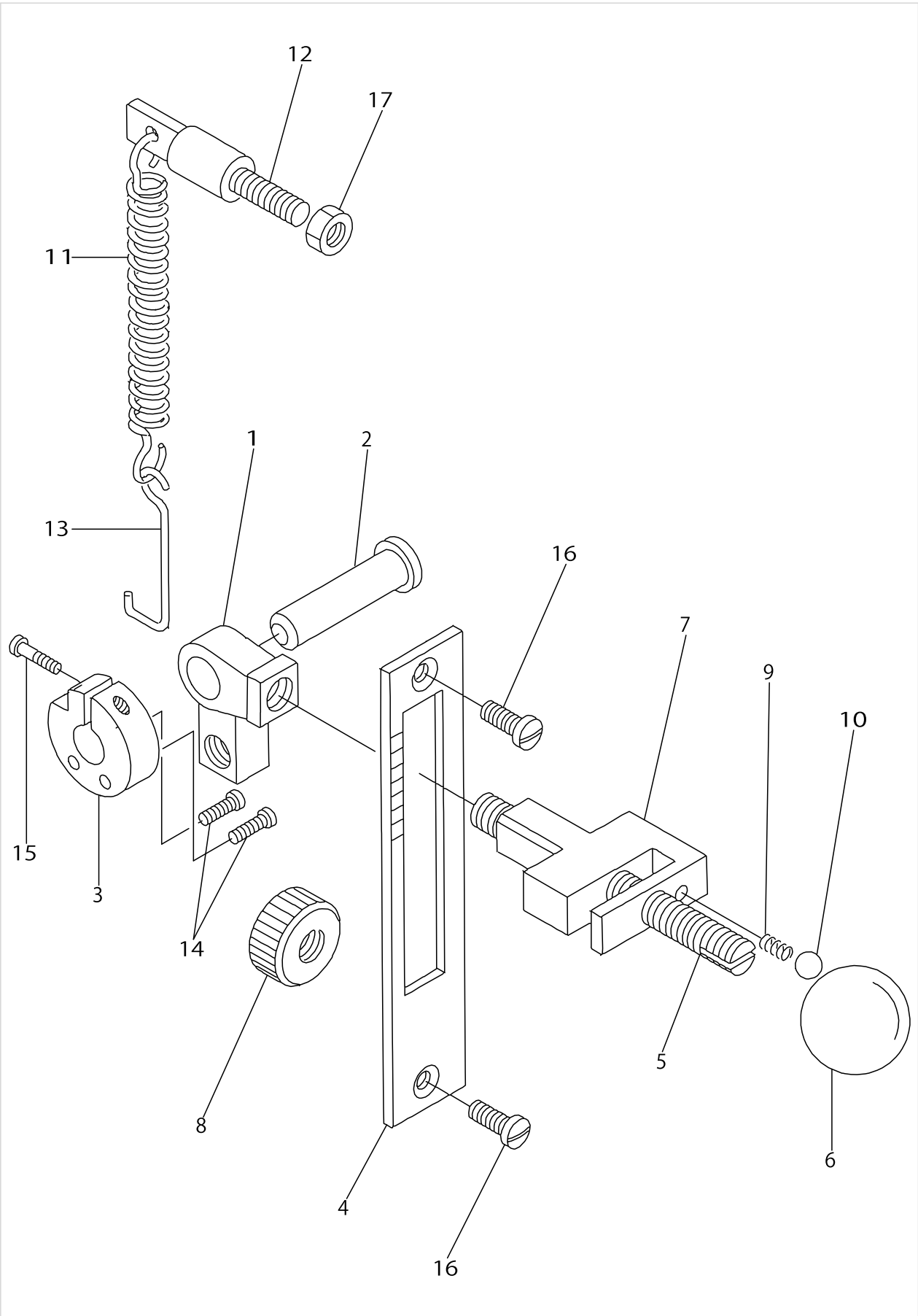
FEED MECHANISM COMPONENTS



FEED MECHANISM COMPONENTS

No.	Parts No.	Parts name	Remarks	Level	Cons	Qty
48	SS8660512TP	SCREW 1/4-40 L=5				2
49	CQ202000000	OIL WICK				0.1

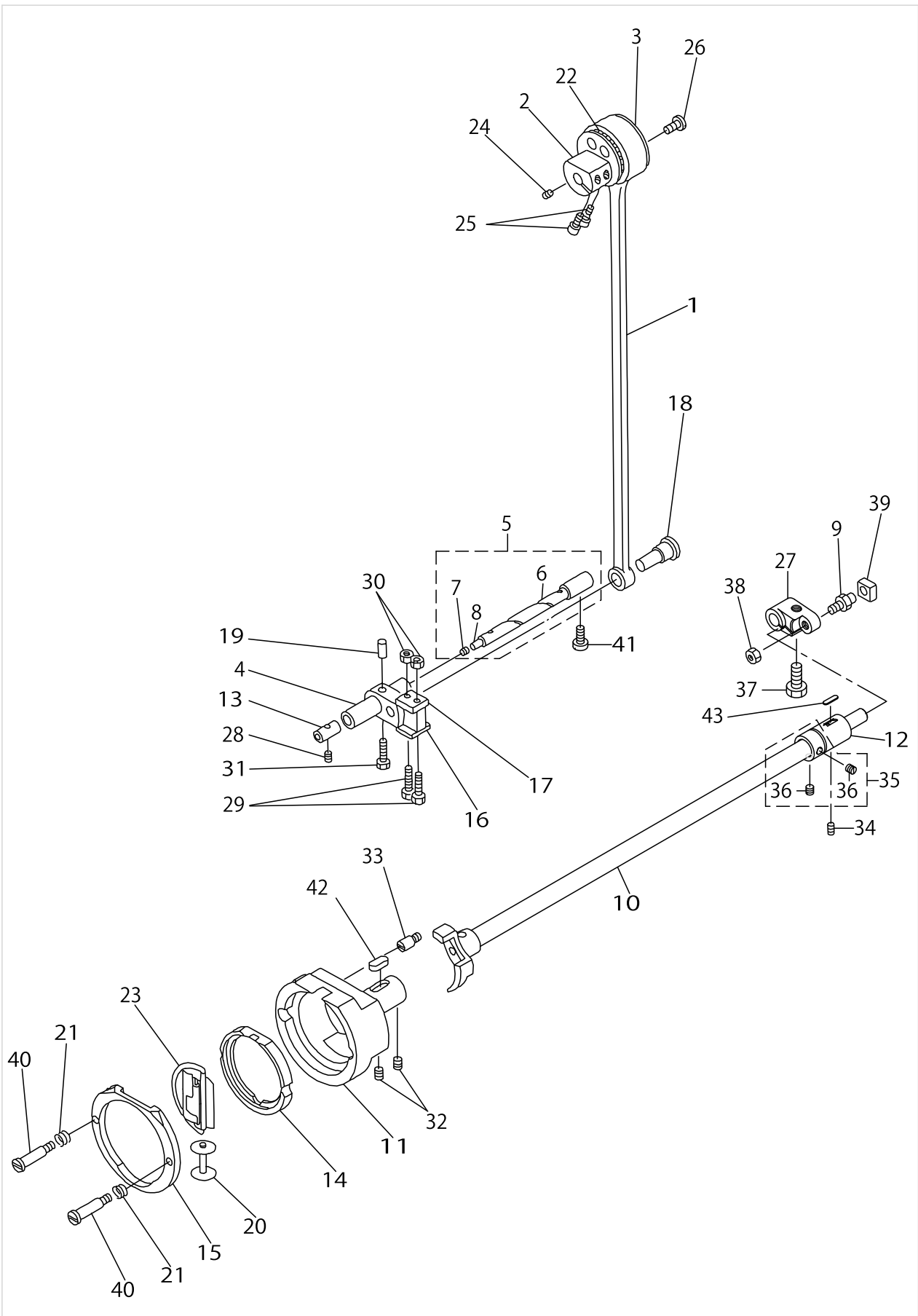
FEED REGULATOR MECHANISM COMPONENTS



FEED REGULATOR MECHANISM COMPONENTS

No.	Parts No.	Parts name	Remarks	Level	Cons	Qty
1	21054002	FEED REGULATOR				1
2	21054101	FEED REGULATOR SHAFT				1
3	21054200	STOPPER				1
4	21054309	SIDE COVER				1
5	21054408	LEVER SHAFT				1
6	21054507	LEVER GRIP				1
7	21054606	LEVER				1
8	21054705	NUT				1
9	21054804	SPRING				1
10	21054903	BALL				1
11	21055009	SPRING				1
12	21055108	SPRING SUSPENTION SHAFT				1
13	21055207	SPRING SUSPENTION				1
14	SS6121610TP	SCREW 3/16-28 L=15.5				2
15	SS6621840SP	SCREW 3/16-32 L=18.0				1
16	SS7150740SP	SCREW 15/64-28 L=7				2
17	NS6680320SP	NUT 9/32-28				1

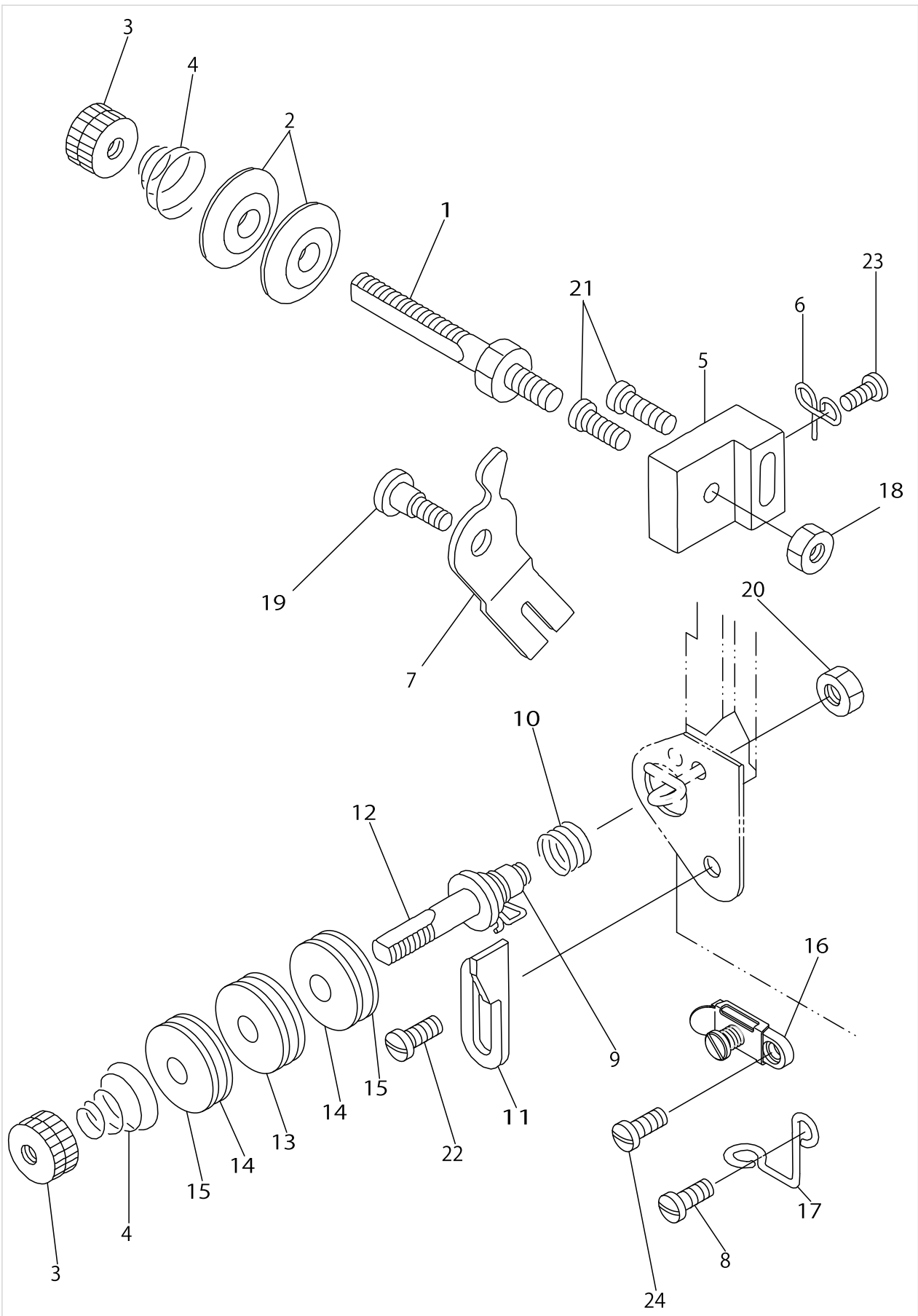
HOOK DRIVING SHAFT COMPONENTS



HOOK DRIVING SHAFT COMPONENTS

No.	Parts No.	Parts name	Remarks	Level	Cons	Qty
1	21055504	CONNECTING ROD				1
2	21055603	CON-ROD ECCENTRIC CAM				1
3	21055702	CAM SLIDE PLATE				1
4	21055801	OSCILATING ROCK SHAFT				1
5	21055959	OSCILATING ROCK SHAFT ASM.				1
6	21055900	HINGE PIN		*		1
7	TA0290301M0	RUBBER PLUG		*		1
8	CQ303000000	OIL WICK		*		0.04
9	21056312	ROLLER STUD				1
10	40178619	HOOK_DRIVING_SHAFT_ASM				1
11	21056502	DRIVING SHAFT BUSHING,FRONT				1
12	21056601	DRIVING SHAFT BUSHING,REAR				1
13	21056007	ROCK SHAFT BUSHING,FRONT				1
14	21056809	SHUTTLE RACE BODY				1
15	21056908	HOOK COVER				1
16	21057005	SLIDE PLATE A				1
17	21057104	SLIDE PLATE B				1
18	21057203	CON-ROD PIN				1
19	21057302	CON-ROD PIN WEDGE				1
20	21057401	BOBBIN				1
21	21057500	HOOK COUNTER SPRING				2
22	21057609	CAGE & ROLLER				1
23	21041850	HOOK ASM.				1
24	SS8151550SP	SCREW 15/64-28 L=15				1
25	SM6081802TP	SCREW				2
26	SS7110830SP	SCREW 11/64-40 L= 7.5				2
27	21154216	OSCILLATOR				1
28	SS8151150SP	SCREW 15/64-28 L=10.5				1
29	21057708	SCREW				2
30	NS6110420SP	NUT 11/64-40				2
31	SS7621510SP	SCREW				1
32	SS8151550SP	SCREW 15/64-28 L=15				2
33	21057807	SCREW				1
34	SS8150710SP	SCREW 15/64-28 L=7				1
35	22904155	MAIN SHAFT THRUST COLLAR ASM.				1
36	SS8660610TP	SCREW 1/4-40 L=6		*		2
37	SM9082003SC	SCREW M8 L=20				1
38	NS6680320SP	NUT 9/32-28				1
39	21056205	CRANK SLIDE BLOCK				1
40	21057906	SCREW				2
41	SS6151440SP	SCREW 15/64-28 L=14				1
42	B1702012000	OIL FELT				1
43	B1806038000	OIL FELT				1

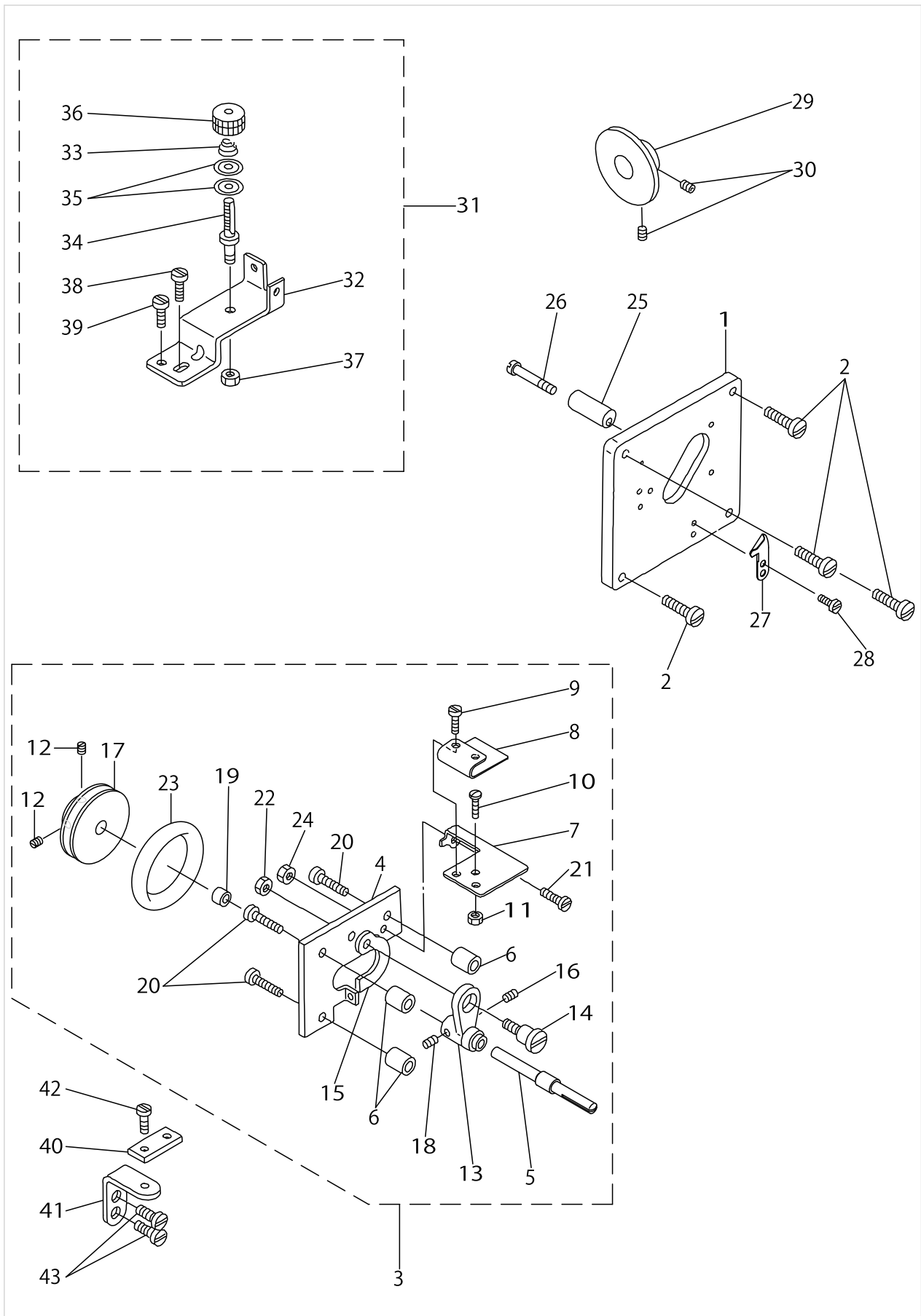
THREAD TENSION COMPONENTS



THREAD TENSION COMPONENTS

No.	Parts No.	Parts name	Remarks	Level	Cons	Qty
1	21059001	THREAD TENSION POST				1
2	B3126012000	THREAD TENSION DISK				2
3	B3125012000	THREAD TENSION NUT				2
4	21059100	THREAD TENSION SPRING				2
5	21059209	THREAD TENSION POST BRACKET				1
6	21059308	THREAD TENSION GUIDE				1
7	21059407	THREAD RELEASING PLATE				1
8	SS7090710SP	SCREW 9/64-40 L= 6.8				1
9	21059605	SPRING A				1
10	21059704	THREAD TAKE-UP SPRING GUIDE				1
11	21059803	SPRING SUPPORT PLATE				1
12	21059902	THREAD TENSION WHEEL POST				1
13	21060009	THREAD TENSION WHEEL				1
14	21060108	WHEEL FELT				2
15	21060207	FELT SUPPORT PLATE				2
16	21161153	ARM THREAD GUIDE ASM., LOWER				1
17	B1131562000	FRAME THREAD GUIDE, LOWER				1
18	NS6680320SP	NUT 9/32-28				1
19	SD0600321SP	HINGE SCREW D=6 H=3.2				1
20	NS6150310SP	NUT 15/64-28				1
21	SS7111120SP	SCREW 11/64-40 L=10.5				2
22	SS7090610SP	SCREW 9/64-40 L=6				1
23	SS7090710SP	SCREW 9/64-40 L= 6.8				1
24	SS1090410SL	SCREW 9/64-40 L=4				1

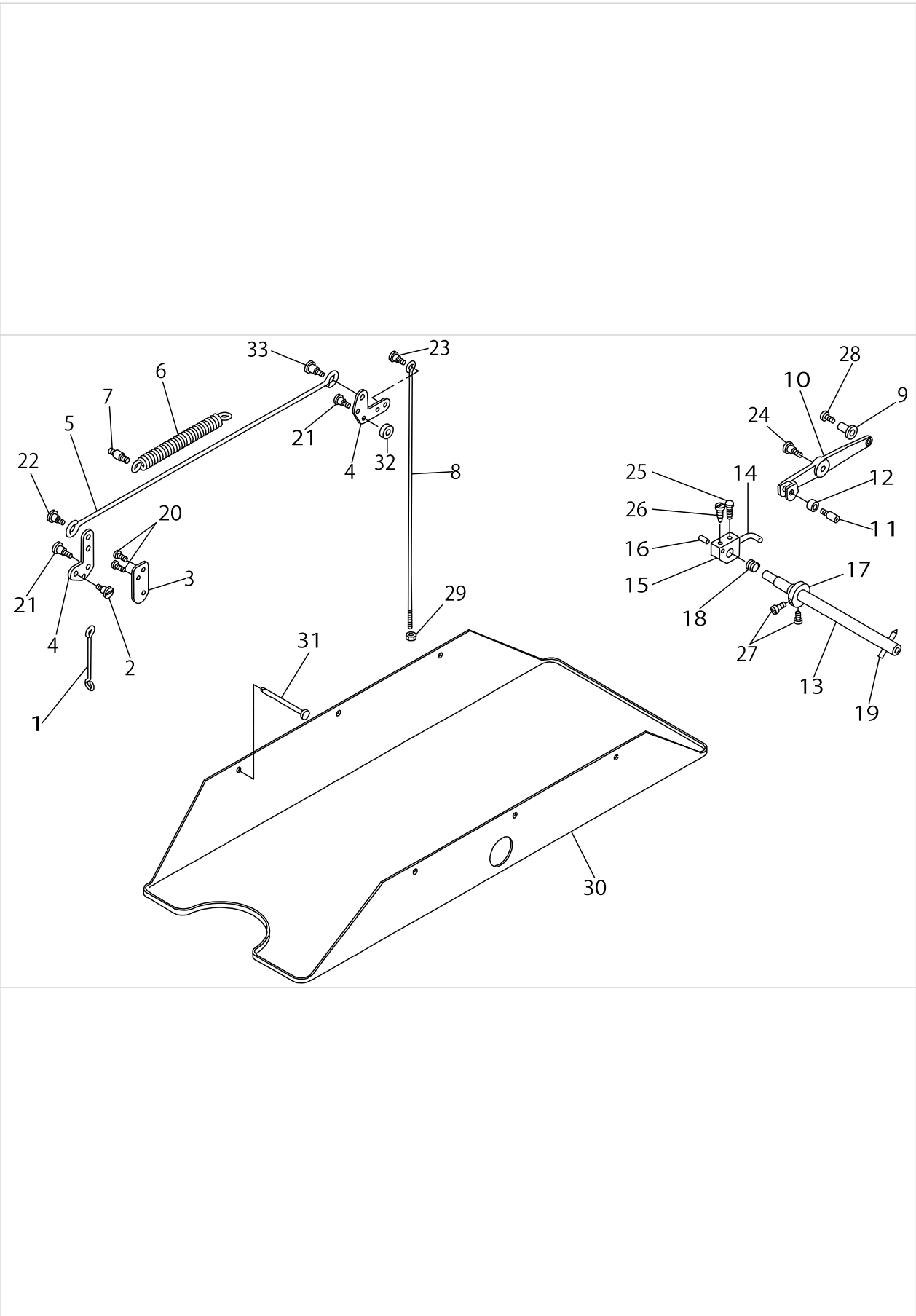
THREAD WINDER & THREAD GUIDE COMPONENTS



THREAD WINDER & THREAD GUIDE COMPONENTS

No.	Parts No.	Parts name	Remarks	Level	Cons	Qty
1	21067905	THREAD WINDOW PLATE				1
2	SS7111120SP	SCREW 11/64-40 L=10.5				4
3	21061056	THREAD WINDER ASM.				1
4	B3201158000	THREAD WINDER BASE		*		1
5	21061015	BOBBIN WINDER SPINDLE		*		1
6	B3203158000	WASHER		*		3
7	21061106	BOBBIN PRESSER		*		1
8	21061205	BOBBIN PRESSURE SPRING		*		1
9	SS5060410SP	SCREW 3/32-56 L=3.5		*		2
10	SS7081310SP	SCREW 1/8-44 L=12.5		*		1
11	NS6080210SP	NUT 1/8-44		*		1
12	SS8110510SP	SCREW 11/64-40 L=5		*		2
13	B3204232000	BOBBIN WINDER FRAME		*		1
14	B3205232000	HINGE SCREW,		*		1
15	B3206232000	BOBBIN WINDER TENSION BRACKET		*		1
16	21061304	SPRING		*		1
17	B3211210000	BOBBIN WINDER WHEEL		*		1
18	A3222958000	BOBBIN WINDER SPRING, LONG		*		1
19	B3207158000A	THREAD WIDING SHAFT COLLAR		*		1
20	SS7111810SP	SCREW 11/64-40 L=18		*		3
21	SD0720193SP	HINGE SCREW D= 7.24 H= 1.9		*		1
22	NS6110310SP	NUT 11/64-40		*		1
23	B3212210000	FRICTION WHEEL		*		1
24	NS6110310SP	NUT 11/64-40		*		1
25	21061403	STOPPER				1
26	SS7112810SP	SCREW 11/64-40 L=28				1
27	10502300	THREAD CUTTER				1
28	SS6080410SP	SCREW 1/8-44 L=4				2
29	21061601	FRICTION WHEEL				1
30	SS8150710SP	SCREW 15/64-28 L=7				2
31	21061759	THREAD WINDER GUIDE BASE ASM.				1
32	21061700	THREAD WINDER GUIDE BASE		*		1
33	B3129012B00	THREAD TENSION SPRING		*		1
34	21059001	THREAD TENSION POST		*		1
35	B3126012000	THREAD TENSION DISK		*		2
36	B3125012000	THREAD TENSION NUT		*		1
37	NS6680320SP	NUT 9/32-28		*		1
38	SS7110910SP	SCREW 11/64-40 L=8.5				1
39	SS4080610SP	SCREW 1/8-44 L=6.4				1
40	B2510158000	THREAD WINDER THREAD GUIDE				1
41	21061908	GUIDE BRACKET				1
42	SS7090710SP	SCREW 9/64-40 L= 6.8				1
43	SS7151120SP	SCREW 15/64-28 L=11				2

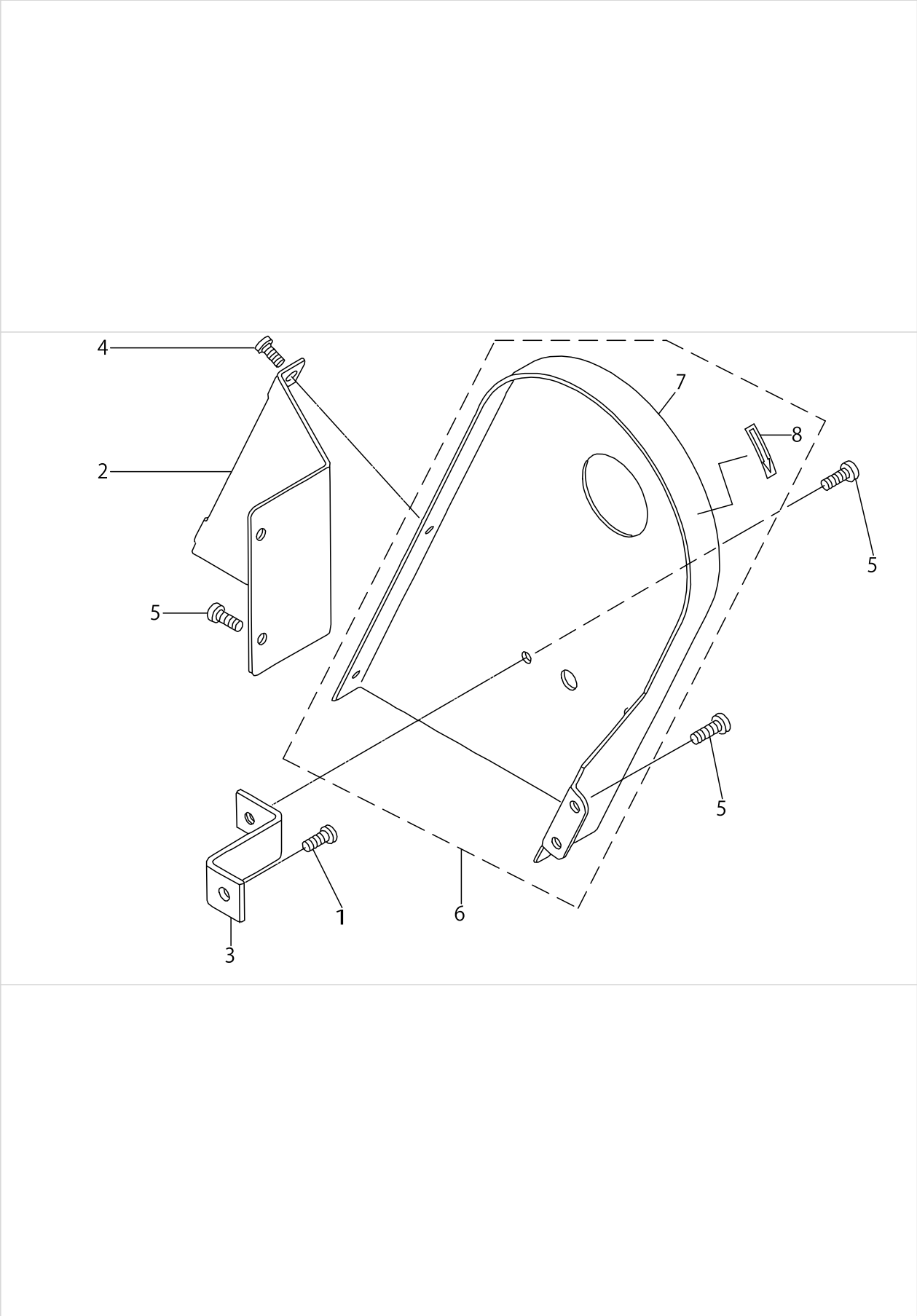
KNEE LIFTER & OIL PAN COMPONENTS



KNEE LIFTER & OIL PAN COMPONENTS

No.	Parts No.	Parts name	Remarks	Level	Cons	Qty
1	21062500	PRESSER BAR LIFTING BAR				1
2	21062609	HINGE SCREW				1
3	21062708	LINK BASE				1
4	21062807	PRESSER BAR LIFTING LINK				2
5	21062906	KNEE LIFTER SIDE CONNECTINGBAR				1
6	B1513280000	TENSION SPRING				1
7	B3413227000	SPRING SUSPENSION				1
8	21063003	CONNECTING BAR				1
9	21063102	CONNECTING BAR JOINT				1
10	21063201	KNEE LIFTER LEVER				1
11	21063300	ROLLER STUD				1
12	21063409	ROLLER				1
13	21063508	KNEE PRESS SIDE SHAFT				1
14	21063607	KNEE LIFTER BAR				1
15	21063706	KNEE LIFTER BAR BROCK				1
16	21063904	PIN				1
17	21063805	SPRING PRESSER REGULATORYCOLLA				1
18	B3429521000	KNEE PRESS SPRING				1
19	B3432521000	PIN				1
20	SS7150740SP	SCREW 15/64-28 L=7				2
21	SD0790431SP	HINGE SCREW D= 7.94 H= 4.3				2
22	SD0790431SP	HINGE SCREW D= 7.94 H= 4.3				1
23	SD1000701TP	HINGE SCREW D=10 H=7				1
24	SD1111351SP	HINGE SCREW D=11.11 H=13.5				1
25	SS9681610TP	SCREW 9/32-28 L=16				1
26	SS7681650TP	SCREW 9/32-28 L=16				1
27	SS7110910TP	SCREW 11/64-40 L= 8.5				2
28	SS7620750SP	SCREW 3/16-32 L= 6.5				1
29	NS6620310SP	NUT 3/16-32				1
30	21064001	OIL PAN				1
31	10539906	SET NAIL				6
32	18125609	LINK COLLAR				1
33	SD0790432SP	HINGE SCREW D= 7.94 H= 4.3				1

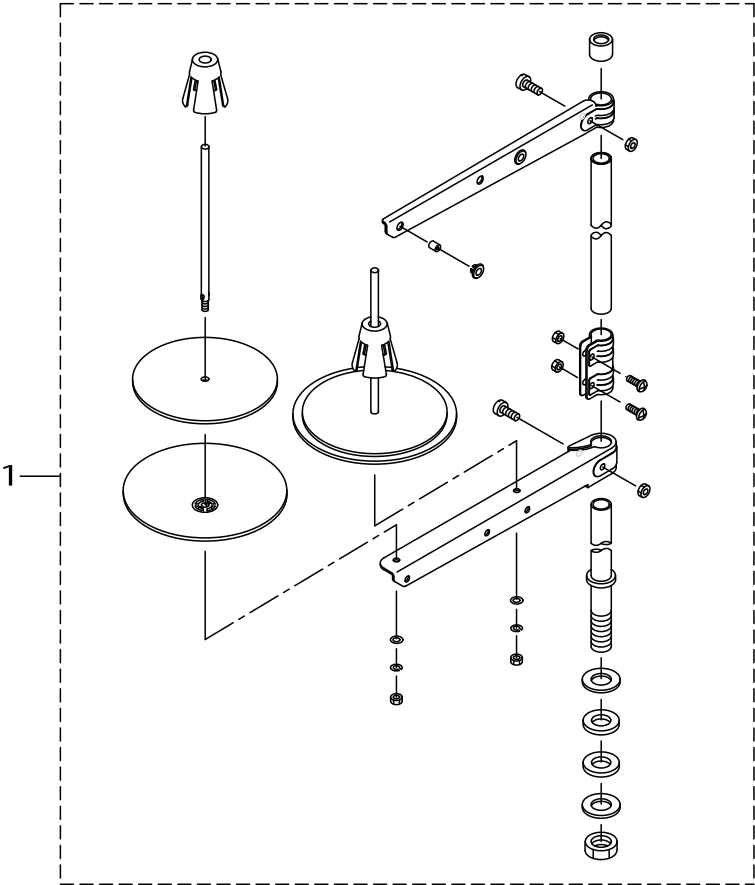
BELT COVER COMPONENTS



BELT COVER COMPONENTS

No.	Parts No.	Parts name	Remarks	Level	Cons	Qty
1	SS7151410TP	SCREW 15/64-28 L=14				1
2	21068101	BELT COVER B				1
3	21064308	BELT COVER BRACET				1
4	SS6110480SP	SCREW 11/64-40 L=4.3				2
5	SS7150740SP	SCREW 15/64-28 L=7				5
6	21068051	BELT COVER A				1
7	21068002	BELT COVER A		*		1
8	CM500300001	DIRECTION LABEL		*		1

THREAD STAND COMPONENTS



THREAD STAND COMPONENTS

No.	Parts No.	Parts name	Remarks	Level	Cons	Qty
1	40096354	THREAD STAND ASM.				1

TABLE COMPONENTS

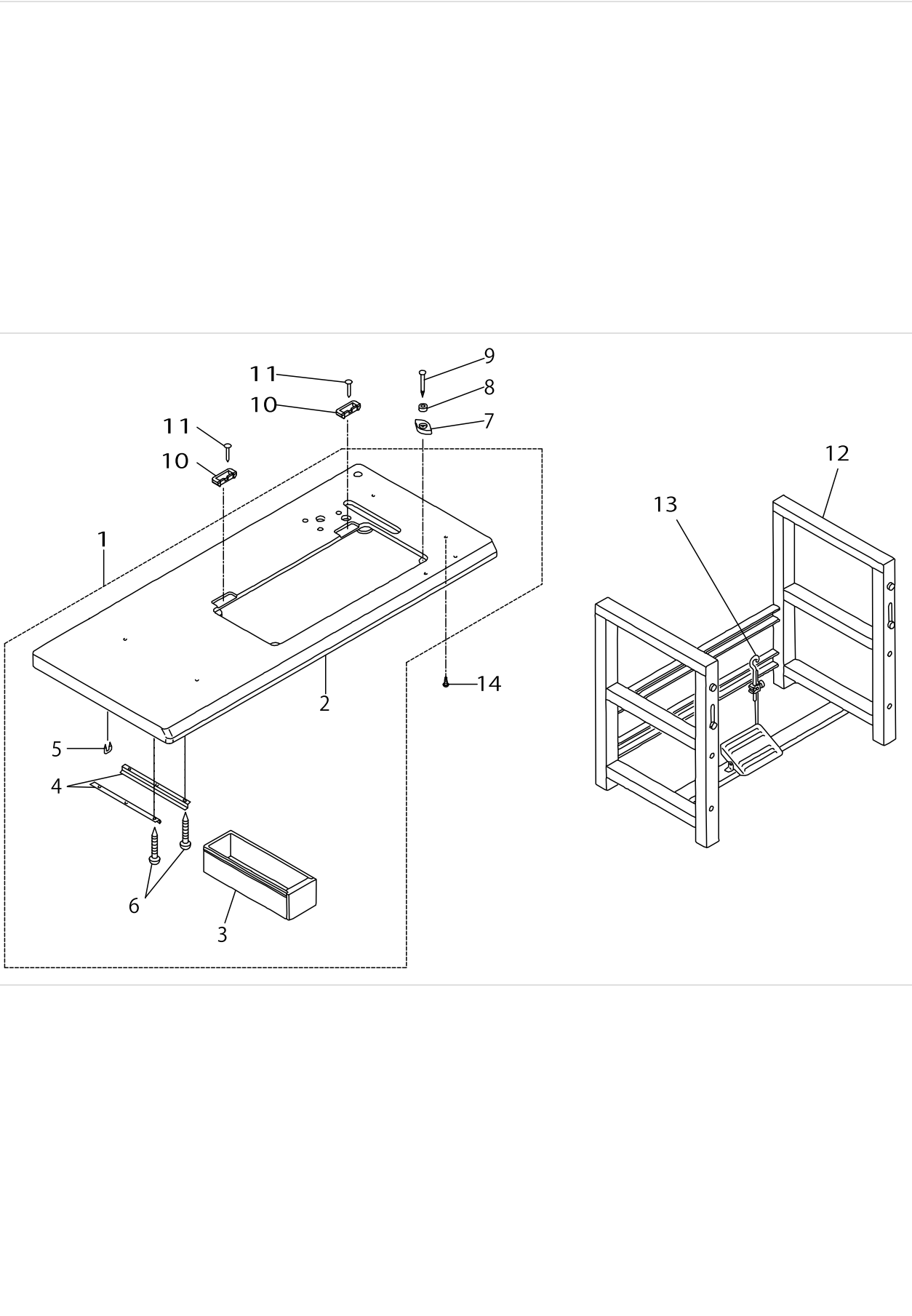
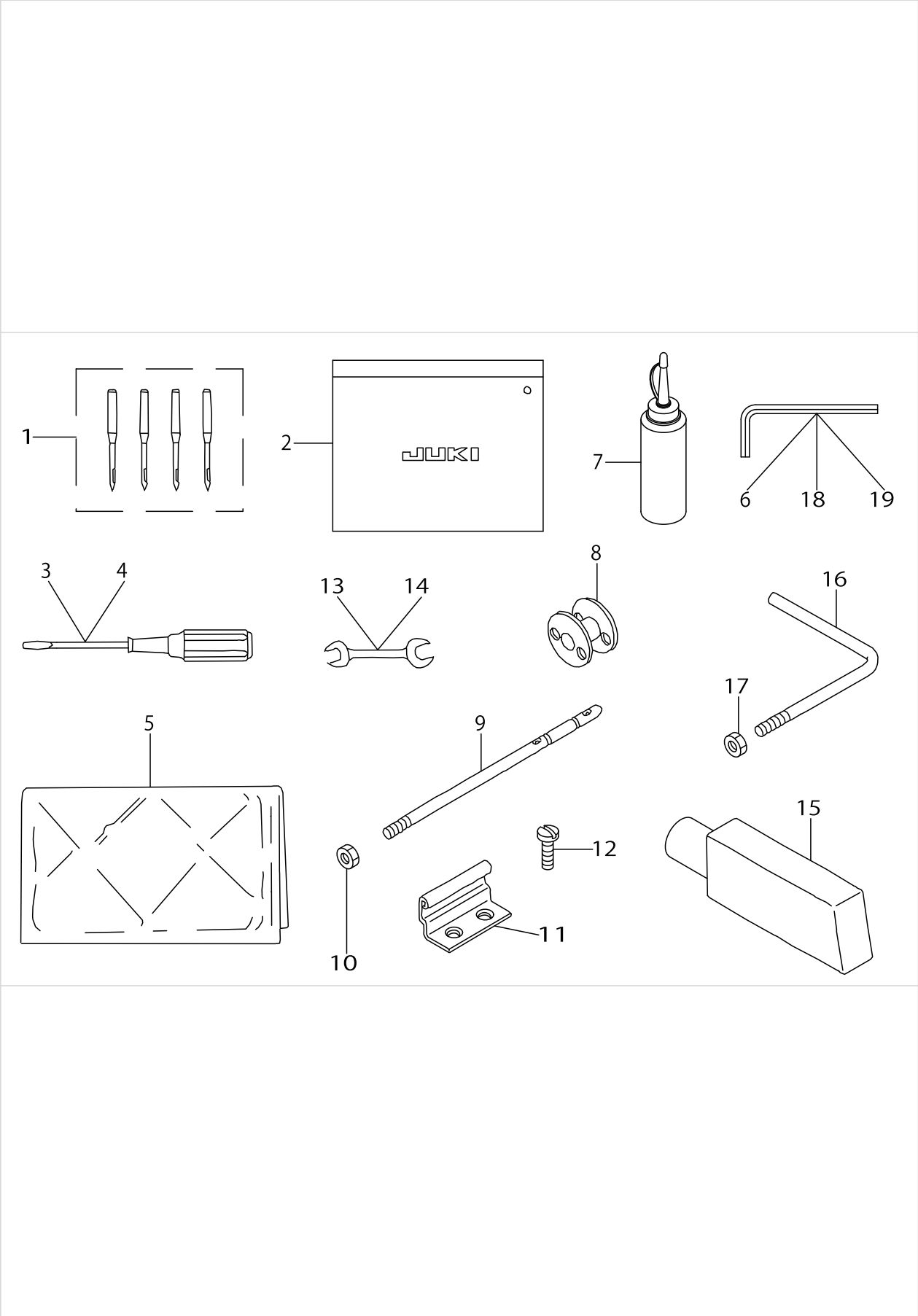


TABLE COMPONENTS

No.	Parts No.	Parts name	Remarks	Level	Cons	Qty
1	21043153	TABLE ASM.				1
2	21043104	TABLE		*		1
3	11849502	DRAWER		*		1
4	B8204012000	DRAWER SUPPORT		*		2
5	D8204555D00	DRAWER STOPPER		*		1
6	SK3311600SE	WOOD SCREW D=3.1 L=16		*		6
7	B8209012000	RUBBER CUSHION				4
8	B8206012000	FELT CUSHION				4
9	10539906	SET NAIL				4
10	11075801	RUBBER SPACER				2
11	10539906	SET NAIL				4
12	21065156	LEG ASM.				1
13	B71140120A0	MOTOR CONNECTING ROD ASM.				1
14	SK3513200SC	WOOD SCREW D=5.1 L=32				4

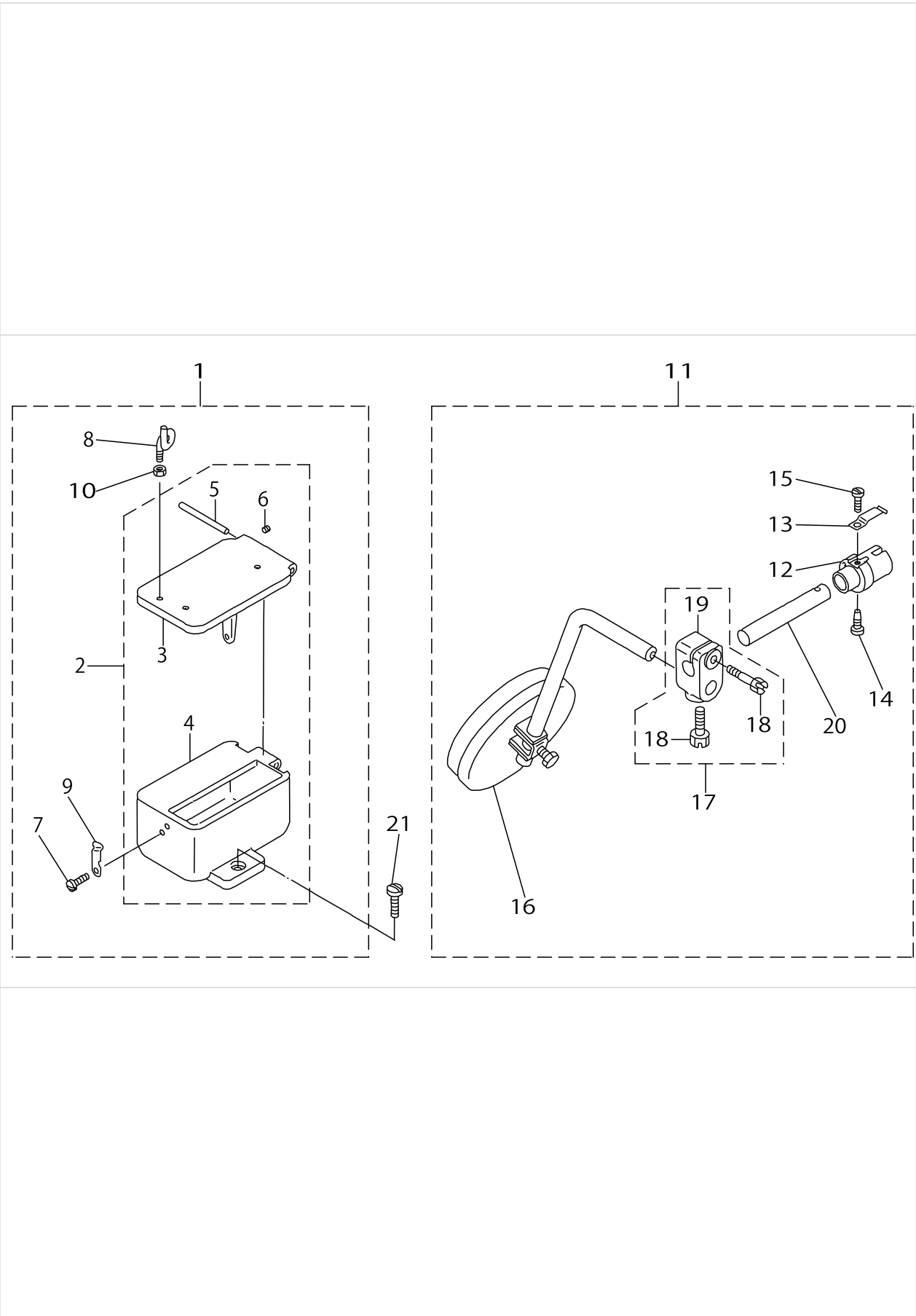
ACCESSORIES PARTS COMPONENTS (1)



ACCESSORIES PARTS COMPONENTS (1)

No.	Parts No.	Parts name	Remarks	Level	Cons	Qty
1	MC532002304	NEEDLE (794 NM=230-4)				1
2	22932800	ACCESSORIE BAG				1
3	22933006	SCREW DRIVER,LARGE				1
4	12347308	SCREW DRIVER (SMALL)				1
5	26234005	VINYL COVER				1
6	J106600000G	HEXAGONAL WRENCH KEY				1
7	B91212200A0	OILER (CONTAINING NO.2 OIL)				1
8	21057401	BOBBIN				3
9	40052262	THREAD GUIDE PIN				1
10	NS6620310SP	NUT 3/16-32				1
11	B8213512000	HINGE				2
12	SS1681140SP	SCREW 9/32-28 L=11				4
13	26034702	WRENCH				1
14	B9113012000	WRENCH (9X10)				1
15	21064506	SUPPORTING BLOCK				1
16	21064605	SUPPORTING ARM	OPTION			1
17	NS6150430SP	NUT 15/64-28	OPTION			1
18	B9141372000	HEXAGONAL WRENCH, LARGE				1
19	J106600000F	HEXAGONAL WRENCH KEY				1

ACCESSORIES PARTS COMPONENTS (2)



ACCESSORIES PARTS COMPONENTS (2)

No.	Parts No.	Parts name	Remarks	Level	Cons	Qty
1	21068556	OIL POT ASM.				1
2	21068564	OIL POT ASM.		*		1
3	21064704	OIL POT COVER		*		1
4	21064803	OIL POT		*		1
5	PH0400402C0	PARALLEL PIN		*		1
6	SS8090410SP	SCREW 9/64-40 L= 3.5		*		1
7	SS7090710SP	SCREW 9/64-40 L= 6.8		*		1
8	B3114761000	FRAME THREAD GUIDE B		*		1
9	21064902	COVER STOPPER		*		1
10	NS6060350SP	NUT 3/32-56		*		1
11	21065057	KNEE PRESS ASM.				1
12	B3430521000	KNEE PRESS JOINT		*		1
13	B3428521000	PRESSER SPRING		*		1
14	SS7151550SP	SCREW 15/64-28 L=14.5		*		1
15	SS7090510SP	SCREW 9/64-40 L= 4.6		*		1
16	22934251	KNEE PAD PLATE ASM.		*		1
17	40024739	KNEE PRESS ROD MOUNTING ARM ASM		*		1
18	22934707	SCREW		*		2
19	40024738	KNEE PRESS ROD MOUNTING ARM		*		1
20	21065008	SHAFT		*		1
21	SS7151210SP	SCREW 15/64-28 L=12				1

HOW TO MAKE USE OF THIS PARTS LIST

1.Explanation of codes

1)"*"mark.....means this part is changed from the previous parts book.

As to the details of the change, refer to the "List for information of change".

2)"#01".....refer to "Note" explanation at bottom of page.

2.Codes on the "Qty" column

- Each numeral indicates the number of parts required.
- "0.1" and "2.5" indicate the length (in meters) of the respective parts.

3.Parentheses mean that the corresponding part is a subpart that constructs an assembly part.

4.Dotted lines on the Figures indicate assembly parts.

1."注記"欄の記号説明

1) "*"印.....前回のパーツブックに比較して今回変更された部品を意味します。

変更内容は、"変更情報リスト"を参照してください。

2) "#01".....ページ下の"注記"の説明を参照してください。

2.数量欄の数字は、個数を表し、0.1、2.5等の数値は、長さ（単位メートル）を表します。

3.数量欄の（ ）は、組部品を構成している子部品であることを意味します。

4.イラストページの-----枠は、組構成であることを意味します。

NUMERICAL INDEX OF PARTS

PART NO	PAGE	REF NO.	PART NO	PAGE	REF NO.	PART NO	PAGE	REF NO.
10502300	26	27	21046313	4	30	21051305	14	9
10539906	28	31	21046503	6	1	21051404	14	10
10539906	34	11	21046602	6	2	21051503	14	11
11075801	34	10	21046701	6	3	21051602	14	12
11849502	34	3	21046701	10	24	21051701	14	13
12347308	36	4	21046800	6	5	21051800	14	14
18125609	28	32	21047006	10	2	21052006	16	2
21040407	2	3	21047105	10	3	21052105	16	3
21040704	6	4	21047204	10	4	21052204	16	4
21040803	6	8	21047303	10	6	21052303	16	5
21040902	10	1	21047402	10	7	21052402	16	6
21041009	10	5	21047501	10	8	21052501	16	16
21041108	10	16	21047600	10	9	21052600	16	15
21041207	10	18	21047709	10	10	21052709	16	9
21041306	10	19	21047808	10	11	21052808	16	10
21041405	10	33	21047907	10	12	21053004	16	12
21041504	14	18	21048004	10	13	21053103	16	13
21041553	14	17	21048103	10	14	21053202	16	14
21041603	14	19	21048202	10	15	21053509	16	17
21041702	16	1	21048301	10	17	21053608	16	18
21041850	22	23	21048400	10	20	21053707	16	19
21043104	34	2	21048509	10	21	21054002	20	1
21043153	34	1	21048707	8	12	21054101	20	2
21044102	2	6	21048707	10	45	21054200	20	3
21044151	2	5	21048806	10	27	21054309	20	4
21044201	2	7	21048905	10	28	21054408	20	5
21044300	2	9	21049002	10	31	21054507	20	6
21044508	4	1	21049200	8	1	21054606	20	7
21044607	4	2	21049309	8	2	21054705	20	8
21044706	4	3	21049408	8	3	21054804	20	9
21044805	4	4	21049515	8	4	21054903	20	10
21044904	4	5	21049606	8	5	21055009	20	11
21045000	4	6	21049705	8	6	21055108	20	12
21045109	4	7	21049804	8	7	21055207	20	13
21045208	4	8	21049903	8	8	21055504	22	1
21045406	4	12	21050000	8	9	21055603	22	2
21045505	4	13	21050109	8	10	21055702	22	3
21045604	4	14	21050505	14	1	21055801	22	4
21045703	4	15	21050604	14	2	21055900	22	6
21045901	4	26	21050703	14	3	21055959	22	5
21046008	4	27~ 29·32	21050802	14	4	21056007	22	13
			21050901	14	5	21056205	22	39
21046107	4	27~ 29·32	21051008	14	6	21056312	22	9
			21051107	14	7	21056502	22	11
21046206	4	27~ 29·32	21051206	14	8	21056601	22	12

NUMERICAL INDEX OF PARTS

PART NO	PAGE	REF NO.	PART NO	PAGE	REF NO.	PART NO	PAGE	REF NO.
21056809	22	14	21063300	28	11	A3222958000	26	18
21056908	22	15	21063409	28	12	A3243997C00	2	4
21057005	22	16	21063508	28	13	B1131562000	24	17
21057104	22	17	21063607	28	14	B1213012000	16	45
21057203	22	18	21063706	28	15	B1424158000	16	36
21057302	22	19	21063805	28	17	B1506059000	6	7
21057401	22	20	21063904	28	16	B1513280000	28	6
21057401	36	8	21064001	28	30	B1617241H00	16	33
21057500	22	21	21064308	30	3	B1618241H00	16	34
21057609	22	22	21064506	36	15	B1619241H00	16	11
21057708	22	29	21064605	36	16	B1662562000	14	16
21057807	22	33	21064704	38	3	B1702012000	16	44
21057906	22	40	21064803	38	4	B1702012000	22	42
21059001	24	1	21064902	38	9	B1806038000	22	43
21059001	26	34	21065008	38	20	B2510158000	26	40
21059100	24	4	21065057	38	11	B3035141H00	10	32
21059209	24	5	21065156	34	12	B3036141H00	10	29
21059308	24	6	21067855	4	9	B3114761000	38	8
21059407	24	7	21067905	26	1	B3125012000	24	3
21059514	2	16	21068002	30	7	B3125012000	26	36
21059605	24	9	21068051	30	6	B3126012000	24	2
21059704	24	10	21068101	30	2	B3126012000	26	35
21059803	24	11	21068259	2	1	B3129012B00	26	33
21059902	24	12	21068309	2	2	B3201158000	26	4
21060009	24	13	21068556	38	1	B3203158000	26	6
21060108	24	14	21068564	38	2	B3204232000	26	13
21060207	24	15	21154216	22	27	B3205232000	26	14
21061015	26	5	21161153	24	16	B3206232000	26	15
21061056	26	3	22901805	2	14	B3207158000A	26	19
21061106	26	7	22904155	16	39	B3211210000	26	17
21061205	26	8	22904155	22	35	B3212210000	26	23
21061304	26	16	22932800	36	2	B3413227000	28	7
21061403	26	25	22933006	36	3	B3428521000	38	13
21061601	26	29	22934251	38	16	B3429521000	28	18
21061700	26	32	22934707	38	18	B3430521000	38	12
21061759	26	31	26034702	36	13	B3432521000	28	19
21061908	26	41	26234005	36	5	B71140120A0	34	13
21062500	28	1	40024738	38	19	B8204012000	34	4
21062609	28	2	40024739	38	17	B8206012000	34	8
21062708	28	3	40027078	4	27~ 29·32	B8209012000	34	7
21062807	28	4	40052262	36	9	B8213512000	36	11
21062906	28	5	40096354	32	1	B9113012000	36	14
21063003	28	8	40099160	2	18	B91212200A0	36	7
21063102	28	9	40178619	22	10	B9141372000	36	18
21063201	28	10				CM300200001	2	17

NUMERICAL INDEX OF PARTS

PART NO	PAGE	REF NO.	PART NO	PAGE	REF NO.	PART NO	PAGE	REF NO.
CM301200002	2	15	SD1000701TP	28	23	SS7110710SP	2	19
CM500300001	30	8	SD1000951SP	16	46	SS7110830SP	22	26
CQ202000000	4	10	SD1070901TP	4	31	SS7110910SP	26	38
CQ202000000	18	49	SD1111351SP	28	24	SS7110910TP	28	27
CQ303000000	22	8	SD1201201TP	10	22	SS7111120SP	24	21
CS0790721TH	16	22	SD1201201TP	16	31	SS7111120SP	26	2
CS0951019SH	10	40	SK3311600SE	34	6	SS7111810SP	26	20
CS1471012SH	10	34	SK3513200SC	34	14	SS7112420SP	12	50
CS1471012SH	16	26	SM6061552TP	8	15	SS7112810SP	26	26
D8204555D00	34	5	SM6061552TP	10	53	SS7150740SP	20	16
J106600000F	36	19	SM6061552TP	12	53	SS7150740SP	28	20
J106600000G	36	6	SM6061552TP	16	38	SS7150740SP	30	5
MC532002300	6	6	SM6081802TP	8	16	SS7151120SP	26	43
MC532002304	36	1	SM6081802TP	22	25	SS7151210SP	10	48
NS6060350SP	38	10	SM9082003SC	22	37	SS7151210SP	12	48
NS6080210SP	26	11	SS1090410SL	24	24	SS7151210SP	38	21
NS6090310SP	14	24	SS1681140SP	4	20	SS7151410TP	30	1
NS6110310SP	26	24	SS1681140SP	36	12	SS7151550SP	38	14
NS6110350SP	12	51	SS2110915SP	2	12	SS7620750SP	28	28
NS6110420SP	22	30	SS2110915SP	4	22	SS7621040SP	14	25
NS6150310SP	24	20	SS4080610SP	26	39	SS7621510SP	22	31
NS6150430SP	36	17	SS4080620TP	16	20	SS7681650TP	28	26
NS6620310SP	28	29	SS5060410SP	26	9	SS8090410SP	38	6
NS6620310SP	36	10	SS6080410SP	26	28	SS8110510SP	26	12
NS6680320SP	10	30	SS6110480SP	30	4	SS8150310SP	6	9
NS6680320SP	20	17	SS6110710TP	6	12	SS8150710SP	4	21
NS6680320SP	22	38	SS6111010SP	12	49	SS8150710SP	8	17
NS6680320SP	24	18	SS6111210SP	6	13	SS8150710SP	10	52
NS6680320SP	26	37	SS6121610TP	20	14	SS8150710SP	12	52
NS6680410SP	4	19	SS6151440SP	6	11	SS8150710SP	16	42
NS6680410SP	10	23	SS6151440SP	22	41	SS8150710SP	22	34
NS6680410SP	16	47	SS6151920SP	2	13	SS8150710SP	26	30
NS6720440SP	8	11	SS6151920SP	16	43	SS8151150SP	16	41
PH0400402C0	38	5	SS6621840SP	20	15	SS8151150SP	22	28
PS0250142KP	10	42	SS6660622TP	14	15	SS8151550SP	4	16
PS0300201KP	14	22	SS7060310SP	2	8	SS8151550SP	22	32
PT0405600SH	4	18	SS7081310SP	26	10	SS8620610TP	16	21
RE0400000K0	4	24	SS7090510SP	38	15	SS8660330SP	10	35
RE0700000K0	16	37	SS7090610SP	24	22	SS8660340SP	6	10
RE0800000K0	8	13	SS7090620TP	16	23	SS8660340SP	14	23
RE0800000K0	10	47	SS7090710SP	2	11	SS8660512TP	14	21
SD0600321SP	24	19	SS7090710SP	24	23	SS8660512TP	18	48
SD0720193SP	26	21	SS7090710SP	26	42	SS8660610TP	4	25
SD0790431SP	28	22	SS7090710SP	38	7	SS8660610TP	8	14
SD0790432SP	28	33	SS7091410SP	14	20	SS8660610TP	16	40

NUMERICAL INDEX OF PARTS

PART NO	PAGE	REF NO.
SS8660610TP	22	36
SS8660612TP	4	17
SS8660612TP	10	38
SS8660612TP	14	26
SS8660942TP	10	37
SS9681610TP	28	25
SS9702110SP	4	23
TA0290301M0	22	7