

MODEL : DSU-145/145-4/145-7

List No : 0453-03

# PARTS LIST

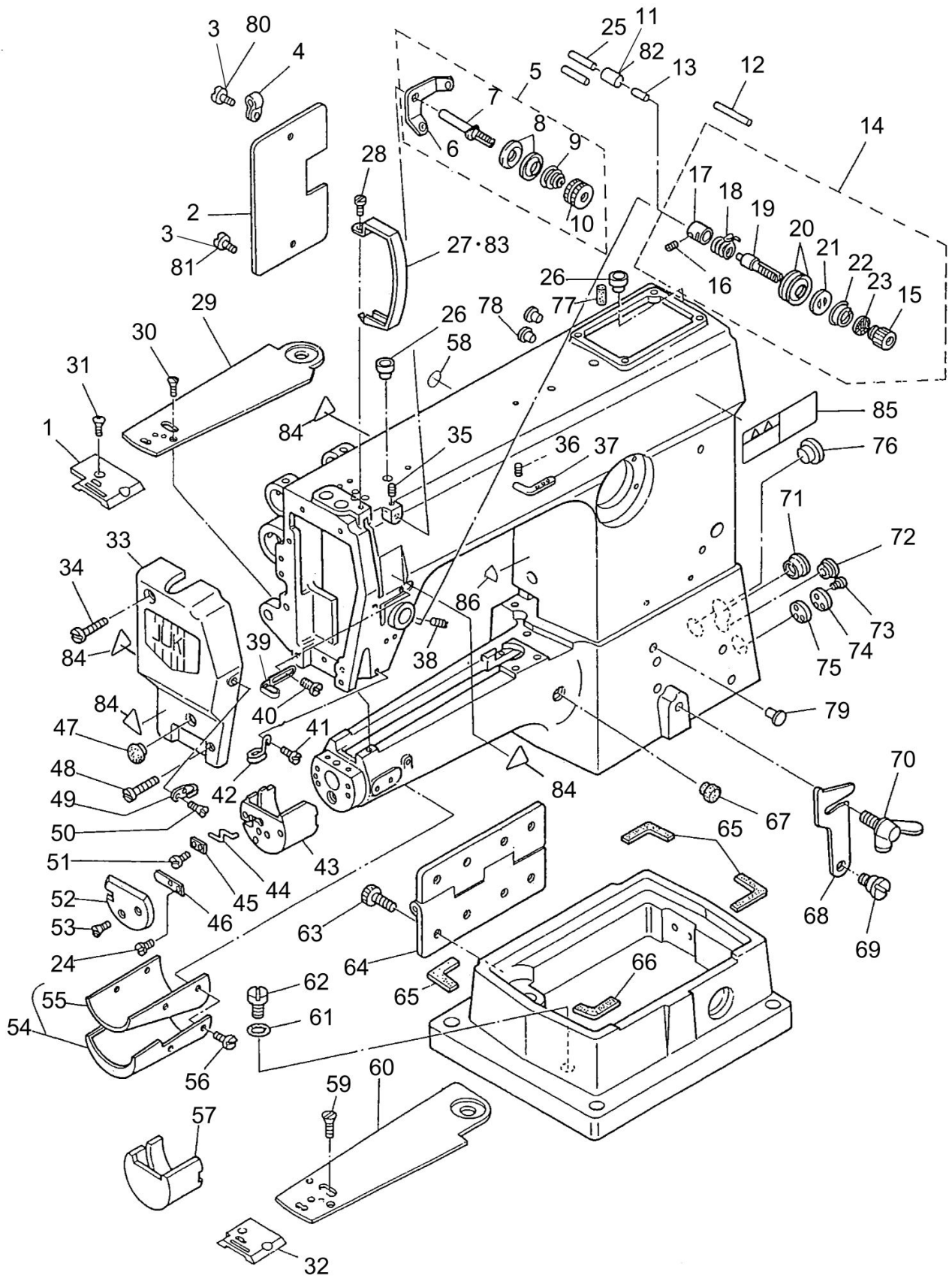
Published:09/10/2017

## CONTENTS

---

|   |    |
|---|----|
| FRAME & MISCELLANEOUS COVER COMPONENTS .....                  | 1  |
| MAIN SHAFT & NEEDLE BAR COMPONENTS .....                      | 5  |
| PRESSER BAR & UPRIGHT SHAFT & THREAD TAKE-UP COMPONENTS ..... | 7  |
| UPPER FEED MECHANISM COMPONENTS .....                         | 9  |
| TENSION RELEASE & KNEE LIFTING BAR COMPONENTS .....           | 13 |
| HOOK DRIVING SHAFT COMPONENTS .....                           | 15 |
| THREAD TRIMMER COMPONENTS .....                               | 19 |
| AUTOMATIC REVERSE FEED MECHANISM COMPONENTS .....             | 23 |
| REVERSE FEED MACHANISM LEVER COMPONENTS .....                 | 27 |
| LUBRICATION COMPONENTS .....                                  | 29 |
| TABLE & KNEE LIFFTER COMPONENTS .....                         | 31 |
| THREAD WINDER & BELT COVER & THREAD STAND COMPONENTS .....    | 33 |
| ACCESSORIES PARTS COMPONENTS .....                            | 35 |
| GAUGE COMPONENTS .....  | 37 |
| HOW TO MAKE USE OF THIS PARTS LIST .....                      | 39 |

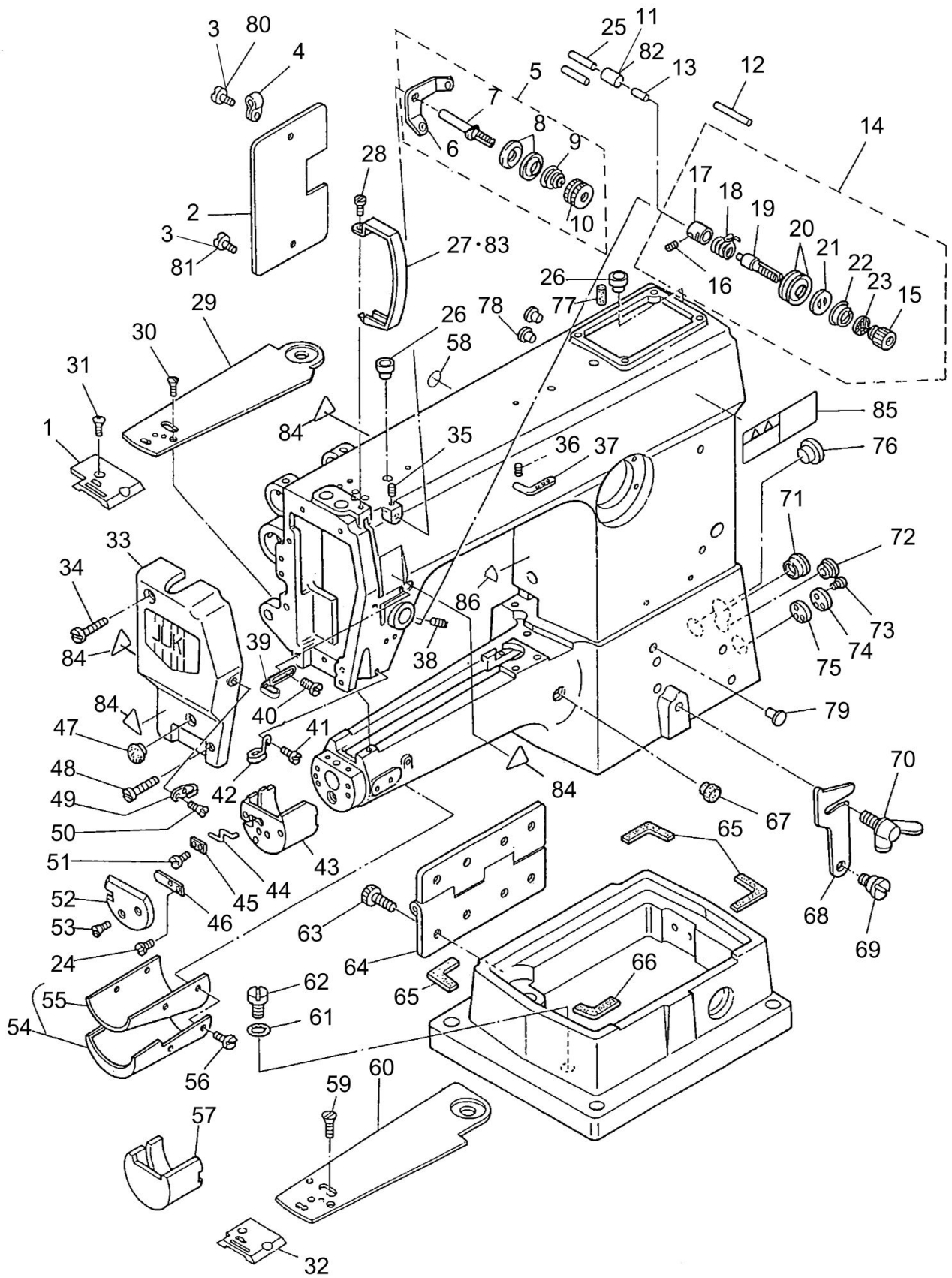
FRAME & MISCELLANEOUS COVER COMPONENTS



FRAME & MISCELLANEOUS COVER COMPONENTS

| No. | Parts No.    | Parts name                   | Remarks          | Level | Cons | Qty |
|-----|--------------|------------------------------|------------------|-------|------|-----|
| 1   | B1105145000  | THROAT PLATE                 | FOR DSU-145      |       |      | 1   |
| 2   | B1118141H0AA | SIDE PLATE                   |                  |       |      | 1   |
| 3   | SS7110710SP  | SCREW 11/64-40 L=7           |                  |       |      | 2   |
| 4   | GES12155000  | CLIP C                       |                  |       |      | 1   |
| 5   | D3161560EA0  | TENSION POST ASM.            |                  |       |      | 1   |
| 6   | D3162560E00  | THREAD GUIDE                 |                  | *     |      | 1   |
| 7   | D3162555B00  | THREAD GUIDE                 |                  | *     |      | 1   |
| 8   | B3214047000  | BOBBIN WINDER TENSION DISC   |                  | *     |      | 2   |
| 9   | D3168555H0B  | TENSION SPRING NO.1          |                  | *     |      | 1   |
| 10  | B3216047000  | BOBBIN WINDER TENSION NUT    |                  | *     |      | 1   |
| 11  | D3142141E0A  | PIN B                        |                  |       |      | 1   |
| 12  | B3127127000  | THREAD RELEASE AUXILIARY PIN | FOR DSU-145      |       |      | 1   |
| 13  | B3118552F00  | TENSION RELEASING PIN        |                  |       |      | 1   |
| 14  | D3111141EAA  | THREAD TENSION ASM.          |                  |       |      | 1   |
| 15  | 11072204     | TENSION NUT                  |                  | *     |      | 1   |
| 16  | SS8090670SP  | SCREW 9/64-40 L=5.5          |                  | *     |      | 1   |
| 17  | B3111126000  | TENSION POST SOCKET          |                  | *     |      | 1   |
| 18  | B3128012000  | TAKE-UP SPRING               |                  | *     |      | 1   |
| 19  | B3115552000  | TENSION POST                 |                  | *     |      | 1   |
| 20  | B3126012000  | THREAD TENSION DISK          |                  | *     |      | 2   |
| 21  | B3132552000  | THREAD TENSION DISK PRESSER  |                  | *     |      | 1   |
| 22  | B3129053000  | TENSION SPRING               |                  | *     |      | 1   |
| 23  | B3120125000  | ROTATING STOPPER             |                  | *     |      | 1   |
| 24  | SS5060310SP  | SCREW 3/32-56 L=2.8          |                  |       |      | 2   |
| 25  | 26028001     | STOP MOTOR LEVER SPRING PIN  | FOR DSU-145-4/-7 |       |      | 2   |
| 26  | B1156115000  | RUBBER PLUG                  |                  |       |      | 2   |
| 27  | B1123141H0A  | THREAD TAKE-UP LEVER COVER   | FOR EXPORT       |       |      | 1   |
| 28  | SS7110510SP  | SCREW 11/64-40 L=5           |                  |       |      | 1   |
| 29  | D1173145E00  | BED TOP COVER                | FOR DSU-145-4/-7 |       |      | 1   |
| 30  | SS2090710TP  | SCREW 9/64-40 L=7.2          |                  |       |      | 1   |
| 31  | SS2110915SP  | SCREW 11/64-40 L=8.5         |                  |       |      | 2   |
| 32  | D1105145E00  | THROAT PLATE                 |                  |       |      | 1   |
| 33  | B1121141HAAD | FACE PLATE ASM.              |                  |       |      | 1   |
| 34  | SS7112420SP  | SCREW 11/64-40 L=24          |                  |       |      | 1   |
| 35  | SS8110410TP  | SCREW 11/64-40 L=3.5         |                  |       |      | 1   |
| 36  | SS8110410TP  | SCREW 11/64-40 L=3.5         | FOR DSU-145      |       |      | 1   |
| 37  | B1128522000  | THREE HOLE THREAD EYELET     | FOR DSU-145      |       |      | 1   |
| 38  | SS8150710SP  | SCREW 15/64-28 L=7           |                  |       |      | 1   |
| 39  | D1126560E00A | ARM THREAD GUIDE A           |                  |       |      | 1   |
| 40  | SS5090610SP  | SCREW 9/64-40 L=6            |                  |       |      | 1   |
| 41  | SS7090620TP  | SCREW 9/64-40 L=6.1          |                  |       |      | 1   |
| 42  | B1129141H00  | THREAD GUIDE                 |                  |       |      | 1   |
| 43  | D1171145E00  | HOOK COVER                   |                  |       |      | 1   |
| 44  | D2424145E00  | PICKER                       |                  |       |      | 1   |
| 45  | D2425245E00  | PICKER HOLDER PLATE          |                  |       |      | 1   |
| 46  | D2426245E00  | SPRING                       |                  |       |      | 1   |
| 47  | TA1250406R0  | RUBBER PLUG D=12.5 L=4       |                  |       |      | 1   |

FRAME & MISCELLANEOUS COVER COMPONENTS



FRAME & MISCELLANEOUS COVER COMPONENTS

| No. | Parts No.   | Parts name                     | Remarks                            | Level | Cons | Qty |
|-----|-------------|--------------------------------|------------------------------------|-------|------|-----|
| 48  | SS6111610SP | SCREW 11/64-40 L=16            |                                    |       |      | 1   |
| 49  | B1131141H00 | FRAME THREAD GUIDE B           |                                    |       |      | 1   |
| 50  | SS2090710TP | SCREW 9/64-40 L=7.2            |                                    |       |      | 1   |
| 51  | D2435245E00 | SCREW                          |                                    |       |      | 2   |
| 52  | D2429145E00 | PICKER COVER                   |                                    |       |      | 1   |
| 53  | D2436245E00 | SCREW                          |                                    |       |      | 2   |
| 54  | B11781450A0 | CYLINDER COVER ASM.            |                                    |       |      | 1   |
| 55  | B1179145000 | CYLINDER COVER                 |                                    | *     |      | 1   |
| 56  | SS2090710SL | SCREW 9/64-40 L=7              |                                    |       |      | 4   |
| 57  | B1171145000 | HOOK COVER                     | FOR DSU-145                        |       |      | 1   |
| 58  | 22901805    | GROUND MARK                    |                                    |       |      | 1   |
| 59  | SS2090710SP | SCREW 9/64-40 L=7              | FOR DSU-145                        |       |      | 3   |
| 60  | B1173145000 | BED COVER                      | FOR DSU-145                        |       |      | 1   |
| 61  | RO061180100 | RUBBER RING                    |                                    |       |      | 1   |
| 62  | SS7680870SP | SCREW 9/32 L=8.0               |                                    |       |      | 1   |
| 63  | SM6081552TP | SCREW M8 L=15                  |                                    |       |      | 8   |
| 64  | B1128246000 | HINGE                          |                                    |       |      | 1   |
| 65  | B118324500A | GASKET A                       |                                    |       |      | 3   |
| 66  | B118324500B | GASKET B                       |                                    |       |      | 1   |
| 67  | TA1250406R0 | RUBBER PLUG D=12.5 L=4         |                                    |       |      | 1   |
| 68  | B1117246000 | HOOK                           |                                    |       |      | 1   |
| 69  | SD0800352SP | HINGE SCREW D=8 H=3.5          |                                    |       |      | 1   |
| 70  | B1116246000 | WING BOLT                      |                                    |       |      | 1   |
| 71  | TA2100904R0 | RUBBER PLUG                    |                                    |       |      | 1   |
| 72  | TA1120804R0 | RUBBER PLUG                    |                                    |       |      | 1   |
| 73  | SS7060610SP | SCREW 3/32-56 L=5.5            |                                    |       |      | 3   |
| 74  | B1181245000 | BUSHING COVER REAR             |                                    |       |      | 1   |
| 75  | B1182245000 | BUSHING COVER GASKET           |                                    |       |      | 1   |
| 76  | B1180245000 | PLUG                           |                                    |       |      | 1   |
| 77  | B3517009000 | OIL FELT REAR                  |                                    |       |      | 1   |
| 78  | TA0550604R0 | RUBBER PLUG                    |                                    |       |      | 2   |
| 79  | TA0750704R0 | RUBBER PLUG                    |                                    |       |      | 1   |
| 80  | SS7110710SP | SCREW 11/64-40 L=7             | FOR DSU-145-7                      |       |      | 1   |
| 81  | SS7111410SP | SCREW 11/64-40 L=14            | FOR DSU-145-7                      |       |      | 1   |
| 82  | D3142141E00 | PIN B                          | SELECTIVE PART<br>FOR DSU-145-4/-7 |       |      | 1   |
| 83  | 11415205    | THREAD TAKE-UP LEVER COVER(JE) | FOR USE IN LAPAN                   |       |      | 1   |
| 84  | CM300200001 | ATTENTION SEAL                 | FOR DSU-145-4/-7                   |       |      | 4   |
| 85  | CM301300001 | SAFETY LABEL                   |                                    |       |      | 1   |
| 86  | CM300200001 | ATTENTION SEAL                 | FOR DSU-145-7                      |       |      | 1   |

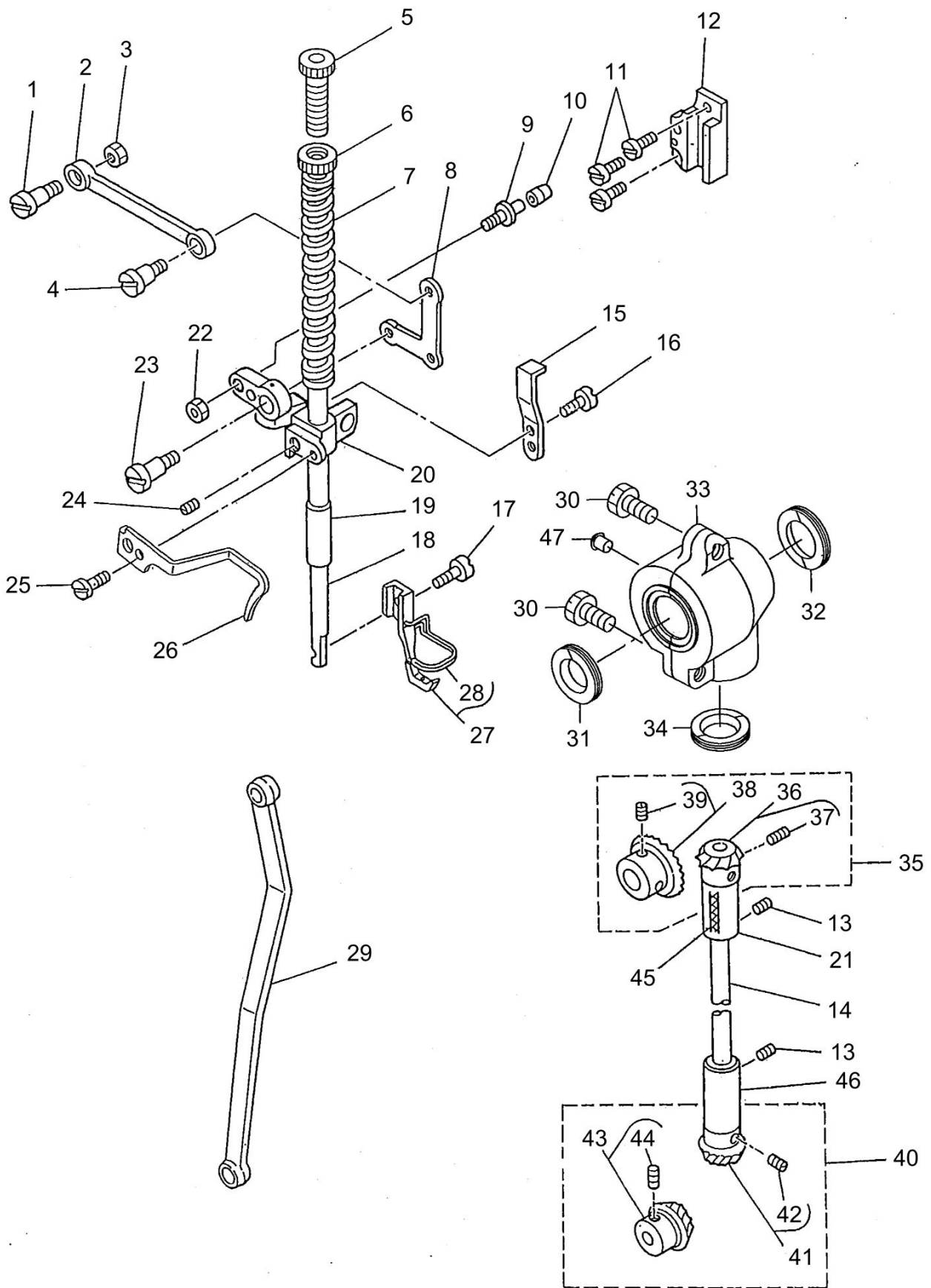


MAIN SHAFT & NEEDLE BAR COMPONENTS

| No. | Parts No.    | Parts name                     | Remarks     | Level | Cons | Qty |
|-----|--------------|--------------------------------|-------------|-------|------|-----|
| 1   | D1201141E00A | MAIN SHAFT                     |             |       |      | 1   |
| 2   | 21205109     | REAR BUSHING                   |             |       |      | 1   |
| 3   | SS8151550SP  | SCREW 15/64-28 L=15            |             |       |      | 1   |
| 4   | 22901409     | NEEDLE BAR UPPER BUSH CAP      |             |       |      | 1   |
| 5   | 22906101     | NEEDLE BAR BUSHING UPPER       |             |       |      | 1   |
| 6   | B1211141H00  | FEED ECCENTRIC CAM             |             |       |      | 1   |
| 7   | SS8150710SP  | SCREW 15/64-28 L=7             |             |       |      | 2   |
| 8   | B1213012000  | FELT RETAINER                  |             |       |      | 1   |
| 9   | B1212012000  | OIL FELT                       |             |       |      | 1   |
| 10  | B1211226000  | ECCENTRIC RETAINER HOUSING     |             |       |      | 1   |
| 11  | 22904155     | MAIN SHAFT THRUST COLLAR ASM.  |             |       |      | 1   |
| 12  | SS8660610TP  | SCREW 1/4-40 L=6               |             | *     |      | 2   |
| 13  | B1203141H00  | MAIN SHAFT BUSHING INTERMEDIA  |             |       |      | 1   |
| 14  | D1403141E00  | NEEDLE BAR BUSHING LOWER       |             |       |      | 1   |
| 15  | SS8151550SP  | SCREW 15/64-28 L=15            |             |       |      | 1   |
| 16  | B3001141HA0  | FEED DRIVE ECCENTRIC CAM ASM.  |             |       |      | 1   |
| 17  | SS8660610TP  | SCREW 1/4-40 L=6               |             | *     |      | 2   |
| 18  | B1401145000  | NEEDLE BAR                     |             |       |      | 1   |
| 19  | B3002141H00  | CRANK CONNECTING ROD           |             |       |      | 1   |
| 20  | SS7080510TP  | SCREW 1/8-44 L=4.5             |             |       |      | 1   |
| 21  | SS8151150SP  | SCREW 15/64-28 L=10.5          |             |       |      | 1   |
| 22  | D1418141E00  | NEEDLE BAR THREAD GUIDE        |             |       |      | 1   |
| 23  | B1402141H0A  | ARM SHAFT BUSHING FRONT        |             |       |      | 1   |
| 24  | MDP170B2100  | NEEDLE DPX17 #21               |             |       |      | 1   |
| 25  | SS8660610TP  | SCREW 1/4-40 L=6               |             |       |      | 2   |
| 26  | SS8681950SP  | SCREW 9/32-28 L=19             |             |       |      | 1   |
| 27  | D1206141E00  | COUNTERWEIGT                   |             |       |      | 1   |
| 28  | SS7681750TP  | SCREW 9/32-28 L=16.5           |             |       |      | 1   |
| 29  | B1901141HA0  | THREAD TAKE-UP LEVER ASM.      |             |       |      | 1   |
| 30  | B1901141H00  | THREAD TAKE-UP LEVER           |             | *     |      | 1   |
| 31  | B1904115000  | THREAD TAKE-UP CRANK SHAFT STU |             | *     |      | 1   |
| 32  | B1210141H00  | NEEDLE BAR CRANK               |             | *     |      | 1   |
| 33  | B1408141H00  | NEEDLE BAR CRANK ROD           |             | *     |      | 1   |
| 34  | B1903141H00  | END SCREW LEFT                 |             | *     |      | 1   |
| 35  | B14115520A0  | NEEDLE BAR CONNECTING ASM.     |             | *     |      | 1   |
| 36  | SS6090670TP  | SCREW 9/64-40 L=6              |             | *     |      | 1   |
| 37  | B1902115000  | THREAD TAKE-UP CRANK           |             | *     |      | 1   |
| 38  | B1414555000  | SLIDE BLOCK                    |             |       |      | 1   |
| 39  | SS8151550SP  | SCREW 15/64-28 L=15            |             |       |      | 2   |
| 40  | 21295308     | HAND WHEEL                     |             |       |      | 1   |
| 41  | 22860704     | HAND WHEEL                     | FOR DSU-145 |       |      | 1   |
| 42  | SS8151550SP  | SCREW 15/64-28 L=15            |             |       |      | 1   |
| 43  | B1203051000  | OIL FELT                       |             |       |      | 1   |



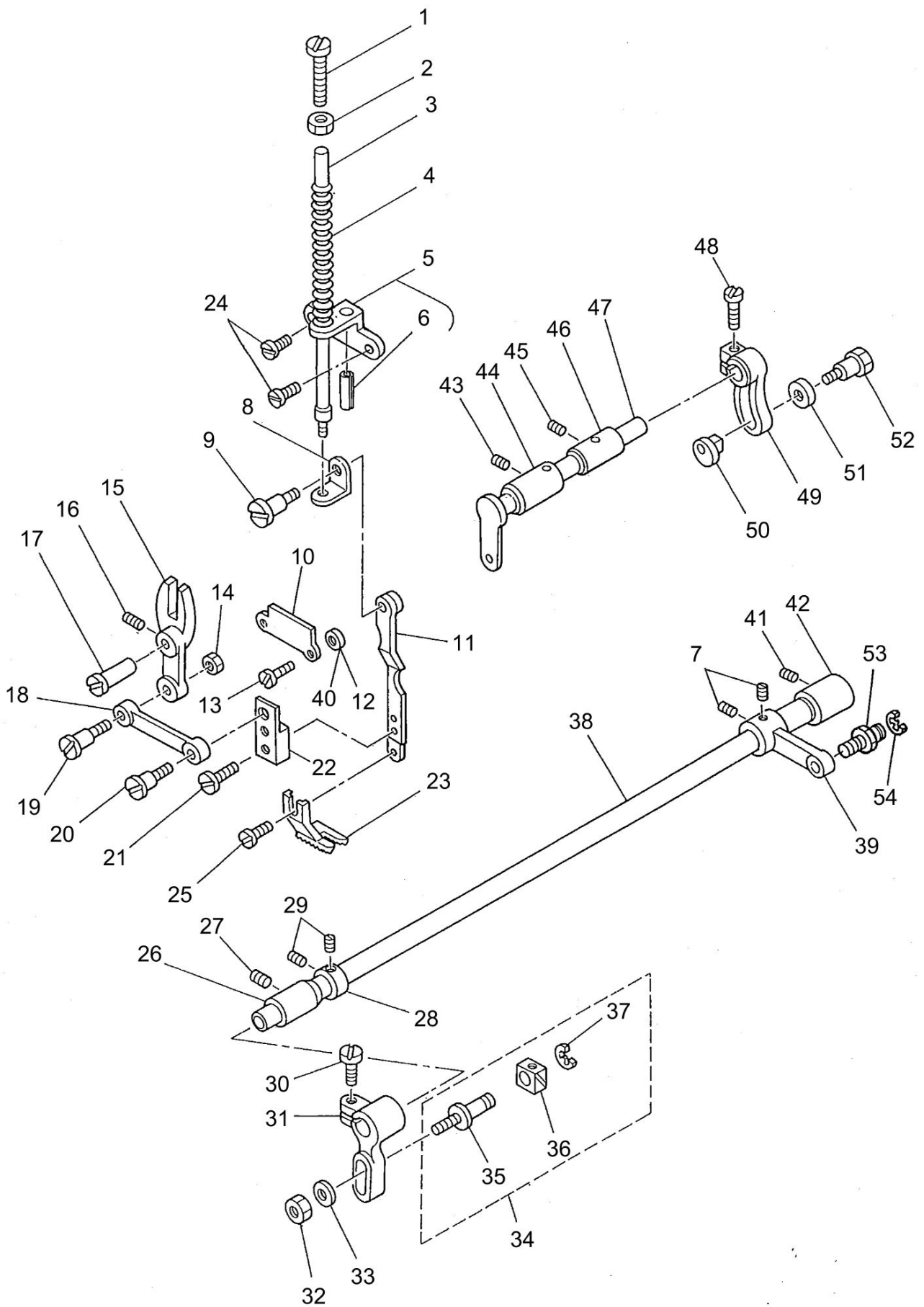
PRESSER BAR & UPRIGHT SHAFT & THREAD TAKE-UP COMPONENTS



PRESSER BAR & UPRIGHT SHAFT & THREAD TAKE-UP COMPONENTS

| No. | Parts No.   | Parts name                   | Remarks | Level | Cons | Qty |
|-----|-------------|------------------------------|---------|-------|------|-----|
| 1   | SD0850751SP | HINGE SCREW D=8.50 H=7.5     |         |       |      | 1   |
| 2   | B3005141H00 | CONNECTING LINK              |         |       |      | 1   |
| 3   | NS6150310SP | NUT 15/64-28                 |         |       |      | 1   |
| 4   | B3015141H00 | HINGE SCREW                  |         |       |      | 1   |
| 5   | B1509141H00 | PRESSER SPRING REGULATOR     |         |       |      | 1   |
| 6   | 22907604    | PRESSER SPRING REGULATOR NUT |         |       |      | 1   |
| 7   | B1510141H00 | PRESSER SPRING               |         |       |      | 1   |
| 8   | B3006141H00 | L-SHAPED LINK                |         |       |      | 1   |
| 9   | B3032141H00 | CONNECTING STUD SHAFT        |         |       |      | 1   |
| 10  | B3031141H00 | CONNECTING STUD              |         |       |      | 1   |
| 11  | SS7111410TP | SCREW 11/64-40 L=14          |         |       |      | 3   |
| 12  | B3020141H00 | SLIDE BLOCK GUIDE            |         |       |      | 1   |
| 13  | SS8151550SP | SCREW 15/64-28 L=15          |         |       |      | 2   |
| 14  | B1301145000 | UPRIGHT SHAFT                |         |       |      | 1   |
| 15  | B1515141H00 | LIFTING LEVER                |         |       |      | 1   |
| 16  | SS7110840SP | SCREW 11/64-40 L=7.8         |         |       |      | 2   |
| 17  | SS7091110SP | SCREW 9/64-40 L=10.5         |         |       |      | 1   |
| 18  | B1501141H00 | PRESSER BAR                  |         |       |      | 1   |
| 19  | B1510155000 | PRESSER BAR LOWER BUSHING    |         |       |      | 1   |
| 20  | 21103304    | PRESSER BAR GUIDE BRACKET    |         |       |      | 1   |
| 21  | B1302201000 | BUSHING UPPER                |         |       |      | 1   |
| 22  | NS6660430SP | NUT 1/4-40                   |         |       |      | 1   |
| 23  | B3015141H00 | HINGE SCREW                  |         |       |      | 1   |
| 24  | SS8660610TP | SCREW 1/4-40 L=6             |         |       |      | 1   |
| 25  | SS6110610TP | SCREW 11/64-40 L=6           |         |       |      | 1   |
| 26  | 21286802    | THREAD GUIDE                 |         |       |      | 1   |
| 27  | D1525141EA0 | PRESSER FOOT ASM.            |         |       |      | 1   |
| 28  | B1421141H00 | FINGER GUARD                 |         | *     |      | 1   |
| 29  | B3030145000 | NEEDLE BAR FRAME ROD         |         |       |      | 1   |
| 30  | SS9181520CP | SCREW 9/32-20 L=15.0         |         |       |      | 2   |
| 31  | B1310012000 | OIL SEAL (A)                 |         |       |      | 1   |
| 32  | B1311012000 | OIL SEAL (B)                 |         |       |      | 1   |
| 33  | B1308012000 | GEAR CASE                    |         |       |      | 1   |
| 34  | B1312012000 | OIL SEAL (C)                 |         |       |      | 1   |
| 35  | B13061550B0 | GEAR & PINION ASM. UPPER     |         |       |      | 1   |
| 36  | B13061550C0 | GEAR & PINION ASM.           |         | *     |      | 1   |
| 37  | SS8660810TP | SCREW 1/4-40 L=8             |         | *     |      | 2   |
| 38  | B13050120A0 | GEAR ASM.                    |         | *     |      | 1   |
| 39  | SS8660810TP | SCREW 1/4-40 L=8             |         | *     |      | 2   |
| 40  | B13071550D0 | GEAR & PINION ASM. LOWER     |         |       |      | 1   |
| 41  | B13071550A0 | GEAR ASM. LARGE              |         | *     |      | 1   |
| 42  | SS8660810TP | SCREW 1/4-40 L=8             |         | *     |      | 2   |
| 43  | B13081550A0 | PINION ASM.                  |         | *     |      | 1   |
| 44  | SS8660810TP | SCREW 1/4-40 L=8             |         | *     |      | 2   |
| 45  | CQ202000000 | OIL WICK                     |         |       |      | 0.1 |
| 46  | B1303271000 | BUSHING LOWER                |         |       |      | 1   |
| 47  | TA0550604R0 | RUBBER PLUG                  |         |       |      | 1   |

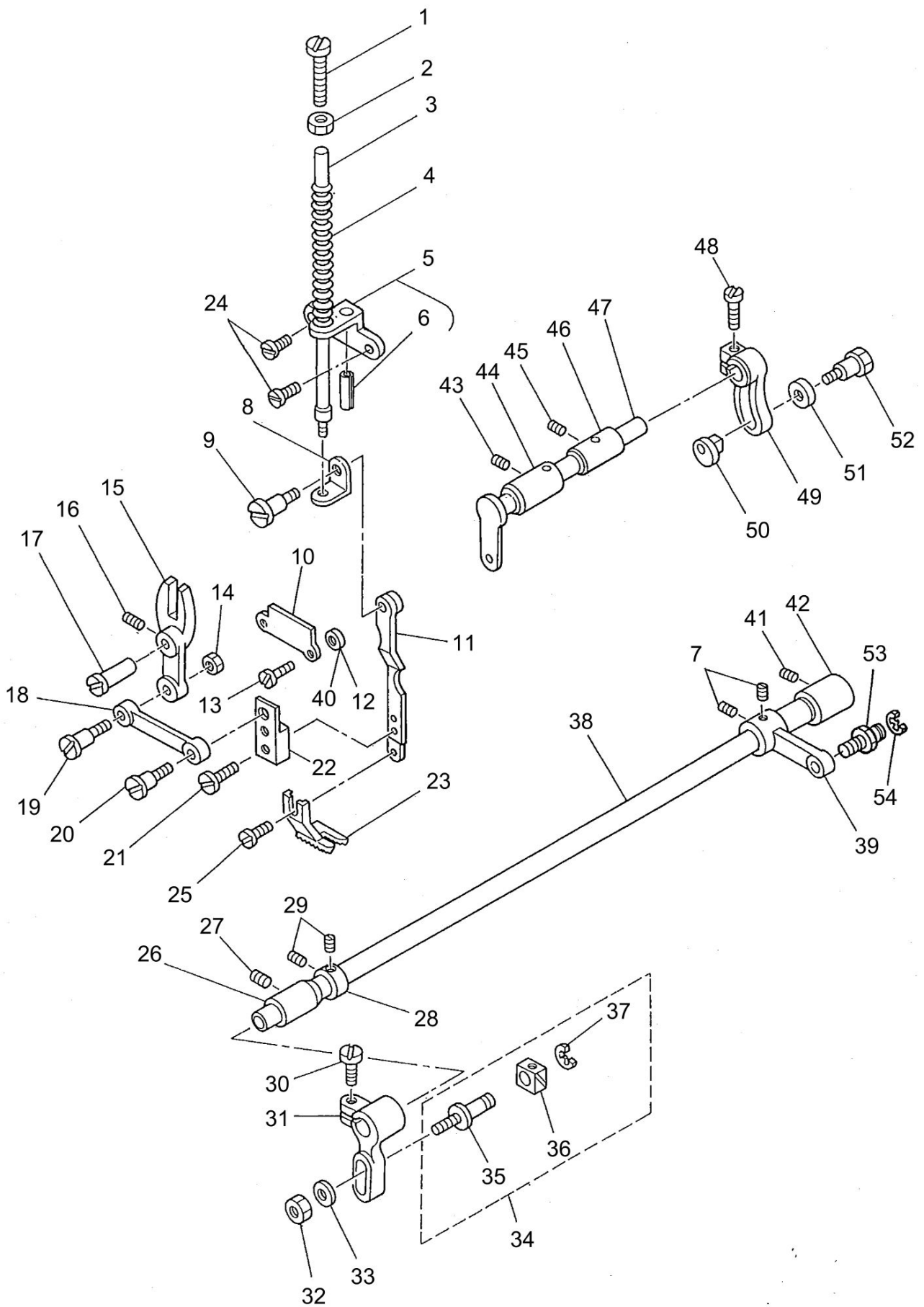
UPPER FEED MECHANISM COMPONENTS



UPPER FEED MECHANISM COMPONENTS

| No. | Parts No.    | Parts name                    | Remarks        | Level | Cons | Qty |
|-----|--------------|-------------------------------|----------------|-------|------|-----|
| 1   | B3036141H00  | ADJUSTING THUMB SCREW         |                |       |      | 1   |
| 2   | NS6680320SP  | NUT 9/32-28                   |                |       |      | 1   |
| 3   | B3034141H00  | SPRING POLE                   |                |       |      | 1   |
| 4   | B3033141H00  | SPRING                        |                |       |      | 1   |
| 5   | B3037141HA0  | SPRING BASE ASM.              |                |       |      | 1   |
| 6   | PS0300201KP  | SPRING PIN 3.0X20             |                | *     |      | 1   |
| 7   | SS8660530TP  | SCREW 1/4-40 L=4.5            |                |       |      | 1   |
| 8   | B3035141H00  | RETAINING PLATE               |                |       |      | 1   |
| 9   | B3016141H00  | HINGE SCREW B                 |                |       |      | 1   |
| 10  | B3012141H00A | WALKING BAR DRIVING LINK      |                |       |      | 1   |
| 11  | B3014141H00B | L-SHAPED ROD                  |                |       |      | 1   |
| 12  | B3013141H0A  | WASHER                        |                |       |      | 2   |
| 13  | SS7110910SP  | SCREW 11/64-40 L=8.5          |                |       |      | 2   |
| 14  | NS6150310SP  | NUT 15/64-28                  |                |       |      | 1   |
| 15  | B3038141H00  | SLIDE FORK                    |                |       |      | 1   |
| 16  | SS7120910TP  | SCREW 3/16-28 L=9             |                |       |      | 1   |
| 17  | 21272802     | BRANCH LINK SHAFT             |                |       |      | 1   |
| 18  | B3005141H00  | CONNECTING LINK               |                |       |      | 1   |
| 19  | SD0850751SP  | HINGE SCREW D=8.50 H=7.5      |                |       |      | 1   |
| 20  | B3015141H00  | HINGE SCREW                   |                |       |      | 1   |
| 21  | SS7091110SP  | SCREW 9/64-40 L=10.5          |                |       |      | 2   |
| 22  | B3017141H00B | CONNECTING LINK HOLDER        |                |       |      | 1   |
| 23  | B1526145000  | PRESSURE FOOT                 |                |       |      | 1   |
| 24  | SS7111120SP  | SCREW 11/64-40 L=10.5         |                |       |      | 2   |
| 25  | SS7090610SP  | SCREW 9/64-40 L=6             |                |       |      | 1   |
| 26  | 10106102     | BUSHING                       |                |       |      | 1   |
| 27  | SS8150750SP  | SCREW 15/64-28 L=7            |                |       |      | 1   |
| 28  | 22904155     | MAIN SHAFT THRUST COLLAR ASM. |                |       |      | 1   |
| 29  | SS8660610TP  | SCREW 1/4-40 L=6              |                |       |      | 2   |
| 30  | SS6121210SP  | SCREW 3/16-28 L=12            |                |       |      | 1   |
| 31  | B3025141H00A | CONNECTING ARM                |                |       |      | 1   |
| 32  | NS6160520SP  | NUT 1/4-24                    |                |       |      | 1   |
| 33  | WP0650876SD  | WASHER 6.5X13X0.8             |                |       |      | 1   |
| 34  | B3023141HA0A | SLIDE BLOCK ASM.              |                |       |      | 1   |
| 35  | B3023141H00A | SLIDE BLOCK PIN               |                | *     |      | 1   |
| 36  | B3024141H00  | SLIDE BLOCK                   |                | *     |      | 1   |
| 37  | RE0400000K0  | E-RING 4                      |                | *     |      | 1   |
| 38  | B3026141H00  | UPPER FEED DRIVING SHAFT      |                |       |      | 1   |
| 39  | B3029145000  | CRANK                         |                |       |      | 1   |
| 40  | B3013141H0B  | WASHER                        | SELECTIVE PART |       |      | 2   |
| 41  | SS8150750SP  | SCREW 15/64-28 L=7            |                |       |      | 1   |
| 42  | B3028141H00  | BUSHING REAR                  |                |       |      | 1   |
| 43  | SS8150510TP  | SCREW 15/64-28 L=4.7          |                |       |      | 1   |
| 44  | B3011141H0A  | BUSHING FRONT                 |                |       |      | 1   |
| 45  | SS8150510TP  | SCREW 15/64-28 L=4.7          |                |       |      | 1   |
| 46  | B3011141H00  | BUSHING                       |                |       |      | 1   |
| 47  | B3003141H00A | UPPER FEED DRIVING SHAFT      |                |       |      | 1   |

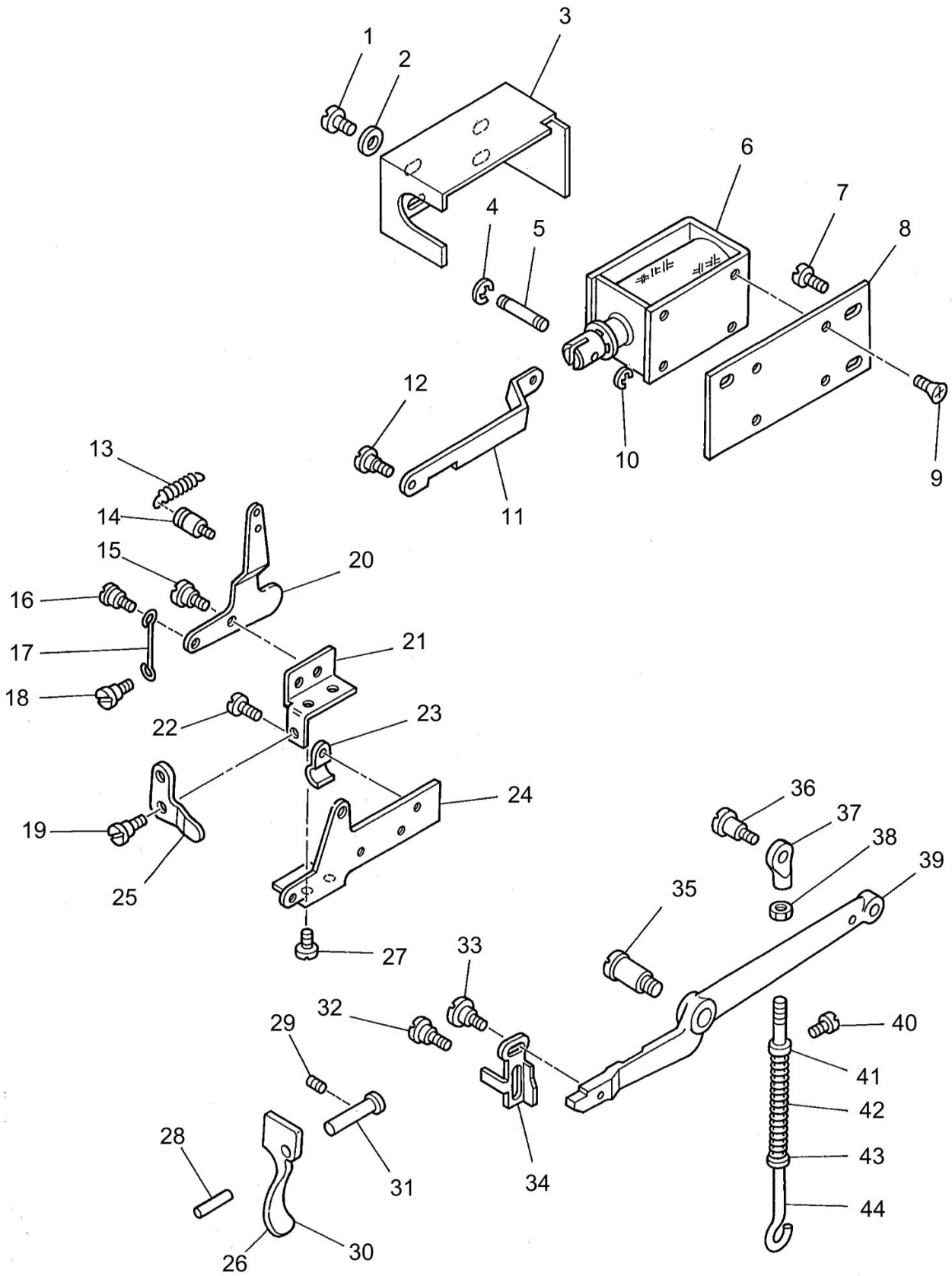
UPPER FEED MECHANISM COMPONENTS



UPPER FEED MECHANISM COMPONENTS

| No. | Parts No.   | Parts name            | Remarks | Level | Cons | Qty |
|-----|-------------|-----------------------|---------|-------|------|-----|
| 48  | SS6151440SP | SCREW 15/64-28 L=14   |         |       |      | 1   |
| 49  | B3007141H00 | UPPER FEED SPRING ROD |         |       |      | 1   |
| 50  | B3009141H0A | NUT                   |         |       |      | 1   |
| 51  | B3010141H00 | WASHER                |         |       |      | 1   |
| 52  | B3008141H00 | HINGE SCREW           |         |       |      | 1   |
| 53  | B1424158000 | HINGE SCREW           |         |       |      | 1   |
| 54  | RE0700000K0 | E-RING 7              |         |       |      | 1   |

TENSION RELEASE & KNEE LIFTING BAR COMPONENTS

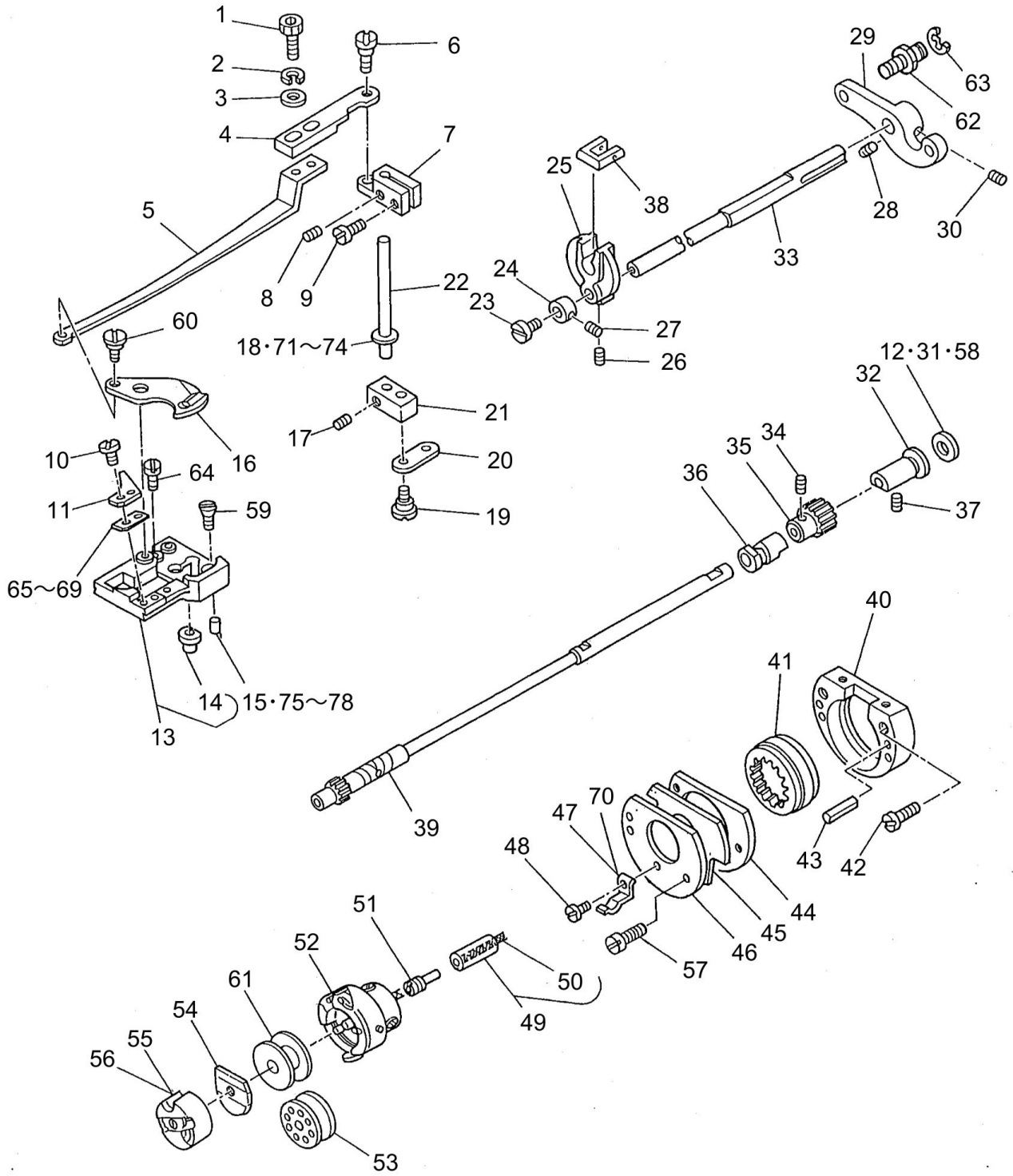


TENSION RELEASE & KNEE LIFTING BAR COMPONENTS

| No. | Parts No.    | Parts name                   | Remarks          | Level | Cons | Qty |
|-----|--------------|------------------------------|------------------|-------|------|-----|
| 1   | SM4030601SB  | SCREW M3 L=6                 |                  |       |      | 4   |
| 2   | WP0320501SC  | WASHER M3                    |                  |       |      | 4   |
| 3   | D3157141E0A  | SOLENOID COVER               |                  |       |      | 1   |
| 4   | RE0250000K0  | E-RING 2.5                   |                  |       |      | 1   |
| 5   | D3156141E00  | SOLENOID PIN                 |                  |       |      | 1   |
| 6   | D3153141E00  | TENSION RELEASE SOLENOID     |                  |       |      | 1   |
| 7   | SS7110910SP  | SCREW 11/64-40 L=8.5         |                  |       |      | 3   |
| 8   | D3154141E00  | SOLENOID INSTALLING PLATE    |                  |       |      | 1   |
| 9   | SM1030601SA  | SCREW M3 L=6                 |                  |       |      | 4   |
| 10  | RE0250000K0  | E-RING 2.5                   |                  |       |      | 1   |
| 11  | D3155141E00  | SOLENOID ROD                 |                  |       |      | 1   |
| 12  | SD0550271TP  | HINGE SCREW D=5.50 H=2.7     |                  |       |      | 1   |
| 13  | D3149141E00  | SPRING                       |                  |       |      | 1   |
| 14  | 10120004     | SPRING SUSPENSION            |                  |       |      | 1   |
| 15  | SD0630301SP  | HINGE SCREW D=6.35 H=3       |                  |       |      | 1   |
| 16  | SD0550271TP  | HINGE SCREW D=5.50 H=2.7     |                  |       |      | 1   |
| 17  | D3159141E00  | CONNECTING BAR               |                  |       |      | 1   |
| 18  | SD0550271TP  | HINGE SCREW D=5.50 H=2.7     |                  |       |      | 1   |
| 19  | SD0640321SP  | HINGE SCREW D=6.35 H=3.2     |                  |       |      | 1   |
| 20  | D3152141E00  | TENSION RELEASE LINK B       |                  |       |      | 1   |
| 21  | D3151141E00  | TENSION RELEASE BRACKET      |                  |       |      | 1   |
| 22  | SS7110710SP  | SCREW 11/64-40 L=7           |                  |       |      | 3   |
| 23  | B3538112000  | OIL RETURN TUBE HOLDER       |                  |       |      | 1   |
| 24  | D3160141E00  | TENSION RELEASE PLATE        |                  |       |      | 1   |
| 25  | D3158141E00  | TENSION RELEASE LINK A       |                  |       |      | 1   |
| 26  | D1512141E00  | HAND LIFTER                  | FOR DSU-145-4/-7 |       |      | 1   |
| 27  | SS7120640SP  | SCREW 3/16-28 L=6            |                  |       |      | 2   |
| 28  | PS0300132KH  | SPRING PIN 3X13              |                  |       |      | 1   |
| 29  | SS8110750SP  | SCREW 11/64-40 L=6.5         |                  |       |      | 1   |
| 30  | B1512141H00  | HAND LIFTER                  | FOR DSU-145      |       |      | 1   |
| 31  | B1513141H00  | HAND LIFTER SHAFT            |                  |       |      | 1   |
| 32  | SD0600271SP  | HINGE SCREW D=6 H=2.7        |                  |       |      | 1   |
| 33  | SD0600321SP  | HINGE SCREW D=6 H=3.2        |                  |       |      | 1   |
| 34  | B3134141H00  | TENSION RELEASE PLATE        |                  |       |      | 1   |
| 35  | SD0991551SP  | HINGE SCREW D=9.9 H=5.5      |                  |       |      | 1   |
| 36  | SD0790351SP  | HINGE SCREW D=7.9 H=3.5      |                  |       |      | 1   |
| 37  | B3416141H00A | SWIVEL                       |                  |       |      | 1   |
| 38  | NS6620310SP  | NUT 3/16-32                  |                  |       |      | 1   |
| 39  | D3410141E0AA | KNEE LIFTER                  |                  |       |      | 1   |
| 40  | SS7110540SP  | SCREW 11/64-40 L=5           |                  |       |      | 1   |
| 41  | CS0510713SD  | SPRING REST                  |                  |       |      | 1   |
| 42  | B3414245000  | SPRING                       |                  |       |      | 1   |
| 43  | WP0621016SD  | WASHER 6.2X13X1              |                  |       |      | 1   |
| 44  | B3415145000  | LIFTING LEVER CONNECTING ROD |                  |       |      | 1   |



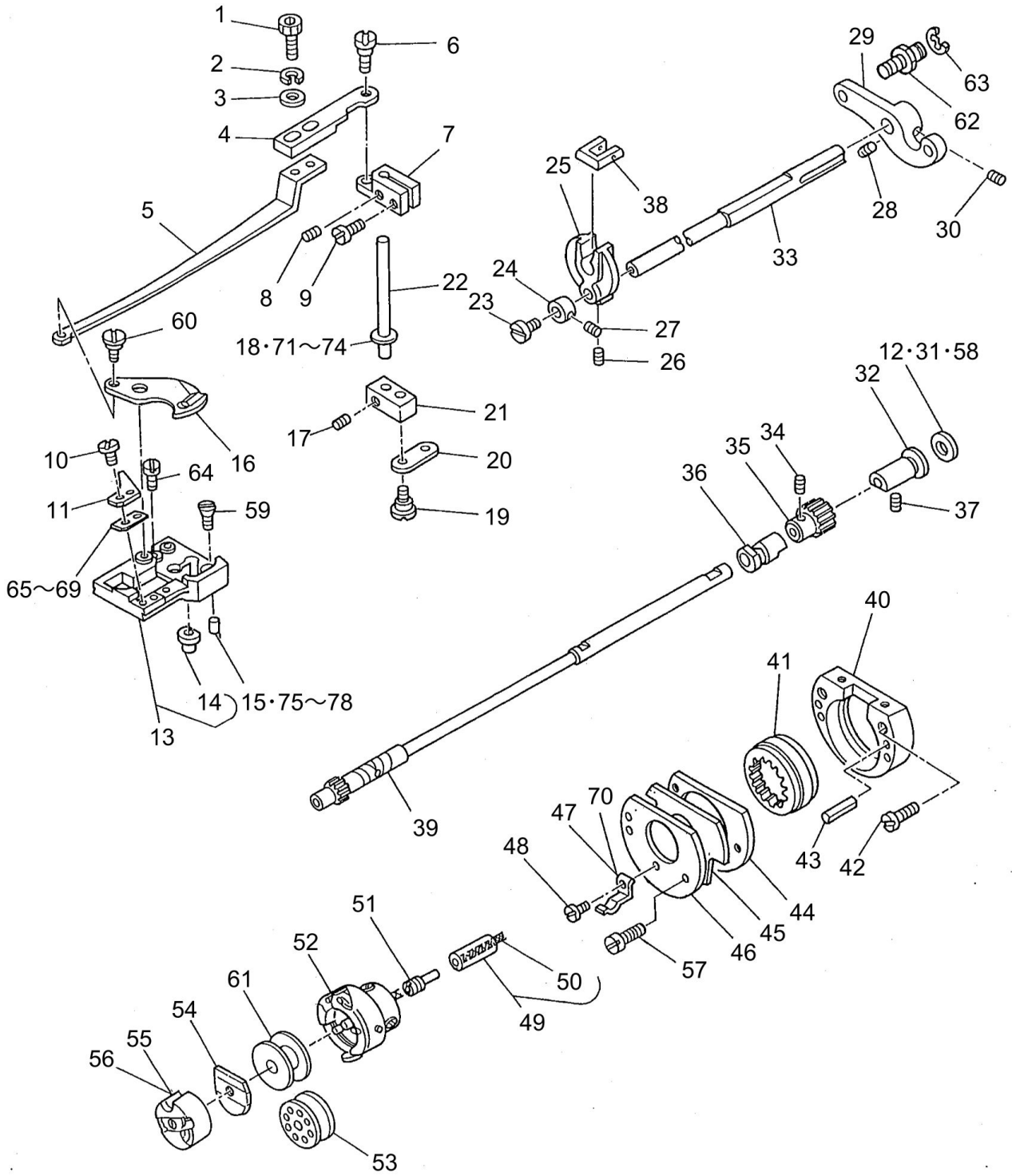
# HOOK DRIVING SHAFT COMPONENTS



HOOK DRIVING SHAFT COMPONENTS

| No. | Parts No.    | Parts name                     | Remarks            | Level | Cons | Qty |
|-----|--------------|--------------------------------|--------------------|-------|------|-----|
| 1   | SS7091410SP  | SCREW 9/64-40 L=13.5           |                    |       |      | 2   |
| 2   | WS0410002KN  | SPRING WASHER                  |                    |       |      | 2   |
| 3   | WP0371026SD  | WASHER 3.7X7X1                 |                    |       |      | 2   |
| 4   | D2420145E00  | KNIFE DRIVING PLATE B          |                    |       |      | 1   |
| 5   | D2431245E00  | KNIFE DRIVING PLATE A          |                    |       |      | 1   |
| 6   | SD0640321SP  | HINGE SCREW D=6.35 H=3.2       |                    |       |      | 1   |
| 7   | D2419245E00  | KNIFE DRIVING LINK B           |                    |       |      | 1   |
| 8   | SS8090410SP  | SCREW 9/64-40 L=3.5            |                    |       |      | 1   |
| 9   | SS7111410SP  | SCREW 11/64-40 L=14            |                    |       |      | 1   |
| 10  | SS7060310SP  | SCREW 3/32-56 L=3              |                    |       |      | 2   |
| 11  | D2402245E00  | COUNTER KNIFE                  |                    |       |      | 1   |
| 12  | B183924500A  | THRUST PLATE                   | FOR SELECTIVE PART |       |      | 1   |
| 13  | D1630145EA0A | THROAT PLATE BASE ASM.         |                    |       |      | 1   |
| 14  | B1631245000  | PIN BUSHING                    |                    | *     |      | 1   |
| 15  | B163214500C  | PIN                            |                    |       |      | 1   |
| 16  | D2401245E00  | MOVING KNIFE                   |                    |       |      | 1   |
| 17  | SS7110540SP  | SCREW 11/64-40 L=5             |                    |       |      | 2   |
| 18  | B185351200CA | HOOK SHAFT WASHER C            |                    |       |      | 1   |
| 19  | D2441141E00  | HINGE SCREW                    |                    |       |      | 2   |
| 20  | D2436141E00  | CONNECTING LINK                |                    |       |      | 1   |
| 21  | D2412245E00  | KNIFE DRIVING SHAFT ARM A      |                    |       |      | 1   |
| 22  | D2413245E00  | DRIVING SHAFT B                |                    |       |      | 1   |
| 23  | SS5110710SP  | SCREW 11/64-40 L=7             |                    |       |      | 1   |
| 24  | B1646245000  | THRUST COLLAR                  |                    |       |      | 1   |
| 25  | B1603145000  | FEED ROCKER                    |                    |       |      | 1   |
| 26  | SS8701042TP  | SCREW 5/16-24 L=10.0           |                    |       |      | 1   |
| 27  | SS8110410TP  | SCREW 11/64-40 L=3.5           |                    |       |      | 2   |
| 28  | SS8150710SP  | SCREW 15/64-28 L=7             |                    |       |      | 1   |
| 29  | B1605145000  | FEED ROCK SHAFT CRANK          |                    |       |      | 1   |
| 30  | SS8150830SP  | SCREW                          |                    |       |      | 1   |
| 31  | B183924500B  | THRUST PLATE                   |                    |       |      | 1   |
| 32  | B1803145000  | BUSHING REAR                   |                    |       |      | 1   |
| 33  | B1601145000  | FEED ROCK SHAFT                |                    |       |      | 1   |
| 34  | SS8660530TP  | SCREW 1/4-40 L=4.5             |                    |       |      | 2   |
| 35  | D2405245E00  | CAM SHAFT GEAR                 |                    |       |      | 1   |
| 36  | B1802245000  | BUSHING FRONT                  |                    |       |      | 1   |
| 37  | SS8151550SP  | SCREW 15/64-28 L=15            |                    |       |      | 1   |
| 38  | B1643145000  | FEED BAR SLIDE BLOCK A         |                    |       |      | 5   |
| 39  | B1801145000  | HOOK DRIVING SHAFT             |                    |       |      | 1   |
| 40  | B1635145000  | FEED DRIVING CAM HOLDER B      |                    |       |      | 1   |
| 41  | B1647145000  | FEED DRIVING CAM               |                    |       |      | 1   |
| 42  | B1651245000  | SCREW                          |                    |       |      | 2   |
| 43  | B1660145000  | SPRING PIN                     |                    |       |      | 2   |
| 44  | B1634145000  | FEED DRIVING CAM HOLDER A      |                    |       |      | 1   |
| 45  | B1636145000  | FEED DRIVING CAM HOLDER WASHER |                    |       |      | 1   |
| 46  | B1637145000  | FEED DRIVING CAM HOLDER PLATE  |                    |       |      | 1   |
| 47  | B1172245000  | HOOK COVER HOLDER              | FOR DSU-145        |       |      | 1   |

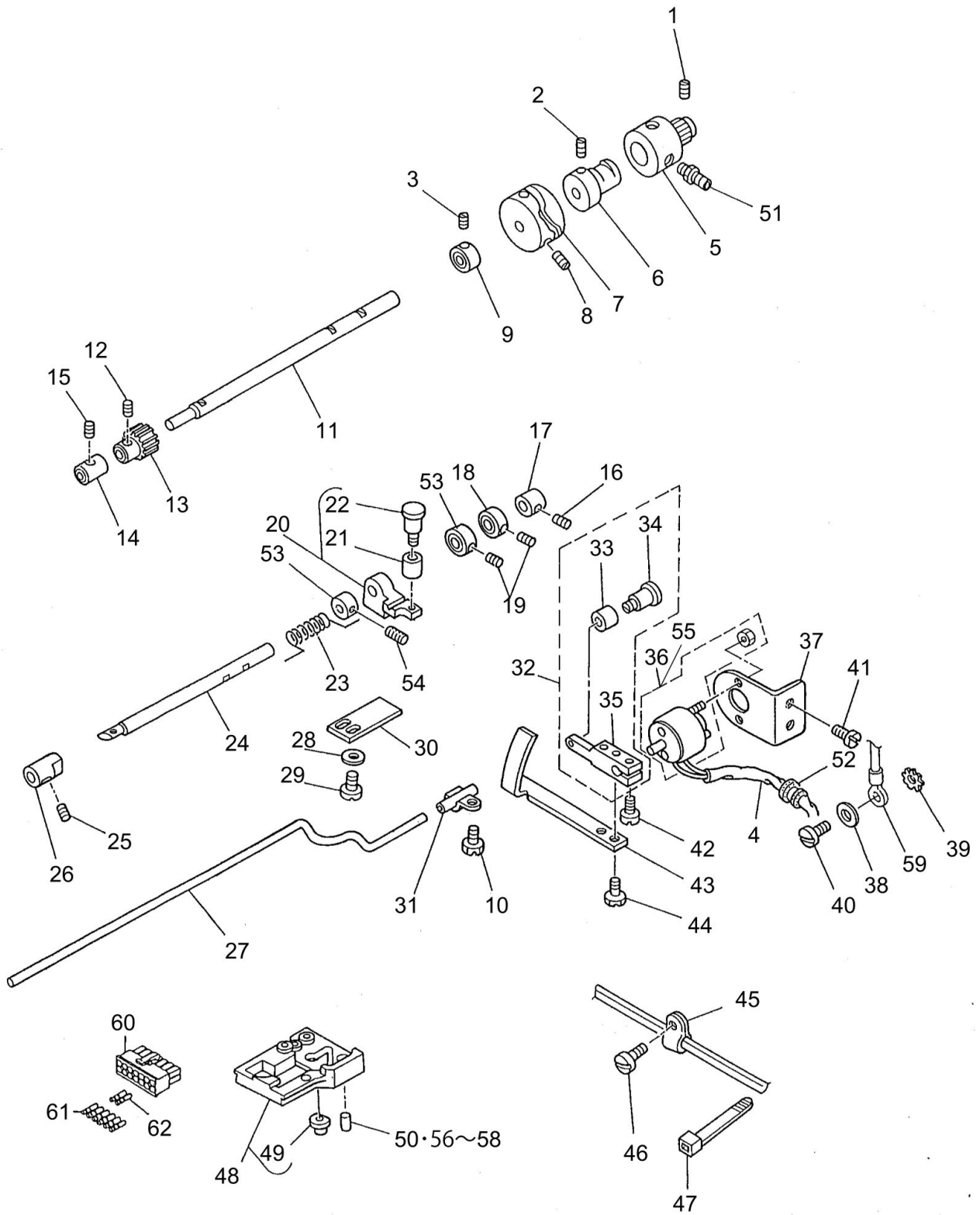
HOOK DRIVING SHAFT COMPONENTS



HOOK DRIVING SHAFT COMPONENTS

| No. | Parts No.    | Parts name          | Remarks            | Level | Cons | Qty |
|-----|--------------|---------------------|--------------------|-------|------|-----|
| 48  | SS6060210SP  | SCREW 3/32-56 L=1.9 |                    |       |      | 1   |
| 49  | B18092450A0  | OIL WICK ASM.       |                    |       |      | 1   |
| 50  | E9862201000  | TUBE                |                    | *     |      | 0.1 |
| 51  | 22916506     | SET SCREW           |                    |       |      | 1   |
| 52  | D1830560EA0  | HOOK ASM.           |                    |       |      | 1   |
| 53  | B9117201000  | BOBBIN              | FOR DSU-145        |       |      | 1   |
| 54  | D1837145E0K  | SPRING              | EXCEPT DSU-145     |       |      | 1   |
| 55  | D1837145EAA  | BOBBIN CASE ASM.    | EXCEPT DSU-145     |       |      | 1   |
| 56  | B1837201SA0  | BOBBIN CASE ASM.    | FOR DSU-145        |       |      | 1   |
| 57  | SS6081210SP  | SCREW 1/8-44 L=12   |                    |       |      | 2   |
| 58  | B183924500C  | THRUST PLATE        | FOR SELECTIVE PART |       |      | 1   |
| 59  | SS2090810SP  | SCREW 9/64-40 L=7.5 |                    |       |      | 2   |
| 60  | D2433245E00  | HINGE SCREW         |                    |       |      | 1   |
| 61  | D9117141E00  | BOBBIN              | EXCEPT DSU-145     |       |      | 1   |
| 62  | B1424158000  | HINGE SCREW         |                    |       |      | 1   |
| 63  | RE0700000K0  | E-RING 7            |                    |       |      | 1   |
| 64  | SS6090610SP  | SCREW 9/64-40 L=5.5 |                    |       |      | 2   |
| 65  | 21212600     | SUPPORT PLAT        | FOR SELECTIVE PART |       |      | 1   |
| 66  | 21212709     | SUPPORT PLAT        | FOR SELECTIVE PART |       |      | 1   |
| 67  | 21212808     | SUPPORT PLAT        |                    |       |      | 1   |
| 68  | 21212907     | SUPPORT PLAT        | FOR SELECTIVE PART |       |      | 1   |
| 69  | 21213004     | SUPPORT PLAT        | FOR SELECTIVE PART |       |      | 1   |
| 70  | D1172245E00  | HOOK COVER HOLDER   | EXCEPT DSU-145     |       |      | 1   |
| 71  | B185351200AA | HOOK SHAFT WASHER A | FOR SELECTIVE PART |       |      | 1   |
| 72  | B185351200BA | HOOK SHAFT WASHER B | FOR SELECTIVE PART |       |      | 1   |
| 73  | B185351200D  | HOOK SHAFT WASHER   | FOR SELECTIVE PART |       |      | 1   |
| 74  | B185351200E  | HOOK SHAFT WASHER   | FOR SELECTIVE PART |       |      | 1   |
| 75  | B163214500E  | VERTICAL FEED PIN   | FOR SELECTIVE PART |       |      | 1   |
| 76  | B163214500D  | PIN                 | FOR SELECTIVE PART |       |      | 1   |
| 77  | B163214500B  | VERTICAL FEED PIN   | FOR SELECTIVE PART |       |      | 1   |
| 78  | B163214500A  | PIN                 | FOR SELECTIVE PART |       |      | 1   |

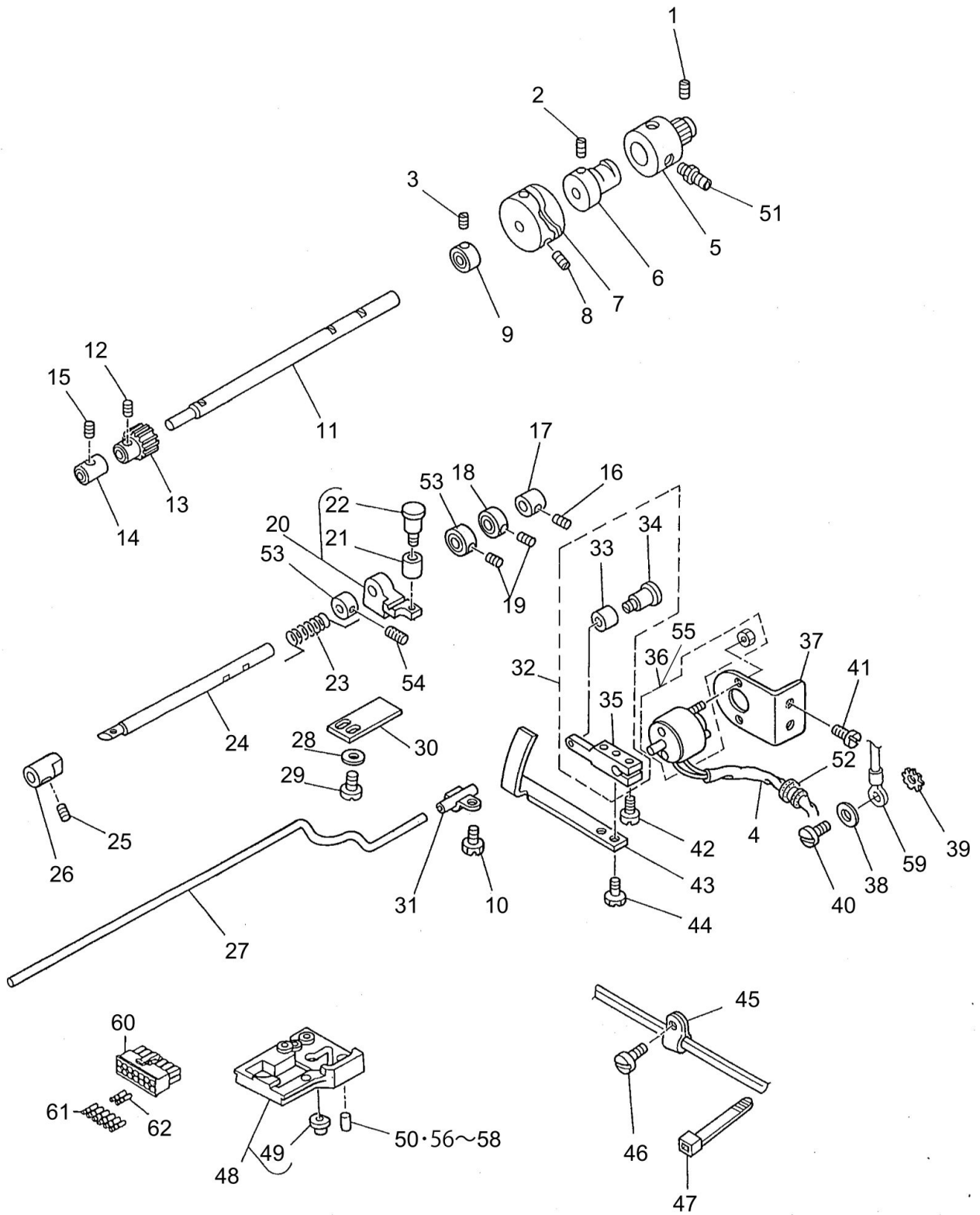
# THREAD TRIMMER COMPONENTS



THREAD TRIMMER COMPONENTS

| No. | Parts No.   | Parts name                     | Remarks                | Level | Cons | Qty |
|-----|-------------|--------------------------------|------------------------|-------|------|-----|
| 1   | SS8151230SP | SCREW 15/64-28 L=12            |                        |       |      | 1   |
| 2   | SM8040602TP | SCREW M4X0.7 L=6               |                        |       |      | 2   |
| 3   | D2434245E00 | SCREW                          |                        |       |      | 2   |
| 4   | D2428141E00 | CORD TUBE 5X0.4                |                        |       |      | 1.2 |
| 5   | D2408245E00 | BUSHING REAR                   |                        |       |      | 1   |
| 6   | D3501245E00 | OIL PUMP SHAFT                 |                        |       |      | 1   |
| 7   | D2403245E00 | THREAD TRIMMER CAM             |                        |       |      | 1   |
| 8   | SS8660612TP | SCREW 1/4-40 L=6               |                        |       |      | 2   |
| 9   | D2432245E00 | THRUST COLLER                  |                        |       |      | 1   |
| 10  | SS7110710SP | SCREW 11/64-40 L=7             |                        |       |      | 1   |
| 11  | D2404245E00 | CAM SHAFT                      |                        |       |      | 1   |
| 12  | SS8660530TP | SCREW 1/4-40 L=4.5             |                        |       |      | 2   |
| 13  | D2405245E00 | CAM SHAFT GEAR                 |                        |       |      | 1   |
| 14  | D2406245E0A | HOOK SHAFT BUSHING FRONT       |                        |       |      | 1   |
| 15  | SS8151230SP | SCREW 15/64-28 L=12            |                        |       |      | 1   |
| 16  | SS8151230SP | SCREW 15/64-28 L=12            |                        |       |      | 1   |
| 17  | D2411245E00 | BUSHING REAR                   |                        |       |      | 1   |
| 18  | D2432245E00 | THRUST COLLER                  |                        |       |      | 1   |
| 19  | D2434245E00 | SCREW                          |                        |       |      | 4   |
| 20  | D2417245EA0 | CAM ROLLER ARM ASM.            |                        |       |      | 1   |
| 21  | B3031141H00 | CONNECTING STUD                |                        | *     |      | 1   |
| 22  | D2423245E00 | CAM ROLLER ARM                 |                        | *     |      | 1   |
| 23  | D2416245E00 | SPRING                         |                        |       |      | 1   |
| 24  | D2409245E00 | DRIVING SHAFT A                |                        |       |      | 1   |
| 25  | SS8151230SP | SCREW 15/64-28 L=12            |                        |       |      | 1   |
| 26  | D2410245E00 | BUSHING FRONT                  |                        |       |      | 1   |
| 27  | D2427145E00 | PICKER DRIVING BAR             |                        |       |      | 1   |
| 28  | SS6090810SP | SCREW 9/64-40 L=7.5            |                        |       |      | 2   |
| 29  | WP0371026SD | WASHER 3.7X7X1                 |                        |       |      | 2   |
| 30  | D2421245E00 | CAM ROLLER ARM HOLDER          |                        |       |      | 1   |
| 31  | D2430245EA0 | PICKER DRIVING BAR HOLDER ASM. |                        |       |      | 1   |
| 32  | D2415245EA0 | SOLENOID ARM ASM.              |                        |       |      | 1   |
| 33  | B3031141H00 | CONNECTING STUD                |                        | *     |      | 1   |
| 34  | D2423245E00 | CAM ROLLER ARM                 |                        | *     |      | 1   |
| 35  | D2415245E00 | SOLENOID ARM                   |                        | *     |      | 1   |
| 36  | D2414245E00 | SOLENOID                       | FOR DSU-145-4/-7(SC-1) |       |      | 1   |
| 37  | D2418245E00 | SOLENOID BASE                  |                        |       |      | 1   |
| 38  | WP0501016SD | WASHER 5X10.5X1                |                        |       |      | 1   |
| 39  | WT0530002KS | TOOTHED WASHER D=5.3           |                        |       |      | 1   |
| 40  | SS7110710SP | SCREW 11/64-40 L=7             |                        |       |      | 1   |
| 41  | SS7110910SP | SCREW 11/64-40 L=8.5           |                        |       |      | 2   |
| 42  | SS7110910SP | SCREW 11/64-40 L=8.5           |                        |       |      | 1   |
| 43  | D2428245E00 | PICKER DRIVING PLATE           |                        |       |      | 1   |
| 44  | SS6090510TP | SCREW 9/64-40 L=5.0            |                        |       |      | 2   |
| 45  | D2120555C00 | CORD PRESSER (120V)            |                        |       |      | 1   |
| 46  | SS7110710SP | SCREW 11/64-40 L=7             |                        |       |      | 1   |
| 47  | GES12153000 | OIL WICK HOLDER                |                        |       |      | 3   |

# THREAD TRIMMER COMPONENTS

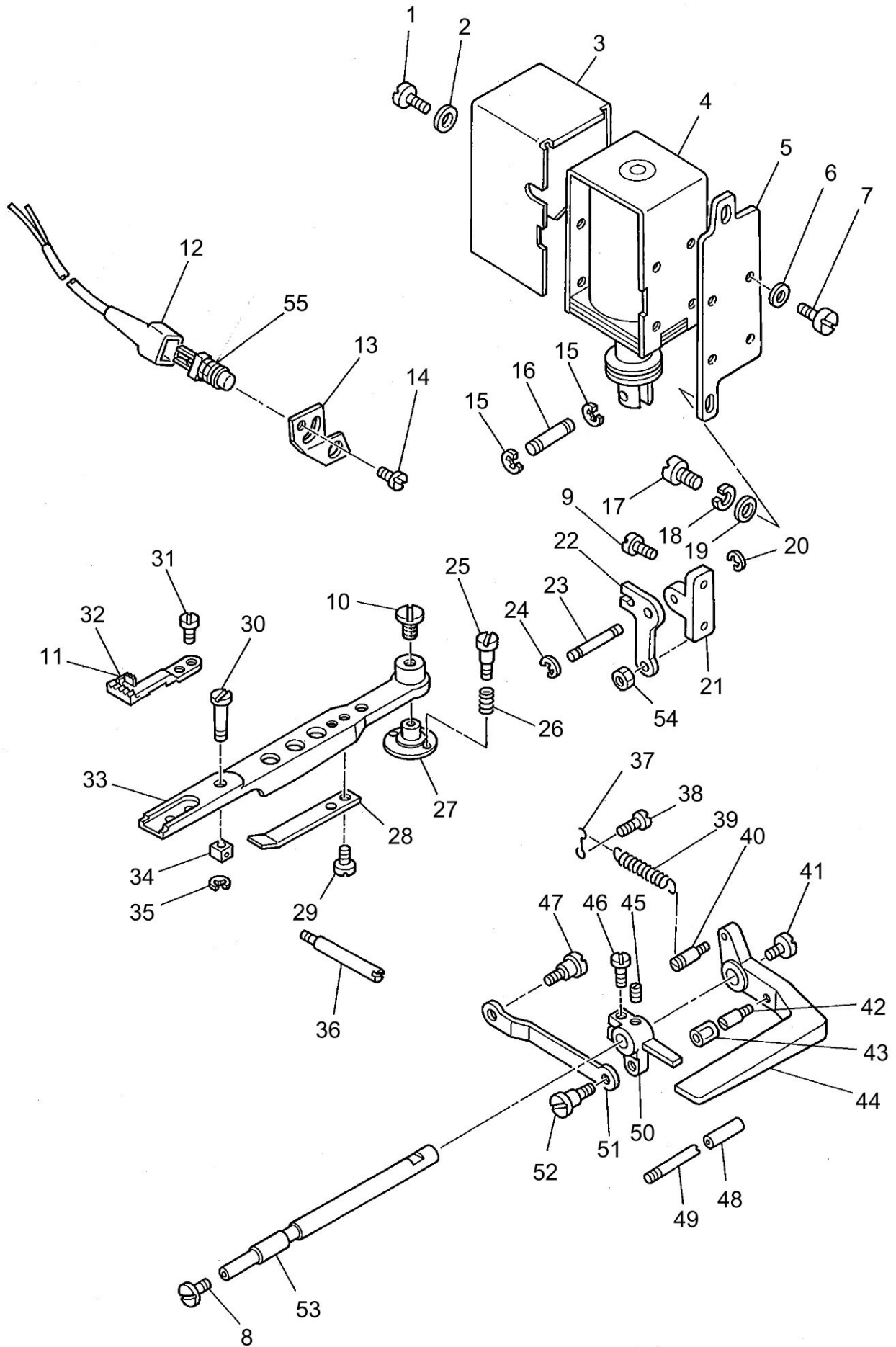


THREAD TRIMMER COMPONENTS

| No. | Parts No.    | Parts name             | Remarks                       | Level | Cons | Qty |
|-----|--------------|------------------------|-------------------------------|-------|------|-----|
| 48  | B16301450A0A | THROAT PLATE BASE ASM. | FOR DSU-145                   |       |      | 1   |
| 49  | B1631245000  | PIN BUSHING            | FOR DSU-145                   | *     |      | 1   |
| 50  | B163214500G  | PIN                    | FOR DSU-145                   |       |      | 1   |
| 51  | SQ1110401MZ  | CONNECTING SCREW       |                               |       |      | 2   |
| 52  | D2414141E00  | LORD BUSHING           |                               |       |      | 1   |
| 53  | D2432245E0A  | THRUST COLLAR A        |                               |       |      | 2   |
| 54  | D2434245E00  | SCREW                  |                               |       |      | 2   |
| 55  | D2414245E0A  | SOLENOID               | FOR DSU-145-7(SC-380)         |       |      | 1   |
| 56  | B163214500J  | PIN                    | SELECTIVE PART<br>FOR DSU-145 |       |      | 1   |
| 57  | B163214500H  | PIN                    | SELECTIVE PART<br>FOR DSU-145 |       |      | 1   |
| 58  | B163214500F  | PIN                    | SELECTIVE PART<br>FOR DSU-145 |       |      | 1   |
| 59  | D6037245GA0  | GROUND WIRE ASM.       | FOR DSU-145-7(SC-1)           |       |      | 1   |
| 60  | HK034610140  | HOUSING 14P            | FOR DSU-145-7                 |       |      | 1   |
| 61  | HK03464000B  | PIN CONTACT            | FOR DSU-145-7-0B              |       |      | 6   |
| 62  | HK03464000B  | PIN CONTACT            | FOR DSU-145-7-00              |       |      | 2   |



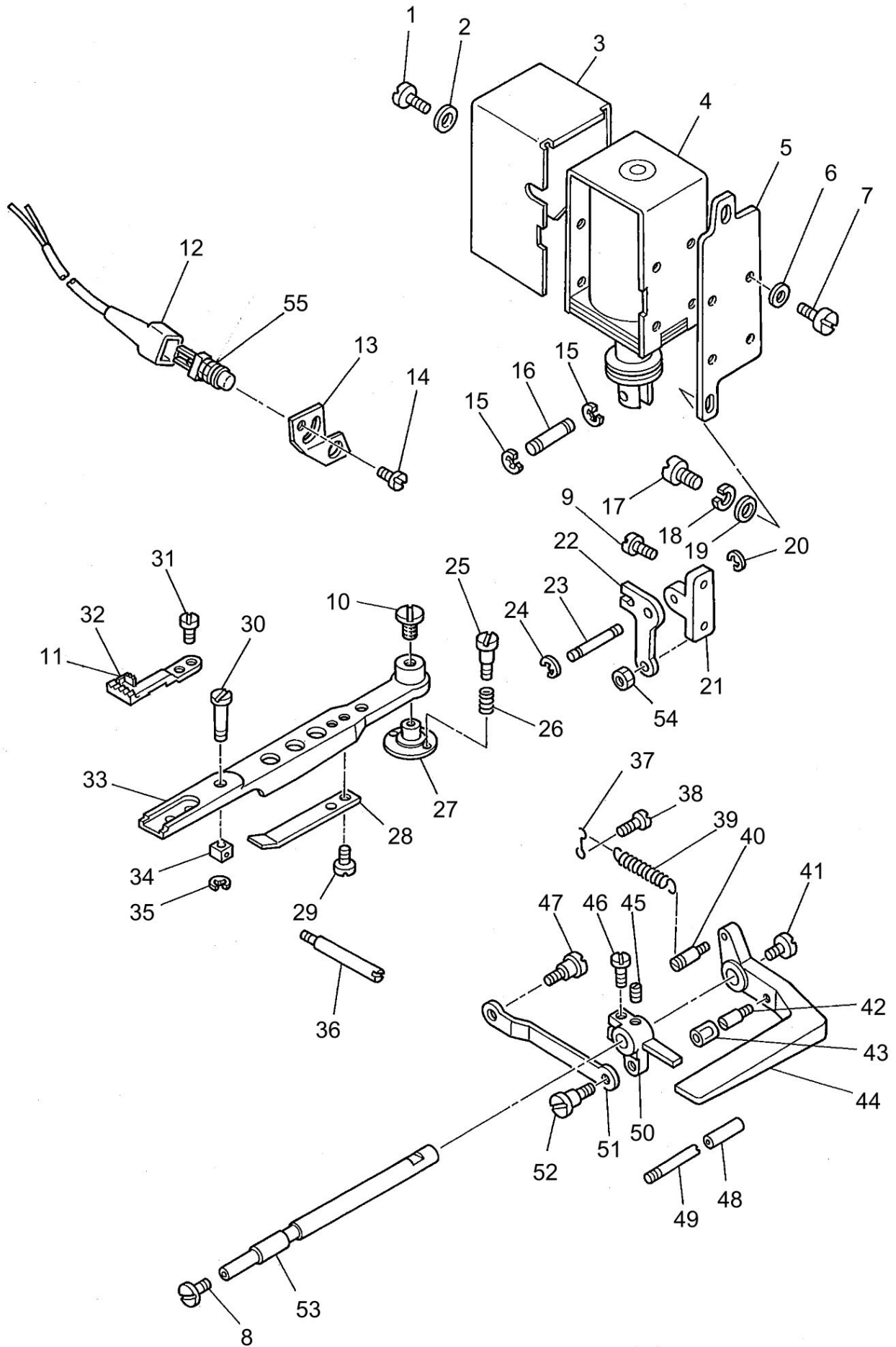
AUTOMATIC REVERSE FEED MECHANISM COMPONENTS



AUTOMATIC REVERSE FEED MECHANISM COMPONENTS

| No. | Parts No.    | Parts name                  | Remarks                | Level | Cons | Qty |
|-----|--------------|-----------------------------|------------------------|-------|------|-----|
| 1   | SS7110710SP  | SCREW 11/64-40 L=7          | FOR DSU-145-4-1B/-7-0B |       |      | 4   |
| 2   | WP0501016SD  | WASHER 5X10.5X1             | FOR DSU-145-4-1B/-7-0B |       |      | 4   |
| 3   | 10161305     | SOLENOID COVER              | FOR DSU-145-4-1B/-7-0B |       |      | 1   |
| 4   | 10119006     | REVERSE FEED SOLENOID AC31V | FOR DSU-145-4-1B/-7-0B |       |      | 1   |
| 5   | 10119204     | SOLENOID INSTALLING PLATE   | FOR DSU-145-4-1B/-7-0B |       |      | 1   |
| 6   | WP0501016SD  | WASHER 5X10.5X1             | FOR DSU-145-4-1B/-7-0B |       |      | 4   |
| 7   | SS9111010SP  | SCREW 11/64-40 L=9.5        | FOR DSU-145-4-1B/-7-0B |       |      | 4   |
| 8   | SS7620750SP  | SCREW 3/16-32 L=6.5         |                        |       |      | 1   |
| 9   | SS7151210SP  | SCREW 15/64-28 L=12         | FOR DSU-145-4-1B/-7-0B |       |      | 2   |
| 10  | B1640145000  | FEED BAR SLIDE SCRER STUD   |                        |       |      | 0.5 |
| 11  | B1613145000  | FEED DOG                    | FOR DSU-145            |       |      | 1   |
| 12  | MAT81126T00  | 2-POLE PLUG COVER           | FOR DSU-145-4-1B/-7-0B |       |      | 1   |
| 13  | D1681141E0A  | PLATE                       | FOR DSU-145-4-1B/-7-0B |       |      | 1   |
| 14  | SS7110710SP  | SCREW 11/64-40 L=7          | FOR DSU-145-4-1B/-7-0B |       |      | 2   |
| 15  | RE0400000K0  | E-RING 4                    | FOR DSU-145-4-1B/-7-0B |       |      | 2   |
| 16  | D2464555B00  | LINK DRIVING MAGNET PIN     | FOR DSU-145-4-1B/-7-0B |       |      | 1   |
| 17  | SS7151210SP  | SCREW 15/64-28 L=12         | FOR DSU-145-4-1B/-7-0B |       |      | 2   |
| 18  | WS0631510KP  | SPRING WASHER               | FOR DSU-145-4-1B/-7-0B |       |      | 2   |
| 19  | WP0621016SD  | WASHER 6.2X13X1             | FOR DSU-145-4-1B/-7-0B |       |      | 2   |
| 20  | RE0600000K0  | E-RING 6                    | FOR DSU-145-4-1B/-7-0B |       |      | 1   |
| 21  | D1684141E00A | LINK INSTALLING BASE        | FOR DSU-145-4-1B/-7-0B |       |      | 1   |
| 22  | 10119402     | LINK                        | FOR DSU-145-4-1B/-7-0B |       |      | 1   |
| 23  | D1687141E00  | PIN                         | FOR DSU-145-4-1B/-7-0B |       |      | 1   |
| 24  | RE0600000K0  | E-RING 6                    | FOR DSU-145-4-1B/-7-0B |       |      | 1   |
| 25  | B1641245000  | HINGE SCREW                 |                        |       |      | 2   |
| 26  | B1642245000  | SPRING                      |                        |       |      | 2   |
| 27  | B1639145000  | FEED BAR STUD               |                        |       |      | 1   |
| 28  | B1633245000  | SPRING                      |                        |       |      | 1   |
| 29  | SS7080520SP  | SCREW 1/8-44 L=4.9          |                        |       |      | 2   |
| 30  | B1645245000  | FEED BAR SLIDE SCREW STUD   |                        |       |      | 1   |
| 31  | B1652245000  | SCREW                       |                        |       |      | 2   |
| 32  | D1613145E00  | FEED DOG                    |                        |       |      | 1   |
| 33  | B1606145000  | FEED BAR                    |                        |       |      | 1   |
| 34  | B1644245000  | FEED BAR SLIDE BLOCK B      |                        |       |      | 1   |
| 35  | RE0300000K0  | E-RING 3                    |                        |       |      | 1   |
| 36  | B1638245000  | SCREW STUD                  |                        |       |      | 1   |
| 37  | D1682141E00  | SUSPENSION HOOK B           | FOR DSU-145-4-1B/-7-0B |       |      | 1   |
| 38  | SS7090710SP  | SCREW 9/64-40 L=6.8         | FOR DSU-145-4-1B/-7-0B |       |      | 1   |
| 39  | D1685141E00  | LEVER SPRING                | FOR DSU-145-4-1B/-7-0B |       |      | 1   |
| 40  | 10120004     | SPRING SUSPENSION           | FOR DSU-145-4-1B/-7-0B |       |      | 1   |
| 41  | SS7620750SP  | SCREW 3/16-32 L=6.5         |                        |       |      | 1   |
| 42  | B1114280000  | PIN                         | FOR DSU-145-4-1B/-7-0B |       |      | 1   |
| 43  | 10119907     | CUSHION                     | FOR DSU-145-4-1B/-7-0B |       |      | 1   |
| 44  | D1624141E0A  | REVERSE FEED CONTROL LEVER  | FOR DSU-145-4-1B/-7-0B |       |      | 1   |
| 45  | SS8150510TP  | SCREW 15/64-28 L=4.7        | FOR DSU-145-4-1B/-7-0B |       |      | 1   |
| 46  | SS7121410TP  | SCREW 3/16-28 L=14          | FOR DSU-145-4-1B/-7-0B |       |      | 1   |
| 47  | SD0720331SP  | HINGE SCREW D=7.24 H=3.3    | FOR DSU-145-4-1B/-7-0B |       |      | 1   |

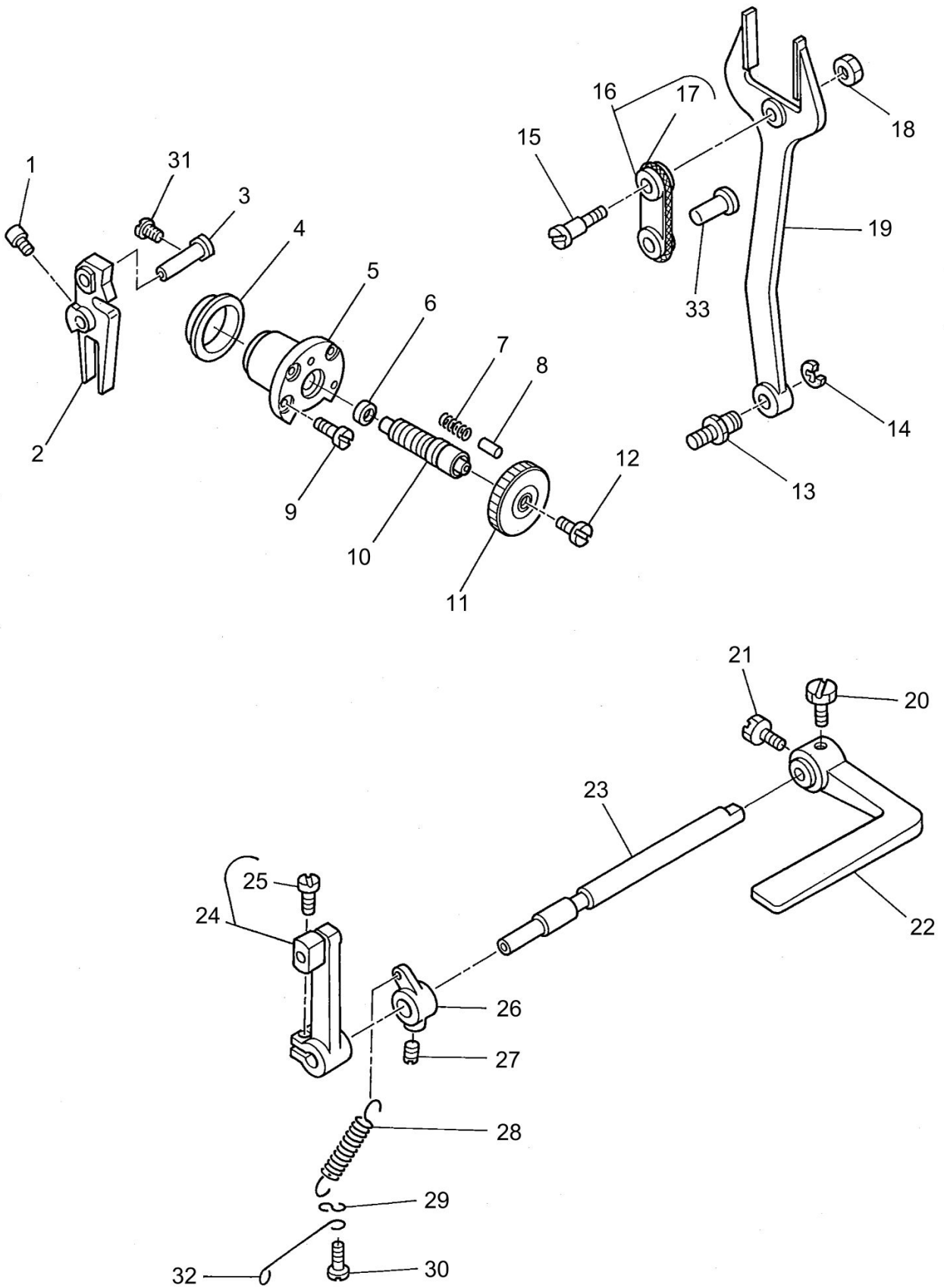
AUTOMATIC REVERSE FEED MECHANISM COMPONENTS



AUTOMATIC REVERSE FEED MECHANISM COMPONENTS

| No. | Parts No.   | Parts name               | Remarks                | Level | Cons | Qty |
|-----|-------------|--------------------------|------------------------|-------|------|-----|
| 48  | BP300000000 | VINYL PIPE               | FOR DSU-145-4-1B/-7-0B |       |      | 0.1 |
| 49  | B2733761000 | PIN                      | FOR DSU-145-4-1B/-7-0B |       |      | 1   |
| 50  | D1683141E00 | CONNECTING ARM           | FOR DSU-145-4-1B/-7-0B |       |      | 1   |
| 51  | D1686141E00 | REVERSE FEED ROD         | FOR DSU-145-4-1B/-7-0B |       |      | 1   |
| 52  | SD0720331SP | HINGE SCREW D=7.24 H=3.3 | FOR DSU-145-4-1B/-7-0B |       |      | 1   |
| 53  | D1621141E00 | LEVER SHAFT              | FOR DSU-145-4-1B/-7-0B |       |      | 1   |
| 54  | NS6150430SP | NUT 15/64-28             | FOR DSU-145-4-1B/-7-0B |       |      | 1   |
| 55  | D1680141EA0 | TOUCH BUCK SWITCH ASM.   | FOR DSU-145-4-1B/-7-0B |       |      | 1   |

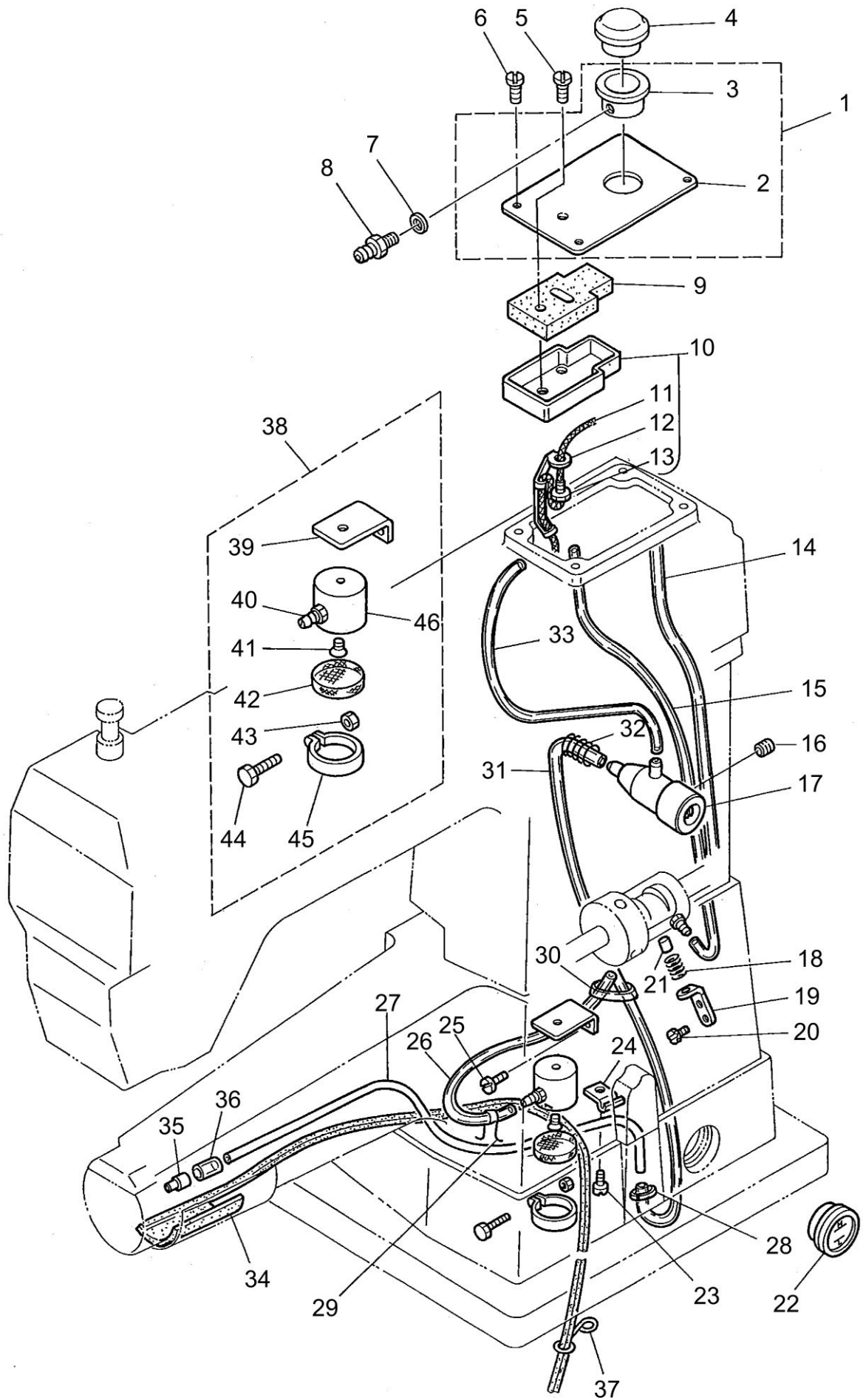
REVERSE FEED MACHANISM LEVER COMPONENTS



REVERSE FEED MACHANISM LEVER COMPONENTS

| No. | Parts No.    | Parts name                     | Remarks                | Level | Cons | Qty |
|-----|--------------|--------------------------------|------------------------|-------|------|-----|
| 1   | SS6661110SP  | SCREW 1/4-40 L=11              |                        |       |      | 1   |
| 2   | B1620145000  | FEED REGULATOR                 |                        |       |      | 1   |
| 3   | B1622141H00  | HINGE PIN                      |                        |       |      | 1   |
| 4   | B1637141H00  | ECCENTRIC BUSHING              |                        |       |      | 1   |
| 5   | B1636141H0A  | FEED CONTROL SCREW METAL       |                        |       |      | 1   |
| 6   | RO074240100  | RUBBER RING                    |                        |       |      | 1   |
| 7   | B1148141H00  | SPRING                         |                        |       |      | 1   |
| 8   | B1147141H00  | PIN                            |                        |       |      | 1   |
| 9   | B1638141H00  | SCREW                          |                        |       |      | 4   |
| 10  | B1634141H00A | STITCH LENGTH REGULATING SCREW |                        |       |      | 1   |
| 11  | B16231450A0  | STITCH DIAL                    |                        |       |      | 1   |
| 12  | SS6121050SP  | SCREW 3/16-28 L=9.5            |                        |       |      | 1   |
| 13  | B1424158000  | HINGE SCREW                    |                        |       |      | 1   |
| 14  | RE0700000K0  | E-RING 7                       |                        |       |      | 1   |
| 15  | SD0950802SH  | HINGE SCREW D=9.53 H=8         |                        |       |      | 1   |
| 16  | B16191150A0  | REGULATOR CONNECTING LINK ASM. |                        |       |      | 1   |
| 17  | CQ200000000  | OIL WICK                       |                        | *     |      | 0.1 |
| 18  | NS6680410SP  | NUT 9/32-28                    |                        |       |      | 1   |
| 19  | B1614145000  | PITMAN                         |                        |       |      | 1   |
| 20  | SS9660910SP  | SCREW 1/4-40 L=9.4             | FOR DSU-145/-4-1/-7-00 |       |      | 1   |
| 21  | SS9660720SP  | SCREW 1/4-40 L=7               | FOR DSU-145/-4-1/-7-00 |       |      | 1   |
| 22  | B1624141H0A  | FEED LEVER                     | FOR DSU-145/-4-1/-7-00 |       |      | 1   |
| 23  | B1621141H00A | CONTROL LEVER SHAFT            | FOR DSU-145/-4-1/-7-00 |       |      | 1   |
| 24  | B16272260B0  | CONTROL LEVER CRANK ASM.       |                        |       |      | 1   |
| 25  | SS6121210SP  | SCREW 3/16-28 L=12             |                        | *     |      | 1   |
| 26  | B1647226000  | SUSPENSION BRACKET (A)         |                        |       |      | 1   |
| 27  | SS8150710SP  | SCREW 15/64-28 L=7             |                        |       |      | 1   |
| 28  | B1646201000  | TENSION SPRING                 |                        |       |      | 1   |
| 29  | B1648122000  | SUSPENSION HOOK (B)            |                        |       |      | 1   |
| 30  | SS7091110SP  | SCREW 9/64-40 L=10.5           |                        |       |      | 1   |
| 31  | SS6151220SP  | SCREW 15/64-28 L=11.5          |                        |       |      | 1   |
| 32  | B3537201000  | OIL FELT HOLDER                |                        |       |      | 1   |
| 33  | B1618226000  | HINGE PIN                      |                        |       |      | 1   |

LUBRICATION COMPONENTS



LUBRICATION COMPONENTS

| No. | Parts No.   | Parts name               | Remarks | Level | Cons | Qty |
|-----|-------------|--------------------------|---------|-------|------|-----|
| 1   | B11501450AA | TOP COVER ASM.           |         |       |      | 1   |
| 2   | B1150145000 | TOP COVER                |         | *     |      | 1   |
| 3   | B3505145000 | OIL SIGH WINDOW BASE     |         | *     |      | 1   |
| 4   | B3520586000 | OIL SIGHT WINDOW         |         |       |      | 1   |
| 5   | SS7112420SP | SCREW 11/64-40 L=24      |         |       |      | 1   |
| 6   | SS7110710SP | SCREW 11/64-40 L=7       |         |       |      | 2   |
| 7   | B3534012000 | GASKET                   |         |       |      | 1   |
| 8   | SQ1110401MZ | CONNECTING SCREW         |         |       |      | 3   |
| 9   | B3504201000 | OIL FELT                 |         |       |      | 1   |
| 10  | B35031450A0 | OIL RESERVOIR ASM.       |         |       |      | 1   |
| 11  | CQ202000000 | OIL WICK                 |         | *     |      | 0.3 |
| 12  | B3527012000 | HOLDER                   |         | *     |      | 1   |
| 13  | B3515201000 | CLAMP SLEEVE NUT         |         | *     |      | 1   |
| 14  | BT0500300EA | OIL TUBE                 |         |       |      | 0.3 |
| 15  | BT0500300EA | OIL TUBE                 |         |       |      | 0.4 |
| 16  | SS8150710SP | SCREW 15/64-28 L=7       |         |       |      | 1   |
| 17  | D3513245EA0 | OIL ADJUSTING ASM.       |         |       |      | 1   |
| 18  | B1214038000 | PLUNGER SPRING           |         |       |      | 1   |
| 19  | D3502245E00 | PLUNGER HOLDER           |         |       |      | 1   |
| 20  | SS9111010SP | SCREW 11/64-40 L=9.5     |         |       |      | 2   |
| 21  | B3534155000 | PLUNGER                  |         |       |      | 1   |
| 22  | B3506245000 | OIL WINDOW               |         |       |      | 1   |
| 23  | SS7110710SP | SCREW 11/64-40 L=7       |         |       |      | 1   |
| 24  | D3916481C00 | TUBE HOLDER              |         |       |      | 1   |
| 25  | SS7111310SP | SCREW 11/64-40 L=12.8    |         |       |      | 1   |
| 26  | BT0500300EA | OIL TUBE                 |         |       |      | 0.2 |
| 27  | B3523245000 | OIL TUBE                 |         |       |      | 1   |
| 28  | GES12153000 | OIL WICK HOLDER          |         |       |      | 1   |
| 29  | 10126803    | OIL TUBE HOLDER          |         |       |      | 1   |
| 30  | GES12153000 | OIL WICK HOLDER          |         |       |      | 1   |
| 31  | BT0500300EA | OIL TUBE                 |         |       |      | 0.2 |
| 32  | B3520245000 | SPRING                   |         |       |      | 1   |
| 33  | BT0500300EA | OIL TUBE                 |         |       |      | 0.3 |
| 34  | B35272450A0 | CYLINDER COVER FELT ASM. |         |       |      | 1   |
| 35  | B3525245000 | JOINT                    |         |       |      | 1   |
| 36  | BT0400251EC | TUBE HOSE YELLOW         |         |       |      | 0.1 |
| 37  | B3537201000 | OIL FELT HOLDER          |         |       |      | 1   |
| 38  | B35112460A0 | SUCTION ASM.             |         |       |      | 1   |
| 39  | B3512246000 | SUCTION SET PLATE        |         | *     |      | 1   |
| 40  | SQ1150451MZ | CONNECTING SCREW         |         | *     |      | 1   |
| 41  | SS2110930SP | SCREW 11/64-40 L=8.7     |         | *     |      | 1   |
| 42  | B1851512000 | FILTER SCREEN            |         | *     |      | 1   |
| 43  | NS6090310SP | NUT 9/64-40              |         | *     |      | 1   |
| 44  | SS7090910SP | SCREW 9/64-40 L=8.5      |         | *     |      | 1   |
| 45  | B1850512000 | BUSHING HOLDER           |         | *     |      | 1   |
| 46  | 10126324    | SUCTION                  |         | *     |      | 1   |



TABLE & KNEE LIFFTER COMPONENTS

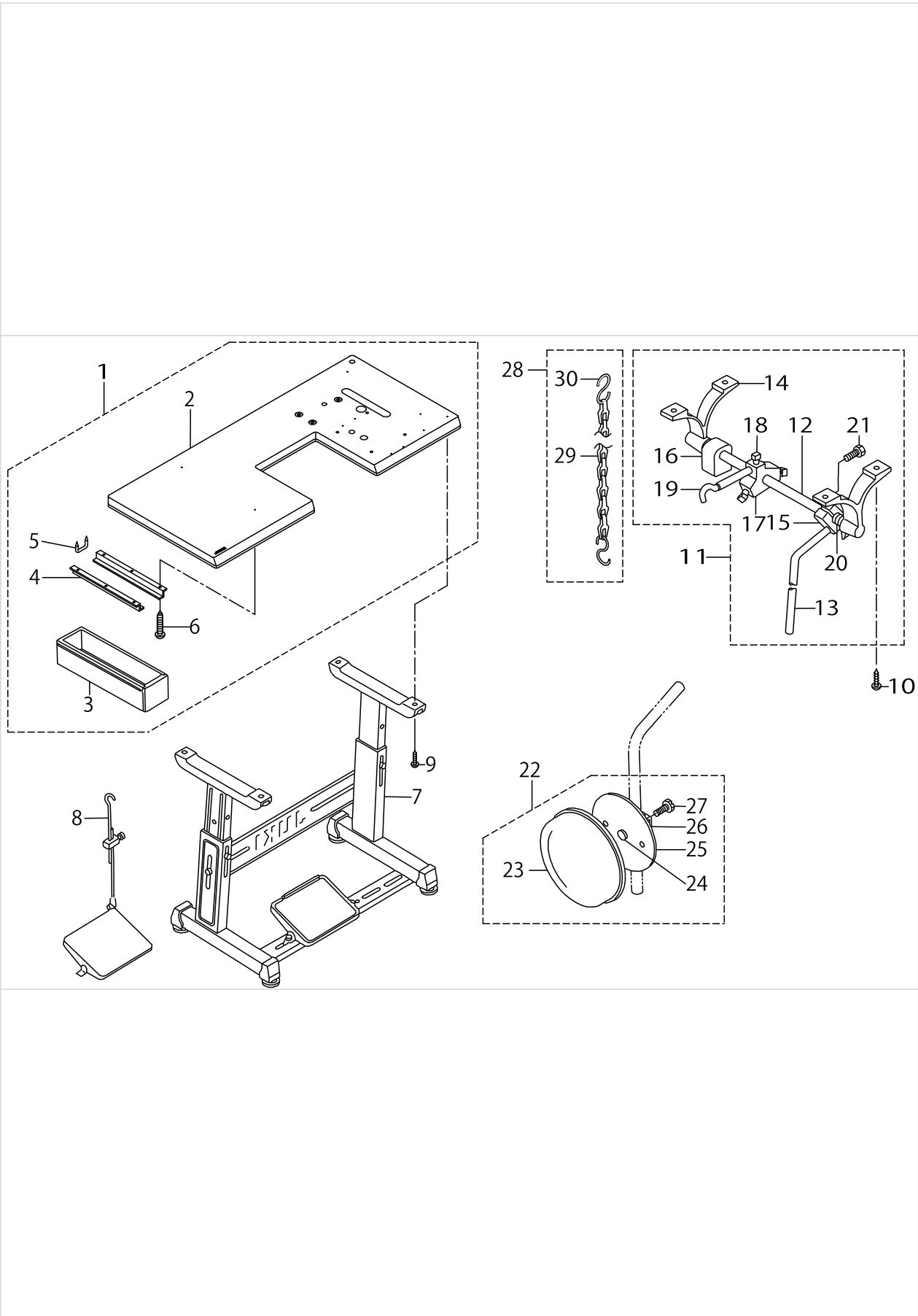
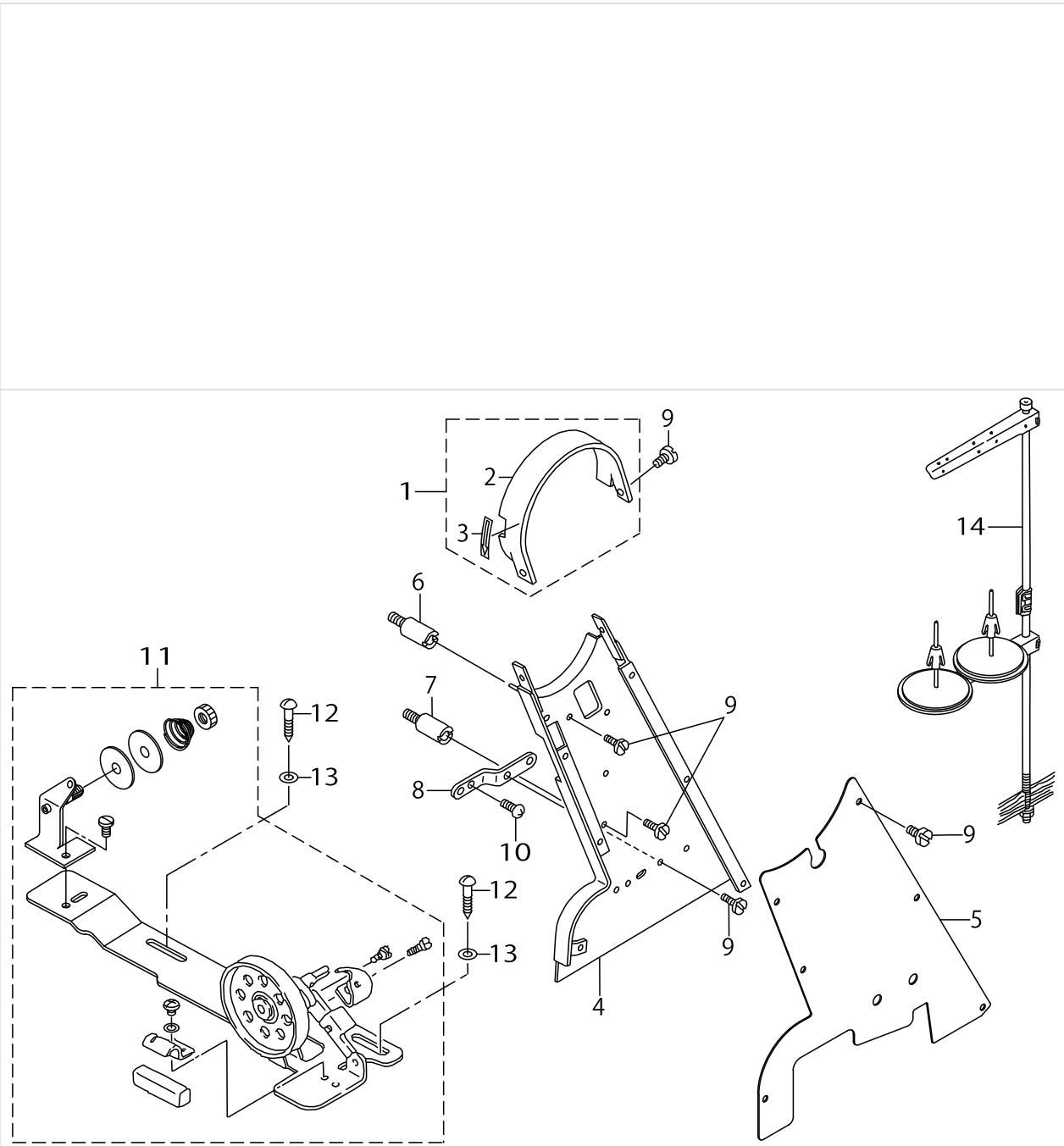


TABLE & KNEE LIFFTER COMPONENTS

| No. | Parts No.    | Parts name                 | Remarks     | Level | Cons | Qty |
|-----|--------------|----------------------------|-------------|-------|------|-----|
| 1   | D8201145GA0  | TABLE ASM.                 |             |       |      | 1   |
| 2   | D8201145G00  | TABLE                      |             | *     |      | 1   |
| 3   | 11155108     | DRAWER                     |             | *     |      | 1   |
| 4   | 11155207     | DRAWER SUPPORT             |             | *     |      | 2   |
| 5   | D8204555D00  | DRAWER STOPPER             |             | *     |      | 1   |
| 6   | SK3311600SE  | WOOD SCREW D=3.1 L=16      |             | *     |      | 6   |
| 7   | 11157567     | T LEG JUNCTION             |             |       |      | 1   |
| 8   | B71140120A0  | MOTOR CONNECTING ROD ASM.  | FOR DSU-145 |       |      | 1   |
| 9   | SK3513200SC  | WOOD SCREW D=5.1 L=32      |             |       |      | 4   |
| 10  | SK1483201SE  | WOOD SCREW D=4.8 L=32      |             |       |      | 4   |
| 11  | B34202450A0  | KNEE LIFFTER ASM.          |             |       |      | 1   |
| 12  | B3420245000  | MAIN SHAFT                 |             | *     |      | 1   |
| 13  | B3422245000  | KNEE LIFFTER PLATE ROD     |             | *     |      | 1   |
| 14  | B3423245000  | KNEE PRESS ROD HOLDER      |             | *     |      | 2   |
| 15  | B3433141H0A  | BRACKET                    |             | *     |      | 1   |
| 16  | B3434141H00  | BRACKET                    |             | *     |      | 1   |
| 17  | B3424141H00  | MOUNTING BRACKET           |             | *     |      | 1   |
| 18  | B3425141H00  | MOUNTING BRACKET SET SCREW |             | *     |      | 3   |
| 19  | B3424245000  | KNEE LIFFTER PLATE ARM     |             | *     |      | 1   |
| 20  | B3425245000A | SPRING                     |             | *     |      | 1   |
| 21  | SS9182010SN  | SCREW 9/32-20 L=20         |             | *     |      | 2   |
| 22  | B34262450A0  | KNEE PRESS PLATE ASM.      |             |       |      | 1   |
| 23  | 22934509     | KNEE PAD PLATE COVER       |             | *     |      | 1   |
| 24  | 22934400     | KNEE PAD PLATE RUBBER      |             | *     |      | 1   |
| 25  | 22934202     | KNEE PAD PLATE             |             | *     |      | 1   |
| 26  | 22934301     | KNEE PAD PLATE SUPPORT     |             | *     |      | 1   |
| 27  | SM9061203SE  | SCREW M6 L=12              |             | *     |      | 1   |
| 28  | B34212450A0  | CHAIN ASM.                 |             |       |      | 1   |
| 29  | B3421245000  | CHAIN                      |             | *     |      | 1   |
| 30  | 13160304     | S SHAPED HOOK              |             | *     |      | 2   |

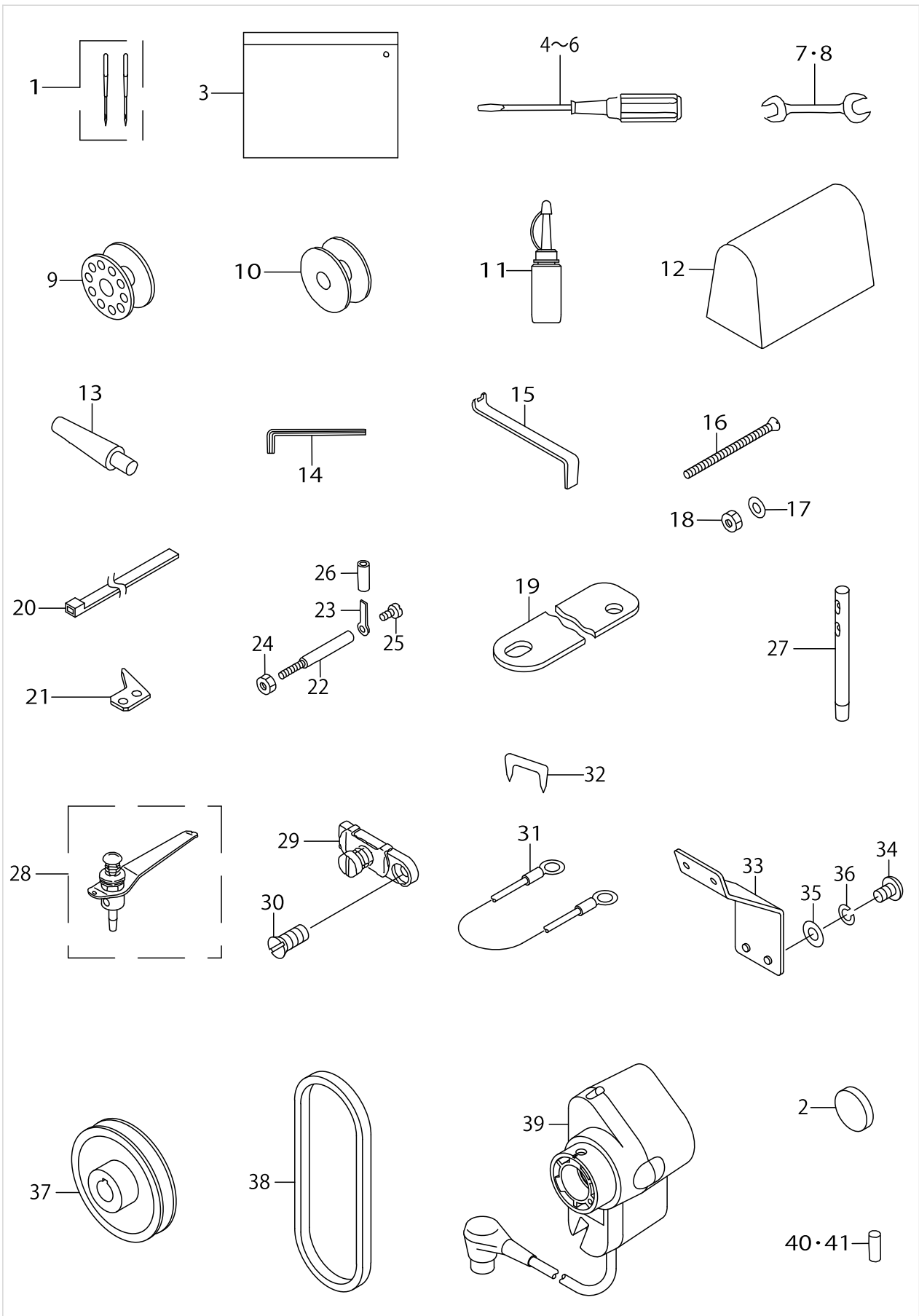
THREAD WINDER & BELT COVER & THREAD STAND COMPONENTS



THREAD WINDER & BELT COVER & THREAD STAND COMPONENTS

| No. | Parts No.   | Parts name                | Remarks | Level | Cons | Qty |
|-----|-------------|---------------------------|---------|-------|------|-----|
| 1   | B91011450AA | TOP COVER (WITH LABEL)    |         |       |      | 1   |
| 2   | B910114500A | TOP COVER                 |         | *     |      | 1   |
| 3   | CM500300001 | DIRECTION LABEL           |         | *     |      | 1   |
| 4   | B91021450AA | BELT COVER COMPL.         |         |       |      | 1   |
| 5   | 21286901    | BELT COVER                |         |       |      | 1   |
| 6   | B9106145000 | BELT COVER SUPPORT STUD A |         |       |      | 1   |
| 7   | B9107145000 | BELT COVER SUPPORT STUD B |         |       |      | 1   |
| 8   | B9108145000 | BELT COVER SUPPORT PLATE  |         |       |      | 1   |
| 9   | SS6110480SP | SCREW 11/64-40 L=4.3      |         |       |      | 12  |
| 10  | SS7151210SP | SCREW 15/64-28 L=12       |         |       |      | 2   |
| 11  | 11415866    | BOBBIN WINDER COMPL.      |         |       |      | 1   |
| 12  | SK3482500SC | WOOD SCREW D=4.8 L=25     |         |       |      | 2   |
| 13  | WP0501016SC | WASHER 5X10.5X1           |         |       |      | 2   |
| 14  | 22930358    | THREAD STAND ASM.         |         |       |      | 1   |

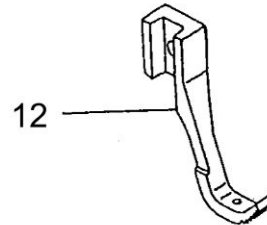
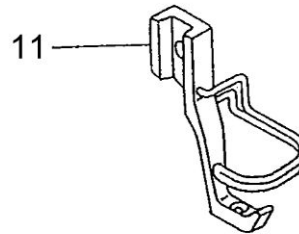
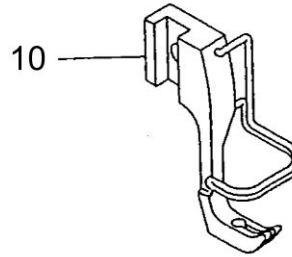
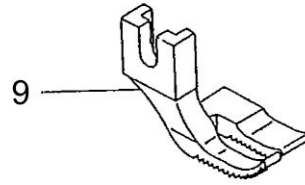
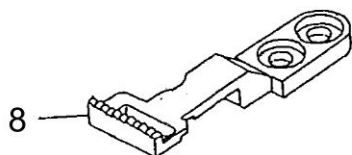
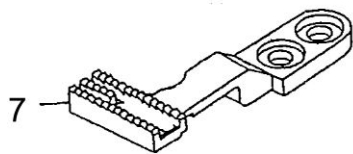
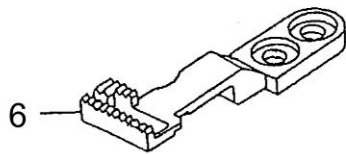
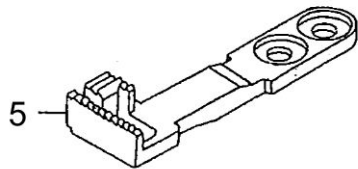
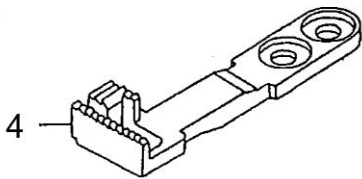
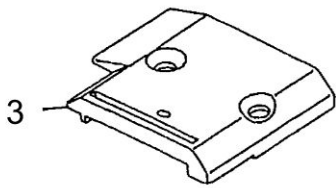
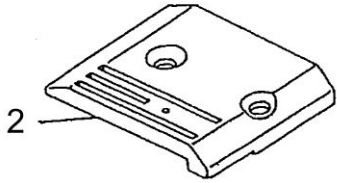
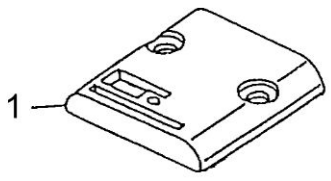
ACCESSORIES PARTS COMPONENTS



ACCESSORIES PARTS COMPONENTS

| No. | Parts No.   | Parts name                   | Remarks               | Level | Cons | Qty |
|-----|-------------|------------------------------|-----------------------|-------|------|-----|
| 1   | MDP170B2102 | NEEDLE DPX17#21-2            |                       |       |      | 1   |
| 2   | B8228125000 | OIL RESERVOIR MAGNET         |                       |       |      | 1   |
| 3   | B9101552000 | ACCESSORY BOX                |                       |       |      | 1   |
| 4   | 22933006    | SCREW DRIVERN LARGE          |                       |       |      | 1   |
| 5   | B9110012000 | SCREW DRIVER MIDDLE          |                       |       |      | 1   |
| 6   | B9111012000 | SCREW DRIVER SMALL           |                       |       |      | 1   |
| 7   | B9112012000 | WRENCH (11X14)               |                       |       |      | 1   |
| 8   | B9113012000 | WRENCH (9X10)                |                       |       |      | 1   |
| 9   | B9117201000 | BOBBIN                       |                       |       |      | 1   |
| 10  | D9117141E00 | BOBBIN                       | FOR DSU-145           |       |      | 1   |
| 11  | B91210120A0 | OILER ASM.                   |                       |       |      | 1   |
| 12  | 22933303    | VINYL COVER                  |                       |       |      | 1   |
| 13  | B820424500A | FRAME SUPPORT BAR            |                       |       |      | 1   |
| 14  | J106600000F | HEXAGONAL WRENCH KEY         |                       |       |      | 1   |
| 15  | B9111245000 | WRENCH                       |                       |       |      | 1   |
| 16  | B9130245000 | BOLT                         |                       |       |      | 4   |
| 17  | WP0751576SD | WASHER 7.5X19X1.5            |                       |       |      | 4   |
| 18  | NM6060001SD | NUT M6                       |                       |       |      | 4   |
| 19  | B9110245000 | RUBBER PACKING               |                       |       |      | 2   |
| 20  | GES12153000 | OIL WICK HOLDER              |                       |       |      | 1   |
| 21  | D2402245E00 | COUNTER KNIFE                | FOR DSU-145-4/-7      |       |      | 1   |
| 22  | D7101245E00 | SYNCHRONIZER HOLDER STUD     | FOR DSU-145-4/-7      |       |      | 1   |
| 23  | D7102245E00 | SYNCHRONZER HOLDER PLATE     | FOR DSU-145-4/-7      |       |      | 1   |
| 24  | NS6150430SP | NUT 15/64-28                 | FOR DSU-145-4/-7      |       |      | 1   |
| 25  | SS7110710SP | SCREW 11/64-40 L=7           | FOR DSU-145-4/-7      |       |      | 1   |
| 26  | BT0630520Z0 | HOLDER COVER                 | FOR DSU-145-4/-7      |       |      | 1   |
| 27  | D1113126WA0 | NEEDLE THREAD GUIDE PIN ASM. | FOR DSU-145/-4        |       |      | 1   |
| 28  | 10549657    | THRAED GUIDE ASM.            | FOR DSU-145-7         |       |      | 1   |
| 29  | D1129141EA0 | ARM THREAD GUIDE BOTTOM ASM. |                       |       |      | 1   |
| 30  | SS2090710TP | SCREW 9/64-40 L=7.2          |                       |       |      | 1   |
| 31  | 10741759    | GROUND WIRE ASM.             | FOR DSU-145-4/-7(JUS) |       |      | 1   |
| 32  | MAO11532000 | CORD STAPLE                  | FOR DSU-145-4         |       |      | 2   |
| 33  | D1114245F00 | PANEL THREAD GUIDE           | FOR DSU-145-7         |       |      | 1   |
| 34  | SM4040601SC | SCREW M4X0.7 L=6             | FOR DSU-145-7         |       |      | 1   |
| 35  | WP0430800SC | WASHER M4                    | FOR DSU-145-7         |       |      | 1   |
| 36  | WS0410002KN | SPRING WASHER                | FOR DSU-145-7         |       |      | 1   |
| 37  | MTSP00750B0 | MOTOR PULLEY ASM. P.C.D 75   | FOR DSU-145-7         |       |      | 1   |
| 38  | MTJVM00520A | V BELT                       | FOR DSU-145-7         |       |      | 1   |
| 39  | 40026920    | SYNCHRONIZER ASM             | FOR DSU-145-7         |       |      | 1   |
| 40  | B163214500E | VERTICAL FEED PIN            | FOR DSU-145-4/-7      |       |      | 1   |
| 41  | B163214500J | PIN                          | FOR DSU-145           |       |      | 1   |

GAUGE COMPONENTS



GAUGE COMPONENTS

| No. | Parts No.   | Parts name        | Remarks                                      | Level | Cons | Qty |
|-----|-------------|-------------------|--|-------|------|-----|
| 1   | B110514500B | THROAT PLATE      | FOR DSU-145                                  |       |      | 1   |
| 2   | D1105145E0B | THROAT PLATE      | FOR DSU-145-4/-7 (WITH USE OF D1613-145-E0B) |       |      | 1   |
| 3   | D1105145E0T | THROAT PLATE      | FOR DSU-145-4/-7                             |       |      | 1   |
| 4   | B161314500A | FEED DOG          | FOR DSU-145                                  |       |      | 1   |
| 5   | B161314500B | FEED DOG          | FOR DSU-145                                  |       |      | 1   |
| 6   | D1613145E0A | FEED DOG          | FOR DSU-145-4/-7                             |       |      | 1   |
| 7   | D1613145E0B | FEED DOG          | FOR DSU-145-4/-7 (WITH USE OF D1105-145-E0B) |       |      | 1   |
| 8   | D1613145E0T | FEED DOG          | FOR DSU-145-4/-7                             |       |      | 1   |
| 9   | B152614500A | PRESSURE FOOT     | WITH USE OF B1525-145-00A                    |       |      | 1   |
| 10  | D1525141EAA | PRESSER FOOT ASM. |  |       |      | 1   |
| 11  | B15251450AT | PRESSER FOOT ASM. |  |       |      | 1   |
| 12  | B152514500A | PRESSURE FOOT     | WITH USE OF B1526-145-00A                    |       |      | 1   |



## HOW TO MAKE USE OF THIS PARTS LIST

1.As to "#01" and "#02" refer to the "Note" given at the bottom of the respective pages.

2.Codes on the "Qty" column

- Each numeral indicates the number of parts required.
- "0.1" and "2.5" indicate the length (in meters) of the respective parts.

3.Parentheses mean that the corresponding part is a subpart that constructs an assembly part.

4.Dotted lines on the Figures indicate assembly parts.

1. リストページの# 0 1、# 0 2の印は、ページ下の"注記"の説明を参照下さい。
2. 数量欄の数字は、個数を表し、0. 1、2. 5等の数値は、長さ（単位メートル）を表します。
3. 数量欄の（ ）は、組部品を構成している子部品であることを意味します。
4. イラストページの-----枠は、組構成であることを意味します。

Illustration of this parts list is based on the model DSU-145-4-1B.

このパーツリストは、DSU-145-4-1Bを基本にイラストを作成してあります。

# NUMERICAL INDEX OF PARTS

| PART NO  | PAGE | REF NO. | PART NO      | PAGE | REF NO. | PART NO      | PAGE | REF NO. |
|----------|------|---------|--------------|------|---------|--------------|------|---------|
| 10106102 | 10   | 26      | 26028001     | 2    | 25      | B1308012000  | 8    | 33      |
| 10119006 | 24   | 4       | 40026920     | 36   | 39      | B13081550A0  | 8    | 43      |
| 10119204 | 24   | 5       | B1105145000  | 2    | 1       | B1310012000  | 8    | 31      |
| 10119402 | 24   | 22      | B110514500B  | 38   | 1       | B1311012000  | 8    | 32      |
| 10119907 | 24   | 43      | B1114280000  | 24   | 42      | B1312012000  | 8    | 34      |
| 10120004 | 14   | 14      | B1116246000  | 4    | 70      | B1401145000  | 6    | 18      |
| 10120004 | 24   | 40      | B1117246000  | 4    | 68      | B1402141H0A  | 6    | 23      |
| 10126324 | 30   | 46      | B1118141H0AA | 2    | 2       | B1408141H00  | 6    | 33      |
| 10126803 | 30   | 29      | B1121141HAAD | 2    | 33      | B14115520A0  | 6    | 35      |
| 10161305 | 24   | 3       | B1123141H0A  | 2    | 27·83   | B1414555000  | 6    | 38      |
| 10549657 | 36   | 28      | B1128246000  | 4    | 64      | B1421141H00  | 8    | 28      |
| 10741759 | 36   | 31      | B1128522000  | 2    | 37      | B1424158000  | 12   | 53      |
| 11072204 | 2    | 15      | B1129141H00  | 2    | 42      | B1424158000  | 18   | 62      |
| 11155108 | 32   | 3       | B1131141H00  | 4    | 49      | B1424158000  | 28   | 13      |
| 11155207 | 32   | 4       | B1147141H00  | 28   | 8       | B1501141H00  | 8    | 18      |
| 11157567 | 32   | 7       | B1148141H00  | 28   | 7       | B1509141H00  | 8    | 5       |
| 11415205 | 4    | 27·83   | B1150145000  | 30   | 2       | B1510141H00  | 8    | 7       |
| 11415866 | 34   | 11      | B11501450AA  | 30   | 1       | B1510155000  | 8    | 19      |
| 13160304 | 32   | 30      | B1156115000  | 2    | 26      | B1512141H00  | 14   | 30      |
| 21103304 | 8    | 20      | B1171145000  | 4    | 57      | B1513141H00  | 14   | 31      |
| 21205109 | 6    | 2       | B1172245000  | 16   | 47      | B1515141H00  | 8    | 15      |
| 21212600 | 18   | 65~69   | B1173145000  | 4    | 60      | B152514500A  | 38   | 12      |
| 21212709 | 18   | 65~69   | B11781450A0  | 4    | 54      | B15251450AT  | 38   | 11      |
| 21212808 | 18   | 65~69   | B1179145000  | 4    | 55      | B1526145000  | 10   | 23      |
| 21212907 | 18   | 65~69   | B1180245000  | 4    | 76      | B152614500A  | 38   | 9       |
| 21213004 | 18   | 65~69   | B1181245000  | 4    | 74      | B1601145000  | 16   | 33      |
| 21272802 | 10   | 17      | B1182245000  | 4    | 75      | B1603145000  | 16   | 25      |
| 21286802 | 8    | 26      | B118324500A  | 4    | 65      | B1605145000  | 16   | 29      |
| 21286901 | 34   | 5       | B118324500B  | 4    | 66      | B1606145000  | 24   | 33      |
| 21295308 | 6    | 40      | B1203051000  | 6    | 43      | B1613145000  | 24   | 11      |
| 22860704 | 6    | 41      | B1203141H00  | 6    | 13      | B161314500A  | 38   | 4       |
| 22901409 | 6    | 4       | B1210141H00  | 6    | 32      | B161314500B  | 38   | 5       |
| 22901805 | 4    | 58      | B1211141H00  | 6    | 6       | B1614145000  | 28   | 19      |
| 22904155 | 6    | 11      | B1211226000  | 6    | 10      | B1618226000  | 28   | 33      |
| 22904155 | 10   | 28      | B1212012000  | 6    | 9       | B16191150A0  | 28   | 16      |
| 22906101 | 6    | 5       | B1213012000  | 6    | 8       | B1620145000  | 28   | 2       |
| 22907604 | 8    | 6       | B1214038000  | 30   | 18      | B1621141H00A | 28   | 23      |
| 22916506 | 18   | 51      | B1301145000  | 8    | 14      | B1622141H00  | 28   | 3       |
| 22930358 | 34   | 14      | B1302201000  | 8    | 21      | B16231450A0  | 28   | 11      |
| 22933006 | 36   | 4~6     | B1303271000  | 8    | 46      | B1624141H0A  | 28   | 22      |
| 22933303 | 36   | 12      | B13050120A0  | 8    | 38      | B16272260B0  | 28   | 24      |
| 22934202 | 32   | 25      | B13061550B0  | 8    | 35      | B16301450A0A | 22   | 48      |
| 22934301 | 32   | 26      | B13061550C0  | 8    | 36      | B1631245000  | 16   | 14      |
| 22934400 | 32   | 24      | B13071550A0  | 8    | 41      | B1631245000  | 22   | 49      |
| 22934509 | 32   | 23      | B13071550D0  | 8    | 40      |              |      |         |

# NUMERICAL INDEX OF PARTS

| PART NO      | PAGE | REF NO.      | PART NO      | PAGE | REF NO.      | PART NO      | PAGE | REF NO. |
|--------------|------|--------------|--------------|------|--------------|--------------|------|---------|
| B163214500A  | 18   | 15·75~<br>78 | B18092450A0  | 18   | 49           | B3025141H00A | 10   | 31      |
| B163214500B  | 18   | 15·75~<br>78 | B1837201SA0  | 18   | 56           | B3026141H00  | 10   | 38      |
| B163214500C  | 16   | 15·75~<br>78 | B183924500A  | 16   | 12·31·58     | B3028141H00  | 10   | 42      |
| B163214500D  | 18   | 15·75~<br>78 | B183924500B  | 16   | 12·31·58     | B3029145000  | 10   | 39      |
| B163214500E  | 18   | 15·75~<br>78 | B183924500C  | 18   | 12·31·58     | B3030145000  | 8    | 29      |
| B163214500E  | 36   | 40·41        | B1850512000  | 30   | 45           | B3031141H00  | 8    | 10      |
| B163214500F  | 22   | 50·56~<br>58 | B1851512000  | 30   | 42           | B3031141H00  | 20   | 33      |
| B163214500G  | 22   | 50·56~<br>58 | B185351200AA | 18   | 18·71~<br>74 | B3032141H00  | 8    | 9       |
| B163214500H  | 22   | 50·56~<br>58 | B185351200BA | 18   | 18·71~<br>74 | B3033141H00  | 10   | 4       |
| B163214500J  | 22   | 50·56~<br>58 | B185351200CA | 16   | 18·71~<br>74 | B3034141H00  | 10   | 3       |
| B163214500J  | 36   | 40·41        | B185351200D  | 18   | 18·71~<br>74 | B3035141H00  | 10   | 8       |
| B1633245000  | 24   | 28           | B185351200E  | 18   | 18·71~<br>74 | B3036141H00  | 10   | 1       |
| B1634141H00A | 28   | 10           | B1901141H00  | 6    | 30           | B3037141HA0  | 10   | 5       |
| B1634145000  | 16   | 44           | B1901141HA0  | 6    | 29           | B3038141H00  | 10   | 15      |
| B1635145000  | 16   | 40           | B1902115000  | 6    | 37           | B3111126000  | 2    | 17      |
| B1636141H0A  | 28   | 5            | B1903141H00  | 6    | 34           | B3115552000  | 2    | 19      |
| B1636145000  | 16   | 45           | B1904115000  | 6    | 31           | B3118552F00  | 2    | 13      |
| B1637141H00  | 28   | 4            | B2733761000  | 26   | 49           | B3120125000  | 2    | 23      |
| B1637145000  | 16   | 46           | B3001141HA0  | 6    | 16           | B3126012000  | 2    | 20      |
| B1638141H00  | 28   | 9            | B3002141H00  | 6    | 19           | B3127127000  | 2    | 12      |
| B1638245000  | 24   | 36           | B3003141H00A | 10   | 47           | B3128012000  | 2    | 18      |
| B1639145000  | 24   | 27           | B3005141H00  | 8    | 2            | B3129053000  | 2    | 22      |
| B1640145000  | 24   | 10           | B3005141H00  | 10   | 18           | B3132552000  | 2    | 21      |
| B1641245000  | 24   | 25           | B3006141H00  | 8    | 8            | B3134141H00  | 14   | 34      |
| B1642245000  | 24   | 26           | B3007141H00  | 12   | 49           | B3214047000  | 2    | 8       |
| B1643145000  | 16   | 38           | B3008141H00  | 12   | 52           | B3216047000  | 2    | 10      |
| B1644245000  | 24   | 34           | B3009141H0A  | 12   | 50           | B3414245000  | 14   | 42      |
| B1645245000  | 24   | 30           | B3010141H00  | 12   | 51           | B3415145000  | 14   | 44      |
| B1646201000  | 28   | 28           | B3011141H00  | 10   | 46           | B3416141H00A | 14   | 37      |
| B1646245000  | 16   | 24           | B3011141H0A  | 10   | 44           | B3420245000  | 32   | 12      |
| B1647145000  | 16   | 41           | B3012141H00A | 10   | 10           | B34202450A0  | 32   | 11      |
| B1647226000  | 28   | 26           | B3013141H0A  | 10   | 12           | B3421245000  | 32   | 29      |
| B1648122000  | 28   | 29           | B3013141H0B  | 10   | 40           | B34212450A0  | 32   | 28      |
| B1651245000  | 16   | 42           | B3014141H00B | 10   | 11           | B3422245000  | 32   | 13      |
| B1652245000  | 24   | 31           | B3015141H00  | 8    | 23           | B3423245000  | 32   | 14      |
| B1660145000  | 16   | 43           | B3015141H00  | 10   | 20           | B3424141H00  | 32   | 17      |
| B1801145000  | 16   | 39           | B3016141H00  | 10   | 9            | B3424245000  | 32   | 19      |
| B1802245000  | 16   | 36           | B3017141H00B | 10   | 22           | B3425141H00  | 32   | 18      |
| B1803145000  | 16   | 32           | B3020141H00  | 8    | 12           | B3425245000A | 32   | 20      |
|              |      |              | B3023141H00A | 10   | 35           | B34262450A0  | 32   | 22      |
|              |      |              | B3023141HA0A | 10   | 34           | B3433141H0A  | 32   | 15      |
|              |      |              | B3024141H00  | 10   | 36           | B3434141H00  | 32   | 16      |
|              |      |              |              |      |              | B35031450A0  | 30   | 10      |
|              |      |              |              |      |              | B3504201000  | 30   | 9       |
|              |      |              |              |      |              | B3505145000  | 30   | 3       |

NUMERICAL INDEX OF PARTS

| PART NO     | PAGE | REF NO. | PART NO      | PAGE | REF NO. | PART NO     | PAGE | REF NO. |
|-------------|------|---------|--------------|------|---------|-------------|------|---------|
| B3506245000 | 30   | 22      | CQ202000000  | 30   | 11      | D2406245E0A | 20   | 14      |
| B35112460A0 | 30   | 38      | CS0510713SD  | 14   | 41      | D2408245E00 | 20   | 5       |
| B3512246000 | 30   | 39      | D1105145E00  | 2    | 32      | D2409245E00 | 20   | 24      |
| B3515201000 | 30   | 13      | D1105145E0B  | 38   | 2       | D2410245E00 | 20   | 26      |
| B3517009000 | 4    | 77      | D1105145E0T  | 38   | 3       | D2411245E00 | 20   | 17      |
| B3520245000 | 30   | 32      | D1113126WA0  | 36   | 27      | D2412245E00 | 16   | 21      |
| B3520586000 | 30   | 4       | D1114245F00  | 36   | 33      | D2413245E00 | 16   | 22      |
| B3523245000 | 30   | 27      | D1126560E00A | 2    | 39      | D2414141E00 | 22   | 52      |
| B3525245000 | 30   | 35      | D1129141EA0  | 36   | 29      | D2414245E00 | 20   | 36      |
| B3527012000 | 30   | 12      | D1171145E00  | 2    | 43      | D2414245E0A | 22   | 55      |
| B35272450A0 | 30   | 34      | D1172245E00  | 18   | 70      | D2415245E00 | 20   | 35      |
| B3534012000 | 30   | 7       | D1173145E00  | 2    | 29      | D2415245EA0 | 20   | 32      |
| B3534155000 | 30   | 21      | D1201141E00A | 6    | 1       | D2416245E00 | 20   | 23      |
| B3537201000 | 28   | 32      | D1206141E00  | 6    | 27      | D2417245EA0 | 20   | 20      |
| B3537201000 | 30   | 37      | D1403141E00  | 6    | 14      | D2418245E00 | 20   | 37      |
| B3538112000 | 14   | 23      | D1418141E00  | 6    | 22      | D2419245E00 | 16   | 7       |
| B71140120A0 | 32   | 8       | D1512141E00  | 14   | 26      | D2420145E00 | 16   | 4       |
| B820424500A | 36   | 13      | D1525141EA0  | 8    | 27      | D2421245E00 | 20   | 30      |
| B8228125000 | 36   | 2       | D1525141EAA  | 38   | 10      | D2423245E00 | 20   | 34      |
| B910114500A | 34   | 2       | D1613145E00  | 24   | 32      | D2424145E00 | 2    | 44      |
| B91011450AA | 34   | 1       | D1613145E0A  | 38   | 6       | D2425245E00 | 2    | 45      |
| B9101552000 | 36   | 3       | D1613145E0B  | 38   | 7       | D2426245E00 | 2    | 46      |
| B91021450AA | 34   | 4       | D1613145E0T  | 38   | 8       | D2427145E00 | 20   | 27      |
| B9106145000 | 34   | 6       | D1621141E00  | 26   | 53      | D2428141E00 | 20   | 4       |
| B9107145000 | 34   | 7       | D1624141E0A  | 24   | 44      | D2428245E00 | 20   | 43      |
| B9108145000 | 34   | 8       | D1630145EA0A | 16   | 13      | D2429145E00 | 4    | 52      |
| B9110012000 | 36   | 4~6     | D1680141EA0  | 26   | 55      | D2430245EA0 | 20   | 31      |
| B9110245000 | 36   | 19      | D1681141E0A  | 24   | 13      | D2431245E00 | 16   | 5       |
| B9111012000 | 36   | 4~6     | D1682141E00  | 24   | 37      | D2432245E00 | 20   | 18      |
| B9111245000 | 36   | 15      | D1683141E00  | 26   | 50      | D2432245E0A | 22   | 53      |
| B9112012000 | 36   | 7·8     | D1684141E00A | 24   | 21      | D2433245E00 | 18   | 60      |
| B9113012000 | 36   | 7·8     | D1685141E00  | 24   | 39      | D2434245E00 | 20   | 54      |
| B9117201000 | 18   | 53      | D1686141E00  | 26   | 51      | D2434245E00 | 22   | 54      |
| B9117201000 | 36   | 9       | D1687141E00  | 24   | 23      | D2435245E00 | 4    | 51      |
| B91210120A0 | 36   | 11      | D1830560EA0  | 18   | 52      | D2436141E00 | 16   | 20      |
| B9130245000 | 36   | 16      | D1837145E0K  | 18   | 54      | D2436245E00 | 4    | 53      |
| BP300000000 | 26   | 48      | D1837145EAA  | 18   | 55      | D2441141E00 | 16   | 19      |
| BT0400251EC | 30   | 36      | D2120555C00  | 20   | 45      | D2464555B00 | 24   | 16      |
| BT0500300EA | 30   | 33      | D2401245E00  | 16   | 16      | D3111141EAA | 2    | 14      |
| BT0630520Z0 | 36   | 26      | D2402245E00  | 16   | 11      | D3142141E00 | 4    | 82      |
| CM300200001 | 4    | 86      | D2402245E00  | 36   | 21      | D3142141E0A | 2    | 11      |
| CM301300001 | 4    | 85      | D2403245E00  | 20   | 7       | D3149141E00 | 14   | 13      |
| CM500300001 | 34   | 3       | D2404245E00  | 20   | 11      | D3151141E00 | 14   | 21      |
| CQ200000000 | 28   | 17      | D2405245E00  | 16   | 35      | D3152141E00 | 14   | 20      |
| CQ202000000 | 8    | 45      | D2405245E00  | 20   | 13      | D3153141E00 | 14   | 6       |

NUMERICAL INDEX OF PARTS

| PART NO      | PAGE | REF NO. | PART NO     | PAGE | REF NO. | PART NO     | PAGE | REF NO. |
|--------------|------|---------|-------------|------|---------|-------------|------|---------|
| D3154141E00  | 14   | 8       | NS6620310SP | 14   | 38      | SS2090710TP | 2    | 50      |
| D3155141E00  | 14   | 11      | NS6660430SP | 8    | 22      | SS2090710TP | 4    | 50      |
| D3156141E00  | 14   | 5       | NS6680320SP | 10   | 2       | SS2090710TP | 36   | 30      |
| D3157141E0A  | 14   | 3       | NS6680410SP | 28   | 18      | SS2090810SP | 18   | 59      |
| D3158141E00  | 14   | 25      | PS0300132KH | 14   | 28      | SS2110915SP | 2    | 31      |
| D3159141E00  | 14   | 17      | PS0300201KP | 10   | 6       | SS2110930SP | 30   | 41      |
| D3160141E00  | 14   | 24      | RE0250000K0 | 14   | 10      | SS5060310SP | 2    | 24      |
| D3161560EA0  | 2    | 5       | RE0300000K0 | 24   | 35      | SS5090610SP | 2    | 40      |
| D3162555B00  | 2    | 7       | RE0400000K0 | 10   | 37      | SS5110710SP | 16   | 23      |
| D3162560E00  | 2    | 6       | RE0400000K0 | 24   | 15      | SS6060210SP | 18   | 48      |
| D3168555H0B  | 2    | 9       | RE0600000K0 | 24   | 24      | SS6081210SP | 18   | 57      |
| D3410141E0AA | 14   | 39      | RE0700000K0 | 12   | 54      | SS6090510TP | 20   | 44      |
| D3501245E00  | 20   | 6       | RE0700000K0 | 18   | 63      | SS6090610SP | 18   | 64      |
| D3502245E00  | 30   | 19      | RE0700000K0 | 28   | 14      | SS6090670TP | 6    | 36      |
| D3513245EA0  | 30   | 17      | RO061180100 | 4    | 61      | SS6090810SP | 20   | 28      |
| D3916481C00  | 30   | 24      | RO074240100 | 28   | 6       | SS6110480SP | 34   | 9       |
| D6037245GA0  | 22   | 59      | SD0550271TP | 14   | 18      | SS6110610TP | 8    | 25      |
| D7101245E00  | 36   | 22      | SD0600271SP | 14   | 32      | SS6111610SP | 4    | 48      |
| D7102245E00  | 36   | 23      | SD0600321SP | 14   | 33      | SS6121050SP | 28   | 12      |
| D8201145G00  | 32   | 2       | SD0630301SP | 14   | 15      | SS6121210SP | 10   | 30      |
| D8201145GA0  | 32   | 1       | SD0640321SP | 14   | 19      | SS6121210SP | 28   | 25      |
| D8204555D00  | 32   | 5       | SD0640321SP | 16   | 6       | SS6151220SP | 28   | 31      |
| D9117141E00  | 18   | 61      | SD0720331SP | 24   | 52      | SS6151440SP | 12   | 48      |
| D9117141E00  | 36   | 10      | SD0720331SP | 26   | 52      | SS6661110SP | 28   | 1       |
| E9862201000  | 18   | 50      | SD0790351SP | 14   | 36      | SS7060310SP | 16   | 10      |
| GES12153000  | 20   | 47      | SD0800352SP | 4    | 69      | SS7060610SP | 4    | 73      |
| GES12153000  | 30   | 30      | SD0850751SP | 8    | 1       | SS7080510TP | 6    | 20      |
| GES12153000  | 36   | 20      | SD0850751SP | 10   | 19      | SS7080520SP | 24   | 29      |
| GES12155000  | 2    | 4       | SD0950802SH | 28   | 15      | SS7090610SP | 10   | 25      |
| HK034610140  | 22   | 60      | SD0991551SP | 14   | 35      | SS7090620TP | 2    | 41      |
| HK03464000B  | 22   | 62      | SK1483201SE | 32   | 10      | SS7090710SP | 24   | 38      |
| J106600000F  | 36   | 14      | SK3311600SE | 32   | 6       | SS7090910SP | 30   | 44      |
| MAO11532000  | 36   | 32      | SK3482500SC | 34   | 12      | SS7091110SP | 8    | 17      |
| MAT81126T00  | 24   | 12      | SK3513200SC | 32   | 9       | SS7091110SP | 10   | 21      |
| MDP170B2100  | 6    | 24      | SM1030601SA | 14   | 9       | SS7091110SP | 28   | 30      |
| MDP170B2102  | 36   | 1       | SM4030601SB | 14   | 1       | SS7091410SP | 16   | 1       |
| MTJVM00520A  | 36   | 38      | SM4040601SC | 36   | 34      | SS7110510SP | 2    | 28      |
| MTSP00750B0  | 36   | 37      | SM6081552TP | 4    | 63      | SS7110540SP | 14   | 40      |
| NM6060001SD  | 36   | 18      | SM8040602TP | 20   | 2       | SS7110540SP | 16   | 17      |
| NS6090310SP  | 30   | 43      | SM9061203SE | 32   | 27      | SS7110710SP | 2    | 80      |
| NS6150310SP  | 8    | 3       | SQ1110401MZ | 22   | 51      | SS7110710SP | 4    | 80      |
| NS6150310SP  | 10   | 14      | SQ1110401MZ | 30   | 8       | SS7110710SP | 14   | 22      |
| NS6150430SP  | 26   | 54      | SQ1150451MZ | 30   | 40      | SS7110710SP | 20   | 46      |
| NS6150430SP  | 36   | 24      | SS2090710SL | 4    | 56      | SS7110710SP | 24   | 14      |
| NS6160520SP  | 10   | 32      | SS2090710SP | 4    | 59      | SS7110710SP | 30   | 23      |

## NUMERICAL INDEX OF PARTS

| PART NO     | PAGE | REF NO. | PART NO     | PAGE | REF NO. |
|-------------|------|---------|-------------|------|---------|
| SS7110710SP | 36   | 25      | SS8660612TP | 20   | 8       |
| SS7110840SP | 8    | 16      | SS8660810TP | 8    | 44      |
| SS7110910SP | 10   | 13      | SS8681950SP | 6    | 26      |
| SS7110910SP | 14   | 7       | SS8701042TP | 16   | 26      |
| SS7110910SP | 20   | 42      | SS9111010SP | 24   | 7       |
| SS7111120SP | 10   | 24      | SS9111010SP | 30   | 20      |
| SS7111310SP | 30   | 25      | SS9181520CP | 8    | 30      |
| SS7111410SP | 4    | 81      | SS9182010SN | 32   | 21      |
| SS7111410SP | 16   | 9       | SS9660720SP | 28   | 21      |
| SS7111410TP | 8    | 11      | SS9660910SP | 28   | 20      |
| SS7112420SP | 2    | 34      | TA0550604R0 | 4    | 78      |
| SS7112420SP | 30   | 5       | TA0550604R0 | 8    | 47      |
| SS7120640SP | 14   | 27      | TA0750704R0 | 4    | 79      |
| SS7120910TP | 10   | 16      | TA1120804R0 | 4    | 72      |
| SS7121410TP | 24   | 46      | TA1250406R0 | 2    | 67      |
| SS7151210SP | 24   | 17      | TA1250406R0 | 4    | 67      |
| SS7151210SP | 34   | 10      | TA2100904R0 | 4    | 71      |
| SS7620750SP | 24   | 41      | WP0320501SC | 14   | 2       |
| SS7680870SP | 4    | 62      | WP0371026SD | 16   | 3       |
| SS7681750TP | 6    | 28      | WP0371026SD | 20   | 29      |
| SS8090410SP | 16   | 8       | WP0430800SC | 36   | 35      |
| SS8090670SP | 2    | 16      | WP0501016SC | 34   | 13      |
| SS8110410TP | 2    | 36      | WP0501016SD | 20   | 38      |
| SS8110410TP | 16   | 27      | WP0501016SD | 24   | 6       |
| SS8110750SP | 14   | 29      | WP0621016SD | 14   | 43      |
| SS8150510TP | 10   | 45      | WP0621016SD | 24   | 19      |
| SS8150510TP | 24   | 45      | WP0650876SD | 10   | 33      |
| SS8150710SP | 2    | 38      | WP0751576SD | 36   | 17      |
| SS8150710SP | 6    | 7       | WS0410002KN | 16   | 2       |
| SS8150710SP | 16   | 28      | WS0410002KN | 36   | 36      |
| SS8150710SP | 28   | 27      | WS0631510KP | 24   | 18      |
| SS8150710SP | 30   | 16      | WT0530002KS | 20   | 39      |
| SS8150750SP | 10   | 41      |             |      |         |
| SS8150830SP | 16   | 30      |             |      |         |
| SS8151150SP | 6    | 21      |             |      |         |
| SS8151230SP | 20   | 25      |             |      |         |
| SS8151550SP | 6    | 42      |             |      |         |
| SS8151550SP | 8    | 13      |             |      |         |
| SS8151550SP | 16   | 37      |             |      |         |
| SS8660530TP | 10   | 7       |             |      |         |
| SS8660530TP | 16   | 34      |             |      |         |
| SS8660530TP | 20   | 12      |             |      |         |
| SS8660610TP | 6    | 25      |             |      |         |
| SS8660610TP | 8    | 24      |             |      |         |
| SS8660610TP | 10   | 29      |             |      |         |