

MODEL : MH-481-4 SERIES/MH-481-5 SERIES

List No : 0259-07

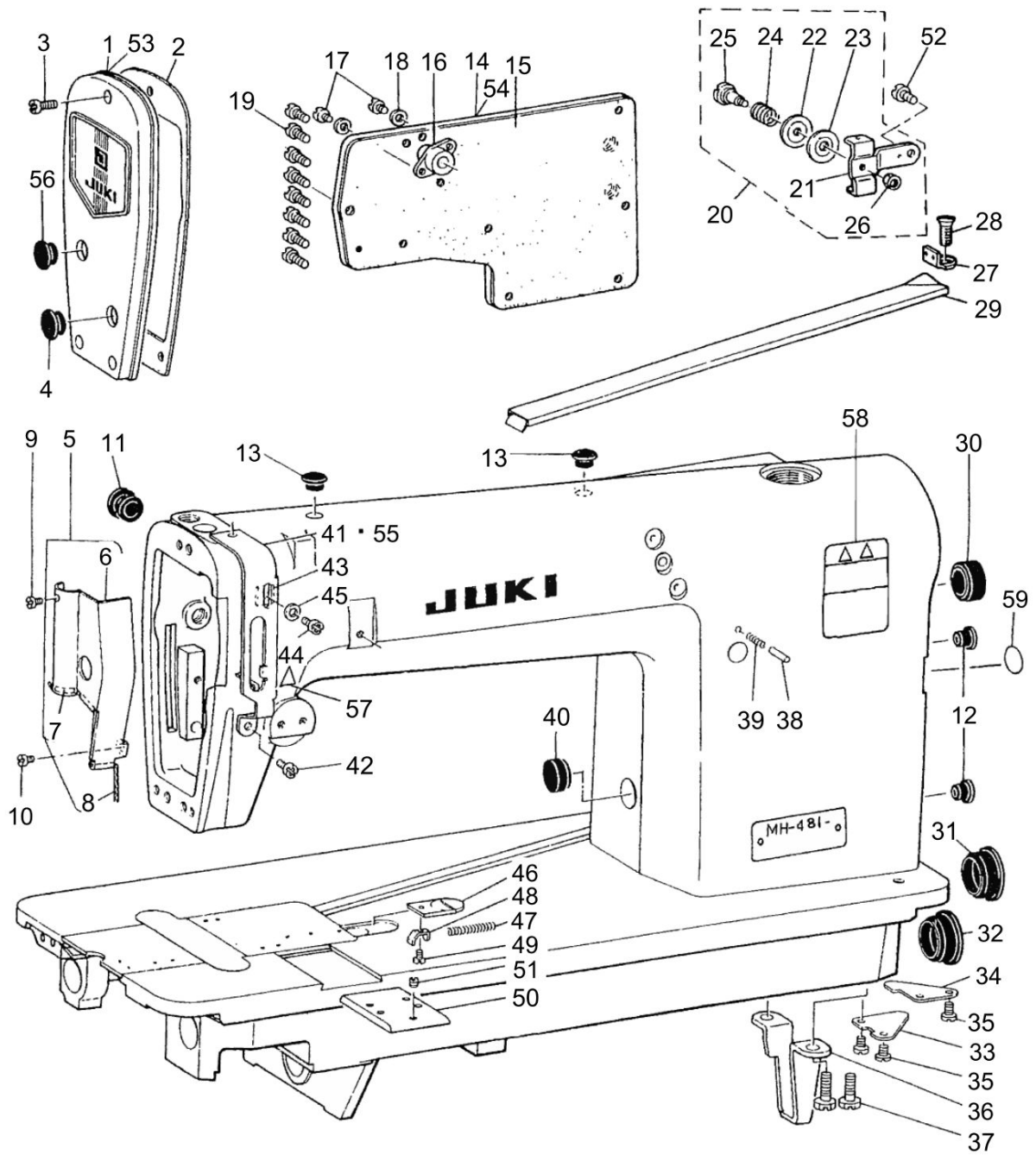
PARTS LIST

Published:09/10/2017

CONTENTS

MACHINE FRAME & MISCELLANEOUS COVER COMPONENTS (1)	1
MACHINE FRAME & MISCELLANEOUS COVER COMPONENTS (2)	5
MAIN SHAFT & NEEDLE BAR COMPONENTS	9
PRESSER BAR, UPRIGHT SHAFT & LOWER SHAFT COMPONENTS	13
FEED MECHANISM COMPONENTS (1).....	17
FEED MECHANISM COMPONENTS (2).....	21
THREAD SPREADER COMPONENTS	23
LOOPER & NEEDLE GUARD COMPONENTS	25
THREAD TENSION CONTROLLER COMPONENTS	29
THREAD TRIMMER COMPONENTS	33
THREAD DRAW OUT SOLENOID COMPONENTS	37
WIPER COMPONENTS.....	41
OIL LUBRICATION MECHANISM COMPONENTS.....	45
OIL RESERVOIR & KNEE LIFTER COMPONENTS.....	47
THREAD STAND COMPONENTS.....	49
BELT COVER COMPONENTS.....	51
LIST FOR INFORMATION OF CHANGE (1).....	53
LIST FOR INFORMATION OF CHANGE (2).....	54
HOW TO MAKE USE OF THIS PARTS LIST	55

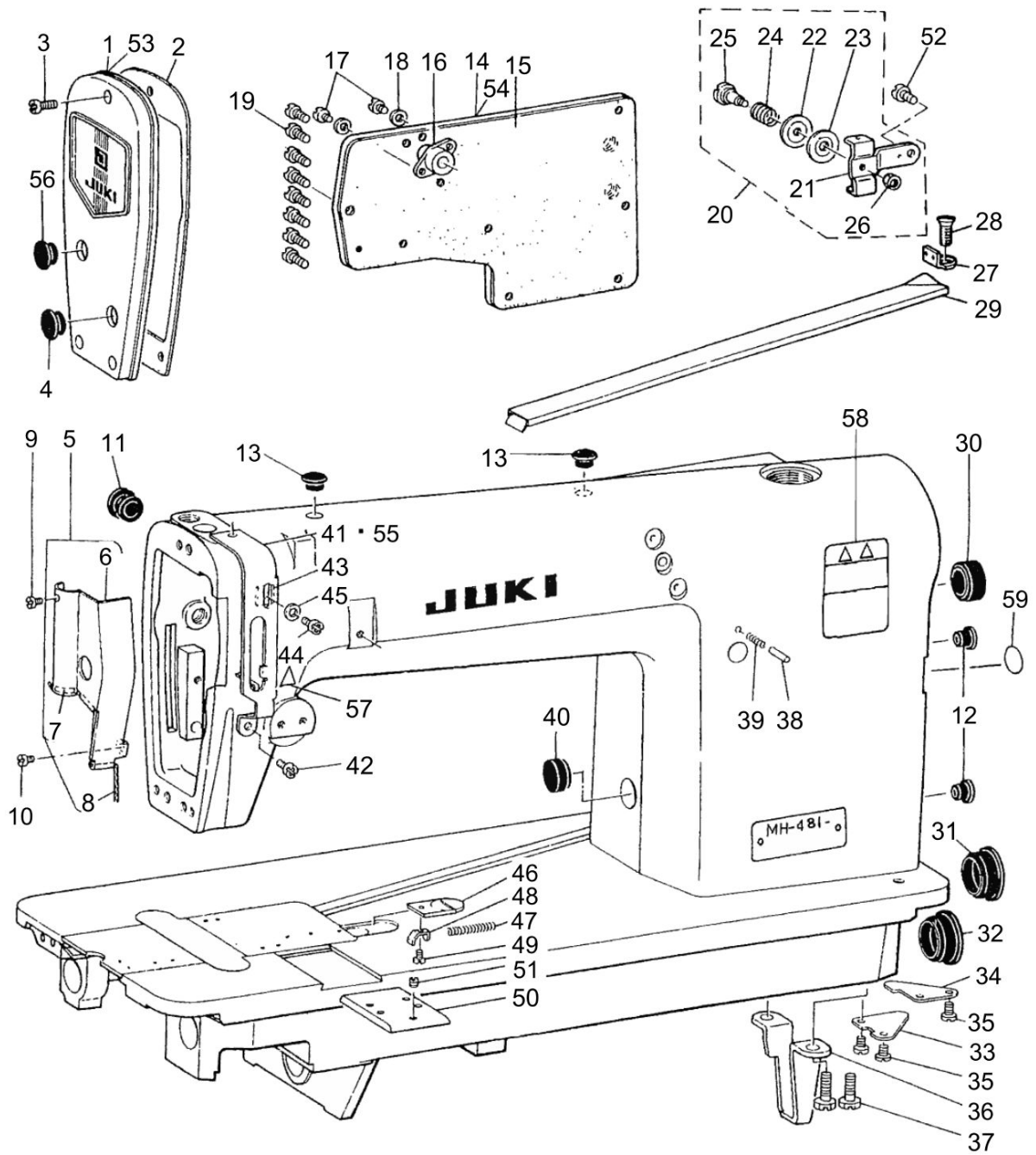
MACHINE FRAME & MISCELLANEOUS COVER COMPONENTS (1)



MACHINE FRAME & MISCELLANEOUS COVER COMPONENTS (1)

No.	Parts No.	Parts name	Remarks	Level	Cons	Qty
1	40114236	FACE PLATE ASM.				1
2	B1122552000	FACE PLATE GASKET				1
3	SS4111015SP	SCREW 11/64-40 L=10				1
4	TA1250406R0	RUBBER PLUG D=12.5 L=4				1
5	B11304810A0	ARM OIL SHIELD ASM.				1
6	B1130481000A	ARM OIL SHIELD		*		1
7	B1131481000	NON-WOVEN FABRIC		*		1
8	B1132481000	OIL WICK		*		1
9	SS6080320SP	SCREW 1/8-44 L=2.5				1
10	SS4110515SP	SCREW 11/64-40 L=5				1
11	TA1250705R0	RUBBER PLUG				1
12	TA0750704R0	RUBBER PLUG				2
13	TA1050504R0	RUBBER PLUG				2
14	D1118481C00	SIDE PLATE				1
15	B1119481000	GASKET				1
16	D3111481CA0	TENSIONRELEASESHAFTCOLLARASM.				1
17	SS6090630SP	SCREW 9/64-40 L=6				2
18	B3534012000	GASKET				2
19	SS4110815SP	SCREW 11/64-40 L=8				8
20	D1913481CA0	THREAD GUIDE ASM.				1
21	D1913481C00	THREAD GUIDE		*		1
22	B3148123000	TENSION DISC		*		1
23	D1917481C00	TENSION DISC (LOWER)		*		1
24	D1914481C00A	TENSION THREAD GUIDE SPRING		*		1
25	B1916481000	TAKE-UP THREAD TENSION POST		*		1
26	NS6060310SP	NUT 3/32-56		*		1
27	B2201481000A	LOOPER THREAD GUIDE				1
28	SS1110710SP	SCREW 11/64-40 L=7				1
29	B2202481000	LOOPER THREAD GUIDE TUBE				1
30	TA2101002R0	RUBBER PLUG				1
31	TA2351305R0	RUBBER PLUG				1
32	TA2351004R0	RUBBER PLUG				1
33	B1134481000	BED OIL SHIELD				1
34	B1135481000	BED OIL SHIELD (B)				1
35	SS7110510SP	SCREW 11/64-40 L=5				3
36	B1106122000	BED SUPPORT PLATE				1
37	SS9151120CP	SCREW 15/64-28 L=11				2
38	22912000	PIN				1
39	22912109	FEED REGULATOR PIN SPRING				1
40	TA1750502R0	RUBBER PLUG D=17.5 L=5				1
41	B1904481000	THREAD TAKE-UP LEVER GUARD				1
42	SS4110515SP	SCREW 11/64-40 L=5				1
43	B1903481000	TAKE-UP THREAD TENSION LEVER				1
44	SS4110515SP	SCREW 11/64-40 L=5				1
45	WP0480856SP	WASHER 4.8X8.4X0.8				1
46	B1110481000A	CAM COVER LATCH				1
47	B1111481000	SPRING				1

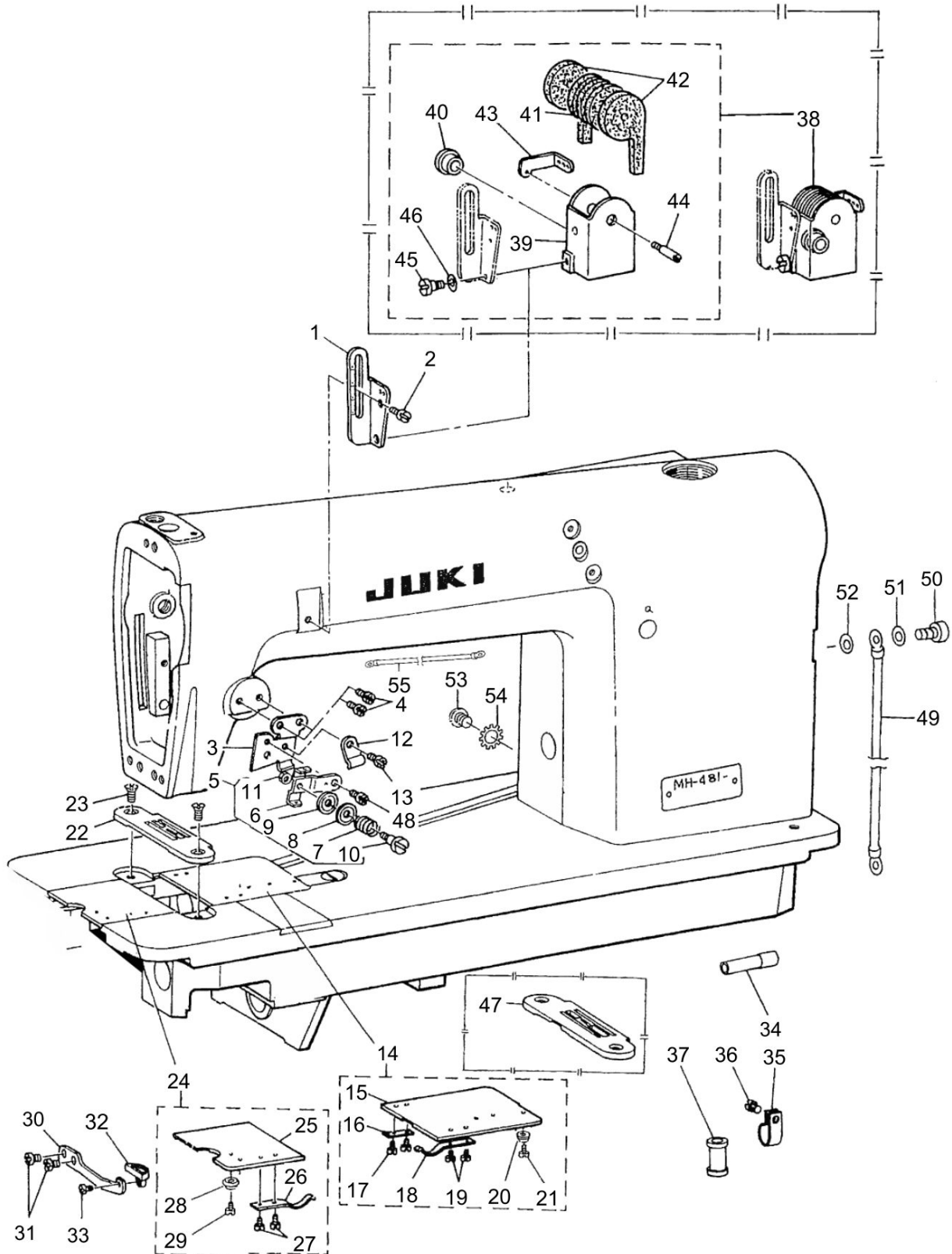
MACHINE FRAME & MISCELLANEOUS COVER COMPONENTS (1)



MACHINE FRAME & MISCELLANEOUS COVER COMPONENTS (1)

No.	Parts No.	Parts name	Remarks	Level	Cons	Qty
48	B1112481000A	SPRING SUSPENSION				1
49	SS6080320SP	SCREW 1/8-44 L=2.5				1
50	B1111038000	ATTACHMENT CLAMP BED SLIDE PLATE				1
51	SS8110310SP	SCREW 11/64-40 L=2.8				1
52	SS4110515SP	SCREW 11/64-40 L=5				1
53	B112155200A	FACE PLATE	FOR URBAN WHITE			1
54	D1118481C0A	SIDE PLATE	FOR URBAN WHITE			1
55	B190448100A	THREAD TAKE-UP LEVER COVER	FOR URBAN WHITE			1
56	TA2050406R0	RUBBER PLUG				1
57	CM300200001	ATTENTION SEAL	FOR JE, USE IN JAPAN			1
58	CM301200001	SAFETY LABEL_S				1
59	22901805	GROUND MARK				1

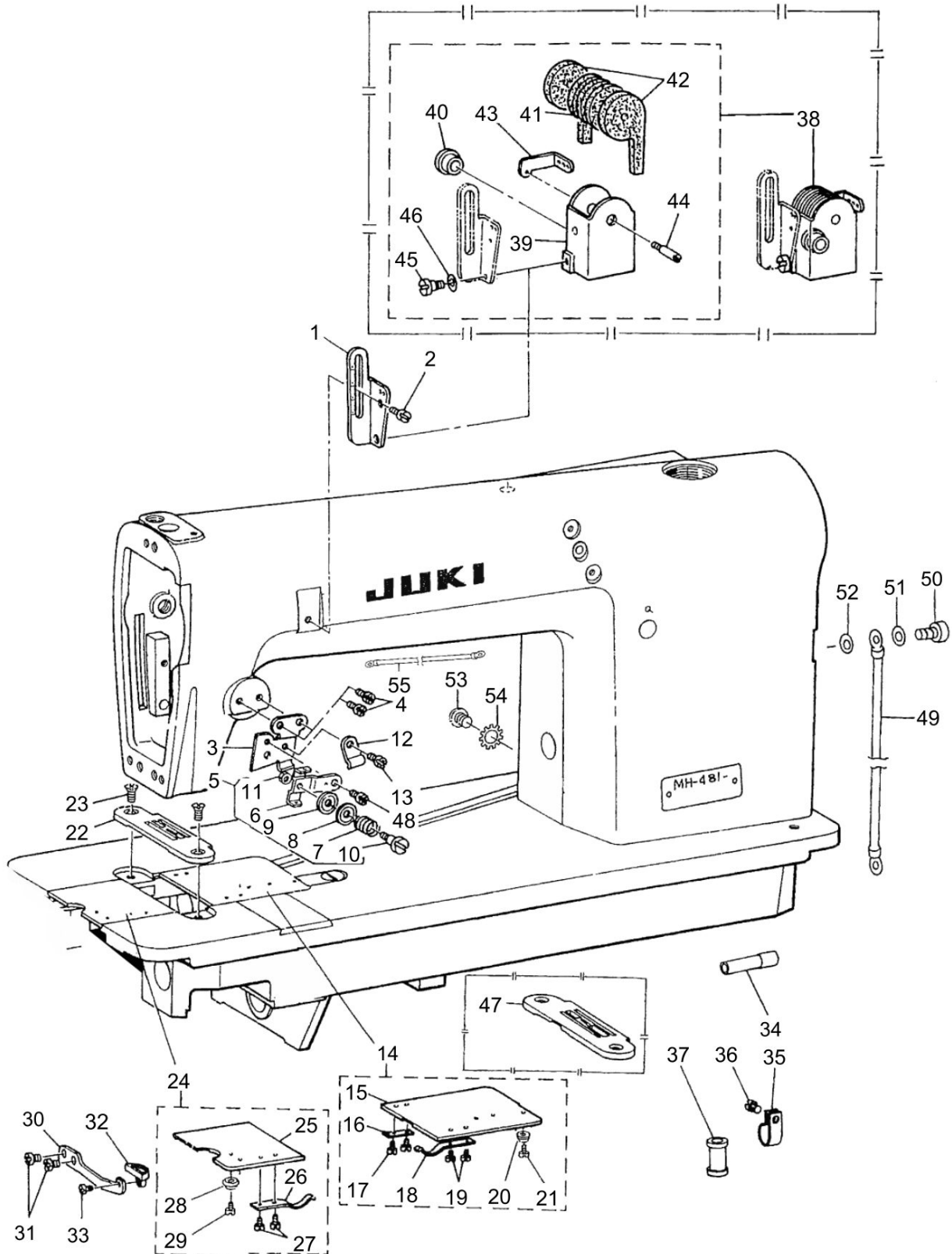
MACHINE FRAME & MISCELLANEOUS COVER COMPONENTS (2)



MACHINE FRAME & MISCELLANEOUS COVER COMPONENTS (2)

No.	Parts No.	Parts name	Remarks	Level	Cons	Qty
1	B1905380000	FRAME THREAD EYELET				1
2	SS4110515SP	SCREW 11/64-40 L=5				1
3	D1912481C00A	TENSION THREAD GUIDE				1
4	SS4110515SP	SCREW 11/64-40 L=5				2
5	D1913481CA0	THREAD GUIDE ASM.				1
6	D1913481C00	THREAD GUIDE		*		1
7	D1914481C00A	TENSION THREAD GUIDE SPRING		*		1
8	B3148123000	TENSION DISC		*		1
9	D1917481C00	TENSION DISC (LOWER)		*		1
10	B1916481000	TAKE-UP THREAD TENSION POST		*		1
11	NS6060310SP	NUT 3/32-56		*		1
12	D3916481C00	TUBE HOLDER				1
13	SS4110515SP	SCREW 11/64-40 L=5				1
14	B11064810A0A	CAM COVER ASM.				1
15	B1106481000A	CAM COVER		*		1
16	B1108481000	CAM COVER SUPPORT		*		1
17	SS6060210SP	SCREW 3/32-56 L=1.9		*		2
18	B1109481000	SPRING		*		1
19	SS6060210SP	SCREW 3/32-56 L=1.9		*		2
20	B1107481000	CAM COVER GUIDE		*		1
21	SS6060340SP	SCREW 3/32-56 L=2.5		*		1
22	B1103481F00	THROAT PLATE				1
23	SS2110920TP	SCREW 11/64-40 L=8.5				2
24	D1104481CA0	BED SLIDE ASM.				1
25	D1104481C00	BED SLIDE		*		1
26	B1115380000	SPRING		*		1
27	SS6060210SP	SCREW 3/32-56 L=1.9		*		2
28	B1107380000	BED SLIDE GUIDE		*		1
29	SS6060340SP	SCREW 3/32-56 L=2.5		*		1
30	B1105380000	BED SLIDE STOPPER				1
31	SS4110515SP	SCREW 11/64-40 L=5				2
32	B1106380000	LATCH				1
33	SS4080415SP	SCREW 1/8-44 L=4				1
34	D2469555B00	TUBE FOR MAGNET CORD				1
35	D2112555B00	CORD HOLDER LARGE				1
36	SS7150940SP	SCREW 15/64-28 L=9				1
37	D2467555B00	RUBBER PLUG				1
38	B11614810B0	SILICONE OIL LUBRICANT ASM.	SPECIAL ORDER PARTS			1
39	B1161481000A	SILICON OIL CASE	SPECIAL ORDER PARTS	*		1
40	TA1050504R0	RUBBER PLUG	SPECIAL ORDER PARTS	*		1
41	B1162481000	SILICON OIL FELT	SPECIAL ORDER PARTS	*		5
42	B1166481000	SILICON OIL FELT	SPECIAL ORDER PARTS	*		2
43	B1167481000	SILICON THREAD GUIDE	SPECIAL ORDER PARTS	*		1
44	B1168481000	SCREW	SPECIAL ORDER PARTS	*		1
45	SD0640231SP	HINGE SCREW D=6.35 H=2.3	SPECIAL ORDER PARTS	*		1
46	WZ0641510KP	WAVED WASHER 6.4X11X0.3	SPECIAL ORDER PARTS	*		1
47	B1103481B00	THROAT PLATE (LIGHT WEIGHT)	SPECIAL ORDER PARTS			1

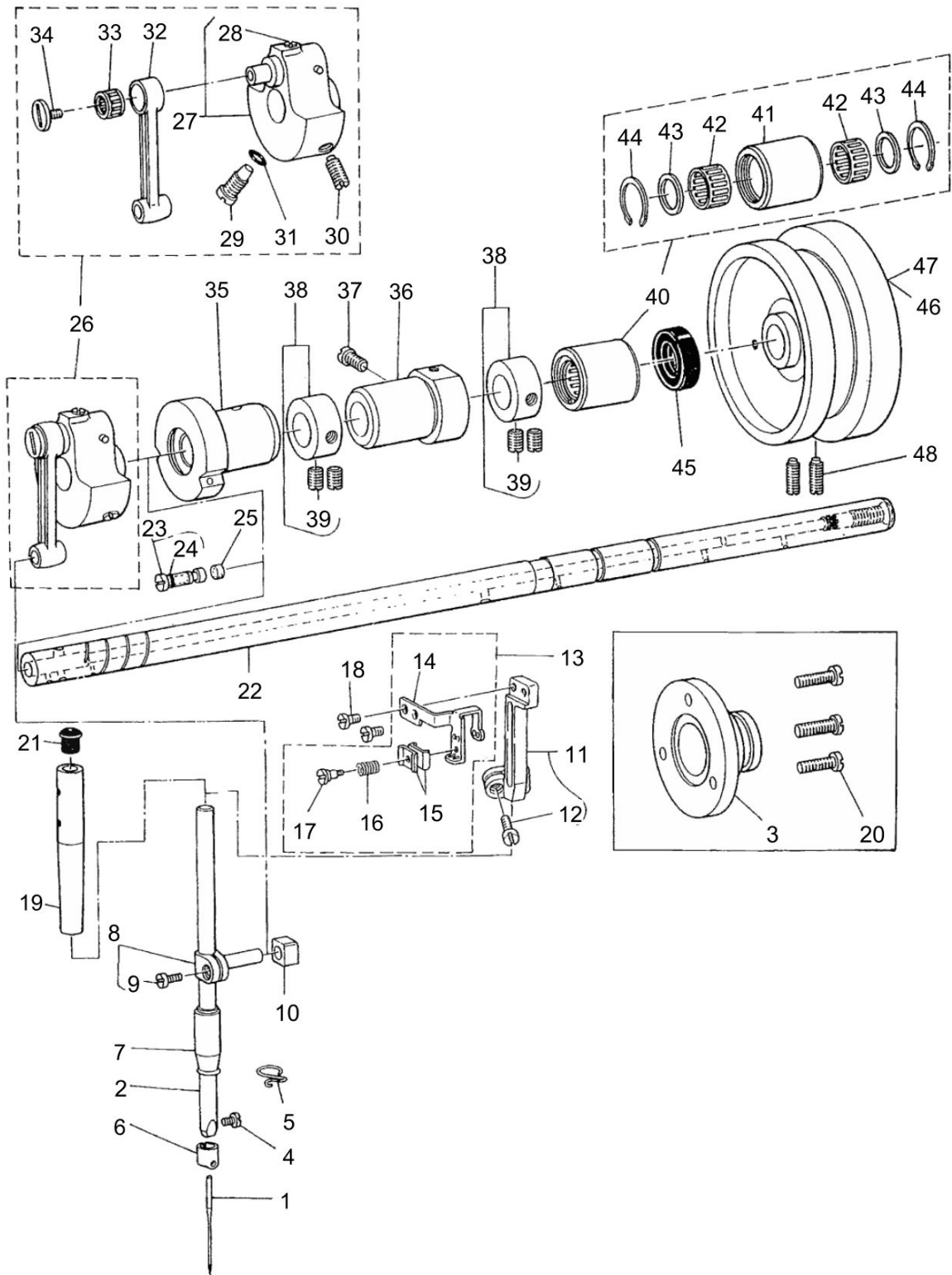
MACHINE FRAME & MISCELLANEOUS COVER COMPONENTS (2)



MACHINE FRAME & MISCELLANEOUS COVER COMPONENTS (2)

No.	Parts No.	Parts name	Remarks	Level	Cons	Qty
48	SS4110515SP	SCREW 11/64-40 L=5				1
49	D9101481CA0	GLAND WIRE ASM.	FOR MH-481-4			1
50	SS7150740SP	SCREW 15/64-28 L=7	FOR MH-481-4			1
51	WP0621026SP	WASHER 6.2X9.5X1	FOR MH-481-4			1
52	WT0640002KN	TOOTHED WASHER	FOR MH-481-4			1
53	SS4110615SP	SCREW 11/64-40 L=6	FOR MH-481-5			1
54	WT0530002KS	TOOTHED WASHER D=5.3	FOR MH-481-5			1
55	22951552	GROUND WIRE ASM.	FOR MH-481-5			1

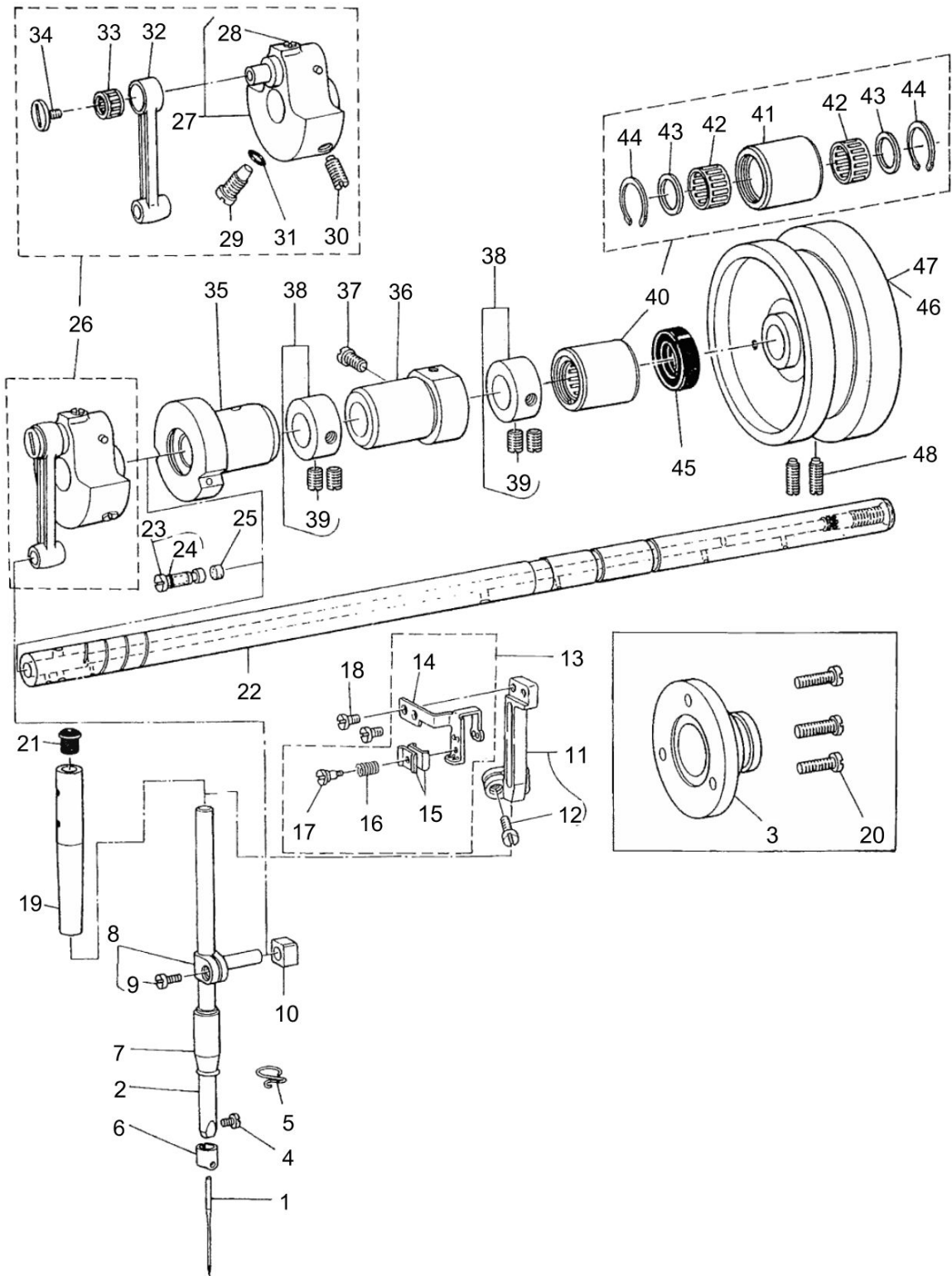
MAIN SHAFT & NEEDLE BAR COMPONENTS



MAIN SHAFT & NEEDLE BAR COMPONENTS

No.	Parts No.	Parts name	Remarks	Level	Cons	Qty
1	MTV700B1100	NEEDLE TVX7 #11				1
2	B1401481000	NEEDLE BAR				1
3	D1230552B00	FLANGE				1
4	SS7080510TP	SCREW 1/8-44 L=4.5				1
5	B1419155000	NEEDLE BAR THREAD GUIDE				1
6	B1418552A00	NEEDLE THREAD GUIDE A				1
7	B1403155000	NEEDLE BAR BUSHING LOWER				1
8	B14114810A0	NEEDLE BAR CONNECTION ASM.				1
9	SS6090670TP	SCREW 9/64-40 L=6		*		1
10	B1414555000	SLIDE BLOCK				1
11	B19024810A0B	THREAD TAKE-UP LEVER ASM.				1
12	SS6091210TP	SCREW 9/64-40 L=12		*		1
13	D1901481CC0	THREAD TAKE-UP LEVER ASM.				1
14	B1901481000A	THREAD TAKE-UP		*		1
15	B1908481000A	THREAD TENSION REGULATING PLATE		*		2
16	D1910481C00	TENSION SPRING		*		1
17	B1909481000A	THREAD TENSION REGULATING STUD		*		1
18	SS6090670TP	SCREW 9/64-40 L=6				2
19	22906101	NEEDLE BAR BUSHING UPPER				1
20	SS7111410TP	SCREW 11/64-40 L=14				3
21	22901409	NEEDLE BAR UPPER BUSH CAP				1
22	B1201481000A	MAIN SHAFT				1
23	B12135520A0A	OIL AMOUNT ADJUSTING PIN ASM.				1
24	RO029180100	RUBBER RING		*		1
25	B1226552000	ROLLER FELT				1
26	B12064810A0	COUNTERWEIGHT ASM.				1
27	B12064810B0	COUNTERWEIGHT ASM.		*		1
28	SS8150710TP	SCREW 15/64-28 L=7		*		1
29	SS7681650TP	SCREW 9/32-28 L=16		*		1
30	SS8681650TP	SCREW 9/32-28 L=16		*		1
31	RO044240100	RUBBER RING		*		1
32	B1408481000	NEEDLE BAR CRANK ROD		*		1
33	B1905541B00	NEEDLE BEARING		*		1
34	B1903552000	LEFT SCREW		*		1
35	B1202481000	BUSHING FRONT				1
36	B1203481B00	BUSHING INTERMEDIATE				1
37	SS7151120SP	SCREW 15/64-28 L=11				1
38	CS147121ESH	THRUST COLLAR ASM.D=14.72 W=12				2
39	SS8660810TP	SCREW 1/4-40 L=8		*		4
40	D1204555DA0	MAIN SHAFT BUSHING REAR ASM.				1
41	D1204555D00	MAIN SHAFT BUSHING REAR		*		1
42	D1230555B00	NEEDLE BEARING		*		2
43	D1231555B00	WASHER		*		2
44	D1232555B00	SNAP RING		*		2
45	D1208555D00	OIL SEAL				1
46	D1217486D00	HAND WHEEL	FOR MH-481-4-3			1
47	D1217486D0A	HAND WHEEL	FOR URBAN WHITE			1

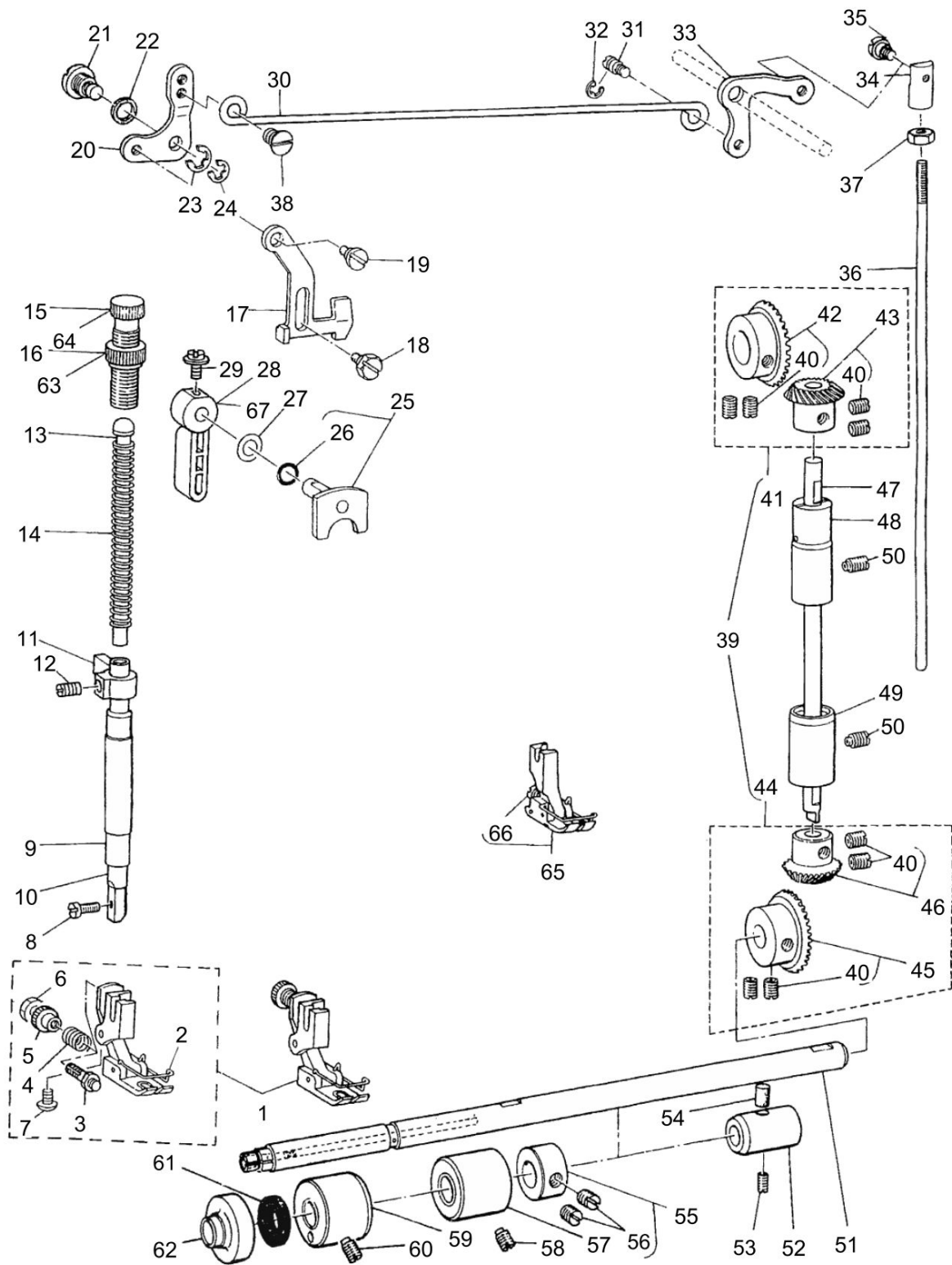
MAIN SHAFT & NEEDLE BAR COMPONENTS



MAIN SHAFT & NEEDLE BAR COMPONENTS

No.	Parts No.	Parts name	Remarks	Level	Cons	Qty
48	SS8151550SP	SCREW 15/64-28 L=15				2

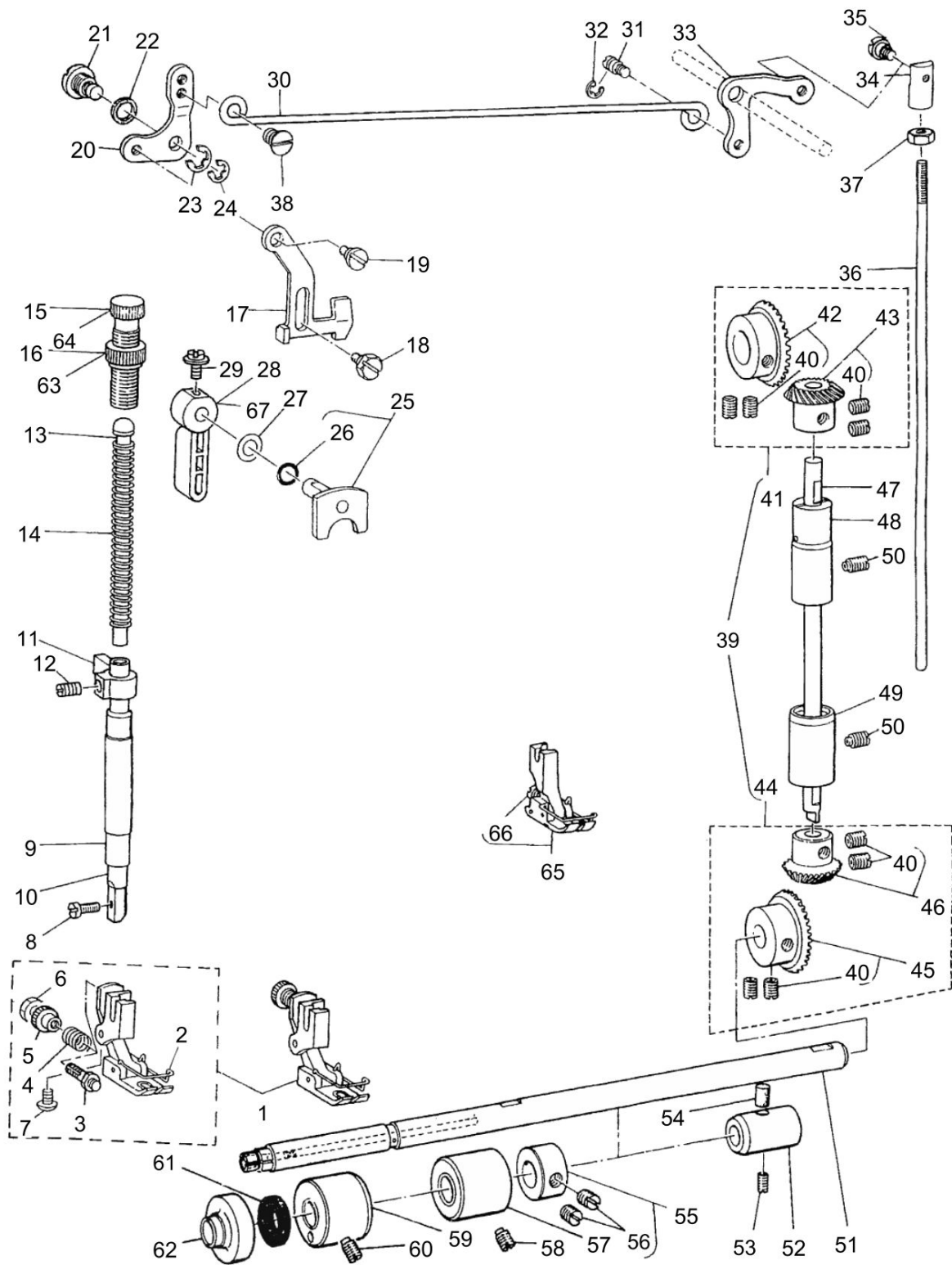
PRESSER BAR, UPRIGHT SHAFT & LOWER SHAFT COMPONENTS



PRESSER BAR, UPRIGHT SHAFT & LOWER SHAFT COMPONENTS

No.	Parts No.	Parts name	Remarks	Level	Cons	Qty
1	B1524481CC0	SLIDING TYPE PRESSER FOOT ASM.				1
2	B1421481000	FINGER GUARD		*		1
3	B1532481C00	ADJUSTING SPRING STUD		*		1
4	B1536481C00	AIR BLOW ADJUSTING PLATE SPRING		*		1
5	B1533481C00	ADJUSTING SCREW		*		1
6	NS6110310SP	NUT 11/64-40		*		1
7	SS6060410TP	SCREW 3/32-56 L=3.5		*		1
8	SS7091110TP	SCREW 9/64-40 L=10.5				1
9	22907109	PRESSER BAR BUSHING LOWER				1
10	22907000	PRESSER BAR				1
11	10178705	PRESSER BAR GUIDE BRACKET				1
12	SS8660610TP	SCREW 1/4-40 L=6				1
13	22907703	PRESSER GUIDE BAR				1
14	22907406	PRESSER SPRING				1
15	B1509555000	PRESSER SPRING REGULATOR				1
16	B1511555000	NUT				1
17	B1515552000	LIFTING LEVER				1
18	SD0630275SP	HINGE SCREW D=6.35 H=2.7				1
19	SD0630301SP	HINGE SCREW D=6.35 H=3				1
20	B1516552000	LIFTING LEVER LINK				1
21	D1517555B00A	HINGE PIN				1
22	B3431581000	LIFTING LEVER GASKET				1
23	B1523226000	SNAP RING				1
24	RE0600000K0	E-RING 6				1
25	B15185550A0	HAND LIFTER CAM ASM.				1
26	RO037180100	RUBBER RING		*		1
27	WP0740516SP	WASHER 7.4X11.8X0.5				1
28	B1520552000A	HAND LIFTER				1
29	B1521555000	SCREW				1
30	B3412415000	LIFTING LEVER CONNECTING ROD				1
31	B3416552000	CONNECTING ROD HINGE SCREW				1
32	RE0500000K0	E-RING				1
33	B3414415000A	LIFTING LEVER LINK RIGHT				1
34	B3416415000A	SWIVEL				1
35	SD0600322SD	HINGE SCREW D=6 H=3.2				1
36	B3415481000	CONNECTING ROD VERTICAL				1
37	NS6620310SP	NUT 3/16-32				1
38	22908909	HINGE SCREW				1
39	B13084810C0	GEAR LOWER ASM.				1
40	SS8660810TP	SCREW 1/4-40 L=8		*		8
41	B13061550B0	GEAR & PINION ASM. UPPER		*		1
42	B13050120A0	GEAR ASM.		*		1
43	B13061550A0	PINION ASM.		*		1
44	B13084810B0	GEAR & PINION ASM.		*		1
45	B13084810A0	GEAR LOWER(LARGE)ASM.		*		1
46	B13061550A0	PINION ASM.		*		1
47	B1301481000A	UPRIGHT SHAFT				1

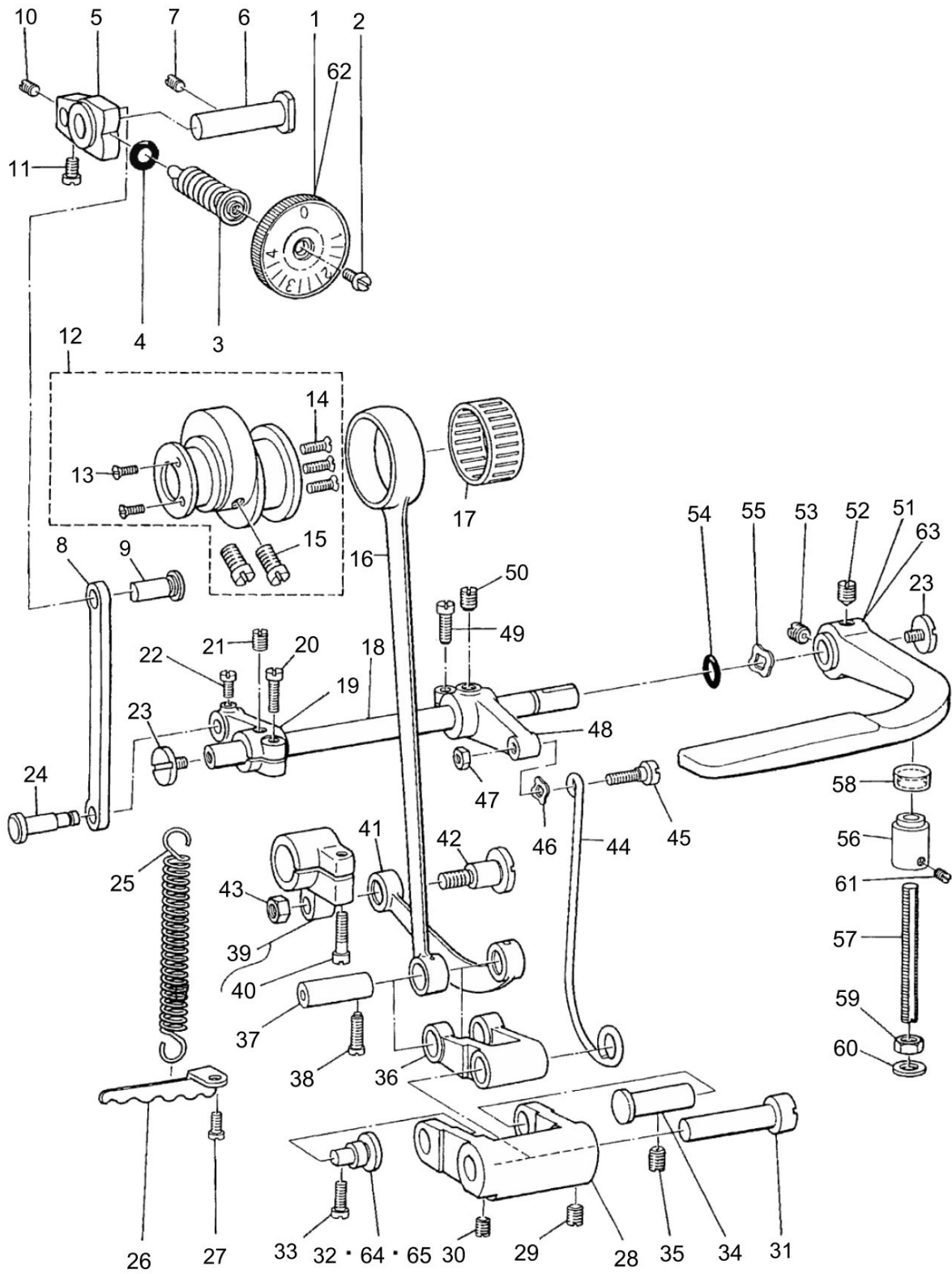
PRESSER BAR, UPRIGHT SHAFT & LOWER SHAFT COMPONENTS



PRESSER BAR, UPRIGHT SHAFT & LOWER SHAFT COMPONENTS

No.	Parts No.	Parts name	Remarks	Level	Cons	Qty
48	B1302552B00	BUSHING UPPER				1
49	11004207	UPRIGHT SHAFT BUSHING LOWER				1
50	SS8151150SP	SCREW 15/64-28 L=10.5				2
51	B1801481000A	LOWER SHAFT				1
52	B1607352000	BUSHING REAR				1
53	SS8151150SP	SCREW 15/64-28 L=10.5				1
54	22814909	FELT				1
55	CS111121ASH	THRUST COLLAR ASM. D=11.11 W=12				1
56	SS8660810TP	SCREW 1/4-40 L=8		*		2
57	B1803481000	BUSHING INTERMEDIATE				1
58	SS8151150SP	SCREW 15/64-28 L=10.5				1
59	B1802481000	BUSHING FRONT				1
60	SS8151150SP	SCREW 15/64-28 L=10.5				1
61	B1813481000	OIL SEAL				1
62	B2226481000	LOOPER THREAD GUARD BUSHING				1
63	22907604	PRESSER SPRING REGULATOR NUT	FOR URBAN WHITE			1
64	22907505	PRESSER SPRING REGULATOR	FOR URBAN WHITE			1
65	B15244810B0	PRESSER FOOT ASM.				1
66	SS5060310SP	SCREW 3/32-56 L=2.8		*		1
67	22907802	HAND LIFTER	FOR URBAN WHITE			1

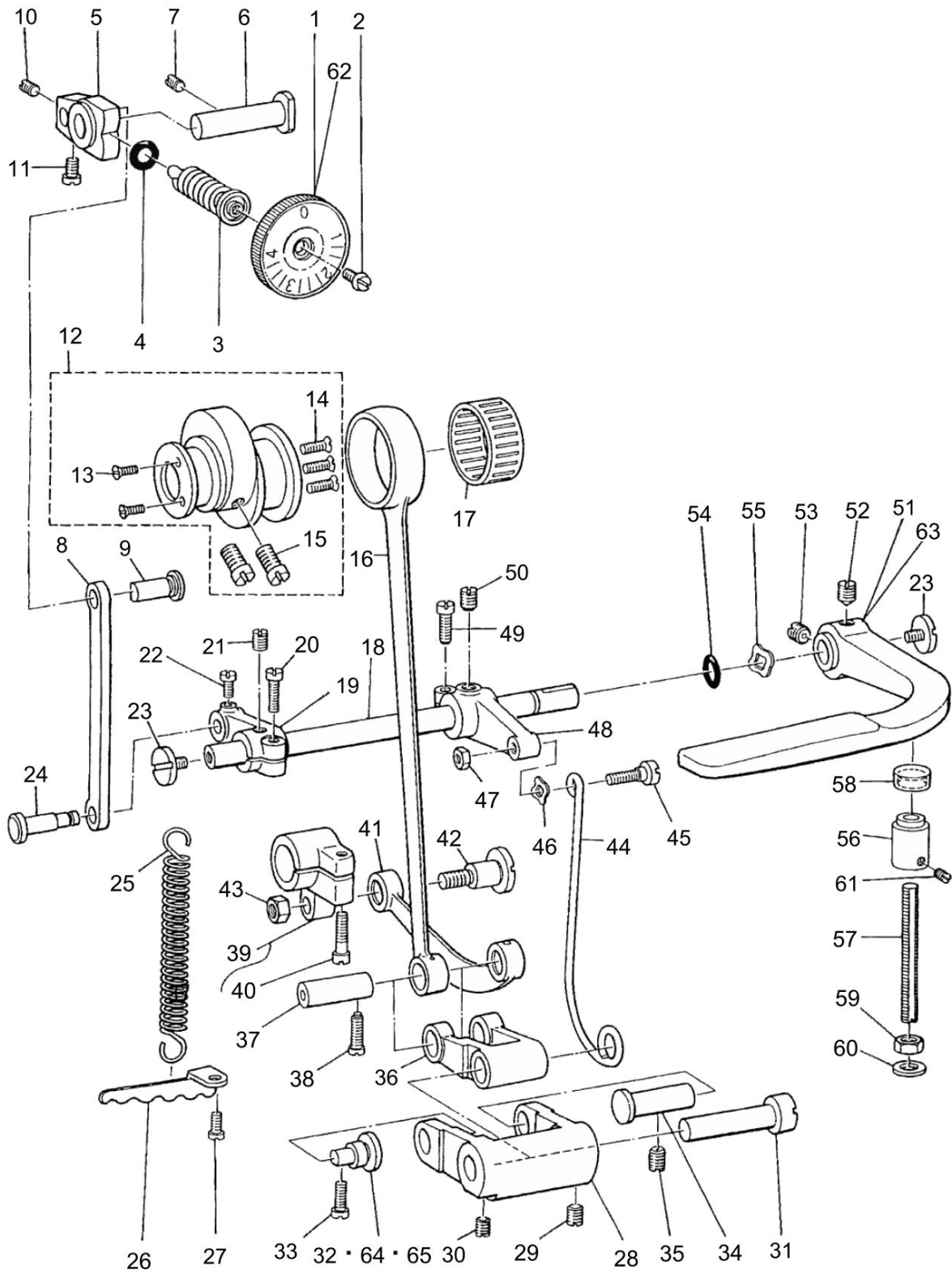
FEED MECHANISM COMPONENTS (1)



FEED MECHANISM COMPONENTS (1)

No.	Parts No.	Parts name	Remarks	Level	Cons	Qty
1	B1623555000A	FEED REGULATOR DIAL				1
2	SS6120930SP	SCREW 3/16-28 L=9				1
3	B1634555000B	STITCH LENGTH REGULATING SCREW				1
4	RO074240100	RUBBER RING				1
5	B1620481000	FEED REGULATOR				1
6	B1622555000	HINGE PIN				1
7	SS8151150SP	SCREW 15/64-28 L=10.5				1
8	40114880	FEED REGULATOR CONNECTING ROD				1
9	B1626555000	FEED REGULATOR CONNECTING ROD				1
10	SS8110510SP	SCREW 11/64-40 L=5				1
11	SS7110710SP	SCREW 11/64-40 L=7				1
12	B16104810B0	FEED ECCENTRIC CAM ASM.				1
13	SS2090710TP	SCREW 9/64-40 L=7.2		*		2
14	SS2110930SP	SCREW 11/64-40 L=8.7		*		3
15	SS6661110SP	SCREW 1/4-40 L=11		*		2
16	40114884	FEEDROCKERSHAFTCONNECTINGROD				1
17	22914006	BEARING B	SELECTIVE PARTS			1
18	B1621555000A	CONTROL LEVER SHAFT				1
19	40120458	CONTROL LEVER SHAFT CRANK				1
20	SS6121210SP	SCREW 3/16-28 L=12				1
21	SS8150710SP	SCREW 15/64-28 L=7				1
22	SS7110910SP	SCREW 11/64-40 L=8.5				1
23	SS7620750SP	SCREW 3/16-32 L=6.5				2
24	B1628555000	TENSION SPRING SUSPENSION STUD				1
25	B1646555000	TENSION SPRING				1
26	B1636555000	SUSPENSION BRACKET				1
27	SS7111120SP	SCREW 11/64-40 L=10.5				1
28	40136257	FEED DRIVING ROCKER				1
29	SS8150710SP	SCREW 15/64-28 L=7				1
30	SS8620610SP	SCREW 3/16-32 L=6				1
31	40114882	FEED DRIVING ROCKER HINGE PIN				1
32	B1619555000	FEED DRIVING ROCKER HINGE PIN				1
33	SS7111120SP	SCREW 11/64-40 L=10.5				1
34	B1618161000	FEED DRIVING ROCKER ARM HINGE				1
35	SS8150710SP	SCREW 15/64-28 L=7				1
36	40136256	FEED DRIVING ROCKER ARM				1
37	B1633555000	ROCKER ARM CONNECTING PIN				1
38	SS7111260SP	SCREW 11/64-40 L=12				1
39	B1608481000	FEED ROCKER SHAFT CRANK ASM.				1
40	SS6121610TP	SCREW 3/16-28 L=15.5		*		1
41	B1606481000	CONNECTING ROD				1
42	SD1020701SP	HINGE SCREW D=10.2 H=7				1
43	NS6680320SP	NUT 9/32-28				1
44	B1630555000	ROCKER ARM CONNECTING ROD				1
45	SD0500401SP	HINGE SCREW D=5 H=4				1
46	WZ0541510KP	WAVED WASHER 5.4X9.0X0.3				1
47	NS6120310SP	NUT 3/16-28				1

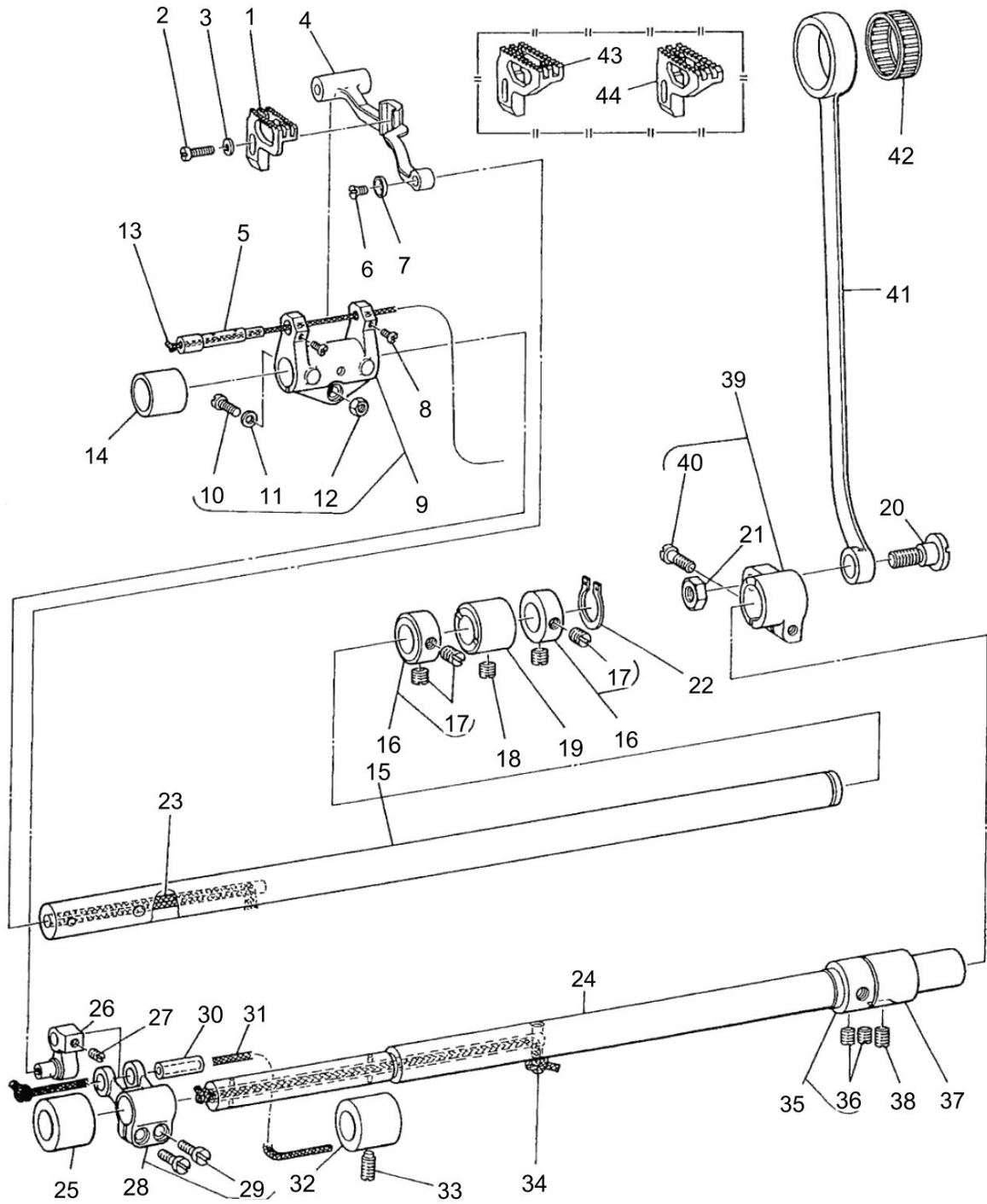
FEED MECHANISM COMPONENTS (1)



FEED MECHANISM COMPONENTS (1)

No.	Parts No.	Parts name	Remarks	Level	Cons	Qty
48	40114881	CONTROL LEVER CRANK REAR				1
49	SS6121210SP	SCREW 3/16-28 L=12				1
50	SS8150710SP	SCREW 15/64-28 L=7				1
51	B1624555000	REVERSE FEED CONTROL LEVER				1
52	SS8661040TP	SCREW 1/4-40 L=10				1
53	SS8660810TP	SCREW 1/4-40 L=8				1
54	RO069180100	RUBBER RING				1
55	WZ1052010KP	WAVED WASHER				1
56	B1660481000	STOPPER				1
57	B1661481000	SCREW				1
58	B1662481000	LEVER STOPPER RUBBER CAP				1
59	NS6150430SP	NUT 15/64-28				1
60	WP0621016SD	WASHER 6.2X13X1				1
61	SS8090540SP	SCREW 9/64-40 L=5				1
62	B1623555A00	FEED REGULATOR DIAL	FOR URBAN WHITE			1
63	B162455500A	REVERSE FEED CONTROL LEVER	FOR URBAN WHITE			1
64	40082080	FEED DRIVING ROCKER HINGE PIN	SELECTIVE PARTS			1
65	40082081	FEED DRIVING ROCKER HINGE PIN	SELECTIVE PARTS			1

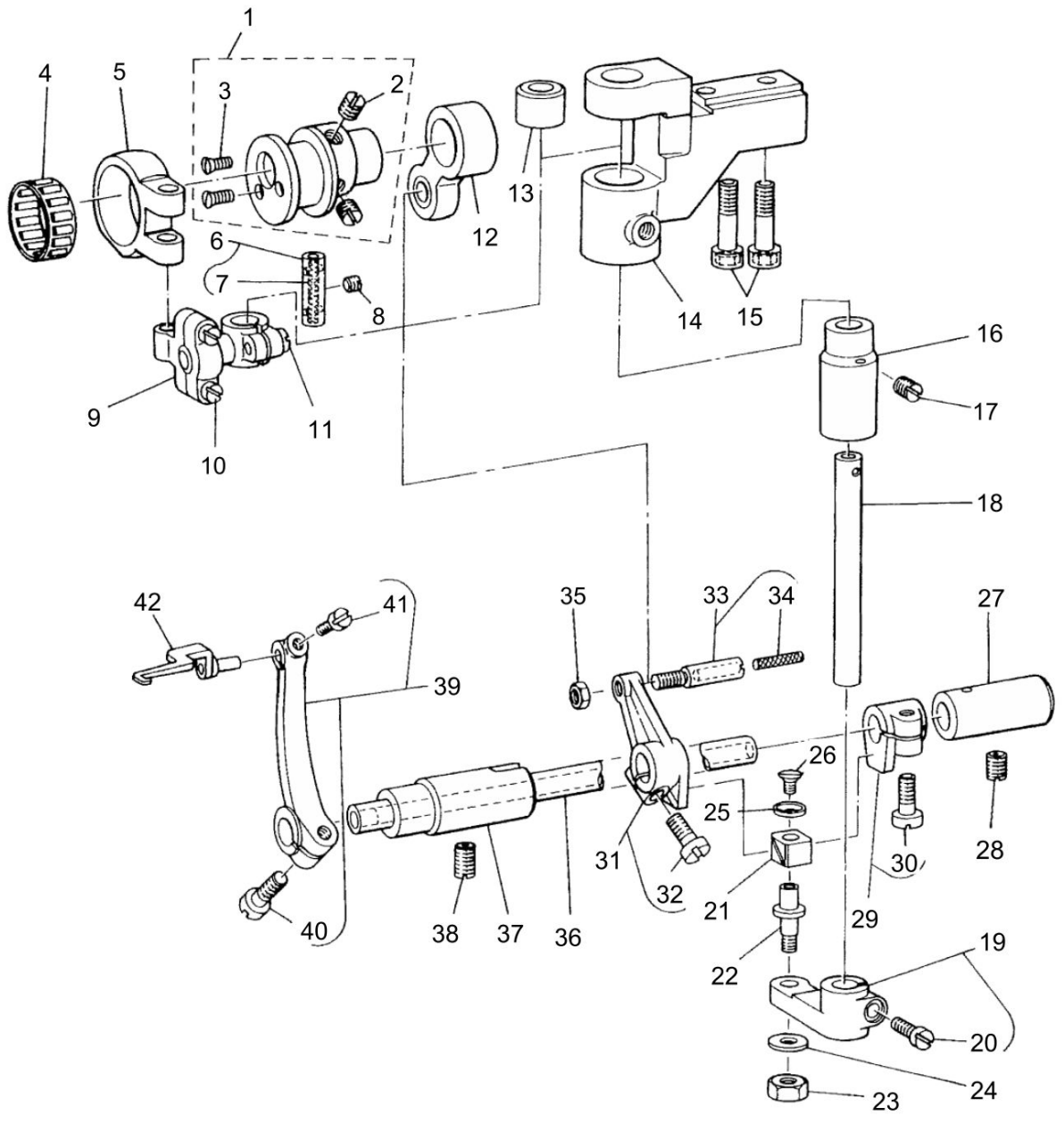
FEED MECHANISM COMPONENTS (2)



FEED MECHANISM COMPONENTS (2)

No.	Parts No.	Parts name	Remarks	Level	Cons	Qty
1	B1613481F00	FEED DOG				1
2	SS7111410TP	SCREW 11/64-40 L=14				1
3	WP0480856SP	WASHER 4.8X8.4X0.8				1
4	B1602481000A	FEED BAR				1
5	B1604486000	FEED BAR SHAFT				1
6	SS1080510SP	SCREW 1/8-44 L=5				1
7	B1715481000	COUNTER-SUNK WASHER				1
8	SS6090810SP	SCREW 9/64-40 L= 7.5				2
9	B16034860A0	FEED ROCKER ASM.				1
10	SS6121840SP	SCREW 3/16-28 L=18		*		1
11	WP0480856SP	WASHER 4.8X8.4X0.8		*		1
12	NS6120310SP	NUT 3/16-28		*		1
13	CQ303000000	OIL WICK				0.3
14	40133994	FEED ROCKER SHAFT BUSHING				1
15	B1601555000	FEED ROCKER SHAFT				1
16	22904155	MAIN SHAFT THRUST COLLAR ASM.				2
17	SS8660610TP	SCREW 1/4-40 L=6		*		4
18	SS8150710SP	SCREW 15/64-28 L=7				1
19	B1702155000	BUSHING REAR				1
20	SD1020701SP	HINGE SCREW D=10.2 H=7				1
21	NS6680410SP	NUT 9/32-28				1
22	RC0150001KP	RETAINING RING 13.8				1
23	CQ303000000	OIL WICK				0.2
24	B1701481000	FEED DRIVING SHAFT				1
25	40133993	FEED ROCKER SHAFT BUSHING				1
26	B17134810A0	FEED BAR LINK ASM.				1
27	SS8110410TP	SCREW 11/64-40 L= 3.5				1
28	B41033520A0	FEED ROCKER SHAFT CRANK ASM.				1
29	SS6621220SP	SCREW 3/16-32 L=12		*		2
30	B1610430000	DIFFERENTIAL FEED ROCKER SHAFT				1
31	CQ303000000	OIL WICK				0.2
32	40133993	FEED ROCKER SHAFT BUSHING				1
33	SS8150710SP	SCREW 15/64-28 L=7				1
34	CQ303000000	OIL WICK				0.2
35	22904155	MAIN SHAFT THRUST COLLAR ASM.				1
36	SS8660610TP	SCREW 1/4-40 L=6		*		2
37	B1702155000	BUSHING REAR				1
38	SS8150710SP	SCREW 15/64-28 L=7				1
39	B17031550A0	FEED DRIVING SHAFT CRANK ASM.				1
40	SS6121610SP	SCREW 3/16-28 L=15.5		*		1
41	B1708481000	FEED DRIVING SHAFT CONNECTING				1
42	B171248100B	NEEDLE BEARING	SELECTIVE PARTS			1
43	B1613481A00	FEED DOG (1-NEEDLE)	SPECIAL ORDER PARTS			1
44	B1613481D00	FEED DOG (D)	SPECIAL ORDER PARTS			1

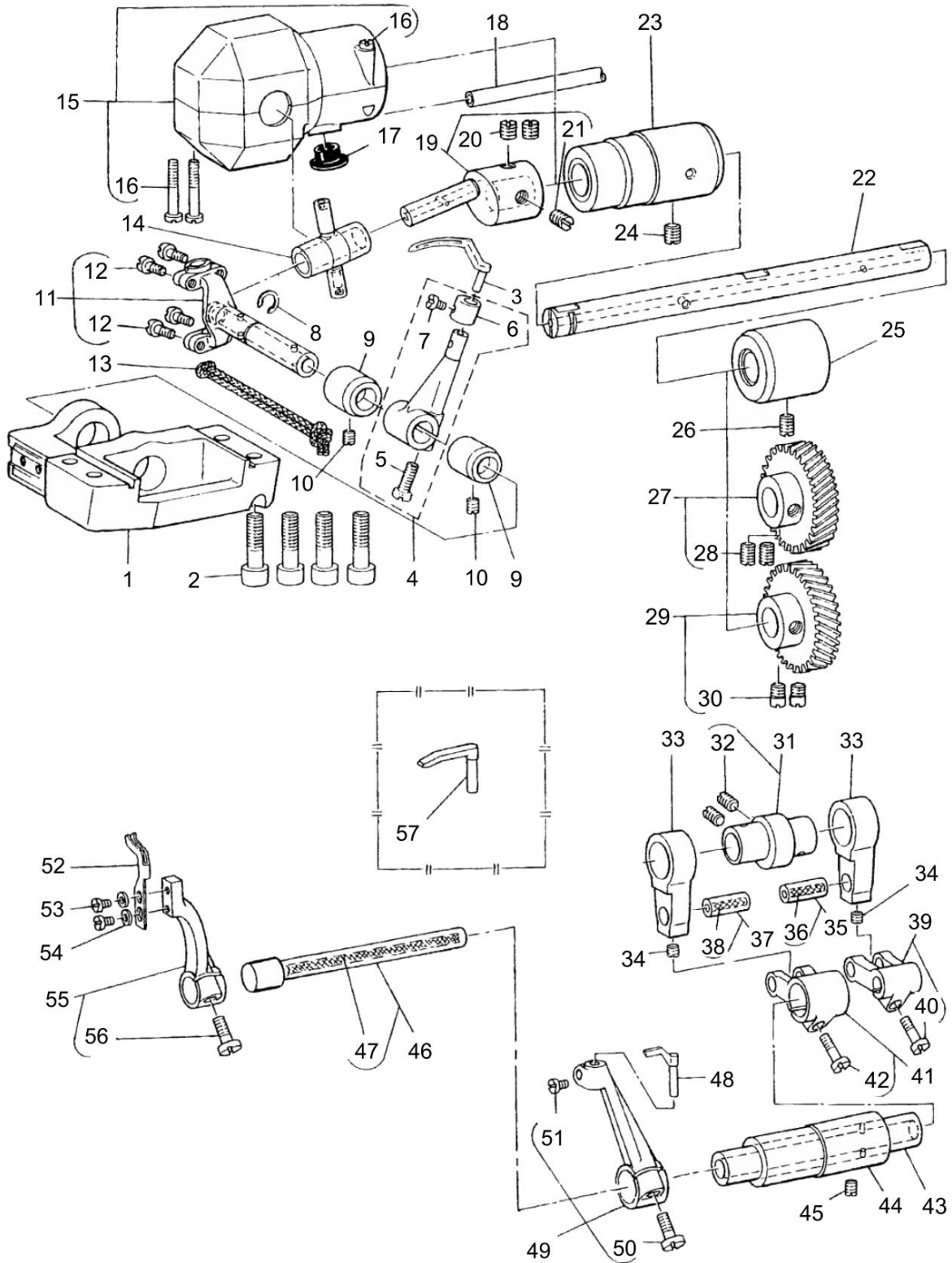
THREAD SPREADER COMPONENTS



THREAD SPREADER COMPONENTS

No.	Parts No.	Parts name	Remarks	Level	Cons	Qty
1	D2101481CA0	THREAD SPREADER ECCENTRIC ASM.				1
2	SS8150710TP	SCREW 15/64-28 L=7		*		2
3	SS2080810SP	SCREW 1/8-44 L=7.5		*		2
4	B210348100B	BEARING	SELECTIVE PARTS			1
5	B2105481000	LEFT & RIGHT DRIVING ROD A				1
6	B14033520A0	PIN ASM.				1
7	CQ202000000	OIL WICK		*		0.1
8	SS8110410TP	SCREW 11/64-40 L=3.5				1
9	B21064810A0	LEFT & RIGHT DRIVING ROD(B) ASM.				1
10	SD0450701TP	HINGE SCREW D=4.5 H=7		*		1
11	SS7111110TP	SCREW 11/64-40 L=10.5		*		1
12	B21174810A0	FORE & AFT DRIVING ROD ASM.				1
13	B2110481000A	BUSHING UPPER				1
14	B2109481000A	MOUNTING BASE				1
15	SM6062002TP	SCREW M6 L=20				2
16	B2111481000A	BUSHING LOWER				1
17	SS8150710SP	SCREW 15/64-28 L=7				1
18	B2108481000	LEFT & RIGHT DRIVING SHAFT				1
19	B21124810A0	SLIDE BLOCK BRACKET				1
20	SS7111110TP	SCREW 11/64-40 L=10.5		*		1
21	B1414232000	SQUARE BLOCK				1
22	B1827232000	SLIDE ROLLER STUD				1
23	NS6120310SP	NUT 3/16-28				1
24	WP0501016SD	WASHER 5X10.5X1				1
25	B1715481000	COUNTER-SUNK WASHER				1
26	SS1080510SP	SCREW 1/8-44 L=5				1
27	B2124481000	BUSHING REAR				1
28	SS8150710SP	SCREW 15/64-28 L=7				1
29	B21154810A0	SLIDE BLOCK ASM.				1
30	SS6121220TP	SCREW 3/16-28 L=11.5		*		1
31	B21204810A0	FORE & AFT DRIVING ARM ASM.				1
32	SS6121220TP	SCREW 3/16-28 L=11.5		*		1
33	B21194810A0	PIN				1
34	CQ202000000	OIL WICK		*		0.1
35	NS6120310SP	NUT 3/16-28				1
36	B2122481000	THREAD SPREADER DRIVING SHAFT				1
37	B2123481000	BUSHING FRONT				1
38	SS8150710SP	SCREW 15/64-28 L=7				1
39	B21254810A0	THREAD SPREADER DRIVING ARM ASM.				1
40	SS6121220TP	SCREW 3/16-28 L=11.5		*		1
41	SS7090520TP	SCREW 9/64-40 L=4.5		*		1
42	D2126481CA0	THREAD SPREADER ASM.				1

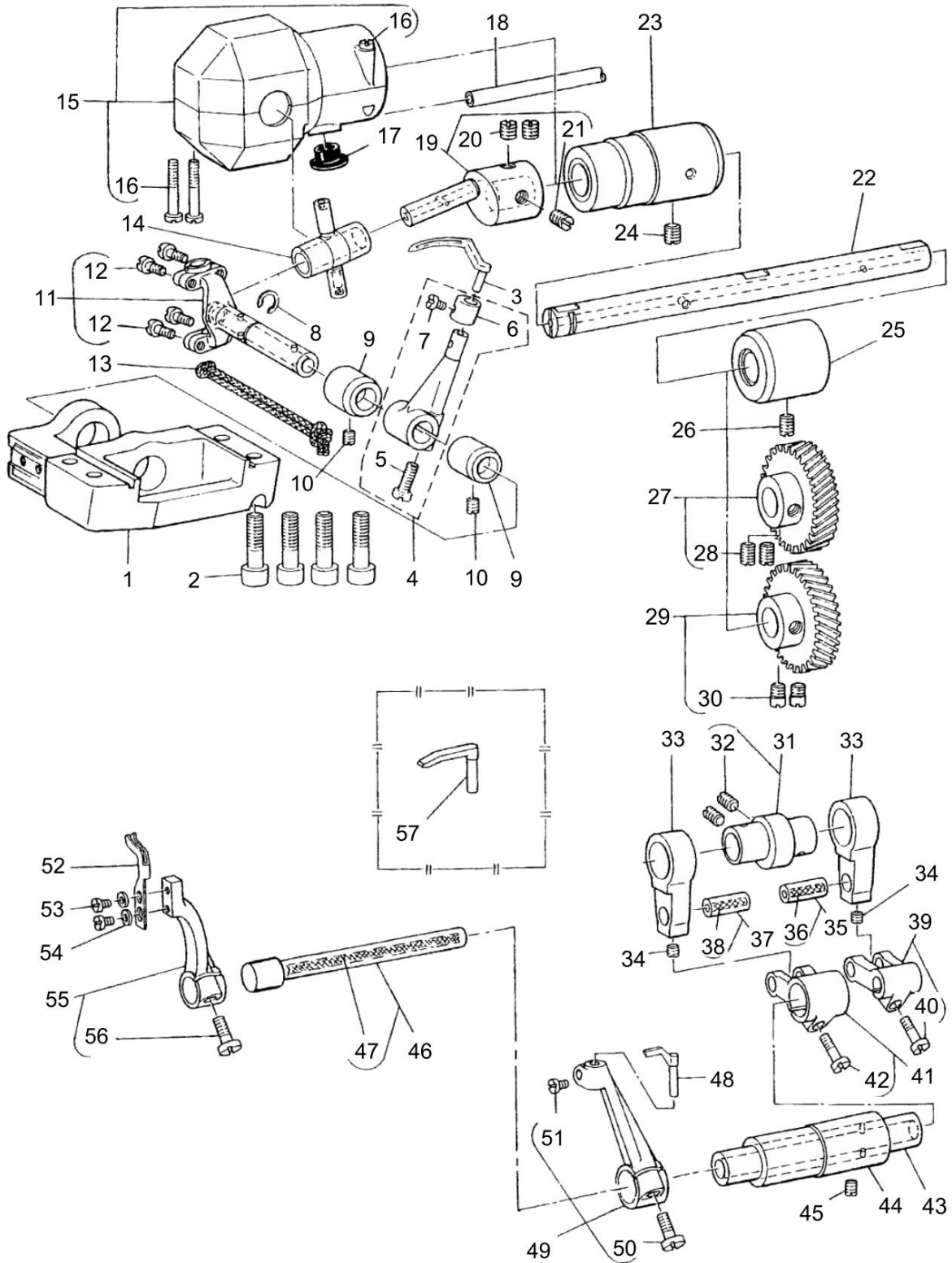
LOOPER & NEEDLE GUARD COMPONENTS



LOOPER & NEEDLE GUARD COMPONENTS

No.	Parts No.	Parts name	Remarks	Level	Cons	Qty
1	D2013481C00	LOOPER MOUNTING BASE				1
2	SM6062002TP	SCREW M6 L=20				4
3	B2030481000	LOOPER				1
4	B20154810A0	LOOPER ROCKER ASM.				1
5	SS6121220TP	SCREW 3/16-28 L=11.5		*		1
6	B2025481000	COLLAR		*		1
7	SS7090520TP	SCREW 9/64-40 L=4.5		*		1
8	B2032481000	LOOPER DRIVING LINK SET RING				1
9	B2012481000	BUSHING REAR				2
10	SS8110410TP	SCREW 11/64-40 L=3.5				2
11	B20104810A0	LOOPER ROCKER SHAFT ASM.				1
12	SS7090910TP	SCREW 9/64-40 L=8.5		*		4
13	CQ252000000	OIL WICK				0.2
14	B2008481000	TRUNNION				1
15	B20144810A0	LOOPER CRANK COVER ASM.				1
16	SS6092120SP	SCREW 9/64-40 L=21.2		*		3
17	TA1050504R0	RUBBER PLUG				1
18	BT0500300EA	OIL TUBE				0.1
19	B20064810A0	LOOPER CRANK(WITH SCREW)				1
20	SS8660810TP	SCREW 1/4-40 L=8		*		2
21	B2007481000	LOOPER CRANK ADJUSTING SCREW		*		1
22	B2001481000A	LOOPER CRANK DRIVING SHAFT				1
23	B2002481000	BUSHING FRONT				1
24	SS8150710SP	SCREW 15/64-28 L=7				1
25	B1803481000	BUSHING INTERMEDIATE				1
26	SS8150710SP	SCREW 15/64-28 L=7				1
27	B20044810A0	GEAR UPPER				1
28	SS8660810TP	SCREW 1/4-40 L=8		*		2
29	B20054810AB	GEAR LOWER	SELECTIVE PARTS			1
30	SS6660610TP	SCREW 1/4-40 L=6		*		2
31	B23014810A0	NEEDLE GUARD CAM				1
32	SS8150710TP	SCREW 15/64-28 L=7		*		2
33	B2302481000	NEEDLE GUARD CRANK ROD				2
34	SS8110410TP	SCREW 11/64-40 L=3.5				2
35	B16104300A0	PIN ASM.				1
36	CQ303000000	OIL WICK		*		0.1
37	B16104300A0	PIN ASM.				1
38	CQ303000000	OIL WICK		*		0.1
39	B23034810A0	LOOP GUIDE ROCKER FORK				1
40	SS7111310TP	SCREW 11/64-40 L=12.8		*		1
41	B23044810A0	REAR NEEDLE GUARD ROCKER FORK				1
42	SS7111310TP	SCREW 11/64-40 L=12.8		*		1
43	B2306481000	NEEDLE GUARD DRIVING SHAFT				1
44	B2307481000	BUSHING				1
45	SS8150710SP	SCREW 15/64-28 L=7				1
46	B23054810A0	LOOP GUIDE DRIVING SHAFT ASM.				1
47	CQ252000000	OIL WICK		*		0.2

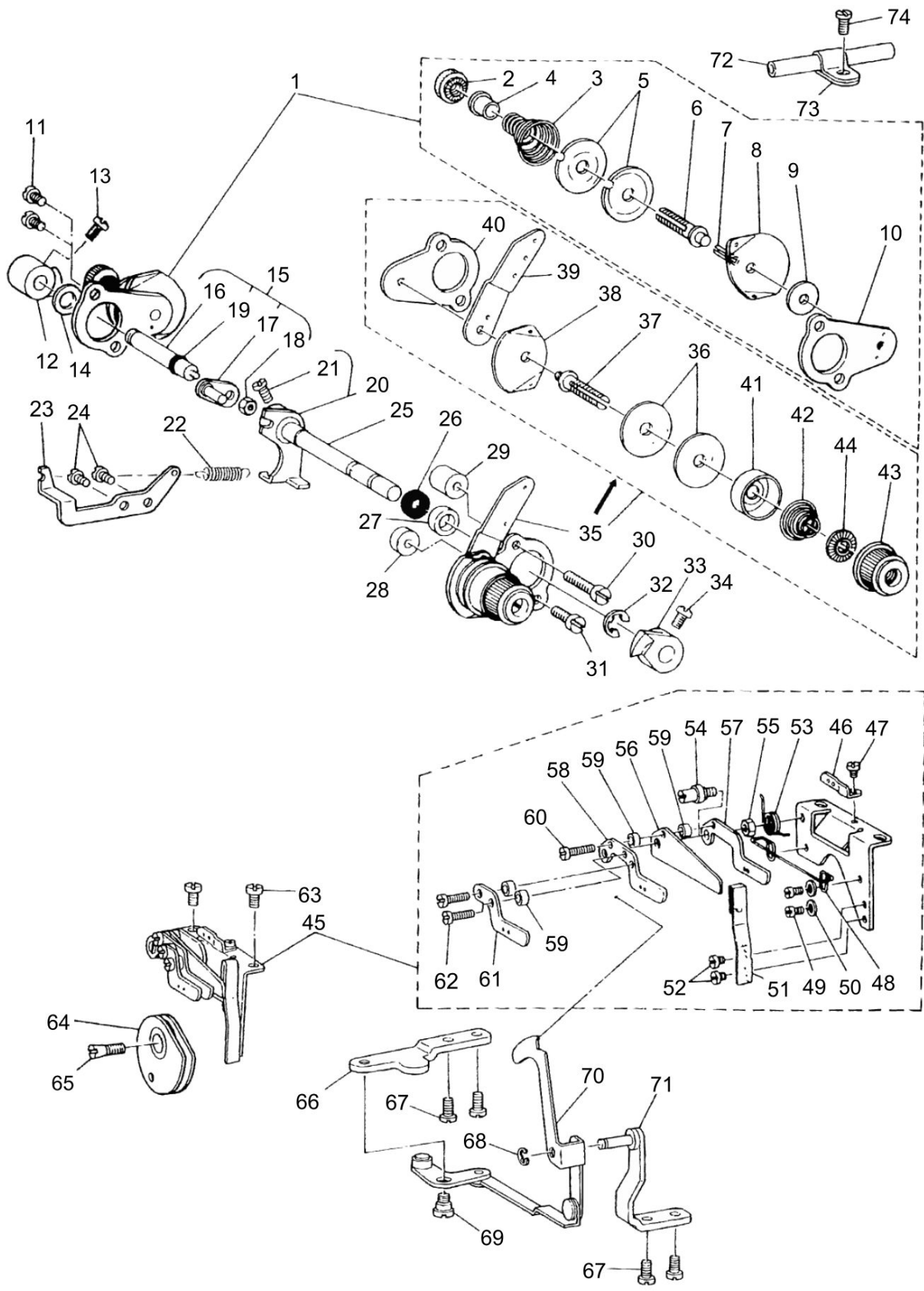
LOOPER & NEEDLE GUARD COMPONENTS



LOOPER & NEEDLE GUARD COMPONENTS

No.	Parts No.	Parts name	Remarks	Level	Cons	Qty
48	B2311481000A	NEEDLE GUARD				1
49	B23094810A0	REARNEEDLEGUARDROCKERARMASM.				1
50	SS6121220TP	SCREW 3/16-28 L=11.5		*		1
51	SS7090910TP	SCREW 9/64-40 L=8.5		*		1
52	B2310481000	LOOP GUIDE				1
53	SS7090520TP	SCREW 9/64-40 L=4.5				2
54	WP0371026SD	WASHER 3.7X7X1				2
55	B23084810A0	LOOP GUIDE ROCKER ARM				1
56	SS6121220TP	SCREW 3/16-28 L=11.5		*		1
57	B2312481000	NEEDLE GUARD	SPECIAL ORDER PARTS			1

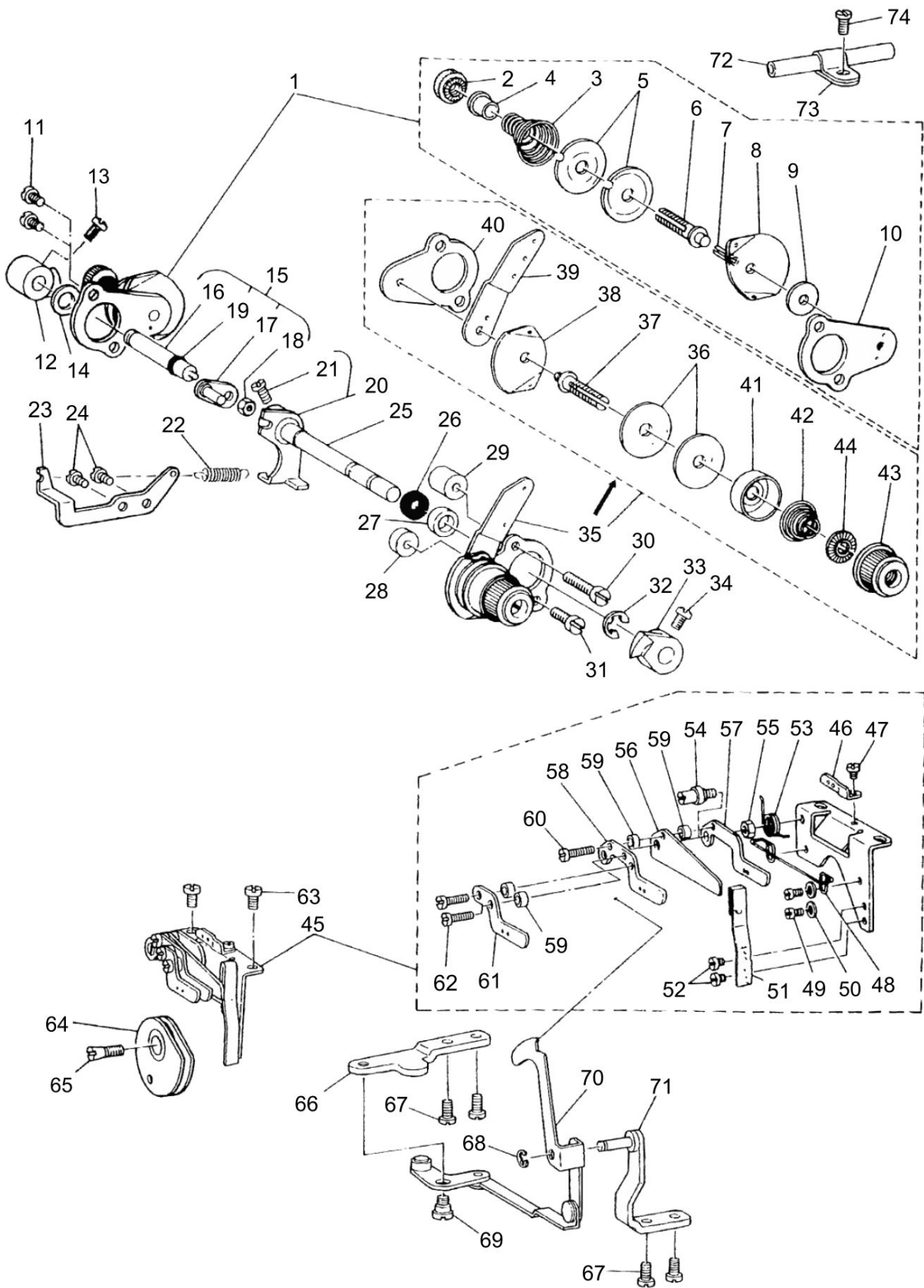
THREAD TENSION CONTROLLER COMPONENTS



THREAD TENSION CONTROLLER COMPONENTS

No.	Parts No.	Parts name	Remarks	Level	Cons	Qty
1	D3103481DA0	LOOPER THREAD TENSION ASM.				1
2	11072204	TENSION NUT		*		1
3	B3106481000	LOOPER THREAD TENSION SPRING		*		1
4	B3120125000	ROTATING STOPPER		*		1
5	B3126352000	TENSION DISC		*		2
6	B3104481000	LOOPER THREAD TENSION POST		*		1
7	PS0200102KH	SPRING PIN 2.0X10		*		1
8	B3106380000	THREAD GUIDE		*		1
9	WP0851216SC	WASHER 8.5X18.0X1.2		*		1
10	B3101481000	TENSION CONTROLLER INSTALLING		*		1
11	SS4110715SP	SCREW 11/64-40 L=7				2
12	B3121481000	LOOPER THREAD TENSION RELEASE				1
13	SS6110420TP	SCREW 11/64-40 L=4.8				1
14	WP0740516SP	WASHER 7.4X11.8X0.5				1
15	D3135481CB0	LOOPER THREAD RELEASE SHAFT ASM.				1
16	D3135481C00A	LOOPER THREAD RELEASE SHAFT		*		1
17	D3136481CA0	TENSION RELEASE ARM ASM.		*		1
18	NS6110310SP	NUT 11/64-40		*		1
19	RO037180100	RUBBER RING		*		1
20	D3130481CA0	TENSION RELEASE ARM ASM.				1
21	SS6110710TP	SCREW 11/64-40 L= 6.5		*		1
22	D3134481C00	SPRING				1
23	D3133481C00	SUSPENSION BRACKET				1
24	SS4110715SP	SCREW 11/64-40 L=7				2
25	D3110481C00	TENSION RELEASE SHAFT				1
26	B1522552000	OIL SEAL RING				1
27	B3115481000	TENSION RELEASE SHAFT SPACER				1
28	B3116481000	SPACER(A) FOR INSTALLING PLATE				1
29	B3117481000	SPACER(B) FOR INSTALLING PLATE				1
30	SS4112515SP	SCREW 11/64-40 L=25				1
31	SS4111415SP	SCREW 11/64-40 L=14				1
32	RE0600000K0	E-RING 6				1
33	B3120481000	NEEDLE THREAD TENSION RELEASE				1
34	SS6110420TP	SCREW 11/64-40 L=4.8				1
35	B31024810A0	NEEDLE THREAD TENSION ASM.				1
36	B3126012000	THREAD TENSION DISK		*		2
37	B3104481000	LOOPER THREAD TENSION POST		*		1
38	B2306019000	TENSION THREAD GUIDE		*		1
39	B3102481000	NEEDLE THREAD TENSION GUIDE PLATE		*		1
40	B3101481000	TENSION CONTROLLER INSTALLING		*		1
41	B3107704000	TENSION DISC PRESSER TUBE		*		1
42	B3129012A00	TENSION SPRING		*		1
43	B3119771000	THREAD TENSION NUT		*		1
44	B3120125000	ROTATING STOPPER		*		1
45	D2210481DA0	LOOPER THREAD GUIDE ASM.				1
46	B2203481000	LOOPER THREAD GUIDE(B)		*		1
47	SS6080320SP	SCREW 1/8-44 L=2.5		*		1

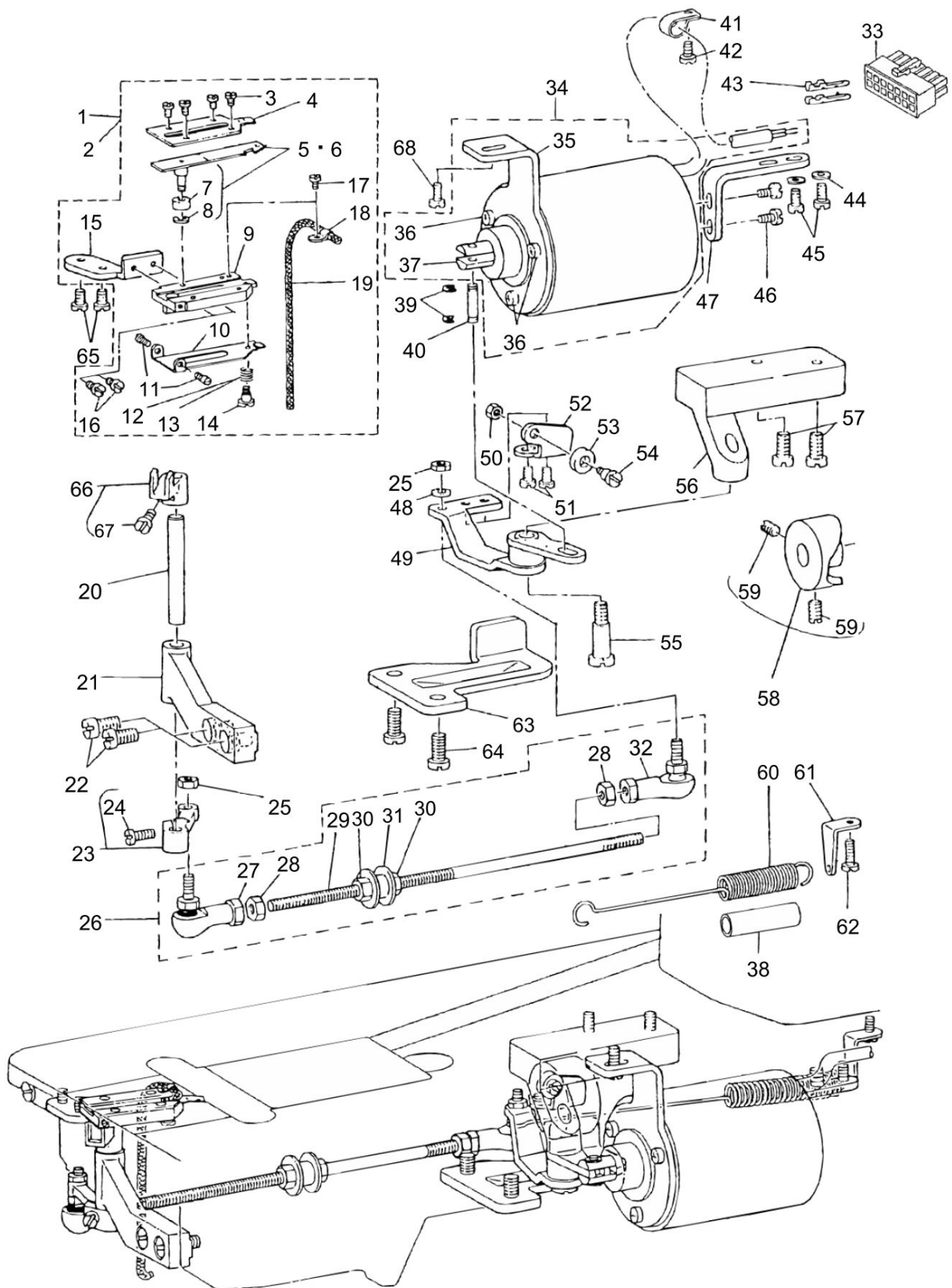
THREAD TENSION CONTROLLER COMPONENTS



THREAD TENSION CONTROLLER COMPONENTS

No.	Parts No.	Parts name	Remarks	Level	Cons	Qty
48	B2218481000	CAST-OFF WIRE		*		1
49	SS6080410SP	SCREW 1/8-44 L=4		*		2
50	WP0371026SD	WASHER 3.7X7X1		*		2
51	B2217481000	THREAD GUIDE STOPPER SPRING		*		1
52	SS6080320SP	SCREW 1/8-44 L=2.5		*		2
53	B2216481000	THREAD GUIDE SPRING		*		1
54	B2214481000	THREAD GUIDE STUD		*		1
55	NS6110310SP	NUT 11/64-40		*		1
56	D2213481C00	CAST-OFF PLATE		*		1
57	B2212481000	LOOPER THREAD GUIDE RIGHT		*		1
58	D2211481D00	LOOPER THREAD GUIDE LEFT		*		1
59	B2215481000	COLLAR		*		4
60	SS7081310SP	SCREW 1/8-44 L=12.5		*		1
61	D2227481D00	LOOPER THREAD GUIDE		*		1
62	SS4080620TP	SCREW 1/8-44 L=6		*		2
63	SS4110515SP	SCREW 11/64-40 L=5				2
64	B2220481010	LOOPER THREAD TAKE-UP ASM.				1
65	B2225481000	SCREW				1
66	D3931481D00	ARM INSTALLING PLATE				1
67	SS4110715SP	SCREW 11/64-40 L=7				4
68	RE0400000K0	E-RING 4				1
69	SD0640211SP	HINGE SCREW D=6.35 H=2.1				1
70	D3928481DA0	THREAD TENSION RELEASE ASM.				1
71	D3929481DA0	RELEASE LEVER INSTALLING ASM.				1
72	D3105481D00	LOOPER THREAD GUIDE				1
73	D2120555C00	CORD PRESSER (120V)				1
74	SS4110715SP	SCREW 11/64-40 L=7				1

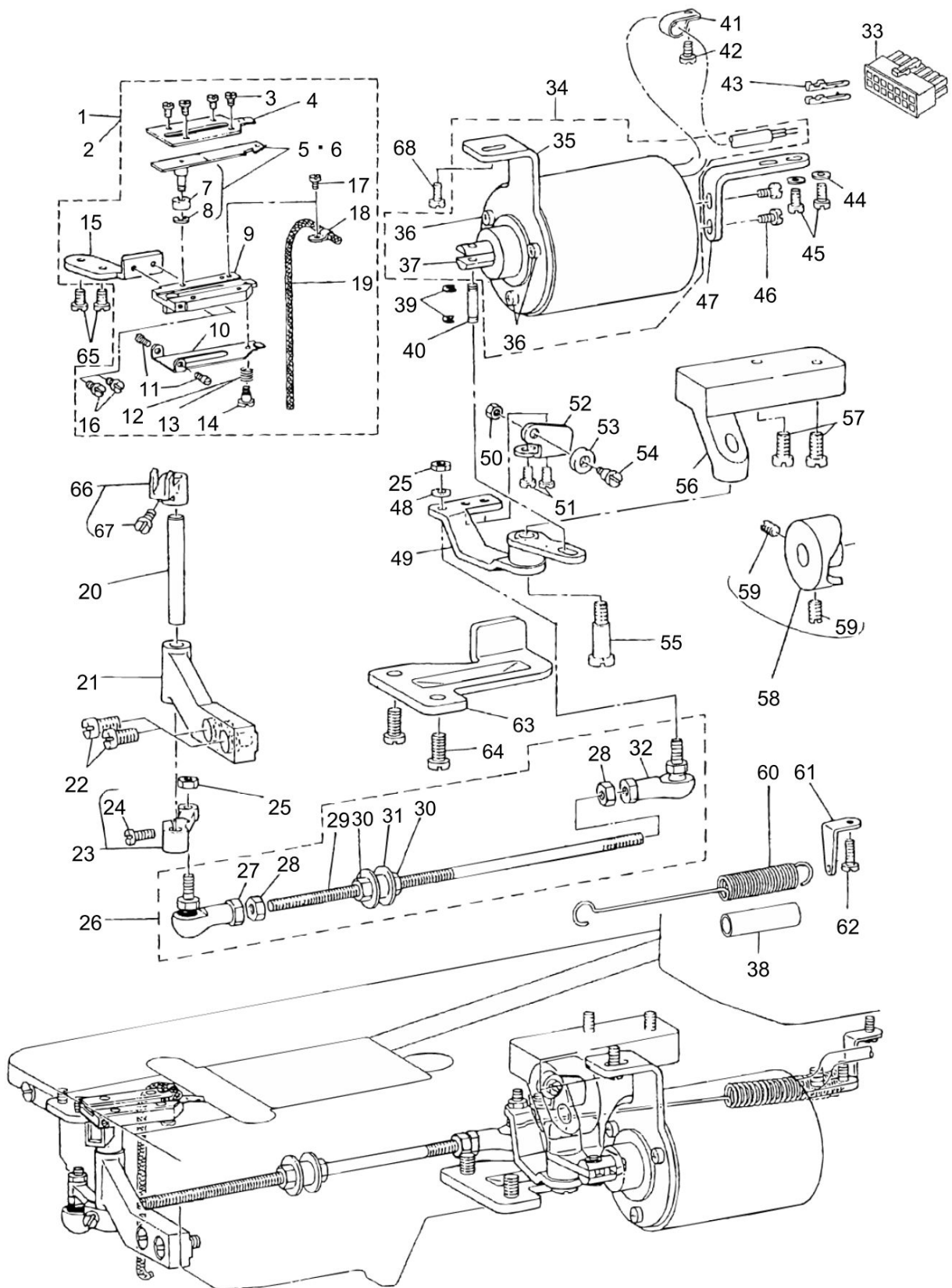
THREAD TRIMMER COMPONENTS



THREAD TRIMMER COMPONENTS

No.	Parts No.	Parts name	Remarks	Level	Cons	Qty
1	D2407481DBA	MOVING KNIFE MOUNTING PLATE ASM.				1
2	D2407481DBB	MOVING KNIFE BASE ASM.	SPECIAL ORDER PART (FOR THICK THREAD)			1
3	SS6090420SP	SCREW 9/64-40 L=4.0		*		4
4	D2405481C00A	COUNTER KNIFE		*		1
5	D2401481CD0	MOVING KNIFE ASM.		*		1
6	D2401481CDB	COUNTER KNIFE ASM.	SPECIAL ORDER PART (FOR THICK THREAD)	*		1
7	D2403481C00	COLLAR		*		1
8	RE0250000K0	E-RING 2.5		*		1
9	D2407481D00	MOUNTING PLATE		*		1
10	D2406481D00	THREAD CLAMPING		*		1
11	D2409481D00	CLAMPING STOPPER PIN		*		2
12	D2404481D0A	THREAD CLAMPING SPRING		*		1
13	D2404481D0B	THREAD CLAMPING SPRING B	SPECIAL ORDER PART (FOR THICK THREAD)	*		1
14	SD0360601SP	CLAMPING SCREW		*		1
15	D2408481C00A	MOUNTING PLATE INSTALLING BASE		*		1
16	SS6090510TP	SCREW 9/64-40 L=5.0		*		2
17	SS5060310SP	SCREW 3/32-56 L=2.8		*		1
18	D2410481C00A	OIL WICK HOLDER		*		1
19	CQ202000000	OIL WICK		*		0.2
20	D2413481C00	KNIFE DRIVING SHAFT				1
21	D2412481C00	MOVING KNIFE BUSHING PIN				1
22	SS6151920SP	SCREW 15/64-28 L=19.0				2
23	D2414481CA0	KNIFE DRIVING ARM ASM.				1
24	SS7111110TP	SCREW 11/64-40 L=10.5		*		1
25	NM6050001SP	NUT M5				2
26	D2415481DA0A	THREAD-CUTTING BALL JOINT ASM.				1
27	D2415481D00	KNIFE DRIVING ARM JOINT		*		1
28	NM6050001SP	NUT M5		*		2
29	D2416481C00	CONNECTING ROD		*		1
30	NM6050001SP	NUT M5		*		2
31	D3921481D00	CAM THREAD RELEASE BLOCK		*		1
32	D2415481C00	KNIFE DRIVING ARM JOINT		*		1
33	HK034610140	HOUSING 14P				1
34	D2460481DAB	SOLENOID ASM.				1
35	D2466481C00	SOLENOID INSTALLING PLATE		*		1
36	SS7110740TP	SCREW 11/64-40 L=7		*		3
37	D2465481C00	PLUNGER		*		1
38	BT0800602E0	URETHANE TUBE 6X8 TRANSPARENT				0.12
39	RE0400000K0	E-RING 4				2
40	D2461481C00	CONNECTING PIN				1
41	G5066110000	CORD HOLDER				1
42	SS7110910SP	SCREW 11/64-40 L=8.5				1
43	HK03464000B	PIN CONTACT	FOR MH-481-5			2
44	WP0480856SP	WASHER 4.8X8.4X0.8				2
45	SS7111120SP	SCREW 11/64-40 L=10.5				2
46	SS7110740TP	SCREW 11/64-40 L=7				2

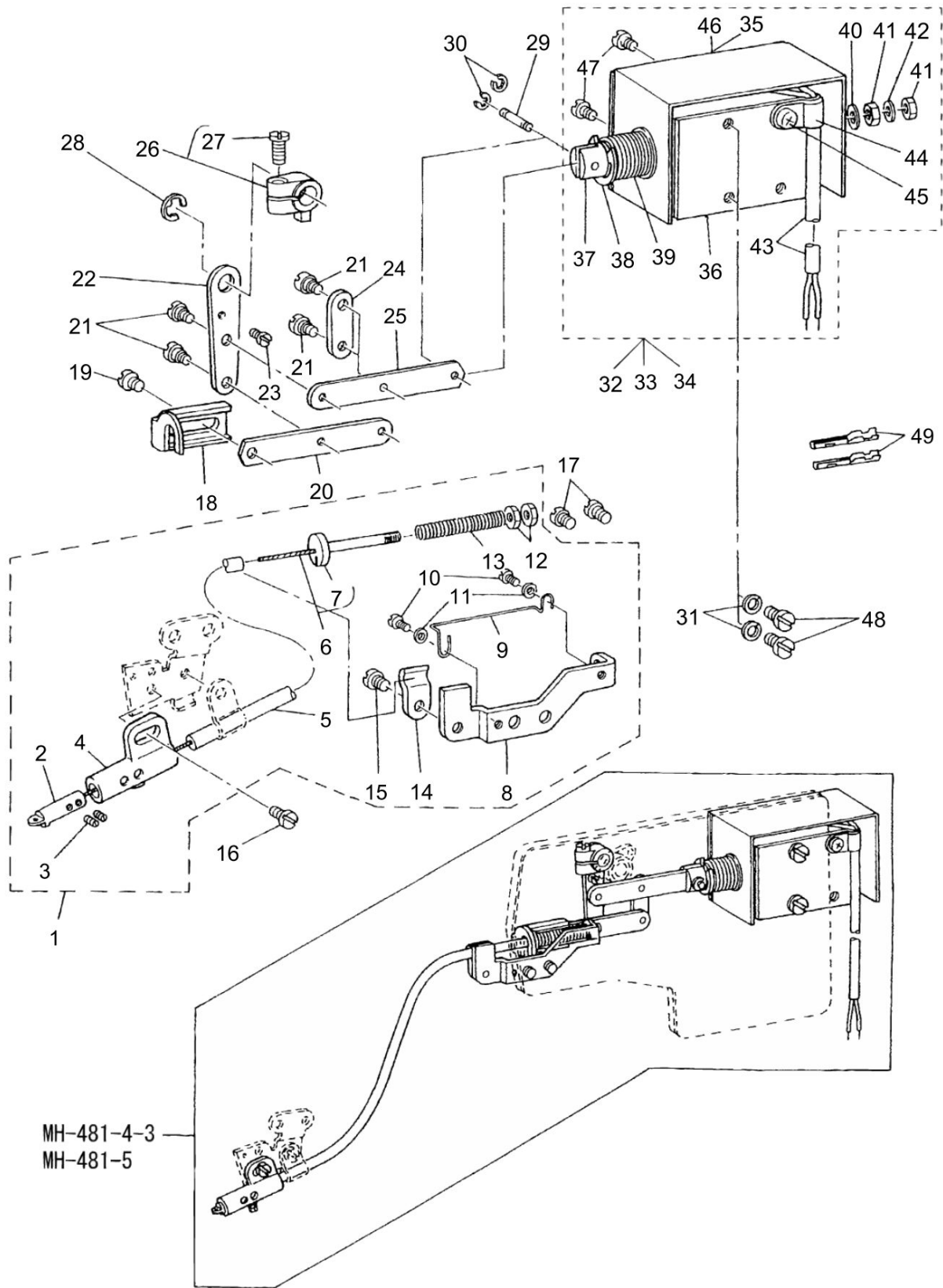
THREAD TRIMMER COMPONENTS



THREAD TRIMMER COMPONENTS

No.	Parts No.	Parts name	Remarks	Level	Cons	Qty
47	D2462481C00	SOLENOID HOLDER				1
48	WP0501016SD	WASHER 5X10.5X1				1
49	D2421481CA0	THREAD TRIMMER LEVER ASM.				1
50	NS6120310SP	NUT 3/16-28				1
51	SS5110810SP	SCREW 11/64-40 L=8				2
52	D2429481C00	ROLLER INSTALLING PLATE				1
53	D2430481C00	ROLLER				1
54	SD0600452TP	HINGE SCREW D=6 H=4.5				1
55	SD0791501SP	HINGE SCREW D=7.94 H=15.0				1
56	D2426481C00	THREAD TRIMMER LEVER MOUNTING				1
57	SS6151412TP	SCREW 15/64-28 L=14				2
58	D2428481CA0	SAFETY CAM ASM.				1
59	SS8151150TP	SCREW 15/64-28 L=10.5		*		2
60	D2424481C00A	TENSION SPRING				1
61	D2425481C00	SUSPENSION BRACKET				1
62	SS7110710TP	SCREW 11/64-40 L=7.0				1
63	D2461486E00	THREAD TRIMMER STOPPER				1
64	SS7151210SP	SCREW 15/64-28 L=12				2
65	SS7110840SP	SCREW 11/64-40 L=7.8				2
66	D2411481CA0	KNIFE DRIVING FORK ASM.				1
67	SS7111110TP	SCREW 11/64-40 L=10.5		*		1
68	SS6151040SP	SCREW 15/64-28 L=10				1

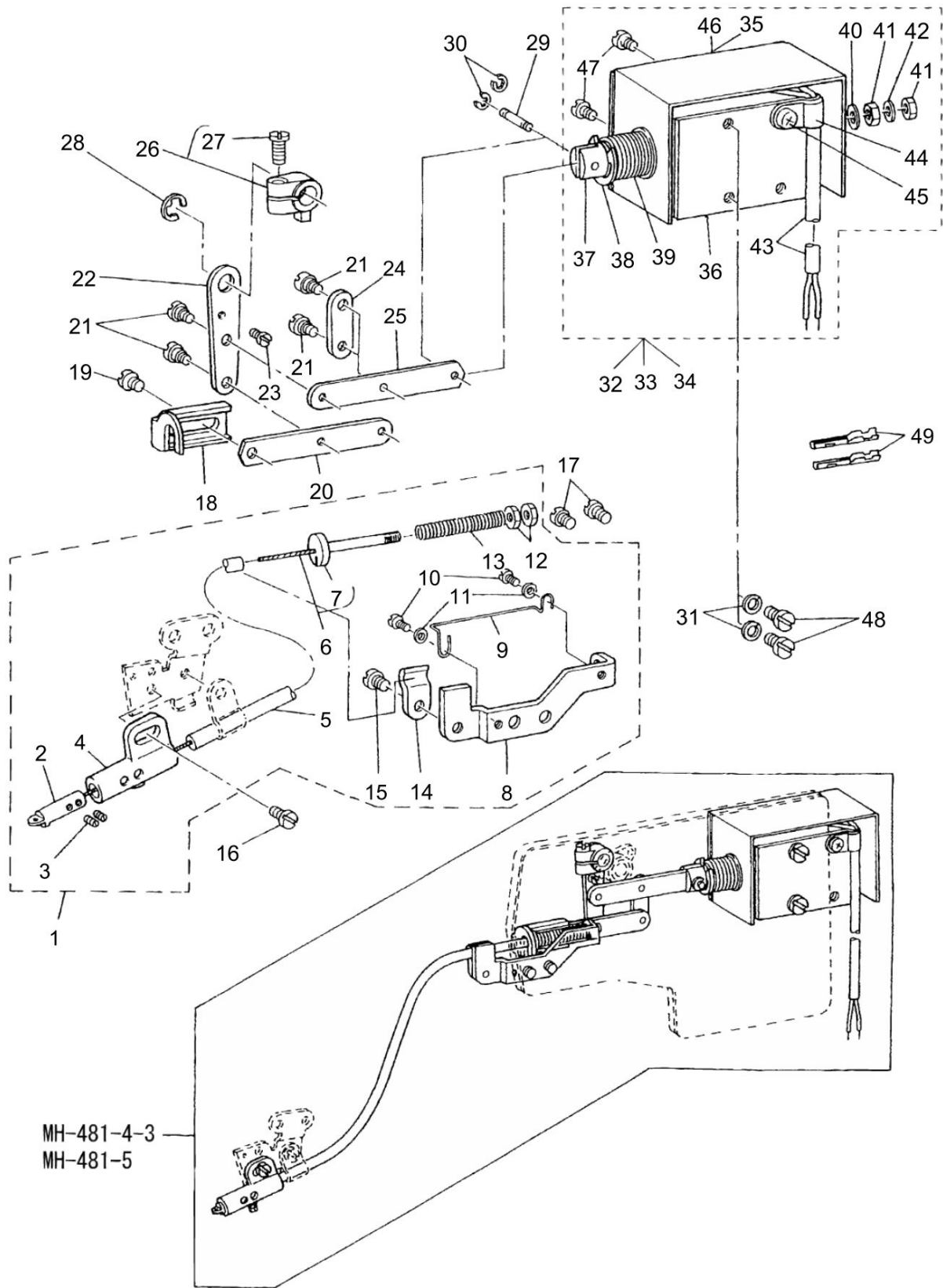
THREAD DRAW OUT SOLENOID COMPONENTS



THREAD DRAW OUT SOLENOID COMPONENTS

No.	Parts No.	Parts name	Remarks	Level	Cons	Qty
1	D3911481CA0	THREAD DRAW OUT WIRE ASM.				1
2	D3918481D00	THREAD GUIDE PIN		*		1
3	SS8080310TP	SCREW 1/8-44 L=2.8		*		2
4	D3917481D00	GUIDE PIN HOLDER		*		1
5	D3913481D00	WIRE TUBE		*		1
6	D3912481CA0	THREAD DRAW OUT WIRE ASM.		*		1
7	D3914481C00	WIRE HOLDER		*		1
8	D3911481C00	WIRE MOUNTING PLATE		*		1
9	D3919481D00	WIRE GUIDE		*		2
10	SS4080415SP	SCREW 1/8-44 L=4		*		2
11	WP0371026SD	WASHER 3.7X7X1		*		2
12	NS6090310SP	NUT 9/64-40		*		2
13	D3915481C00	SPRING		*		1
14	D3916481C00	TUBE HOLDER		*		1
15	SS4110515SP	SCREW 11/64-40 L=5		*		1
16	SS4110515SP	SCREW 11/64-40 L=5				1
17	SS7110510SP	SCREW 11/64-40 L=5				2
18	D3910481C00	WIRE DRAWING LINK				1
19	SS4110515SP	SCREW 11/64-40 L=5				1
20	D3908481C00	LINK B				1
21	SD0450211SP	HINGE SCREW D=4.50 H=2.1				4
22	D3906481C00	THREAD DRAW OUT LEVER				1
23	SS7090410SP	SCREW 9/64-40 L= 3.5				1
24	D3909481C00	LINK CONNECTING PLATE				1
25	D3905481C00	LINK A				1
26	D3907481CA0	THREAD DRAW OUT ARM ASM.				1
27	SS7111110TP	SCREW 11/64-40 L=10.5		*		1
28	RE0600000K0	E-RING 6				1
29	D3904481E00	PLUNGER PIN				1
30	RE0200000K0	E-RING				2
31	WS0441040KP	SPRING WASHER 4.4X7.4X1				2
32	D3901481DAB	THREAD DRAW OUT SOLENOID ASM.	FOR MH-481-4-3			1
33	D3901486EAB	THREAD DRAW OUT SOLENOID ASM.	FOR MH-481-5			1
34	D3901486DAC	THREAD DRAW OUT SOLENOID ASM.				1
35	D3903481C0A	SOLENOID COVER	FOR URBAN WHITE	*		1
36	D3901486E0B	THREAD DRAW OUT SOLENOID		*		1
37	D2118555B00A	PLUNGER		*		1
38	RE0901110K0	SNAP RING 9		*		1
39	D3902481C00A	SPRING		*		1
40	MAT80115T00	WASHER		*		1
41	NM6040003SC	NUT M4		*		2
42	WS0411002KS	SPRING WASHER 4.1X7.6X1.0		*		1
43	HW200110000	WIRE BLACK		*		1.1
44	HX00150000B	CABLE CLIP		*		1
45	SM4040601SB	SCREW M4 L=6		*		1
46	D3903481C00	SOLENOID COVER		*		1
47	SM4040601SB	SCREW M4 L=6		*		2

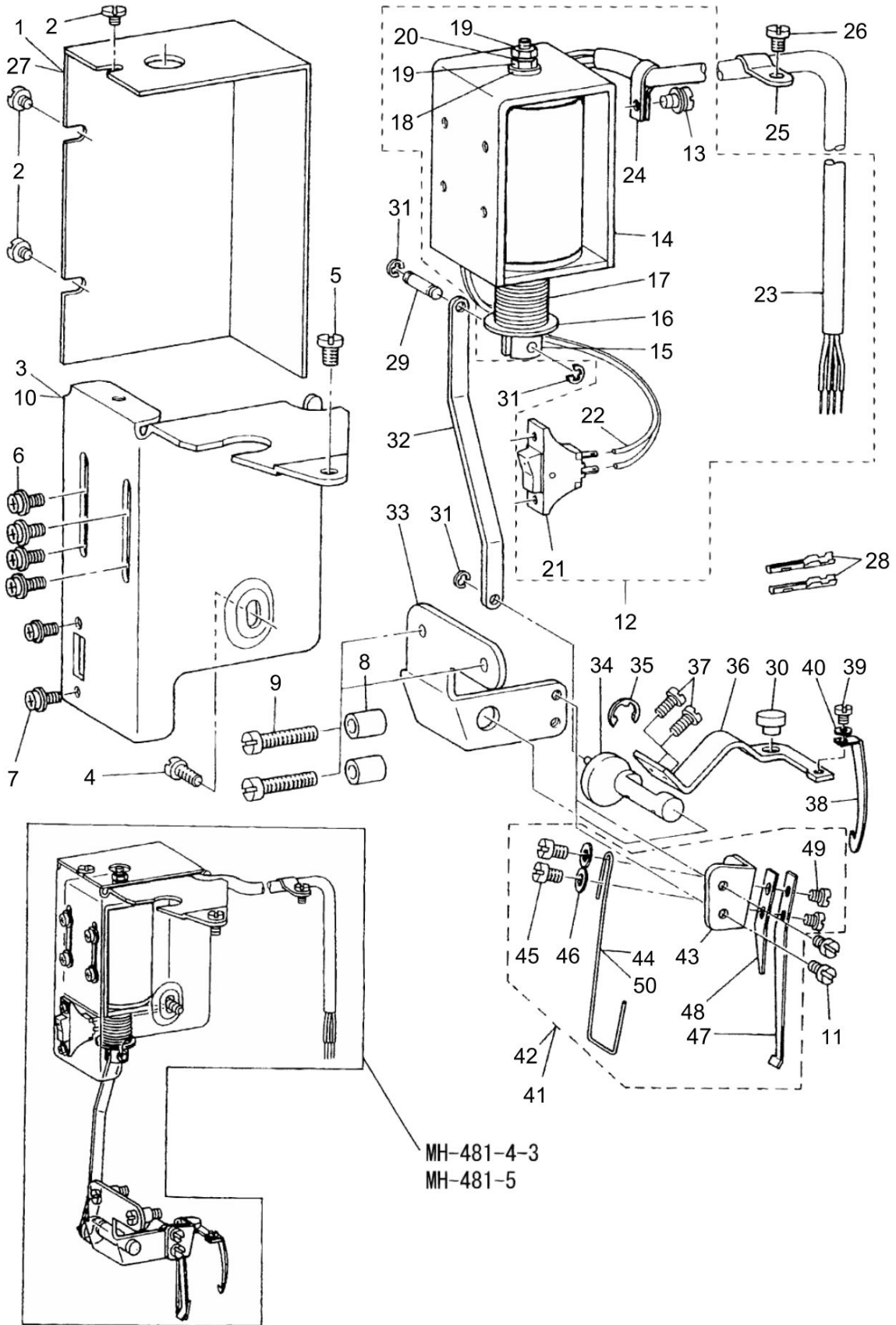
THREAD DRAW OUT SOLENOID COMPONENTS



THREAD DRAW OUT SOLENOID COMPONENTS

No.	Parts No.	Parts name	Remarks	Level	Cons	Qty
48	SM4040601SB	SCREW M4 L=6				2
49	HK03464000B	PIN CONTACT	FOR MH-481-5			2

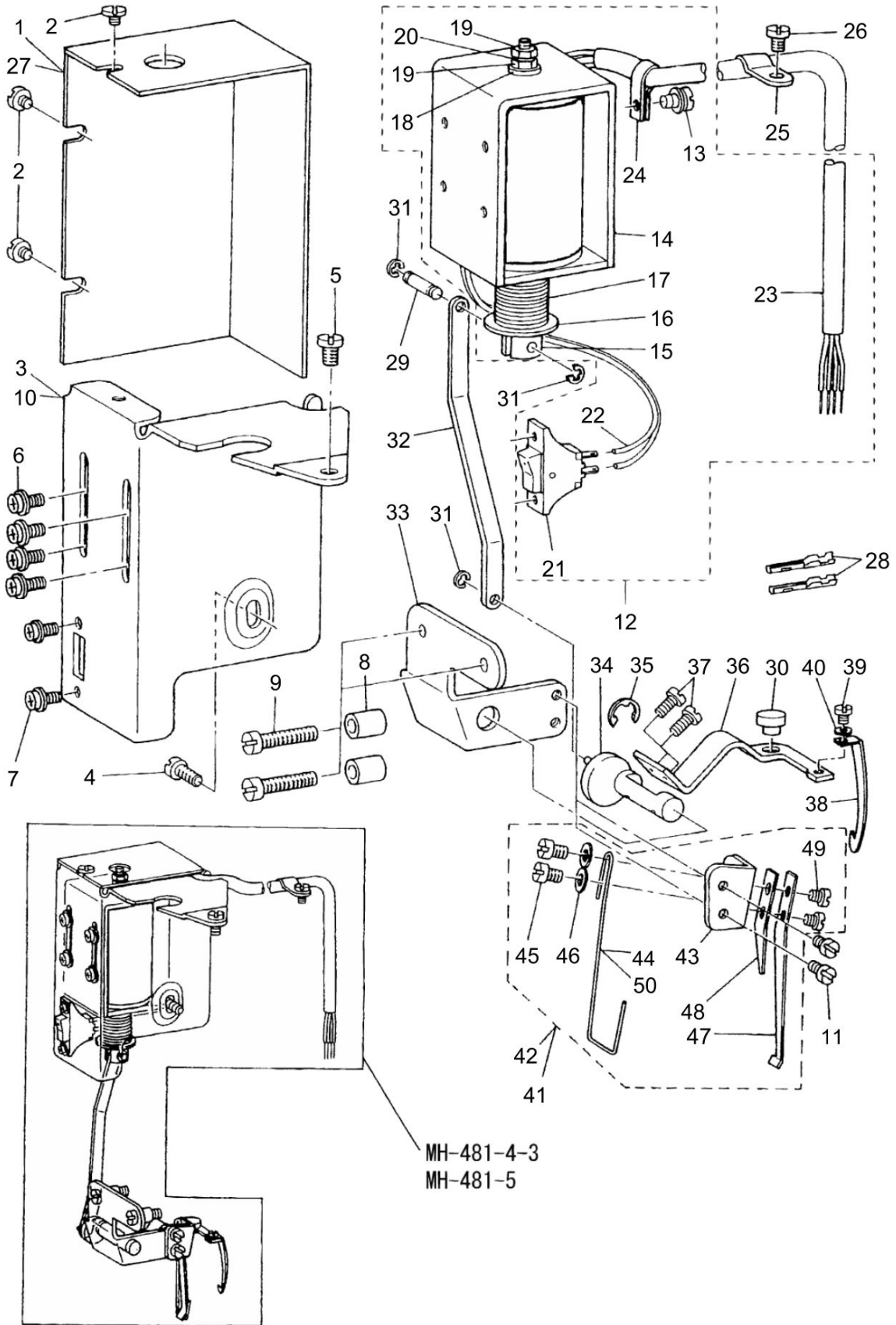
WIPER COMPONENTS



WIPER COMPONENTS

No.	Parts No.	Parts name	Remarks	Level	Cons	Qty
1	D2111555B00B	MAGNET INSTALLING BASE COVER				1
2	SS7110340SP	SCREW 11/64-40 L=3.2				3
3	D2101555C00	MAGNET INSTALLING BASE				1
4	SS7110710SP	SCREW 11/64-40 L=7				1
5	SS7110840SP	SCREW 11/64-40 L=7.8				1
6	SL4040881SF	SCREW M4 L=8				4
7	SL4030621SS	SCREW M3				2
8	D2114555B00	BRACKET INSTALLING COLLAR				2
9	SS7112420SP	SCREW 11/64-40 L=24				2
10	D2101555C0A	MAGNET INSTALLING BASE	FOR URBAN WHITE			1
11	SS7090510SP	SCREW 9/64-40 L=4.6				2
12	D3008481DAB	WIPER DRIVING SOLENOID ASM.				1
13	SL4041081SC	SCREW M4 L=10		*		1
14	D3901481D0B	SOLENOID	FOR MH-481-4-3,481-5	*		1
15	D2118555B00A	PLUNGER		*		1
16	RE0901110K0	SNAP RING 9		*		1
17	D3006481C00	SPRING		*		1
18	MAT80115T00	WASHER		*		1
19	NM6040003SC	NUT M4		*		2
20	WS0411002KS	SPRING WASHER 4.1X7.6X1.0		*		1
21	D2119555C00	SWITCH		*		1
22	HW2F18S1219	ELECTRIC WIRE WHITE		*		0.1
23	HW000600020	2-CORE CABTYRE CORD	FOR MH-481-4-3	*		2
24	HX00150000A	CABLE CLAMP		*		1
25	D2611555B00A	CABLE HOLDER				1
26	SS7110840SP	SCREW 11/64-40 L=7.8				1
27	D2111555B0A	MAGNET INSTALLING BASE COVER	FOR URBAN WHITE			1
28	HK03464000B	PIN CONTACT	FOR MH-481-5			2
29	D2107555B00	WIPER LINK SHAFT A				1
30	D3005481C00	WIPER CUSHION				1
31	RE0250000K0	E-RING 2.5				3
32	D2102555B00	CONNECTING LINK				1
33	D3001481C00A	WIPER DRIVING SHAFT BRACKET				1
34	D3002481C00A	WIPER DRIVING SHAFT				1
35	RE0500000K0	E-RING				1
36	D3004481C00A	WIPER ARM				1
37	SS7090710SP	SCREW 9/64-40 L=6.8				2
38	D3003481C00A	WIPER				1
39	SS7080410SP	SCREW 1/8-44 L=3.8				1
40	WP0371036SD	WASHER 3.7X6X1				1
41	D3010481CAB	NEEDLE THREAD CLAMP BASE ASM.	SPECIAL ORDER PARTS			1
42	D3010481DA0	NEEDLE CLAMP BASE ASM.				1
43	D3010481C00	NEEDLE CLAMP BASE		*		1
44	D3011481D00	THREAD CLAMP		*		1
45	SS6080410SP	SCREW 1/8-44 L=4		*		2
46	WP0371026SD	WASHER 3.7X7X1		*		2
47	D3012481D00	SPRING A		*		1

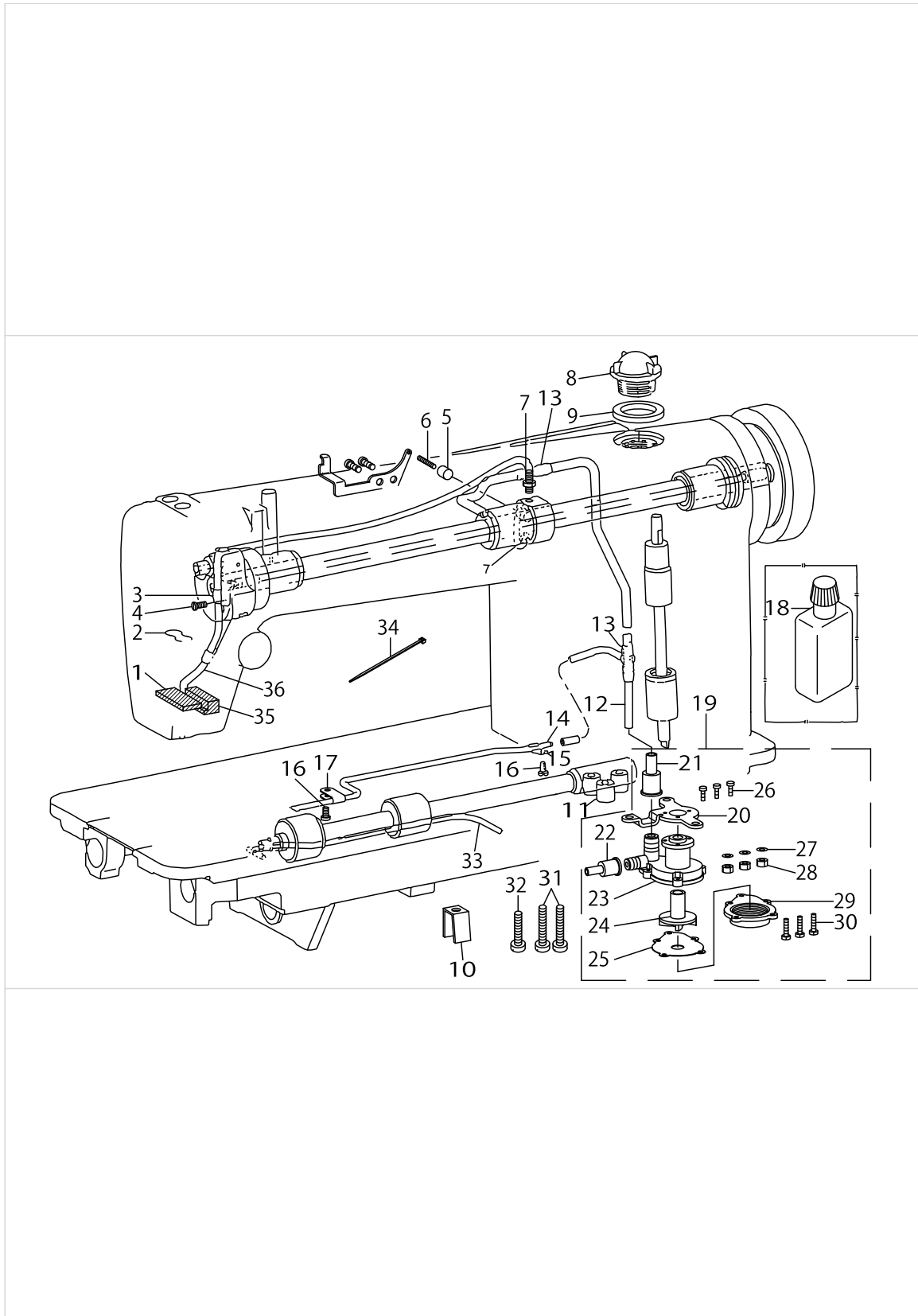
WIPER COMPONENTS



WIPER COMPONENTS

No.	Parts No.	Parts name	Remarks	Level	Cons	Qty
48	D3013481D00	SPRING B		*		1
49	SS6080320SP	SCREW 1/8-44 L=2.5		*		2
50	D3011481C0B	THREAD CLAMP	SPECIAL ORDER PARTS	*		1

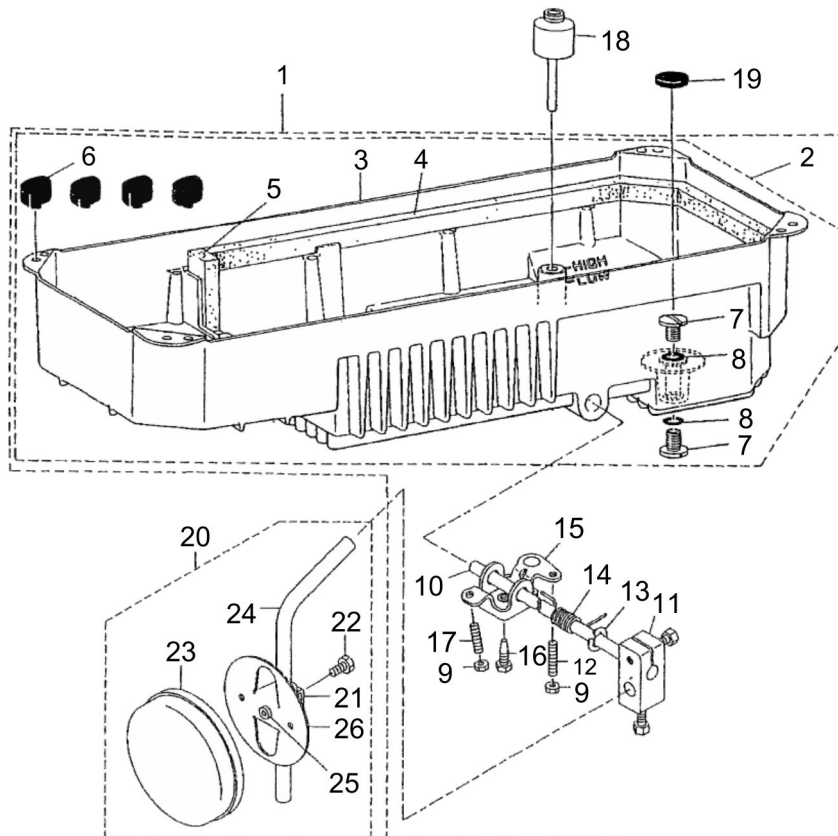
OIL LUBRICATION MECHANISM COMPONENTS



OIL LUBRICATION MECHANISM COMPONENTS

No.	Parts No.	Parts name	Remarks	Level	Cons	Qty
1	B3528552000	OIL RETURN FELT				1
2	22925101	OIL FELT PRESSER				1
3	D3536555B00	OIL RETURN TUBE PRESSER PLATE				1
4	SS4110715SP	SCREW 11/64-40 L=7				1
5	B3534155000	PLUNGER				1
6	B1214038000	PLUNGER SPRING				1
7	SQ1110401MZ	CONNECTING SCREW				2
8	B3530555000	OIL SIGHT WINDOW				1
9	RO195240100	RUBBER RING				1
10	B3545122000	OIL GUARD				1
11	B3552481000	OIL PUMP INSTALLING COLLAR				3
12	B3513484000A	MAIN SHAFT OIL TUBE				1
13	B3527415000	RUBBER JOINT				2
14	B3553481000	GEAR OIL PIPE				1
15	B2657771000	GUIDE				1
16	SS4110715SP	SCREW 11/64-40 L=7				2
17	B3554481000	HOLDER				1
18	B91351230A0	SILIC. OIL LUBRICATING OILER ASM.	SPECIAL ORDER PARTS			1
19	B35015550A0	LUBRICATING OIL PUMP ASM.				1
20	B3503555000	OIL PUMP INSTALLING BASE		*		1
21	B3505555000	RUBBER JOINT		*		1
22	B3506555000	RUBBER JOINT		*		1
23	B3501555000	LUBRICATING OIL PUMP		*		1
24	B3507555000	OIL PUMP IMPELLER		*		1
25	B3508555000	OIL PUMP IMPELLER COVER		*		1
26	SM4031001SC	SCREW M3X0.5 L=10		*		3
27	WT0320002KZ	WASHER		*		3
28	NM60300000E	NUT M3X0.5		*		3
29	B3502555000A	LUBRICATING OIL PUMP COVER		*		1
30	SE4301031SR	SCREW		*		5
31	SS6123010SP	SCREW 3/16-28 L=30.0				2
32	SS6122510SP	SCREW 3/16-28 L=25				1
33	B3521481000A	LUBRICATING OIL PIPE				1
34	EA9500B0100	CABLE BAND				1
35	B3526226000	OIL SPONGE				1
36	BP300000000	VINYL PIPE				0.4

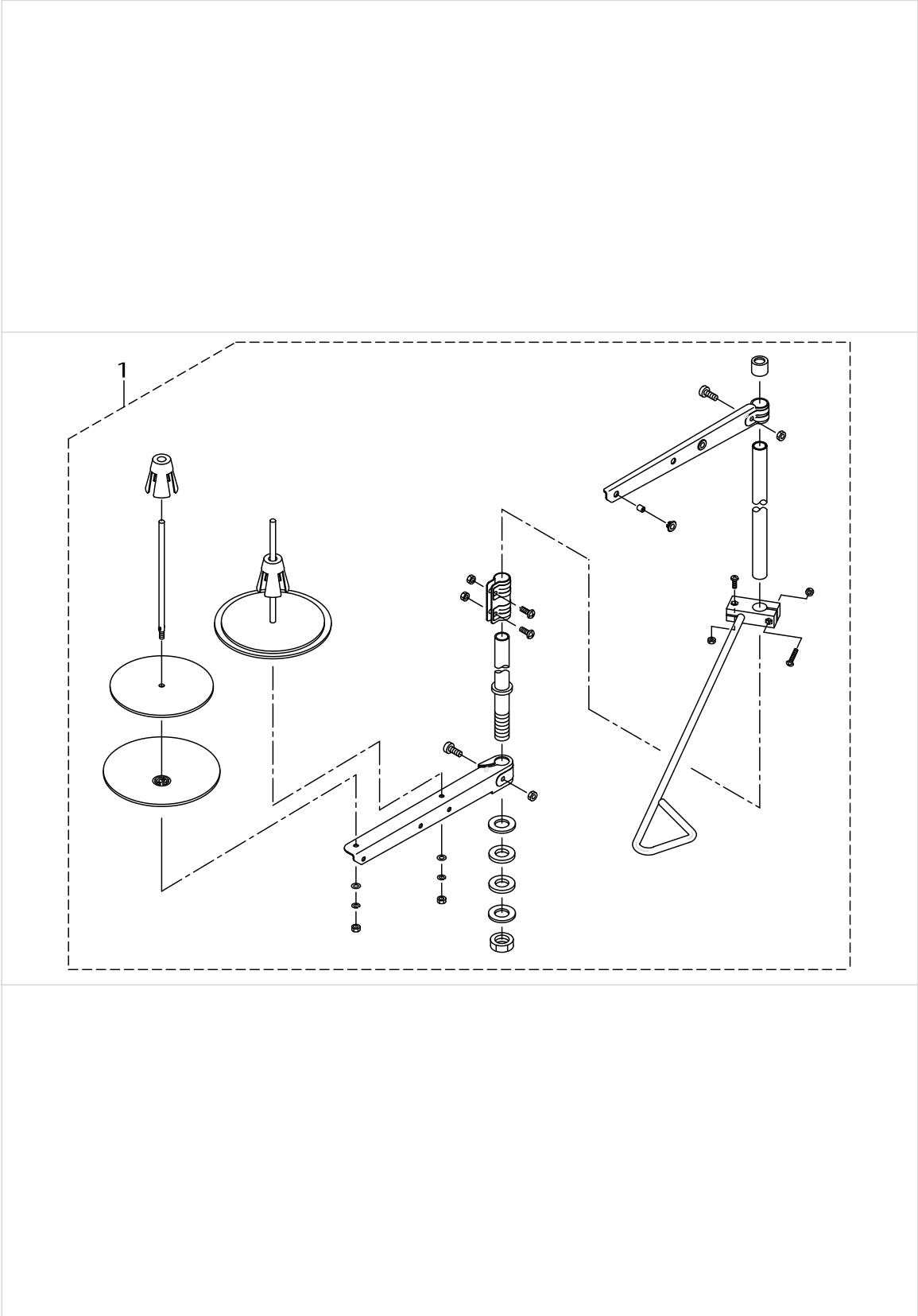
OIL RESERVOIR & KNEE LIFTER COMPONENTS



OIL RESERVOIR & KNEE LIFTER COMPONENTS

No.	Parts No.	Parts name	Remarks	Level	Cons	Qty
1	B8217481AD0	OIL RESERVOIR ASM.				1
2	B8217481AC0	OIL RESERVOIR ASM.		*		1
3	B8217481000	OIL RESERVOIR		*		1
4	B8235481000	GASKET A		*		2
5	B8237481000	GASKET C		*		1
6	D8227555E00	FELT CUSHION		*		4
7	SS7701010SP	SCREW 5/16-24 L=10		*		2
8	RO068190100	RUBBER RING		*		2
9	NM6060001SE	NUT M6		*		2
10	B3420555000	KNEE PRESS ROD		*		1
11	22932453	BRACKET ASM.		*		1
12	SM8063012TR	SCREW M6 L=30		*		1
13	B3426552000	THRUST RING		*		1
14	11024106	SPRING		*		1
15	B3425555000A	KNEE LIFTER ROTATION ARM		*		1
16	SM9061853SR	SCREW M6 L=17.5		*		1
17	SM8063012TR	SCREW M6 L=30		*		1
18	B3421555000	KNEE PRESS LIFTER ROD				1
19	B8228125000	OIL RESERVOIR MAGNET				1
20	22934251	KNEE PAD PLATE ASM.				1
21	22934301	KNEE PAD PLATE SUPPORT		*		1
22	SM9061203SE	SCREW M6 L=12		*		1
23	22934509	KNEE PAD PLATE COVER		*		1
24	22934608	KNEE PAD UPRIGHT SHAFT		*		1
25	22934400	KNEE PAD PLATE RUBBER		*		1
26	22934202	KNEE PAD PLATE		*		1

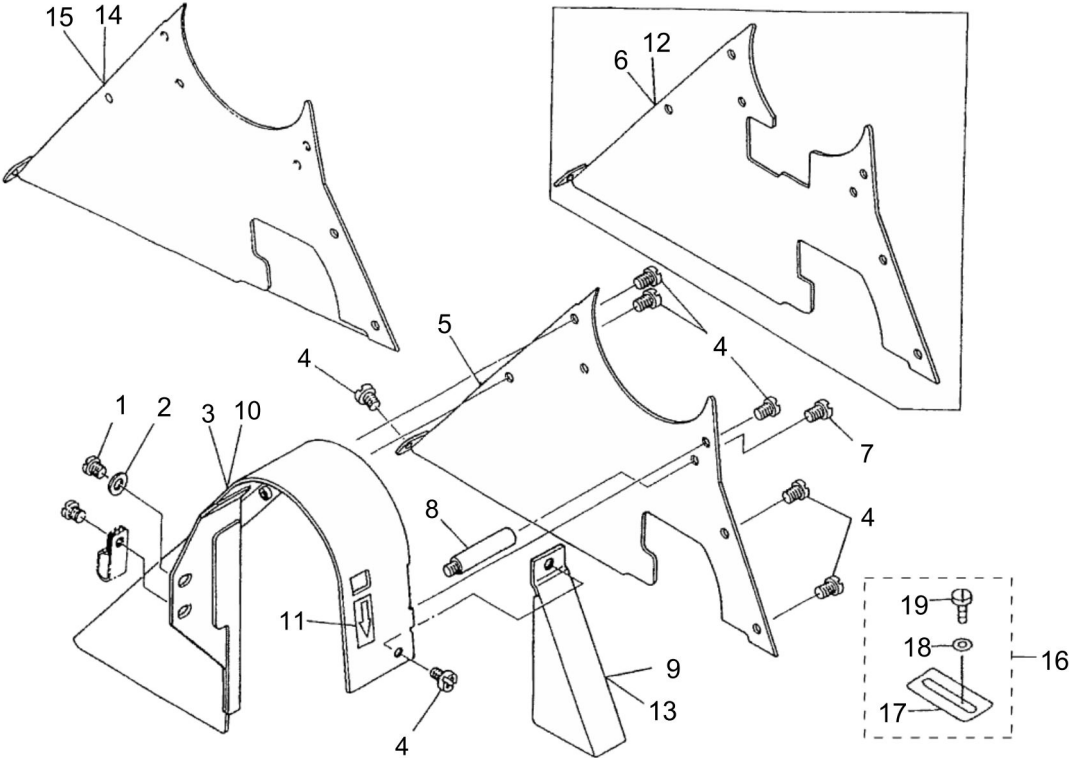
THREAD STAND COMPONENTS



THREAD STAND COMPONENTS

No.	Parts No.	Parts name	Remarks	Level	Cons	Qty
1	40111351	THREAD STAND ASM.				1

BELT COVER COMPONENTS



BELT COVER COMPONENTS

No.	Parts No.	Parts name	Remarks	Level	Cons	Qty
1	SS4150915SP	SCREW 15/64-28 L=9				1
2	WP0621016SD	WASHER 6.2X13X1				1
3	D8230555E00	BELT COVER				1
4	SS4110515SP	SCREW 11/64-40 L=5				7
5	D8231555E00	BELT COVER TOP	FOR MH-481-5,481-4-3(EXCEPT JA)			1
6	D8231555E0A	BELT COVER TOP	FOR JA			1
7	SS4110815SP	SCREW 11/64-40 L=8				1
8	D8232555B00	BELT COVER SUPPORT				1
9	D8232555E00	THREAD WINDER COVER				1
10	B82303800A0	BELT COVER	FOR URBAN WHITE			1
11	CM500300001	DIRECTION LABEL	FOR URBAN WHITE			1
12	D8231555E0D	BELT COVER TOP	FOR URBAN WHITE(FOR JA)			1
13	D8232555E0A	BOBBIN WINDER COVER	FOR URBAN WHITE			1
14	40013170	BELT COVER TOP	FOR URBAN WHITE			1
15	B8231380000	BELT COVER TOP	FOR JE & USE IN JAPAN			1
16	10163152	BELT COVER SUPPORT PLATE ASM.	FOR JE			1
17	10163103	BELT COVER SUPPORT PLATE		*		1
18	WP0501016SC	WASHER 5X10.5X1		*		1
19	SK3482500SC	WOOD SCREW D=4.8 L=25		*		1

LIST FOR INFORMATION OF CHANGE (1)

As to the place changed, refer to the corresponding Rev.No.
 When previous parts(Obsoleted part)and new parts(Added parts)are
 not interchangeable with each other:
 In this case,even obsoleted parts(D.)can be ordered with the
 obsoleted part number,so select the parts with changed dates and
 place your orders.

変更箇所は、該当Rev.No.版をご参照ください。
 部品の互換性がない変更の場合は、削除された品番でも、ご注文できます。
 BE481530PJA

No.0259-07 Rev.No.

*A:Added parts追加部品/D:Obsoleted parts削除部品/E:Erratum訂正

* Rev. No.	Page 頁	Ref. No.	Parts No. 品番	* Rev. No.	Page 頁	Ref. No.	Parts No. 品番
D 06	2	1	B1121-552-0A0	A 07	2	1	401-14232
D 06	2	58	CM-3002000-B1				
D 06	2	59	CM-3002001-01	A 07	2	58	CM-3012000-01
D 06	2	60	CM-3002001-A1				
				A 07	4	55	229-51552
D 06	6	3	D1230-555-B00	A 07	6	3	D1230-552-B00
D 06	8	54	B1432-027-000	A 07	8	54	228-14909
D 06	10	1	B1624-555-00A	A 07	10	1	B1623-555-000-A
D 06	10	8	B1625-555-000	A 07	10	8	401-14880
D 06	10	13	SS-2090710-SP	A 07	10	13	SS-2090710-TP
D 06	10	16	B1612-161-000	A 07	10	16	401-14884
D 06	10	19	B1627-555-0A0	A 07	10	19	401-20458
D 06	10	28	B1617-555-000	A 07	10	28	401-36257
D 06	10	31	B1615-555-000	A 07	10	31	401-14882
D 06	10	36	B1614-555-000	A 07	10	36	401-36256
D 06	10	48	B1629-555-0A0	A 07	10	48	401-14881
				E 07	10	63	B1624-555-00A
				A 07	10	64	400-82080
				A 07	10	65	400-82081
D 06	12	14	B1605-555-000	A 07	12	14	401-33994
D 06	12	25	B1604-155-000	A 07	12	25	401-33993
D 06	12	32	B1604-155-000	A 07	12	32	401-33993
D 06	18	62	SS-4080610-SP	A 07	18	62	SS-4080620-TP
D 06	20	16	SS-6090510-SP	A 07	20	16	SS-6090510-TP
D 06	20	33	D2460-486-EAB				
D 06	22	35	D3901-486-EAC				
D 06	22	41	NM-6040002-SE	A 07	22	41	NM-6040003-SC
D 06	22	42	WS-0411002-KB	A 07	22	42	WS-0411002-KS
D 06	22	44	G5066-110-000	A 07	22	44	HK-0015000-OB
D 06	22	49	D3901-481-D0B				
D 06	24	11	D3008-486-EAB				
D 06	24	13	D3901-481-C0B				
D 06	24	19	NM-6040002-SE	A 07	24	19	NM-6040003-SC
D 06	24	20	WS-0411002-KB	A 07	24	20	WS-0411002-KS
D 06	24	23	HW-5F18S12-48	A 07	24	23	HW-0006000-20
D 06	24	24	D2120-555-C00	A 07	24	24	HX-0015000-0A

HOW TO MAKE USE OF THIS PARTS LIST

1.Explanation of codes

1)"*"mark.....means this part is changed from the previous parts book.

As to the details of the change, refer to the "List for information of change".

2)"#01".....refer to "Note" explanation at bottom of page.

2.Codes on the "Qty" column

- Each numeral indicates the number of parts required.
- "0.1" and "2.5" indicate the length (in meters) of the respective parts.

3.Parentheses mean that the corresponding part is a subpart that constructs an assembly part.

4.Dotted lines on the Figures indicate assembly parts.

1."注記"欄の記号説明

1) "*"印.....前回のパーツブックに比較して今回変更された部品を意味します。

変更内容は、"変更情報リスト"を参照してください。

2) "#01".....ページ下の"注記"の説明を参照してください。

2.数量欄の数字は、個数を表し、0.1、2.5等の数値は、長さ（単位メートル）を表します。

3.数量欄の（ ）は、組部品を構成している子部品であることを意味します。

4.イラストページの-----枠は、組構成であることを意味します。

NUMERICAL INDEX OF PARTS

PART NO	PAGE	REF NO.	PART NO	PAGE	REF NO.	PART NO	PAGE	REF NO.
10163103	52	17	B1103481B00	6	47	B13084810B0	14	44
10163152	52	16	B1103481F00	6	22	B13084810C0	14	39
10178705	14	11	B1105380000	6	30	B1401481000	10	2
11004207	16	49	B1106122000	2	36	B1403155000	10	7
11024106	48	14	B1106380000	6	32	B14033520A0	24	6
11072204	30	2	B1106481000A	6	15	B1408481000	10	32
22814909	16	54	B11064810A0A	6	14	B14114810A0	10	8
22901409	10	21	B1107380000	6	28	B1414232000	24	21
22901805	4	59	B1107481000	6	20	B1414555000	10	10
22904155	22	35	B1108481000	6	16	B1418552A00	10	6
22906101	10	19	B1109481000	6	18	B1419155000	10	5
22907000	14	10	B1110481000A	2	46	B1421481000	14	2
22907109	14	9	B1111038000	4	50	B1509555000	14	15
22907406	14	14	B1111481000	2	47	B1511555000	14	16
22907505	16	64	B1112481000A	4	48	B1515552000	14	17
22907604	16	63	B1115380000	6	26	B1516552000	14	20
22907703	14	13	B1119481000	2	15	B15185550A0	14	25
22907802	16	67	B112155200A	4	53	B1520552000A	14	28
22908909	14	38	B1122552000	2	2	B1521555000	14	29
22912000	2	38	B1130481000A	2	6	B1522552000	30	26
22912109	2	39	B11304810A0	2	5	B1523226000	14	23
22914006	18	17	B1131481000	2	7	B15244810B0	16	65
22925101	46	2	B1132481000	2	8	B1524481CC0	14	1
22932453	48	11	B1134481000	2	33	B1532481C00	14	3
22934202	48	26	B1135481000	2	34	B1533481C00	14	5
22934251	48	20	B1161481000A	6	39	B1536481C00	14	4
22934301	48	21	B11614810B0	6	38	B1601555000	22	15
22934400	48	25	B1162481000	6	41	B1602481000A	22	4
22934509	48	23	B1166481000	6	42	B16034860A0	22	9
22934608	48	24	B1167481000	6	43	B1604486000	22	5
22951552	8	55	B1168481000	6	44	B1606481000	18	41
40013170	52	14	B1201481000A	10	22	B1607352000	16	52
40082080	20	64	B1202481000	10	35	B1608481000	18	39
40082081	20	65	B1203481B00	10	36	B1610430000	22	30
40111351	50	1	B12064810A0	10	26	B16104300A0	26	37
40114236	2	1	B12064810B0	10	27	B16104810B0	18	12
40114880	18	8	B12135520A0A	10	23	B1613481A00	22	43
40114881	20	48	B1214038000	46	6	B1613481D00	22	44
40114882	18	31	B1226552000	10	25	B1613481F00	22	1
40114884	18	16	B1301481000A	14	47	B1618161000	18	34
40120458	18	19	B1302552B00	16	48	B1619555000	18	32
40133993	22	32	B13050120A0	14	42	B1620481000	18	5
40133994	22	14	B13061550A0	14	46	B1621555000A	18	18
40136256	18	36	B13061550B0	14	41	B1622555000	18	6
40136257	18	28	B13084810A0	14	45	B1623555000A	18	1

NUMERICAL INDEX OF PARTS

PART NO	PAGE	REF NO.	PART NO	PAGE	REF NO.	PART NO	PAGE	REF NO.
B1623555A00	20	62	B2008481000	26	14	B23094810A0	28	49
B1624555000	20	51	B20104810A0	26	11	B2310481000	28	52
B162455500A	20	63	B2012481000	26	9	B2311481000A	28	48
B1626555000	18	9	B20144810A0	26	15	B2312481000	28	57
B1628555000	18	24	B20154810A0	26	4	B2657771000	46	15
B1630555000	18	44	B2025481000	26	6	B3101481000	30	40
B1633555000	18	37	B2030481000	26	3	B3102481000	30	39
B1634555000B	18	3	B2032481000	26	8	B31024810A0	30	35
B1636555000	18	26	B210348100B	24	4	B3104481000	30	37
B1646555000	18	25	B2105481000	24	5	B3106380000	30	8
B1660481000	20	56	B21064810A0	24	9	B3106481000	30	3
B1661481000	20	57	B2108481000	24	18	B3107704000	30	41
B1662481000	20	58	B2109481000A	24	14	B3115481000	30	27
B1701481000	22	24	B2110481000A	24	13	B3116481000	30	28
B1702155000	22	37	B2111481000A	24	16	B3117481000	30	29
B17031550A0	22	39	B21124810A0	24	19	B3119771000	30	43
B1708481000	22	41	B21154810A0	24	29	B3120125000	30	44
B171248100B	22	42	B21174810A0	24	12	B3120481000	30	33
B17134810A0	22	26	B21194810A0	24	33	B3121481000	30	12
B1715481000	22	7	B21204810A0	24	31	B3126012000	30	36
B1715481000	24	25	B2122481000	24	36	B3126352000	30	5
B1801481000A	16	51	B2123481000	24	37	B3129012A00	30	42
B1802481000	16	59	B2124481000	24	27	B3148123000	2	22
B1803481000	16	57	B21254810A0	24	39	B3148123000	6	8
B1803481000	26	25	B2201481000A	2	27	B3412415000	14	30
B1813481000	16	61	B2202481000	2	29	B3414415000A	14	33
B1827232000	24	22	B2203481000	30	46	B3415481000	14	36
B1901481000A	10	14	B2212481000	32	57	B3416415000A	14	34
B19024810A0B	10	11	B2214481000	32	54	B3416552000	14	31
B1903481000	2	43	B2215481000	32	59	B3420555000	48	10
B1903552000	10	34	B2216481000	32	53	B3421555000	48	18
B1904481000	2	41	B2217481000	32	51	B342555000A	48	15
B190448100A	4	55	B2218481000	32	48	B3426552000	48	13
B1905380000	6	1	B2220481010	32	64	B3431581000	14	22
B1905541B00	10	33	B2225481000	32	65	B3501555000	46	23
B1908481000A	10	15	B2226481000	16	62	B35015550A0	46	19
B1909481000A	10	17	B23014810A0	26	31	B3502555000A	46	29
B1916481000	2	25	B2302481000	26	33	B3503555000	46	20
B1916481000	6	10	B23034810A0	26	39	B3505555000	46	21
B2001481000A	26	22	B23044810A0	26	41	B3506555000	46	22
B2002481000	26	23	B23054810A0	26	46	B3507555000	46	24
B20044810A0	26	27	B2306019000	30	38	B3508555000	46	25
B20054810AB	26	29	B2306481000	26	43	B3513484000A	46	12
B20064810A0	26	19	B2307481000	26	44	B3521481000A	46	33
B2007481000	26	21	B23084810A0	28	55	B3526226000	46	35

NUMERICAL INDEX OF PARTS

PART NO	PAGE	REF NO.	PART NO	PAGE	REF NO.	PART NO	PAGE	REF NO.
B3527415000	46	13	D1517555B00A	14	21	D2412481C00	34	21
B3528552000	46	1	D1901481CC0	10	13	D2413481C00	34	20
B3530555000	46	8	D1910481C00	10	16	D2414481CA0	34	23
B3534012000	2	18	D1912481C00A	6	3	D2415481C00	34	32
B3534155000	46	5	D1913481C00	2	21	D2415481D00	34	27
B3545122000	46	10	D1913481C00	6	6	D2415481DA0A	34	26
B3552481000	46	11	D1913481CA0	2	20	D2416481C00	34	29
B3553481000	46	14	D1913481CA0	6	5	D2421481CA0	36	49
B3554481000	46	17	D1914481C00A	2	24	D2424481C00A	36	60
B41033520A0	22	28	D1914481C00A	6	7	D2425481C00	36	61
B8217481000	48	3	D1917481C00	2	23	D2426481C00	36	56
B8217481AC0	48	2	D1917481C00	6	9	D2428481CA0	36	58
B8217481AD0	48	1	D2013481C00	26	1	D2429481C00	36	52
B8228125000	48	19	D2101481CA0	24	1	D2430481C00	36	53
B82303800A0	52	10	D2101555C00	42	3	D2460481DAB	34	34
B8231380000	52	15	D2101555C0A	42	10	D2461481C00	34	40
B8235481000	48	4	D2102555B00	42	32	D2461486E00	36	63
B8237481000	48	5	D2107555B00	42	29	D2462481C00	36	47
B91351230A0	46	18	D2111555B00B	42	1	D2465481C00	34	37
BP300000000	46	36	D2111555B0A	42	27	D2466481C00	34	35
BT0500300EA	26	18	D2112555B00	6	35	D2467555B00	6	37
BT0800602E0	34	38	D2114555B00	42	8	D2469555B00	6	34
CM300200001	4	57	D2118555B00A	38	37	D2611555B00A	42	25
CM301200001	4	58	D2118555B00A	42	15	D3001481C00A	42	33
CM500300001	52	11	D2119555C00	42	21	D3002481C00A	42	34
CQ202000000	24	34	D2120555C00	32	73	D3003481C00A	42	38
CQ202000000	34	19	D2126481CA0	24	42	D3004481C00A	42	36
CQ252000000	26	47	D2210481DA0	30	45	D3005481C00	42	30
CQ303000000	22	34	D2211481D00	32	58	D3006481C00	42	17
CQ303000000	26	38	D2213481C00	32	56	D3008481DAB	42	12
CS111121ASH	16	55	D2227481D00	32	61	D3010481C00	42	43
CS147121ESH	10	38	D2401481CD0	34	5	D3010481CAB	42	41
D1104481C00	6	25	D2401481CDB	34	6	D3010481DA0	42	42
D1104481CA0	6	24	D2403481C00	34	7	D3011481C0B	44	50
D1118481C00	2	14	D2404481D0A	34	12	D3011481D00	42	44
D1118481C0A	4	54	D2404481D0B	34	13	D3012481D00	42	47
D1204555D00	10	41	D2405481C00A	34	4	D3013481D00	44	48
D1204555DA0	10	40	D2406481D00	34	10	D3103481DA0	30	1
D1208555D00	10	45	D2407481D00	34	9	D3105481D00	32	72
D1217486D00	10	46	D2407481DBA	34	1	D3110481C00	30	25
D1217486D0A	10	47	D2407481DBB	34	2	D3111481CA0	2	16
D1230552B00	10	3	D2408481C00A	34	15	D3130481CA0	30	20
D1230555B00	10	42	D2409481D00	34	11	D3133481C00	30	23
D1231555B00	10	43	D2410481C00A	34	18	D3134481C00	30	22
D1232555B00	10	44	D2411481CA0	36	66	D3135481C00A	30	16

NUMERICAL INDEX OF PARTS

PART NO	PAGE	REF NO.	PART NO	PAGE	REF NO.	PART NO	PAGE	REF NO.
D3135481CB0	30	15	HK03464000B	34	43	RO037180100	14	26
D3136481CA0	30	17	HK03464000B	40	49	RO037180100	30	19
D3536555B00	46	3	HK03464000B	42	28	RO044240100	10	31
D3901481D0B	42	14	HW000600020	42	23	RO068190100	48	8
D3901481DAB	38	32	HW200110000	38	43	RO069180100	20	54
D3901486DAC	38	34	HW2F18S1219	42	22	RO074240100	18	4
D3901486E0B	38	36	HX00150000A	42	24	RO195240100	46	9
D3901486EAB	38	33	HX00150000B	38	44	SD0360601SP	34	14
D3902481C00A	38	39	MAT80115T00	38	40	SD0450211SP	38	21
D3903481C00	38	46	MAT80115T00	42	18	SD0450701TP	24	10
D3903481C0A	38	35	MTV700B1100	10	1	SD0500401SP	18	45
D3904481E00	38	29	NM60300000E	46	28	SD0600322SD	14	35
D3905481C00	38	25	NM6040003SC	38	41	SD0600452TP	36	54
D3906481C00	38	22	NM6040003SC	42	19	SD0630275SP	14	18
D3907481CA0	38	26	NM6050001SP	34	30	SD0630301SP	14	19
D3908481C00	38	20	NM6060001SE	48	9	SD0640211SP	32	69
D3909481C00	38	24	NS6060310SP	2	26	SD0640231SP	6	45
D3910481C00	38	18	NS6060310SP	6	11	SD0791501SP	36	55
D3911481C00	38	8	NS6090310SP	38	12	SD1020701SP	18	42
D3911481CA0	38	1	NS6110310SP	14	6	SD1020701SP	22	20
D3912481CA0	38	6	NS6110310SP	30	55	SE4301031SR	46	30
D3913481D00	38	5	NS6110310SP	32	55	SK3482500SC	52	19
D3914481C00	38	7	NS6120310SP	18	47	SL4030621SS	42	7
D3915481C00	38	13	NS6120310SP	22	12	SL4040881SF	42	6
D3916481C00	6	12	NS6120310SP	24	35	SL4041081SC	42	13
D3916481C00	38	14	NS6120310SP	36	50	SM4031001SC	46	26
D3917481D00	38	4	NS6150430SP	20	59	SM4040601SB	38	48
D3918481D00	38	2	NS6620310SP	14	37	SM4040601SB	40	48
D3919481D00	38	9	NS6680320SP	18	43	SM6062002TP	24	15
D3921481D00	34	31	NS6680410SP	22	21	SM6062002TP	26	2
D3928481DA0	32	70	PS0200102KH	30	7	SM8063012TR	48	17
D3929481DA0	32	71	RC0150001KP	22	22	SM9061203SE	48	22
D3931481D00	32	66	RE0200000K0	38	30	SM9061853SR	48	16
D8227555E00	48	6	RE0250000K0	34	8	SQ1110401MZ	46	7
D8230555E00	52	3	RE0250000K0	42	31	SS1080510SP	22	6
D8231555E00	52	5	RE0400000K0	32	68	SS1080510SP	24	26
D8231555E0A	52	6	RE0400000K0	34	39	SS1110710SP	2	28
D8231555E0D	52	12	RE0500000K0	14	32	SS2080810SP	24	3
D8232555B00	52	8	RE0500000K0	42	35	SS2090710TP	18	13
D8232555E00	52	9	RE0600000K0	14	24	SS2110920TP	6	23
D8232555E0A	52	13	RE0600000K0	30	32	SS2110930SP	18	14
D9101481CA0	8	49	RE0600000K0	38	28	SS4080415SP	6	33
EA9500B0100	46	34	RE0901110K0	38	38	SS4080415SP	38	10
G5066110000	34	41	RE0901110K0	42	16	SS4080620TP	32	62
HK034610140	34	33	RO029180100	10	24	SS4110515SP	2	52

NUMERICAL INDEX OF PARTS

PART NO	PAGE	REF NO.	PART NO	PAGE	REF NO.	PART NO	PAGE	REF NO.
SS4110515SP	4	52	SS6121610TP	18	40	SS7150940SP	6	36
SS4110515SP	6	48	SS6121840SP	22	10	SS7151120SP	10	37
SS4110515SP	8	48	SS6122510SP	46	32	SS7151210SP	36	64
SS4110515SP	32	63	SS6123010SP	46	31	SS7620750SP	18	23
SS4110515SP	38	19	SS6151040SP	36	68	SS7681650TP	10	29
SS4110515SP	52	4	SS6151412TP	36	57	SS7701010SP	48	7
SS4110615SP	8	53	SS6151920SP	34	22	SS8080310TP	38	3
SS4110715SP	30	74	SS6621220SP	22	29	SS8090540SP	20	61
SS4110715SP	32	74	SS6660610TP	26	30	SS8110310SP	4	51
SS4110715SP	46	16	SS6661110SP	18	15	SS8110410TP	22	27
SS4110815SP	2	19	SS7080410SP	42	39	SS8110410TP	24	8
SS4110815SP	52	7	SS7080510TP	10	4	SS8110410TP	26	34
SS4111015SP	2	3	SS7081310SP	32	60	SS8110510SP	18	10
SS4111415SP	30	31	SS7090410SP	38	23	SS8150710SP	18	50
SS4112515SP	30	30	SS7090510SP	42	11	SS8150710SP	20	50
SS4150915SP	52	1	SS7090520TP	24	41	SS8150710SP	22	38
SS5060310SP	16	66	SS7090520TP	26	53	SS8150710SP	24	38
SS5060310SP	34	17	SS7090520TP	28	53	SS8150710SP	26	45
SS5110810SP	36	51	SS7090710SP	42	37	SS8150710TP	10	28
SS6060210SP	6	27	SS7090910TP	26	51	SS8150710TP	24	2
SS6060340SP	6	29	SS7090910TP	28	51	SS8150710TP	26	32
SS6060410TP	14	7	SS7091110TP	14	8	SS8151150SP	16	60
SS6080320SP	2	49	SS7110340SP	42	2	SS8151150SP	18	7
SS6080320SP	4	49	SS7110510SP	2	35	SS8151150TP	36	59
SS6080320SP	30	52	SS7110510SP	38	17	SS8151550SP	12	48
SS6080320SP	32	52	SS7110710SP	18	11	SS8620610SP	18	30
SS6080320SP	44	49	SS7110710SP	42	4	SS8660610TP	14	12
SS6080410SP	32	49	SS7110710TP	36	62	SS8660610TP	22	36
SS6080410SP	42	45	SS7110740TP	34	46	SS8660810TP	10	39
SS6090420SP	34	3	SS7110840SP	36	65	SS8660810TP	14	56
SS6090510TP	34	16	SS7110840SP	42	26	SS8660810TP	16	56
SS6090630SP	2	17	SS7110910SP	18	22	SS8660810TP	20	53
SS6090670TP	10	18	SS7110910SP	34	42	SS8660810TP	26	28
SS6090810SP	22	8	SS7111110TP	24	20	SS8661040TP	20	52
SS6091210TP	10	12	SS7111110TP	34	67	SS8681650TP	10	30
SS6092120SP	26	16	SS7111110TP	36	67	SS9151120CP	2	37
SS6110420TP	30	34	SS7111110TP	38	27	TA0750704R0	2	12
SS6110710TP	30	21	SS7111120SP	18	33	TA1050504R0	2	13
SS6120930SP	18	2	SS7111120SP	34	45	TA1050504R0	6	40
SS6121210SP	18	49	SS7111260SP	18	38	TA1050504R0	26	17
SS6121210SP	20	49	SS7111310TP	26	42	TA1250406R0	2	4
SS6121220TP	24	40	SS7111410TP	10	20	TA1250705R0	2	11
SS6121220TP	26	56	SS7111410TP	22	2	TA1750502R0	2	40
SS6121220TP	28	56	SS7112420SP	42	9	TA2050406R0	4	56
SS6121610SP	22	40	SS7150740SP	8	50	TA2101002R0	2	30

NUMERICAL INDEX OF PARTS

PART NO	PAGE	REF NO.
TA2351004R0	2	32
TA2351305R0	2	31
WP0371026SD	28	54
WP0371026SD	32	50
WP0371026SD	38	11
WP0371026SD	42	46
WP0371036SD	42	40
WP0480856SP	2	45
WP0480856SP	22	11
WP0480856SP	34	44
WP0501016SC	52	18
WP0501016SD	24	24
WP0501016SD	36	48
WP0621016SD	20	60
WP0621016SD	52	2
WP0621026SP	8	51
WP0740516SP	14	27
WP0740516SP	30	14
WP0851216SC	30	9
WS0411002KS	38	42
WS0411002KS	42	20
WS0441040KP	38	31
WT0320002KZ	46	27
WT0530002KS	8	54
WT0640002KN	8	52
WZ0541510KP	18	46
WZ0641510KP	6	46
WZ1052010KP	20	55