

MODEL : LH-1152

List No : 0128-09

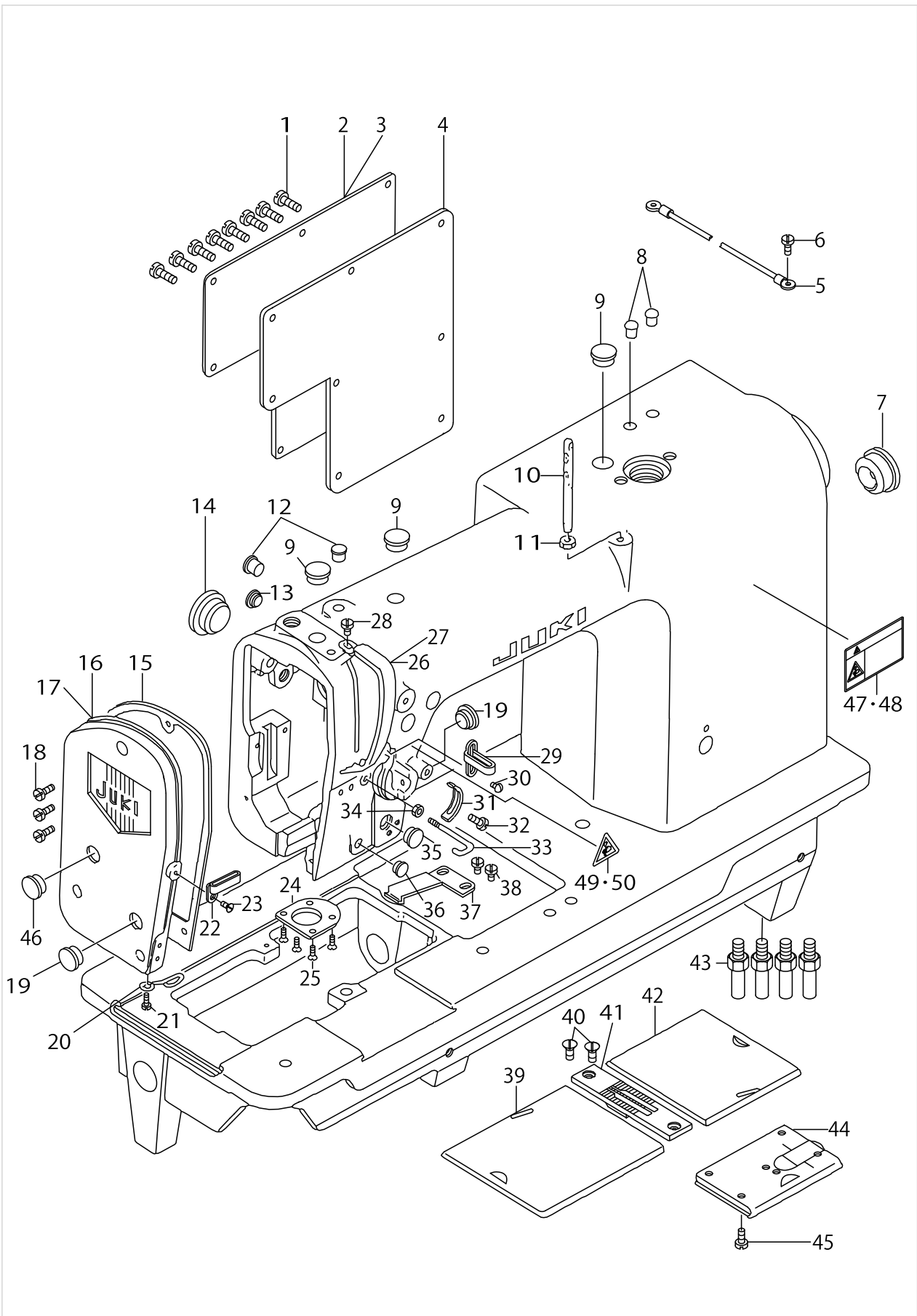
PARTS LIST

Published:09/10/2017

CONTENTS

MACHINE FRAME & MISCELLANEOUS COVER COMPONENTS	1
MAIN SHAFT, NEEDLE FEED & NEEDLE BAR COMPONENTS.....	5
HOOK & HOOK DRIVING SHAFT COMPONENTS	9
FEED MECHANISM COMPONENTS.....	13
PRESSER BAR & TENSION RELEASE COMPONENTS(FOR LH-2178-7).....	17
EXCLUSIVE PARTS BY STITCH SPECIFICATION (1).....	19
EXCLUSIVE PARTS BY STITCH SPECIFICATION (2).....	21
LUBRICATION COMPONENTS	23
OIL RESERVOIR & KNEE LIFTER COMPONENTS.....	25
THREAD TENSION CONTROLLER COMPONENTS	27
BELT COVER & BOBBIN WINDER COMPONENTS	29
BELT COVER & BOBBIN WINDER COMPONENTS (SPECIAL PARTS).....	31
THREAD STAND COMPONENTS.....	33
FOR STITCH SPECIFICATION "S","A","G" (1).....	35
FOR STITCH SPECIFICATION "S","A","G" (2).....	39
TABLE OF EXCHANGING GAUGE PARTS COMMON TO ALL STITCH SPECIFICATIONS	43
FOR STITCH SPECIFICATION "F".....	45
LIST FOR INFORMATION OF CHANGE.....	47
HOW TO MAKE USE OF THIS PARTS LIST	48

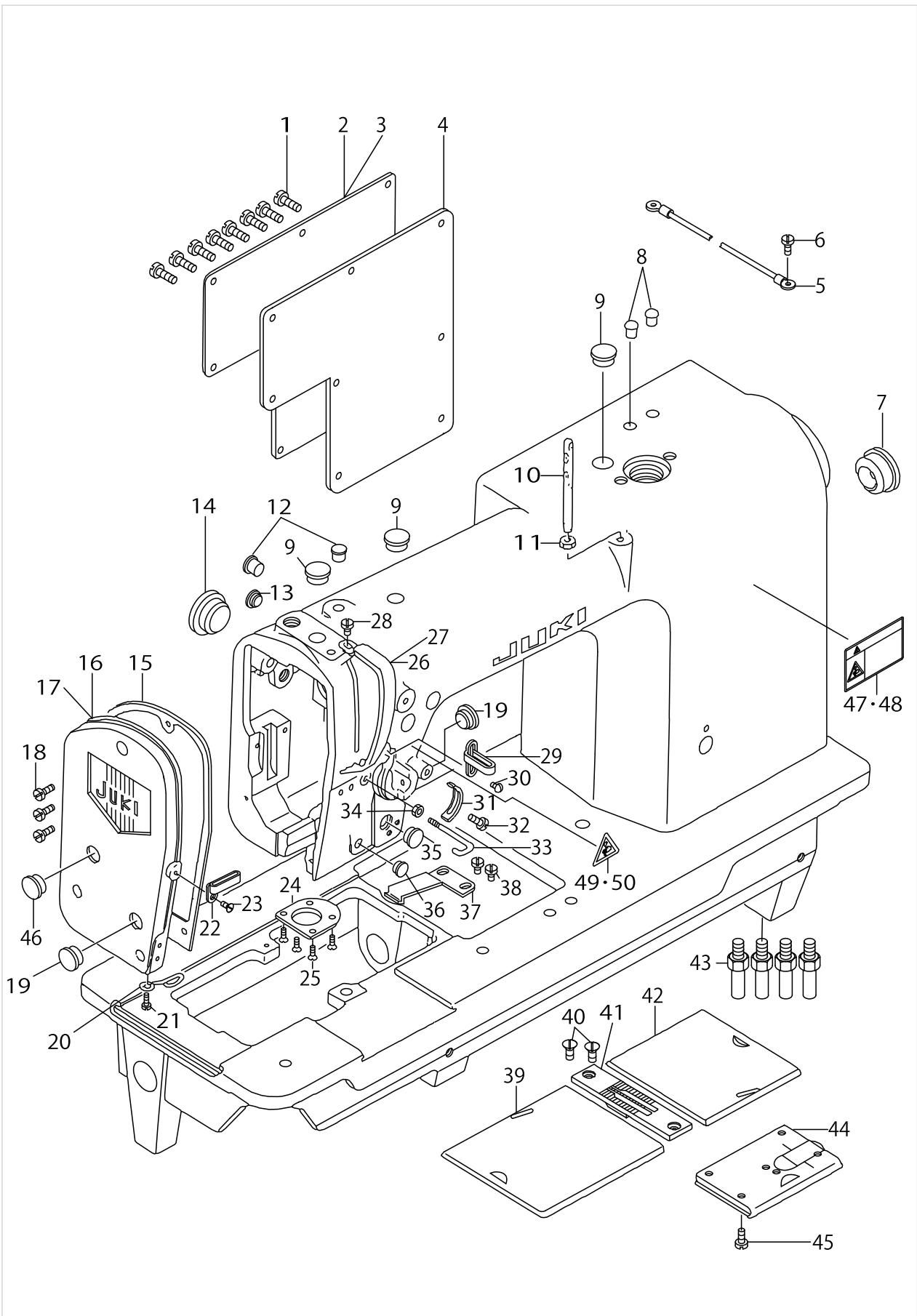
MACHINE FRAME & MISCELLANEOUS COVER COMPONENTS



MACHINE FRAME & MISCELLANEOUS COVER COMPONENTS

No.	Parts No.	Parts name	Remarks	Level	Cons	Qty
1	SS7110910SP	SCREW 11/64-40 L=8.5				8
2	10100907	SIDE PLATE				1
3	10602902	SLIDE PLATE	FOR URBAN WHITE SPECIFICATION PARTS.			1
4	10101004	GASKET				1
5	10741759	GROUND WIRE ASM.				1
6	SS7110710SP	SCREW 11/64-40 L=7				1
7	TA2351004R0	RUBBER PLUG				1
8	TA0550604R0	RUBBER PLUG				2
9	TA1250504R0	RUBBER PLUG				3
10	B1114051000	NEEDLE THREAD GUIDE PIN				1
11	NS6620310SP	NUT 3/16-32				1
12	TA0750704R0	RUBBER PLUG				2
13	TA0750404R0	PLUG D=7.5 L=3.5				1
14	TA2100904R0	RUBBER PLUG				1
15	10100808	GASKET				1
16	10100758	FACE PLATE ASM.				1
17	10160851	FACE PLATE ASM.	FOR URBAN WHITE SPECIFICATION PARTS.			1
18	SS7111120SP	SCREW 11/64-40 L=10.5				3
19	TA1250406R0	RUBBER PLUG D=12.5 L=4				2
20	10101509	THREAD GUIDE, D				1
21	SS5090610SP	SCREW 9/64-40 L=6				1
22	10101400	THREAD GUIDE, C				1
23	SS2090710SP	SCREW 9/64-40 L=7				7
24	10101103	PLATE				1
25	SS2080810SP	SCREW 1/8-44 L=7.5				4
26	B1123552000A	THREAD TAKEUP LEVER OIL GUARD				1
27	B1123552A00	THRED TAKE-UP LEVER OIL GUARD	FOR URBAN WHITE SPECIFICATION PARTS.			1
28	SS7110510SP	SCREW 11/64-40 L=5				1
29	10101301	THREAD GUIDE, B	REPLACE THIS PARTS FOR STITCH SPECIFICATION "G".(SEE PAGE 11)			1
30	SS5090610SP	SCREW 9/64-40 L=6				1
31	B3138512000	TAKE-UP SPRING ADJUSTING PLATE				1
32	SS7090520SP	SCREW 9/64-40 L= 4.5				1
33	10101202	THREAD GUIDE, A				1
34	B1132512000	NUT				1
35	TA1050604R0	RUBBER PLUG				1
36	TA0750404R0	PLUG D=7.5 L=3.5				1
37	B1111563000	BED SLIDE SPRING				1
38	SS7110510SP	SCREW 11/64-40 L=5				2
39	10146009	BED SLIDE, LEFT 3/32" TO 7/16	EXCHANGING GAUGE PARTS SEE PAGE 21~25 FOR STITCH SPECIFICATIONS "A","G" AND "S" AND PAGE 12 AND PAGE 26 FOR STITCH SPECIFICATION "F", RESPECTIVELY.			1
40	SS2110920TP	SCREW 11/64-40 L=8.5				2
41	10135309	THROAT PLATE 3/16	EXCHANGING GAUGE PARTS SEE PAGE 21~25 FOR STITCH SPECIFICATIONS "A","G" AND "S" AND PAGE 12 AND PAGE 26 FOR STITCH SPECIFICATION "F", RESPECTIVELY.			1
42	10146504	BED SLIDE, RIGHT 3/32" TO 7/16	EXCHANGING GAUGE PARTS SEE PAGE 21~25 FOR STITCH SPECIFICATIONS "A","G" AND "S" AND PAGE 12 AND PAGE 26 FOR STITCH SPECIFICATION "F", RESPECTIVELY.			1

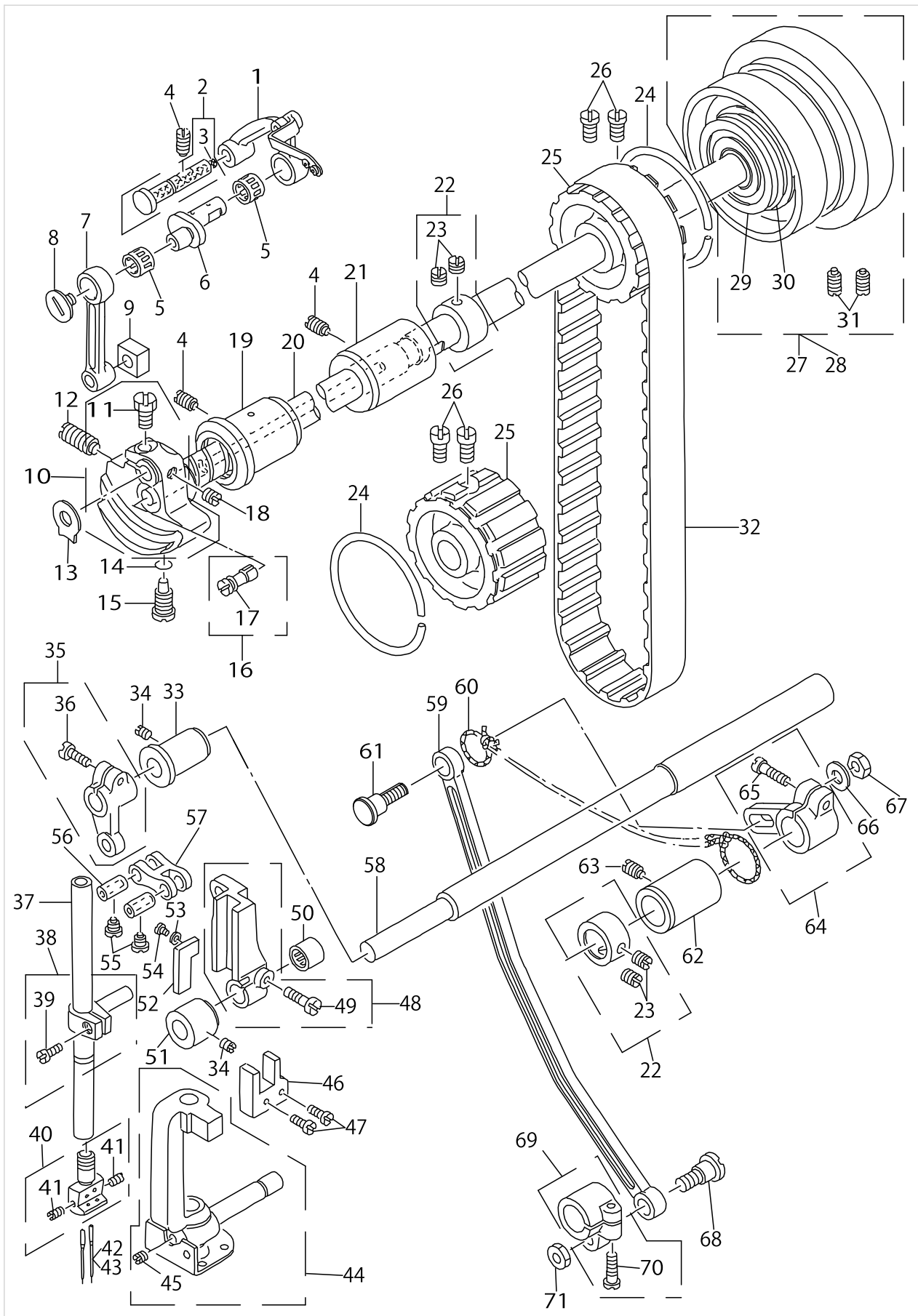
MACHINE FRAME & MISCELLANEOUS COVER COMPONENTS



MACHINE FRAME & MISCELLANEOUS COVER COMPONENTS

No.	Parts No.	Parts name	Remarks	Level	Cons	Qty
43	22602601	BED SCREW STUD				3
44	10100659	BED SLIDE ASM.	REPLACE THIS PARTS FOR A,B T-TYPES FOR TAPE ATTACHING WITH STITCH SPECIFICATION "F".(SEE PAGE 12)			1
45	SS3130710SP	SCREW 13/64-32 L=6.5				3
46	TA2050406R0	RUBBER PLUG				1
47	CM300200101	SAFETY LABEL, 1(SMALL).	FOR USE IN JAPAN			1
48	CM3002001A1	SAFETY LABEL.,3 (SMALL).	EXCEPT JE & USE IN JAPAN			1
49	CM300200001	ATTENTION SEAL	FOR JE			1
50	CM3002000B1	LABEL(16)	FOR USE IN JAPAN			1

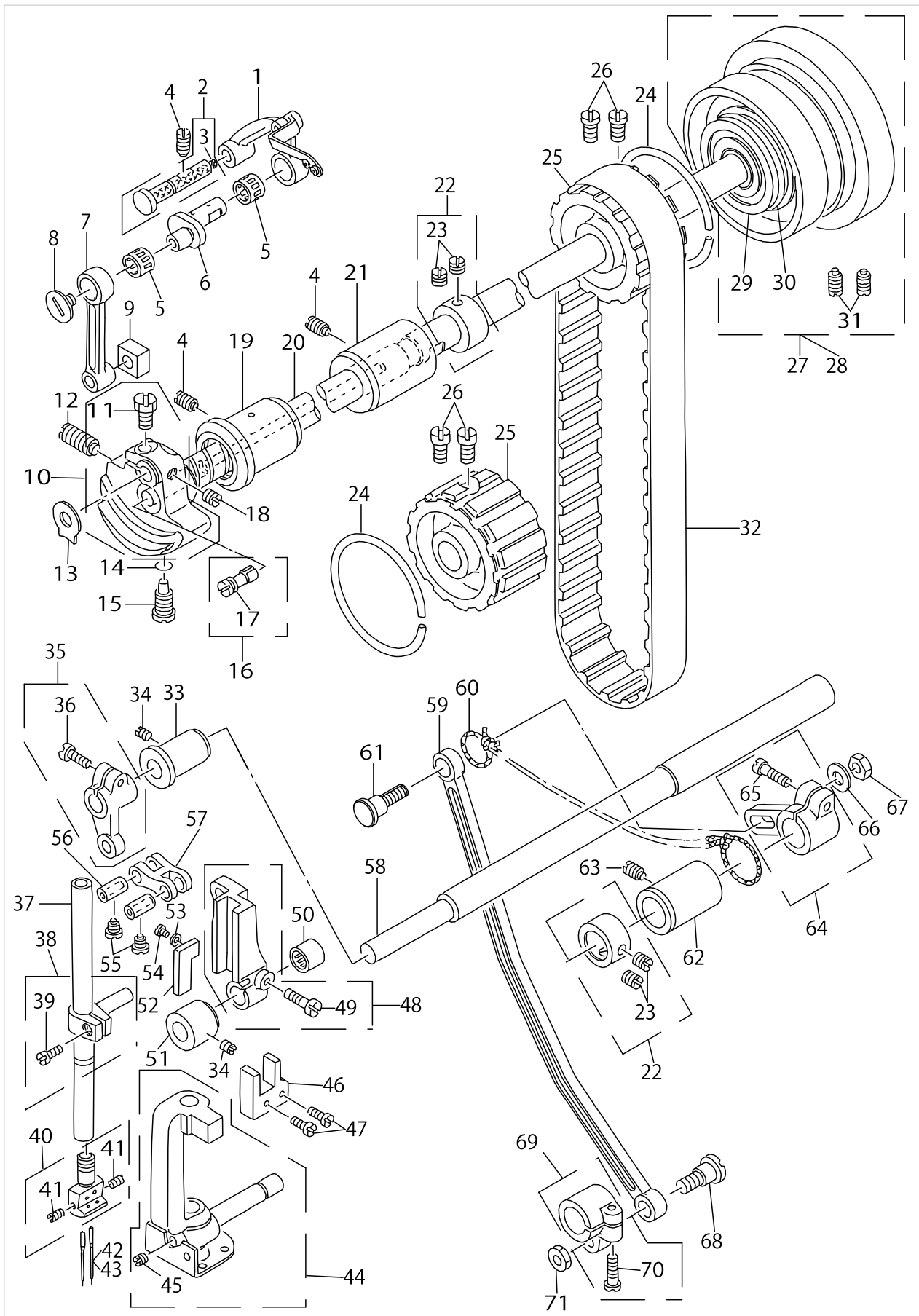
MAIN SHAFT, NEEDLE FEED & NEEDLE BAR COMPONENTS



MAIN SHAFT, NEEDLE FEED & NEEDLE BAR COMPONENTS

No.	Parts No.	Parts name	Remarks	Level	Cons	Qty
1	10102853	THREAD TAKE-UP LEVER ASM.				1
2	B19045520A0	CRANK SHAFT STUD ASM.				1
3	CQ3500000F0	OIL FELT		*		0.1
4	SS8151150SP	SCREW 15/64-28 L=10.5				3
5	B1905541B00	NEEDLE BEARING	SELECTIVE PARTS			2
6	10102705	NEEDLE BAR CRANK				1
7	10104701	NEEDLE BAR CRANK ROD				1
8	B1903552000	LEFT SCREW				1
9	B1414555000	SLIDE BLOCK				1
10	10102655	COUNTERWEIGHT ASM.				1
11	SS9661120CP	SCREW 1/4-40 L=10.5		*		1
12	SS8681950SP	SCREW 9/32-28 L=19				1
13	B1212552A00	COUNTERWEIGHT PROTECTING PLATE				1
14	RO044240100	RUBBER RING				1
15	SS7681650TP	SCREW 9/32-28 L=16				1
16	B12135520A0A	OIL AMOUNT ADJUSTING PIN ASM.				1
17	RO029180100	RUBBER RING		*		1
18	SS8660610TP	SCREW 1/4-40 L=6				1
19	10188902	MAIN SHAFT BUSHING, FRONT				1
20	10102507	MAIN SHAFT				1
21	10103000	MAIN SHAFT BUSHING, INTERMED.				1
22	22904155	MAIN SHAFT THRUST COLLAR ASM.				2
23	SS8660610TP	SCREW 1/4-40 L=6		*		4
24	B1214019000	SPROCKET RING				2
25	10103109	SPROCKET WHEEL				2
26	SS6661110SP	SCREW 1/4-40 L=11				4
27	10103257	HAND WHEEL ASM.				1
28	10161057	HAND WHEEL ASM.	FOR URBAN WHITE SPECIFICATION PARTS			1
29	SB120000100	BEARING D=20X47		*		1
30	RO437200200	RUBBER RING		*		1
31	SS8151550SP	SCREW 15/64-28 L=15		*		2
32	10103406	TIMING BELT				1
33	10121705	BUSHING				1
34	SS8150510TP	SCREW 15/64-28 L= 4.7				2
35	B29074150A0	DRIVING CRANK ASM.				1
36	SS6121220TP	SCREW 3/16-28 L=11.5		*		1
37	10104602	NEEDLE BAR				1
38	10104859	NEEDLE BAR CONNECTION ASM.				1
39	SS7090910SP	SCREW 9/64-40 L= 8.5		*		1
40	10147858	NEEDLE CLAMP ASM. 3/16	EXCHANGING GAUGE PARTS (SEE PAGE 25)			1
41	SS8080660TP	SCREW 1/8-44 L=5.5		*		2
42	MDP500B1400	NEEDLE DPX5 #14	EXCEPT JE			2
43	MC200500900	NEEDLE 134 90	FOR JE			2
44	10121069	NEEDLE BAR FRAME ASM.				1
45	SS8110510SP	SCREW 11/64-40 L=5		*		1
46	10121309	NEEDLE BAR FRAME POSITIONING B				1
47	SS7090910SP	SCREW 9/64-40 L= 8.5				2

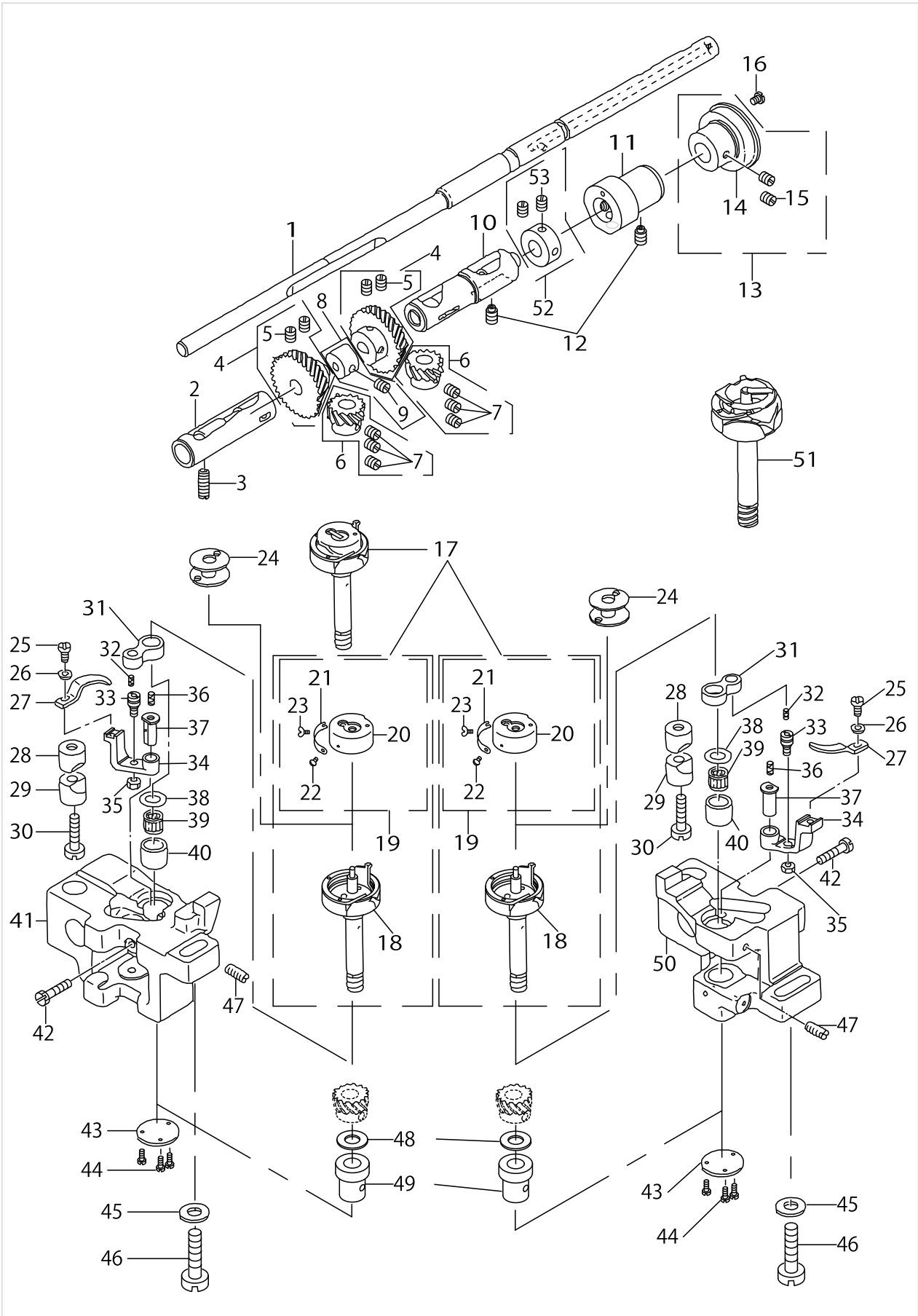
MAIN SHAFT, NEEDLE FEED & NEEDLE BAR COMPONENTS



MAIN SHAFT, NEEDLE FEED & NEEDLE BAR COMPONENTS

No.	Parts No.	Parts name	Remarks	Level	Cons	Qty
48	10121556	SLIDE BLOCK GUIDE ASM.				1
49	SS6121610TP	SCREW 3/16-28 L=15.5		*		1
50	B2913412N00	BEARING				1
51	10121408	BUSHING				1
52	B2915415000	FELT				1
53	WP0250516SD	WASHER 2.5X6X0.5				1
54	SS6060410TP	SCREW 3/32-56 L= 3.5				1
55	SS6090660TP	SCREW 9/64-40 L=6				2
56	B1412352A00	NEEDLE BAR LINK PIN, A	SELECTIVE PARTS			2
57	B2906415000	DRIVING LINK				1
58	10121606	NEEDLE BAR FRAME ROCK SHAFT				1
59	10122109	CONNECTING ROD				1
60	CQ200000000	OIL WICK				0.3
61	10179208	CONNECTING PIN				1
62	10106102	BUSHING				1
63	SS8151150SP	SCREW 15/64-28 L=10.5				1
64	10121952	DRIVING ARM ASM.				1
65	SS6121610TP	SCREW 3/16-28 L=15.5		*		1
66	WP0740516SP	WASHER 7.4X11.8X0.5				1
67	NS6680410SP	NUT 9/32-28				1
68	SD0900701TP	HINGE SCREW D= 9 H= 7				1
69	10122257	DRIVING ARM ASM.				1
70	SS6121610TP	SCREW 3/16-28 L=15.5		*		1
71	NS6680320SP	NUT 9/32-28				1

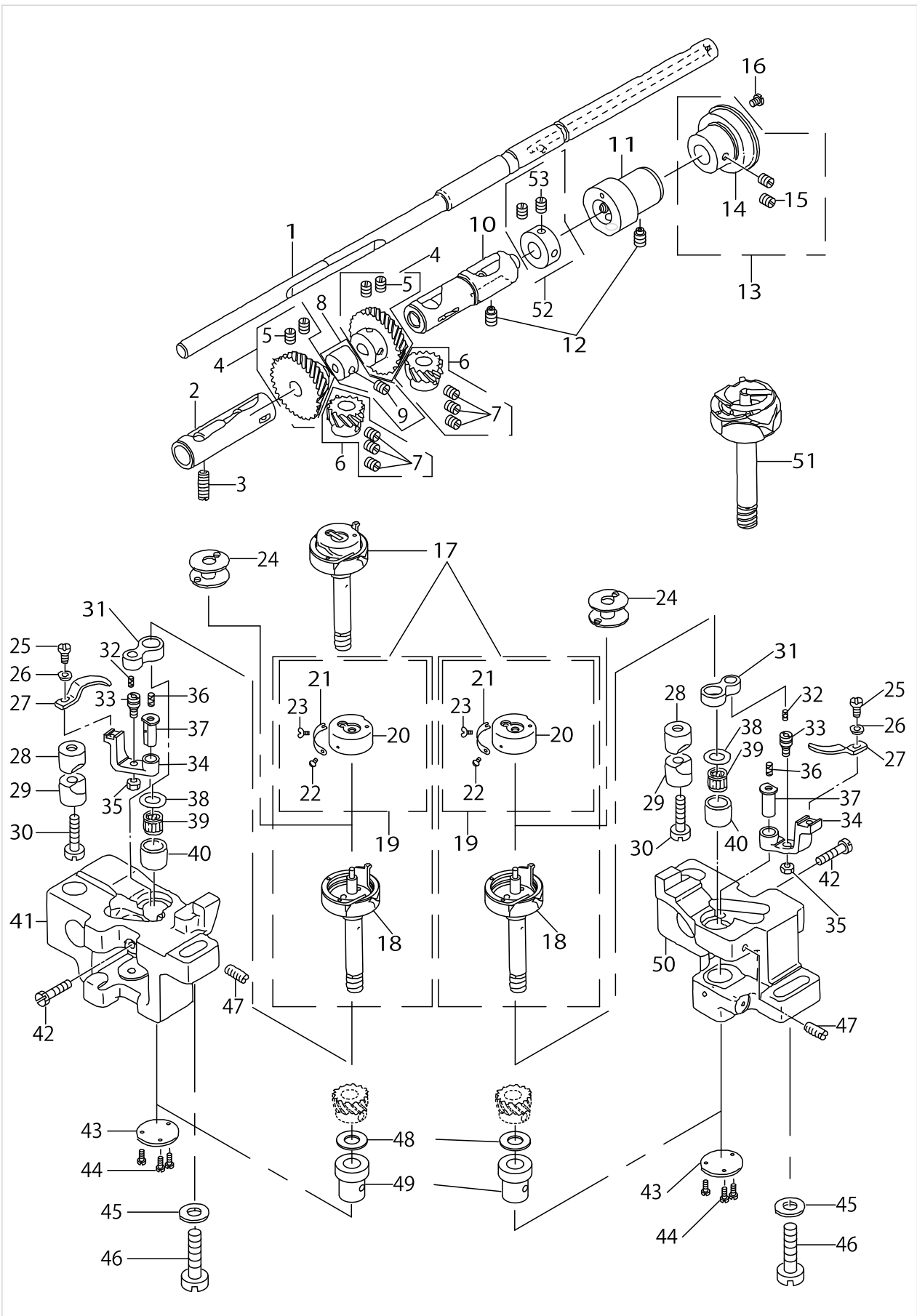
HOOK & HOOK DRIVING SHAFT COMPONENTS



HOOK & HOOK DRIVING SHAFT COMPONENTS

No.	Parts No.	Parts name	Remarks	Level	Cons	Qty
1	10108512	HOOK DRIVING SHAFT				1
2	B18025120A0A	BUSHING ASM., FRONT	EXCHANGING GAUGE PARTS SEE PAGE 21~25 FOR STITCH SPECIFICATIONS "A", "G" AND "S" AND PAGE 12 AND PAGE 26 FOR STITCH SPECIFICATION "F", RESPECTIVELY.			1
3	SS8152030SP	SCREW 15/64-28 L=20				1
4	B18165120A0	HOOK DRIVING SHAFT GEAR ASM.				2
5	SS8660810TP	SCREW 1/4-40 L=8		*		4
6	10112050	HOOK SHAFT GEAR ASM., A	SELECTIVE PARTS			2
7	SS8660530TP	SCREW 1/4-40 L= 4.5		*		6
8	B18405120A0	FEED DRIVING CAM ASM.				1
9	SS8150510TP	SCREW 15/64-28 L= 4.7		*		1
10	B18035150A0	BUSHING ASM., INTERMEDIATE	EXCHANGING GAUGE PARTS SEE PAGE 21~25 FOR STITCH SPECIFICATIONS "A", "G" AND "S" AND PAGE 12 AND PAGE 26 FOR STITCH SPECIFICATION "F", RESPECTIVELY.			1
11	10108611	PLUNGER BUSHING				1
12	SS8151150SP	SCREW 15/64-28 L=10.5				2
13	10108751	THRUST COLLAR ASM.				1
14	SB120000200	BEARING 20X42		*		1
15	SS8660610TP	SCREW 1/4-40 L=6		*		2
16	SS6110610TP	SCREW 11/64-40 L=6				1
17	10110153	HOOK ASM.				2
18	10110104	HOOK ASM.		*		2
19	10110252	BOBBIN CASE ASM.		*		2
20	10110203	BOBBIN CASE		*		2
21	10110401	BOBBIN CASE TENSION SPRING		*		2
22	10110500	TENSION SPRING INSTALLING SCRE		*		2
23	10110609	TENSION ADJUSTING SCREW		*		2
24	B9117051000	BOBBIN				2
25	SS6090810SP	SCREW 9/64-40 L= 7.5				2
26	WP0371016SD	WASHER 3.7X8X1				2
27	10111805	BOBBIN CASE OPENING LEVER				2
28	10109908	SADDLE INSTALLING BLOCK, UPPER				2
29	10112407	SADDLE INSTALLING BLOCK, LOWER				2
30	SS6153040SP	SCREW 15/64-28 L=30				2
31	B1820563000	BOBBIN CASE OPENING LEVER LINK				2
32	CQ202000000	OIL WICK				0.1
33	B1821051000	CRANK SCREW STUD				2
34	B1822051000	OPENING LEVER CRANK				2
35	NS6110420SP	NUT 11/64-40				2
36	CQ202000000	OIL WICK				0.1
37	B1823051000	OPENING LEVER CRANK PIN				2
38	10109809	THRUST WASHER, B	SELECTIVE PARTS			2
39	SB30953010C	NEEDLE BEARING 9.525X9.52	SELECTIVE PARTS			2
40	10109205	BUSHING				2
41	10109007	HOOK SHAFT SADDLE, LEFT				1
42	SS9111820SP	SCREW 11/64-40 L=18				2

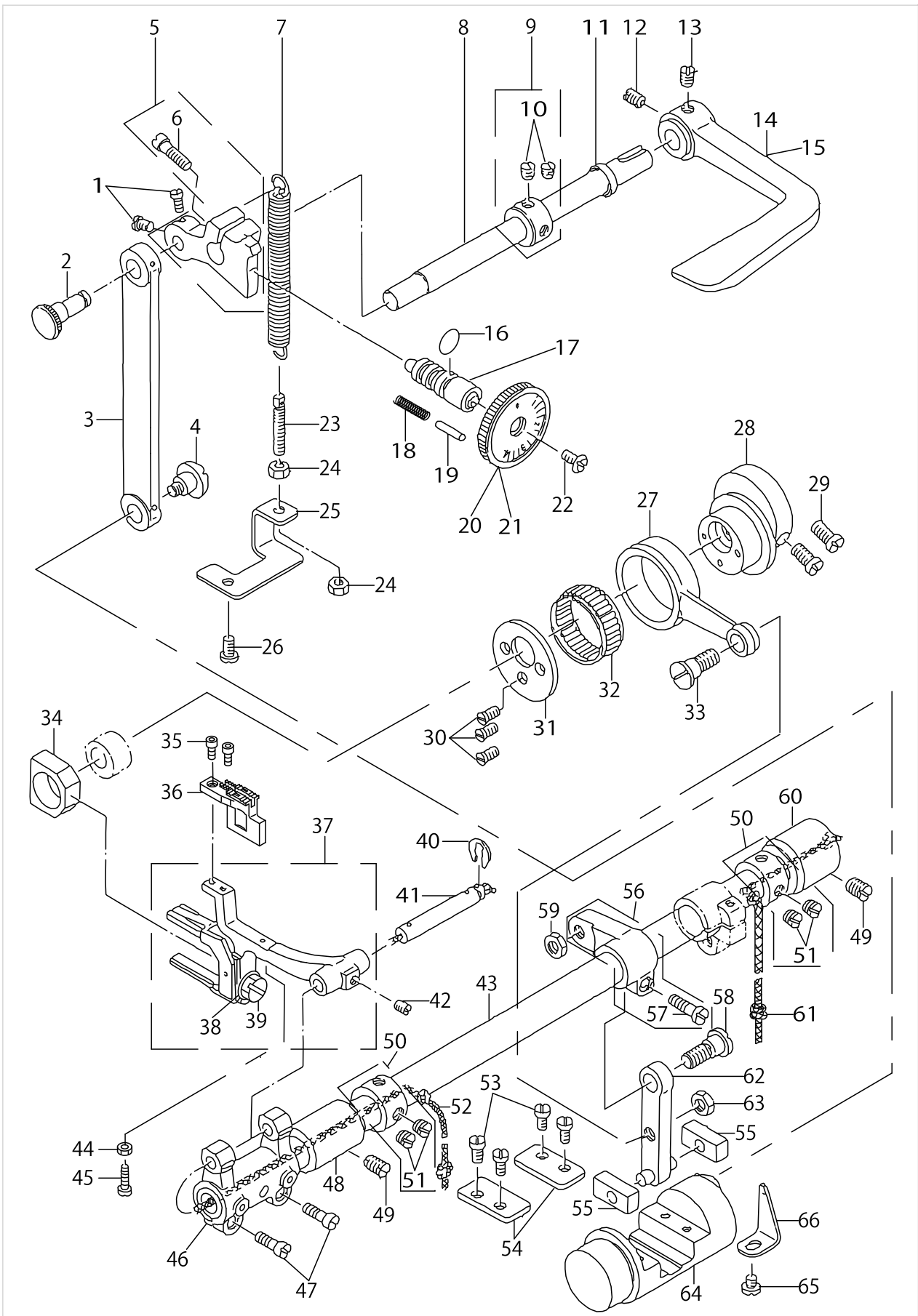
HOOK & HOOK DRIVING SHAFT COMPONENTS



HOOK & HOOK DRIVING SHAFT COMPONENTS

No.	Parts No.	Parts name	Remarks	Level	Cons	Qty
43	B1860512000	HOOK SHAFT SADDLE COVER				2
44	SS7060610SP	SCREW 3/32-56 L= 5.5				6
45	WP0850002SP	WASHER 8.5X18X1.6				2
46	SM7082550SP	SCREW M8 L=25				2
47	SS8151550SP	SCREW 15/64-28 L=15				2
48	B1818051B00	THRUST WASHER, B				2
49	10179307	BUSHING, LOWER				2
50	10109106	HOOK SHAFT SADDLE, RIGHT				1
51	10197655	LATCH HOOK ASM.	FOR JE			1
52	CS1470710SH	THRUST COLLAR ASM. D=14.72 W=7				1
53	SS8110410TP	SCREW 11/64-40 L= 3.5		*		2

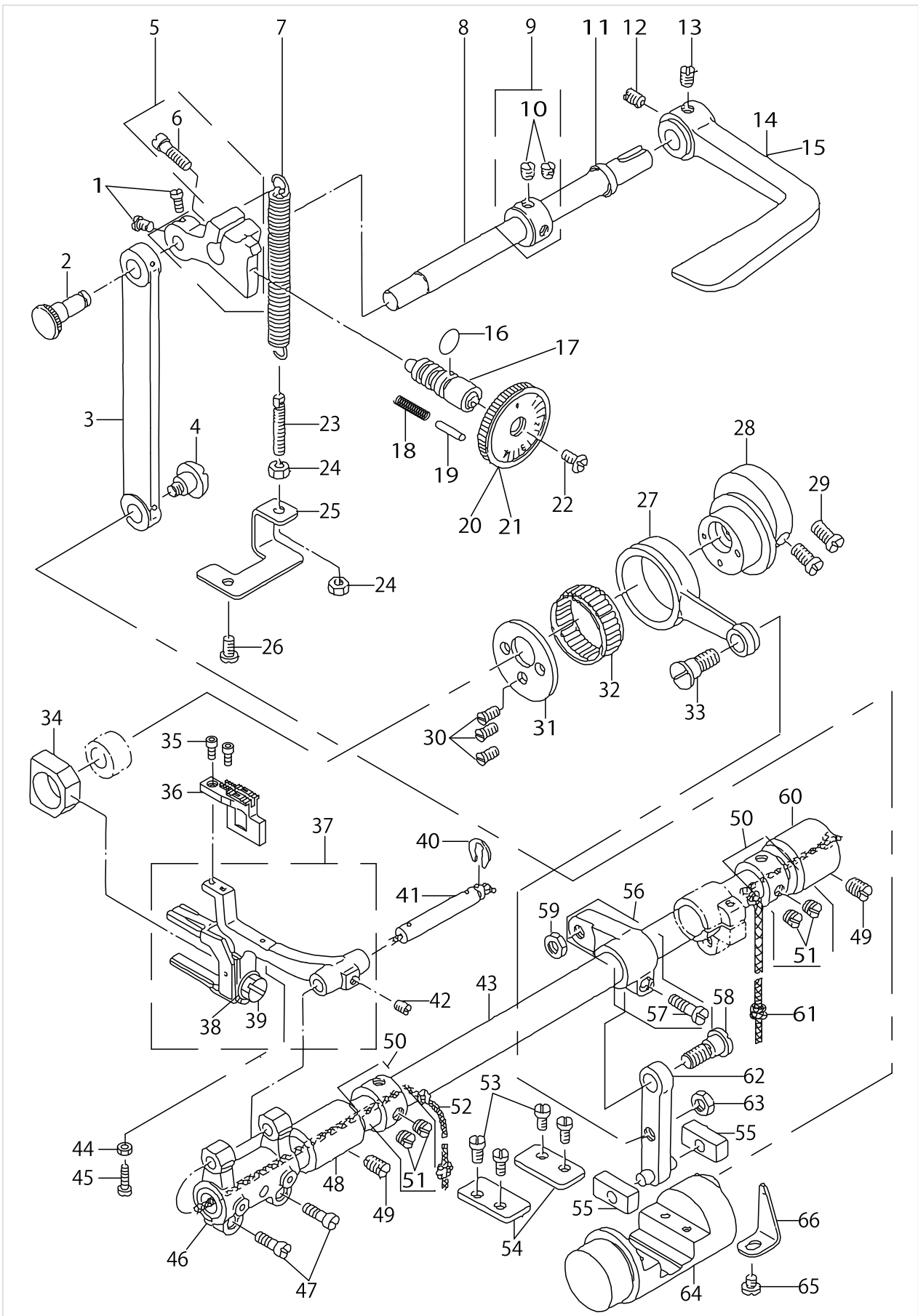
FEED MECHANISM COMPONENTS



FEED MECHANISM COMPONENTS

No.	Parts No.	Parts name	Remarks	Level	Cons	Qty
1	SS6110710TP	SCREW 11/64-40 L= 6.5				2
2	10107001	ROD PIN				1
3	10106904	FEED REGULATOR CONNECTING ROD				1
4	SD0900702TP	HINGE SCREW D=9 H=7				1
5	10107159	FEED REGULATOR ASM.				1
6	SS6121610TP	SCREW 3/16-28 L=15.5		*		1
7	B1513280000	TENSION SPRING				1
8	10107506	REVERSE FEED SHAFT				1
9	CS102121ASH	THRUST COLLAR ASM. D=10.2 W=12				1
10	SS8660610TP	SCREW 1/4-40 L=6		*		2
11	10108009	OIL SEAL				1
12	SS8660810TP	SCREW 1/4-40 L=8				1
13	SS8661040TP	SCREW 1/4-40 L=10				1
14	B1624380000	REVERSE FEED CONTROL LEVER				1
15	B162438000A	REVERSE FEED CONTROL LEVER	FOR URBAN WHITE SPECIFICATION PARTS			1
16	RO074240100	RUBBER RING				1
17	B1634470000	STITCH LENGTH REGULATING SCREW				1
18	22912109	FEED REGULATOR PIN SPRING				1
19	B1147555000	PIN				1
20	B16234700A0	STITCH DIAL ASM.	REPLACE THIS PARTS FOR STITCH SPECIFICATION "G.(SEE PAGE 11)			1
21	B16234700AA	STITCH DIAL ASM.	FOR URBAN WHITE SPECIFICATION PARTS			1
22	SS6121050SP	SCREW 3/16-28 L= 9.5				1
23	B1649161000	TENSION SPRING ADJUSTING SCREW				1
24	NS6110420SP	NUT 11/64-40				2
25	10107209	TENSION SPRING SUSPENSION BRAC				1
26	SS7110910SP	SCREW 11/64-40 L=8.5				1
27	10106300	FEED ROCKER SHAFT CONNECTING R				1
28	B1610484000	FEED DRIVE ECCENTRIC CAM				1
29	SS6661110SP	SCREW 1/4-40 L=11				2
30	SS2110930SP	SCREW 11/64-40 L=8.7				3
31	B1637432000	THRUST COLLAR				1
32	B1636581B00	NEEDLE BEARING B	SELECTIVE PARTS			1
33	SD0900701TP	HINGE SCREW D= 9 H= 7				1
34	B1610512000	FEED DRIVING SLIDE BLOCK				1
35	SS6580752TP	SCREW 1/8-40 L=7				2
36	B1613512D00	FEED DOG 3/16	EXCHANGING GAUGE PARTS SEE PAGE 21~25 FOR STITCH SPECIFICATIONS "A", "G" AND "S" AND PAGE 12 AND PAGE 26 FOR STITCH SPECIFICATION "F", RESPECTIVELY.			1
37	10107753	FEED BAR ASM.				1
38	WP0621016SD	WASHER 6.2X13X1		*		1
39	SS9151440CP	SCREW 15/64-28 L=14		*		1
40	RE0500711KP	SNAP RING 5				1
41	B1604012000A	FEED BAR SHAFT				1
42	SM8050502TP	SCREW M5 L=5				1
43	10106003	FEED ROCK SHAFT				1
44	NS6080210SP	NUT 1/8-44				1

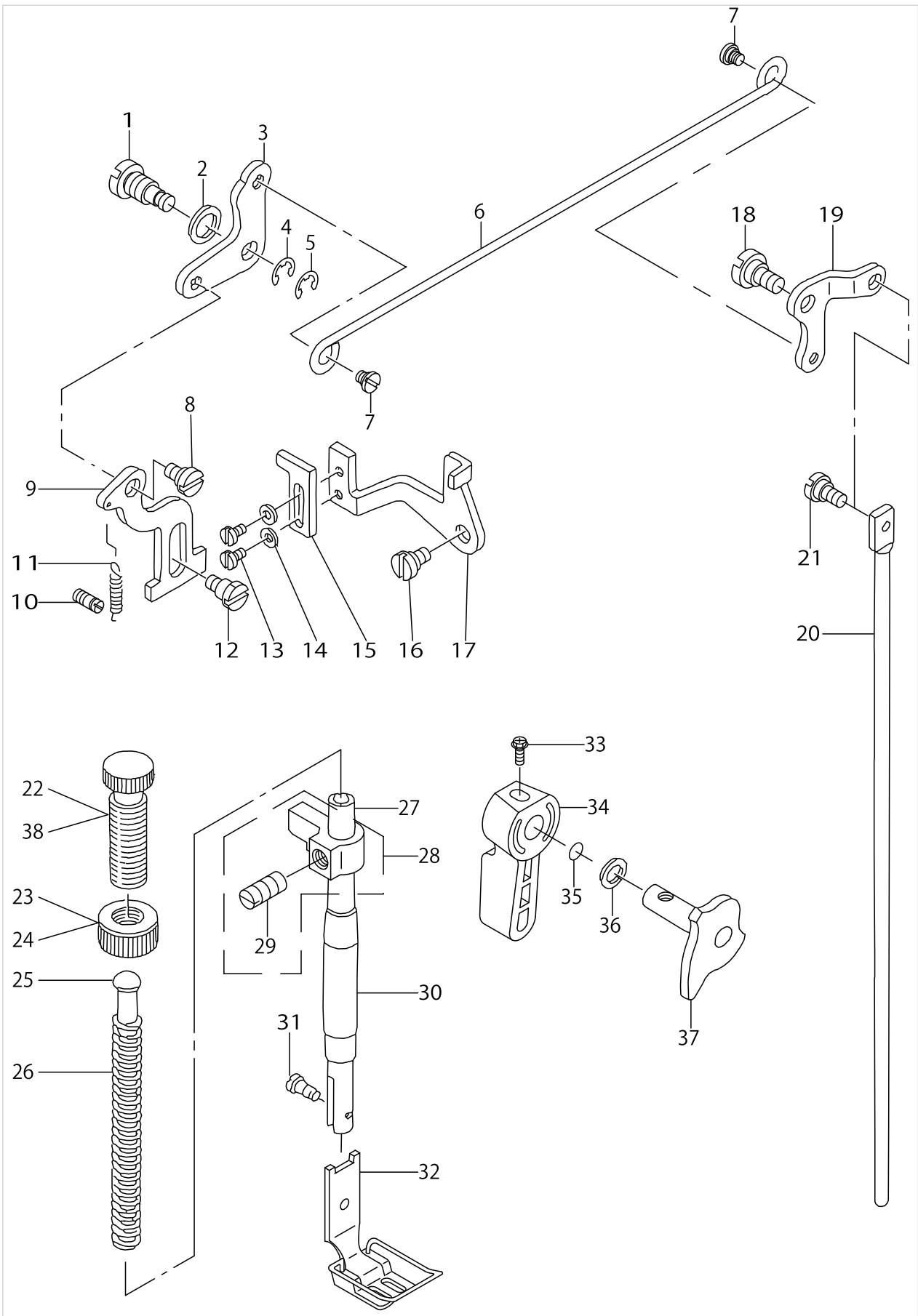
FEED MECHANISM COMPONENTS



FEED MECHANISM COMPONENTS

No.	Parts No.	Parts name	Remarks	Level	Cons	Qty
45	SS6081810SP	SCREW 1/8-44 L=18.0				1
46	B1603512000	FEED ROCKER				1
47	SS7111310TP	SCREW 11/64-40 L=12.8				2
48	10106102	BUSHING				1
49	SS8681130SP	SCREW 9/32-28 L=11				2
50	22904155	MAIN SHAFT THRUST COLLAR ASM.				2
51	SS8660610TP	SCREW 1/4-40 L=6		*		4
52	CQ252000000	OIL WICK				0.4
53	SS7110910SP	SCREW 11/64-40 L=8.5				4
54	10106805	PLATE				2
55	B1652470000	FEED DRIVING ROCKER BLOCK				2
56	10106557	FEED ROCKER SHAFT CRANK ASM.				1
57	SS6121610TP	SCREW 3/16-28 L=15.5		*		1
58	SD0900701TP	HINGE SCREW D= 9 H= 7				1
59	NS6680410SP	NUT 9/32-28				1
60	10106201	BUSHING				1
61	CQ303000000	OIL WICK				0.3
62	10106458	FEED ROCK CONNECTING ROD ASM.				1
63	NS6680410SP	NUT 9/32-28				1
64	10106656	FEED DRIVING ROCKER ASM.				1
65	SS7110510SP	SCREW 11/64-40 L=5				1
66	B1633470000	STOPPER PLATE				1

PRESSER BAR & TENSION RELEASE COMPONENTS(FOR LH-2178-7)

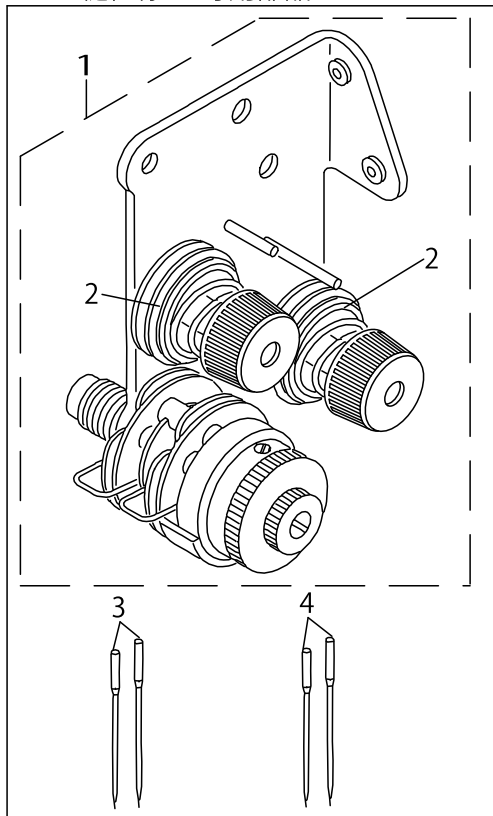


PRESSER BAR & TENSION RELEASE COMPONENTS(FOR LH-2178-7)

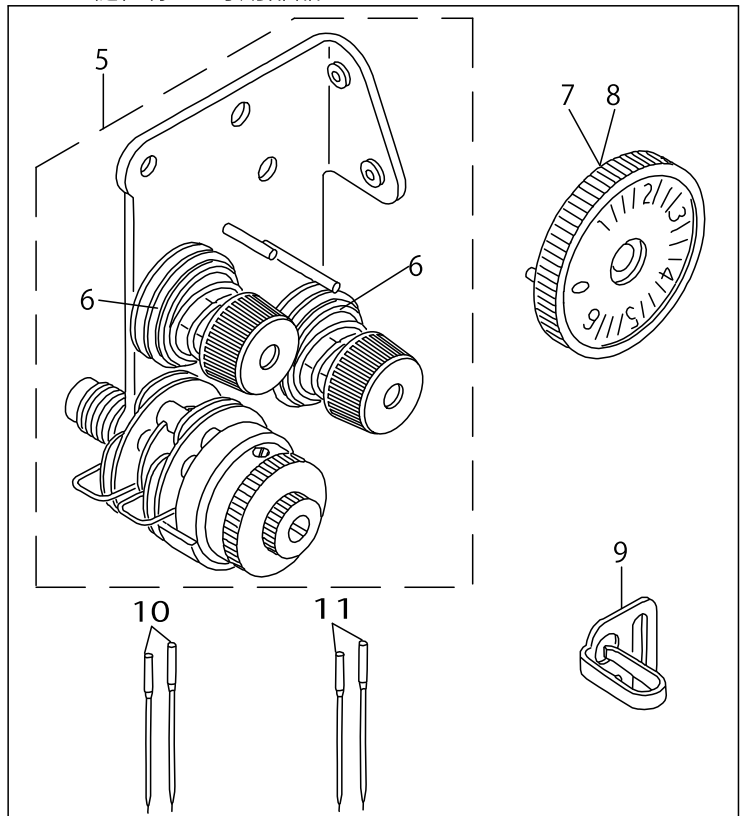
No.	Parts No.	Parts name	Remarks	Level	Cons	Qty
1	B1517415000	HINGE PIN				1
2	B3431581000	LIFTING LEVER GASKET				1
3	10105609	LIFTING LEVER LINK, LEFT				1
4	RE0600000K0	E-RING 6				1
5	B1523226000	SNAP RING				1
6	10125003	LIFTING LEVER CONNECTING ROD				1
7	11007101	HINGE SCREW				2
8	SD0630301SP	HINGE SCREW D=6.35 H=3				1
9	B1515415000	LIFTING LEVER				1
10	B1531415000	SUSPENSION				1
11	B1522180000	SPRING				1
12	SD0630275SP	HINGE SCREW D= 6.35 H= 2.7				1
13	SS7080520SP	SCREW 1/8-44 L=4.9				2
14	WP0330500MB	WASHER 3.3X6X0.5				2
15	B3135415000	TENSION RELEASE LINK, B				1
16	SD0640231SP	HINGE SCREW D= 6.35 H= 2.3				1
17	10123305	TENSION RELEASE LINK, A				1
18	SD0720331SP	HINGE SCREW D= 7.24 H= 3.3				1
19	10125102	LIFTING LEVER LINK, RIGHT				1
20	10125201	CONNECTING ROD, VERTICAL				1
21	SD0600322SD	HINGE SCREW D=6 H=3.2				1
22	B1509555000	PRESSER SPRING REGULATOR				1
23	B1511555000	NUT				1
24	11071701	NUT	FOR URBAN WHITE SPECIFICATION PARTS			1
25	22907703	PRESSER GUIDE BAR				1
26	22907406	PRESSER SPRING	REPLACE THIS PARTS FOR STITCH SPECIFICATION "F", (SEE PAGE 12)			1
27	B1501581000	PRESSER BAR				1
28	10178754	PRESSER BAR BUSHING LOWER				1
29	SS8660610TP	SCREW 1/4-40 L=6		*		1
30	22907109	PRESSER BAR BUSHING, LOWER				1
31	SS7090910TP	SCREW 9/64-40 L= 8.5				1
32	10152759	PRESSER FOOT ASM. 3/16	EXCHANGING GAUGE PARTS SEE PAGE 21~25 FOR STITCH SPECIFICATIONS "A", "G" AND "S" AND PAGE 12 AND PAGE 26 FOR STITCH SPECIFICATION "F",			1
33	B1521555000	SCREW				1
34	11071800	HAND LIFTER				1
35	RO037180100	RUBBER RING				1
36	WP0740516SP	WASHER 7.4X11.8X0.5				1
37	10105575	HAND LIFTER CAM ASM.				1
38	11071602	PRESSER SPRING REGULATOR	FOR URBAN WHITE SPECIFICATION PARTS			1

EXCLUSIVE PARTS BY STITCH SPECIFICATION (1)

(1) EXCLUSIVE PARTS FOR STITCH SPECIFICATION "A"
縫仕様"A"専用部品



(2) EXCLUSIVE PARTS FOR STITCH SPECIFICATION "G"
縫仕様"G"専用部品

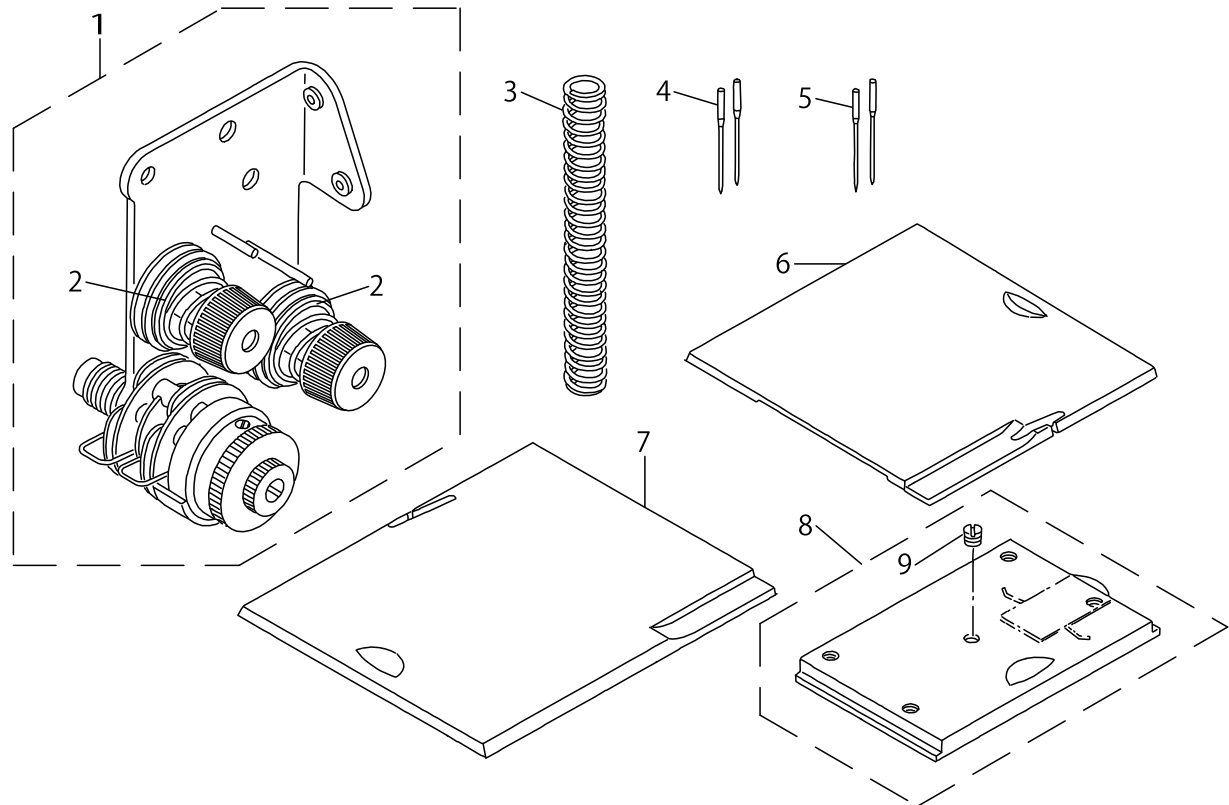


EXCLUSIVE PARTS BY STITCH SPECIFICATION (1)

No.	Parts No.	Parts name	Remarks	Level	Cons	Qty
1	10124758	TENSION POST BASE ASM.				1
2	D3129555D00	THREAD TENSION SPRING		*		2
3	MSG19060900	NEEDLE SGX1906 #9	EXCEPT JE			2
4	MC200500650	NEEDLE 134 NM65	FOR JE			2
5	10124774	TENSION POST BASE ASM.				1
6	B3129526000	TENSION SPRING (1.2)		*		2
7	10107357	STITCH DIAL ASM.				1
8	10161156	STITCH DIAL ASM.	FOR URBAN WHITE SPECIFICATION PARTS			1
9	10188001	THREAD GUIDE, B				1
10	MDP500B2100	NEEDLE DPX5 #21	EXCEPT JE			2
11	MC200501300	NEEDLE 134 NM130	FOR JE			2

EXCLUSIVE PARTS BY STITCH SPECIFICATION (2)

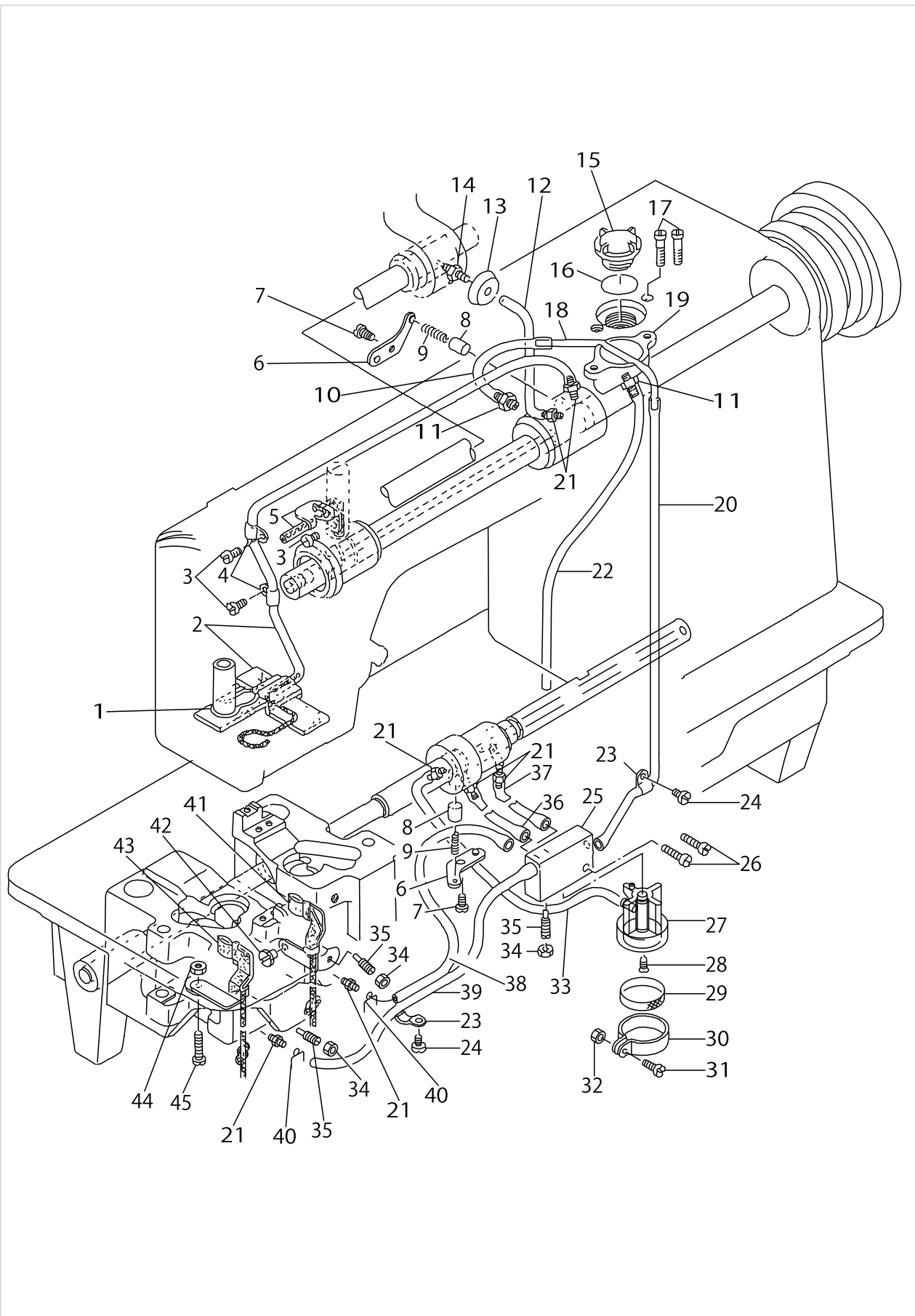
(3) EXCLUSIVE PARTS FOR STITCH SPECIFICATION "F"
縫仕様"F"専用部品



EXCLUSIVE PARTS BY STITCH SPECIFICATION (2)

No.	Parts No.	Parts name	Remarks	Level	Cons	Qty
1	10124758	TENSION POST BASE ASM.				1
2	D3129555D00	THREAD TENSION SPRING		*		2
3	B1505227T00A	PRESSER SPRING T				1
4	MSG19650900	NEEDLE SGX1965 #9	EXCEPT JE			2
5	MC200500650	NEEDLE 134 NM65	FOR JE			2
6	10185205	BED SLIDE, RIGHT	FOR A,B TYPES FOR TAPE ATTA- CHING WITH STIT- CH SPECIFICATI- ON"F", (ONLY S TYPE IS COMMON TO STITCH SPEC- IFICATION"S". SEE PAGE 25)			1
7	10185106	BED SLIDE, LEFT	FOR A,B TYPES FOR TAPE ATTA- CHING WITH STIT- CH SPECIFICATI- ON"F", (ONLY S TYPE IS COMMON TO STITCH SPEC- IFICATION"S". SEE PAGE 25)			1
8	10185056	BED SLIDE ASM.	FOR A,B TYPES FOR TAPE ATTA- CHING WITH STIT- CH SPECIFICATI- ON"F", (ONLY S TYPE IS COMMON TO STITCH SPEC- IFICATION"S". SEE PAGE 25)			1
9	SS8110320SP	SCREW 11/64-40 L= 3.2	FOR A,B TYPES FOR TAPE ATTA- CHING WITH STIT- CH SPECIFICATI- ON"F", (ONLY S TYPE IS COMMON TO STITCH SPEC- IFICATION"S". SEE PAGE 25)	*		1

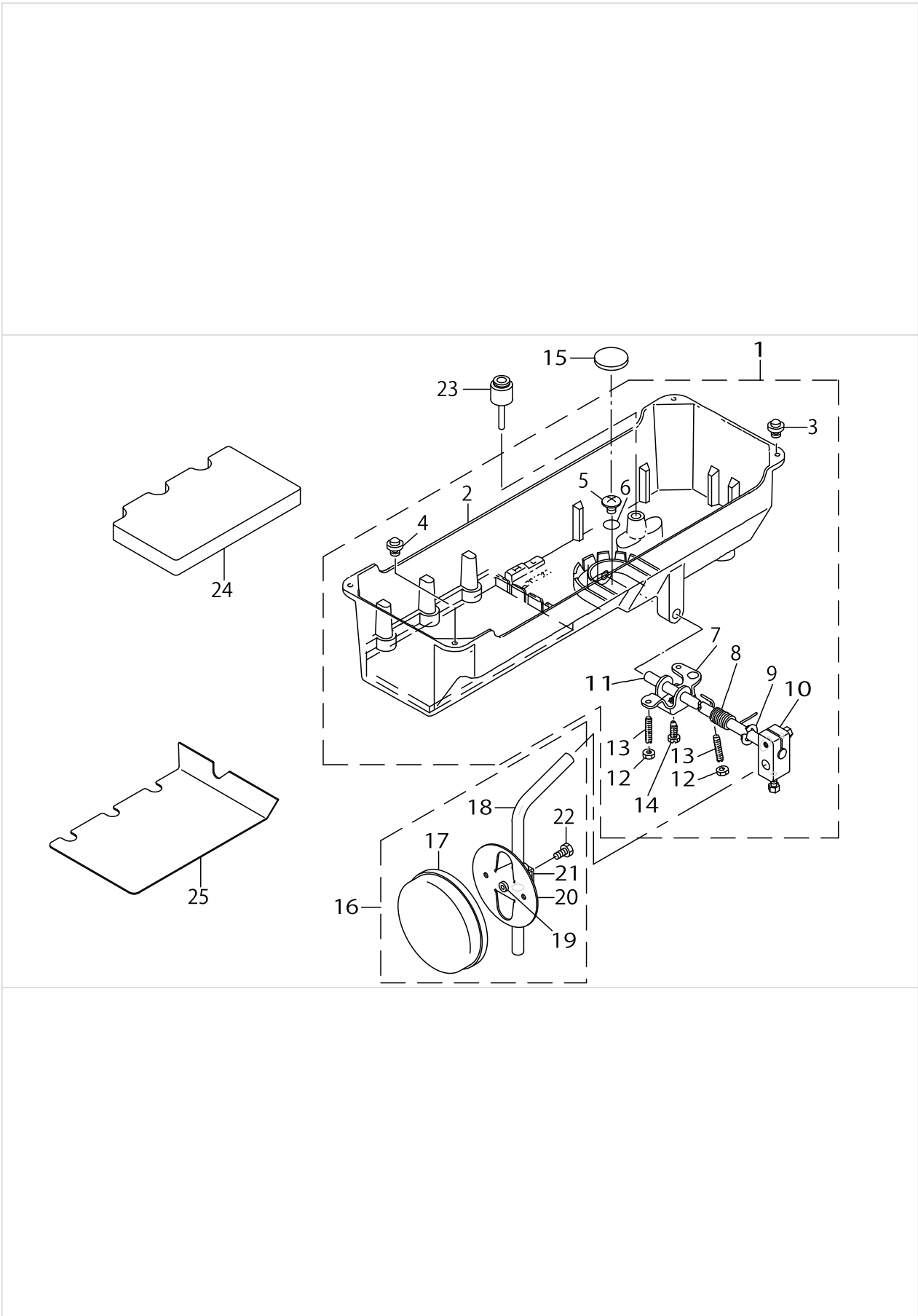
LUBRICATION COMPONENTS



LUBRICATION COMPONENTS

No.	Parts No.	Parts name	Remarks	Level	Cons	Qty
1	22925101	OIL FELT PRESSER				1
2	10125755	OIL RETURN FELT ASM.				1
3	SS7110710SP	SCREW 11/64-40 L=7				3
4	B3538112000	OIL RETURN TUBE HOLDER				2
5	10125557	OIL WICK HOLDER ASM.				1
6	B3524552000	PLUNGER THRUST PLATE				2
7	SS7110710SP	SCREW 11/64-40 L=7				2
8	B3534155000	PLUNGER				2
9	B1214038000	PLUNGER SPRING				2
10	BP300000000	VINYL PIPE				0.1
11	SQ1150451MZ	CONNECTING SCREW				2
12	BP300000000	VINYL PIPE				0.1
13	10127009	CONNECTING SCREW CAP				1
14	10126902	OIL PIPE CONNECTING SCREW				1
15	B3530555000	OIL SIGHT WINDOW				1
16	RO195240100	RUBBER RING				1
17	SS7111810SP	SCREW 11/64-40 L=18				2
18	10126001	OIL TUBE				1
19	10125904	OIL TANK				1
20	BP300000000	VINYL PIPE				0.4
21	SQ1110401MZ	CONNECTING SCREW				7
22	BP300000000	VINYL PIPE				0.3
23	B3538112000	OIL RETURN TUBE HOLDER				2
24	SS7110710SP	SCREW 11/64-40 L=7				2
25	10623403	BASE				1
26	SS6111610SP	SCREW 11/64-40 L=16				2
27	22619001	SUCTION				1
28	SS2110930SP	SCREW 11/64-40 L=8.7				1
29	B1851512000	FILTER SCREEN				1
30	B1850512000	BUSHING HOLDER				1
31	SS7090910SP	SCREW 9/64-40 L= 8.5				1
32	NS6090310SP	NUT 9/64-40				1
33	BP300000000	VINYL PIPE				0.2
34	NS6110420SP	NUT 11/64-40				3
35	B1834512000A	OIL ADJUSTING SCREW				3
36	BP300000000	VINYL PIPE				0.1
37	BP300000000	VINYL PIPE				0.1
38	BP300000000	VINYL PIPE				0.3
39	BP300000000	VINYL PIPE				0.3
40	10126803	OIL TUBE HOLDER				2
41	10126654	OIL WICK HOLDER ASM. RIGHT				1
42	SS7110340SP	SCREW 11/64-40 L= 3.2				1
43	10126555	OIL WICK HOLDER ASM. LEFT				1
44	NS6110310SP	NUT 11/64-40				1
45	SS7111410SP	SCREW 11/64-40 L=14				1

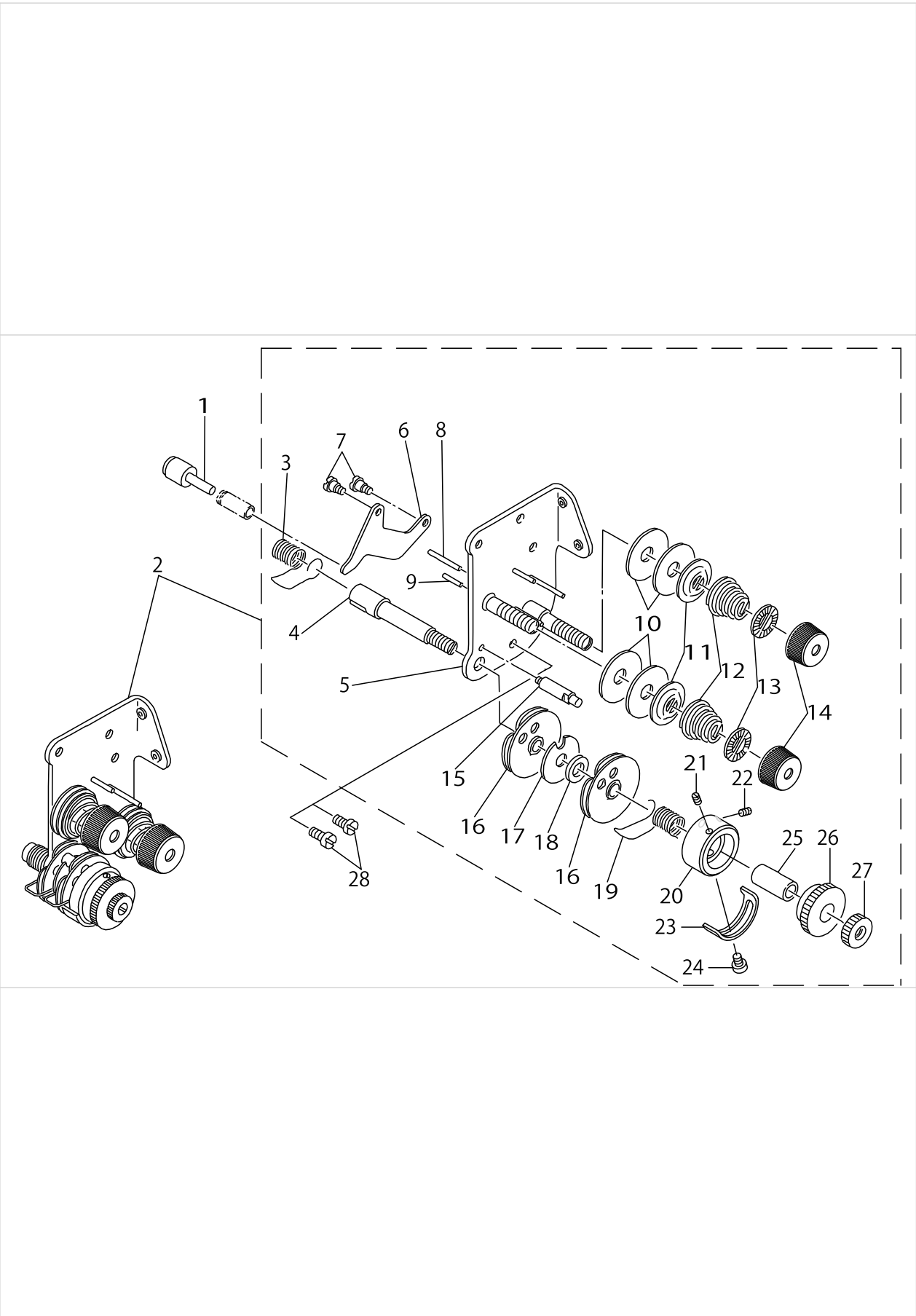
OIL RESERVOIR & KNEE LIFTER COMPONENTS



OIL RESERVOIR & KNEE LIFTER COMPONENTS

No.	Parts No.	Parts name	Remarks	Level	Cons	Qty
1	10162253	OIL RESERVOIR ASM.				1
2	10162204	OIL RESERVOIR		*		1
3	10162600	RUBBER CUSHION		*		2
4	11047107	RUBBER CUSHION		*		2
5	SM0081001SD	SCREW		*		1
6	RO098240100	RUBBER RING		*		1
7	11024015	CONNECTING ROT, VERTICAL		*		1
8	11024106	SPRING		*		1
9	RE1000000K0	E-RING 10		*		1
10	22932453	BRACKET ASM.		*		1
11	11024205	KNEE PRESS ROD		*		1
12	NM6060001SE	NUT M6		*		2
13	SM8063012TR	SCREW M6 L=30		*		2
14	SM9061853SR	SCREW M6 L=17.5		*		1
15	B8228125000	OIL RESERVOIR MAGNET				1
16	22934251	KNEE PAD PLATE ASM.				1
17	22934509	KNEE PAD PLATE COVER		*		1
18	22934608	KNEE PAD UPRIGHT SHAFT		*		1
19	22934400	KNEE PAD PLATE RUBBER		*		1
20	22934202	KNEE PAD PLATE		*		1
21	22934301	KNEE PAD PLATE SUPPORT		*		1
22	SM9061203SE	SCREW M6 L=12		*		1
23	11024304	KNEE PRESS LIFTER ROD				1
24	10162501	OIL RESERVOIR SPACER, A				1
25	10162402	DUST COVER	FOR JE			1

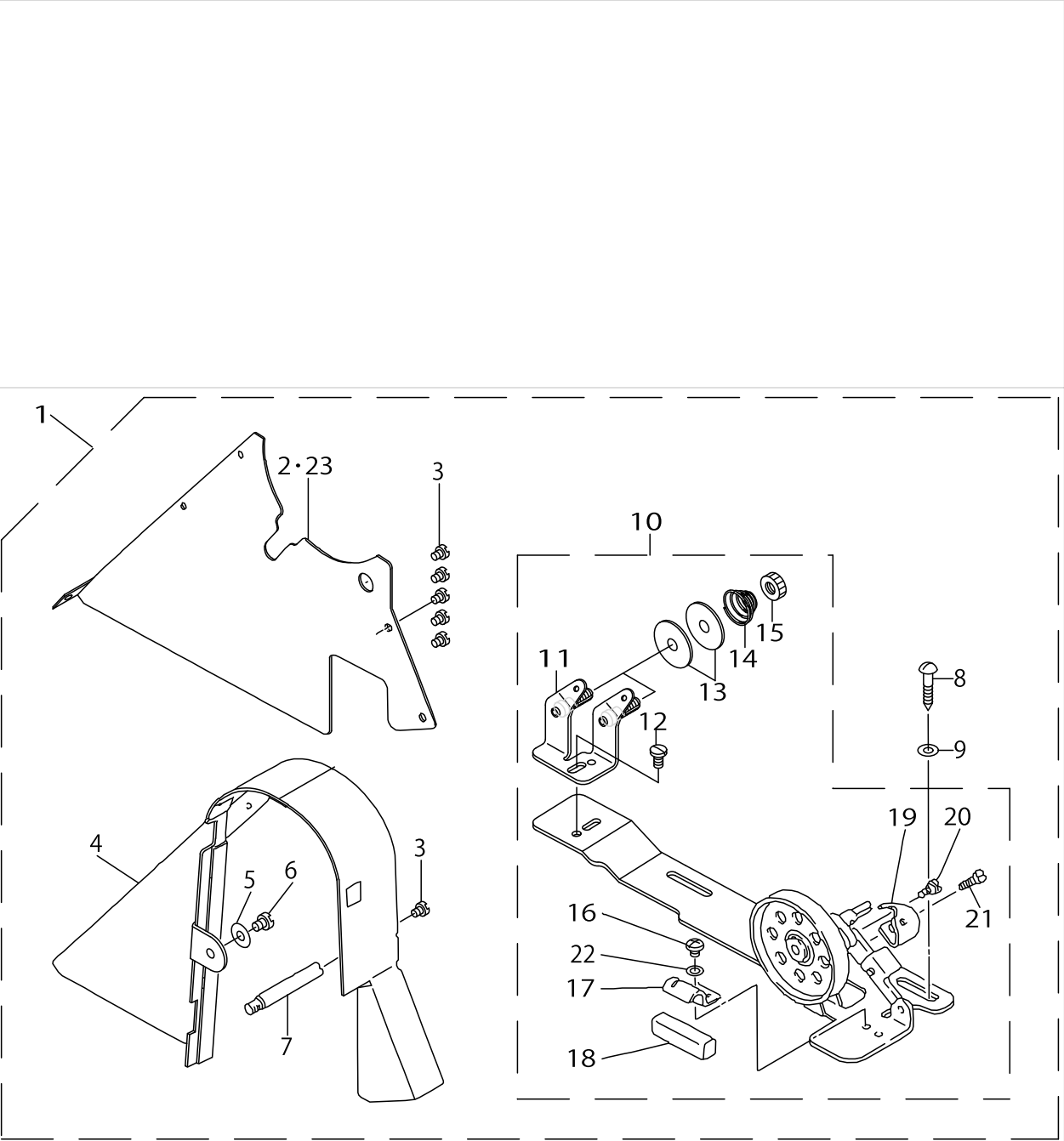
THREAD TENSION CONTROLLER COMPONENTS



THREAD TENSION CONTROLLER COMPONENTS

No.	Parts No.	Parts name	Remarks	Level	Cons	Qty
1	10123453	KNEE PRESS LIFTER ROD ASM.				1
2	10124766	TENSION POST BASE ASM.	EXCHANGING BY STITCH SPECIFICATION. SEE PAGE 11 FOR STITCH SPECIFICATIONS "A" AND "G" AND PAGE 12 FOR STITCH SPECIFICATION "F", RESPECTIVELY.	*		1
3	B3128051000	THREAD TAKE-UP SPRING, A		*		1
4	10124501	THREAD TAKE-UP SPRING STUD		*		1
5	10124055	TENSION POST ASM.		*		1
6	B3134521000	TENSION RELEASE LEVER		*		1
7	SD0470281SP	HINGE SCREW D=4.7 H=2.8		*		2
8	B3127527000	PIN B		*		1
9	B3127051000	TENSION RELEASE PIN, SHORT		*		1
10	B3126051000	TENSION DISC		*		4
11	B3132051000	TENSION DISC HOLDER		*		2
12	B3129012A00	TENSION SPRING	EXCHANGING BY STITCH SPECIFICATION. SEE PAGE 11 FOR STITCH SPECIFICATIONS "A" AND "G" AND PAGE 12 FOR STITCH SPECIFICATION "F", RESPECTIVELY.	*		2
13	B3120125000	ROTATING STOPPER		*		2
14	11072204	TENSION NUT		*		2
15	B3143527000	TAKE-UP SPRING GUIDE STUD		*		1
16	B31375270A0	TAKE-UP SPRING GUIDE ASM.		*		2
17	B3142527000	TAKE-UP SPRING GUIDE PLATE		*		1
18	B3139527000	COLLAR		*		1
19	B3128527000	THREAD TAKE-UP SPRING B		*		1
20	22617609	THREAD TENSION POST		*		1
21	22618904	SET SCREW		*		1
22	22618904	SET SCREW		*		1
23	B3138527000	ADJUSTING PLATE B		*		1
24	SS7090520SP	SCREW 9/64-40 L= 4.5		*		1
25	B3141527000	PRESSER COLLAR		*		1
26	B3125527000	TAKE-UP SPRING GUIDE		*		1
27	B3125012000	THREAD TENSION NUT		*		1
28	SS7110710SP	SCREW 11/64-40 L=7		*		2

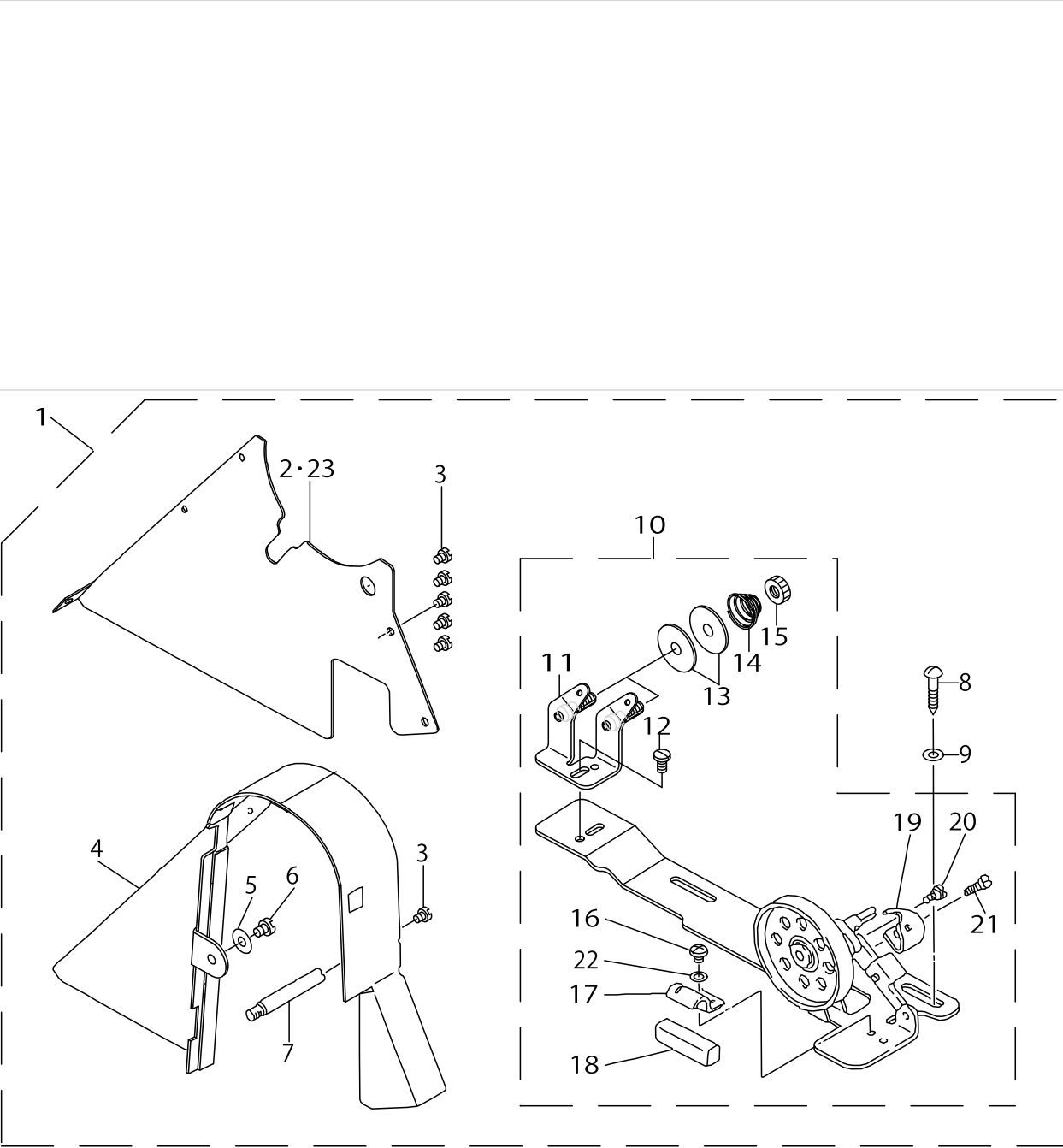
BELT COVER & BOBBIN WINDER COMPONENTS



BELT COVER & BOBBIN WINDER COMPONENTS

No.	Parts No.	Parts name	Remarks	Level	Cons	Qty
1	10128056	BELT COVER ASM.				1
2	10161552	BELT COVER ASM.	FOR URBAN WHITE SPECIFICATION PARTS			1
3	10128106	BELT COVER PLATE		*		1
4	10419307	BELT COVER PLATE	FOR URBAN WHITE SPECIFICATION PARTS	*		1
5	SS7110510SP	SCREW 11/64-40 L=5		*		6
6	10128007	BELT COVER		*		1
7	10958759	BELT COVER	FOR URBAN WHITE SPECIFICATION PARTS	*		1
8	WP0621016SD	WASHER 6.2X13X1		*		1
9	SS7150740SP	SCREW 15/64-28 L=7		*		1
10	10039105	BELT COVER SUPPORT STUD		*		1
11	SK3482500SC	WOOD SCREW D=4.8 L=25		*		2
12	WP0501016SC	WASHER 5X10.5X1		*		2
13	11077567	BOBBIN WINDER COMPL.		*		1
14	11078250	THREAD TENSION BRACKET ASM.		*		1
15	SS7110840SP	SCREW 11/64-40 L=7.8		*		1
16	B3126012000	THREAD TENSION DISK		*		2
17	B3129012B00	THREAD TENSION SPRING		*		1
18	B3125012000	THREAD TENSION NUT		*		1
19	SS4110515SP	SCREW 11/64-40 L=5		*		1
20	11078102	PRESSER PLATE		*		1
21	B3211555000	RUBBER BRAKE		*		1
22	11078003	POSITIONING FINGER		*		1
23	SD0490261SP	HINGE SCREW D=4.9 H=2.6		*		1
24	SS7081310SP	SCREW 1/8-44 L=12.5		*		1
25	WP0480856SP	WASHER 4.8X8.4X0.8		*		1

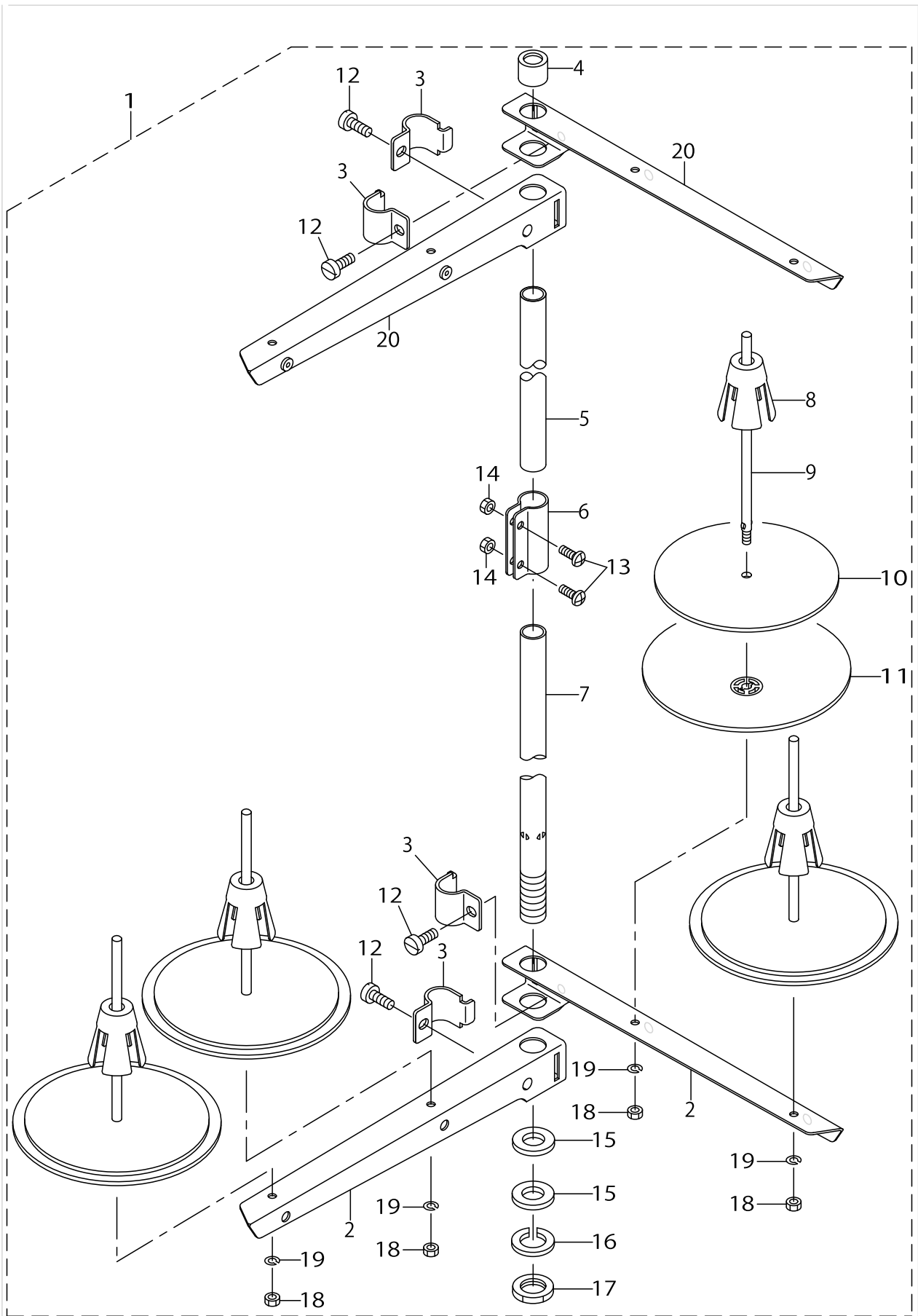
BELT COVER & BOBBIN WINDER COMPONENTS (SPECIAL PARTS)



BELT COVER & BOBBIN WINDER COMPONENTS (SPECIAL PARTS)

No.	Parts No.	Parts name	Remarks	Level	Cons	Qty
1	10128064	BELT COVER ASM.				1
2	10128106	BELT COVER PLATE		*		1
3	SS7110510SP	SCREW 11/64-40 L=5		*		6
4	10128007	BELT COVER		*		1
5	WP0621016SD	WASHER 6.2X13X1		*		1
6	SS7150740SP	SCREW 15/64-28 L=7		*		1
7	10039105	BELT COVER SUPPORT STUD		*		1
8	SK3482500SC	WOOD SCREW D=4.8 L=25		*		2
9	WP0501016SC	WASHER 5X10.5X1		*		2
10	22621155	THREAD WINDER ASM.		*		1
11	22621056	TENSION BAR BASE		*		1
12	SS7110840SP	SCREW 11/64-40 L=7.8		*		1
13	B3126012000	THREAD TENSION DISK		*		4
14	B3129012B00	THREAD TENSION SPRING		*		2
15	B3125012000	THREAD TENSION NUT		*		2
16	SS4110515SP	SCREW 11/64-40 L=5		*		1
17	11078102	PRESSER PLATE		*		1
18	B3211555000	RUBBER BRAKE		*		1
19	22621106	BOBBIN PRESSER		*		1
20	SD0490261SP	HINGE SCREW D=4.9 H=2.6		*		1
21	SS7081310SP	SCREW 1/8-44 L=12.5		*		1
22	WP0480856SP	WASHER 4.8X8.4X0.8		*		1
23	10419307	BELT COVER PLATE	FOR URBAN WHITE SPECIFICATION PARTS	*		1

THREAD STAND COMPONENTS



THREAD STAND COMPONENTS

No.	Parts No.	Parts name	Remarks	Level	Cons	Qty
1	26910158	THREAD STANDING DEVICE ASM.				1
2	22930507	SPOOL REST ARM		*		2
3	22930705	THREAD GUIDE ARM JOINT		*		4
4	22931406	SPOOL REST ROD RUBBER CAP		*		1
5	22930408	SPOOL REST ROD, UPPER		*		1
6	22931307	SPOOL REST ROD JOINT		*		1
7	22930309	SPOOL REST ROD, LOWER		*		1
8	22931109	SPOOL RETAINER		*		4
9	22931000	SPOOL PIN		*		4
10	22930903	SPOOL REST CUSHION		*		4
11	22930804	SPOOL REST		*		4
12	SM6061610SC	SCREW M6 L=16		*		4
13	SM4051405SE	SCREW M5 L=14		*		2
14	NM6050001SE	NUT M5		*		2
15	WP1612616SE	WASHER 16X30X2.6		*		2
16	WS1643202KR	SPRING WASHER		*		1
17	NM6160511SE	NUT M16X1.5		*		1
18	NM6050001SE	NUT M5		*		4
19	WS0510002KN	SPRING WASHER		*		4
20	22930556	THREAD STANDING ARM ASM.		*		2

FOR STITCH SPECIFICATION "S","A","G" (1)

Stitch spec. 縫仕様		S	★		★		★		★	
		A	★		★		★		★	
Needle gauge size 針幅		G	Presser Foot asm. 押え(組)							
			1.6		2		2		2	
Code ゲージ 記号										
	inch	mm	Ref.No.	Part No.	Ref.No.	Part No.	Ref.No.	Part No.	Ref.No.	Part No.
▲◆ A	3/32	2.4	1	101-50050						
◆ B	1/8	3.2	2	101-50159		*				
◆ C	5/32	4.0	3	101-50258	20	101-52650		*		*
D	3/16	4.8	4	101-50357	21	101-52759	37	101-56651		*
E	7/32	5.6	5	101-50456	22	101-52858		*		
F	1/4	6.4	6	101-50555	23	101-52957	38	101-56552	50	101-55059
G	9/32	7.1	7	101-50654	24	101-53054		*		*
H	5/16	7.9	8	101-50753	25	101-53153	39	101-56750	51	101-55158
K	3/8	9.5	9	101-50852	26	101-53252	40	101-56859		
W	1/16	11.1	10	101-50951	27	101-53351		*		
L	1/2	12.7	11	101-51058	28	101-53450	41	101-56958		
M	5/8	15.9	12	101-51157	29	101-53559	42	101-57055		
N	3/4	19.1	13	101-51256	30	101-53658	43	101-57154		
P	7/8	22.2	14	101-51355	31	101-53757	44	101-57253		*
Q	1	25.4	15	101-51454	32	101-53856	45	101-57352		
R	1 1/8	28.6	16	101-51553	33	101-53955	46	101-57451		
S	1 1/4	31.8	17	101-51652	34	101-54052	47	101-57550		
T	1 3/8	34.9	18	101-51751	35	101-54151	48	101-57659		
U	1 1/2	38.1	19	101-51750	36	101-54150	49	101-57658		

- ★ ... Standard specification 標準仕様
- ☆ ... Special specification 特別仕様
- * ... Special order part 特別注文部品
- ◆ ... Except stitch specification "G" 縫仕様 "G" は除く
- ▲ ... Except stitch specification "S" 縫仕様 "S" は除く

See also p.11 for stitch specifications "A","G"
縫仕様 "A","G" については11ページも併せてご参照ください。

FOR STITCH SPECIFICATION "S","A","G" (1)

No.	Parts No.	Parts name	Remarks	Level	Cons	Qty
1	10150050	PRESSER FOOT ASM. 3/32				1
2	10150159	PRESSER FOOT ASM. 1/8				1
3	10150258	PRESSER FOOT ASM. 5/32				1
4	10150357	PRESSER FOOT ASM. 3/16				1
5	10150456	PRESSER FOOT ASM. 7/32				1
6	10150555	PRESSER FOOT ASM. 1/4				1
7	10150654	PRESSER FOOT ASM. 9/32				1
8	10150753	PRESSER FOOT ASM. 5/16				1
9	10150852	PRESSER FOOT ASM. 3/8				1
10	10150951	PRESSER FOOT ASM. 7/16				1
11	10151058	PRESSER FOOT ASM. 1/2				1
12	10151157	PRESSER FOOT ASM. 5/8				1
13	10151256	PRESSER FOOT ASM. 3/4				1
14	10151355	PRESSER FOOT ASM. 7/8				1
15	10151454	PRESSER FOOT ASM. 1				1
16	10151553	PRESSER FOOT ASM. 1-1/8				1
17	10151652	PRESSER FOOT ASM. 1-1/4				1
18	10151751	PRESSER FOOT ASM. 1-3/8				1
19	10151750	PRESSER FOOT ASM. 1-1/2				1
20	10152650	PRESSER FOOT ASM. 5/32				1
21	10152759	PRESSER FOOT ASM. 3/16				1
22	10152858	PRESSER FOOT ASM. 7/32				1
23	10152957	PRESSER FOOT ASM. 1/4				1
24	10153054	PRESSER FOOT ASM. 9/32				1
25	10153153	PRESSER FOOT ASM. 5/16				1
26	10153252	PRESSER FOOT ASM. 3/8				1
27	10153351	PRESSER FOOT ASM. 7/16				1
28	10153450	PRESSER FOOT ASM. 1/2				1
29	10153559	PRESSER FOOT ASM. 5/8				1
30	10153658	PRESSER FOOT ASM. 3/4				1
31	10153757	PRESSER FOOT ASM. 7/8				1
32	10153856	PRESSER FOOT ASM. 1				1
33	10153955	PRESSER FOOT ASM. 1-1/8				1
34	10154052	PRESSER FOOT ASM. 1-1/4				1
35	10154151	PRESSER FOOT ASM. 1-3/8				1
36	10154150	PRESSER FOOT ASM. 1-1/2				1
37	10156651	PRESSER FOOT ASM. 3/16				1
38	10156552	PRESSER FOOT ASM. 1/4				1
39	10156750	PRESSER FOOT ASM. 5/16				1
40	10156859	PRESSER FOOT ASM. 3/8				1
41	10156958	PRESSER FOOT ASM. 1/2				1
42	10157055	PRESSER FOOT ASM. 5/8				1
43	10157154	PRESSER FOOT ASM. 3/4				1
44	10157253	PRESSER FOOT ASM. 7/8				1
45	10157352	PRESSER FOOT ASM. 1				1
46	10157451	PRESSER FOOT ASM. 1-1/8				1
47	10157550	PRESSER FOOT ASM. 1-1/4				1

FOR STITCH SPECIFICATION "S","A","G" (1)

No.	Parts No.	Parts name	Remarks	Level	Cons	Qty
48	10157659	PRESSER FOOT ASM. 1-3/8				1
49	10157658	PRESSER FOOT ASM. 1-1/2				1
50	10155059	SWIVELGUIDE PRESSER FOOT, 1/4				1
51	10155158	PRESSER FOOT ASM. 5/16				1

FOR STITCH SPECIFICATION "S", "A", "G" (2)

Stitch spec. 縫仕様	S	★				★		★		☆			
	A	★		★		★				★			
Needle gauge size 針幅	Throat plate 針板				Feed Dog 送り歯								
	Code ゲージ号		Stitch length 縫ピッチ: 4mm		Stitch length 縫ピッチ: 6mm		Ø 1.6		Ø 1.9		Ø 2.2		
	inch	mm	Ref.No.	Part No.	Ref.No.	Part No.	Ref.No.	Part No.	Ref.No.	Part No.	Ref.No.	Part No.	
▲◆	A	3/32	2.4	1	101-35002			33	101-72500				
◆	B	1/8	3.2	2	101-35101			34	B1613-512-B08 (Ø 1.4)		*		
◆	C	5/32	4.0	3	101-35200			35	101-72708	52	102-69209	69	102-69308
	D	3/16	4.8	4	101-35309	20	101-37503	36	101-72807	53	B1613-512-D00	70	B1613-512-D0H
	E	7/32	5.6	5	101-35408		*	37	101-72906	54	B1613-512-E00	71	B1613-512-E0H
	F	1/4	6.4	6	101-35507	21	101-37602	38	101-73003	55	B1613-512-F00	72	B1613-512-F0H
	G	9/32	7.1	7	101-35606		*	39	101-73102	56	B1613-512-G00	73	B1613-512-G0H
	H	5/16	7.9	8	101-35705	22	101-37701	40	101-73201	57	B1613-512-H00	74	B1613-512-H0H
	K	3/8	9.5	9	101-35804	23	101-37800	41	101-73300	58	B1613-512-K00	75	B1613-512-K0H
	W	7/16	11.1	10	101-35903		*	42	101-73409	59	B1613-512-W00		*
	L	1/2	12.7	11	101-36000	24	101-37909	43	101-73508	60	B1613-512-L00	76	B1613-512-L0H
	M	5/8	15.9	12	101-36109	25	101-38006	44	101-73607	61	B1613-512-M00	77	B1613-512-M0H
	N	3/4	19.1	13	101-36208	26	101-38105	45	101-73706	62	B1613-512-N00	78	B1613-512-N0H
	P	7/8	22.2	14	101-36307	27	101-38204	46	101-73805	63	B1613-512-P00	79	B1613-512-P0H
	Q	1	25.4	15	101-36406	28	101-38303	47	101-73904	64	B1613-512-Q00	80	B1613-512-Q0H
	R	1-1/8	28.6	16	101-36505	29	101-38402	48	101-74001	65	B1613-512-R00	81	B1613-512-R0H
	S	1-1/4	31.8	17	101-36604	30	101-38501	49	101-74100	66	B1613-512-S00	82	B1613-512-S0H
	T	1-3/8	34.9	18	101-36703	31	101-38600	50	101-74209	67	B1613-512-T00	83	B1613-512-T0H
	U	1-1/2	38.1	19	101-36802	32	101-38709	51	101-74308	68	B1613-512-U00	84	B1613-512-U0H

- ★ ... Standard specification 標準仕様
- ☆ ... Special specification 特別仕様
- * ... Special order part 特別注文部品
- ◆ ... Except stitch specification "G" 縫仕様"G"は除く
- ▲ ... Except stitch specification "S" 縫仕様"S"は除く

See also p.11 for stitch specifications "A", "G"
縫仕様"A", "G"については11ページも併せてご参照ください。

FOR STITCH SPECIFICATION "S","A","G" (2)

No.	Parts No.	Parts name	Remarks	Level	Cons	Qty
1	10135002	THROAT PLATE 3/32				1
2	10135101	THROAT PLATE 1/8				1
3	10135200	THROAT PLATE 5/32				1
4	10135309	THROAT PLATE 3/16				1
5	10135408	THROAT PLATE 7/32				1
6	10135507	THROAT PLATE 1/4				1
7	10135606	THROAT PLATE 9/32				1
8	10135705	THROAT PLATE 5/16				1
9	10135804	THROAT PLATE 3/8				1
10	10135903	THROAT PLATE 7/16				1
11	10136000	THROAT PLATE 1/2				1
12	10136109	THROAT PLATE 5/8				1
13	10136208	THROAT PLATE 3/4				1
14	10136307	THROAT PLATE 7/8				1
15	10136406	THROAT PLATE 1				1
16	10136505	THROAT PLATE 1-1/8				1
17	10136604	THROAT PLATE 1-1/4				1
18	10136703	THROAT PLATE 1-3/8				1
19	10136802	THROAT PLATE 1-1/2				1
20	10137503	THROAT PLATE 3/16				1
21	10137602	THROAT PLATE 1/4				1
22	10137701	THROAT PLATE 5/16				1
23	10137800	THROAT PLATE 3/8				1
24	10137909	THROAT PLATE 1/2				1
25	10138006	THROAT PLATE 5/8				1
26	10138105	THROAT PLATE 3/4				1
27	10138204	THROAT PLATE 7/8				1
28	10138303	THROAT PLATE 1				1
29	10138402	THROAT PLATE 1-1/8				1
30	10138501	THROAT PLATE 1-1/4				1
31	10138600	THROAT PLATE 1-3/8				1
32	10138709	THROAT PLATE 1-1/2				1
33	10172500	FEED DOG 3/32				1
34	B1613512B0B	FEED DOG 1/8				1
35	10172708	FEED DOG 5/32				1
36	10172807	FEED DOG 3/16				1
37	10172906	FEED DOG 7/32				1
38	10173003	FEED DOG 1/4				1
39	10173102	FEED DOG 9/32				1
40	10173201	FEED DOG 5/16				1
41	10173300	FEED DOG 3/8				1
42	10173409	FEED DOG 7/16				1
43	10173508	FEED DOG 1/2				1
44	10173607	FEED DOG 5/8				1
45	10173706	FEED DOG 3/4				1
46	10173805	FEED DOG 7/8				1
47	10173904	FEED DOG 1				1

FOR STITCH SPECIFICATION "S", "A", "G" (2)

Stitch spec. 縫仕様	S	★				★		★		☆			
	A	★		★		★				★			
Needle gauge size 針幅	Throat plate 針板						Feed Dog 送り歯						
	Code ゲージ号		Stitch length 縫ピッチ: 4mm		Stitch length 縫ピッチ: 6mm		Ø 1.6		Ø 1.9		Ø 2.2		
	inch	mm	Ref.No.	Part No.	Ref.No.	Part No.	Ref.No.	Part No.	Ref.No.	Part No.	Ref.No.	Part No.	
▲◆	A	3/32	2.4	1	101-35002			33	101-72500				
◆	B	1/8	3.2	2	101-35101			34	B1613-512-B08 (Ø 1.4)		*		
◆	C	5/32	4.0	3	101-35200			35	101-72708	52	102-69209	69	102-69308
	D	3/16	4.8	4	101-35309	20	101-37503	36	101-72807	53	B1613-512-D00	70	B1613-512-D0H
	E	7/32	5.6	5	101-35408		*	37	101-72906	54	B1613-512-E00	71	B1613-512-E0H
	F	1/4	6.4	6	101-35507	21	101-37602	38	101-73003	55	B1613-512-F00	72	B1613-512-F0H
	G	9/32	7.1	7	101-35606		*	39	101-73102	56	B1613-512-G00	73	B1613-512-G0H
	H	5/16	7.9	8	101-35705	22	101-37701	40	101-73201	57	B1613-512-H00	74	B1613-512-H0H
	K	3/8	9.5	9	101-35804	23	101-37800	41	101-73300	58	B1613-512-K00	75	B1613-512-K0H
	W	7/16	11.1	10	101-35903		*	42	101-73409	59	B1613-512-W00		*
	L	1/2	12.7	11	101-36000	24	101-37909	43	101-73508	60	B1613-512-L00	76	B1613-512-L0H
	M	5/8	15.9	12	101-36109	25	101-38006	44	101-73607	61	B1613-512-M00	77	B1613-512-M0H
	N	3/4	19.1	13	101-36208	26	101-38105	45	101-73706	62	B1613-512-N00	78	B1613-512-N0H
	P	7/8	22.2	14	101-36307	27	101-38204	46	101-73805	63	B1613-512-P00	79	B1613-512-P0H
	Q	1	25.4	15	101-36406	28	101-38303	47	101-73904	64	B1613-512-Q00	80	B1613-512-Q0H
	R	1-1/8	28.6	16	101-36505	29	101-38402	48	101-74001	65	B1613-512-R00	81	B1613-512-R0H
	S	1-1/4	31.8	17	101-36604	30	101-38501	49	101-74100	66	B1613-512-S00	82	B1613-512-S0H
	T	1-3/8	34.9	18	101-36703	31	101-38600	50	101-74209	67	B1613-512-T00	83	B1613-512-T0H
	U	1-1/2	38.1	19	101-36802	32	101-38709	51	101-74308	68	B1613-512-U00	84	B1613-512-U0H

- ★ ... Standard specification 標準仕様
- ☆ ... Special specification 特別仕様
- * ... Special order part 特別注文部品
- ◆ ... Except stitch specification "G" 縫仕様 "G" は除く
- ▲ ... Except stitch specification "S" 縫仕様 "S" は除く

See also p.11 for stitch specifications "A", "G"
縫仕様 "A", "G" については11ページも併せてご参照ください。

FOR STITCH SPECIFICATION "S","A","G" (2)

No.	Parts No.	Parts name	Remarks	Level	Cons	Qty
48	10174001	FEED DOG 1-1/8				1
49	10174100	FEED DOG 1-1/4				1
50	10174209	FEED DOG 1-3/8				1
51	10174308	FEED DOG 1-1/2				1
52	10269209	FEED DOG 5/32				1
53	B1613512D00	FEED DOG 3/16				1
54	B1613512E00	FEED DOG 7/32				1
55	B1613512F00	FEED DOG 1/4				1
56	B1613512G00	FEED DOG 9/32				1
57	B1613512H00	FEED DOG 5/16				1
58	B1613512K00	FEED DOG 3/8				1
59	B1613512W00	FEED DOG 7/16				1
60	B1613512L00	FEED DOG 1/2				1
61	B1613512M00	FEED DOG 5/8				1
62	B1613512N00	FEED DOG 3/4				1
63	B1613512P00	FEED DOG 7/8				1
64	B1613512G00	FEED DOG 9/32				1
65	B1613512R00	FEED DOG 1-1/8				1
66	B1613512S00	FEED DOG 1-1/4				1
67	B1613512T00	FEED DOG 1-3/8				1
68	B1613512U00	FEED DOG 1-1/2				1
69	10269308	FEED DOG 5/32				1
70	B1613512D0H	FEED DOG 3/16				1
71	B1613512E0H	FEED DOG 7/32				1
72	B1613512F0H	FEED DOG 1/4				1
73	B1613512G0H	FEED DOG 9/32				1
74	B1613512H0H	FEED DOG 5/16				1
75	B1613512K0H	FEED DOG 3/8				1
76	B1613512L0H	FEED DOG 1/2				1
77	B1613512M0H	FEED DOG 5/8				1
78	B1613512N0H	FEED DOG 3/4				1
79	B1613512P0H	FEED DOG 7/8				1
80	B1613512Q0H	FEED DOG 1				1
81	B1613512R0H	FEED DOG 1-1/8				1
82	B1613512S0H	FEED DOG 1-1/4				1
83	B1613512T0H	FEED DOG 1-3/8				1
84	B1613512U0H	FEED DOG 1-1/2				1

TABLE OF EXCHANGING GAUGE PARTS COMMON TO ALL STITCH SPECIFICATIONS

- ◆ ... Except stitch specification "G".
 - ▲ ... Except stitch specification "S".
 - ◇ ... Except "A","B" type for tape attaching with stitch specification "F".(see p.12)
- Applicable needle gauge size to stitch specification
"F" are 1/8",3/16",1/4",9/32" and 5/16"

縫仕様"G"は除く
縫仕様"S"は除く
縫仕様"F"のテープ付け"A","B"タイプの場合は除く。(12ページをご参照ください)
縫仕様"F"の適用針幅は1/8",3/16",1/4",9/32",5/16"のみです。

Needle gauge size 針 幅			Needle Clamp asm. 針 留 (組)		Bed Side, Left 滑り板(左)		Bed Side, Right 滑り板(右)		Bushing asm.,Front 下軸前メタル(組)		Bushing asm.,Intermediate 下軸中メタル(組)		
Code ゲージ 記 号													
	inch	mm	Ref.No.	Part No.	Ref.No.	Part No.	Ref.No.	Part No.	Ref.No.	Part No.	Ref.No.	Part No.	
◆◆	A	3/32	2.4	1	101-47551	20	101-46009	24	101-46504	28	B1802-512-0A0-A	30	B1803-515-0A0
◆	B	1/8	3.2	2	101-47650								
◆	C	5/32	4.0	3	101-47759								
	D	3/16	4.8	4	101-47858								
	E	7/32	5.6	5	101-47957								
	F	1/4	6.4	6	101-48054								
	G	9/32	7.1	7	101-48153								
	H	5/16	7.9	8	101-48252								
	K	3/8	9.5	9	101-48351								
	W	7/16	11.1	10	101-48450								
	L	1/2	12.7	11	101-48559	21	101-46108	25	101-46603	29	B1802-512-0AB	31	101-12357
	M	5/8	15.9	12	101-48658								
	N	3/4	19.1	13	101-48757								
	P	7/8	22.2	14	101-48856	22	101-46207	26	101-46702	29	B1802-512-0AB	31	101-12357
	Q	1	25.4	15	101-48955								
	R	1 1/8	28.6	16	101-49052	23	101-46306	27	101-46801	29	B1802-512-0AB	31	101-12357
	S	1 1/4	31.8	17	101-49151								
	T	1 3/8	34.9	18	101-49250								
	U	1 1/2	38.1	19	101-49359								

TABLE OF EXCHANGING GAUGE PARTS COMMON TO ALL STITCH SPECIFICATIONS

No.	Parts No.	Parts name	Remarks	Level	Cons	Qty
1	10147551	NEEDLE CLAMP ASM. 3/32				1
2	10147650	NEEDLE CLAMP ASM. 1/8				1
3	10147759	NEEDLE CLAMP ASM. 5/32				1
4	10147858	NEEDLE CLAMP ASM. 3/16				1
5	10147957	NEEDLE CLAMP ASM. 7/32				1
6	10148054	NEEDLE CLAMP ASM. 1/4				1
7	10148153	NEEDLE CLAMP ASM. 9/32				1
8	10148252	NEEDLE CLAMP ASM. 5/16				1
9	10148351	NEEDLE CLAMP ASM. 3/8				1
10	10148450	NEEDLE CLAMP ASM. 7/16				1
11	10148559	NEEDLE CLAMP ASM. 1/2				1
12	10148658	NEEDLE CLAMP ASM. 5/8				1
13	10148757	NEEDLE CLAMP ASM. 3/4				1
14	10148856	NEEDLE CLAMP ASM. 7/8				1
15	10148955	NEEDLE CLAMP ASM. 1				1
16	10149052	NEEDLE CLAMP ASM. 1-1/8				1
17	10149151	NEEDLE CLAMP ASM. 1-1/4				1
18	10149250	NEEDLE CLAMP ASM. 1-3/8				1
19	10149359	NEEDLE CLAMP ASM. 1-1/2				1
20	10146009	BED SLIDE, LEFT 3/32" TO 7/16				1
21	10146108	BED SLIDE, LEFT 1/2" TO 3/4				1
22	10146207	BED SLIDE, LEFT 7/8" TO 1-1/8				1
23	10146306	BED SLIDE, LEFT 1-1/4" TO 1-1/2				1
24	10146504	BED SLIDE, RIGHT 3/32" TO 7/16				1
25	10146603	BED SLIDE, RIGHT 1/2" TO 3/4				1
26	10146702	BED SLIDE, RIGHT 7/8" TO 1-1/8				1
27	10146801	BED SLIDE, RIGHT 1-1/4" TO 1-1/2				1
28	B18025120A0A	BUSHING ASM., FRONT				1
29	B18025120AB	BUSHING ASM., FRONT				1
30	B18035150A0	BUSHING ASM., INTERMEDIATE				1
31	10112357	BUSHING ASM. INTERMEDIATE				1

FOR STITCH SPECIFICATION "F"

★...Standard specification 標準仕様
*...Special order part 特別注文部品

Standard type 標準タイプ	★ common to stitch spec."S" 縫仕様"S"と共通						★				★			
Tape attaching,A type テープ付けAタイプ			★				★				★			
Tape attaching,B type テープ付けBタイプ							★		★		★			
Needle gauge size 針幅	Throat Plate 針板						Feed Dog 送り歯				Presser Foot asm. 押さえ			
Code ゲージ 記号														
	inch	mm	Ref.No.	Part No.	Ref.No.	Part No.	Ref.No.	Part No.	Ref.No.	Part No.	Ref.No.	Part No.	Ref.No.	Part No.
B	1/8	3.2	1	101-35101	6	101-85304	12	101-85601	15	B1613-512-B0B	20	101-86302	23	101-85957
D	3/16	4.8	2	101-35309	7	101-85403	13	101-85700	16	B1613-512-D0B	21	101-86401	24	101-86054
F	1/4	6.4	3	101-35507		*		*	17	B1613-512-F0B		*		*
G	9/32	7.1	4	101-35606	11	101-85502	14	101-85809	18	B1613-512-G0B	22	101-86500	25	101-86153
H	5/16	7.9	5	101-35705		*		*	19	B1613-512-H0B		*		*

Note(注記)

All types of Needle Clamp asm.,Bushing asm.,Front,Bushing asm.,Intermediate, and Standard types of Bed Slide Left, Bed Slide Right,are common to stitch specification "S". (See p.25)

全タイプの針留、下軸前メタル(組)、下軸中メタル(組)及び標準タイプの滑り板(組)、滑り板(左)、(右)は縫仕様"S"と共通です。(25ページをご参照ください。See p.12 for the common parts to stitch specification "F".
縫仕様"F"共通部品については12ページをご参照下さい。

FOR STITCH SPECIFICATION“F

No.	Parts No.	Parts name	Remarks	Level	Cons	Qty
1	10135101	THROAT PLATE 1/8				1
2	10135309	THROAT PLATE 3/16				1
3	10135507	THROAT PLATE 1/4				1
4	10135606	THROAT PLATE 9/32				1
5	10135705	THROAT PLATE 5/16				1
6	10185304	THROAT PLATE 1/8				1
7	10185403	THROAT PLATE 3/16				1
8	10185502	THROAT PLATE 9/32				1
9	10185601	THROAT PLATE 1/8				1
10	10185700	THROAT PLATE 3/16				1
11	10185809	THROAT PLATE 9/32				1
12	B1613512B0B	FEED DOG 1/8				1
13	B1613512D0B	FEED DOG 3/16				1
14	B1613512F0B	FEED DOG 1/4				1
15	B1613512G0B	FEED DOG 9/32				1
16	B1613512H0B	FEED DOG 5/16				1
17	10186302	FEED DOG 1/8				1
18	10186401	FEED DOG 3/16				1
19	10186500	FEED DOG 9/32				1
20	10185957	PRESSER FOOT ASM. 1/8				1
21	10186054	PRESSER FOOT ASM. 3/16				1
22	10186153	PRESSER FOOT ASM. 9/32				1
23	10185957	PRESSER FOOT ASM. 1/8				1
24	10186054	PRESSER FOOT ASM. 3/16				1
25	10186153	PRESSER FOOT ASM. 9/32				1

HOW TO MAKE USE OF THIS PARTS LIST

1.Explanation of codes

1)"*"mark.....means this part is changed from the previous parts book.

As to the details of the change, refer to the "List for information of change".

2)"#01".....refer to "Note" explanation at bottom of page.

2.Codes on the "Qty" column

• Each numeral indicates the number of parts required.

• "0.1" and "2.5" indicate the length (in meters) of the respective parts.

3.Parentheses mean that the corresponding part is a subpart that constructs an assembly part.

4.Dotted lines on the Figures indicate assembly parts.

1."注記"欄の記号説明

1) "*"印.....前回のパーツブックに比較して今回変更された部品を意味します。

変更内容は、"変更情報リスト"を参照してください。

2) "#01".....ページ下の"注記"の説明を参照してください。

2.数量欄の数字は、個数を表し、0.1、2.5等の数値は、長さ（単位メートル）を表します。

3.数量欄の（ ）は、組部品を構成している子部品であることを意味します。

4.イラストページの-----枠は、組構成であることを意味します。

NUMERICAL INDEX OF PARTS

PART NO	PAGE	REF NO.	PART NO	PAGE	REF NO.	PART NO	PAGE	REF NO.
10039105	30	10	10109007	10	41	10128007	30	6
10039105	32	7	10109106	12	50	10128007	32	4
10100659	4	44	10109205	10	40	10128056	30	1
10100758	2	16	10109809	10	38	10128064	32	1
10100808	2	15	10109908	10	28	10128106	30	3
10100907	2	2	10110104	10	18	10128106	32	2-23
10101004	2	4	10110153	10	17	10135002	40	1
10101103	2	24	10110203	10	20	10135101	40	2
10101202	2	33	10110252	10	19	10135101	46	1
10101301	2	29	10110401	10	21	10135200	40	3
10101400	2	22	10110500	10	22	10135309	2	41
10101509	2	20	10110609	10	23	10135309	40	4
10102507	6	20	10111805	10	27	10135309	46	2
10102655	6	10	10112050	10	6	10135408	40	5
10102705	6	6	10112357	44	31	10135507	40	6
10102853	6	1	10112407	10	29	10135507	46	3
10103000	6	21	10121069	6	44	10135606	40	7
10103109	6	25	10121309	6	46	10135606	46	4
10103257	6	27	10121408	8	51	10135705	40	8
10103406	6	32	10121556	8	48	10135705	46	5
10104602	6	37	10121606	8	58	10135804	40	9
10104701	6	7	10121705	6	33	10135903	40	10
10104859	6	38	10121952	8	64	10136000	40	11
10105575	18	37	10122109	8	59	10136109	40	12
10105609	18	3	10122257	8	69	10136208	40	13
10106003	14	43	10123305	18	17	10136307	40	14
10106102	8	62	10123453	28	1	10136406	40	15
10106102	16	48	10124055	28	5	10136505	40	16
10106201	16	60	10124501	28	4	10136604	40	17
10106300	14	27	10124758	20	1	10136703	40	18
10106458	16	62	10124758	22	1	10136802	40	19
10106557	16	56	10124766	28	2	10137503	40	20
10106656	16	64	10124774	20	5	10137602	40	21
10106805	16	54	10125003	18	6	10137701	40	22
10106904	14	3	10125102	18	19	10137800	40	23
10107001	14	2	10125201	18	20	10137909	40	24
10107159	14	5	10125557	24	5	10138006	40	25
10107209	14	25	10125755	24	2	10138105	40	26
10107357	20	7	10125904	24	19	10138204	40	27
10107506	14	8	10126001	24	18	10138303	40	28
10107753	14	37	10126555	24	43	10138402	40	29
10108009	14	11	10126654	24	41	10138501	40	30
10108512	10	1	10126803	24	40	10138600	40	31
10108611	10	11	10126902	24	14	10138709	40	32
10108751	10	13	10127009	24	13	10146009	2	39

NUMERICAL INDEX OF PARTS

PART NO	PAGE	REF NO.	PART NO	PAGE	REF NO.	PART NO	PAGE	REF NO.
10146009	44	20	10151652	36	17	10172500	40	33
10146108	44	21	10151750	36	19	10172708	40	35
10146207	44	22	10151751	36	18	10172807	40	36
10146306	44	23	10152650	36	20	10172906	40	37
10146504	2	42	10152759	18	32	10173003	40	38
10146504	44	24	10152759	36	21	10173102	40	39
10146603	44	25	10152858	36	22	10173201	40	40
10146702	44	26	10152957	36	23	10173300	40	41
10146801	44	27	10153054	36	24	10173409	40	42
10147551	44	1	10153153	36	25	10173508	40	43
10147650	44	2	10153252	36	26	10173607	40	44
10147759	44	3	10153351	36	27	10173706	40	45
10147858	6	40	10153450	36	28	10173805	40	46
10147858	44	4	10153559	36	29	10173904	40	47
10147957	44	5	10153658	36	30	10174001	42	48
10148054	44	6	10153757	36	31	10174100	42	49
10148153	44	7	10153856	36	32	10174209	42	50
10148252	44	8	10153955	36	33	10174308	42	51
10148351	44	9	10154052	36	34	10178754	18	28
10148450	44	10	10154150	36	36	10179208	8	61
10148559	44	11	10154151	36	35	10179307	12	49
10148658	44	12	10155059	38	50	10185056	22	8
10148757	44	13	10155158	38	51	10185106	22	7
10148856	44	14	10156552	36	38	10185205	22	6
10148955	44	15	10156651	36	37	10185304	46	6
10149052	44	16	10156750	36	39	10185403	46	7
10149151	44	17	10156859	36	40	10185502	46	8
10149250	44	18	10156958	36	41	10185601	46	9
10149359	44	19	10157055	36	42	10185700	46	10
10150050	36	1	10157154	36	43	10185809	46	11
10150159	36	2	10157253	36	44	10185957	46	23
10150258	36	3	10157352	36	45	10186054	46	24
10150357	36	4	10157451	36	46	10186153	46	25
10150456	36	5	10157550	36	47	10186302	46	17
10150555	36	6	10157658	38	49	10186401	46	18
10150654	36	7	10157659	38	48	10186500	46	19
10150753	36	8	10160851	2	17	10188001	20	9
10150852	36	9	10161057	6	28	10188902	6	19
10150951	36	10	10161156	20	8	10197655	12	51
10151058	36	11	10161552	30	2·23	10269209	42	52
10151157	36	12	10162204	26	2	10269308	42	69
10151256	36	13	10162253	26	1	10419307	30	4
10151355	36	14	10162402	26	25	10419307	32	2·23
10151454	36	15	10162501	26	24	10602902	2	3
10151553	36	16	10162600	26	3	10623403	24	25

NUMERICAL INDEX OF PARTS

PART NO	PAGE	REF NO.	PART NO	PAGE	REF NO.	PART NO	PAGE	REF NO.
10741759	2	5	22934301	26	21	B1613512G0H	42	73
10958759	30	7	22934400	26	19	B1613512H00	42	57
11007101	18	7	22934509	26	17	B1613512H0B	46	16
11024015	26	7	22934608	26	18	B1613512H0H	42	74
11024106	26	8	26910158	34	1	B1613512K00	42	58
11024205	26	11	B1111563000	2	37	B1613512K0H	42	75
11024304	26	23	B1114051000	2	10	B1613512L00	42	60
11047107	26	4	B1123552000A	2	26	B1613512L0H	42	76
11071602	18	38	B1123552A00	2	27	B1613512M00	42	61
11071701	18	24	B1132512000	2	34	B1613512M0H	42	77
11071800	18	34	B1147555000	14	19	B1613512N00	42	62
11072204	28	14	B1212552A00	6	13	B1613512N0H	42	78
11077567	30	13	B12135520A0A	6	16	B1613512P00	42	63
11078003	30	22	B1214019000	6	24	B1613512P0H	42	79
11078102	30	20	B1214038000	24	9	B1613512Q0H	42	80
11078102	32	17	B1412352A00	8	56	B1613512R00	42	65
11078250	30	14	B1414555000	6	9	B1613512R0H	42	81
22602601	4	43	B1501581000	18	27	B1613512S00	42	66
22617609	28	20	B1505227T00A	22	3	B1613512S0H	42	82
22618904	28	22	B1509555000	18	22	B1613512T00	42	67
22619001	24	27	B1511555000	18	23	B1613512T0H	42	83
22621056	32	11	B1513280000	14	7	B1613512U00	42	68
22621106	32	19	B1515415000	18	9	B1613512U0H	42	84
22621155	32	10	B1517415000	18	1	B1613512W00	42	59
22904155	6	22	B1521555000	18	33	B16234700A0	14	20
22904155	16	50	B1522180000	18	11	B16234700AA	14	21
22907109	18	30	B1523226000	18	5	B1624380000	14	14
22907406	18	26	B1531415000	18	10	B162438000A	14	15
22907703	18	25	B1603512000	16	46	B1633470000	16	66
22912109	14	18	B1604012000A	14	41	B1634470000	14	17
22925101	24	1	B1610484000	14	28	B1636581B00	14	32
22930309	34	7	B1610512000	14	34	B1637432000	14	31
22930408	34	5	B1613512B0B	40	34	B1649161000	14	23
22930507	34	2	B1613512B0B	46	12	B1652470000	16	55
22930556	34	20	B1613512D00	14	36	B18025120A0A	10	2
22930705	34	3	B1613512D00	42	53	B18025120A0A	44	28
22930804	34	11	B1613512D0B	46	13	B18025120AB	44	29
22930903	34	10	B1613512D0H	42	70	B18035150A0	10	10
22931000	34	9	B1613512E00	42	54	B18035150A0	44	30
22931109	34	8	B1613512E0H	42	71	B18165120A0	10	4
22931307	34	6	B1613512F00	42	55	B1818051B00	12	48
22931406	34	4	B1613512F0B	46	14	B1820563000	10	31
22932453	26	10	B1613512F0H	42	72	B1821051000	10	33
22934202	26	20	B1613512G00	42	64	B1822051000	10	34
22934251	26	16	B1613512G0B	46	15	B1823051000	10	37

NUMERICAL INDEX OF PARTS

PART NO	PAGE	REF NO.	PART NO	PAGE	REF NO.	PART NO	PAGE	REF NO.
B1834512000A	24	35	B8228125000	26	15	RO195240100	24	16
B18405120A0	10	8	B9117051000	10	24	RO437200200	6	30
B1850512000	24	30	BP300000000	24	39	SB120000100	6	29
B1851512000	24	29	CM300200001	4	49·50	SB120000200	10	14
B1860512000	12	43	CM3002000B1	4	49·50	SB30953010C	10	39
B1903552000	6	8	CM300200101	4	47·48	SD0470281SP	28	7
B19045520A0	6	2	CM3002001A1	4	47·48	SD0490261SP	30	2·23
B1905541B00	6	5	CQ200000000	8	60	SD0490261SP	32	20
B2906415000	8	57	CQ202000000	10	36	SD0600322SD	18	21
B29074150A0	6	35	CQ252000000	16	52	SD0630275SP	18	12
B2913412N00	8	50	CQ303000000	16	61	SD0630301SP	18	8
B2915415000	8	52	CQ3500000F0	6	3	SD0640231SP	18	16
B3120125000	28	13	CS102121ASH	14	9	SD0720331SP	18	18
B3125012000	28	27	CS1470710SH	12	52	SD0900701TP	8	68
B3125012000	30	18	D3129555D00	20	2	SD0900701TP	14	58
B3125012000	32	15	D3129555D00	22	2	SD0900701TP	16	58
B3125527000	28	26	MC200500650	20	4	SD0900702TP	14	4
B3126012000	30	16	MC200500650	22	5	SK3482500SC	30	11
B3126012000	32	13	MC200500900	6	43	SK3482500SC	32	8
B3126051000	28	10	MC200501300	20	11	SM0081001SD	26	5
B3127051000	28	9	MDP500B1400	6	42	SM4051405SE	34	13
B3127527000	28	8	MDP500B2100	20	10	SM6061610SC	34	12
B3128051000	28	3	MSG19060900	20	3	SM7082550SP	12	46
B3128527000	28	19	MSG19650900	22	4	SM8050502TP	14	42
B3129012A00	28	12	NM6050001SE	34	18	SM8063012TR	26	13
B3129012B00	30	17	NM6060001SE	26	12	SM9061203SE	26	22
B3129012B00	32	14	NM6160511SE	34	17	SM9061853SR	26	14
B3129526000	20	6	NS6080210SP	14	44	SQ1110401MZ	24	21
B3132051000	28	11	NS6090310SP	24	32	SQ1150451MZ	24	11
B3134521000	28	6	NS6110310SP	24	44	SS2080810SP	2	25
B3135415000	18	15	NS6110420SP	10	35	SS2090710SP	2	23
B31375270A0	28	16	NS6110420SP	14	24	SS2110920TP	2	40
B3138512000	2	31	NS6110420SP	24	34	SS2110930SP	14	30
B3138527000	28	23	NS6620310SP	2	11	SS2110930SP	24	28
B3139527000	28	18	NS6680320SP	8	71	SS3130710SP	4	45
B3141527000	28	25	NS6680410SP	8	67	SS4110515SP	30	19
B3142527000	28	17	NS6680410SP	16	63	SS4110515SP	32	16
B3143527000	28	15	RE0500711KP	14	40	SS5090610SP	2	30
B3211555000	30	21	RE0600000K0	18	4	SS6060410TP	8	54
B3211555000	32	18	RE1000000K0	26	9	SS6081810SP	16	45
B3431581000	18	2	RO029180100	6	17	SS6090660TP	8	55
B3524552000	24	6	RO037180100	18	35	SS6090810SP	10	25
B3530555000	24	15	RO044240100	6	14	SS6110610TP	10	16
B3534155000	24	8	RO074240100	14	16	SS6110710TP	14	1
B3538112000	24	23	RO098240100	26	6	SS6111610SP	24	26

NUMERICAL INDEX OF PARTS

PART NO	PAGE	REF NO.	PART NO	PAGE	REF NO.
SS6121050SP	14	22	SS8151150SP	8	63
SS6121220TP	6	36	SS8151150SP	10	12
SS6121610TP	8	70	SS8151550SP	6	31
SS6121610TP	14	57	SS8151550SP	12	47
SS6121610TP	16	57	SS8152030SP	10	3
SS6153040SP	10	30	SS8660530TP	10	7
SS6580752TP	14	35	SS8660610TP	6	23
SS6661110SP	6	26	SS8660610TP	10	15
SS6661110SP	14	29	SS8660610TP	14	51
SS7060610SP	12	44	SS8660610TP	16	51
SS7080520SP	18	13	SS8660610TP	18	29
SS7081310SP	30	24	SS8660810TP	10	5
SS7081310SP	32	21	SS8660810TP	14	12
SS7090520SP	2	32	SS8661040TP	14	13
SS7090520SP	28	24	SS8681130SP	16	49
SS7090910SP	6	47	SS8681950SP	6	12
SS7090910SP	24	31	SS9111820SP	10	42
SS7090910TP	18	31	SS9151440CP	14	39
SS7110340SP	24	42	SS9661120CP	6	11
SS7110510SP	2	38	TA0550604R0	2	8
SS7110510SP	16	65	TA0750404R0	2	36
SS7110510SP	30	5	TA0750704R0	2	12
SS7110510SP	32	3	TA1050604R0	2	35
SS7110710SP	2	6	TA1250406R0	2	19
SS7110710SP	24	24	TA1250504R0	2	9
SS7110710SP	28	28	TA2050406R0	4	46
SS7110840SP	30	15	TA2100904R0	2	14
SS7110840SP	32	12	TA2351004R0	2	7
SS7110910SP	2	1	WP0250516SD	8	53
SS7110910SP	14	53	WP0330500MB	18	14
SS7110910SP	16	53	WP0371016SD	10	26
SS7111120SP	2	18	WP0480856SP	30	25
SS7111310TP	16	47	WP0480856SP	32	22
SS7111410SP	24	45	WP0501016SC	30	12
SS7111810SP	24	17	WP0501016SC	32	9
SS7150740SP	30	9	WP0621016SD	14	38
SS7150740SP	32	6	WP0621016SD	30	8
SS7681650TP	6	15	WP0621016SD	32	5
SS8080660TP	6	41	WP0740516SP	8	66
SS8110320SP	22	9	WP0740516SP	18	36
SS8110410TP	12	53	WP0850002SP	12	45
SS8110510SP	6	45	WP1612616SE	34	15
SS8150510TP	6	34	WS0510002KN	34	19
SS8150510TP	10	9	WS1643202KR	34	16
SS8151150SP	6	63			