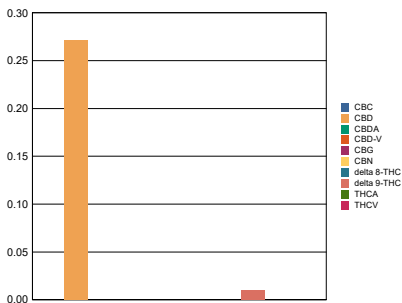


Sample Information				RS (GCMS-MS)	ppm	RL	Terpenes (HPLC)	mg/g	%
Sample Identification	Haoma 100mg Night Cream			<b>Compound</b>			<b>Compound</b>		
Laboratory Number	1910280-02			Acetone	NT	NT	alpha-Bisabolol	NT	NT
Batch Number	B19128/33 U9270A			Acetonitrile	NT	NT	(-)-Borneol and (+)-Borneol	NT	NT
Matrix	Topical			Benzene	NT	NT	Camphene	NT	NT
<b>Cannabinoid (HPLC)</b>				n-Butane	NT	NT	Camphor	NT	NT
	mg/g	mg/unit	%	Carbon Tetrachloride	NT	NT	beta-Caryophyllene	NT	NT
<b>Compound</b>				Chloroform	NT	NT	trans-Caryophyllene	NT	NT
THCA	ND	ND	ND	1,2-Dichloroethane	NT	NT	Caryophyllene Oxide	NT	NT
delta 9-THC	0.102	4.81	0.01	Ethanol	NT	NT	alpha-Cedrene	NT	NT
delta 8-THC	ND	ND	ND	Ethyl acetate	NT	NT	Cedrol	NT	NT
CBGA	NT	NT	NT	Ethylene oxide	NT	NT	Endo-fenchyl Alcohol	NT	NT
THCV	ND	ND	ND	n-Heptane	NT	NT	Eucalyptol	NT	NT
CBDA	ND	ND	ND	n-Hexane	NT	NT	Fenchone	NT	NT
CBD	2.71	127	0.27	iso-Butane	NT	NT	Geraniol	NT	NT
CBD-V	ND	ND	ND	iso-Pentane	NT	NT	Geranyl acetate	NT	NT
CBN	ND	ND	ND	Methylene Chloride	NT	NT	Guaiol	NT	NT
CBG	ND	ND	ND	Propane	NT	NT	Hexahydrothymol	NT	NT
CBC	ND	ND	ND	2-Propanol (IPA)	NT	NT	alpha-Humulene	NT	NT
<b>Cannabinoids Total</b>				Tetrahydrofuran	NT	NT	Isoborneol	NT	NT
Max Active THC	0.10	4.81	0.01	Toluene	NT	NT	Isopulegol	NT	NT
Max Active CBD	2.71	127.00	0.27	Trichloroethene	NT	NT	Limonene	NT	NT
T.Active Cannabinoids	2.81	132.00	0.28	o-xylene	NT	NT	Linalool	NT	NT
Total Cannabinoids	2.81	132.00	0.28	Xylenes (m,p)	NT	NT	p-Mentha-1,5-diene	NT	NT
<b>Max Active Ratios</b>							beta-Myrcene	NT	NT
26.47 : 1 CBD to THC							trans-Nerolidol	NT	NT
0.04 : 1 THC to CBD							Ocimene Isomer 1	NT	NT

Cannabinoid (%)



Sample Image



Metals	ppm	RL
<b>Compound</b>		
Arsenic	NT	NT
Cadmium	NT	NT
Mercury	NT	NT
Lead	NT	NT
<b>Percent Moisture</b>		
NT %		
<b>Water Activity</b>		
NT		

RL = Reporting Limit  
NA = Not Applicable  
NT = Not Tested  
ND = Non Detected