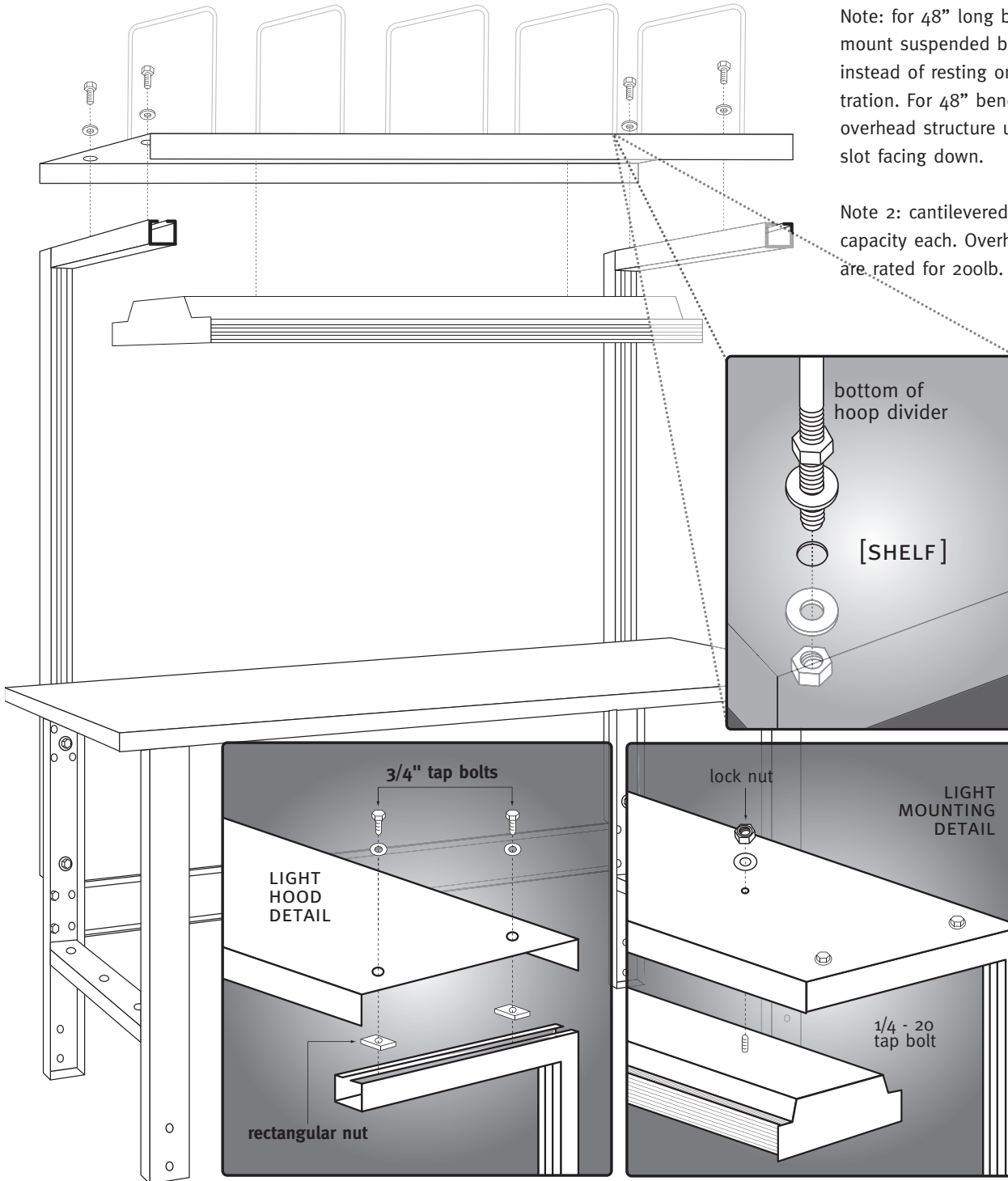




# OVERHEAD STRUCTURE ASSEMBLY

## MOUNTING LIGHT HOOD TO 90° OVERHEAD



Note: for 48" long benches, light hood will mount suspended below overhead structure instead of resting on top as shown in the illustration. For 48" benches the top cross strut of overhead structure upright is supplied with the slot facing down.

Note 2: cantilevered shelves are rated for 75lb. capacity each. Overhead structures with shelves are rated for 200lb. total.

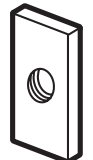
### HOOD HARDWARE REQUIRED:



4 tap bolts 3/4" long



4 washers



4 rectangular nuts

### LIGHT HARDWARE:



2 1/4-20 bolts



2 1/4-20 nuts



2 1/4-20 nuts



2 lock nuts

## MOUNTING LIGHT HOOD TO OVERHEAD STRUCTURE.

Hardware required: 4 tap bolts 3/4" long, 4 rectangular nuts, 4 washers. This assembly should only be done after overhead structure uprights have been attached to bench. Insert tap bolts with washers through holes in light hood as shown below. Loosely thread nuts onto tap bolts, stopping with nuts positioned lengthwise front to back. Tip the bolts sideways until nuts slip through slot of overhead structure. Be sure nuts are turned clockwise as far as possible, then tighten bolts securely.