

**WARNING! FLAMMABLE! EYE IRRITANT! SKIN IRRITANT!**

**YOUR SAFETY IS VERY IMPORTANT TO US - PLEASE READ**

**PLEASE USE PROPERLY AND FOLLOW INSTRUCTIONS - FAILURE TO DO SO MAY RESULT  
IN PROPERTY DAMAGE, INJURY, OR DEATH**

**CHOOSING WHERE TO USE:** Do not place the fire bowl under flammable objects such as umbrellas, awnings, or drapery or near combustible items such as wood structures, fuel, clothing, or dried vegetation. Do not handle fire bowl while the can is burning.

**PROPER FUEL CANISTER USE:** Do not use any other type of fuel other than TerraFlame Gel Fuel single use fuel cans. Dispose or recycle canister after use – do not refill canister. Do not attempt to handle canister for at least 10 minutes after flame is extinguished.

**PROPER PRODUCT USE:**

- Do not smoke near fuel
- Store away from open flames such as pilot lights of any object that sparks
- Keep out of reach of children
- Do not touch or move device while flames are present
- Allow five minutes for device to cool before handling
- TerraFlame gel fuel canisters will burn for up to 3 hours. Each canister can be lit, extinguished, and then relit, depending on the desired length of time for use. Do not refill the canister. Proper performance with other gel fuels cannot be assured
- **KEEP OUT OF REACH OF CHILDREN**
- Only use an extended lighter or long fireplace match to ignite gel fuel.
- Do not obstruct or inhibit flame by placing anything on or above the device.
- Do not mix TerraFlame Gel Fuel with any other substance

**FIRST AID TREATMENT:**

Fuel contains isopropanol. If swallowed, call poison control center at 800-222-1222, 911, hospital, or doctor immediately. If swallowed, dilute by drinking lots of water.

**DO NOT INDUCE VOMITING.**

- If fuel spills on skin, immediately wash with soap and water
- If fuel gets in eyes, rinse with cool water
- If inhaled, move into fresh air immediately
- If fuel spills on clothes, remove as soon as possible and wash
- If symptoms from exposure persist, consult a doctor immediately

If fire is extinguished before fuel is done, let stand for at least 10 minutes before attempting to re-ignite. Once can is cool, follow TerraFlame ignition procedures.

**Active ingredients:** Isopropanol, Ethanol, Cyclohexylamine.

This product has not been registered by the US EPA.

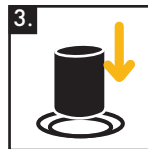
**INSTRUCTIONS FOR USE**



Gently shake



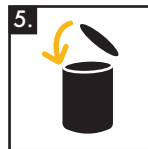
Open



Place in receptacle



Light & enjoy



Extinguish