

ROBERT
GORDON

INTERIORS



robertgordoninteriors.com

Interiors Collection 2023

MADE IN AUSTRALIA



A potter's craft.

Making since 1945.

Here at Robert Gordon we design and make pieces for home and living that adhere to the same philosophy and integrity as the high fired stoneware collections we have been producing for over 75 years.



Oyster Sconce in Stone finish

Elegant and simple. A new wall sconce set to light up your space.



Prototypes for the classic scallop details were first carved by hand in our Melbourne studio, by our master mould maker.

Carved & Curious.

Each piece is touched by the hands of at least nine craftspeople before carefully making its way to your space.

Oyster Sconce in Coast glaze



NEW ARRIVALS

Bowl Sconce in Olive glaze



MADE IN MELBOURNE



Bowl Sconce in Chai glaze

Sweet and compact, a sconce that is ideal for small spaces.

Our commitment to sustainability.



Our Australian Made collections are crafted using fully vitrified, high fired stoneware.



Each slip cast basin, light and wall hook is made from recycled scrap clay, and fired in an electric kiln, off-set with solar.

MADE IN MELBOURNE



Pearl Sconce in Saltbush glaze



AUSTRALIAN MADE LIGHTING

A simple dish frames a ball light to create a sweet wall sconce. Each dish is crafted by hand in our Melbourne workshop and available in 8 unique glazes.

MADE IN MELBOURNE



Dish Sconce in Rivergum glaze

DESIGNED IN MELBOURNE

AUSTRALIAN MADE LIGHTING



MADE IN MELBOURNE

Bell Pendant in Saltbush glaze



DESIGNED IN AUSTRALIA

MADE IN MELBOURNE



Australian Made Basins

Crafted with care and built to withstand the test of time, our basins are designed and made on-site at our workshop in Melbourne, Victoria.



Clay 340 Basin in Stone finish
Bowl Sconce in Poppyseed glaze



Clay 350 Basin in Stone finish

AUSTRALIAN MADE BASINS

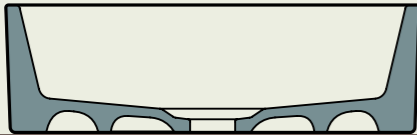
Kiln 515 in Poppyseed glaze



Kiln 360 in Rivergum glaze

OUR SHAPES

Above Counter Basins >



Clay 400 Basin

Straight sided walls with a simple, contemporary profile. Clay 400 is perfect for a modern vanity.



Scan the QR code for more info

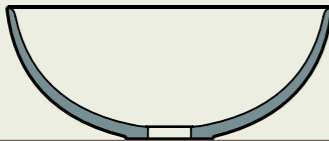


Clay 350 Basin

A modern, straight sided profile designed to suit any bathroom.



Scan the QR code for more info

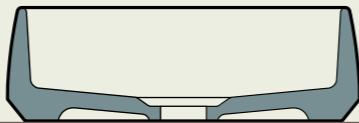


Clay 340 Basin

A classic dish shape, with high sides to show off our reactive glazes to perfection.



Scan the QR code for more info

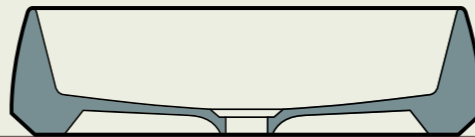


Kiln 360 Basin

Compact and round, the Kiln 360 is a perfect size for the smaller bathroom or double vanity.



Scan the QR code for more info



Kiln 515 Basin

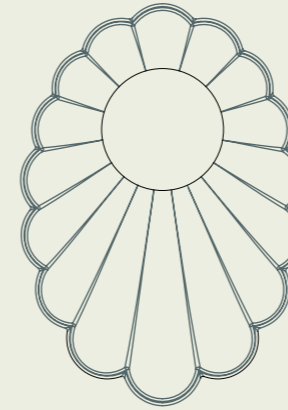
A simple, rectangular form with a modern profile. The largest of our basins, a statement piece.



Scan the QR code for more info

OUR SHAPES

Pendants & Wall Sconce Lights >



Oyster Wall Sconce

Carved and curious. Elegant and simple. Our Oyster light is set to light up your space.



Scan the QR code for more info

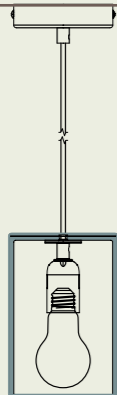


Pearl Wall Sconce

A quirky combination of modern, crafted clay and whimsical frills.



Scan the QR code for more info

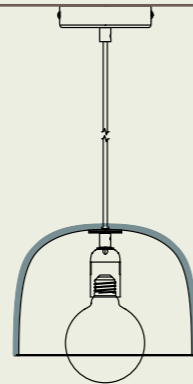


Cast Cylinder Pendant

The Cylinder Pendant comes in two sizes and is made from 100% recycled clay.



Scan the QR code for more info

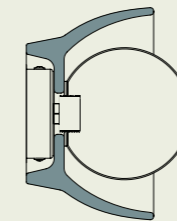


Cast Bell Pendant

The Bell Pendant comes in two sizes and is made from 100% recycled clay.



Scan the QR code for more info

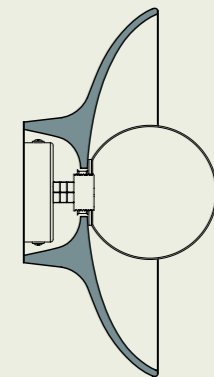


Bowl Wall Sconce

Sweet and compact, our bowl sconce is ideal for intimate spaces.



Scan the QR code for more info



Dish Wall Sconce

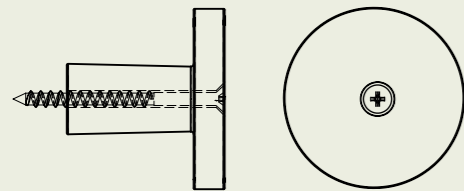
A simple dish frames a ball light to create a sweet wall sconce.



Scan the QR code for more info

OUR SHAPES

Interiors Accessories >

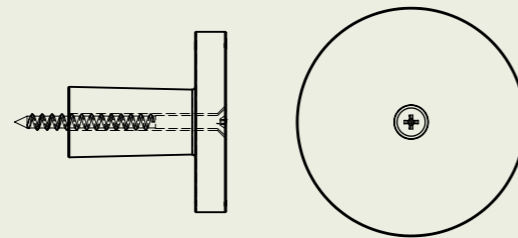


Small Wall Hook

Our ceramic wall hooks are available in 2 different sizes made from recycled clay.



Scan the QR code for more info



Large Wall Hook

Our ceramic wall hooks are available in 2 different sizes made from recycled clay.



Scan the QR code for more info

STUDIO FINISHES

Developed in Melbourne.

Please refer to our website for further detail.



Stone



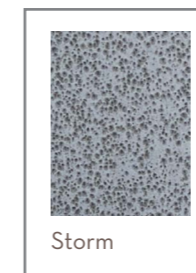
Bone



Saltbush



Coast



Storm



Rivergum



Poppyseed



Rose Quartz



Chai



Milk



Olive



Liquorice

Shop by glaze v



Basin colours

Stone* Coast, Storm, Poppyseed, Rivergum, Rose Quartz
Please note: Stone is only available in the Clay basin profiles.

Lighting colours

Stone, Bone, Saltbush, Coast, Storm, Rivergum, Poppyseed, Rose Quartz, Chai, Milk, Olive, Liquorice

**ROBERT
GORDON**

INTERIORS

robertgordoninteriors.com

[@robertgordoninteriors](https://www.instagram.com/robertgordoninteriors)

For all media enquiries please contact
Esther Navarro-Orejon
The Project Agency
esther@theprojectagency.com.au
+416 135 741