



KASKAD LAMP

We are delighted that you have chosen a lamp of our Kaskad family. This product is lovingly designed and responsibly made in Germany, because we care about the people who make our products and support local craftsmen and women.

Please keep in mind that smaller deviations in form and colour are no reduction in quality but an indication of the product's handmade and unique character.

We hope this high quality piece becomes a lasting part of your life, so please consider the following instructions and advices.

DETAILS

E27 | Bulb not included

SUGGESTED LIGHT BULB

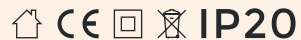


LED

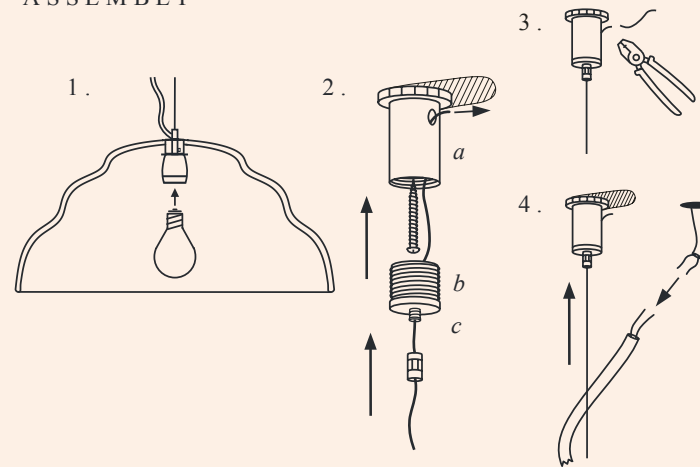
VOLTAGE

110 V - 220 V /
50 HZ

SPECIFICATIONS



ASSEMBLY



*The installation must be performed by an authorised electrician.
Please make sure the electricity is turned off before installation.*

1. Pull the cable and steel wire fixture through the opening of the lamp shade until it fits snugly.
2. Screw the ceiling mount (a) for the steel cable to the ceiling with a suitable wall plug. Now pull the steel cable through the steel cable holder (b) and the ceiling fixture (a) by pressing the nozzle (c) and tighten both threads. The steel cable only sits securely when the nozzle (c) is screwed shut. Check if the steel cable is securely fastened before the ceiling mount carries the weight of the lamp.
3. Cut off any excess steel wire coming out of the ceiling mount.
4. Connect the cable to the electricity.

MAINTENANCE

Remove dust with a feather duster.
Stains can be carefully removed with a damp brush.

ABSOLUTELY NO FORCE SHOULD BE HELD BY THE
ELECTRICAL CABLE, ONLY BY THE STEEL WIRE!



ATTENTION!

ONLY FOR USAGE IN DRY INTERIOR SPACES.

FOLLOW THE INSTRUCTIONS TO USE THE APPROPRIATE ILLUMINANTS.

SHUT OFF POWER TO THE CIRCUIT BEFORE INSTALLATION, RELAMPING OR DRY CLEANING.

CALL QUALIFIED ELECTRICIAN IF IN ANY DOUBT ABOUT THE EFFECTIVE GROUNDING OF THE POWER.

KEEP AWAY BODY PARTS AND INFLAMMABLE MATERIALS WHEN IN USE.

MIND A SUFFICIENT DISTANCE OF THE LAMP TO WATER AND DAMP SURFACES.

DO NOT CONTINUE USING A DAMAGED PRODUCT.

THE LAMP MUST NOT BE DISPOSED IN THE HOUSEHOLD WASTE.

KEEP THE PRODUCT AND PACKAGE AWAY FROM CHILDREN.