

# *the* KASKAD LAMP

*designed by Julia Jessen & Niklas Jessen | 2016*



*Kaskad Big and Kaskad in „Lavender“*

Bold rounded shapes and vivid waves are referencing to the flowing water of a cascade and define the cast of the Kaskad lighting. Made of ceramic in earthy tones, the lamp is hand manufactured in a traditional workshop in Germany. The dynamic between the unexpected material and superb workmanship, with its clear and linear expression, gives this interpretation of an archetypal suspension lamp its unique character.

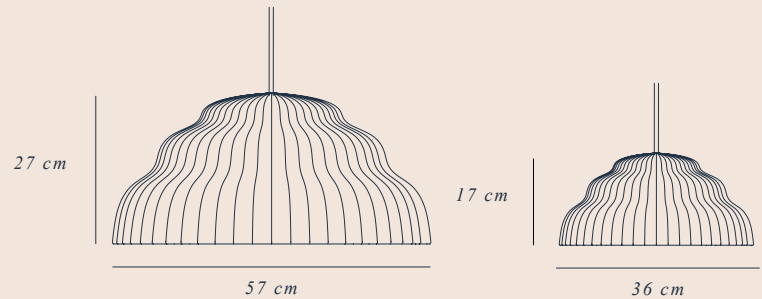
# *the* KASKAD LAMP

*Kaskad Big*

*Kaskad*

## DIMENSIONS

57 cm x 27 cm | 36 cm x 17 cm



## WEIGHT

11 kg | 7 kg

## PRODUCTION PROCESS

Hand manufactured by our ceramic master craftsman in a workshop in Germany.

## TYPE | ENVIRONMENT

Pendant lamp | Indoor

## LAMPSHADE

Material: Ceramic

Colors:



Lavender



Moss



Rust

## CABLE

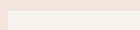
Textile cable | length: 2,5m



Orange



Mustard



Cream

# the KASKAD LAMP

## LIGHT SOURCE & ENERGY EFFICIENCY

E27 | Bulb is not included

Compatible with bulbs of the energy classes: A++ - E

Suggested lightbulb:



LED - 11 W



H - 40 W



I - 60 W

## SPECIFICATIONS

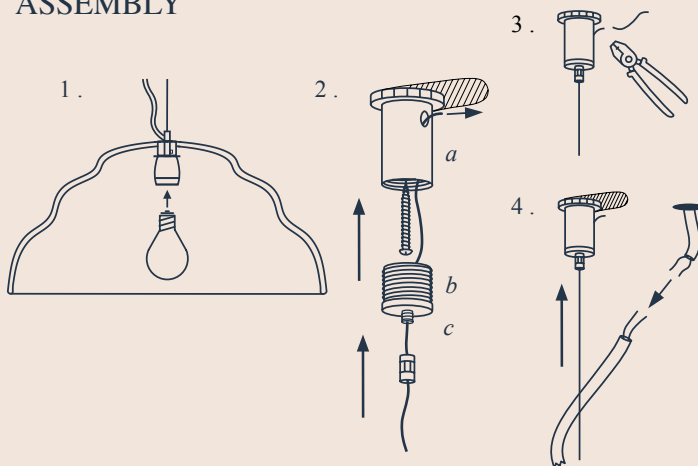


## VOLTAGE

220V - 240V | 50Hz

Other cords (voltage) on request.

## ASSEMBLY



1. Pull the cable and steel wire fixture through the opening of the lamp shade until it fits snugly.
2. Screw the ceiling mount (a) for the steel cable to the ceiling with a suitable wall plug. Now pull the steel cable through the steel cable holder (b) and the ceiling fixture (a) by pressing the nozzle (c) and tighten both threads. The steel cable only sits securely when the nozzle (c) is screwed shut. Check if the steel cable is securely fastened before the ceiling mount carries the weight of the lamp.
3. Cut off any excess steel wire coming out of the ceiling mount.
4. Connect the cable to the electricity.

*The installation must be performed by an authorised electrician.  
Please make sure the electricity is turned off before installation.*

## MAINTENANCE

Remove dust with a feather duster.

Stains can be carefully removed with a damp brush.

**ABSOLUTELY NO FORCE SHOULD BE HELD BY THE  
ELECTRICAL CABLE, ONLY BY THE STEEL WIRE!**