



EIKON LAMP

We are delighted that you have chosen a lamp of our Eikon family. This product is lovingly designed and responsibly made in Germany, because we care about the people who make our products and support local craftswomen and men.

Please keep in mind that smaller deviations in form and color are no reduction in quality but an indication of the product's handmade and unique character.

We hope this high quality piece becomes a lasting part of your life, so please consider the following instructions and advices.

DETAILS

E27 | Bulb not included

SUGGESTED LIGHTBULB



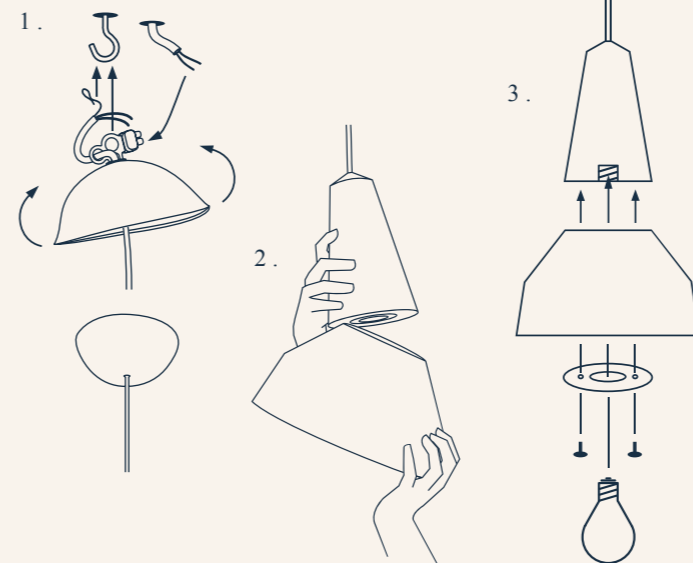
VOLTAGE

220 V - 240 V /
50 HZ

SPECIFICATIONS



ASSEMBLY



- Cut off the power before installation.*
1. Thread the cable through the cablecup and fit to ceiling as shown on the box. Connect the cable to the ceiling power and turn back the cablecup back to its original shape.
 2. Attach the lampshade to the magnets on the wooden base. Screw the security ring under the lampshade.
 3. Now you can insert the bulb and enjoy your lamp.

MAINTENANCE

Remove dust with a feather duster.
To remove fresh stains, wipe the surface with a lightly moistened cloth and dry it again with a soft cotton cloth.



ATTENTION!

ONLY FOR USAGE IN DRY INTERIOR SPACES.

FOLLOW THE INSTRUCTIONS TO USE THE APPROPRIATE BULB.

DISCONNECT FROM MAIN POWER BEFORE INSTALLATION, CHANGING OF BULBS OR CLEANING.

CALL QUALIFIED ELECTRICIAN IF IN ANY DOUBT ABOUT THE INSTALLATION OF YOUR LAMP.

KEEP AWAY BODY PARTS AND INFLAMMABLE MATERIALS WHEN IN OPERATION.

KEEP AWAY FROM WATER AND MOISTURE.

DO NOT USE IF THE PRODUCT IS DAMAGED.

NOT TO BE DISPOSED IN HOUSEHOLD WASTE.

KEEP PRODUCT AND PACKAGE AWAY FROM CHILDREN.