

(metal end of the optic) in the solution. *This may need to be cleaned more frequently depending on the level of usage.*

The Fiber Optic Jellyfish should be untangled and straightened at least once a week to ensure it is at its optimum condition.

Fiber Optic Safety

A risk assessment must be completed for each person who is to have access to the Fiber Optics before use. Do not allow the Fiber Optics to be put in a user's mouth under any circumstances.

Ensure the person using the Fiber Optics is under constant supervision, and do not allow the Fiber Optics to be put around a person's neck.

Troubleshooting

Q. The unit doesn't work.

A1. Is it switched on? If so,

A2. Are the fiber optic strands connected to the lightsource? If so,

A3. Has the unit scrolled through its colors? If not,

A4. Please contact us for further assistance.

Contact Details

For USA please email support@experia-usa.com

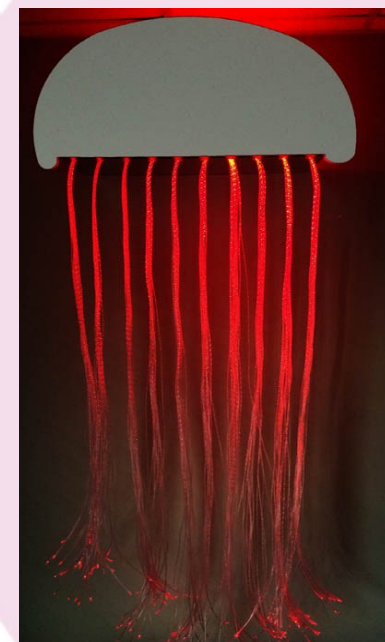
Telephone: (800) 882-4045.

Manufactured proudly in the USA by Experia USA, Inc.

© Copyright 2022 Experia USA, Inc. All rights reserved.

Experia is a registered trademark.

experia USA
multisensory for everyone



Superactive LED Fiber Optic Jellyfish 560040 Product Manual

For optimal results, please read and follow instructions carefully
Please keep for future reference

Experia USA, Inc.
2880 McEver Road
Bldg. 1 - D
Buford, GA 30518
(800) 882-4045
info@experia-usa.com

experia
multisensory for everyone

Please follow all warnings on the product and within this manual. If upon receipt of this product, the user suspects that the product is defective, and/or requires service or repair due to malfunction or damage to the product, please contact the manufacturer immediately. Please be aware that improper installation and/or use or misuse of this product may result in injury, death, or adverse reactions to its user. Failure to comply with these precautions or with specific warnings elsewhere in this manual violates safety standards of design, manufacture, and intended uses of the product.

Features

- Hundreds of shades of colors
- No electricity present in fiber optics
- Ergonomic design
- Completely silent
- Long life LED technology—no lamp to change...EVER!
- Cool running
- Low voltage transformer supplied
- Durable and easy to use
- Easy Installation
- 1 Year manufacturers guarantee (collect and return)

Pack contents

- 1 - Superactive LED fiber Optic Jellyfish
- 1 - 6 ft. Fiber optic sideglow harness
- 1 - Superactive Lightsource
- 1 - 8-button controller
- 1 - Low voltage transformer
- 1 - Qi Charging pad
- 1 - Wall charger for charging pad
- 2 - Wall brackets
- 4 - 8-32 x 5/8" machine screws
- 4 - 8-32 flat washers
- 4 - 8-32 lock washers
- 4 - 100# Drywall Anchors

Installation should be done by an experienced, competent person only. Requires a minimum ceiling height of 94"

The product **MUST** be fixed to a strong, solid wall using the correct fasteners. The fasteners used are dependant on the construction of your wall. The fasteners used should have a minimum rating of 50 lbs. We have included four anchors, each with a rated strength of 100 lbs. If you are installing on a surface other than drywall, please consult with a qualified maintenance person. **NOTE:** If your wall construction has wood wall studs, and you can align one of the brackets with a wall stud, we highly recommend that you do so. In those cases, you will need 3 lag screws in place of the provided anchors for that bracket.

(not charging), and green when charging. (this can be hard to see under the controller).

4. The controller itself has a green LED next to the red button. When successfully aligned, it will illuminate to indicate charging. Simply leave it in place.
5. Just remove from the charger to use, and place back on the charger when not in use.

Re-setting Your Qi-Controller

When the battery is completely discharged , OR when the controller is not used for some length of time, the safety circuit inside the battery can go into a default mode. When this happens, the battery can no longer "talk" to the circuit board, and your controller will not function properly.

If this happens, do the following:

1. Turn the power button on the side of the controller to the **OFF** position.
2. Count to 10.
3. Turn the power button back to the **ON** position.
4. Place the charger on the charging pad and charge the controller for at least 4 hours.

You can check to make sure the re-set worked after charging for 5 minutes. While **LEAVING THE CONTROLLER ON THE CHARGING PAD**, turn on the star carpet and use the controller. It should now be functioning properly. If not, contact Experia USA for further troubleshooting help.

Cleaning and Maintenance

The Jellyfish should be cleaned with a damp soft cloth or sponge, and an approved, non abrasive cleaning agent or antibacterial solution. Ensure no liquid enters the lightsource.

The unit has been designed for use by people with special needs, however this does **NOT** mean it is impossible to damage.

Soak the fiber optic strands in the solution and clean with a cloth before rinsing and allow this to dry naturally. Do not place the termination

Qi-enabled Controller

ON/OFF button: We ship the controller to you in the OFF position to prevent the battery from draining during shipping. The **FIRST** thing you must do is turn the button to the **ON** position. Once this is done, there will be no need (under normal circumstances) for you to ever turn it to the OFF position.

These controllers have an internal lithium-polymer rechargeable battery, which is charged wirelessly with the included charging pad.



Button Off



Button On

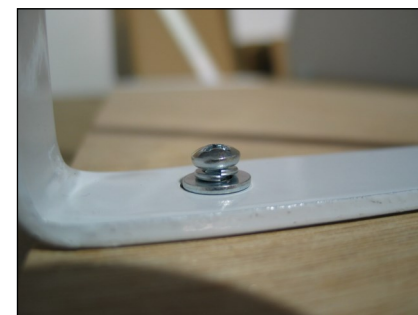
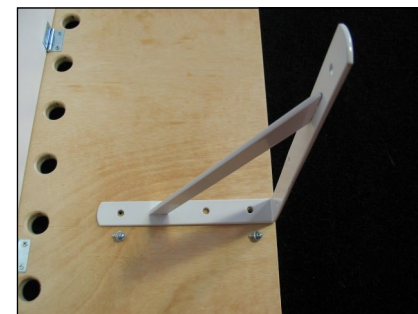
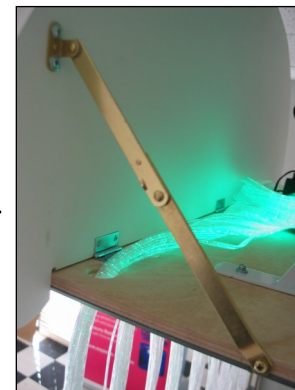
Your star carpet may have been built a while ago (2-3 weeks), so it is possible - even likely - that the controller is in need of a charge. We recommend that you charge the controller for at least 4 hours, and preferably overnight, prior to the first use. After that, simply place the controller back on the charging pad at the end of every day, and you'll never need to replace batteries again!

Charging your Qi-enabled Controller

1. Your controller is equipped with a built-in wireless charging system and charging base.
2. Simply plug the supplied USB Charger into a wall outlet, and then plug the Qi charging pad into the wall charger.
3. Inside the controller is an inductive coil. This pulls electricity from the charging pad, which charges the battery. This coil is located directly under the RED button of the controller. Simply align the controller with the RED button directly over the charging pad, and set it down. The charging pad has an LED light that is RED when in standby mode

These instructions assume you will use all six of the provided anchors.

1. Remove all the packaging and verify that you have all the correct items.
2. The white jellyfish top is hinged to the "base". Gently un-fold the top from the base until it is at 90 degrees.
3. Lock in in place by ensuring that the support bracket (shown, right) is locked in place.
4. Align a bracket to the mounting holes as show, right.
5. Put one lock washer and one flat washers on each bolt, then thread them into the Jellyfish base (below, right).
6. Determine where you wish to mount the Jellyfish. Locate the nearest electrical outlet. The location of the outlet you plan to use will determine which side of the Jellyfish wood base that you will mount the lightsource.

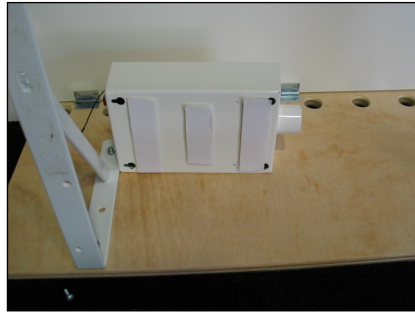


In this example, we are aligning the lightsource to the right side of the Jellyfish. If your electrical outlet is to the left of the installation location, you can reverse the location to the left side.

7. Place the lightsource onto the Jellyfish wood base as shown, right. (Depending on the type of Jellyfish you purchased, your lightsource may be a different size. This does not matter).



8. Peel the adhesive off of the Velcro strips (image, right) and press the lightsource firmly down onto the wooden base in this location.
9. Now, remove the lightsource, keeping one side of the Velcro in place on the board. The rest of the installation will be easier without the lightsource in place.



10. Determine the height at which you wish to install the Jellyfish. We recommend that the fiber optics be a minimum of 6" off of the floor, or optimally at 18" if your ceiling height permits. **NOTE:** The top anchor for your brackets should be a minimum of 5" below the ceiling to provide proper clearance for the Jellyfish.
11. Once you have decided where and at what height you wish to mount the Jellyfish, hold the jellyfish in place, level it, and mark the anchor locations through the brackets onto the wall (Mark the top and bottom holes in the bracket. The center hole is not used).
12. Set the Jellyfish aside and install the anchors at the marks. **HINT:** Use a level to make sure the marks on the left are level with the marks on the right.
13. Now, with some helpers, lift the Jellyfish up to the anchors, and screw into place. Make sure the anchor screws are fully tightened.
14. Peel off the protective coating from the mirror on the bottom of the base. This is easier to do before the fiber optics are threaded.
14. Remove the fiber optics from the bag. There are approximately 150 strands of fiber optics. Each hole in the Jellyfish base should get 15 strands, but you can adjust this if you prefer to have them distributed differently. **HINT:** It is easier, and will prevent tangles, if you count out the strands next to the metal "termination" and NOT from the ends of the strands.
15. Count out 15 strands and thread them through the first hole.
16. Repeat for the remaining 9 holes. Then, make any adjustments you want. You can always change this later as well if desired.
17. Replace the lightsource onto the Velcro strips. Press down firmly.

18. Put the end of the termination into the lightsource (image, right).
19. Plug the supplied Low Voltage transformer into the back of the lightsource. **NOTE: In this instruction sheet, the images show the IRiS lightsource, which is the same size as the Superactive lightsource and larger than the Calming lightsource. The Calming lightsource has a small 2.1mm socket.**



20. If you have the larger lightsource and transformer, and if you plan on keeping the large transformer on the wood base, we recommend that you screw it in place. If you do this, **USE SCREWS THAT ARE 1/2" OR SHORTER.** Otherwise, you will damage the mirrored surface on the bottom of the Jellyfish.



21. Plug the transformer into the electrical socket, and ENJOY!

Please note: Only use the transformer supplied. Use of a different transformer may result in damage to the product and void the warranty.

Modes of Operation

Superactive mode is activated by using the 8 Button Wireless Controller to operate the Fiber Optics.

Calming mode is activated when the 8 Button Wireless Controller has been left dormant for 5 minutes. In this mode the Fiber Optics color sequences automatically.