

T2 Split Flap Installation Manual



1. Prepare the servo, control horn, steel linkage and glue/hot melt glue



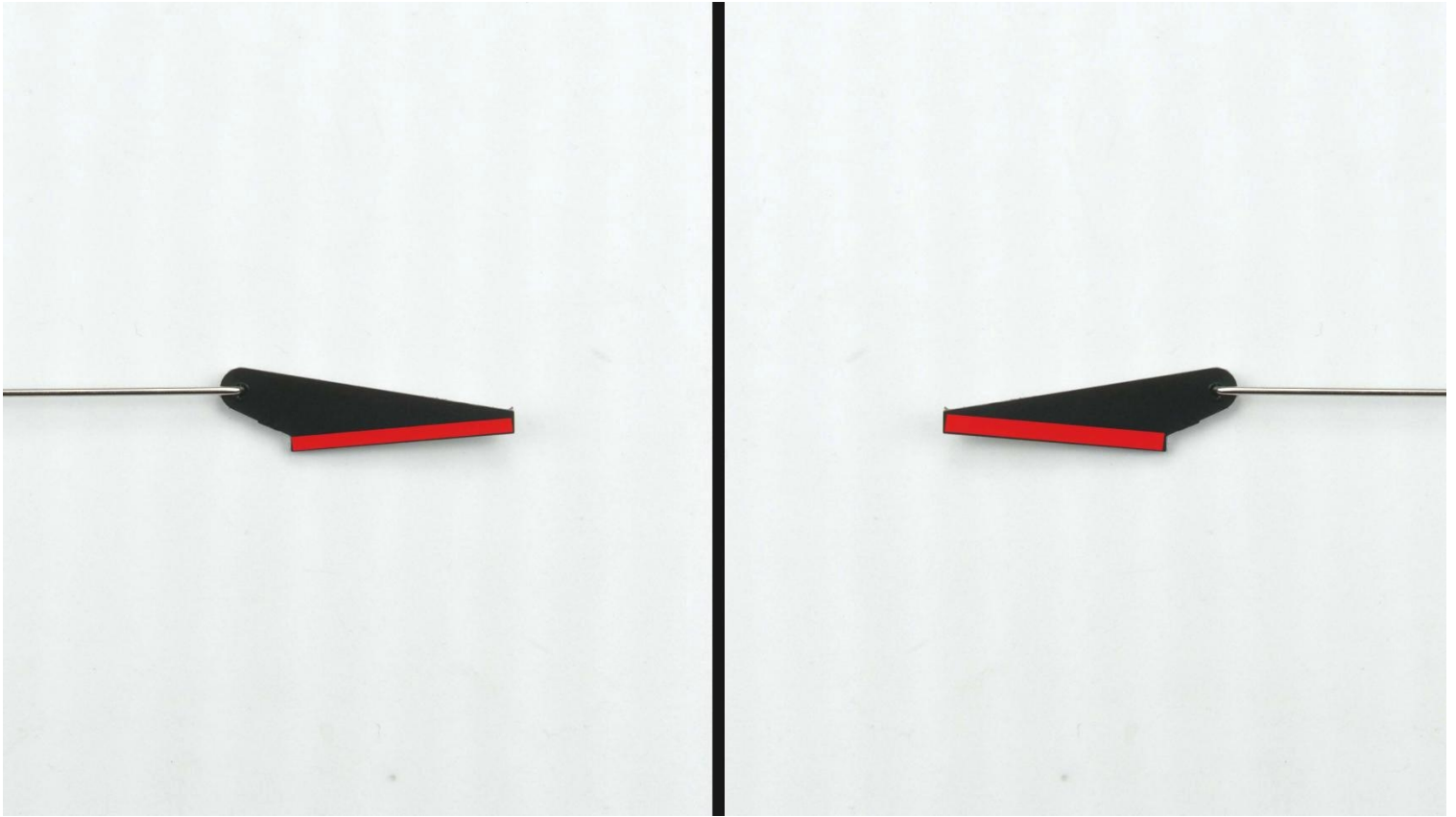
2. Slot the steel linkage into the control horn



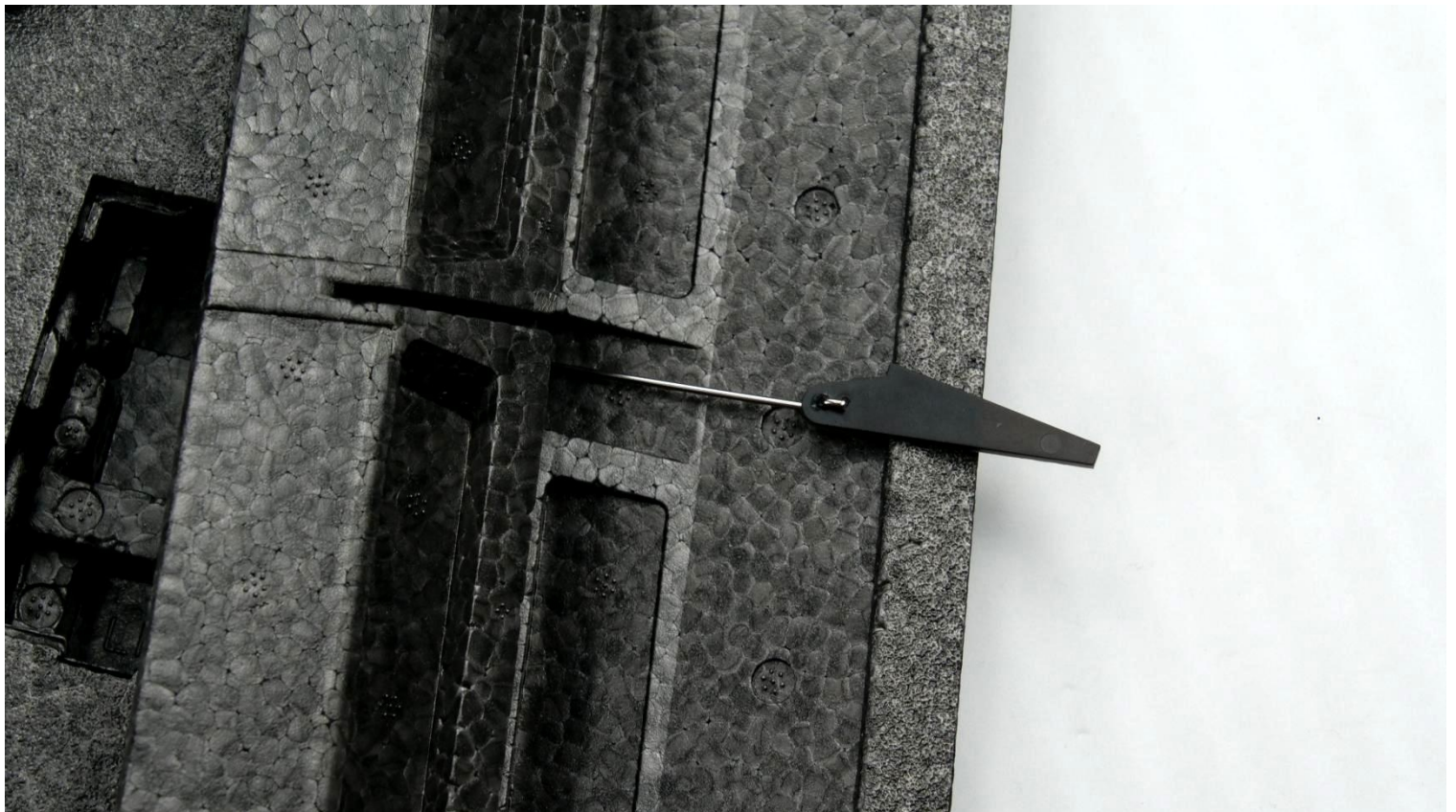
T2 Split Flap Installation Manual



3. Apply glue to the area highlighted in Red



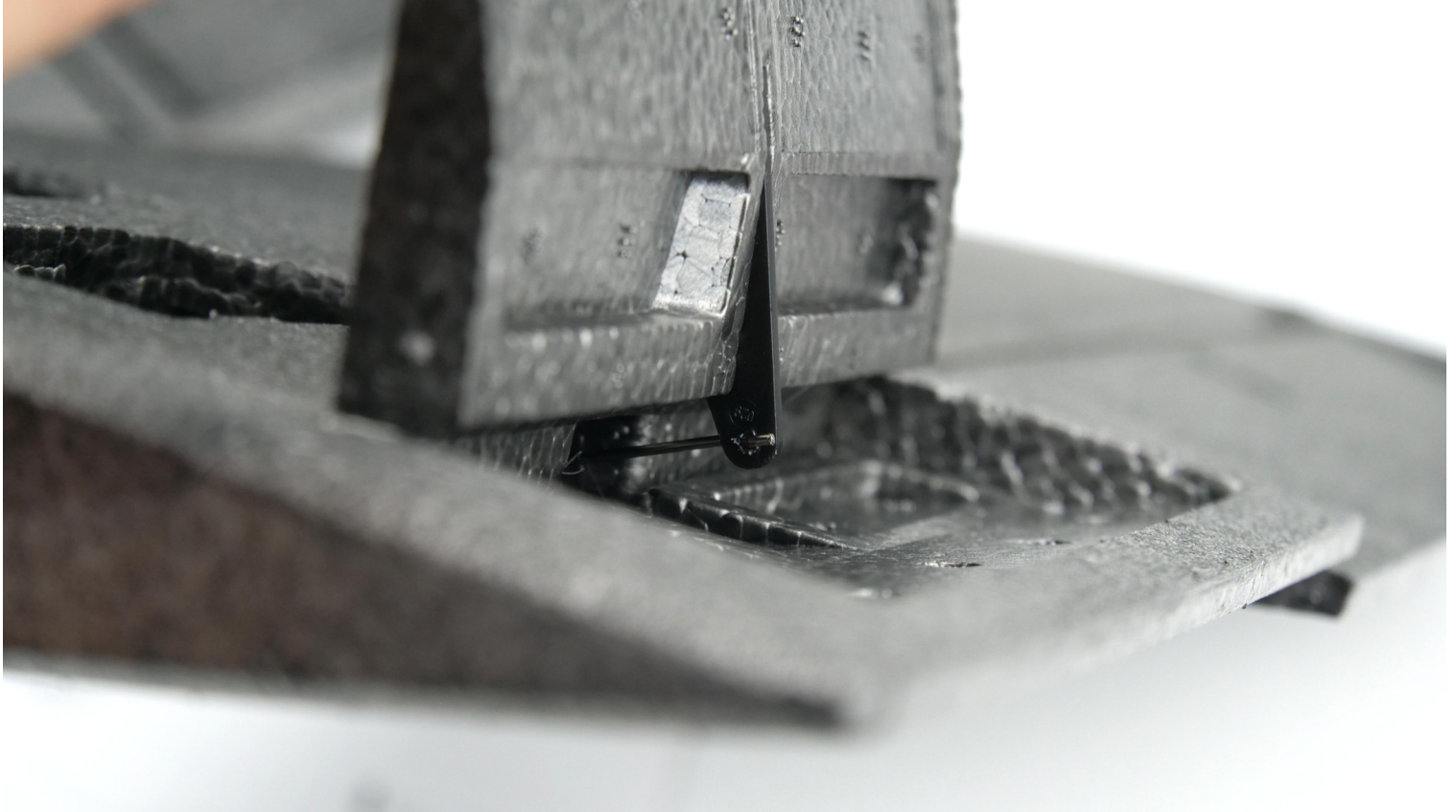
4. Slot the steel linkage into the opening beneath the split flap



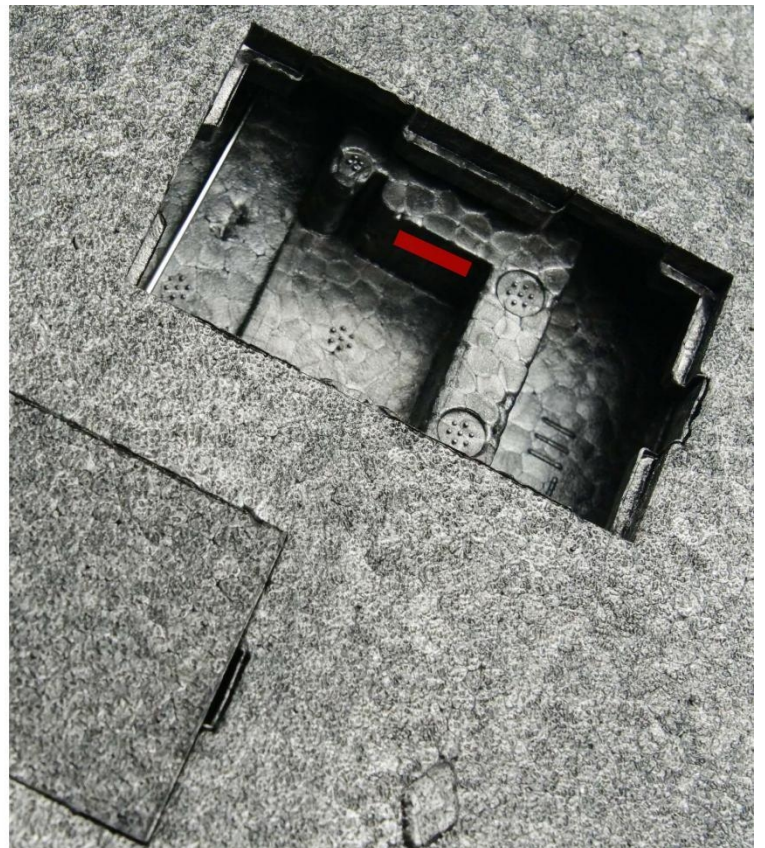
T2 Split Flap Installation Manual



5. Install the control horn to the slot provided, ensure that it's fully seated in and wait for the glue to dry.



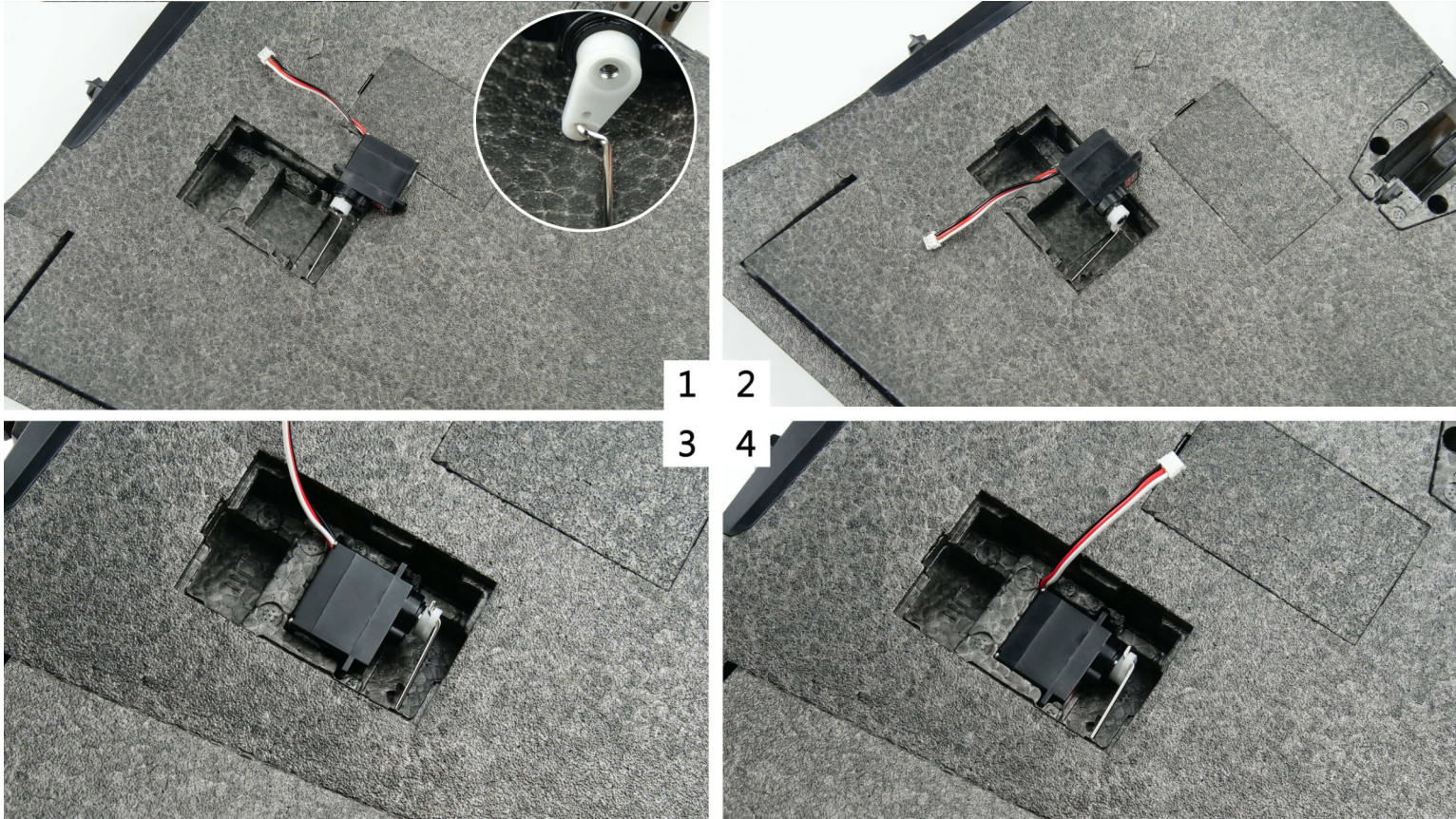
6. Apply glue to the side walls as shown for ease of removal when needed in the future



T2 Split Flap Installation Manual



7. Slot the steel linkage into the servo horn and install the servo into the provided bay



8. Slot the servo wire into electronics bay II and connect to the flap connector found inside. Then repeat on the other wing.

