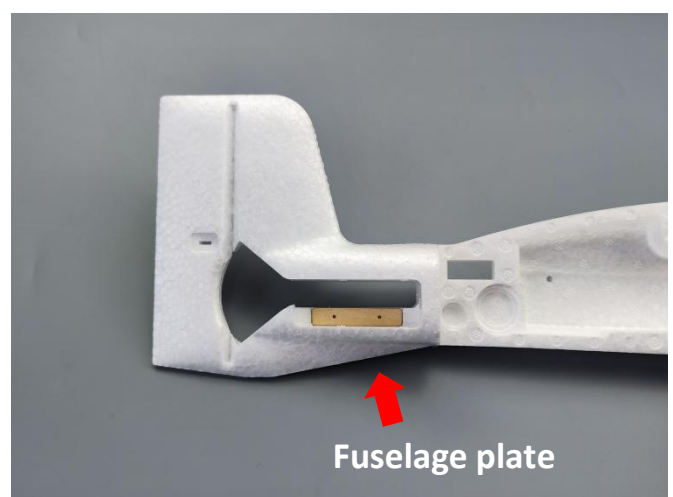
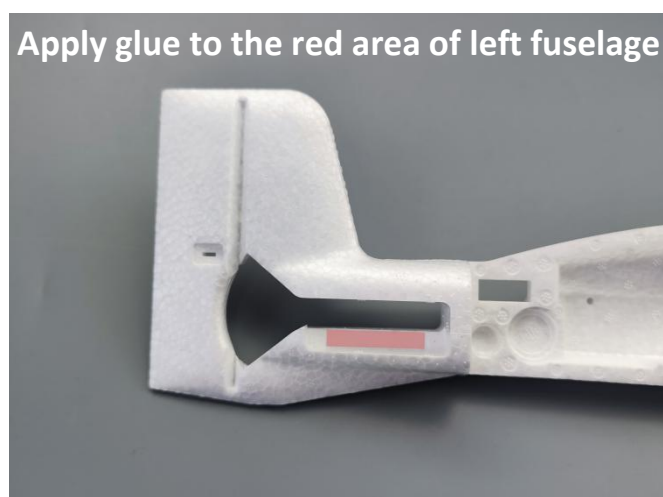
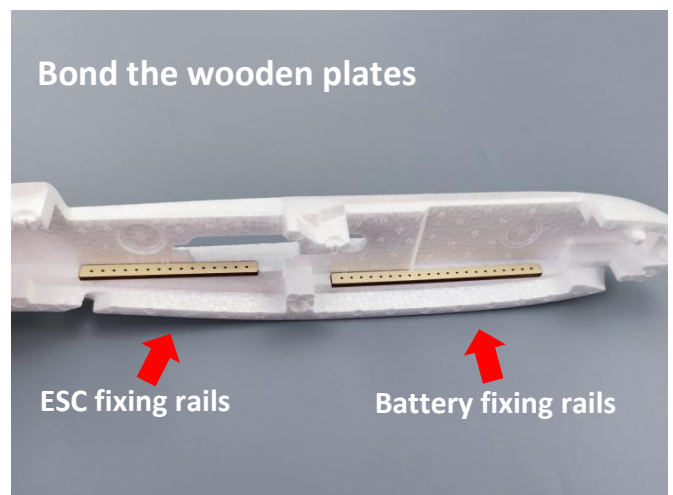
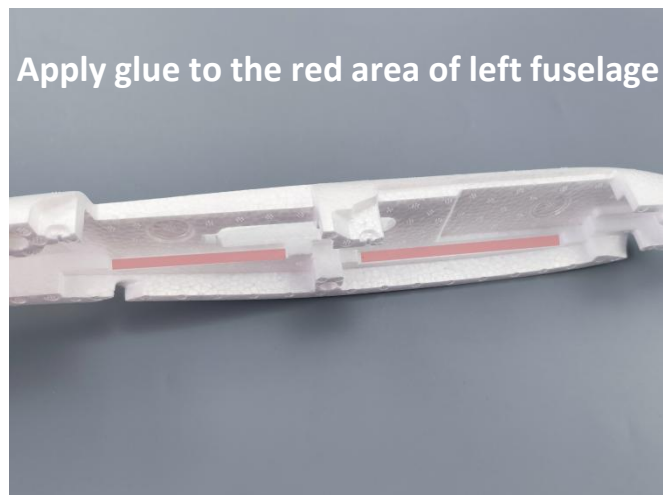
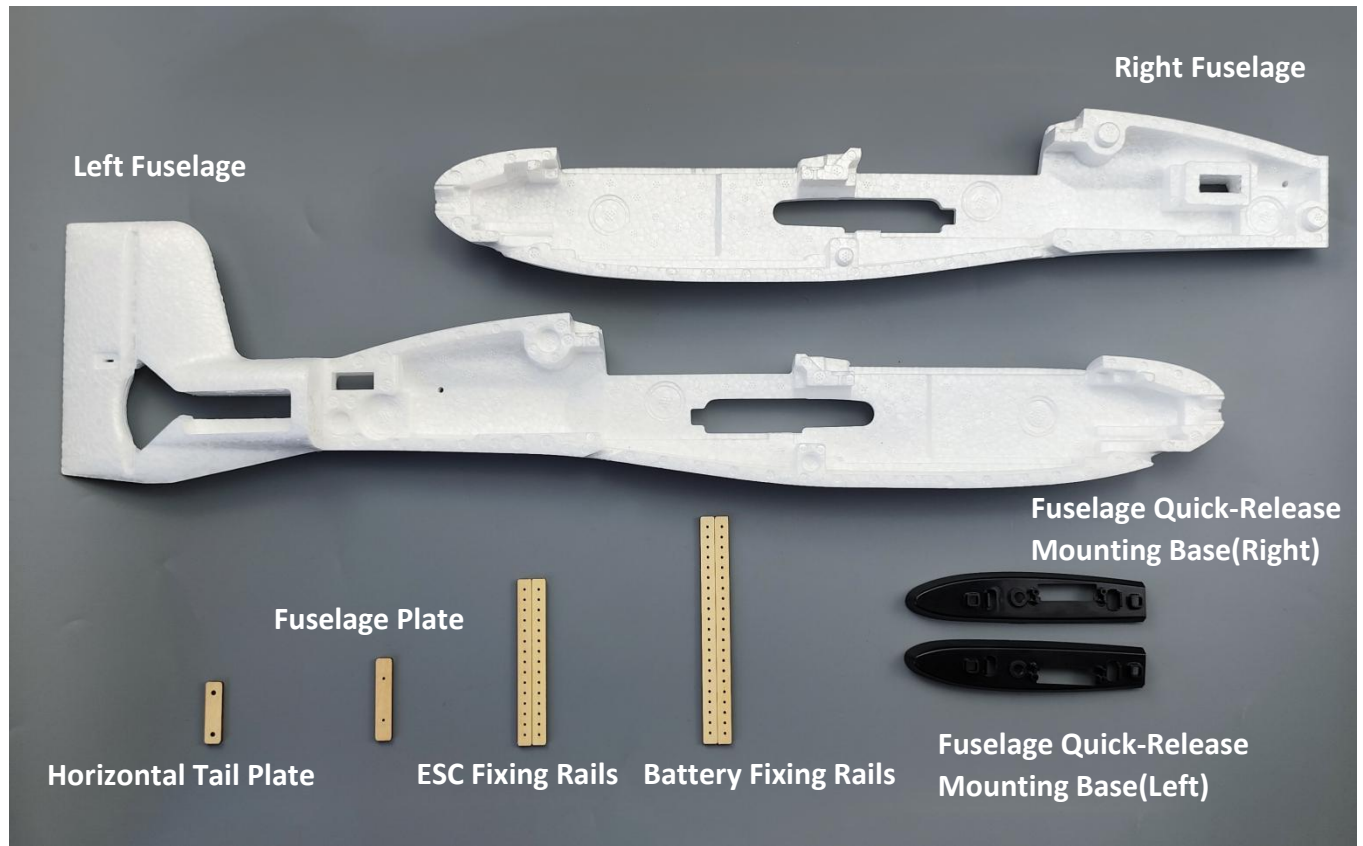


H-1 Assembly Guide

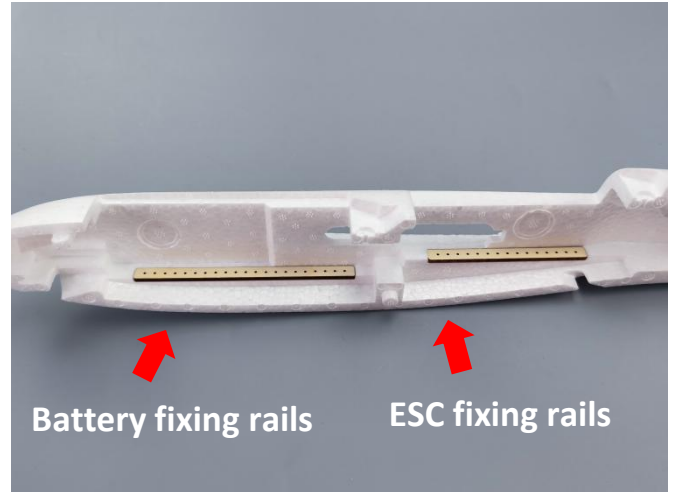
Fuselage Assembly

Bond the wooden plate and fuselage quick-release mounting base

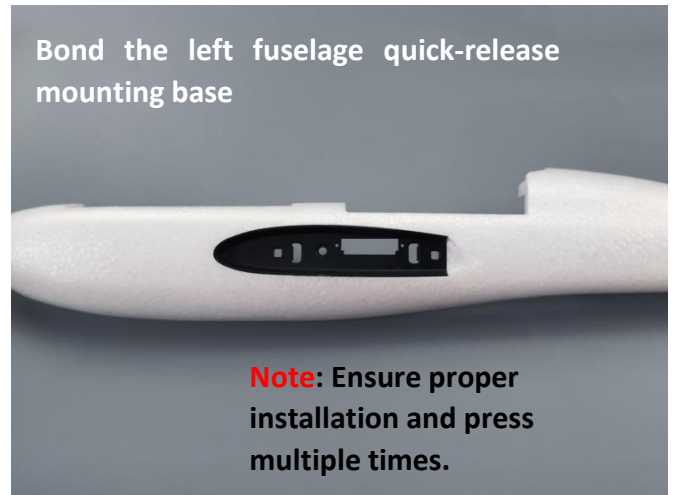


Fuselage Assembly

Bond the wooden plate and fuselage quick-release mounting base

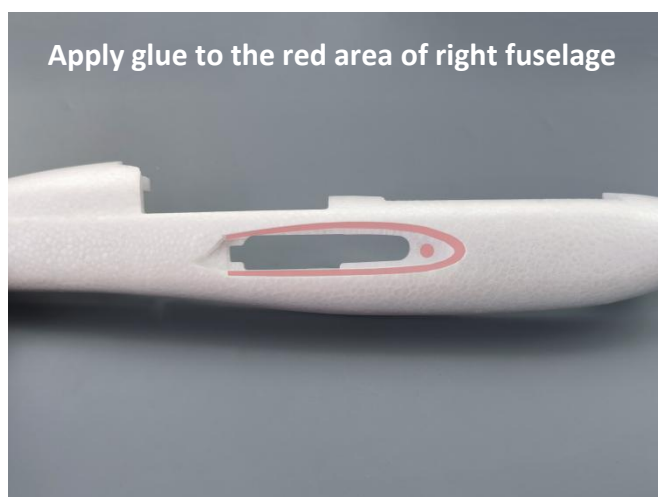


Apply glue to the red area of left fuselage

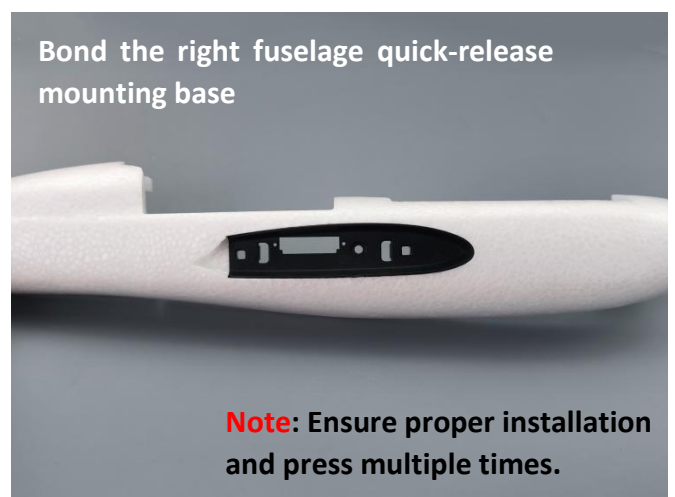


Bond the left fuselage quick-release mounting base

Note: Ensure proper installation and press multiple times.



Apply glue to the red area of right fuselage



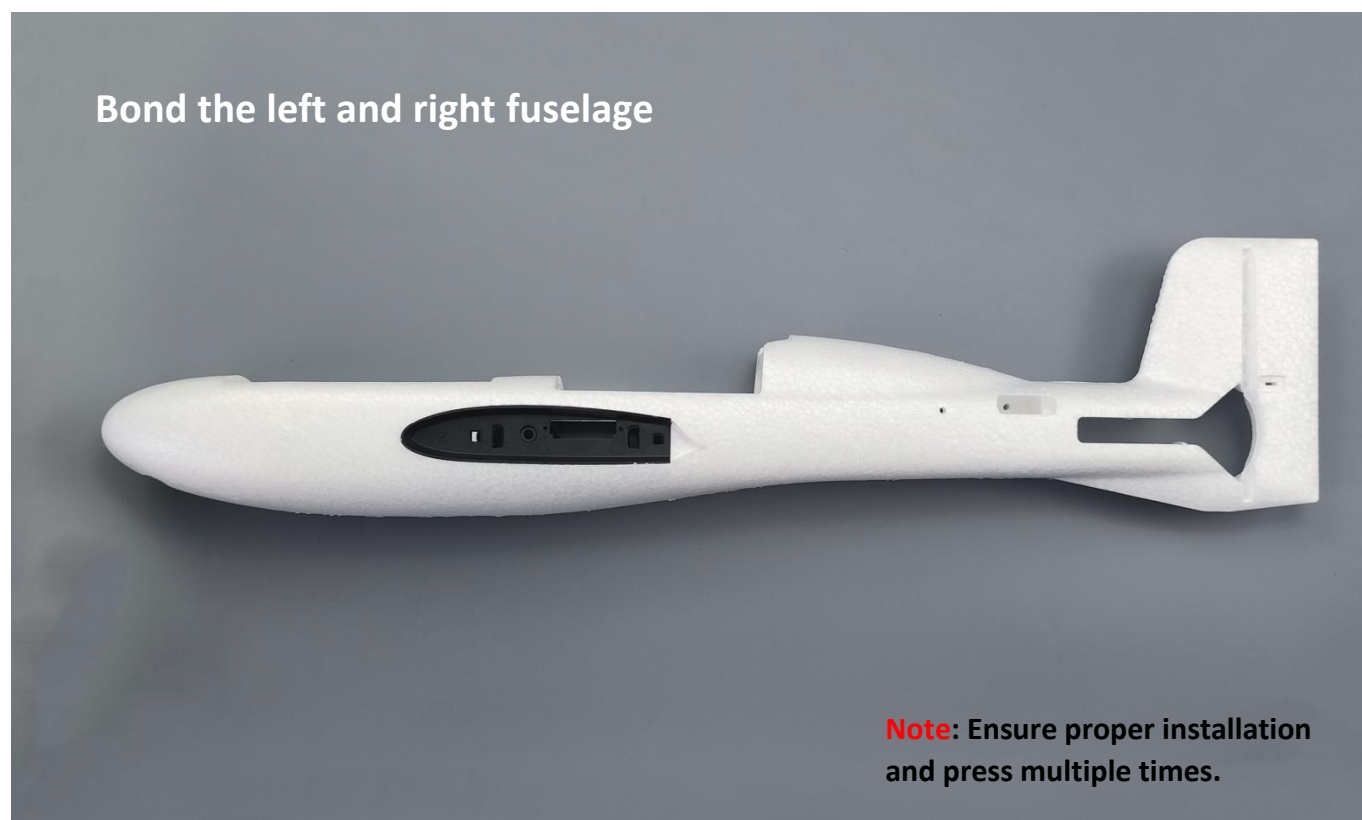
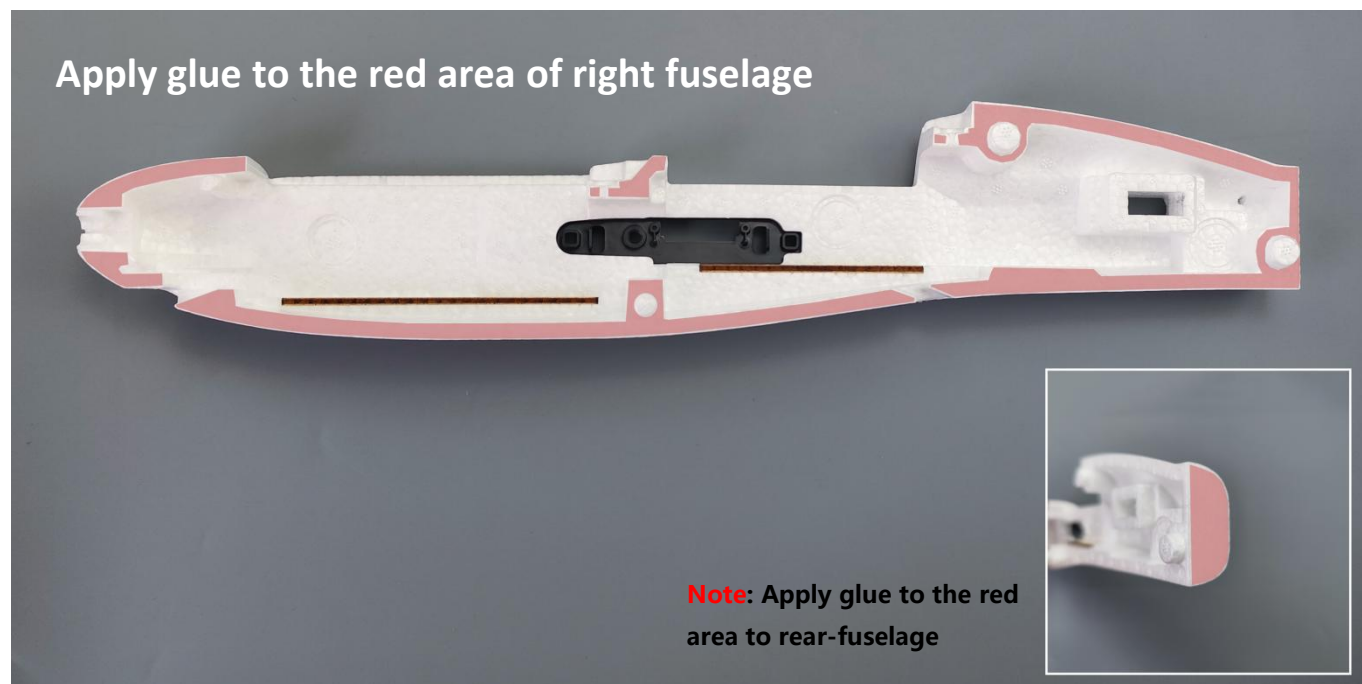
Bond the right fuselage quick-release mounting base

Note: Ensure proper installation and press multiple times.

Note: Ensure proper installation and press multiple times during adhesion, press as needed to avoid improper adhesion.

Fuselage Assembly

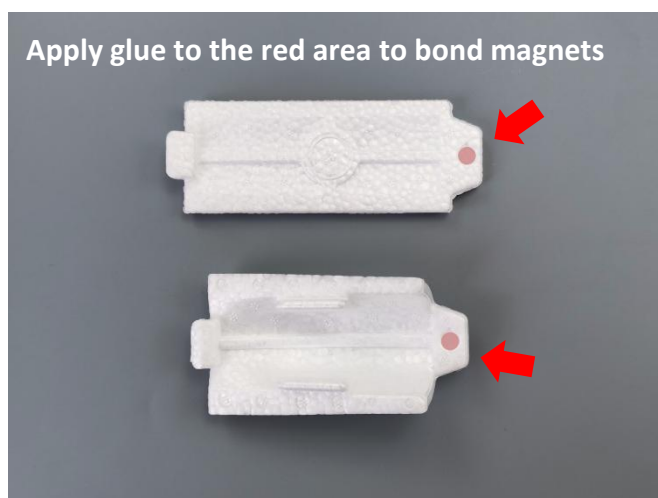
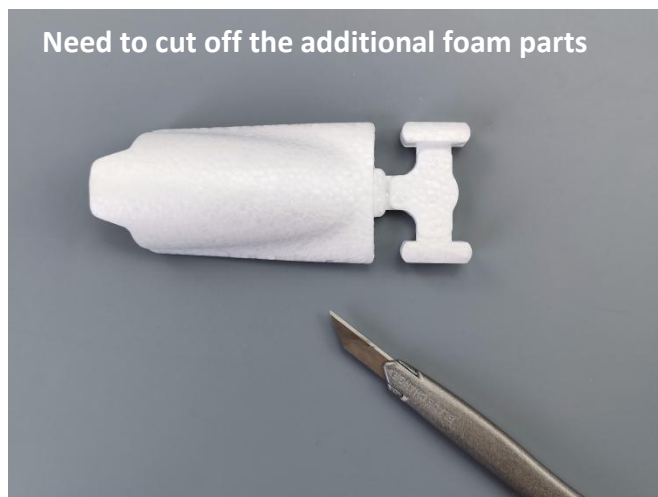
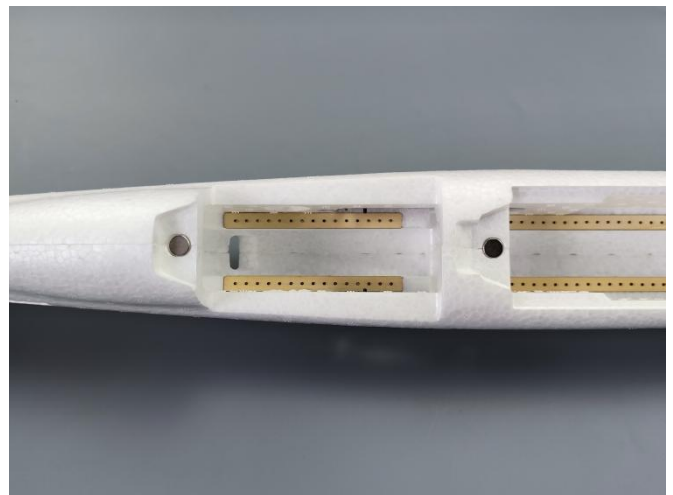
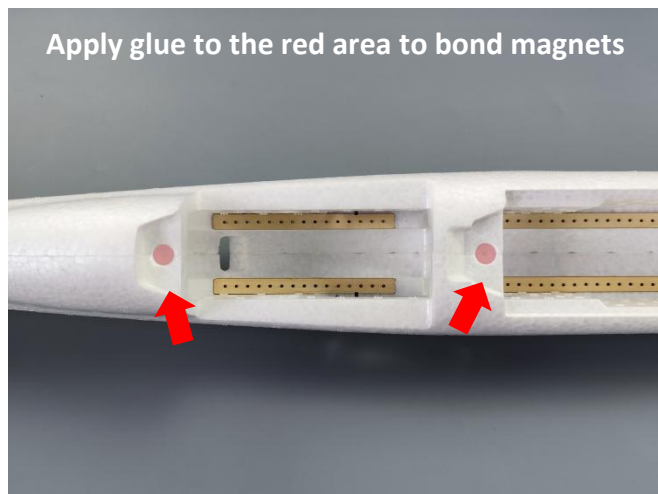
Bond the left and right fuselage



Note: Ensure proper installation and press multiple times during adhesion, press as needed to avoid improper adhesion.

Fuselage Assembly

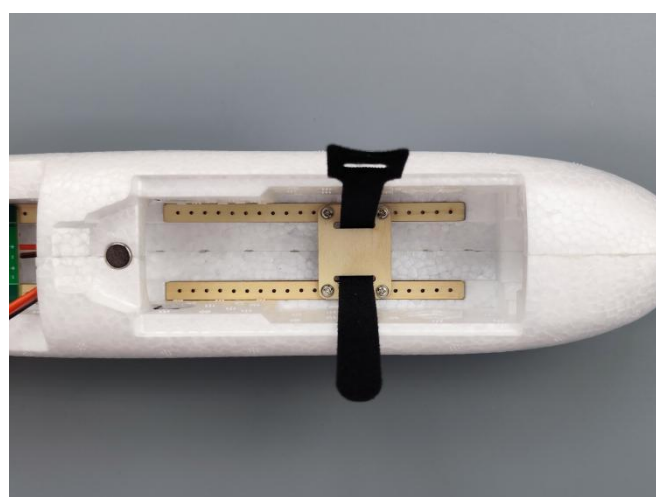
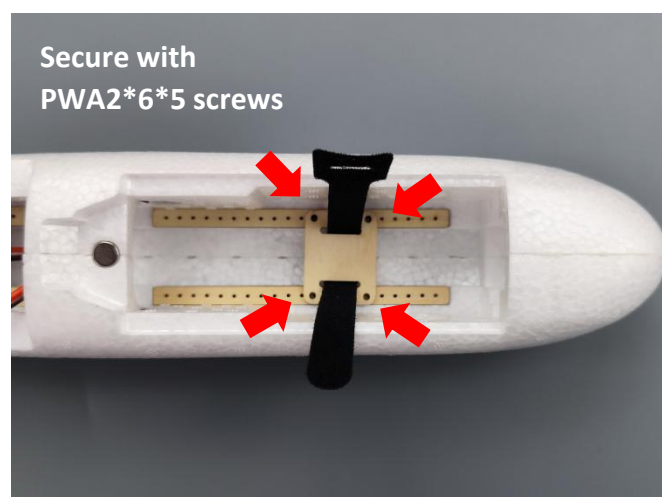
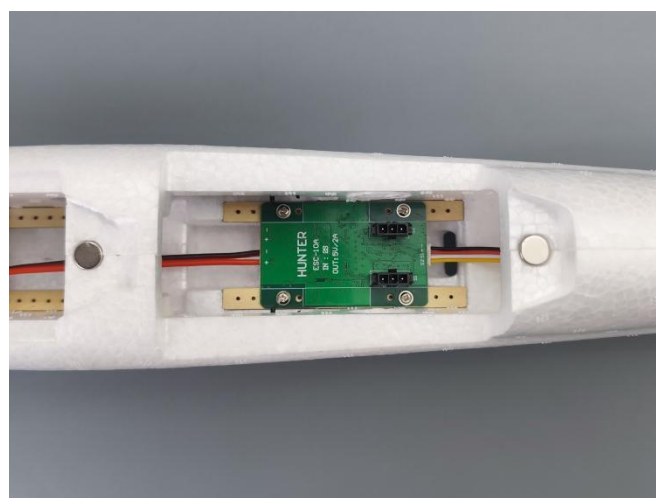
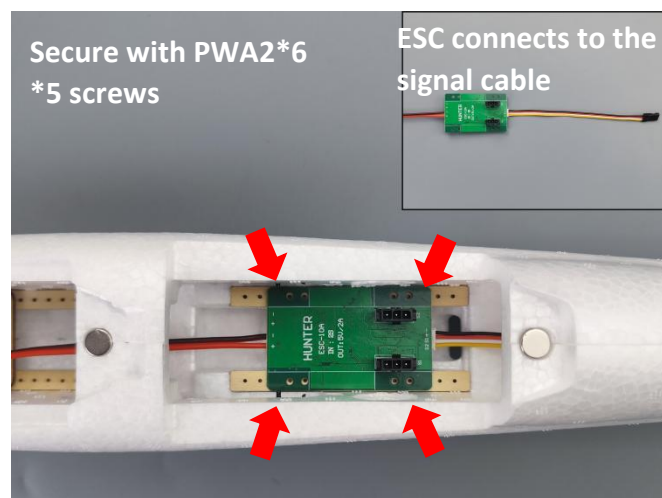
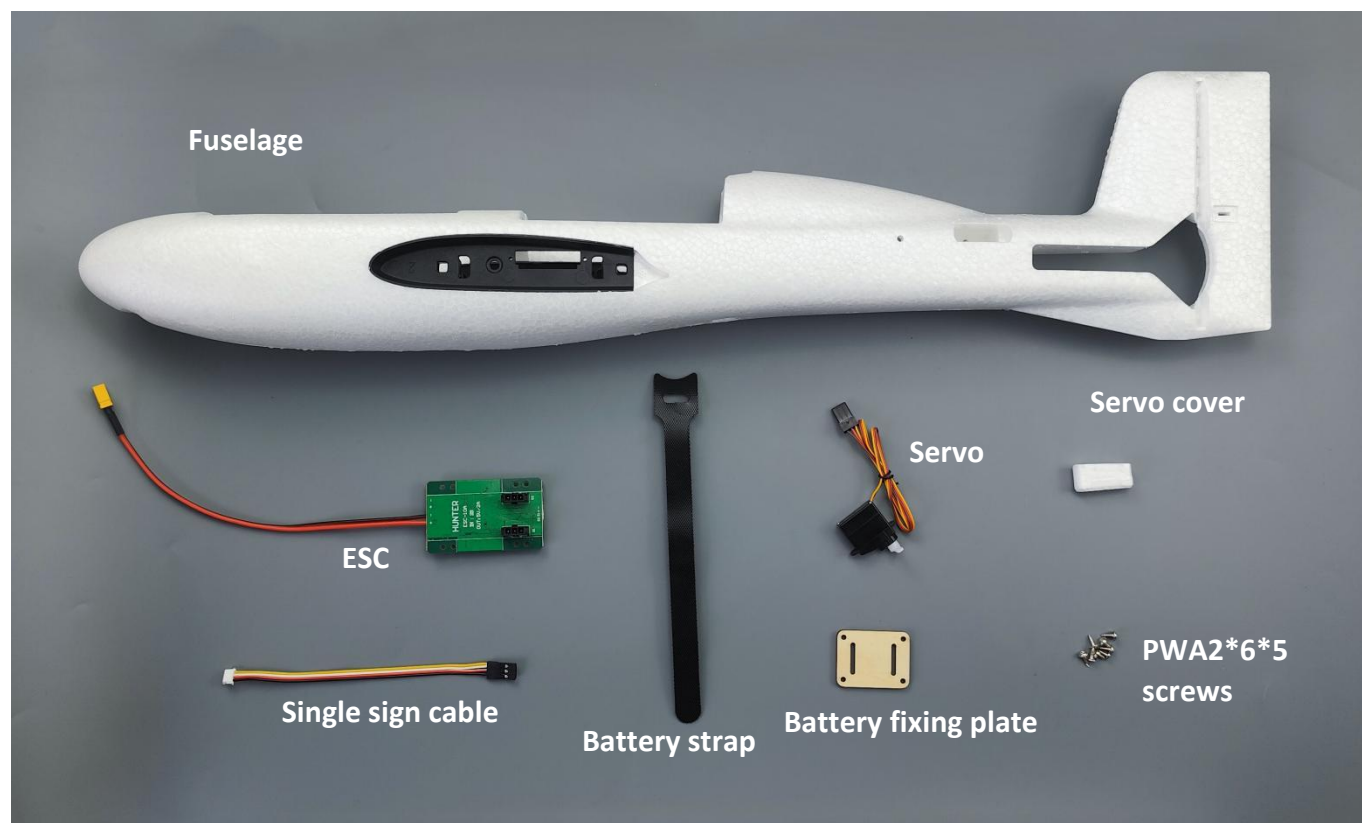
Bond magnets



Note: Ensure proper installation and press multiple times during adhesion, press as needed to avoid improper adhesion.

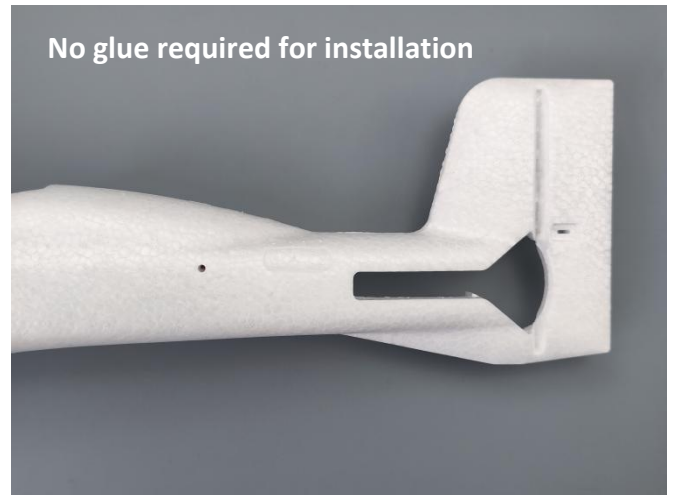
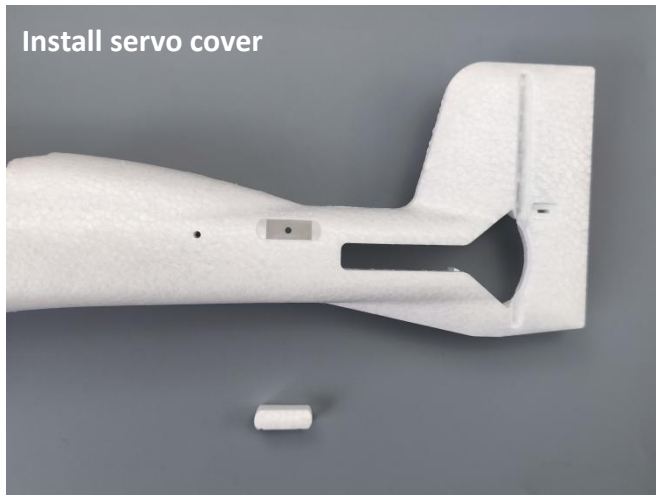
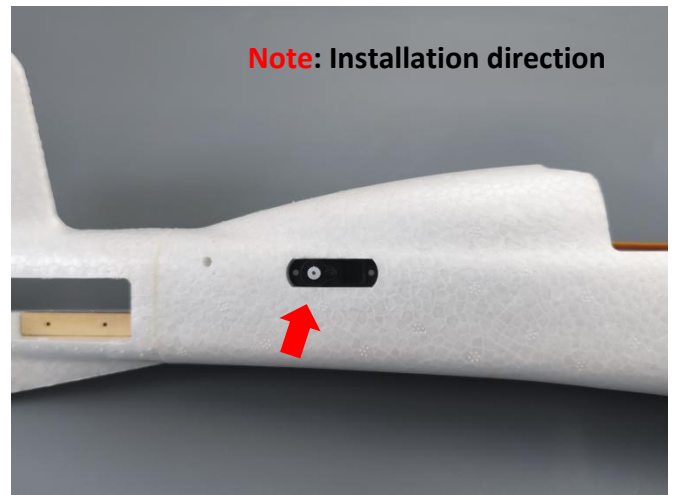
Fuselage Assembly

Install the electronic components and battery mounting base



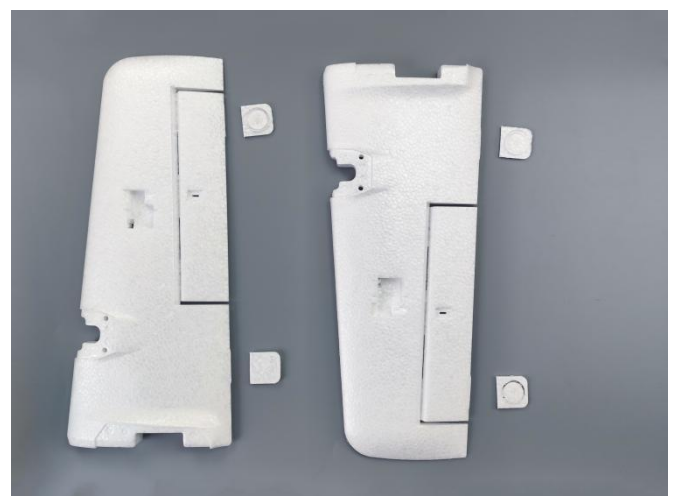
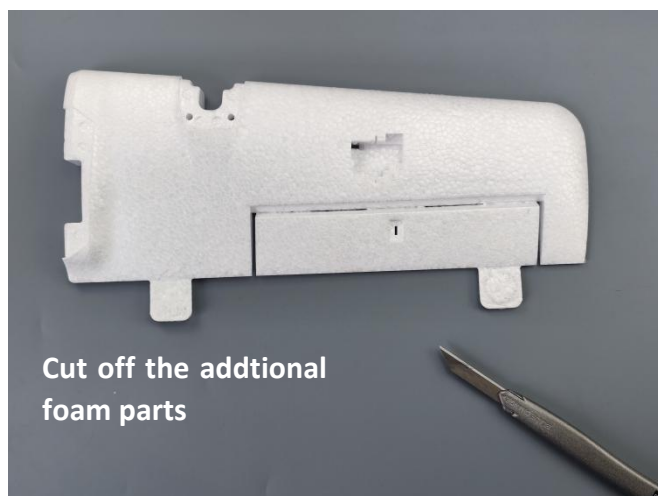
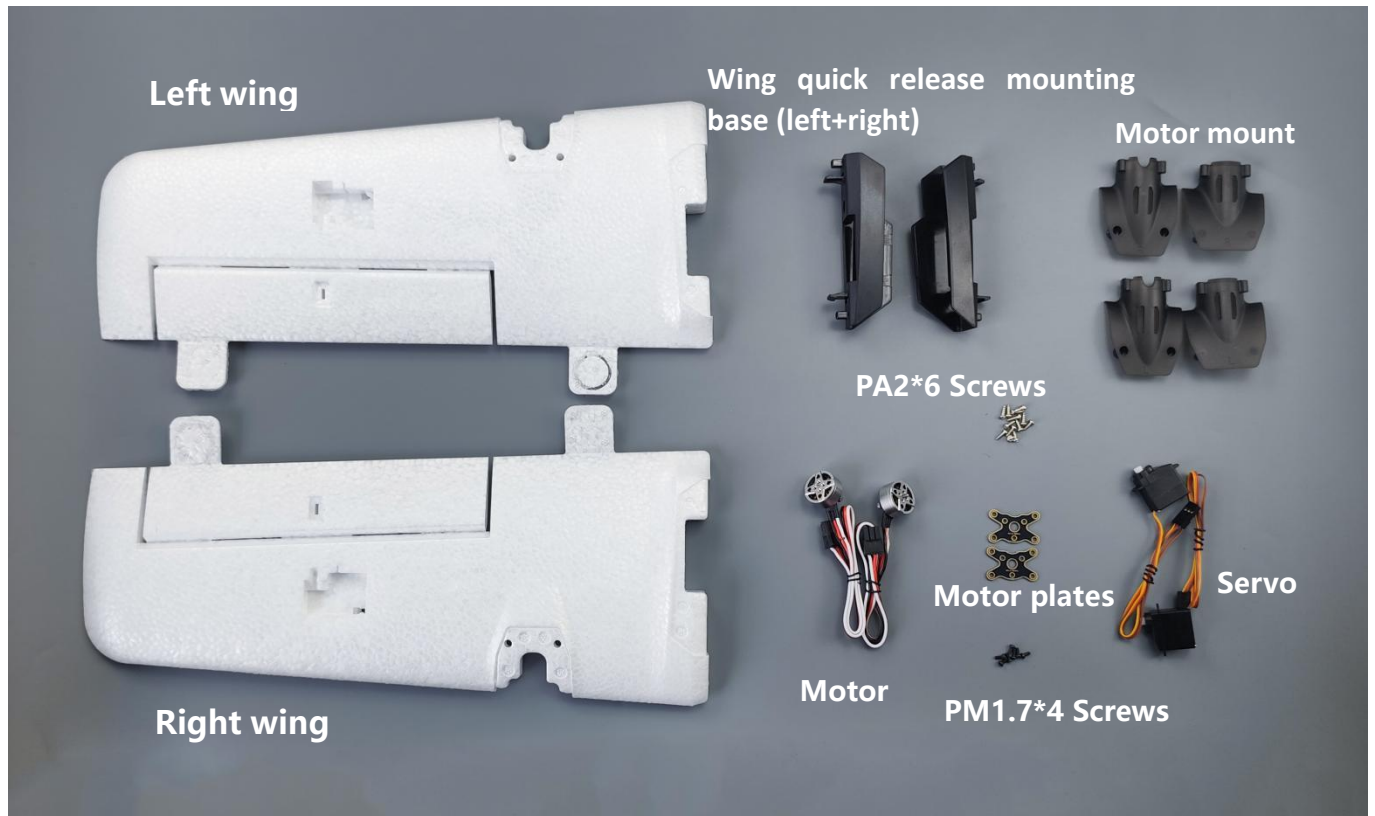
Fuselage Assembly

Install servo



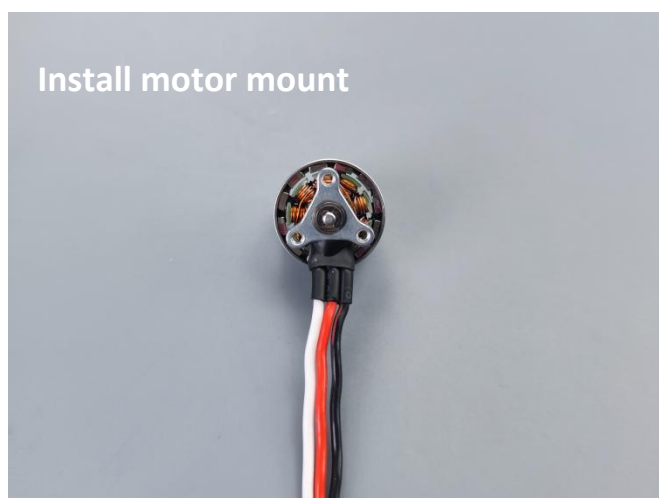
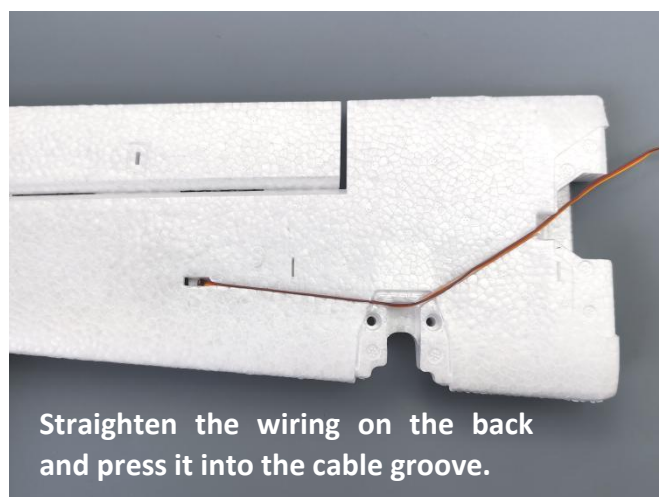
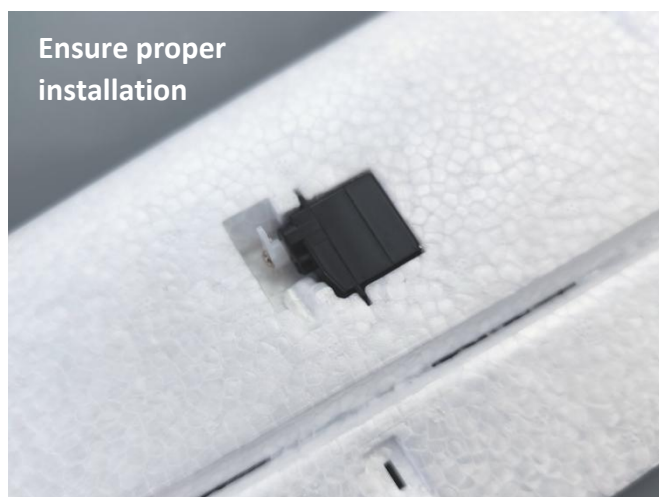
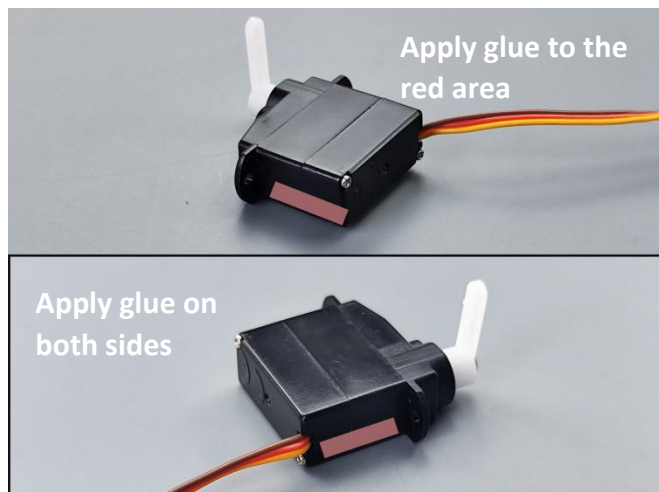
Wing Assembly

Need to prepare:



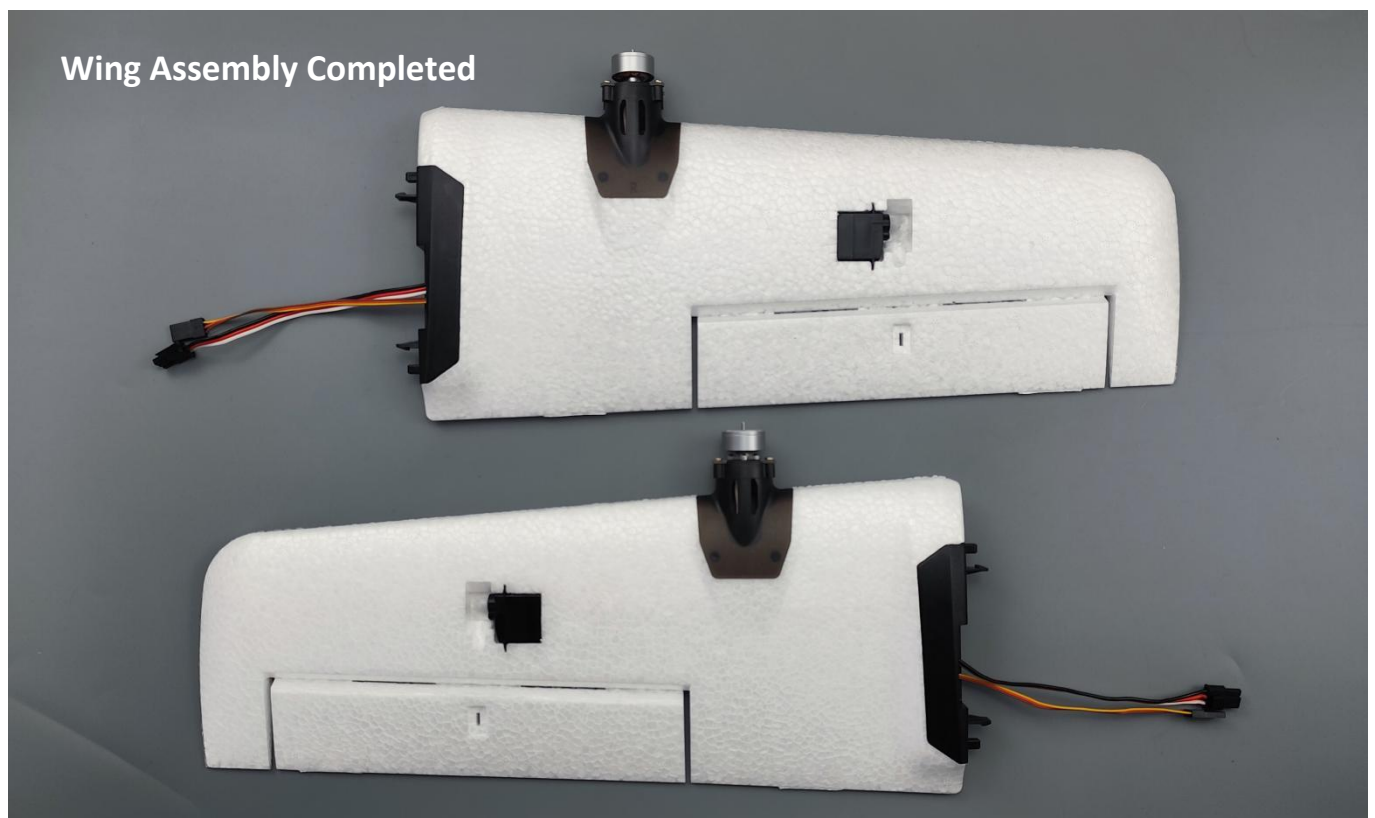
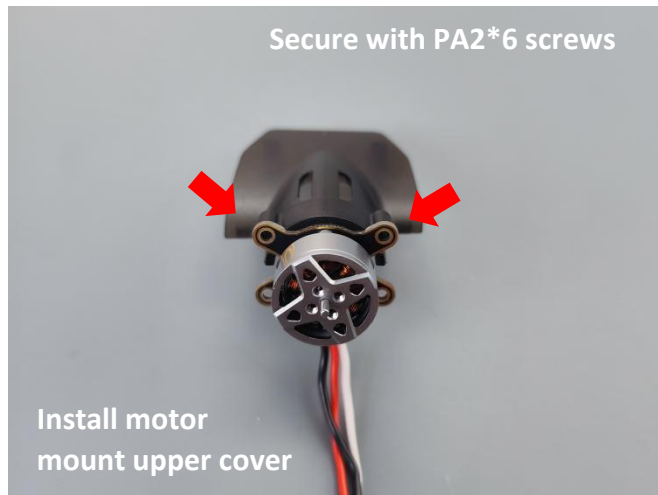
Wing Assembly

Install wing electronics



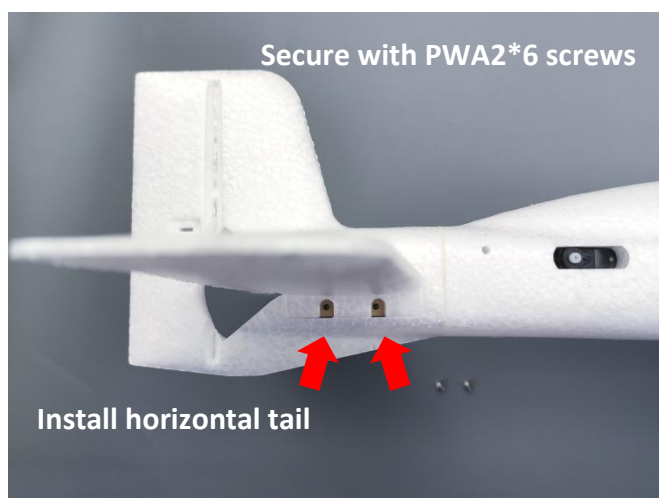
Wing Assembly

Install Wing Electronics



Horizontal Tail Assembly

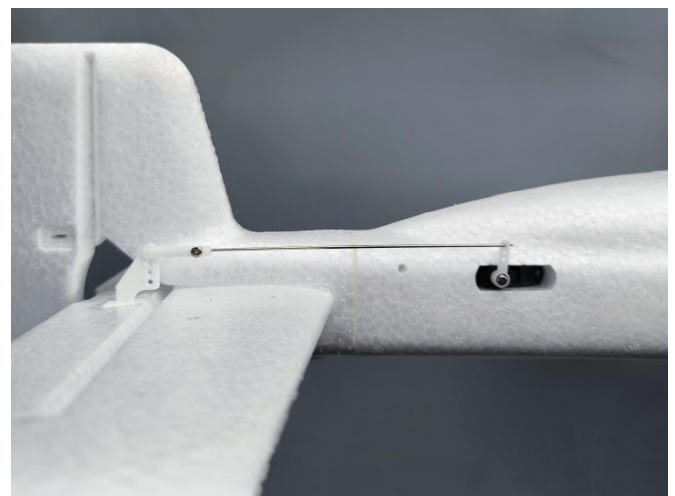
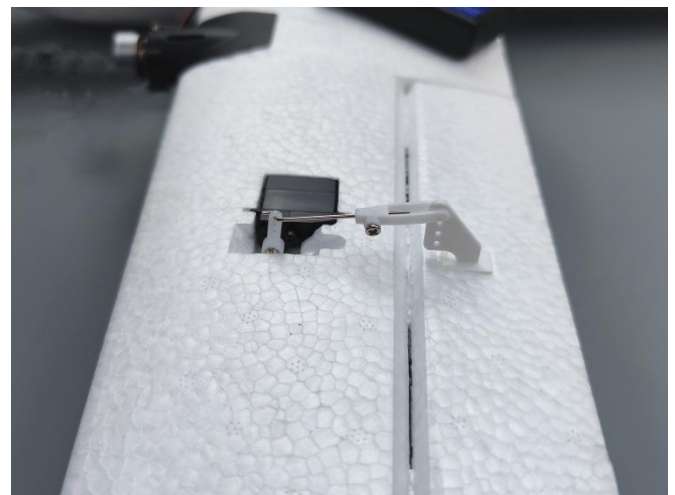
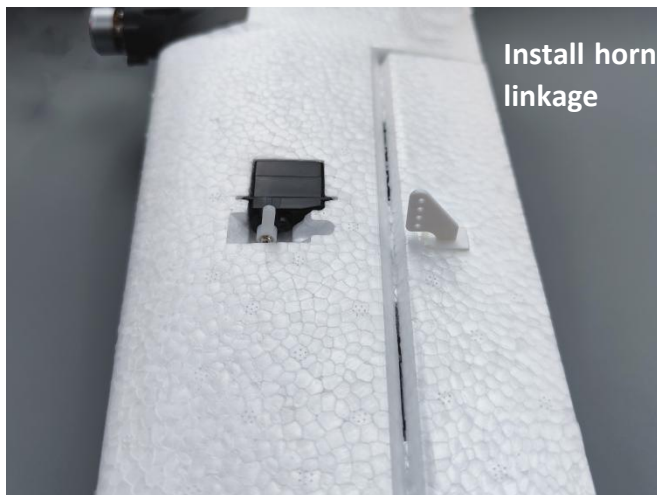
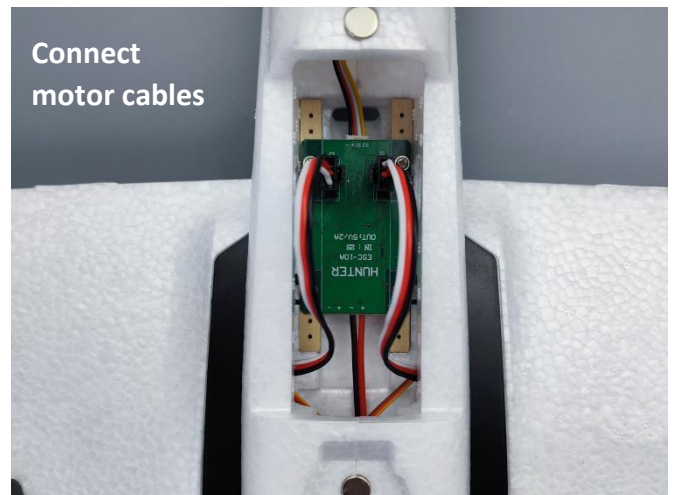
Install Horizontal Tail



Note: Ensure proper installation and repress during adhesion, press as needed to avoid improper adhesion.

H-1 Assembly

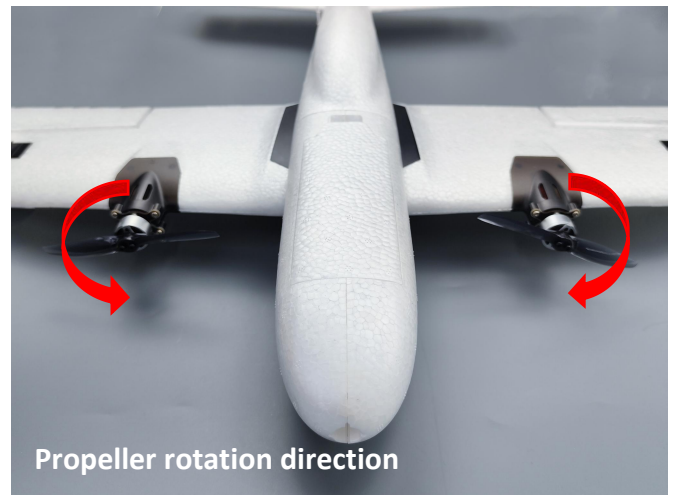
Install H-1



Note: When installing the horn linkage, power on the servo and set to the neutral position.

H-1 Assembly

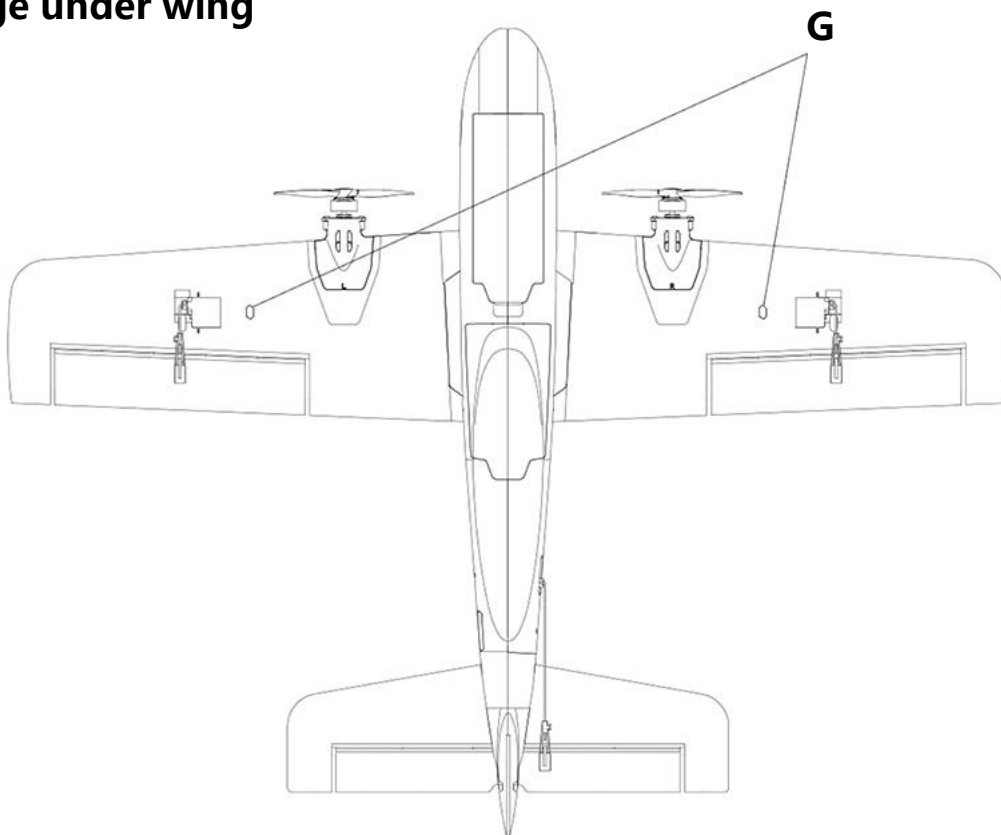
Install H-1



Note: Before installing the propeller, ensure the correct motor rotation direction.

The position of CG

The bulge under wing



Assembly Completed

