




NORTH AMERICAN

— STONE AND TILE —



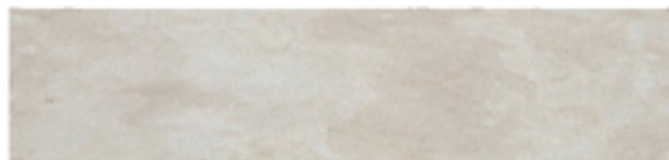
BEIGE COLLECTION

STANDARD COLOURS & FORMATS

Alsace Taupe



Atlas Beige



Sahral
Travertine



Luberon



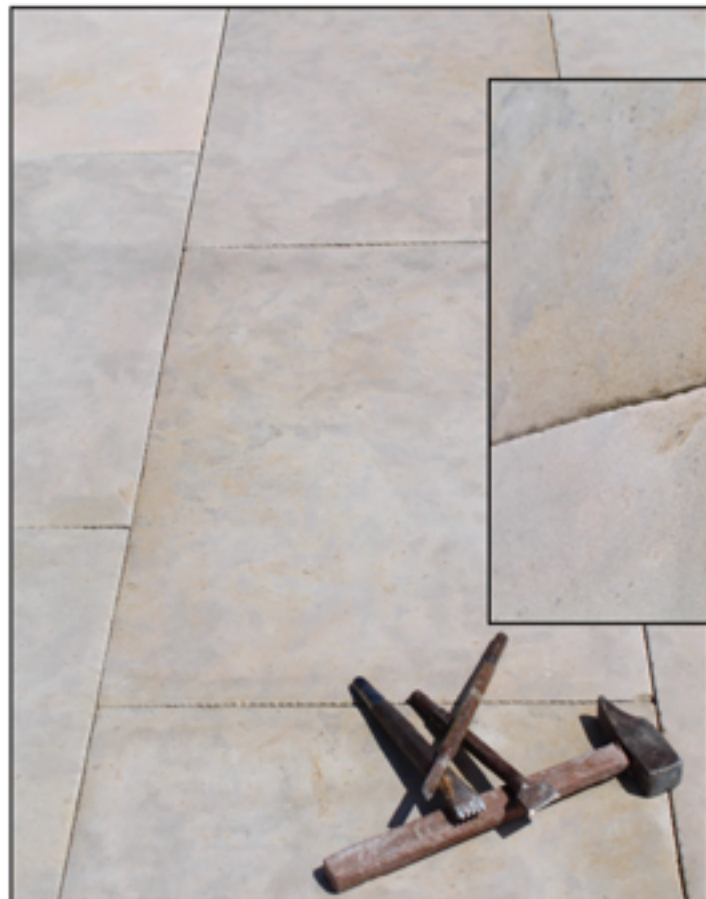
Arcachon Beige



Alsace Taupe Deauville

TRADITION COLLECTION


NORTH AMERICAN
STONE AND TILE



Standard Sizes	Thickness		
	5/8"	5/7"	5/4"
	15mm	18mm	30mm
16"x 24" / 406 x 610	●	●	●
16"x 32" / 406 x 812	●	●	●
24"x 24" / 610 x 610	●	●	●
24"x 36" / 610 x 915	●	●	●
24"x 48" / 610 x 1200	●	●	●
Roman Pattern	●	●	●
French Pattern	●	●	●
3 pcs Pattern	●	●	●
16" x FL / 406 x FL	●	●	●
20" x FL / 508 x FL	●	●	●
24" x FL / 610 x FL	●	●	●
Slabs			●
Custom Sizes	Cut-to-size and additional finishes are available. Contact our sales representative for details and pricing.		

Tolerances: In compliance with Stone Industry Standards, Vol. VIII
Calibrated: Available upon request
Free Thaw: No
Available Thickness: 5/8" up to 6" / 15mm up to 152mm
Average Slab Size: 100" → 115" x 55" → 60" / 2500 → 2900mm x 1400 → 1500mm
Architectural Elements: Stair Treads, Rebate, Wall Caps, Coping, Curbs, Corners and Sills
Natural stone is a product of nature, and no two pieces are exactly alike. Every piece of stone has natural variations, markings, shadings and inclusions which are not defects but rather inherent characteristics of stone product that are impossible to represent in one sample. We advise you to confirm current quarry conditions and characteristics of the stone at the time of ordering and/or specifying.

Alsace Taupe Manoir Ponce'

TRADITION COLLECTION


NORTH AMERICAN
STONE AND TILE



Standard Sizes	Thickness		
	5/8"	5/7"	5/16"
	15mm	18mm	30mm
16"x 24" / 406 x 610		●	●
16"x 32" / 406 x 812		●	●
24"x 24" / 610 x 610		●	●
24"x 36" / 610 x 915		●	●
24"x 48" / 610 x 1200			●
Roman Pattern		●	●
French Pattern		●	●
3 pcs Pattern		●	●
16" FL / 406 x FL		●	●
20" FL / 508 x FL		●	●
24" FL / 610 x FL		●	●
Slabs			●
Custom Sizes	Cut-to-size and additional finishes are available. Contact our sales representative for details and pricing.		

Tolerances: In compliance with Stone Industry Standards, Vol. VIII
Calibrated: Available upon request
Freeze Thaw: No
Available Thickness: 5/8" up to 6" / 15mm up to 152mm
Average Slab Size: 100" → 115" x 55" → 60" / 2500 → 2900mm x 1400 → 1500mm
Architectural Elements: Stair Treads, Rebate, Wall Caps, Coping, Curbs, Corners and Sills
Natural stone is a product of nature, and no two pieces are exactly alike. Every piece of stone has natural variations, markings, shadings and inclusions which are not defects but rather inherent characteristics of stone product that are impossible to represent in one sample. We advise you to confirm current quarry conditions and characteristics of the stone at the time of ordering and/or specifying.

Alsace Taupe Manoir Rustic

TRADITION COLLECTION



Standard Sizes	Thickness		
	5/8"	5/7"	5/4"
	15mm	18mm	30mm
16"x 24" / 406 x 610		●	●
16"x 32" / 406 x 812		●	●
24"x 24" / 610 x 610		●	●
24"x 36" / 610 x 915		●	●
24"x 48" / 610 x 1200			●
Roman Pattern		●	●
French Pattern		●	●
3 pcs Pattern		●	●
16"x FL / 406 x FL		●	●
20"x FL / 508 x FL		●	●
24"x FL / 610 x FL		●	●
Slabs			●
Custom Sizes	Cut-to-size and additional finishes are available. Contact our sales representative for details and pricing.		

Tolerances: In compliance with Stone Industry Standards, Vol. VIII
Calibrated: Available upon request
Freeze Thaw: No
Available Thickness: 5/8" up to 6" / 15mm up to 152mm
Average Slab Size: 100" → 115" x 55" → 60" / 2500 → 2900mm x 1400 → 1500mm
Architectural Elements: Stair Treads, Rebate, Wall Caps, Coping, Curbs, Corners and Sills
Natural stone is a product of nature, and no two pieces are exactly alike. Every piece of stone has natural variations, markings, shadings and inclusions which are not defects but rather inherent characteristics of stone product that are impossible to represent in one sample. We advise you to confirm current quarry conditions and characteristics of the stone at the time of ordering and/or specifying.

Alsace Taupe Versailles

TRADITION COLLECTION



Standard Sizes	Thickness		
	5/8"	5/7"	5/4"
	15mm	16mm	30mm
16" x 24" / 406 x 610	●	●	●
16" x 32" / 406 x 812	●	●	●
24" x 24" / 610 x 610	●	●	●
24" x 36" / 610 x 915	●	●	●
24" x 48" / 610 x 1200		●	●
Roman Pattern	●	●	●
French Pattern	●	●	●
3 pcs Pattern	●	●	●
16" x FL / 406 x FL	●	●	●
20" x FL / 508 x FL	●	●	●
24" x FL / 610 x FL	●	●	●
Slabs			●
Custom Sizes	Cut-to-size and additional finishes are available. Contact our sales representative for details and pricing.		

Tolerances:

In compliance with Stone Industry Standards, Vol. VIII

Calibrated:

Available upon request

Freeze Thaw:

No

Available Thickness:

5/8" up to 6" / 15mm up to 152mm

Average Slab Size:

100" → 115" x 55" → 60" / 2500 → 2900mm x 1400 → 1500mm

Architectural Elements:

Stair Treads, Rebate, Wall Caps, Coping, Curbs, Corners and Sills

Natural stone is a product of nature, and no two pieces are exactly alike. Every piece of stone has natural variations, markings, shadings and inclusions which are not defects but rather inherent characteristics of stone product that are impossible to represent in one sample. We advise you to confirm current quarry conditions and characteristics of the stone at the time of ordering and/or specifying.

Arcachon Beige Deauville

TRADITION COLLECTION



Standard Sizes	Thickness		
	5/8"	5/7"	5/16"
	15mm	18mm	30mm
16"x 24" / 406 x 610		•	•
16"x 32" / 406 x 812	•	•	•
24"x 24" / 610 x 610	•	•	•
24"x 36" / 610 x 915		•	•
24"x 48" / 610 x 1200			•
Roman Pattern		•	•
French Pattern		•	•
3 pcs Pattern		•	•
16" x FL / 406 x FL	•	•	•
20" x FL / 508 x FL	•	•	•
24" x FL / 610 x FL	•	•	•
Slabs			•
Custom Sizes	Cut-to-size and additional finishes are available. Contact our sales representative for details and pricing.		

Tolerances: In compliance with Stone Industry Standards, Vol. VII
Calibrated: Available upon request
Freeze Thaw: No
Available Thickness: 5/8" up to 6" / 15mm up to 152mm
Average Slab Size: 100" → 115" x 55" → 60" / 2500 → 2900mm x 1400 → 1500mm
Architectural Elements: Stair Treads, Rebate, Wall Caps, Coping, Curbs, Corners and Sills
Natural stone is a product of nature, and no two pieces are exactly alike. Every piece of stone has natural variations, markings, shadings and inclusions which are not defects but rather inherent characteristics of stone product that are impossible to represent in one sample. We advise you to confirm current quarry conditions and characteristics of the stone at the time of ordering and/or specifying.

Arcachon Versailles Brushed

TRADITION COLLECTION


NORTH AMERICAN
STONE AND TILE



Standard Sizes	Thickness		
	5/8"	5/7"	5/4"
	15mm	18mm	30mm
16"x 24" / 406 x 610		●	●
16"x 32" / 406 x 812		●	●
24"x 24" / 610 x 610		●	●
24"x 36" / 610 x 915		●	●
24"x 48" / 610 x 1200		●	●
Roman Pattern		●	●
French Pattern		●	●
3 pcs Pattern		●	●
16" FL / 406 x FL		●	●
20" FL / 508 x FL		●	●
24" FL / 610 x FL		●	●
Slabs			●
Custom Sizes	Cut-to-size and additional finishes are available. Contact our sales representative for details and pricing.		

Tolerances:

In compliance with Stone Industry Standards, Vol. VIII

Calibrated:

Available upon request

Freeze Thaw:

No

Available Thickness:

5/8" up to 6" / 15mm up to 152mm

Average Slab Size:

100" → 115" x 55" → 60" / 2500 → 2900mm x 1400 → 1500mm

Architectural Elements:

Stair Treads, Rebate, Wall Caps, Coping, Curbs, Corners and Sills

Natural stone is a product of nature, and no two pieces are exactly alike. Every piece of stone has natural variations, markings, shadings and inclusions which are not defects but rather inherent characteristics of stone product that are impossible to represent in one sample. We advise you to confirm current quarry conditions and characteristics of the stone at the time of ordering and/or specifying.

Arcachon Beige Old Heritage

TRADITION COLLECTION


NORTH AMERICAN
STONE AND TILE



Standard Sizes	Thickness		
	5/8"	5/7"	5/4"
	15mm	18mm	30mm
16"x 24" / 406 x 610		•	•
16"x 32" / 406 x 812		•	•
24"x 24" / 610 x 610		•	•
24"x 36" / 610 x 915		•	•
24"x 48" / 610 x 1200		•	•
Roman Pattern		•	•
French Pattern		•	•
3 pcs Pattern		•	•
16" x FL / 406 x FL		•	•
20" x FL / 508 x FL		•	•
24" x FL / 610 x FL		•	•
Slabs			•
Custom Sizes	Cut-to-size and additional finishes are available. Contact our sales representative for details and pricing.		

Tolerances:

In compliance with Stone Industry Standards, Vol. VIII

Calibrated:

Available upon request

Freeze Thaw:

No

Available Thickness:

5/8" up to 6" / 15mm up to 152mm

Average Slab Size:

100" → 115" x 55" → 60" / 2500 → 2900mm x 1400 → 1500mm

Architectural Elements:

Stair Treads, Rebate, Wall Caps, Coping, Curbs, Corners and Sills

Natural stone is a product of nature, and no two pieces are exactly alike. Every piece of stone has natural variations, markings, shadings and inclusions which are not defects but rather inherent characteristics of stone product that are impossible to represent in one sample. We advise you to confirm current quarry conditions and characteristics of the stone at the time of ordering and/or specifying.

Arcachon Beige Manoir

TRADITION COLLECTION


NORTH AMERICAN
STONE AND TILE



Standard Sizes	Thickness		
	5/8"	5/7"	5/16"
	15mm	18mm	30mm
16"x 24" / 406 x 610		●	●
16"x 32" / 406 x 812		●	●
24"x 24" / 610 x 610		●	●
24"x 36" / 610 x 915		●	●
24"x 48" / 610 x 1200		●	●
Roman Pattern		●	●
French Pattern		●	●
3 pcs Pattern		●	●
16" FL / 406 x FL		●	●
20" FL / 508 x FL		●	●
24" FL / 610 x FL		●	●
Slabs			●
Custom Sizes	Cut-to-size and additional finishes are available. Contact our sales representative for details and pricing.		

Tolerances: In compliance with Stone Industry Standards, Vol. VIII
Calibrated: Available upon request
Freeze Thaw: No
Available Thickness: 5/8" up to 6" / 15mm up to 152mm
Average Slab Size: 100" → 115" x 55" → 60" / 2500 → 2900mm x 1400 → 1500mm
Architectural Elements: Stair Treads, Rebate, Wall Caps, Coping, Curbs, Corners and Sills
Natural stone is a product of nature, and no two pieces are exactly alike. Every piece of stone has natural variations, markings, shadings and inclusions which are not defects but rather inherent characteristics of stone product that are impossible to represent in one sample. We advise you to confirm current quarry conditions and characteristics of the stone at the time of ordering and/or specifying.

Athena Fez

TRADITION COLLECTION


NORTH AMERICAN
STONE AND TILE



Standard Sizes	Thickness		
	5/8"	5/7"	5/4"
	15mm	18mm	30mm
16"x 24" / 406 x 610	●	●	●
16"x 32" / 406 x 812	●	●	●
24"x 24" / 610 x 610	●	●	●
24"x 36" / 610 x 915	●	●	●
24"x 48" / 610 x 1200		●	●
Roman Pattern	●	●	●
French Pattern	●	●	●
3 pcs Pattern	●	●	●
16"x FL / 406 x FL	●	●	●
20"x FL / 508 x FL	●	●	●
24"x FL / 610 x FL	●	●	●
Slabs			●
Custom Sizes	Cut-to-size and additional finishes are available. Contact our sales representative for details and pricing.		

Tolerances:	In compliance with Stone Industry Standards, Vol. VII
Calibrated:	Available upon request
Freeze Thaw:	No
Available Thickness:	5/8" up to 6" / 15mm up to 152mm
Average Slab Size:	100" → 115" x 55" → 60" / 2500 → 2900mm x 1400 → 1500mm
Architectural Elements:	Stair Treads, Rebate, Wall Caps, Coping, Curbs, Corners and Sills
<i>Natural stone is a product of nature, and no two pieces are exactly alike. Every piece of stone has natural variations, markings, shadings and inclusions which are not defects but rather inherent characteristics of stone product that are impossible to represent in one sample. We advise you to confirm current quarry conditions and characteristics of the stone at the time of ordering and/or specifying.</i>	

Atlas Beige Deauville

TRADITION COLLECTION


NORTH AMERICAN
STONE AND TILE



Standard Sizes	Thickness		
	5/8"	5/7"	5/16"
	15mm	18mm	30mm
16"x 24" / 406 x 610		•	•
16"x 32" / 406 x 812	•	•	•
24"x 24" / 610 x 610	•	•	•
24"x 36" / 610 x 915		•	•
24"x 48" / 610 x 1200			•
Roman Pattern		•	•
French Pattern		•	•
3 pcs Pattern		•	•
16" x FL / 406 x FL	•	•	•
20" x FL / 508 x FL	•	•	•
24" x FL / 610 x FL	•	•	•
Slabs			•
Custom Sizes	Cut-to-size and additional finishes are available. Contact our sales representative for details and pricing.		

Tolerances:

In compliance with Stone Industry Standards, Vol. VIII

Calibrated:

Available upon request

Freeze Thaw:

No

Available Thickness:

5/8" up to 6" / 15mm up to 152mm

Average Slab Size:

100" → 115" x 55" → 60" / 2500 → 2900mm x 1400 → 1500mm

Architectural Elements:

Stair Treads, Rebate, Wall Caps, Coping, Curbs, Corners and Sills

Natural stone is a product of nature, and no two pieces are exactly alike. Every piece of stone has natural variations, markings, shadings and inclusions which are not defects but rather inherent characteristics of stone product that are impossible to represent in one sample. We advise you to confirm current quarry conditions and characteristics of the stone at the time of ordering and/or specifying.

Atlas Beige Dalle de Provenance

TRADITION COLLECTION



Standard Sizes	Thickness		
	5/8"	5/7"	5/16"
	15mm	18mm	30mm
16"x 24" / 406 x 610		•	•
16"x 32" / 406 x 812	•	•	•
24"x 24" / 610 x 610	•	•	•
24"x 36" / 610 x 915		•	•
24"x 48" / 610 x 1200			•
Roman Pattern		•	•
French Pattern		•	•
3 pcs Pattern		•	•
16" x FL / 406 x FL	•	•	•
20" x FL / 508 x FL	•	•	•
24" x FL / 610 x FL	•	•	•
Slabs			•
Custom Sizes	Cut-to-size and additional finishes are available. Contact our sales representative for details and pricing.		

Tolerances:

In compliance with Stone Industry Standards, Vol. VII

Calibrated:

Available upon request

Freeze Thaw:

No

Available Thickness:

5/8" up to 6" / 15mm up to 152mm

Average Slab Size:

100" → 115" x 55" → 60" / 2500 → 2900mm x 1400 → 1500mm

Architectural Elements:

Stair Treads, Rebate, Wall Caps, Coping, Curbs, Corners and Sills

Natural stone is a product of nature, and no two pieces are exactly alike. Every piece of stone has natural variations, markings, shadings and inclusions which are not defects but rather inherent characteristics of stone product that are impossible to represent in one sample. We advise you to confirm current quarry conditions and characteristics of the stone at the time of ordering and/or specifying.

Atlas Beige Manoir Brossé

TRADITION COLLECTION

**NORTH AMERICAN**
STONE AND TILE



Standard Sizes	Thickness		
	5/8"	5/7"	5/4"
	15mm	18mm	30mm
16"x 24" / 406 x 609		•	•
16"x 32" / 406 x 810		•	•
24"x 24" / 610 x 610		•	•
24"x 36" / 610 x 910		•	•
24"x 48" / 610 x 1200			•
Roman Pattern		•	•
French Pattern		•	•
3 pcs Pattern		•	•
16" FL / 406 x FL		•	•
20" FL / 508 x FL		•	•
24" FL / 610 x FL		•	•
Slabs			•
Custom Sizes	Cut-to-size and additional finishes are available. Contact our sales representative for details and pricing.		

Tolerances: In compliance with Stone Industry Standards, Vol. VIII
Calibrated: Available upon request
Freeze Thaw: No
Available Thickness: 5/8" up to 6" / 15mm up to 152mm
Average Slab Size: 100" → 115" x 55" → 60" / 2500 → 2900mm x 1400 → 1500mm
Architectural Elements: Stair Treads, Rebate, Wall Caps, Coping, Curbs, Corners and Sills
Natural stone is a product of nature, and no two pieces are exactly alike. Every piece of stone has natural variations, markings, shadings and inclusions which are not defects but rather inherent characteristics of stone product that are impossible to represent in one sample. We advise you to confirm current quarry conditions and characteristics of the stone at the time of ordering and/or specifying.

Atlas Beige Manoir Rustic

TRADITION COLLECTION


NORTH AMERICAN
STONE AND TILE



Standard Sizes	Thickness		
	5/8"	5/7"	5/16"
	15mm	18mm	30mm
16" x 24" / 406 x 610		●	●
16" x 32" / 406 x 812		●	●
24" x 24" / 610 x 610		●	●
24" x 36" / 610 x 915			
24" x 48" / 610 x 1200			
Roman Pattern			●
French Pattern			●
3 pcs Pattern		●	●
16" x FL / 406 x FL		●	●
20" x FL / 508 x FL		●	●
24" x FL / 610 x FL		●	●
Slabs			●
Custom Sizes	Cut-to-size and additional finishes are available. Contact our sales representative for details and pricing.		

Tolerances: In compliance with Stone Industry Standards, Vol. VIII
Calibrated: Available upon request
Freeze Thaw: No
Available Thickness: 5/8" up to 6" / 15mm up to 152mm
Average Slab Size: 100" → 115" x 55" → 60" / 2500 → 2900mm x 1400 → 1500mm
Architectural Elements: Stair Treads, Rebate, Wall Caps, Coping, Curbs, Corners and Sills
Natural stone is a product of nature, and no two pieces are exactly alike. Every piece of stone has natural variations, markings, shadings and inclusions which are not defects but rather inherent characteristics of stone product that are impossible to represent in one sample. We advise you to confirm current quarry conditions and characteristics of the stone at the time of ordering and/or specifying.

Beige Mix Rustic

TRADITION COLLECTION


NORTH AMERICAN
STONE AND TILE



Standard Sizes	Thickness		
	5/8"	5/7"	5/4"
	15mm	18mm	30mm
16"x 24" / 406 x 610		•	•
16"x 32" / 406 x 812		•	•
24"x 24" / 610 x 610		•	•
24"x 36" / 610 x 915		•	•
24"x 48" / 610 x 1200		•	•
Roman Pattern		•	•
French Pattern		•	•
3 pcs Pattern		•	•
16" x FL / 406 x FL		•	•
20" x FL / 508 x FL		•	•
24" x FL / 610 x FL		•	•
Slabs			•
Custom Sizes	Cut-to-size and additional finishes are available. Contact our sales representative for details and pricing.		

Tolerances:

In compliance with Stone Industry Standards, Vol. VIII

Calibrated:

Available upon request

Freeze Thaw:

No

Available Thickness:

5/8" up to 6" / 15mm up to 152mm

Average Slab Size:

100" → 115" x 55" → 60" / 2500 → 2900mm x 1400 → 1500mm

Architectural Elements:

Stair Treads, Rebate, Wall Caps, Coping, Curbs, Corners and Sills

Natural stone is a product of nature, and no two pieces are exactly alike. Every piece of stone has natural variations, markings, shadings and inclusions which are not defects but rather inherent characteristics of stone product that are impossible to represent in one sample. We advise you to confirm current quarry conditions and characteristics of the stone at the time of ordering and/or specifying.

Atlas Beige Sandblasted

TRADITION COLLECTION



Standard Sizes	Thickness		
	5/8"	5/7"	5/4"
	15mm	18mm	30mm
16"x 24" / 406 x 610	●	●	●
16"x 32" / 406 x 812	●	●	●
24"x 24" / 610 x 610	●	●	●
24"x 36" / 610 x 915	●	●	●
24"x 48" / 610 x 1200		●	●
Roman Pattern	●	●	●
French Pattern	●	●	●
3 pcs Pattern	●	●	●
16"x FL / 406 x FL	●	●	●
20"x FL / 508 x FL	●	●	●
24"x FL / 610 x FL	●	●	●
Slabs			●
Custom Sizes	Cut-to-size and additional finishes are available. Contact our sales representative for details and pricing.		

Tolerances:

In compliance with Stone Industry Standards, Vol. VIII

Calibrated:

Available upon request

Freeze Thaw:

No

Available Thickness:

5/8" up to 6" / 15mm up to 152mm

Average Slab Size:

100" → 115" x 55" → 60" / 2500 → 2900mm x 1400 → 1500mm

Architectural Elements:

Stair Treads, Rebate, Wall Caps, Coping, Curbs, Corners and Sills

Natural stone is a product of nature, and no two pieces are exactly alike. Every piece of stone has natural variations, markings, shadings and inclusions which are not defects but rather inherent characteristics of stone product that are impossible to represent in one sample. We advise you to confirm current quarry conditions and characteristics of the stone at the time of ordering and/or specifying.

Alsace Taupe Manoir Rustic

TRADITION COLLECTION



Standard Sizes	Thickness		
	5/8"	5/7"	5/4"
	15mm	18mm	30mm
16"x 24" / 406 x 610	●	●	●
16"x 32" / 406 x 812	●	●	●
24"x 24" / 610 x 610	●	●	●
24"x 36" / 610 x 915	●	●	●
24"x 48" / 610 x 1200		●	●
Roman Pattern	●	●	●
French Pattern	●	●	●
3 pcs Pattern	●	●	●
16" x FL / 406 x FL	●	●	●
20" x FL / 508 x FL	●	●	●
24" x FL / 610 x FL	●	●	●
Slabs			●
Custom Sizes	Cut-to-size and additional finishes are available. Contact our sales representative for details and pricing.		

Tolerances:

In compliance with Stone Industry Standards, Vol. VIII

Calibrated:

Available upon request

Freeze Thaw:

No

Available Thickness:

5/8" up to 6" / 15mm up to 152mm

Average Slab Size:

100" → 115" x 55" → 60" / 2500 → 2900mm x 1400 → 1500mm

Architectural Elements:

Stair Treads, Rebate, Wall Caps, Coping, Curbs, Corners and Sills

Natural stone is a product of nature, and no two pieces are exactly alike. Every piece of stone has natural variations, markings, shadings and inclusions which are not defects but rather inherent characteristics of stone product that are impossible to represent in one sample. We advise you to confirm current quarry conditions and characteristics of the stone at the time of ordering and/or specifying.

Atlas Brun St. Gilles

TRADITION COLLECTION


NORTH AMERICAN
STONE AND TILE



Standard Sizes	Thickness		
	5/8"	5/7"	5/4"
	15mm	18mm	30mm
16"x 24" / 406 x 610	●	●	●
16"x 32" / 406 x 812	●	●	●
24"x 24" / 610 x 610	●	●	●
24"x 36" / 610 x 915	●	●	●
24"x 48" / 610 x 1200		●	●
Roman Pattern	●	●	●
French Pattern	●	●	●
3 pcs Pattern	●	●	●
16" x FL / 406 x FL	●	●	●
20" x FL / 508 x FL	●	●	●
24" x FL / 610 x FL	●	●	●
Slabs			●
Custom Sizes	Cut-to-size and additional finishes are available. Contact our sales representative for details and pricing.		

Tolerances: In compliance with Stone Industry Standards, Vol. VIII
Calibrated: Available upon request
Freeze Thaw: No
Available Thickness: 5/8" up to 6" / 15mm up to 152mm
Average Slab Size: 100" → 115" x 55" → 60" / 2500 → 2900mm x 1400 → 1500mm
Architectural Elements: Stair Treads, Rebate, Wall Caps, Coping, Curbs, Corners and Sills
Natural stone is a product of nature, and no two pieces are exactly alike. Every piece of stone has natural variations, markings, shadings and inclusions which are not defects but rather inherent characteristics of stone product that are impossible to represent in one sample. We advise you to confirm current quarry conditions and characteristics of the stone at the time of ordering and/or specifying.

Mix St. Emilion

TRADITION COLLECTION


NORTH AMERICAN
STONE AND TILE



Standard Sizes	Thickness		
	5/8"	5/7"	5/16"
	15mm	18mm	30mm
16"x 24" / 406 x 610	●	●	●
16"x 32" / 406 x 812	●	●	●
24"x 24" / 610 x 610	●	●	●
24"x 36" / 610 x 915	●	●	●
24"x 48" / 610 x 1200		●	●
Roman Pattern	●	●	●
French Pattern	●	●	●
3 pcs Pattern	●	●	●
16" x FL / 406 x FL	●	●	●
20" x FL / 508 x FL	●	●	●
24" x FL / 610 x FL	●	●	●
Slabs			●
Custom Sizes	Cut-to-size and additional finishes are available. Contact our sales representative for details and pricing.		

Tolerances:

In compliance with Stone Industry Standards, Vol. VIII

Calibrated:

Available upon request

Freeze Thaw:

No

Available Thickness:

5/8" up to 6" / 15mm up to 152mm

Average Slab Size:

100" → 115" x 55" → 60" / 2500 → 2900mm x 1400 → 1500mm

Architectural Elements:

Stair Treads, Rebate, Wall Caps, Coping, Curbs, Corners and Sills

Natural stone is a product of nature, and no two pieces are exactly alike. Every piece of stone has natural variations, markings, shadings and inclusions which are not defects but rather inherent characteristics of stone product that are impossible to represent in one sample. We advise you to confirm current quarry conditions and characteristics of the stone at the time of ordering and/or specifying.

Beige Mix Old Heritage

TRADITION COLLECTION


NORTH AMERICAN
STONE AND TILE



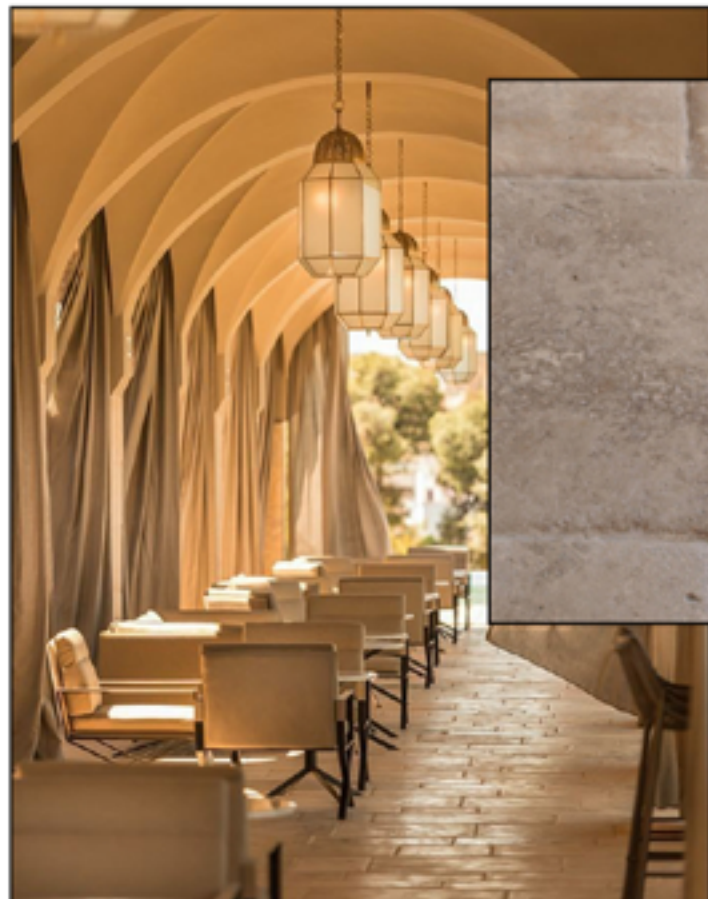
Standard Sizes	Thickness		
	5/8"	5/7"	5/4"
	15mm	18mm	30mm
16"x 24" / 406 x 610		•	•
16"x 32" / 406 x 812		•	•
24"x 24" / 610 x 610		•	•
24"x 36" / 610 x 915		•	•
24"x 48" / 610 x 1200		•	•
Roman Pattern		•	•
French Pattern		•	•
3 pcs Pattern		•	•
16" x FL / 406 x FL		•	•
20" x FL / 508 x FL		•	•
24" x FL / 610 x FL		•	•
Slabs			•
Custom Sizes	Cut-to-size and additional finishes are available. Contact our sales representative for details and pricing.		

Tolerances: In compliance with Stone Industry Standards, Vol. VII
Calibrated: Available upon request
Freeze Thaw: No
Available Thickness: 5/8" up to 6" / 15mm up to 152mm
Average Slab Size: 100" → 115" x 55" → 60" / 2500 → 2900mm x 1400 → 1500mm
Architectural Elements: Stair Treads, Rebate, Wall Caps, Coping, Curbs, Corners and Sills
Natural stone is a product of nature, and no two pieces are exactly alike. Every piece of stone has natural variations, markings, shadings and inclusions which are not defects but rather inherent characteristics of stone product that are impossible to represent in one sample. We advise you to confirm current quarry conditions and characteristics of the stone at the time of ordering and/or specifying.

Sahrai Travertine St. Emilion

TRADITION COLLECTION


NORTH AMERICAN
STONE AND TILE



Standard Sizes	Thickness		
	5/8"	5/7"	5/16"
	15mm	18mm	30mm
16"x 24" / 406 x 610		●	●
16"x 32" / 406 x 812		●	●
24"x 24" / 610 x 610		●	●
24"x 36" / 610 x 915		●	●
24"x 48" / 610 x 1200		●	●
Roman Pattern		●	●
French Pattern		●	●
3 pcs Pattern		●	●
16" x FL / 406 x FL		●	●
20" x FL / 508 x FL		●	●
24" x FL / 610 x FL		●	●
Slabs			●
Custom Sizes	Cut-to-size and additional finishes are available. Contact our sales representative for details and pricing.		

Tolerances:

In compliance with Stone Industry Standards, Vol. VIII

Calibrated:

Available upon request

Freeze Thaw:

No

Available Thickness:

5/8" up to 6" / 15mm up to 152mm

Average Slab Size:

100" → 115" x 55" → 60" / 2500 → 2900mm x 1400 → 1500mm

Architectural Elements:

Stair Treads, Rebate, Wall Caps, Coping, Curbs, Corners and Sills

Natural stone is a product of nature, and no two pieces are exactly alike. Every piece of stone has natural variations, markings, shadings and inclusions which are not defects but rather inherent characteristics of stone product that are impossible to represent in one sample. We advise you to confirm current quarry conditions and characteristics of the stone at the time of ordering and/or specifying.

Vieux Patrimoine Beige

TRADITION COLLECTION


NORTH AMERICAN
STONE AND TILE



Standard Sizes	Thickness		
	5/8"	5/7"	5/16"
	15mm	18mm	30mm
16"x 24" / 406 x 610		●	●
16"x 32" / 406 x 812		●	●
24"x 24" / 610 x 610		●	●
24"x 36" / 610 x 915		●	●
24"x 48" / 610 x 1200		●	●
Roman Pattern		●	●
French Pattern		●	●
3 pcs Pattern		●	●
16" x FL / 406 x FL		●	●
20" x FL / 508 x FL		●	●
24" x FL / 610 x FL		●	●
Slabs			●
Custom Sizes	Cut-to-size and additional finishes are available. Contact our sales representative for details and pricing.		

Tolerances: In compliance with Stone Industry Standards, Vol. VIII
Calibrated: Available upon request
Freeze Thaw: No
Available Thickness: 5/8" up to 6" / 15mm up to 152mm
Average Slab Size: 100" → 115" x 55" → 60" / 2500 → 2900mm x 1400 → 1500mm
Architectural Elements: Stair Treads, Rebate, Wall Caps, Coping, Curbs, Corners and Sills
Natural stone is a product of nature, and no two pieces are exactly alike. Every piece of stone has natural variations, markings, shadings and inclusions which are not defects but rather inherent characteristics of stone product that are impossible to represent in one sample. We advise you to confirm current quarry conditions and characteristics of the stone at the time of ordering and/or specifying.

Alsace Taupe St. Gilles

ANTIQUE COLLECTION


NORTH AMERICAN
STONE AND TILE



Standard Sizes	Thickness		
	5/8"	5/7"	5/4"
	15mm	18mm	30mm
16"x 24" / 406 x 610		•	•
16"x 32" / 406 x 812	•	•	•
24"x 24" / 610 x 610	•	•	•
24"x 36" / 610 x 915	•	•	•
24"x 48" / 610 x 1200			
Roman Pattern	•	•	•
French Pattern	•	•	•
3 pcs Pattern	•	•	•
16"x FL / 406 x FL	•	•	•
20"x FL / 508 x FL	•	•	•
24"x FL / 610 x FL	•	•	•
Slabs			•
Custom Sizes	Cut-to-size and additional finishes are available. Contact our sales representative for details and pricing.		

Tolerances:

In compliance with Stone Industry Standards, Vol. VIII

Calibrated:

Available upon request

Freeze Thaw:

No

Available Thickness:

5/8" up to 6" / 15mm up to 152mm

Average Slab Size:

100" → 115" x 55" → 60" / 2500 → 2900mm x 1400 → 1500mm

Architectural Elements:

Stair Treads, Rebate, Wall Caps, Coping, Curbs, Corners and Sills

Natural stone is a product of nature, and no two pieces are exactly alike. Every piece of stone has natural variations, markings, shadings and inclusions which are not defects but rather inherent characteristics of stone product that are impossible to represent in one sample. We advise you to confirm current quarry conditions and characteristics of the stone at the time of ordering and/or specifying.

Atlas Beige Antiquaire

ANTIQUAIRE COLLECTION



Standard Sizes	Thickness		
	5/8"	5/7"	5/4"
	15mm	18mm	30mm
16"x 24" / 406 x 610	●	●	●
16"x 32" / 406 x 812	●	●	●
24"x 24" / 610 x 610	●	●	●
24"x 36" / 610 x 915	●	●	●
24"x 48" / 610 x 1200		●	●
Roman Pattern	●	●	●
French Pattern	●	●	●
3 pcs Pattern	●	●	●
16" x FL / 406 x FL	●	●	●
20" x FL / 508 x FL	●	●	●
24" x FL / 610 x FL	●	●	●
Slabs			●
Custom Sizes	Cut-to-size and additional finishes are available. Contact our sales representative for details and pricing.		

Tolerances:

In compliance with Stone Industry Standards, Vol. VIII

Calibrated:

Available upon request

Freeze Thaw:

No

Available Thickness:

5/8" up to 6" / 15mm up to 152mm

Average Slab Size:

100" → 115" x 55" → 60" / 2500 → 2900mm x 1400 → 1500mm

Architectural Elements:

Stair Treads, Rebate, Wall Caps, Coping, Curbs, Corners and Sills

Natural stone is a product of nature, and no two pieces are exactly alike. Every piece of stone has natural variations, markings, shadings and inclusions which are not defects but rather inherent characteristics of stone product that are impossible to represent in one sample. We advise you to confirm current quarry conditions and characteristics of the stone at the time of ordering and/or specifying.

Atlas Beige Gordes

ANTIQUE COLLECTION

**NORTH AMERICAN**
STONE AND TILE



Standard Sizes	Thickness		
	5/8"	5/7"	5/4"
	15mm	18mm	30mm
16"x 24" / 406 x 610	●	●	●
16"x 32" / 406 x 812	●	●	●
24"x 24" / 610 x 610	●	●	●
24"x 36" / 610 x 915	●	●	●
24"x 48" / 610 x 1200		●	●
Roman Pattern	●	●	●
French Pattern	●	●	●
3 pcs Pattern	●	●	●
16" x FL / 406 x FL	●	●	●
20" x FL / 508 x FL	●	●	●
24" x FL / 610 x FL	●	●	●
Slabs			●
Custom Sizes	Cut-to-size and additional finishes are available. Contact our sales representative for details and pricing.		

Tolerances:

In compliance with Stone Industry Standards, Vol. VIII

Calibrated:

Available upon request

Freeze Thaw:

No

Available Thickness:

5/8" up to 6" / 15mm up to 152mm

Average Slab Size:

100" → 115" x 55" → 60" / 2500 → 2900mm x 1400 → 1500mm

Architectural Elements:

Stair Treads, Rebate, Wall Caps, Coping, Curbs, Corners and Sills

Natural stone is a product of nature, and no two pieces are exactly alike. Every piece of stone has natural variations, markings, shadings and inclusions which are not defects but rather inherent characteristics of stone product that are impossible to represent in one sample. We advise you to confirm current quarry conditions and characteristics of the stone at the time of ordering and/or specifying.

Atlas Beige Samdy Finish

ANTIQUE COLLECTION


NORTH AMERICAN
STONE AND TILE



Standard Sizes	Thickness		
	5/8"	5/7"	5/4"
	15mm	18mm	30mm
16"x 24" / 406 x 610	●	●	●
16"x 32" / 406 x 812	●	●	●
24"x 24" / 610 x 610	●	●	●
24"x 36" / 610 x 915	●	●	●
24"x 48" / 610 x 1200		●	●
Roman Pattern	●	●	●
French Pattern	●	●	●
3 pcs Pattern	●	●	●
16" FL / 406 x FL	●	●	●
20" FL / 508 x FL	●	●	●
24" FL / 610 x FL	●	●	●
Slabs			●
Custom Sizes	Cut-to-size and additional finishes are available. Contact our sales representative for details and pricing.		

Tolerances: In compliance with Stone Industry Standards, Vol. VIII
Calibrated: Available upon request
Freeze Thaw: No
Available Thickness: 5/8" up to 6" / 15mm up to 152mm
Average Slab Size: 100" → 115" x 55" → 60" / 2500 → 2900mm x 1400 → 1500mm
Architectural Elements: Stair Treads, Rebate, Wall Caps, Coping, Curbs, Corners and Sills
Natural stone is a product of nature, and no two pieces are exactly alike. Every piece of stone has natural variations, markings, shadings and inclusions which are not defects but rather inherent characteristics of stone product that are impossible to represent in one sample. We advise you to confirm current quarry conditions and characteristics of the stone at the time of ordering and/or specifying.

Atlas Beige St. Julien

ANTIQUE COLLECTION


NORTH AMERICAN
STONE AND TILE



Standard Sizes	Thickness		
	5/8"	5/7"	5/4"
	15mm	18mm	30mm
16"x 24" / 406 x 610	●	●	●
16"x 32" / 406 x 812	●	●	●
24"x 24" / 610 x 610	●	●	●
24"x 36" / 610 x 915	●	●	●
24"x 48" / 610 x 1200		●	●
Roman Pattern	●	●	●
French Pattern	●	●	●
3 pcs Pattern	●	●	●
16" x FL / 406 x FL	●	●	●
20" x FL / 508 x FL	●	●	●
24" x FL / 610 x FL	●	●	●
Slabs			●
Custom Sizes	Cut-to-size and additional finishes are available. Contact our sales representative for details and pricing.		

Tolerances: In compliance with Stone Industry Standards, Vol. VIII
Calibrated: Available upon request
Freeze Thaw: No
Available Thickness: 5/8" up to 6" / 15mm up to 152mm
Average Slab Size: 100" → 115" x 55" → 60" / 2500 → 2900mm x 1400 → 1500mm
Architectural Elements: Stair Treads, Rebate, Wall Caps, Coping, Curbs, Corners and Sills
Natural stone is a product of nature, and no two pieces are exactly alike. Every piece of stone has natural variations, markings, shadings and inclusions which are not defects but rather inherent characteristics of stone product that are impossible to represent in one sample. We advise you to confirm current quarry conditions and characteristics of the stone at the time of ordering and/or specifying.

Atlas Beige Sand Blasted

ANTIQUE COLLECTION


NORTH AMERICAN
STONE AND TILE



Standard Sizes	Thickness		
	5/8"	5/7"	5/16"
	15mm	18mm	30mm
16"x 24" / 406 x 610	●	●	●
16"x 32" / 406 x 812	●	●	●
24"x 24" / 610 x 610	●	●	●
24"x 36" / 610 x 915	●	●	●
24"x 48" / 610 x 1200		●	●
Roman Pattern	●	●	●
French Pattern	●	●	●
3 pcs Pattern	●	●	●
16" x FL / 406 x FL	●	●	●
20" x FL / 508 x FL	●	●	●
24" x FL / 610 x FL	●	●	●
Slabs			●
Custom Sizes	Cut-to-size and additional finishes are available. Contact our sales representative for details and pricing.		

Tolerances:

In compliance with Stone Industry Standards, Vol. VIII

Calibrated:

Available upon request

Freeze Thaw:

No

Available Thickness:

5/8" up to 6" / 15mm up to 152mm

Average Slab Size:

100" → 115" x 55" → 60" / 2500 → 2900mm x 1400 → 1500mm

Architectural Elements:

Stair Treads, Rebate, Wall Caps, Coping, Curbs, Corners and Sills

Natural stone is a product of nature, and no two pieces are exactly alike. Every piece of stone has natural variations, markings, shadings and inclusions which are not defects but rather inherent characteristics of stone product that are impossible to represent in one sample. We advise you to confirm current quarry conditions and characteristics of the stone at the time of ordering and/or specifying.

Atlas Beige St. Raphael

ANTIQUE COLLECTION


NORTH AMERICAN
STONE AND TILE



Standard Sizes	Thickness		
	5/8"	5/7"	5/4"
	15mm	18mm	30mm
16"x 24" / 406 x 610	●	●	●
16"x 32" / 406 x 812	●	●	●
24"x 24" / 610 x 610	●	●	●
24"x 36" / 610 x 915	●	●	●
24"x 48" / 610 x 1200			
Roman Pattern	●	●	●
French Pattern	●	●	●
3 pcs Pattern	●	●	●
16"x FL / 406 x FL	●	●	●
20"x FL / 508 x FL	●	●	●
24"x FL / 610 x FL	●	●	●
Slabs			●
Custom Sizes	Cut-to-size and additional finishes are available. Contact our sales representative for details and pricing.		

Tolerances: In compliance with Stone Industry Standards, Vol. VIII
Calibrated: Available upon request
Freeze Thaw: No
Available Thickness: 5/8" up to 6" / 15mm up to 152mm
Average Slab Size: 100" → 115" x 55" → 60" / 2500 → 2900mm x 1400 → 1500mm
Architectural Elements: Stair Treads, Rebate, Wall Caps, Coping, Curbs, Corners and Sills
Natural stone is a product of nature, and no two pieces are exactly alike. Every piece of stone has natural variations, markings, shadings and inclusions which are not defects but rather inherent characteristics of stone product that are impossible to represent in one sample. We advise you to confirm current quarry conditions and characteristics of the stone at the time of ordering and/or specifying.

Atlas Beige Tumbled

ANTIQUE COLLECTION


NORTH AMERICAN
STONE AND TILE



Standard Sizes	Thickness		
	5/8"	5/7"	5/16"
	15mm	18mm	30mm
16"x 24" / 406 x 610	●	●	●
16"x 32" / 406 x 812	●	●	●
24"x 24" / 610 x 610	●	●	●
24"x 36" / 610 x 915	●	●	●
24"x 48" / 610 x 1200			
Roman Pattern	●	●	●
French Pattern	●	●	●
3 pcs Pattern	●	●	●
16" x FL / 406 x FL	●	●	●
20" x FL / 508 x FL	●	●	●
24" x FL / 610 x FL	●	●	●
Slabs			●
Custom Sizes	Cut-to-size and additional finishes are available. Contact our sales representative for details and pricing.		

Tolerances:

In compliance with Stone Industry Standards, Vol. VIII

Calibrated:

Available upon request

Freeze Thaw:

No

Available Thickness:

5/8" up to 6" / 15mm up to 152mm

Average Slab Size:

100" → 115" x 55" → 60" / 2500 → 2900mm x 1400 → 1500mm

Architectural Elements:

Stair Treads, Rebate, Wall Caps, Coping, Curbs, Corners and Sills

Natural stone is a product of nature, and no two pieces are exactly alike. Every piece of stone has natural variations, markings, shadings and inclusions which are not defects but rather inherent characteristics of stone product that are impossible to represent in one sample. We advise you to confirm current quarry conditions and characteristics of the stone at the time of ordering and/or specifying.

Antiquaire Brushed Beige Mix

ANTIQUA COLLECTION


NORTH AMERICAN
STONE AND TILE



Standard Sizes	Thickness		
	5/8"	5/7"	5/16"
	15mm	18mm	30mm
16"x 24" / 406 x 610	•	•	•
16"x 32" / 406 x 812	•	•	•
24"x 24" / 610 x 610	•	•	•
24"x 36" / 610 x 915	•	•	•
24"x 48" / 610 x 1200		•	•
Roman Pattern	•	•	•
French Pattern	•	•	•
3 pcs Pattern	•	•	•
16" FL / 406 x FL	•	•	•
20" FL / 508 x FL	•	•	•
24" FL / 610 x FL	•	•	•
Slabs			•
Custom Sizes	Cut-to-size and additional finishes are available. Contact our sales representative for details and pricing.		

Tolerances: In compliance with Stone Industry Standards, Vol. VIII
Calibrated: Available upon request
Freeze Thaw: No
Available Thickness: 5/8" up to 6" / 15mm up to 152mm
Average Slab Size: 100" → 115" x 55" → 60" / 2500 → 2900mm x 1400 → 1500mm
Architectural Elements: Stair Treads, Rebate, Wall Caps, Coping, Curbs, Corners and Sills
Natural stone is a product of nature, and no two pieces are exactly alike. Every piece of stone has natural variations, markings, shadings and inclusions which are not defects but rather inherent characteristics of stone product that are impossible to represent in one sample. We advise you to confirm current quarry conditions and characteristics of the stone at the time of ordering and/or specifying.

Beige Mix Old Cottage

ANTIQUE COLLECTION


NORTH AMERICAN
STONE AND TILE



Standard Sizes	Thickness		
	5/8"	5/7"	5/4"
	15mm	18mm	30mm
16"x 24" / 406 x 610		•	•
16"x 32" / 406 x 812		•	•
24"x 24" / 610 x 610		•	•
24"x 36" / 610 x 915		•	•
24"x 48" / 610 x 1200		•	•
Roman Pattern	•	•	•
French Pattern	•	•	•
3 pcs Pattern	•	•	•
16" x FL / 406 x FL	•	•	•
20" x FL / 508 x FL	•	•	•
24" x FL / 610 x FL	•	•	•
Slabs			•
Custom Sizes	Cut-to-size and additional finishes are available. Contact our sales representative for details and pricing.		

Tolerances: In compliance with Stone Industry Standards, Vol. VIII
Calibrated: Available upon request
Freeze Thaw: No
Available Thickness: 5/8" up to 6" / 15mm up to 152mm
Average Slab Size: 100" → 115" x 55" → 60" / 2500 → 2900mm x 1400 → 1500mm
Architectural Elements: Stair Treads, Rebate, Wall Caps, Coping, Curbs, Corners and Sills
Natural stone is a product of nature, and no two pieces are exactly alike. Every piece of stone has natural variations, markings, shadings and inclusions which are not defects but rather inherent characteristics of stone product that are impossible to represent in one sample. We advise you to confirm current quarry conditions and characteristics of the stone at the time of ordering and/or specifying.

Meknes

ANTIQUE COLLECTION


NORTH AMERICAN
STONE AND TILE



Standard Sizes	Thickness		
	5/8"	5/7"	5/4"
	15mm	18mm	30mm
16"x 24" / 406 x 610	•	•	•
16"x 32" / 406 x 812	•	•	•
24"x 24" / 610 x 610	•	•	•
24"x 36" / 610 x 915	•	•	•
24"x 48" / 610 x 1200			
Roman Pattern	•	•	•
French Pattern	•	•	•
3 pcs Pattern	•	•	•
16" x FL / 406 x FL	•	•	•
20" x FL / 508 x FL	•	•	•
24" x FL / 610 x FL	•	•	•
Slabs			•
Custom Sizes	Cut-to-size and additional finishes are available. Contact our sales representative for details and pricing.		

Tolerances: In compliance with Stone Industry Standards, Vol. VII
Calibrated: Available upon request
Freeze Thaw: No
Available Thickness: 5/8" up to 6" / 15mm up to 152mm
Average Slab Size: 100" → 115" x 55" → 60" / 2500 → 2900mm x 1400 → 1500mm
Architectural Elements: Stair Treads, Rebate, Wall Caps, Coping, Curbs, Corners and Sills
Natural stone is a product of nature, and no two pieces are exactly alike. Every piece of stone has natural variations, markings, shadings and inclusions which are not defects but rather inherent characteristics of stone product that are impossible to represent in one sample. We advise you to confirm current quarry conditions and characteristics of the stone at the time of ordering and/or specifying.

St Remi Beige

ANTIQUE COLLECTION


NORTH AMERICAN
STONE AND TILE



Standard Sizes	Thickness		
	5/8"	5/7"	5/4"
	15mm	18mm	30mm
16" x 24" / 406 x 610	●	●	●
16" x 32" / 406 x 812	●	●	●
24" x 24" / 610 x 610	●	●	●
24" x 36" / 610 x 915	●	●	●
24" x 48" / 610 x 1200			
Roman Pattern	●	●	●
French Pattern	●	●	●
3 pcs Pattern	●	●	●
16" x FL / 406 x FL	●	●	●
20" x FL / 508 x FL	●	●	●
24" x FL / 610 x FL	●	●	●
Slabs			●
Custom Sizes	Cut-to-size and additional finishes are available. Contact our sales representative for details and pricing.		

Tolerances: In compliance with Stone Industry Standards, Vol. VII
Calibrated: Available upon request
Freeze Thaw: No
Available Thickness: 5/8" up to 6" / 15mm up to 152mm
Average Slab Size: 100" → 115" x 55" → 60" / 2500 → 2900mm x 1400 → 1500mm
Architectural Elements: Stair Treads, Rebate, Wall Caps, Coping, Curbs, Corners and Sills
Natural stone is a product of nature, and no two pieces are exactly alike. Every piece of stone has natural variations, markings, shadings and inclusions which are not defects but rather inherent characteristics of stone product that are impossible to represent in one sample. We advise you to confirm current quarry conditions and characteristics of the stone at the time of ordering and/or specifying.

Sahrai Travertine Tumbled

ANTIQUE COLLECTION



Standard Sizes	Thickness		
	5/8"	5/7"	5/16"
	15mm	18mm	30mm
16"x 24" / 406 x 610	●	●	●
16"x 32" / 406 x 812	●	●	●
24"x 24" / 610 x 610	●	●	●
24"x 36" / 610 x 915	●	●	●
24"x 48" / 610 x 1200		●	●
Roman Pattern	●	●	●
French Pattern	●	●	●
3 pcs Pattern	●	●	●
16"x FL / 406 x FL	●	●	●
20"x FL / 508 x FL	●	●	●
24"x FL / 610 x FL	●	●	●
Slabs			●
Custom Sizes	Cut-to-size and additional finishes are available. Contact our sales representative for details and pricing.		

Tolerances: In compliance with Stone Industry Standards, Vol. VIII
Calibrated: Available upon request
Freeze Thaw: No
Available Thickness: 5/8" up to 6" / 15mm up to 152mm
Average Slab Size: 100" → 115" x 55" → 60" / 2500 → 2900mm x 1400 → 1500mm
Architectural Elements: Stair Treads, Rebate, Wall Caps, Coping, Curbs, Corners and Sills
Natural stone is a product of nature, and no two pieces are exactly alike. Every piece of stone has natural variations, markings, shadings and inclusions which are not defects but rather inherent characteristics of stone product that are impossible to represent in one sample. We advise you to confirm current quarry conditions and characteristics of the stone at the time of ordering and/or specifying.

Arcachon Beige Brosse'

CONTEMPORARY COLLECTION


NORTH AMERICAN
STONE AND TILE



Standard Sizes	Thickness		
	5/8"	5/7"	5/16"
	15mm	18mm	30mm
16"x 24" / 406 x 610		•	•
16"x 32" / 406 x 812	•	•	•
24"x 24" / 610 x 610	•	•	•
24"x 36" / 610 x 915		•	•
24"x 48" / 610 x 1200			•
Roman Pattern		•	•
French Pattern		•	•
3 pcs Pattern		•	•
16" x FL / 406 x FL	•	•	•
20" x FL / 508 x FL	•	•	•
24" x FL / 610 x FL	•	•	•
Slabs			•
Custom Sizes	Cut-to-size and additional finishes are available. Contact our sales representative for details and pricing.		

Tolerances:

In compliance with Stone Industry Standards, Vol. VIII

Calibrated:

Available upon request

Freeze Thaw:

No

Available Thickness:

5/8" up to 6" / 15mm up to 152mm

Average Slab Size:

100" → 115" x 55" → 60" / 2500 → 2900mm x 1400 → 1500mm

Architectural Elements:

Stair Treads, Rebate, Wall Caps, Coping, Curbs, Corners and Sills

Natural stone is a product of nature, and no two pieces are exactly alike. Every piece of stone has natural variations, markings, shadings and inclusions which are not defects but rather inherent characteristics of stone product that are impossible to represent in one sample. We advise you to confirm current quarry conditions and characteristics of the stone at the time of ordering and/or specifying.

Arcachon Beige Brushed Light

CONTEMPORARY COLLECTION



**NORTH AMERICAN**
STONE AND TILE

Standard Sizes	Thickness		
	5/8"	5/7"	5/16"
	15mm	18mm	30mm
16"x 24" / 406 x 610		•	•
16"x 32" / 406 x 812	•	•	•
24"x 24" / 610 x 610	•	•	•
24"x 36" / 610 x 915		•	•
24"x 48" / 610 x 1200			•
Roman Pattern		•	•
French Pattern		•	•
3 pcs Pattern		•	•
16" x FL / 406 x FL	•	•	•
20" x FL / 508 x FL	•	•	•
24" x FL / 610 x FL	•	•	•
Slabs			•
Custom Sizes	Cut-to-size and additional finishes are available. Contact our sales representative for details and pricing.		

Tolerances:

In compliance with Stone Industry Standards, Vol. VII

Calibrated:

Available upon request

Freeze Thaw:

No

Available Thickness:

5/8" up to 6" / 15mm up to 152mm

Average Slab Size:

100" → 115" x 55" → 60" / 2500 → 2900mm x 1400 → 1500mm

Architectural Elements:

Stair Treads, Rebate, Wall Caps, Coping, Curbs, Corners and Sills

Natural stone is a product of nature, and no two pieces are exactly alike. Every piece of stone has natural variations, markings, shadings and inclusions which are not defects but rather inherent characteristics of stone product that are impossible to represent in one sample. We advise you to confirm current quarry conditions and characteristics of the stone at the time of ordering and/or specifying.

Arcachon Beige SBB

CONTEMPORARY COLLECTION


NORTH AMERICAN
STONE AND TILE



Standard Sizes	Thickness		
	5/8"	5/7"	5/4"
	15mm	18mm	30mm
16"x 24" / 406 x 610		•	•
16"x 32" / 406 x 812	•	•	•
24"x 24" / 610 x 610	•	•	•
24"x 36" / 610 x 915		•	•
24"x 48" / 610 x 1200			•
Roman Pattern		•	•
French Pattern		•	•
3 pcs Pattern		•	•
16" x FL / 406 x FL	•	•	•
20" x FL / 508 x FL	•	•	•
24" x FL / 610 x FL	•	•	•
Slabs			•
Custom Sizes	Cut-to-size and additional finishes are available. Contact our sales representative for details and pricing.		

Tolerances:

In compliance with Stone Industry Standards, Vol. VIII

Calibrated:

Available upon request

Freeze Thaw:

No

Available Thickness:

5/8" up to 6" / 15mm up to 152mm

Average Slab Size:

100" → 115" x 55" → 60" / 2500 → 2900mm x 1400 → 1500mm

Architectural Elements:

Stair Treads, Rebate, Wall Caps, Coping, Curbs, Corners and Sills

Natural stone is a product of nature, and no two pieces are exactly alike. Every piece of stone has natural variations, markings, shadings and inclusions which are not defects but rather inherent characteristics of stone product that are impossible to represent in one sample. We advise you to confirm current quarry conditions and characteristics of the stone at the time of ordering and/or specifying.

Arcachon Beige Var

CONTEMPORARY COLLECTION


NORTH AMERICAN
STONE AND TILE



Standard Sizes	Thickness		
	5/8"	5/7"	5/4"
	15mm	18mm	30mm
16"x 24" / 406 x 610		•	•
16"x 32" / 406 x 812	•	•	•
24"x 24" / 610 x 610	•	•	•
24"x 36" / 610 x 915		•	•
24"x 48" / 610 x 1200			•
Roman Pattern		•	•
French Pattern		•	•
3 pcs Pattern		•	•
16"x FL / 406 x FL	•	•	•
20"x FL / 508 x FL	•	•	•
24"x FL / 610 x FL	•	•	•
Slabs			•
Custom Sizes	Cut-to-size and additional finishes are available. Contact our sales representative for details and pricing.		

Tolerances:

In compliance with Stone Industry Standards, Vol. VIII

Calibrated:

Available upon request

Freeze Thaw:

No

Available Thickness:

5/8" up to 6" / 15mm up to 152mm

Average Slab Size:

100" → 115" x 55" → 60" / 2500 → 2900mm x 1400 → 1500mm

Architectural Elements:

Stair Treads, Rebate, Wall Caps, Coping, Curbs, Corners and Sills

Natural stone is a product of nature, and no two pieces are exactly alike. Every piece of stone has natural variations, markings, shadings and inclusions which are not defects but rather inherent characteristics of stone product that are impossible to represent in one sample. We advise you to confirm current quarry conditions and characteristics of the stone at the time of ordering and/or specifying.

Atlas Beige Brushed Light

CONTEMPORARY COLLECTION


NORTH AMERICAN
STONE AND TILE



Standard Sizes	Thickness		
	5/8"	5/7"	5/4"
	15mm	18mm	30mm
16"x 24" / 406 x 610	●	●	●
16"x 32" / 406 x 812	●	●	●
24"x 24" / 610 x 610	●	●	●
24"x 36" / 610 x 915	●	●	●
24"x 48" / 610 x 1200		●	●
Roman Pattern	●	●	●
French Pattern	●	●	●
3 pcs Pattern	●	●	●
16"x FL / 406 x FL	●	●	●
20"x FL / 508 x FL	●	●	●
24"x FL / 610 x FL	●	●	●
Slabs			●
Custom Sizes	Cut-to-size and additional finishes are available. Contact our sales representative for details and pricing.		

Tolerances:

In compliance with Stone Industry Standards, Vol. VIII

Calibrated:

Available upon request

Freeze Thaw:

No

Available Thickness:

5/8" up to 6" / 15mm up to 152mm

Average Slab Size:

100" → 115" x 55" → 60" / 2500 → 2900mm x 1400 → 1500mm

Architectural Elements:

Stair Treads, Rebate, Wall Caps, Coping, Curbs, Corners and Sills

Natural stone is a product of nature, and no two pieces are exactly alike. Every piece of stone has natural variations, markings, shadings and inclusions which are not defects but rather inherent characteristics of stone product that are impossible to represent in one sample. We advise you to confirm current quarry conditions and characteristics of the stone at the time of ordering and/or specifying.

Atlas Beige Paris Casa

CONTEMPORARY COLLECTION



Standard Sizes	Thickness		
	5/8"	5/7"	5/16"
	15mm	18mm	30mm
16"x 24" / 406 x 610	●	●	●
16"x 32" / 406 x 812	●	●	●
24"x 24" / 610 x 610	●	●	●
24"x 36" / 610 x 915	●	●	●
24"x 48" / 610 x 1200		●	●
Roman Pattern	●	●	●
French Pattern	●	●	●
3 pcs Pattern	●	●	●
16"x FL / 406 x FL	●	●	●
20"x FL / 508 x FL	●	●	●
24"x FL / 610 x FL	●	●	●
Slabs			●
Custom Sizes	Cut-to-size and additional finishes are available. Contact our sales representative for details and pricing.		

Tolerances:

In compliance with Stone Industry Standards, Vol. VIII

Calibrated:

Available upon request

Freeze Thaw:

No

Available Thickness:

5/8" up to 6" / 15mm up to 152mm

Average Slab Size:

100" → 115" x 55" → 60" / 2500 → 2900mm x 1400 → 1500mm

Architectural Elements:

Stair Treads, Rebate, Wall Caps, Coping, Curbs, Corners and Sills

Natural stone is a product of nature, and no two pieces are exactly alike. Every piece of stone has natural variations, markings, shadings and inclusions which are not defects but rather inherent characteristics of stone product that are impossible to represent in one sample. We advise you to confirm current quarry conditions and characteristics of the stone at the time of ordering and/or specifying.

Atlas Beige Silk

CONTEMPORARY COLLECTION


NORTH AMERICAN
STONE AND TILE



Standard Sizes	Thickness		
	5/8"	5/7"	5/4"
	15mm	18mm	30mm
16"x 24" / 406 x 610		•	•
16"x 32" / 406 x 812	•	•	•
24"x 24" / 610 x 610	•	•	•
24"x 36" / 610 x 915		•	•
24"x 48" / 610 x 1200			•
Roman Pattern		•	•
French Pattern		•	•
3 pcs Pattern		•	•
16"x FL / 406 x FL	•	•	•
20"x FL / 508 x FL	•	•	•
24"x FL / 610 x FL	•	•	•
Slabs			•
Custom Sizes	Cut-to-size and additional finishes are available. Contact our sales representative for details and pricing.		

Tolerances:

In compliance with Stone Industry Standards, Vol. VIII

Calibrated:

Available upon request

Freeze Thaw:

No

Available Thickness:

5/8" up to 6" / 15mm up to 152mm

Average Slab Size:

100" → 115" x 55" → 60" / 2500 → 2900mm x 1400 → 1500mm

Architectural Elements:

Stair Treads, Rebate, Wall Caps, Coping, Curbs, Corners and Sills

Natural stone is a product of nature, and no two pieces are exactly alike. Every piece of stone has natural variations, markings, shadings and inclusions which are not defects but rather inherent characteristics of stone product that are impossible to represent in one sample. We advise you to confirm current quarry conditions and characteristics of the stone at the time of ordering and/or specifying.

Sahrai Travertine SBB

CONTEMPORARY COLLECTION


NORTH AMERICAN
STONE AND TILE



Standard Sizes	Thickness		
	5/8"	5/7"	5/4"
	15mm	18mm	30mm
16"x 24" / 406 x 610	●	●	●
16"x 32" / 406 x 812	●	●	●
24"x 24" / 610 x 610	●	●	●
24"x 36" / 610 x 915	●	●	●
24"x 48" / 610 x 1200		●	●
Roman Pattern	●	●	●
French Pattern	●	●	●
3 pcs Pattern	●	●	●
16"x FL / 406 x FL	●	●	●
20"x FL / 508 x FL	●	●	●
24"x FL / 610 x FL	●	●	●
Slabs			●
Custom Sizes	Cut-to-size and additional finishes are available. Contact our sales representative for details and pricing.		

Tolerances: In compliance with Stone Industry Standards, Vol. VII
Calibrated: Available upon request
Freeze Thaw: No
Available Thickness: 5/8" up to 6" / 15mm up to 152mm
Average Slab Size: 100" → 115" x 55" → 60" / 2500 → 2900mm x 1400 → 1500mm
Architectural Elements: Stair Treads, Rebate, Wall Caps, Coping, Curbs, Corners and Sills
Natural stone is a product of nature, and no two pieces are exactly alike. Every piece of stone has natural variations, markings, shadings and inclusions which are not defects but rather inherent characteristics of stone product that are impossible to represent in one sample. We advise you to confirm current quarry conditions and characteristics of the stone at the time of ordering and/or specifying.

Sahrai Travertine Sandblasted

CONTEMPORARY COLLECTION



Standard Sizes	Thickness		
	5/8"	5/7"	5/16"
	15mm	18mm	30mm

16"x 24" / 406 x 610	•	•	•
16"x 32" / 406 x 812	•	•	•
24"x 24" / 610 x 610	•	•	•
24"x 36" / 610 x 915	•	•	•
24"x 48" / 610 x 1200		•	•
Roman Pattern	•	•	•
French Pattern	•	•	•
3 pcs Pattern	•	•	•
16"x FL / 406 x FL	•	•	•
20"x FL / 508 x FL	•	•	•
24"x FL / 610 x FL	•	•	•
Slabs			•
Custom Sizes	Cut-to-size and additional finishes are available. Contact our sales representative for details and pricing.		

Tolerances:	In compliance with Stone Industry Standards, Vol. VIII
Calibrated:	Available upon request
Freeze Thaw:	No
Available Thickness:	5/8" up to 6" / 15mm up to 152mm
Average Slab Size:	100" → 115" x 55" → 60" / 2500 → 2900mm x 1400 → 1500mm
Architectural Elements:	Stair Treads, Rebate, Wall Caps, Coping, Curbs, Corners and Sills
<i>Natural stone is a product of nature, and no two pieces are exactly alike. Every piece of stone has natural variations, markings, shadings and inclusions which are not defects but rather inherent characteristics of stone product that are impossible to represent in one sample. We advise you to confirm current quarry conditions and characteristics of the stone at the time of ordering and/or specifying.</i>	

Sahrai Travertine Tumbled

CONTEMPORARY COLLECTION



Standard Sizes	Thickness		
	5/8"	5/7"	5/4"
	15mm	18mm	30mm
16"x 24" / 406 x 610	●	●	●
16"x 32" / 406 x 812	●	●	●
24"x 24" / 610 x 610	●	●	●
24"x 36" / 610 x 915	●	●	●
24"x 48" / 610 x 1200		●	●
Roman Pattern	●	●	●
French Pattern	●	●	●
3 pcs Pattern	●	●	●
16" x FL / 406 x FL	●	●	●
20" x FL / 508 x FL	●	●	●
24" x FL / 610 x FL	●	●	●
Slabs			●
Custom Sizes	Cut-to-size and additional finishes are available. Contact our sales representative for details and pricing.		

Tolerances:	In compliance with Stone Industry Standards, Vol. VIII
Calibrated:	Available upon request
Freeze Thaw:	No
Available Thickness:	5/8" up to 6" / 15mm up to 152mm
Average Slab Size:	100" → 115" x 55" → 60" / 2500 → 2900mm x 1400 → 1500mm
Architectural Elements:	Stair Treads, Rebate, Wall Caps, Coping, Curbs, Corners and Sills
<i>Natural stone is a product of nature, and no two pieces are exactly alike. Every piece of stone has natural variations, markings, shadings and inclusions which are not defects but rather inherent characteristics of stone product that are impossible to represent in one sample. We advise you to confirm current quarry conditions and characteristics of the stone at the time of ordering and/or specifying.</i>	

The logo features a stylized graphic of five vertical bars of varying heights, resembling a bar chart or a modern architectural element, positioned above the text. The text is in a clean, white, sans-serif font.

NORTH AMERICAN
STONE AND TILE

