

tacit

Lucy Andrews
Kate Bajic
Sharyn Dunn
Graeme Hawes
Jo Keogh
Interlace
Gillian MacFarland
Michelle McKinney
Muuna
Kiran Ravillious
Emma-Jane Rule
Ruth Singer
Gizella Warburton
Jane Sunbeam
Lucy Naylor
Ashleigh Richardson
Maya Kiran-Mistry
Susan Knox
Hannah White

Contemporary Makers from Leicester & Leicestershire

Part of LCB's Design Season 1, Leicester's Creative Hub & Agency LCB is proud to welcome you to tacit an exhibition showcase developed and presented in collaboration with Ruth Singer for Made in Leicestershire and Jo Keogh of The Clay Room.

Taking place at LCB Depot from 17th to 29th September this showcase brings together some of the finest professional designer-makers based in Leicestershire who use hand making processes to create extraordinary art, design and objects. Tacit aims to show that modern contemporary craft is thriving in Leicestershire and that exceptional, unexpected and innovative work is being produced.

Leicestershire is home to makers who exhibit, sell and thrive in an international market, who exhibit in the UK's top galleries, who win significant prizes and who are taking Leicestershire's finest craft skills out into the world. The makers have been selected to show the range of practice, particularly those pushing their practice forward and creating distinctive and original work. Many, though not all the makers have studied in Leicestershire and many of them teach in the county's universities. Some are just starting out while others have established practice but all have strong roots in the county and show the incredible talent within our region.

Please contact the makers directly to enquire about buying their work or commissioning a unique piece.

the partners

Made in Leicestershire

Made in Leicestershire is an initiative designed to support and connect Leicestershire makers. Led by consultant Ruth Singer The project has delivered peer mentoring groups, marketing and promotion development plans and online communications.

The Clay Room

The Clay Room is an open access ceramics studio based at Makers' Yard in Leicester city centre with a membership scheme for experienced makers and a range of classes for all abilities. The Clay Room aims to provide a supportive environment for the professional development of emerging makers. The Clay Rooms involvement with design season provides a platform for this within the wider creative community.

LCB Depot

LCB Depot is the city's creative industries hub with over 150 business tenants, a range of in-house business support services and a programme of exhibitions, residencies and events aimed at businesses and the general public

Design Season allows us to shine a light on the range and diversity of design across different disciplines in the creative industries from the Leicester area.

We are motivated and enthusiastic to be working with the Clay Room and Made in Leicestershire to deliver tacit.

<https://ruthsinger.com/tacit-leicestershire-designer-makers-exhibition/>

<http://www.lcbdepot.co.uk/designseason>

<https://www.theclayroom.co.uk>

Lucy Andrews

Ceramics

Lucy is an emerging maker based in Leicester. Her latest work combines traditional making processes, repetitive ceramic forms and movement.

The 'Trumpet' pieces are manipulated cone shapes that have been conjoined, resulting in playful, dynamic shapes. They are non-functional, sculptural pieces that stand or lie awkwardly as unfamiliar forms.

The 'Landscape' pieces are directly inspired by the contemporary ideas of ceramic artist Neil Brownsword, and his work with skilled makers from the Potteries in Stoke-on-Trent. I am interested in the performance of repetition, coupled with the literal 'throwing away' of materials, objects and skills that are no longer valued.

The objects challenge the preconception of ceramics as a purely functional material. Pots hold things, contain things, display things, but are rarely valued as stand-alone pieces. When used as an artistic medium, almost any shape is possible, but our predetermined familiarity with the material is more difficult to overcome.

Instagram: [@lucyandrews_ceramics](https://www.instagram.com/lucyandrews_ceramics)



Kate Bajic

Jewellery and metalwork

Kate is an established jeweller who exhibits and sells internationally from her studio in Leicestershire.

Drawing on interests in both natural form and science, Kate focuses on lichen species and their chemical compound structures as the main inspiration for her work. Through photography and sample collection from the countryside around her home, Kate examines their minute complexity, translating aspects of this into her work. Kate is keen to experiment with materials and processes when making, and has now begun to increase the scale of her work to include sculptural pieces alongside wearable contemporary jewellery.

<https://www.katebajic.co.uk>

Instagram: @katebajic



DuO- Kate Bajic & Jennie McCall

Metal and ceramics

Kate and Jennie began working together in early 2018. Jennie's speciality is ceramics, porcelain and parian in particular, whereas Kate is a jeweller working mainly in precious metals. They both have a strong interest in natural form and their initial collection is based on corals. 'Drift' is intended as a table centrepiece and can be composed in a variety of ways as it is made up of several freestanding elements.

Instagram: @info_duo

Sharyn Dunn

Sculptural paper

Sharyn's work focusses on designs that are thought provoking, interactive and explore the interaction of light through layered geometric forms.

The natural geometric forms are created when the materials are folded and further enhanced by piercing patterns.

The works are produced from a range of simulated parchment or fine polymers, each chosen for their visual quality, strength and ecological features.

<https://www.sharyndunn.com>



sharyn Dunn 2012 Copyright

Graeme Hawes

Glass

Graeme became captivated by the hostile environment of a glassblowing workshop on his first day at Sunderland University. Since completing a Masters degree at the Royal College of Art, Graeme has spent his professional life combining freelance glass making and teaching with his own glass making practice.

His work encompasses small batch production for galleries and retail outlets through to large scale lighting and bespoke commissions for individuals, hotels around the world and well respected lighting and chandelier companies. His work includes the use of many traditional handmade techniques combined with a very contemporary edge.

<http://thecitystudio.co.uk>

Instagram: @grhawes

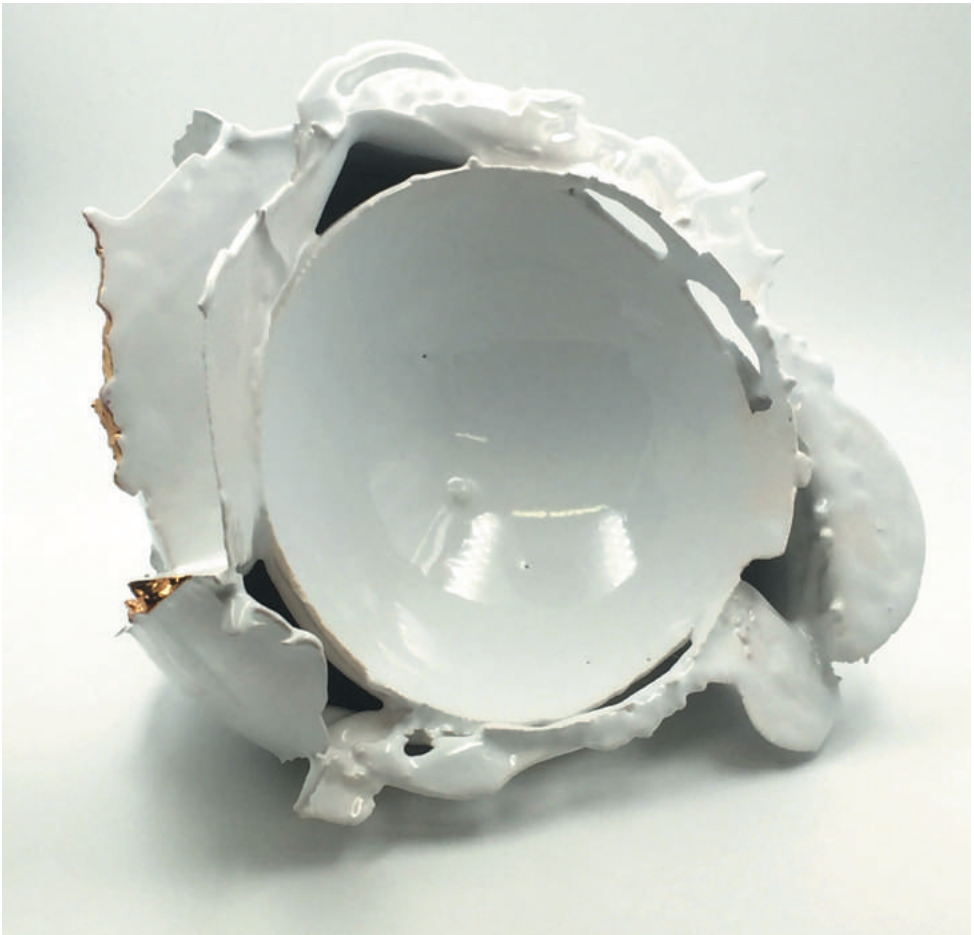


Jo Keogh

Ceramics

The work of Jo Keogh uses the language of the everyday vessel as the basis for exploration. Each unique object is formed using a series of traditional ceramic processes, taking advantage of the idiosyncrasies of both the hand-formed and the moulded to produce vessels in which refinement of the factory-formed and the gestural marks of the maker are brought together. Surface treatments are reflective of industrial heritage rather than artistic method; hinting at past ceramic reputations and the ritualistic role of ceramic vessels throughout history. The work remains faithful to ceramic traditions but not convention. It has different intentions, forcing us to reconsider our relationship with the vessel and its functions.

<http://www.jokeoghceramics.co.uk>
Instagram: @jokeoghceramics



Interlace - Ruth Singer and Bethany Walker

Textiles & concrete

Interlace is a collaboration between textile artists Ruth Singer & Bethany Walker using delicate, manipulated textile set into concrete. The two makers came together to explore the potential of Ruth's textile manipulations with Bethany's concrete compositions in new, organic forms.

Our work is created using a carefully-selected textiles, cut, stitched and manipulated to create organic structures, echoing fallen blossom or woodland fungus. These textiles are set into a mould and then fixed with cement, which solidifies into concrete, rendering the textiles permanent.

Bethany is a graduate of De Montfort University and Ruth is based in Leicester city. Their collaborative work has been exhibited widely including in Made in the Middle touring exhibition curated by Craftspace.

<https://interlacetextile.com>

Instagram: @interlacetextile



Gillian McFarland

Paper

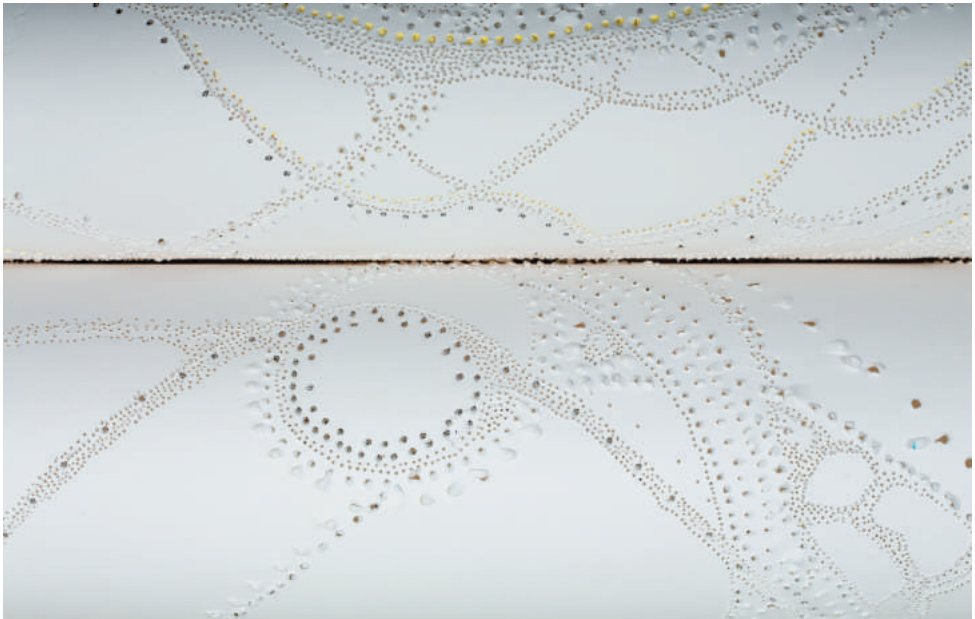
Gillian's work is a response to the wear and tear of life on both ourselves and our environment. She takes the opposing themes of 'wearing out' and 'holding together' as the starting point to create 'puncture pictures'. The technique creates a tension where the paper becomes fragile and disintegrates and is both worn out and barely held together. By making work in the space between wholeness and brokenness, Gillian questions our attribution of value to things and how our attachment intensifies at the point we are about to lose them.

Gillian's previous work as an art therapist within an NHS psychiatric service are a strong influence on her working processes.

Gillian is an established artist with a varied practice across different media and often works in collaboration. She exhibits internationally.

<https://gillianadair.co.uk>

Instagram: @gillianadairmcf



Michelle McKinney

Metalwork

Michelle's work in woven metal explores fragility, ephemerality and the human condition. These pieces exploit the contrast between the fragile human lives and the manmade industrial metal she uses as her material. She invites us to look inward and consider ourselves as part of nature, to explore our own hidden identity.

Michelle is an established artist who exhibits at high profile art and design fairs in the UK and has made commissions for hotels, museums and the British Council.

<http://www.michellemckinney.co.uk>

Instagram: @mckinneyartist



Muuna

Textile design

MUUNA is an experimental materials studio gaining a reputation as a forward thinking practice that aims to push the boundaries of textile design beyond the traditional. Through an interdisciplinary approach MUUNA fuses craftsmanship, artistry and innovation to present visionary textile concepts with a specialised focus on woven and embroidery techniques. Hannah Croft is an award winning designer and founder of MUUNA. After several years in the textiles industry Hannah returned to research, completing an MA in Textile Design Innovation with Distinction in 2016 before setting up MUUNA.

www.muuna.co.uk

Instagram: [@muuna_matter](https://www.instagram.com/muuna_matter)



Kiran Ravilious

Block printed paper and textile

Kiran Ravilious uses traditional lino printmaking techniques to produce unique and vibrant hand printed designs on natural linen products including cushion covers, tea towels, lampshades, and more.

Each design is hand-carved and printed by her in her studio in Leicester, England. Kiran has also produced a range of wallpapers and fabrics using designs originating from her block prints and digitally repeating them.

<http://www.kiranravilious.com>

Instagram: @kiran_ravilious



Emma-Jane Rule

Metalwork

Using the technique called fold forming, alongside traditional metalworking practices, Emma explores the intriguing nature of metals. Her uniquely folded vessels, sculptures, jewellery and lighting have an organic flow, reflecting the lines and rhythms found in the natural world. She is just starting an MA in Design at De Montfort University to develop her skills and take her practice further.

<http://www.emma-janerulesilversmith.co.uk>

Instagram: @emmajanerule



Ruth Singer

Textiles

Ruth creates textile pieces heavily inspired by her previous career working in museums. She uses slow techniques of hand stitch and traditional textile processes to express ideas including hidden stories, creating visual records of ephemeral experiences, change and decay as well as intensely personal and emotive stories around loss and remembrance.

Tracery, a quilt made of holes, draws comparisons between damaged historic quilts and the spaces of grieving and loss. The use of holes, spaces, negative space and repair analogies to explore these ideas. Tracery has been made and unmade to form a quilt purely of seams holding the remaining cloth together.

Ruth is an established, award-winning maker based in Leicester, focussing on exhibitions and public engagement project work. She is also consultant in the craft and textile field.

www.ruthsinger.com

Instagram: [@ruthsingertextiles](https://www.instagram.com/ruthsingertextiles)



Gizella Warburton

Textile

Gizella's work has a raw and simple materiality grounded in sensory experience of place. Layers of detail are revealed or hidden as light and shadow pass across and through surfaces, echoing the transience of emotional and physical landscape. Abstract compositions evolve through the tactile and contemplative process of drawing with paper, cloth and thread.

'notes for a building' was created in 2014 for an exhibition at Makers Yard. It focusses on the regeneration of the building and details the worn patinas and the 'blurring' of imprints as layers merge into the fabric of the spaces. Details explore traces of memory and the shifts and frameworks of industry and of time passing, containing both what remains and what changes.

Gizella is an established maker based in rural Leicestershire. She exhibits and sells internationally.

www.gizellakwarburton.co.uk

Twitter: @gizellakw



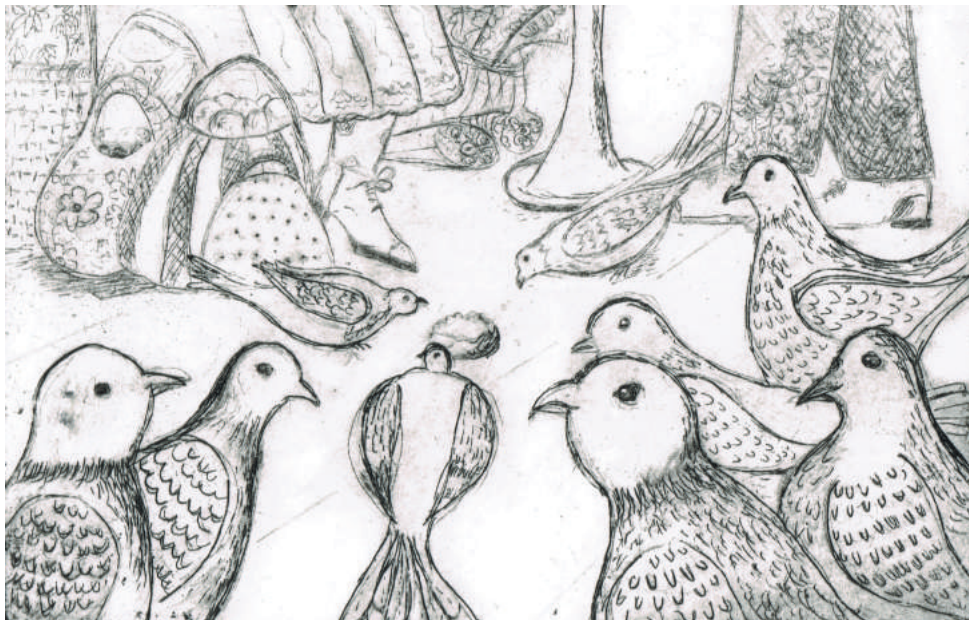
Jane Sunbeam

Currently exhibiting in the Print Room with
Leicester Print Workshop

Jane is an artist/illustrator who specialises in printmaking. The work in this exhibition was created during her residency at Leicester Print Workshop, and was a response to the work of Suzanne Balkanyi which is on display in the exhibition space at the Workshop. Her starting point was observational drawing in Leicester Market, which she then explored, finding the narrative arcs within the everyday, which she then transformed into etchings. For Jane, it was important to see the market from many different viewpoints, from that of the Wyvern that sits atop the Corn Exchange to the pigeons that grappled for crumbs and who were ever present when Jane was sketching.

www.janesunbeam.com

Instagram: [@janesunbeam_illustrates](https://www.instagram.com/janesunbeam_illustrates)



Introducing makers

Lucy Naylor

I am currently studying Design Crafts at De Montfort University specialising in ceramics and 3D printing. This summer I have been exploring the idea of repetition through colour (relating to weather conditions) and different processes used in making. I logged the weather (sun or cloud) each day to build up colour context for my work and chose repetitive processes like 3D printing to make models from which moulds were made, each of the 31 pieces were then cast in coloured Jesmonite, sanded, waxed and buffed. Each process is a repetitive and time consuming action reflecting each day of my summer.

Email: lucnaylor@gmail.com

Instagram: [@co_rd](https://www.instagram.com/co_rd)

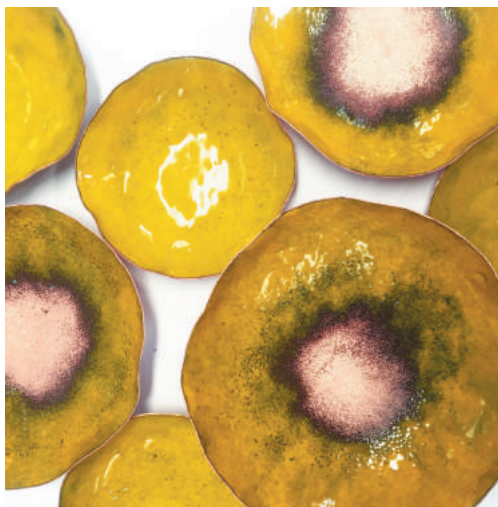


Ashleigh Richardson

I am currently a third year student at De Montfort University studying BA(Hons) Design Crafts. This is where I found my love for working with metal and enamel combined. I have always been passionate about nature and see the natural world as a constant inspiration for my work.

Instagram: [ashleighrichardsoncraft](https://www.instagram.com/ashleighrichardsoncraft)

Facebook: [Ashleigh Richardson Craft](https://www.facebook.com/AshleighRichardsonCraft)

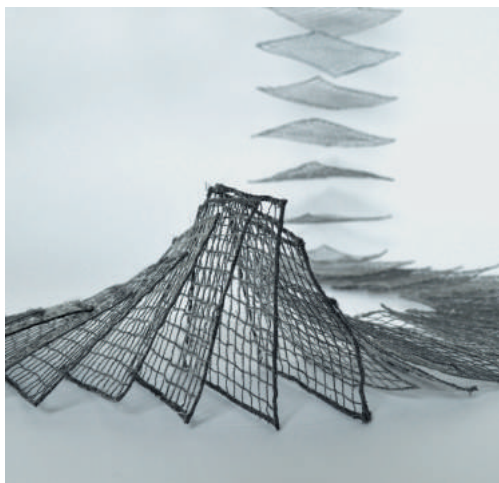


Maya Kiran Mistry

Strongly influenced by photography in the urban environment, I am inspired by the main elements of the leading lines, negative space and the simplicity of shapes. These drive my practice in textile art, through the exploration of flat and sculptural forms; two and three dimensions. Using digital embroidery onto water-soluble fabric to create structured yet fragile forms, which evokes a sense of delicateness in comparison to the grid system of the city streets. Through applying a greyscale colour palette, it deters from what I feel are any unnecessary distractions.

Email: maya.kiran@outlook.com

Instagram: @Maya Kiran



Susan Knox

I am a multi-disciplinary artist and creator drawn towards dramatic, colourful and abstract forms. My creative practice has been influenced by opera, drama and theatre as a textile artist and costume designer. Recently I have included ceramics and glass to my creative repertoire. I am inspired by volcanic activity in Iceland and I have responded with a collection of 'pod' like abstract glass sculptures. The kitchen utensils portray the underlying feminine presence of energy, creation, control and life giver. Glass represents the molten lava which twists and folds forming abstract shapes and textures as it cools in the atmosphere



De Montfort University Leicester
Course: BA(Hons) Design Crafts

Instagram: - [suecknox](#)

Email: susancknox@gmail.com

Holly White

(Clay Room member)

Throwing for me is a type of meditation; I enjoy the challenge of perfecting a small delicate form, whilst also creating a sense of balance. This allows for a certain level of tactility. The pots are small in stature but between them create a sense of space - reflecting back to the brutalist buildings which are a big part of the inspiration for the forms themselves. Brutalism questions the creation of space in a mass production, industrialist society. This translates into my ceramics through the juxtaposition of presence and appearance.

Email: littleballofclay@outlook.com
Facebook.com/[littleballofclay](https://www.facebook.com/littleballofclay)
Instagram: [@littleballofclay](https://www.instagram.com/littleballofclay)



<https://ruthsinger.com/tacit-leicestershire-designer-makers-exhibition/>
<http://www.lcbdepot.co.uk/designseason>
<https://www.theclayroom.co.uk>

