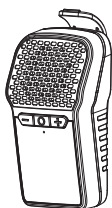


## Attachi Clip-on Wireless Speaker



### User Manual

### Specs

Product Type	wireless speaker
Speaker system	Stereo
Dimensions	77.5 x 40 W x 24.5 D mm
Weight	2.0L
Driver	28mm 2W
Audio Playtime	Approx. 5 hours (100% Volume)
BT Version	V5.3
Rated Power	2 Watts
Battery	3.7V 800mAh
Charging Time	Approx. 2 hours (USB C)
Frequency Response	100-20KHz
Range	Up to 10m
Input power:	DC 5V/0.5A
Waterproof:	IPX7
Built-in Microphone	

### KIND REMINDER

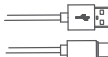
- If the product has not been used for over three months, it should be charged before use.
- To maintain battery health, it is recommended to charge the product once every three months when not in regular use.
- For optimal performance, always use the product when it is fully charged.

### What's in the box



Speaker 1pc

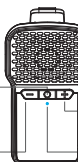
User Manual 1pc



Charging Cable 1pc

### Key Functions

- Power on/off
- Play/Pause
- Voice assistant
- Tws on/off
- Reset



Driver

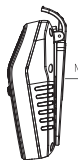
Volume

Next song

LED

Charging port

- Volume
- Previous song



Magnet attachment

### Functions Description

Button	Operating	Function Description
	Single Press	Play/Pause
	Long press	Press and hold for 2" to power on/off
	Double click	Voice assistant(Siri for apple)
	Three click	Enable/Disable TWS
	Five click	Reset
		a.When the call is incoming: single press to connect the call. b.When a call has been answered: single press to hang up the call. c.When the call is incoming: long press to reject the call.
	Single press	Volume +
	Long press	Next song
	Single press	Volume -
	Long press	Previous song
LED light description		Flaring: Bluetooth not on - Flaring: Bluetooth on Two on: Bluetooth low level Charging: Red light on - Fully charged: Red light off

### First time set up



- Turn on the speaker, and you will hear a prompt tone.

- Open your phone's Bluetooth settings and select "Attachi" to pair.

### Notes:

1. If the device is not paired within 30 minutes after being turned on, it will automatically shut down. When the battery is low, a prompt tone will play, and the speaker will automatically power off.

2. For Apple users experiencing low volume, you can adjust the settings on your phone by going to: Settings > Sounds & Haptics > Headphone Safety > Reduce Loud Sounds and turning off this option.

### FCC Statement

This device complies with Part 15 of the FCC Rules. Operation is subject to the following two conditions: (1) this device may not cause harmful interference, and (2) this device must accept any interference received, including interference that may cause undesired operation.

Any changes or modifications not expressly approved by the party responsible for compliance could void the user's authority to operate the equipment.

NOTE: This equipment has been tested and found to comply with the limits for a Class B digital device, pursuant to Part 15 of the FCC Rules. These limits are designed to provide reasonable protection against harmful interference in a residential installation. This equipment generates, uses, and can radiate radio frequency energy and, if not installed and used in accordance with the instructions, may cause harmful interference to radio communications. However, there is no guarantee that interference will not occur in a particular installation. If this equipment does cause harmful interference to radio or television reception, which can be determined by turning the equipment off and on, the user is encouraged to try to correct the interference by one or more of the following measures:

- . Reorient or relocate the receiving antenna.
  - . Increase the separation between the equipment and the receiver.
  - . Connect the equipment into an outlet on a circuit different from that to which the receiver is connected.
  - . Consult the dealer or an experienced radio/TV technician for help.
- The device has been evaluated to meet general RF exposure requirements. The device can be used in portable exposure conditions without restriction.

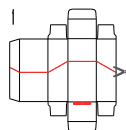


Made in China

### Safety Instructions

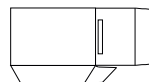
- Keep the product away from extreme heat and cold, as it can damage the battery and circuitry.
- Avoid immersing the product in liquids.
- For optimal performance, always use the product when it is fully charged.
- Do not use concentrated chemicals or detergents to clean the product.
- Use only a 5V/2.5A power supply. Using a power supply with a higher voltage may cause serious damage.
- Do not dispose of the product carelessly or place it near fire or high temperatures to prevent the risk of explosion.

### Second Life Use



UNFOLD THE PACKAGING AND CUT ALONG THE RED LINES.

FOLD IT AGAIN AND GLUE THE FLAPS.



3



ENJOY YOUR SPEAKER STAND.

By cutting along the visible dashed lines, your packaging transforms into a stand for your Attachi speaker. No tools, just a quick assembly to make it ready for use.