



Product Information Packet

ECP84310T-4

60HP,3560RPM,3PH,60HZ,364TS,A36056M,TEFC

Part Detail							
Revision:	F	Status:	PRD/A	Change #:		Proprietary:	No
Type:	AC	Elec. Spec:	A36WG0130	CD Diagram:	416820-036	Mfg Plant:	
Mech. Spec:		Layout:	617428-510	Poles:	02	Created Date:	11-27-2018
Base:		Eff. Date:	05-17-2021	Leads:	3#4		

Specs			
Catalog Number:	ECP84310T-4	Heater Indicator:	No Heater
Enclosure:	TEFC	Insulation Class:	F
Frame:	364TS	Inverter Code:	Inverter Ready
Frame Material:	Iron	IP Rating:	IP56
Output @ Frequency:	60.000 HP @ 60 HZ	KVA Code:	G
Synchronous Speed @ Frequency:	3600 RPM @ 60 HZ	Lifting Lugs:	No Lifting Lugs
Voltage @ Frequency:	460.0 V @ 60 HZ	Motor Lead Quantity/Wire Size:	3 @ 4 AWG
XP Class and Group:	CLI GP A,B,C,D	Motor Type:	A3656M
XP Division:	Division II	Mounting Arrangement:	F1
Agency Approvals:	CCSA US	Power Factor:	91
	UR	Pulley End Bearing Type:	Ball
Auxillary Box:	No Auxillary Box	Pulley Face Code:	Standard
Base Indicator:	Rigid	Shaft Ground Indicator:	No Shaft Grounding
Bearing Grease Type:	Polyrex EM (-20F +300F)	Shaft Rotation:	Phase Seq-Std Rot (CCWODE)
Constant Torque Speed Range:	15-60	Shaft Slinger Indicator:	No Slinger
Current @ Voltage:	65.100 A @ 460.0 V	Speed Code:	Single Speed
Design Code:	B	Motor Standards:	NEMA
Drip Cover:	No Drip Cover	Starting Method:	Direct on line

Duty Rating:	CONT	Thermal Device - Bearing:	None
Enclosure Modification:	841	Thermal Device - Winding:	None
Feedback Device:	NO FEEDBACK	XP Temp Code:	T3

Nameplate NP4139

CAT #	ECP84310T-4			FR	364TS	IP56			
SPEC	A36-6000-0130			ENCL	TEFC	DES	B		
HZ	60	PH	3	CL	F	HP	60	SF	1.15
VOLTS	460			AMPS	65.1			PF	91
RPM	3560	MAX RPM	4500	SER					
NEMA-NOM-EFF	95	%		RATING	40C AMB-CONT				
GUAR MIN. EFF	94.1	%		BRG DE	6313			BRG ODE	6313
CL I DIV 2 GRPS	A,B,C,D			CL I ZONE 2 GRPS				IIA,IIB,IIC	TEMP T
CT HZ	6-60			VT HZ	0-60				3-200
CHP HZ	60-75			INV TEMP CL	200			C	
				MTR WT	939			LBS	

Nameplate NP4140									
CAT #		ECP84310T-4				ROTOR BARS		38	
SPEC		A36-6000-0130				STATOR SLOTS		48	
SER						MAX CORR KVAR		5	
GREASE		POLYREX EM							
ABMA DE BRG		65BC03J30X		ODE		65BC03J30X			
SPACE HEATER LEADS H1-H2:									
MAX. SPACE HEATER TEMP.				C		V		TIE LIKE NUMBERS	
						A		TOGETHER	
								W	

Parts List		
Part Number	Description	Quantity
SA363356	SA A36-6000-0130	1.000 EA
RA352629	RA A36-6000-0130	1.000 EA
NP4139	SS SUPER E INVERTER DUTY IEEE 841 MAIN N	1.000 EA
NP4140	SS SUPER-E SD IEEE 841 CLI DIV2 UR CSA C	1.000 EA
000692000JP	N/P	1.000 EA
000692000VD	LABEL WARNING	1.000 EA
000692000VH	N/P (RELEASE 1000 PCS)	1.000 EA
004824015A	GREASE POLYREX EM	0.544 LB
032018008AK	HHCS 1/4-20X1 PLATED	4.000 EA
032018012DK	HHCS 1/2-13X1-1/2 PLTD. 032018012DR	4.000 EA
032018024CK	HHCS 3/8-16X3 PLTD.	3.000 EA
034180012DA	KEY 1X4X1/4X1-1/2 L	1.000 EA
034530032BB	P/NIP 1/4X4" SCHED 40	1.000 EA
034530052AB	P/NIP 1/8X6-1/2 GALV.	1.000 EA
034600001AA	BUSH 1/4TO1/8 BLACK	1.000 EA
034630002AB	CPLG 1/4" PLATED	1.000 EA
035000001G	GREASE RELIEF FITTING, ALEMITE 317400	1.000 EA
078559034A	+F/C A 078559001A - 360	1.000 EA
085922083BH	BRKT 360 085922072WCC KB	1.000 EA
410700004F	WSHR	1.000 EA
412118006A	DRAIN	1.000 EA
415028079E	INPRO SEAL,.625 WIDE,313 BRG	1.000 EA
415028079E	INPRO SEAL,.625 WIDE,313 BRG	1.000 EA
415072001B	CLAMP	1.000 EA

Parts List (continued)		
Part Number	Description	Quantity
415096002A	CPLG 1/8 HEX TYPE	1.000 EA
423709011C	WASHER	3.000 EA
702674001C	FAN 360	1.000 EA
032018012DK	HHCS 1/2-13X1-1/2 PLTD. 032018012DR	4.000 EA
032018024CK	HHCS 3/8-16X3 PLTD.	3.000 EA
034530020BB	P/NIP 1/4X2-1/2 PLATED	1.000 EA
034530032AB	P/NIP 1/8X4 PLATED	1.000 EA
034600001AA	BUSH 1/4TO1/8 BLACK	1.000 EA
034630002AB	CPLG 1/4" PLATED	1.000 EA
035000001G	GREASE RELIEF FITTING, ALEMITE 317400	1.000 EA
085922083BH	BRKT 360 085922072WCC KB	1.000 EA
412118006A	DRAIN	1.000 EA
415096002A	CPLG 1/8 HEX TYPE	1.000 EA
423709011C	WASHER	3.000 EA
032018010CK	HHCS 3/8-16X1-1/4 PLTD. 032018010CR	4.000 EA
033512008LB	HHTTS 1/4-20X1 PLATED	4.000 EA
034000014AB	WSH ID.406 OD.812 TH.065	4.000 EA
035000001A	ALFTG 1/8" 1610-BL	1.000 EA
035000001A	ALFTG 1/8" 1610-BL	1.000 EA
067053000B	GASK 320-400	1.000 EA
076708000BB	CONDUIT BOX-360	1.000 EA
076709000A	C/B Cover - 360	1.000 EA
406099000A	PLUG - FAN COVER 320-440	1.000 EA
415000103H	T/LUG #2AWG-4/0AWG	1.000 EA

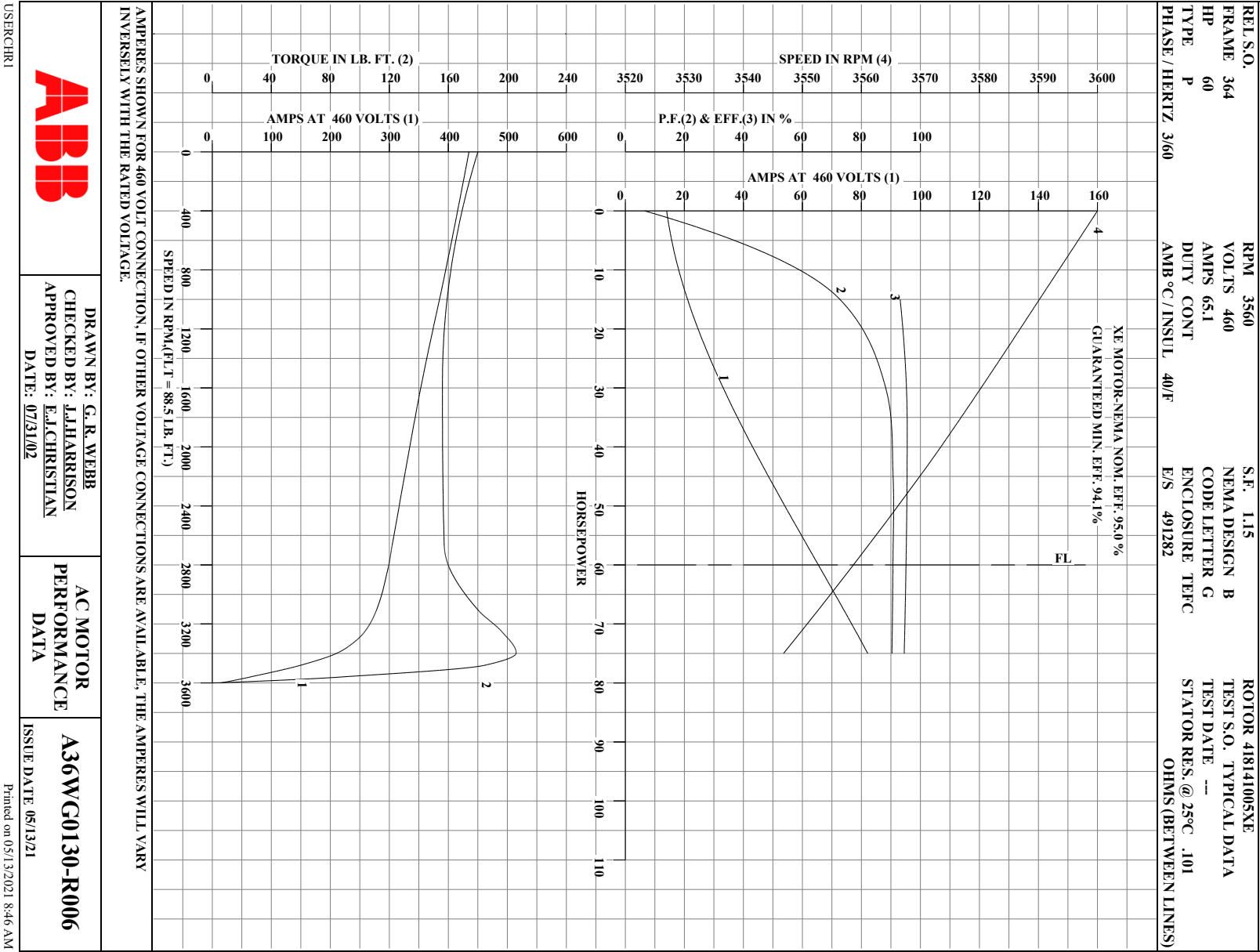
Product Information Packet: ECP84310T-4 - 60HP,3560RPM,3PH,60HZ,364TS,A36056M,TEFC

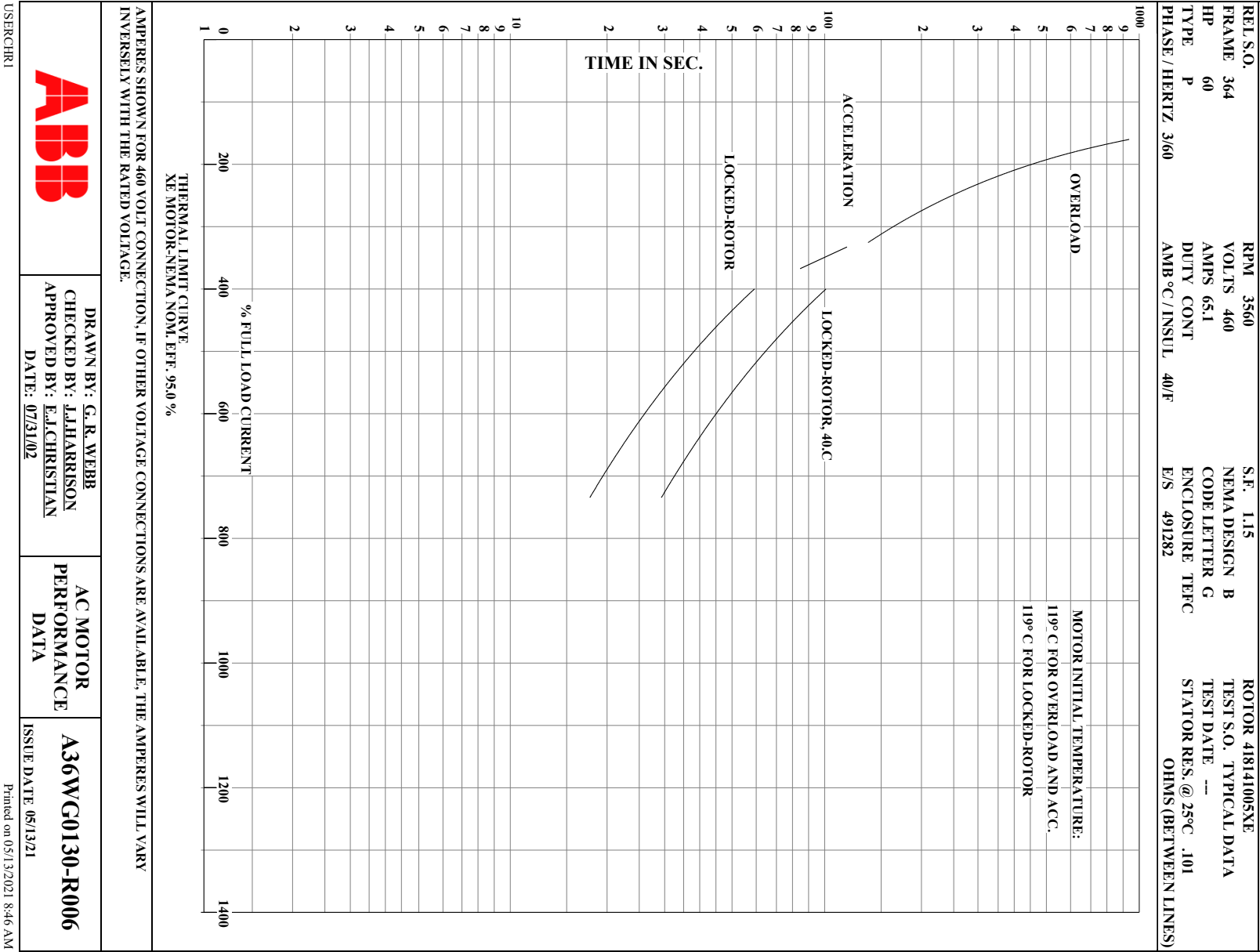
415039016A	TERBD, 360-400	1.000 EA
418150003A	GREASE FITTING CAP	1.000 EA
418150003A	GREASE FITTING CAP	1.000 EA
033775004EA	DRSCR #6-1/4 304 S.S.	4.000 EA
034180016GA	KEY 1/2X1/2X2 L	1.000 EA
MG1025N19	WILKO 778.50 BLUE GREEN - 55 GAL DRUMS	0.250 GA
004824003CBY	WILKO PAINT 060.02 - ACTIVATOR	0.063 GA
482403003BEF	RUST VETO 342	0.013 GA
MG1500G03-5	LACQUER PRIMER, GRAY	0.063 GA
421948051	LABEL, MYLAR	1.000 EA
14PA1000	PACKAGING 314 GROUP COMBINED PRINT	1.000 EA
LB1449	DIV-2/NEC WARNING LABEL	1.000 EA
000613006PU	N/P (RELEASE QTY 10,000) UL CSA LABEL	1.000 EA
032018005DL	1/2-13 X 5/8 SILICON BRONZE HHCS	1.000 EA

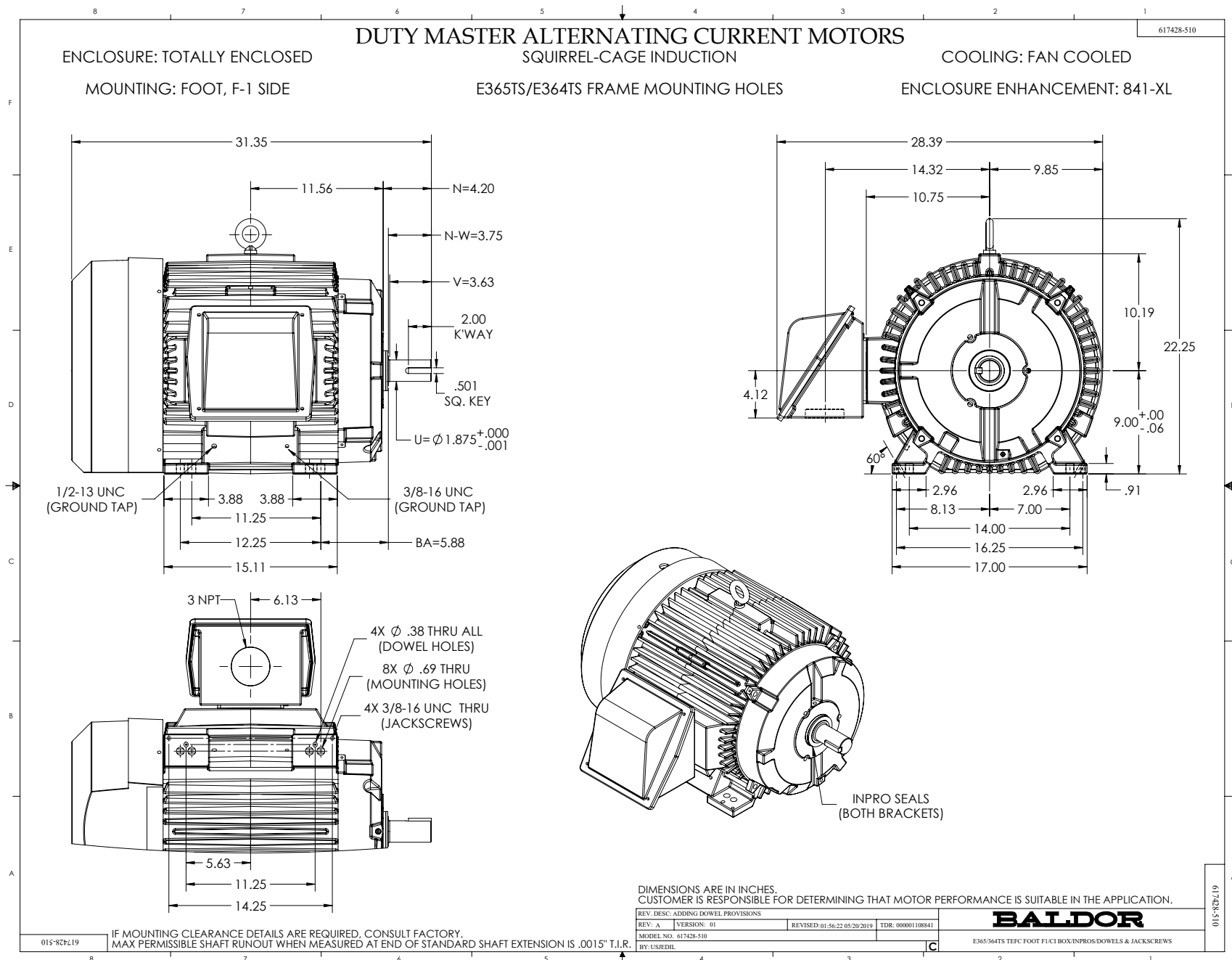
S/O	FRAME	HP	TYPE	PHASE/ HERTZ	RPM	VOLTS
	364	60	P	3/60	3560	460
AMPS	DUTY	AMB °C/ INSUL	S.F.	NEMA DESIGN	CODE LETTER	ENCLOSURE
65.1	CONT	40/F	1.15	B	G	TEFC
E/S	ROTOR	TEST S.O.	TEST DATE	STATOR RES. @25 °C OHMS (BETWEEN LINES)		
491282	418141005XE	---	---	.101		
PERFORMANCE						
LOAD	HP	AMPERES	RPM	% POWER FACTOR	% EFFICIENCY	
NO LOAD	0	14.1	3600	6.54	0	
1/4	15.0	20.8	3590	72.8	93.1	
2/4	30.0	33.4	3580	88.2	95.3	
3/4	45.0	48.6	3570	90.7	95.5	
4/4	60.0	65.1	3559	90.7	95.1	
5/4	75.0	82.2	3547	90.3	94.5	
SPEED TORQUE						
		RPM	TORQUE % FULL LOAD	TORQUE LB.-FT.	AMPERES	
LOCKED ROTOR	0	203		180	435	
PULL UP	1565	176		156	355	
BREAKDOWN	3397	233		206	212	
FULL LOAD	3559	100		88.5	65.1	
AMPERES SHOWN FOR 460 VOLT CONNECTION. IF OTHER CONNECTIONS ARE AVAILABLE, THE AMPERES WILL VARY INVERSELY WITH THE RATED VOLTAGE.						
TYPICAL DATA XE MOTOR-NEMA NOM. EFF. 95.0 % GUARANTEED MIN. EFF. 94.1%						
ABB		DRAWN BY: G.R. WEBB CHECKED BY: J.J.HARRISON APPROVED BY: E.J.CHRISTIAN DATE: 07/31/02		AC MOTOR PERFORMANCE DATA		A36WG0130-R006 DATE ISSUED 05/13/21

USERCHR1

Printed on 05/13/2021 8:46 AM







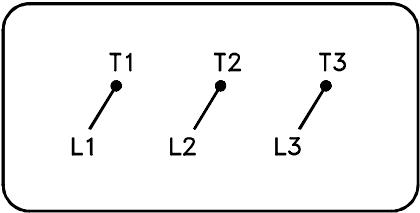
416820-036

A-C MOTOR

CONNECTION DIAGRAM

STANDARD 3 LEAD

CONNECTED



(N.P. 1575-BA)

416820-036

REV. DESC: LOADED TO BUS, C/R 335225			<div>BALDOR</div> <div>CONN DIAG - STANDARD 3 LEAD</div> <div>SH 1 of 1</div>
REV. LTR: -	VERSION: 00	TDR: 000000538207	
FILE: \MGA\00000\682		REVISED: 11: 54: 06 04/30/2010	
MTL: -		BY: RAGRA	

Marketing maintained PDF of MN408:

<http://www.baldor.com/support/Literature/Load.ashx/MN408?ManNumber=MN408>

Marketing maintained PDF of MN416:

<http://www.baldor.com/support/Literature/Load.ashx/MN416?ManNumber=MN416>