

Redline

PERFORMANCE

PERFORMANCE GAUGES CATALOGUE 2009-2010

Redline
PERFORMANCE
High Performance Gauges

*Setting a new standard for
quality and accuracy*

SMITHS
Range from Classic to Race

*Australian Importer
of Smiths Gauges*

pricol
OEM Quality Gauges

*Australian Importer
of Pricol Gauges*

• REDLINE RACE GAUGES • REDLINE MARINE GAUGES • SMITHS GAUGES • PRICOL

www.redlineauto.com.au

Pricol Series 1..... 3-6

Pricol Series 2..... 7-8

Smiths AC Cobra..... 9-10

Smiths Classic Black..... 11-12

Smiths Classic Magnolia..... 13-14

Smiths Mini..... 15

Smiths GT 40..... 16-17

Smiths Telemetrix..... 17-19

Smiths Motorsport..... 20-21

Redline Race..... 22-23

Gauge Pods and Housings.....23

Redline Marine.....24

Accessories..... 25-27

Terms of Trade.....27

The Hardiman Story

Hardiman Auto Supplies Pty Ltd had its beginnings in 1959 as Hardrowl Speed Equipment. This business was run as a partnership by two apprentice tool makers, Terry Hardiman and Ian Rowley.

Manufacturing commenced making lowering kits, panhard rods, traction rods, floor gear shift conversions, sports air filters, induction manifolds, ram tubes and the like. In 1963 the first speed shop in NSW was opened in the Sydney suburb of Beverly Hills.

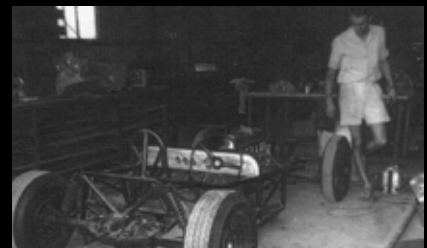
The Hardrowl partnership was dissolved in 1966 and Terry and Sylvia Hardiman commenced trading as Hardiman Auto Supplies Pty Ltd.

In 1972, the original speed shop in Beverly Hills was expanded to more than four times its original size. Manufacturing continued and additional product lines added. Importing from the USA commenced and the wholesale business continued to expand.

The retail business was sold in 1981, but the Beverly Hills property was retained and is still owned today. The manufacturing and wholesale business was then relocated to Ashford Avenue, Milperra. 1984 saw the move to larger purpose-built premises in Bullecourt Avenue, Milperra, where it still is today.

Product is imported from the USA, UK, India and Taiwan. Manufactured products are sold Australia-wide and exported to the UK, New Zealand and Indonesia. Under the Redline trademark, Hardiman Auto Supplies manufactures the largest range of inlet manifolds, carburettor adaptors and associated linkage components in the southern hemisphere.

Hardiman Auto Supplies was purchased by Terry and Sylvia's son Mark Hardiman and his wife Deborah in September 2005. Mark and Deborah have been expanding the product range and services of Hardiman Auto Supplies since.

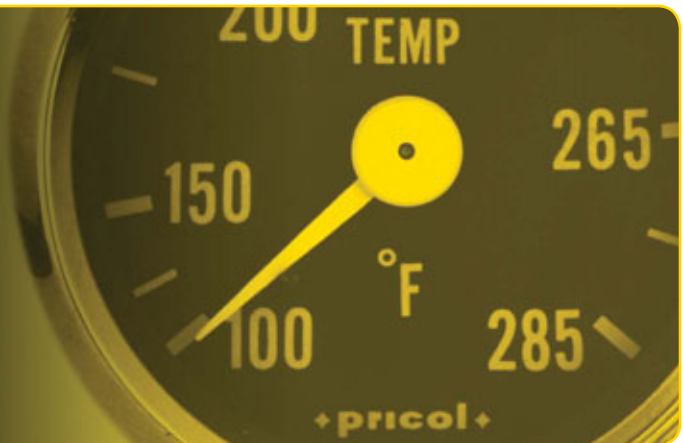


Pricol Gauges

Pricol performance gauges are available in Series 1 or Series 2 styles with Chrome or Black Bezels.

These high quality gauges feature precision movements and electrical circuits to suit all Automotive, Agricultural and Industrial applications. Pricol manufactures gauges for some of the most respected car companies and are exported to over 15 different countries throughout the world.

Pricol is a quality Assured Company and was the world's first instrument manufacturer to obtain ISO90001 Certification.



Pricol Series1

Pricol Series 1 gauges feature double "V" bezels and clear classic style markings

AMMETER

SERIES 1

Part No. 300540

Type: Electric
Range: 60-0-60 Amps
Scale: Arc
Fitting: Post & Nut
Dia: 52mm
Bezel: Black



BOOST

SERIES 1

Part No. 301524

Type: Mechanical
Range: 0-30 PSI
Scale: Full
Fitting: 1/8in NPT
Dia: 52mm
Bezel: Black
Use Fitting Kit Part No. LK-1



AMMETER

SERIES 1

Part No. 300582

Type: Electric
Range: 60-0-60 Amps
Scale: Arc
Fitting: Post & Nut
Dia: 52mm
Bezel: Chrome



BOOST

SERIES 1

Part No. 301542

Type: Mechanical
Range: 0-15 PSI
Scale: Full
Fitting: 1/8in NPT
Dia: 52mm
Bezel: Chrome
Use Fitting Kit Part No. LK-1



BOOST

SERIES 1

Part No. 301523

Type: Mechanical
Range: 0-15 PSI
Scale: Full
Fitting: 1/8in NPT
Dia: 52mm
Bezel: Black
Use Fitting Kit Part No. LK-1



BOOST

SERIES 1

Part No. 301543

Type: Mechanical
Range: 0-30 PSI
Scale: Full
Fitting: 1/8in NPT
Dia: 52mm
Bezel: Chrome
Use Fitting Kit Part No. LK-1



SPEEDOMETER

SERIES 1

Part No. 302521

Type: Electronic Programable
Range: 0-220 kph
Scale: Full
Fitting: Harness
Dia: 85mm Bezel: Chrome
In-Dash Mounting. Oil Dampened movement. Must be used with a hall effect sensor.



FUEL TANK LEVEL

SERIES 1

Part No. 303592

Type: Electric
Range: E-1/2-F
Scale: Arc
Fitting: Post & Nut
Dia: 52mm
Bezel: Black
Use Sender Part No. 301095



SPEEDOMETER

SERIES 1

Part No. 302522

Type: Electronic Programable
Range: 0-220 kph
Scale: Full
Fitting: Harness
Dia: 85mm Bezel: Black
In-Dash Mounting. Oil Dampened movement. Must be used with a hall effect sensor.



OIL PRESSURE

SERIES 1

Part No. 300541

Type: Electrical
Range: 0-100 PSI
Scale: Arc
Fitting: Post & Nut
Dia: 52mm
Bezel: Black
Use Sender Part No. 400083



FUEL PRESSURE

SERIES 1

Part No. 300543

Type: Mechanical
Range: 0-16 PSI
Scale: Full
Fitting: 1/8in NPT
Dia: 52mm
Bezel: Black
Use Fitting Kit Part No. LK-1



OIL PRESSURE

SERIES 1

Part No. 300542

Type: Mechanical
Range: 0-100 PSI
Scale: Full
Fitting: 1/8in NPT
Dia: 52mm
Bezel: Black
Use Fitting Kit Part No. LK-1



FUEL PRESSURE

SERIES 1

Part No. 300585

Type: Mechanical
Range: 0-16 PSI
Scale: Full
Fitting: 1/8in NPT
Dia: 52mm
Bezel: Chrome
Use Fitting Kit Part No. LK-1



OIL PRESSURE

SERIES 1

Part No. 300583

Type: Electrical
Range: 0-100 PSI
Scale: Arc
Fitting: Post & Nut
Dia: 52mm
Bezel: Chrome
Use Sender Part No. 400083



FUEL TANK LEVEL

SERIES 1

Part No. 301829

Type: Electric
Range: E-1/2-F
Scale: Arc
Fitting: Post & Nut
Dia: 52mm
Bezel: Chrome
Use Sender Part No. 301095



OIL PRESSURE

SERIES 1

Part No. 300584

Type: Mechanical
Range: 0-100 PSI
Scale: Full
Fitting: 1/8in NPT
Dia: 52mm
Bezel: Chrome
Use Fitting Kit Part No. LK-1



OIL PRESSURE

SERIES 1

Part No. 301520

Type: Mechanical
Range: 0-700 kPa
Scale: Full
Fitting: 1/8in NPT
Dia: 52mm
Bezel: Black
Use Fitting Kit Part No. LK-1



TACHOMETER

SERIES 1

Part No. 401401

Type: Electronic
Range: 0-8000 RPM
Scale: Full
Fitting: Spade
Dia: 85mm
Bezel: Black
In-Dash Mounted. Oil Dampened Movement. 3-4-6-8 Cyl setting



OIL PRESSURE

SERIES 1

Part No. 301527

Type: Electrical
Range: 0-500 kPa
Scale: Arc
Fitting: Post & Nut
Dia: 52mm
Bezel: Black
Use Sender Part No. 400083



TEMPERATURE

SERIES 1

Part No. 300539

Type: Mechanical
Range: 100-220°F
Scale: Full
Fitting: 1/8in NPT
Dia: 52mm
Bezel: Black
Capillary length 1500mm (4'11")



VACUUM/BOOST

SERIES 1

Part No. 306060

Type: Mechanical
Range: 30 inHg - 30 PSI
Scale: Full
Fitting: 1/8in Barb
Dia: 52mm
Bezel: Black
Supplied with line kit



TEMPERATURE

SERIES 1

Part No. 300545

Type: Electric
Range: 100-250°F
Scale: Arc
Fitting: Post & Nut
Dia: 52mm
Bezel: Black
Use Sender Part No. 400389



VACUUM/BOOST

SERIES 1

Part No. 306061

Type: Mechanical
Range: 30 inHg - 30 PSI
Scale: Full
Fitting: 1/8in Barb
Dia: 52mm
Bezel: Chrome
Supplied with line kit



TEMPERATURE

SERIES 1

Part No. 300580

Type: Electric
Range: 100-250°F
Scale: Arc
Fitting: Post & Nut
Dia: 52mm
Bezel: Chrome
Use Sender Part No. 400389



TACHOMETER

SERIES 1

Part No. 400807

Type: Electronic
Range: 0-8000 RPM
Scale: Full
Fitting: Spade
Dia: 85mm
Bezel: Chrome
In-Dash Mounted. Oil Dampened Movement. 3-4-6-8 Cyl setting



TEMPERATURE

SERIES 1

Part No. 300586

Type: Mechanical
Range: 100-220°F
Scale: Full
Fitting: 1/8in NPT
Dia: 52mm
Bezel: Chrome
Capillary length 1600mm (5'3")



TEMPERATURE

SERIES 1

Part No. 301521

Type: Mechanical
Range: 40-120°C
Scale: Full
Fitting: 1/8in NPT
Dia: 52mm
Bezel: Black
Capillary length 1600mm (5'3")



VACUUM

SERIES 1

Part No. 301525

Type: Mechanical
Range: 0-30 inHg
Scale: Full
Fitting: 1/8in NPT
Dia: 52mm
Bezel: Black
Use Fitting Kit Part No. LK-1



TEMPERATURE

SERIES 1

Part No. 301522

Type: Mechanical
Range: 40-120°C
Scale: Full
Fitting: 1/8in NPT
Dia: 52mm
Bezel: Black
Capillary length 2600mm (8'6")



VACUUM

SERIES 1

Part No. 301544

Type: Mechanical
Range: 0-30 inHg
Scale: Full
Fitting: 1/8in NPT
Dia: 52mm
Bezel: Chrome
Use Fitting Kit Part No. LK-1



TEMPERATURE

SERIES 1

Part No. 301526

Type: Electric
Range: 40-120°C
Scale: Arc
Fitting: Post & Nut
Dia: 52mm
Bezel: Black
Use Sender Part No. 400389



VOLTMETER

SERIES 1

Part No. 300544

Type: Electric
Range: 8-16 Volts
Scale: Arc
Fitting: Post & Nut
Dia: 52mm
Bezel: Black



TEMPERATURE

SERIES 1

Part No. 301774

Type: Mechanical
Range: 100-220°F
Scale: Full
Fitting: 1/8in NPT
Dia: 52mm
Bezel: Black
Capillary length 2600mm (8'6")



VOLTMETER

SERIES 1

Part No. 300581

Type: Electric
Range: 8-16 Volts
Scale: Arc
Fitting: Post & Nut
Dia: 52mm
Bezel: Chrome



TEMPERATURE

SERIES 1

Part No. 301775

Type: Mechanical
Range: 100-220°F
Scale: Full
Fitting: 1/8in NPT
Dia: 52mm
Bezel: Chrome
Capillary length 2600mm/ (8'6")





Pricol Series 2

Series 2 gauges feature "Square" style bezels with coloured sectors on their markings.

AMMETER

SERIES 2

Part No. 301486

Type: Electric
Range: 60-0-60 Amps
Scale: Arc
Fitting: Post & Nut
Dia: 52mm
Bezel: Chrome



OIL PRESSURE

SERIES 2

Part No. 301477

Type: Mechanical
Range: 0-100 PSI
Scale: Full
Fitting: 1/8in NPT
Dia: 52mm
Bezel: Chrome
Use Fitting Kit Part No. LK-1



AMMETER

SERIES 2

Part No. 301488

Type: Electric
Range: 60-0-60 Amps
Scale: Arc
Fitting: Post & Nut
Dia: 52mm
Bezel: Black



OIL PRESSURE

SERIES 2

Part No. 301478

Type: Mechanical
Range: 0-100 PSI
Scale: Full
Fitting: 1/8in NPT
Dia: 52mm
Bezel: Black
Use Fitting Kit Part No. LK-1



FUEL PRESSURE

SERIES 2

Part No. 301479

Type: Mechanical
Range: 0-16 PSI
Scale: Full
Fitting: 1/8in NPT
Dia: 52mm
Bezel: Black
Use Fitting Kit Part No. LK-1



OIL PRESSURE

SERIES 2

Part No. 301480

Type: Electrical
Range: 0-100 PSI
Scale: Arc
Fitting: Post & Nut
Dia: 52mm
Bezel: Black
Use Sender Part No. 400083



FUEL PRESSURE

SERIES 2

Part No. 301489

Type: Mechanical
Range: 0-16 PSI
Scale: Full
Fitting: 1/8in NPT
Dia: 52mm
Bezel: Chrome
Use Fitting Kit Part No. LK-1

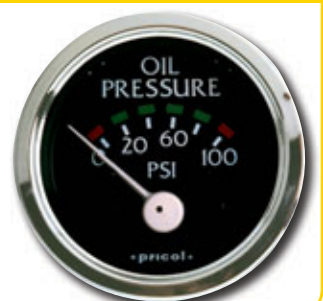


OIL PRESSURE

SERIES 2

Part No. 301481

Type: Electrical
Range: 0-100 PSI
Scale: Arc
Fitting: Post & Nut
Dia: 52mm
Bezel: Chrome
Use Sender Part No. 400083



TEMPERATURE

SERIES 2

Part No. 301475

Type: Mechanical
Range: 100-220°F
Scale: Full
Fitting: 1/8in NPT
Dia: 52mm
Bezel: Chrome
Capillary length 1800mm (5'11")



TEMPERATURE

SERIES 2

Part No. 301483

Type: Electric
Range: 100-250°F
Scale: Arc
Fitting: Post & Nut
Dia: 52mm
Bezel: Black
Use Sender Part No. 400389



TEMPERATURE

SERIES 2

Part No. 301476

Type: Mechanical
Range: 100-220°F
Scale: Full
Fitting: 1/8in NPT
Dia: 52mm
Bezel: Black
Capillary length 1800mm (5'11")



VOLTMETER

SERIES 2

Part No. 301484

Type: Electric
Range: 8-16 Volts
Scale: Arc
Fitting: Post & Nut
Dia: 52mm
Bezel: Chrome



TEMPERATURE

SERIES 2

Part No. 301482

Type: Electric
Range: 100-250°F
Scale: Arc
Fitting: Post & Nut
Dia: 52mm
Bezel: Chrome
Use Sender Part No. 400389



VOLTMETER

SERIES 2

Part No. 301485

Type: Electric
Range: 8-16 Volts
Scale: Arc
Fitting: Post & Nut
Dia: 52mm
Bezel: Black



For a full range of sensors, adaptors and accessories see Pgs 25-27.

For a full range of gauge pods see Pg23.

Smiths Gauges

For generations, Smiths gauges have set the standard in quality instruments and gauges for classic cars.

Starting with the original Smiths tooling, we employ only the finest materials and craftsmanship for each and everyone of our instruments, which means, not only are you assured of owning the original but undoubtedly the best, so why settle for anything less.

Smiths instruments are manufactured in the UK by Caerbot Automotive instruments and are also supplied into their chosen market segments in UK, Europe and North America.



AC Cobra Gauges

Smiths gauges are the original choice by AC and Carol Shelby for the iconic Cobra sports car. Now you can equip your own Cobra with the same instruments as used in the original.

For people seeking the ultimate in authenticity the speedo is also available in reverse wind (counter clockwise) operation as fitted to the original Cobra. Electric gauges are also available as an alternative to the original mechanical gauges.

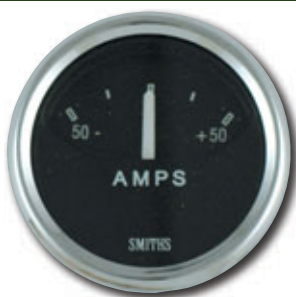
Smiths Cobra range, the only choice for Cobra builders!

AMMETER

AC COBRA

Part No. AM1640-04C

Type: Electrical
Range: 50-0-50 Amps
Scale: Arc
Fitting: Spade
Dia: 52mm
Bezel: Chrome



FUEL PRESSURE

AC COBRA

Part No. PG1310-03C

Type: Mechanical
Range: 0 - 10 PSI
Scale: Full
Fitting: 1/8in NPT
Dia: 52mm
Bezel: Chrome
Use Fitting Kit Part No. LK-2



CLOCK

AC COBRA

Part No. CA1100-09C

Type: Electrical
Range: 12hour
Scale: Full
Fitting: Spade
Dia: 52mm
Bezel: Chrome
Analogue Clock



FUEL TANK LEVEL

AC COBRA

Part No. BF2242-03C

Type: Electrical
Range: E-1/2-F
Scale: Arc
Fitting: Spade
Dia: 52mm
Bezel: Chrome
Use Fitting Kit Part No. TB9006Kit or TB9013Kit



OIL PRESSURE

AC COBRA

Part No. PG1310-02C

Type: Mechanical
Range: 0-100 PSI
Scale: Full
Fitting: 1/8in NPT
Dia: 52mm
Bezel: Chrome
Use Fitting Kit Part No. LK-2



SPEEDOMETER

AC COBRA

Part No. SN5346-05CB

Type: Electronic
Range: 0 - 300 kph
Scale: Full
Fitting: Harness
Dia: 100mm Bezel: Chrome
Clockwise Direction. Electronic
Programable calibration.
6 digit LED odometer.



OIL PRESSURE

AC COBRA

Part No. APG1310-02C

Type: Electrical
Range: 0 - 100 PSI
Scale: Arc
Fitting: Spade
Dia: 52mm
Bezel: Chrome
Use Sender Part No. PTR1000-6-10



TACHOMETER

AC COBRA

Part No. RVC2816-00CB

Type: Electric
Range: 0-8000 RPM
Scale: Full
Fitting: Harness
Dia: 100mm
Bezel: Chrome
Distributor/Coil sensing



OIL TEMPERATURE

AC COBRA

Part No. TG1301-24C078

Type: Mechanical
Range: 40 - 140°C
Scale: Full
Fitting: 3/8BSP
Dia: 52mm
Bezel: Chrome
Capillary length 78inches.
Comes with 3/8BSP to 5/8UNF adaptor



VOLTMETER

AC COBRA

Part No. ABV2220-07C

Type: Electrical
Range: 11 - 17 Volts
Scale: Arc
Fitting: Spade
Dia: 52mm
Bezel: Chrome



OIL TEMPERATURE

AC COBRA

Part No. ATG1301-24C

Type: Electrical
Range: 50 - 140°C
Scale: Arc
Fitting: Spade
Dia: 52mm
Bezel: Chrome
Use Sender Part No. TT6811-01



WATER TEMPERATURE

AC COBRA

Part No. TG1301-23C078

Type: Mechanical
Range: 40-140°C
Scale: Full
Fitting: 3/8BSP
Dia: 52mm
Bezel: Chrome
Capillary length 78inches.
Comes with 3/8BSP to 5/8UNF adaptor



SPEEDOMETER

AC COBRA

Part No. SN5346-03CB

Type: Electrical
Range: 0 - 300 kph
Scale: Full
Fitting: Harness
Dia: 100mm Bezel: Chrome
Anticlockwise Direction.
Electronic Programable calibration.
6 digit LED odometer.



WATER TEMPERATURE

AC COBRA

Part No. ATG1301-23C

Type: Electrical
Range: 50 - 140°C
Scale: Arc
Fitting: Spade
Dia: 52mm
Bezel: Chrome
Use Sender Part No. TT6811-01



Classic Black

The most recognizable of all of the Smiths range, the classic black faced gauge was not only the choice for such manufacturers as Aston Martin, Lotus and MG but also for every enthusiast looking to enhance the instruments of their ride.



AMMETER

CLASSIC BLACK

Part No. AM1640-03C

Type: Electrical
Range: 60-0-60 Amps
Scale: Arc
Fitting: Spade
Dia: 52mm
Bezel: Chrome



OIL PRESSURE

CLASSIC BLACK

Part No. BP2404-00C

Type: Electrical
Range: 0-100 PSI
Scale: Arc
Fitting: Spade
Dia: 52mm
Bezel: Chrome
Use Sender Part No. PTR1810-1-10



CLOCK

CLASSIC BLACK

Part No. CA1100-01C

Type: Electric
Range: 12hour
Scale: Full
Fitting: Spade
Dia: 52mm
Bezel: Chrome
Push Button to reset (Do Not Turn)



OIL PRESSURE

CLASSIC BLACK

Part No. PG1310-00C

Type: Mechanical
Range: 0-100 PSI
Scale: Full
Fitting: 1/8in NPT
Dia: 52mm
Bezel: Chrome
Use Fitting Kit Part No. LK-2



OIL PRESSURE & WATER TEMP

CLASSIC BLACK

Part No. GD1301-64

Type: Mechanical
Range: 0-100 PSI / 90-230°F
Scale: Arc
Fitting: 1/8in NPT / 3/8BSP
Dia: 52mm Bezel: Chrome
Capillary length 78inches.
Comes with 3/8BSP to 5/8UNF adaptor. Use LK-1 on Pressure



OIL TEMPERATURE

CLASSIC BLACK

Part No. BT2240-01C

Type: Electrical
Range: 50-140°C
Scale: Arc
Fitting: Spade
Dia: 52mm
Bezel: Chrome
Use Sender Part No. TT6811-01



FUEL TANK LEVEL

CLASSIC BLACK

Part No. BF2242-00C

Type: Electric
Range: 0-1/2-4/4
Scale: Arc
Fitting: Spade
Dia: 52mm
Bezel: Chrome
Use sender Part No. TB9006Kit or TB9013Kit



OIL TEMPERATURE

CLASSIC BLACK

Part No. TG1311-01C078

Type: Mechanical
Range: 40-140°C
Scale: Arc
Fitting: 3/8BSP
Dia: 52mm
Bezel: Chrome
Capillary length 78inches.
Comes with 3/8BSP to 5/8UNF adaptor



SPEEDOMETER CLASSIC BLACK

Part No. SN5234-05C

Type: Mechanical
Range: 0-240 kph
Scale: Full
Fitting:
Dia: 80mm
Bezel: Chrome
625 Revs per Kilometer



TACHOMETER CLASSIC BLACK

Part No. RVC1006-00CB

Type: Electrical
Range: 0-8000 RPM
Scale: Full
Fitting: Harness
Dia: 80mm Bezel: Chrome
4, 6 or 8 Cyl.
Adjustable redline pointer.
Suits 400-25 Tacho Pod



SPEEDOMETER CLASSIC BLACK

Part No. SNT5372-07CB

Type: Electric
Range: 0 - 270 kph
Scale: Full
Fitting: Harness
Dia: 100mm
Bezel: Chrome



TACHOMETER CLASSIC BLACK

Part No. RVC1006-05CB

Type: Electrical
Range: 0-8000 RPM
Scale: Full
Fitting: Harness
Dia: 80mm Bezel: Chrome
4, 6 or 8 Cyl.
Adjustable redline pointer.
Suits in-dash mounting



SPEEDOMETER CLASSIC BLACK

Part No. SNT5372-10CB

Type: Electric
Range: 0 - 220 kph
Scale: Full
Fitting: Harness
Dia: 100mm
Bezel: Chrome



VOLTMETER CLASSIC BLACK

Part No. ABV2220-00C

Type: Electrical
Range: 11-15 Volts
Scale: Arc
Fitting: Spade
Dia: 52mm
Bezel: Chrome



SPEEDOMETER CLASSIC BLACK

Part No. SN5234-07CB

Type: Electric
Range: 0 - 270 kph
Scale: Full
Fitting: Harness
Dia: 80mm
Bezel: Chrome



WATER TEMPERATURE CLASSIC BLACK

Part No. BT2240-00C

Type: Electrical
Range: 50-140°C
Scale: Arc
Fitting: Spade
Dia: 52mm
Bezel: Chrome
Use Sender Part No. TT6811-01



TACHOMETER CLASSIC BLACK

Part No. RVC1004-00CB

Type: Electrical
Range: 0-10000 RPM
Scale: Full
Fitting: Harness
Dia: 80mm Bezel: Chrome
4, 6 or 8 Cyl.
Adjustable redline pointer.
Suits 400-25 Tacho Pod



WATER TEMPERATURE CLASSIC BLACK

Part No. TG1310-01C078

Type: Mechanical
Range: 30-110°C
Scale: Full
Fitting: 3/8BSP
Dia: 52mm Bezel: Chrome
Capillary length 78inches.
Comes with 3/8BSP to 5/8UNF adaptor



Classic Magnolia

The Magnolia Range brings a warm quality feel associated with leather interiors and that vintage look.

Perfect in any hot rod or street classic, these instruments will imbue a classic atmosphere.



AMMETER

CLASSIC MAGNOLIA

Part No. AM1640-05C

Type: Electrical
Range: 60-0-60 Amps
Scale: Arc
Fitting: Spade
Dia: 52mm
Bezel: Chrome

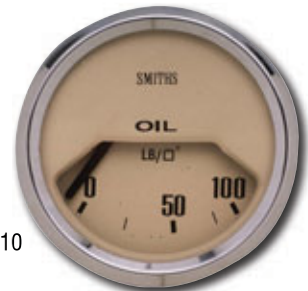


OIL PRESSURE

CLASSIC MAGNOLIA

Part No. BP2404-01C

Type: Electrical
Range: 0-100 PSI
Scale: Arc
Fitting: Spade
Dia: 52mm
Bezel: Chrome
Use Sender Part No. PTR1810-1-10



CLOCK

CLASSIC MAGNOLIA

Part No. CA1100-03C

Type: Electric
Range: 12hour
Scale: Full
Fitting: Spade
Dia: 52mm
Bezel: Chrome
Push Button to Reset (Do Not Turn)



OIL PRESSURE

CLASSIC MAGNOLIA

Part No. PG1310-01C

Type: Mechanical
Range: 0-100 PSI
Scale: Full
Fitting: 1/8in NPT
Dia: 52mm
Bezel: Chrome
Use Fitting Kit Part No. LK-2



OIL PRESSURE & WATER TEMP CLASSIC MAGNOLIA

Part No. GD1301-65C

Type: Mechanical
Range: 0-100 PSI / 90-230°F
Scale: Arc
Fitting: 1/8in NPT / 3/8BSP
Dia: 52mm Bezel: Chrome
Capillary length 78inches.
Comes with 3/8BSP to 5/8UNF adaptor. Use LK-1 on Pressure



OIL TEMPERATURE

CLASSIC MAGNOLIA

Part No. BT2240-05C

Type: Electrical
Range: 50-140°C
Scale: Arc
Fitting: Spade
Dia: 52mm
Bezel: Chrome
Use Sender Part No. TT6811-01



FUEL TANK LEVEL

CLASSIC MAGNOLIA

Part No. BF2242-02C

Type: Electric
Range: 0 - 1/2 - 4/4
Scale: Arc
Fitting: Spade
Dia: 52mm
Bezel: Chrome
Use sender Part No. TB9006Kit or TB9013Kit



VOLTMETER

CLASSIC MAGNOLIA

Part No. BV2220-04C

Type: Electrical
Range: 10-15 Volts
Scale: Arc
Fitting: Spade
Dia: 52mm
Bezel: Chrome



SPEEDOMETER

CLASSIC MAGNOLIA

Part No. SN5234-09C

Type: Mechanical
Range: 0-240 kph
Scale: Full
Fitting:
Dia: 80mm
Bezel: Chrome
625 Revs per Kilometer



TACHOMETER

CLASSIC MAGNOLIA

Part No. RVC1690-01CB

Type: Electrical
Range: 0-7000 RPM
Scale: Full
Fitting: Harness
Dia: 80mm
Bezel: Chrome
6 Cyl only



SPEEDOMETER

CLASSIC MAGNOLIA

Part No. SNT5372-20CA

Type: Electronic
Range: 0 - 300 kph
Scale: Full
Fitting: Harness
Dia: 100mm
Bezel: Chrome



TACHOMETER

CLASSIC MAGNOLIA

Part No. RVC1890-01CB

Type: Electrical
Range: 0-7000 RPM
Scale: Full
Fitting: Harness
Dia: 80mm
Bezel: Chrome
8 Cyl only



SPEEDOMETER

CLASSIC MAGNOLIA

Part No. SNT5372-19CB

Type: Electronic
Range: 0 - 220 kph
Scale: Full
Fitting: Harness
Dia: 100mm
Bezel: Chrome



TACHOMETER

CLASSIC MAGNOLIA

Part No. RVC2890-01CB

Type: Electric
Range: 0 - 7,000 rpm
Scale: Full
Fitting: Harness
Dia: 100mm
Bezel: Chrome
8 Cyl only



SPEEDOMETER

CLASSIC MAGNOLIA

Part No. SNT5372-17C

Type: Mechanical
Range: 0 - 270 kph
Scale: Full
Fitting:
Dia: 100mm
Bezel: Chrome
625 revs Kilometer



WATER TEMPERATURE

CLASSIC MAGNOLIA

Part Number: TG1310-02C078

Type: Mechanical
Range: 30-110°C
Scale: Full
Fitting: 3/8BSP
Dia: 52mm
Bezel: Chrome
Comments: Capillary length 78 in.



TACHOMETER

CLASSIC MAGNOLIA

Part No. RVC1006-02CB

Type: Electrical
Range: 0-8000 RPM
Scale: Full
Fitting: Harness
Dia: 80mm Bezel: Chrome
4, 6 or 8 Cyl.
Adjustable redline pointer.
Suits in dash mounting



WATER TEMPERATURE

CLASSIC MAGNOLIA

Part No. BT2240-04C

Type: Electrical
Range: 50-140°C
Scale: Arc
Fitting: Spade
Dia: 52mm
Bezel: Chrome
Use Sender Part No. TT6811-01



Mini Range

Authentic Smiths Instruments as fitted to the original classic mini, skillfully crafted to the original drawings and specifications for the Mini, using original tools and dies.

Choice of black and magnolia dials. Speedo ranges available in MPH or KPH.

Chrome round bezels as per original. Speedo includes a voltage regulator and a fuel gauge.



OIL PRESSURE

MINI

Part No. PL2310-00

Type: Mechanical
Range: 0 - 100 PSI
Scale: Arc
Fitting: 1/8in NPT
Dia: 52mm
Bezel: Chrome
Use Fitting Kit Part No. LK-2



SPEEDOMETER

MINI

Part No. SN4421-33

Type: Mechanical
Range: 20 - 200 kph
Scale: Full
Fitting:
Dia: 132mm
Bezel: Chrome
In-built fuel gauge



OIL PRESSURE

MINI

Part No. PL2310-05

Type: Mechanical
Range: 0 - 100 PSI
Scale: Arc
Fitting: 1/8in NPT
Dia: 52mm
Bezel: Chrome
Use Fitting Kit Part No. LK-2



SPEEDOMETER

MINI

Part No. SN4421-63

Type: Mechanical
Range: 20 - 200 kph
Scale: Full
Fitting:
Dia: 132mm
Bezel: Chrome
In-built fuel gauge



SPEEDOMETER

MINI

Part No. SN4421-32

Type: Mechanical
Range: 10 - 130 mph
Scale: Full
Fitting:
Dia: 132mm
Bezel: Chrome
In-built fuel gauge



WATER TEMPERATURE

MINI

Part No. BT2204-11

Type: Electrical
Range: C - N - H
Scale: Arc
Fitting: Spade
Dia: 52mm
Bezel: Chrome
Use Sender Part No. TT6811-01



SPEEDOMETER

MINI

Part No. SN4421-62

Type: Mechanical
Range: 10 - 130 mph
Scale: Full
Fitting:
Dia: 132mm
Bezel: Chrome
In-built fuel gauge



WATER TEMPERATURE

MINI

Part No. BT2204-31

Type: Electrical
Range: C - N - H
Scale: Arc
Fitting: Spade
Dia: 52mm
Bezel: Chrome
Use Sender Part No. TT6811-01





GT40 Gauges

The GT40 is a motor racing icon that achieved legendary victories at Le Mans. Every GT40 was equipped with gauges from Smiths.

The classic lines of the black bezels, red sector tacho and 200mph speedo shout racer!

Your GT40 project deserves gauges manufactured from the same tooling as the original GT40.

AMMETER

GT40

Part No. AM1640-16B

Type: Electrical
Range: -50 - 0 - 50 Amps
Scale: Arc
Fitting: Spade
Dia: 52mm
Bezel: Black



OIL TEMP

GT40

Part No. TG1301-31B078

Type: Mechanical
Range: 40 - 140°C
Scale: Full
Fitting: 3/8BSP
Dia: 52mm Bezel: Black
Capillary length 78in.
Comes with 3/8BSP to 5/8UNF adaptor



FUEL TANK LEVEL

GT40

Part No. ABF2242-15B

Type: Electrical
Range: E - 1/2 - F
Scale: Full
Fitting: Spade
Dia: 52mm
Bezel: Black
Use sender TB9011KIT
or TB9013KIT



OIL TEMP

GT40

Part No. TG1301-31B120

Type: Mechanical
Range: 40 - 140°C
Scale: Full
Fitting: 3/8BSP
Dia: 52mm
Bezel: Black
Capillary length 120in.
Comes with 3/8BSP to 5/8UNF adaptor



OIL PRESSURE

GT40

Part No. PG1310-09B

Type: Mechanical
Range: 0 - 100 PSI
Scale: Full
Fitting: 1/8in NPT
Dia: 52mm
Bezel: Black
Use Fitting Kit Part No. LK-2



SPEEDOMETER

GT40

Part No. SN3327-00

Type: Mechanical
Range: 200 mph
Scale: Full
Fitting:
Dia: 100mm
Bezel: Black
(1184 turns per mile input)
mph scale only



SPEEDOMETER

GT40

Part No. SN3327-04BB

Type: Electronic Programmable
Range: 320 kph / 200 mph
Scale: Full
Fitting: Harness
Dia: 100mm
Bezel: Black
kmh outer/mpg inner scale



WATER TEMPERATURE

GT40

Part No. TG1301-30B078

Type: Mechanical
Range: 30 - 120°C
Scale: Full
Fitting: 3/8BSP
Dia: 52mm
Bezel: Black
Capillary length 78in.
Comes with 3/8BSP to 5/8UNF adaptor



TACHOMETER

GT40

Part No. RVC2816-04BB

Type: Electrical
Range: 8000 RPM
Scale: Full
Fitting: Harness
Dia: 100mm
Bezel: Black
Red sector 6500 - 7000rpm



WATER TEMPERATURE

GT40

Part No. TG1301-30B120

Type: Mechanical
Range: 30 - 120°C
Scale: Full
Fitting: 3/8BSP
Dia: 52mm
Bezel: Black
Capillary length 120in.
Comes with 3/8BSP to 5/8UNF adaptor



Telemetrix

Smiths Telemetrix range is designed for a modern sporting look with attractive brushed aluminium bezels, cirrus white dials and red pointers creating great clarity for the performance and race car driver.

The Telemetrix range was original equipment on the TVR range of sports cars in the UK. Imbued with the same Smiths quality these gauges provide a sharp update to any cars instruments and would look sensational in any retro-mod update of a classic.



AMMETER

TELEMETRIX

Part No. TAM1-0052-06

Type: Electrical
Range: 60-0-60 Amps
Scale: Arc
Fitting: Spade
Dia: 52mm
Bezel: Silver



OIL PRESS./WATER TEMPERATURE

TELEMETRIX

Part No. TGD1301-64078

Type: Mechanical
Range: 0 - 100 PSI / 90 - 230°F
Scale: Full
Fitting: 1/8in NPT / 3/8BSP
Dia: 52mm Bezel: Silver
Capillary length 78in.
Comes with 3/8BSP to 5/8UNF adaptor. Use LK-1 on Pressure



CLOCK

TELEMETRIX

Part No. TAC1-1052-00

Type: Electrical
Range: 12hour
Scale: Full
Fitting: Spade
Dia: 52mm
Bezel: Silver



FUEL TANK LEVEL

TELEMETRIX

Part No. TFC1-1552-00

Type: Electric
Range: 0 - 1/2 - 1
Scale: Full
Fitting: Spade
Dia: 52mm
Bezel: Silver
Use sender Part No. TB9006Kit or TB9013Kit



FUEL PRESSURE TELEMETRIX

Part No. TFP1-3832-02

Type: Mechanical
Range: 0 - 2 Bar
Scale: Full
Fitting: 1/8in NPT
Dia: 52mm
Bezel: Silver
Use Fitting Kit Part No. LK-2



OIL PRESSURE TELEMETRIX

Part No. TOP1-3832-10

Type: Mechanical
Range: 0 - 10 Bar
Scale: Full
Fitting: 1/8in NPT
Dia: 52mm
Bezel: Silver
Use Fitting Kit Part No. LK-2



FUEL PRESSURE TELEMETRIX

Part No. TFP1-3832-07

Type: Mechanical
Range: 0 - 7 Bar
Scale: Full
Fitting: 1/8in NPT
Dia: 52mm
Bezel: Silver
Use Fitting Kit Part No. LK-2



OIL TEMPERATURE TELEMETRIX

Part No. TOT1-1452-15

Type: Electric
Range: 50 - 150°C
Scale: Arc
Fitting: Spade
Dia: 52mm
Bezel: Silver
Use Sender Part No. TT3005-8N



OIL PRESSURE TELEMETRIX

Part No. TOP1-1552-07

Type: Electric
Range: 0 - 7 Bar
Scale: Arc
Fitting: Spade
Dia: 52mm
Bezel: Silver
Use Sender Part No. PTR3000-8N-10



OIL TEMPERATURE TELEMETRIX

Part No. TOT1-3832-002

Type: Mechanical
Range: 40 - 150°C
Scale: Full
Fitting: 3/8BSP
Dia: 52mm
Bezel: Silver
Capillary length 78inches.
Comes with 3/8BSP to 5/8UNF adaptor.



OIL PRESSURE TELEMETRIX

Part No. TOP1-1552-10

Type: Electric
Range: 0 - 10 Bar
Scale: Arc
Fitting: Spade
Dia: 52mm
Bezel: Silver
Use Sender Part No. PTR3000-8N-14



SPEEDOMETER TELEMETRIX

Part No. TES3-1B32-02

Type: Electrical
Range: 0 - 240 kph
Scale: Full
Fitting: Harness
Dia: 80mm
Bezel: Silver



OIL PRESSURE TELEMETRIX

Part No. TOP1-3832-07

Type: Mechanical
Range: 0 - 7 Bar
Scale: Full
Fitting: 1/8in NPT
Dia: 52mm
Bezel: Silver
Use Fitting Kit Part No. LK-2



SPEEDOMETER TELEMETRIX

Part No. TES3-1B32-03

Type: Electrical
Range: 0 - 280 kph
Scale: Full
Fitting: Harness
Dia: 80mm
Bezel: Silver



SPEEDOMETER

TELEMETRIX

Part No. TES5-1B32-02

Type: Electrical
Range: 0 - 240 kph
Scale: Full
Fitting: Harness
Dia: 100mm
Bezel: Silver



TURBO BOOST

TELEMETRIX

Part No. TMP1-3832-21

Type: Mechanical
Range: -1 to +1.5 Bar
Scale: Full
Fitting: 1/8in NPT
Dia: 52mm
Bezel: Silver



SPEEDOMETER

TELEMETRIX

Part No. TES5-1B32-03

Type: Electrical
Range: 0 - 280 kph
Scale: Full
Fitting: Harness
Dia: 100mm
Bezel: Silver



VOLTMETER

TELEMETRIX

Part No. TV01-1052-02

Type: Electric
Range: 9 - 17 Volts
Scale: Arc
Fitting: Spade
Dia: 52mm
Bezel: Silver



TACHOMETER

TELEMETRIX

Part No. TET3-5B32-00

Type: Electrical
Range: 0 - 8000 RPM
Scale: Full
Fitting: Harness
Dia: 80mm
Bezel: Silver
2, 3 or 4 pulses / rev



WATER TEMP

TELEMETRIX

Part No. TCT1-1452-12

Type: Electrical
Range: 40 - 120°C
Scale: Arc
Fitting: Spade
Dia: 52mm
Bezel: Silver
Use Sender Part No. TT3001-8N



TACHOMETER

TELEMETRIX

Part No. TET5-5B32-00

Type: Electric
Range: 0 - 8000 RPM
Scale: Full
Fitting: Harness
Dia: 100mm
Bezel: Silver
2, 3 or 4 Pulse / rev



WATER TEMP

TELEMETRIX

Part No. TCT1-3832-002

Type: Mechanical
Range: 40 - 150°C
Scale: Full
Fitting: 3/8BSP
Dia: 52mm
Bezel: Silver
Capillary length 78in.
Comes with 3/8BSP to 5/8UNF adaptor.

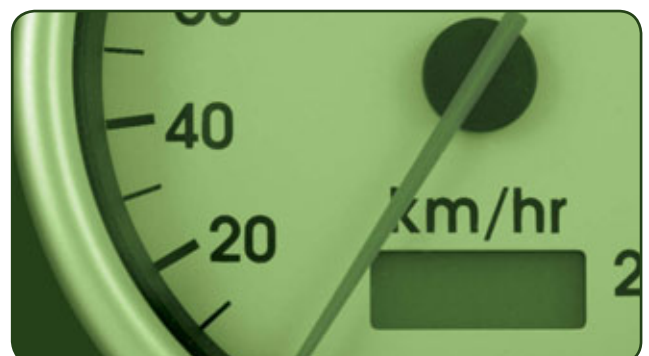


TRANSMISSION OIL TEMPERATURE

TELEMETRIX

Part No. TTT1-1452-15

Type: Electric
Range: 50 - 150°C
Scale: Arc
Fitting: Spade
Dia: 52mm
Bezel: Silver
Use Sender Part No. TT3005-8N



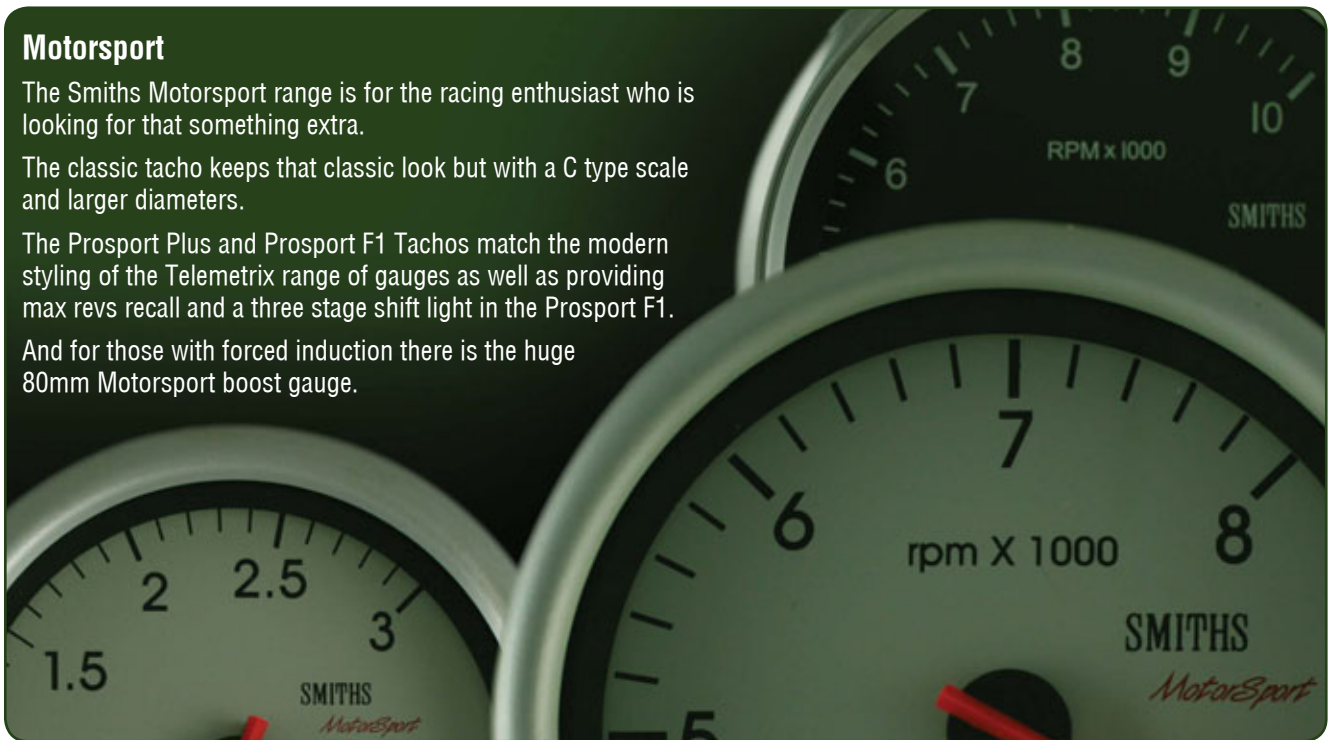
Motorsport

The Smiths Motorsport range is for the racing enthusiast who is looking for that something extra.

The classic tachometer keeps that classic look but with a C type scale and larger diameters.

The ProSport Plus and ProSport F1 Tachometers match the modern styling of the Telemetrix range of gauges as well as providing max revs recall and a three stage shift light in the ProSport F1.

And for those with forced induction there is the huge 80mm Motorsport boost gauge.



TACHOMETER

MOTORSPORT

Part No. RET3-1A32-13

Type: Electrical
Range: 0-8000 RPM
(0 - 3000 compressed)
Scale: Full
Fitting: Harness
Dia: 80mm
Bezel: Silver
ProSport Plus max revs recall



TACHOMETER

MOTORSPORT

Part No. RET5-1A32-14

Type: Electrical
Range: 0-10000 RPM
(0 - 4000 compressed)
Scale: Full
Fitting: Harness
Dia: 100mm
Bezel: Silver
ProSport Plus max revs recall



TACHOMETER

MOTORSPORT

Part No. RET3-1A32-14

Type: Electrical
Range: 0-10000 RPM
(0 - 4000 compressed)
Scale: Full
Fitting: Harness
Dia: 80mm
Bezel: Silver
ProSport Plus max revs recall



TACHOMETER

MOTORSPORT

Part No. RET3-1A32-19

Type: Electrical
Range: 0-8000 RPM
(0 - 3000 compressed)
Scale: Full
Fitting: Harness
Dia: 80mm
Bezel: Silver
ProSport F1 shift lamps & max revs recall



TACHOMETER

MOTORSPORT

Part No. RET5-1A32-13

Type: Electrical
Range: 0-8000 RPM
(0 - 3000 compressed)
Scale: Full
Fitting: Harness
Dia: 100mm
Bezel: Silver
ProSport Plus max revs recall



TACHOMETER

MOTORSPORT

Part No. RET3-1A32-20

Type: Electrical
Range: 0-10000 RPM
(0 - 4000 compressed)
Scale: Full
Fitting: Harness
Dia: 80mm
Bezel: Silver
ProSport F1 shift lamps & max revs recall



TACHOMETER

MOTORSPORT

Part No. RET5-1A32-19

Type: Electrical
Range: 0-8000 RPM
(0 - 3000 compressed)
Scale: Full
Fitting: Harness
Dia: 100mm Bezel: Silver
Prosport F1 shift lamps
max revs recall



TACHOMETER

MOTORSPORT

Part No. RET5-1A32-02

Type: Electrical
Range: 0 - 10000 RPM
Scale: Full
Fitting: Harness
Dia: 100mm
Bezel: Chrome
Classic Range



TACHOMETER

MOTORSPORT

Part No. RET5-1A32-20

Type: Electrical
Range: 0-10000 RPM
(0 - 4000 compressed)
Scale: Full
Fitting: Harness
Dia: 100mm Bezel: Silver
Prosport F1 shift lamps
max revs recall



TURBO BOOST

MOTORSPORT

Part No. RMP3-3832-01

Type: Mechanical
Range: -1 to +3 Bar
Scale: Full
Fitting: 1/8in NPT
Dia: 80mm
Bezel: Silver



TACHOMETER

MOTORSPORT

Part No. RET3-1A32-01

Type: Electrical
Range: 0 - 8000 RPM
Scale: Full
Fitting: Harness
Dia: 80mm
Bezel: Chrome
Classic Range



TACHOMETER

MOTORSPORT

Part No. RET3-1A32-02

Type: Electrical
Range: 0 - 10000 RPM
Scale: Full
Fitting: Harness
Dia: 80mm
Bezel: Chrome
Classic Range

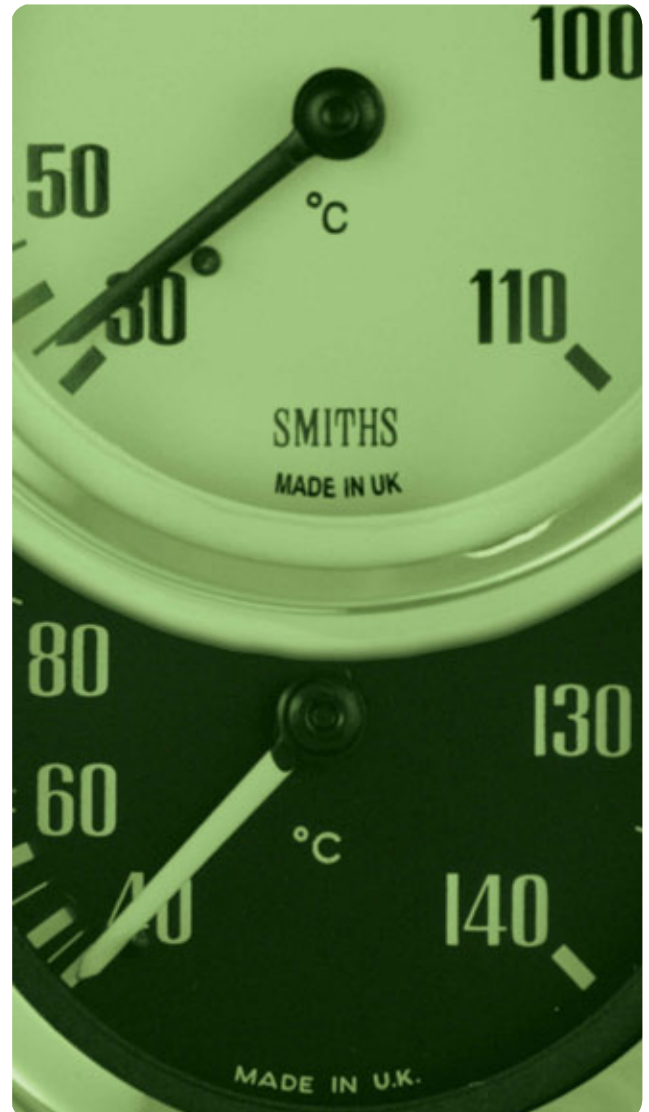


TACHOMETER

MOTORSPORT

Part No. RET5-1A32-01

Type: Electrical
Range: 0- 8000 RPM
Scale: Full
Fitting: Harness
Dia: 100mm
Bezel: Chrome
Classic Range



Redline Race Gauges

Redline Race Gauges are manufactured from the finest materials by a quality assured company to OEM standards.

- Accuracy is guaranteed
- Backlit lighting with bright oranges fluorescent pointers gives a clear reading for night driving
- 2 5/8" gauges are suitable for in dash or pod mounting
- Silver face, easy to read markings, attractive brushed silver bezel.



TACHOMETER

RACE GAUGE

Part No. 510-10

Type: Electrical
Range: 0-10,000 RPM
Scale: Full
Fitting: Harness
Dia: 5in
Bezel: Silver
With internal shift light



FUEL LEVEL

RACE GAUGE

Part No. 258-25

Type: Electrical
Range: E-1/2-F
Scale: Arc
Fitting: Post & Nut
Dia: 2 5/8in
Bezel: Silver
Use Sender Part No. 301095



TACHOMETER

RACE GAUGE

Part No. 510-11

Type: Electrical
Range: 0-10,000 RPM
Scale: Full
Fitting: Harness
Dia: 5in
Bezel: Silver
With external pencil shift light



FUEL PRESSURE

RACE GAUGE

Part No. 258-19

Type: Mechanical
Range: 0-16 PSI
Scale: Full
Fitting: 1/8in NPT
Dia: 2 5/8in
Bezel: Silver
Use Fitting Kit Part No. LK-1



AMMETER

RACE GAUGE

Part No. 258-17

Type: Electrical
Range: 60-0-60 Amps
Scale: Arc
Fitting: Post & Nut
Dia: 2 5/8in
Bezel: Silver



OIL PRESSURE

RACE GAUGE

Part No. 258-10

Type: Mechanical
Range: 0-100 PSI
Scale: Full
Fitting: 1/8in NPT
Dia: 2 5/8in
Bezel: Silver
Use Fitting Kit Part No. LK-1



BOOST/VACUUM

RACE GAUGE

Part No. 258-27

Type: Mechanical
Range: 0-30 inHg, 0-30 PSI
Scale: Full
Fitting: 1/8in NPT
Dia: 2 5/8in
Bezel: Silver
Use Fitting Kit Part No. LK-1



OIL PRESSURE

RACE GAUGE

Part No. 258-11

Type: Electrical
Range: 0-100 PSI
Scale: Arc
Fitting: Post & Nut
Dia: 2 5/8in
Bezel: Silver
Use Sender Part No. 400083



TURBO BOOST RACE GAUGE

Part No. 258-29

Type: Mechanical
 Range: 0-30 PSI
 Scale: Full
 Fitting: 1/8in NPT
 Dia: 2 5/8in
 Bezel: Silver
 Use Fitting Kit Part No. LK-1



WATER TEMPERATURE RACE GAUGE

Part No. 258-15

Type: Electrical
 Range: 100-250°F
 Scale: Arc
 Fitting: Post & Nut
 Dia: 2 5/8in
 Bezel: Silver
 Use Sender Part No. 400389



VACUUM RACE GAUGE

Part No. 258-28

Type: Mechanical
 Range: 0-30 inHg
 Scale: Full
 Fitting: 1/8in NPT
 Dia: 2 5/8in
 Bezel: Silver
 Use Fitting Kit Part No. LK-1



VOLTMETER RACE GAUGE

Part No. 258-18

Type: Electrical
 Range: 8-16 Volts
 Scale: Arc
 Fitting: Post & Nut
 Dia: 2 5/8in
 Bezel: Silver



WATER TEMPERATURE RACE GAUGE

Part No. 258-13

Type: Mechanical
 Range: 100-240°F
 Scale: Full
 Fitting: 1/8in NPT
 Dia: 2 5/8in
 Bezel: Silver
 Capillary length 1600mm



WATER TEMPERATURE RACE GAUGE

Part No. 258-14

Type: Mechanical
 Range: 100-240°F
 Scale: Full
 Fitting: 1/8in NPT
 Dia: 2 5/8in
 Bezel: Silver
 Capillary length 2600mm



GAUGE PODS/PANELS

Part No. 304501

Pod to suit capillary 52mm (2in) gauge. Chrome.

Part No. 304502

Pod to suit capillary 52mm (2in) gauge. Black.

Part No. 304503

Pod to suit non-capillary 52mm (2in) gauge. Chrome.

Part No. 304504

Pod to suit non-capillary 52mm (2in) gauge. Black.

Part No. 304505

Pod to suit capillary 66mm (2 5/8in) gauge. Chrome.

Part No. 304506

Pod to suit capillary 66mm (2 5/8in) gauge. Black.

Part No. 304507

Pod to suit non-capillary 66mm (2 5/8in) gauge. Chrome.

Part No. 304508

Pod to suit non-capillary 66mm (2 5/8in) gauge. Black.

Part No. 304509

Pod to suit 85mm Tachometers. Chrome

Part No. 304510

Pod to suit 85mm Tachometers. Black.

Part No. 400-21

Tachometer mounting bracket to suit Smiths Gauge.

Part No. 400-25

Silver Anodised to suit 80mm Smiths Tachometer.

Part No. 400-1

Single hole panel. Black.

Part No. 400-2

Two hole panel. Black.

Part No. 400-3

Three hole panel. Black.



Redline Marine Gauges

Redline Marine gauges are built to withstand one of the harshest environments that can be asked of any gauge.

Redline marine gauges features:

- Oil filled workings to eliminate needle bounce
- Dome (convex) glass for wider viewing angle, treated with anti fog solution and are tested to OEM Marine Standard of -32°C without fogging.
- Bezels are manufactured from brass, and coloured white.
- Cases are made from glass fibre & polyester.



ENGINE HOURS

MARINE

Part No. MA-17

Type: Electric
Range: 0.1 - 99999.9 hours
Scale:
Fitting: Post & Nut
Dia: 52mm
Bezel: White



TACHOMETER

MARINE

Part No. MA-20

Type: Electric
Range: 0-6,000 RPM
Scale: Full
Fitting: Post & Nut
Dia: 85mm
Bezel: White
4, 6 or 8cyl



FUEL TANK LEVEL

MARINE

Part No. MA-15

Type: Electric
Range: E-1/2-F
Scale: Arc
Fitting: Post & Nut
Dia: 52mm
Bezel: White
Use Tank Sender Part No. MA-16



TRIM

MARINE

Part No. MA-18

Type: Electric
Range: Up - Down
Scale: Arc
Fitting: Post & Nut
Dia: 52mm
Bezel: White



PITOT SPEEDOMETER

MARINE

Part No. MA-19

Type: Mechanical
Range: 0-80 mph / 70 Knots
Scale: Full
Fitting: 1/8in Barb
Dia: 85mm
Bezel: White
Use Pitot Kit Part No. MA-21

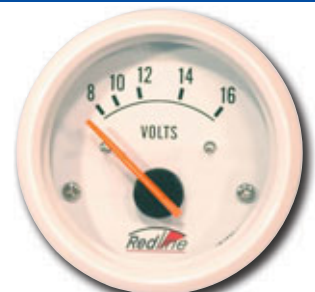


VOLTMETER

MARINE

Part No. MA-14

Type: Electric
Range: 8-16 Volts
Scale: Arc
Fitting: Post & Nut
Dia: 52mm
Bezel: White



OIL PRESSURE

MARINE

Part No. MA-10

Type: Electric
Range: 0-100 PSI / 700 kPa
Scale: Arc
Fitting: Post & Nut
Dia: 52mm
Bezel: White
Use Pressure Switch Part No. MA-11



WATER TEMPERATURE

MARINE

Part No. MA-12

Type: Electric
Range: 0-240°F / 120°C
Scale: Arc
Fitting: Post & Nut
Dia: 52mm
Bezel: White
Use Temp Sender Part No. MA-13



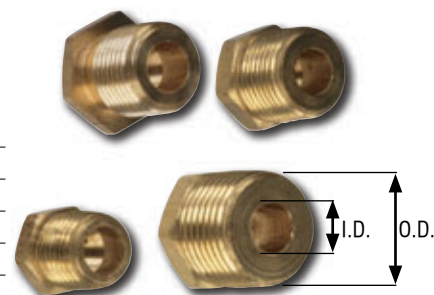
SENSORS

Part No.	Range	Voltage	Comment
400083	10-97 ohms	12V	Suits Electric Oil Pressure Gauges
400389		12V	Suits Electric Temp. ° F and ° C Gauges
400263		12V	Suits Temp lamps as used in Holden FE-WB & LC to UC 6cyl/V8 applications
400354		12V	Suits Temp Gauges as used in Holden V8 applications
MA-11			Oil pressure switch Redline Marine Gauges
MA-13			Temperature Sender Redline Marine Gauges



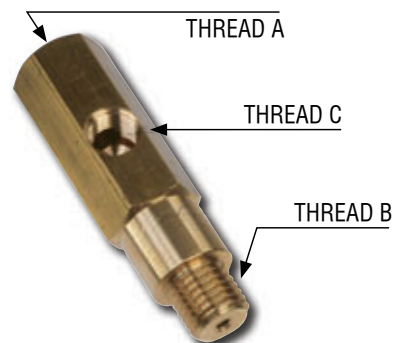
WATER TEMPERATURE ADAPTORS

Part No.	OD Size	ID Size
024-0402NPT	1/4" NPT	1/8" NPT
024-0602NPT	3/8" NPT	1/8" NPT
024-0802NPT	1/2" NPT	1/8" NPT
024-016M	M16	1/8" NPT
024-1002NPT	5/8" UNF	1/8" NPT
024-001NPT	Original replacement - water temperature adaptor for capillary gauge	



OIL GAUGE - ENGINE BLOCK ADAPTORS (T PIECE)

Part No.	Thread A	Thread B	Thread C
RGA-31	1/8" - 27NPTF	1/8" - 27NPTF	1/8" - 27NPTF
RGA-32	1/4" - 18NPTF	1/4" - 18NPTF	1/8" - 27NPTF
RGA-33	M10 x 1	M10 x 1	1/8" - 27NPTF
RGA-34	M12 x 1.5	M12 x 1.5	1/8" - 27NPTF
RGA-35	M14 x 1.5	M14 x 1.5	1/8" - 27NPTF
RGA-36	1/8" - 28BSPT	1/8" - 28BSPT	1/8" - 27NPTF



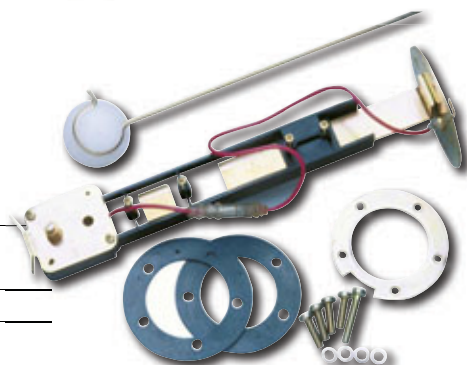
OIL FITTING KITS

Part No.	Comment	Length
LK-1	3/16" dia. Nylon pressure line kit - Pricol	2 metre (6'6")
LK-2	3/16" dia. Nylon pressure line kit - Smiths	2 metre (6'6")
F1000-03	3/16" dia. Nylon pressure line purchased per metre	
A10-0302N	3/16" x 1/8" NPT suit gauge - Female	
A3-0302N	3/16" x 1/8" NPT suit block - Male	



TANK SENDER UNIT

Part No.	Range	Voltage	Comments
301095	8-186 ohms	12V	Sender suits Pricol 301829 & 303592 gauges and Redline 258-25 gauges
MA-16			Tank Sender Unit Redline Marine Gauges



TEMPERATURE ADAPTORS

<i>Vehicle</i>	<i>Model</i>	<i>Oil Gauge Adaptor</i>	<i>Temperature Adaptor</i>
Alfa	Alfasud & Alfetta	RGA-35	
BMW	Most Models	RGA-34	
Chrysler	Valiant 6/V8 cyl	RGA-31	
Chevrolet	Equipped w/small block V8 engines	RGA-32	024-0802NPT
Daihatsu	Charade	RGA-36	
Datsun	All Models	RGA-36	
Fiat	127, 133, 805	RGA-34	
	124, 125, 128, 130, X1/9	RGA-35	024-016M
Ford	Cortina	RGA-32	
	Escort	RGA-32	
	Falcon XK-XE 6cyl.	RGA-32	024-0402NPT
	Falcon XR-XE V8	RGA-32	024-0602NPT
	Laser, Meteor	RGA-36	024-016M
	Telstar	RGA-36	024-016M
	Bronco, F100, F250, F350	RGA-32	024-0602NPT
	Courier, Econovan, Spectron	RGA-36	024-016M
GMH	Astra LB, LC	RGA-36	
	Astra LD	RGA-35	
	Barina	RGA-36	
	Camira	RGA-35	
	Commodore (Starfire), Sunbird, Torana 1.9L	RGA-32	
	Commodore, Torana (red, blue, black 6cyl engine)	RGA-32	024-0802NPT
	Commodore VL (Nissan Engine)	RGA-36	
	Drover	RGA-37	
	Gemini	RGA-36	024-016M
	Holden EH-HZ 6cyl engine	RGA-32	024-0802NPT
	Holden all models V8 253-308	RGA-32	
	Jackaroo, Rodeo, Shuttle	RGA-36	024-016M
Hillman	Avenger, Hunter	RGA-31	024-1002NPT
Honda	Accord, Civic, Prelude	RGA-36	024-016M
Isuzu	KB25, 40	RGA-36	024-016M
Leyland	Austin, Mini-all, Marina	RGA-31	024-1002NPT
	P76	RGA-32	
Mazda	All models except Rotary	RGA-36	
Mitsubishi	All models	RGA-36	
Nissan	All models except locally built Pulsars	RGA-36	024-016M
	Pulsar - Australian built	RGA-35	
Renault	All models except R30	RGA35	
SAAB	96L & 99 series - all models	RGA-36	
Subaru	Most Models	RGA-36	024-016M
Suzuki	All Models	RGA-36	024-016M
Toyota		RGA-36	024-016M
Triumph		RGA-31	024-1002NPT
Volvo	144, 164, 242, 245, 264	RGA-31	024-1002NPT
VW	Beetle, Type 3, Golf, Passat	RGA-33	

TEMPERATURE GAUGE FITTING KITS

<i>Part No.</i>	<i>Description</i>	<i>Comment</i>
TT3001-8N	Sender	Water Temp Sender suit Smiths Telemetrix
TT3005-8N	Sender	Oil Temp Sender suit Smiths Telemetrix
TA9110-000	Sender	Fuel Sender, Top Mount, 5 hole flange suit Smiths Telemetrix
TT6811-01	Sender	90°C - 68 ohms; 120°C - 29ohms; 140°C - 19ohms
BA-0376UNF	Adaptor	5/8" UNF Male x 3/8" NPT Male
BA-0377UNF	Adaptor	5/8" UNF Male x 3/8" BSPT Male
BA1010UNF	Adaptor	5/8" UNF Female x 5/8" UNF Male
BA-08N10UNF	Adaptor	1/2" NPT Male x 5/8" UNF Male
BA-0608N	Adaptor	3/8" BSP Male x 1/2" NPT Male

OIL GAUGE FITTING KITS

<i>Part No.</i>	<i>Comment</i>	<i>Length</i>
LK-2	3/16" dia. Nylon pressure line kit	2 metre (6'6")
F1000-03	3/16" dia. Nylon pressure line purchased per metre	
A10-0302N	3/16" x 1/8"NPT suit gauge - Female	
A3-0302N	3/16" x 1/8"NPT suit gauge - Male	

FUEL TANK SENDER - ELECTRIC - VARIABLE LENGTH

<i>Part No.</i>	<i>Comment</i>
TB9006Kit	Top Mount
TB9013Kit	Side Mount
TFS9915-000R	Mini

Note 1: When tank is FULL the resistance should be between 16-22 ohms @ 24°C, HALF the resistance should be between 82-98 ohms @ 24°C, EMPTY the resistance should be between 237-273 ohms @ 24°C Note 2: These transducers are only compatible with Smiths Classic and Cobra gauges.

VOLTAGE REGULATOR

<i>Part No.</i>	<i>Comment</i>
BRE 1307-00	For use with 1 to 3 Smiths Electrical Gauges only (Negative Earth vehicles only)

Note: These transducers are only compatible with Smiths Classic and Cobra gauges.

REPLACEMENT CABLE FOR SPEEDOMETER

<i>Part No.</i>	<i>Comment</i>
41-741-176-000	Replacement reset cable for tripmeter SN5234-05C & SN5234-09C

OIL PRESSURE SWITCH

<i>Part No.</i>	<i>Comment</i>
PTR1810-1-10	0-100 psi for use with Smiths Oil Pressure Gauges Only. PTR1810-1-10 when checking/testing the resistance of this unit - below 20 psi - the unit is open circuit; @ 20psi - 172 to 160ohms; @ 50psi - 90 to 105ohms; @ 80psi - 48 to 55ohms; @ 100psi - 40 to 44ohms
PTR3000-8N-10	Oil Pressure Sender 7 BAR suit Smiths Telemetrix
PTR3000-8N-14	Oil Pressure Sender 10 BAR suit Smiths Telemetrix
PTR1000-6-10	Cobra Oil Pressure Sender

Note: These transducers are only compatible with Smiths Classic and Cobra gauges.

TERMS OF SALE
Limited warranty and liability

The goods sold hereunder are warranted to be free at the time of shipment of defects in material and workmanship subject to the following provisions. Every claim on account of defective goods, short count or any other causes shall be deemed waived by the purchaser, unless made in writing within seven (7) days from receipt of the goods to which such a claim relates. Goods claimed to be defective may be returned to the seller after inspection by the seller and upon the receipt of written instructions from the seller. Goods so returned and found to have been defective at the time of shipment will be replaced or repaired by the seller without charge, but the seller shall not be liable for any loss of business, consequential damages or any other expense, loss or damage incurred by the purchaser or any other entity, whether directly or indirectly arising out of the goods sold hereunder. Seller's liability hereunder is expressly limited to the replacement or repair of defective goods returned to it in the manner provided above. The foregoing warranty shall be in lieu of and excludes all other warranties, express or implied, which are hereby expressly disclaimed. Above warranty only applies to goods, not freight (see Freight Terms).

Changes in prices

All prices are subjected to change without notice. Advance notice of price changes will be given whenever possible. There is no obligation to comply with suggested list prices or pre-discounted prices.

Accounts

- (1) The discounted price shown on invoices is only valid if the invoice is paid within our 30 day trading terms otherwise goods will be re-invoiced at pre-discounted prices plus GST.
- (2) All prices listed are based on a strictly nett 30 day trading account.
- (3) All accounts which exceed 60 days are subjected to 1.5% per month service charge until paid.
- (4) All costs incurred including legal cost, service charges or any other expenses entailed in recovering the debt will be added to the outstanding amount.
- (5) If the invoice is marked with a settlement discount if paid within a set time, then your invoice can be adjusted if paid in this time. Please write invoice number you are paying on the back of your cheque.
- (6) No discount allowed on invoices of face value under \$25.00.

Credit Returns

- (1) Goods returned must be in resalable condition and freight paid by purchaser.
- (2) Invoice number, date of purchase quoted and reason for return.

(3) Credits must not be deducted from your account until official credit note issued.

(4) All goods returned will be subject to a 20% restocking charge with the exception of faulty goods. It takes time to parcel up, invoice, then dispatch goods, so make sure you order the correct item or take a deposit from your customer.

(5) All sales are final and goods will not be accepted for return after 30 days.

(6) Invoices marked not returnable for credit, will not be accepted for return under any circumstances.

Warning

Certain state laws and regulations make the fitting of some motor accessories and performance equipment illegal on certain model cars, other than those used for racing or off-road purposes. It is your responsibility to ensure that goods you are purchasing or selling can be legally fitted to the intended vehicle.

Freight

Customers, we do not pay freight and insurance charges as these costs are not included in the sale price of these goods. Freight of all goods are at the purchaser's risks. Sydney customers, we will dispatch your goods where possible by the cheapest delivery service and add the cost to your invoice. All goods become customers responsibility on removal or dispatch from our premises. Hardiman Auto Supplies will not insure goods unless confirmed in writing. Any insurance on goods is at the customer's expense. Any claims for damages incurred in transit must be handled directly by your company with the carrier concerned. All manufacturer's names, numbers, symbols or descriptions are for reference purposes only and are not intended to imply that the products are of that manufacture. All claims made by overseas manufacturers as to the performance of their products are not necessarily upheld by our company.

Placement of orders

If your order is phoned, faxed or emailed into our warehouse, please state part numbers. If part numbers are not stated, our company will not be responsible for any incorrect goods where only description is given.

Product changes

Due to constant product modification and updating, specifications may vary on some products.

Copyright

The contents of this publications are copyright and cannot be reproduced without written permission from Hardiman Auto Supplies Pty Ltd A.B.N 22 114 752 564

Redline

PERFORMANCE



Hardiman Auto Supplies Pty Ltd

ACN 114 752 564 ABN 22 114 752 564

9 Bullecourt Avenue, Milperra NSW 2214, PO Box 63, Panania NSW 2213

Telephone: (02) 8723 8888 Facsimile: (02) 9771 2176 Email: sales@redlineauto.com.au Web: www.redlineauto.com.au

DISTRIBUTED BY

