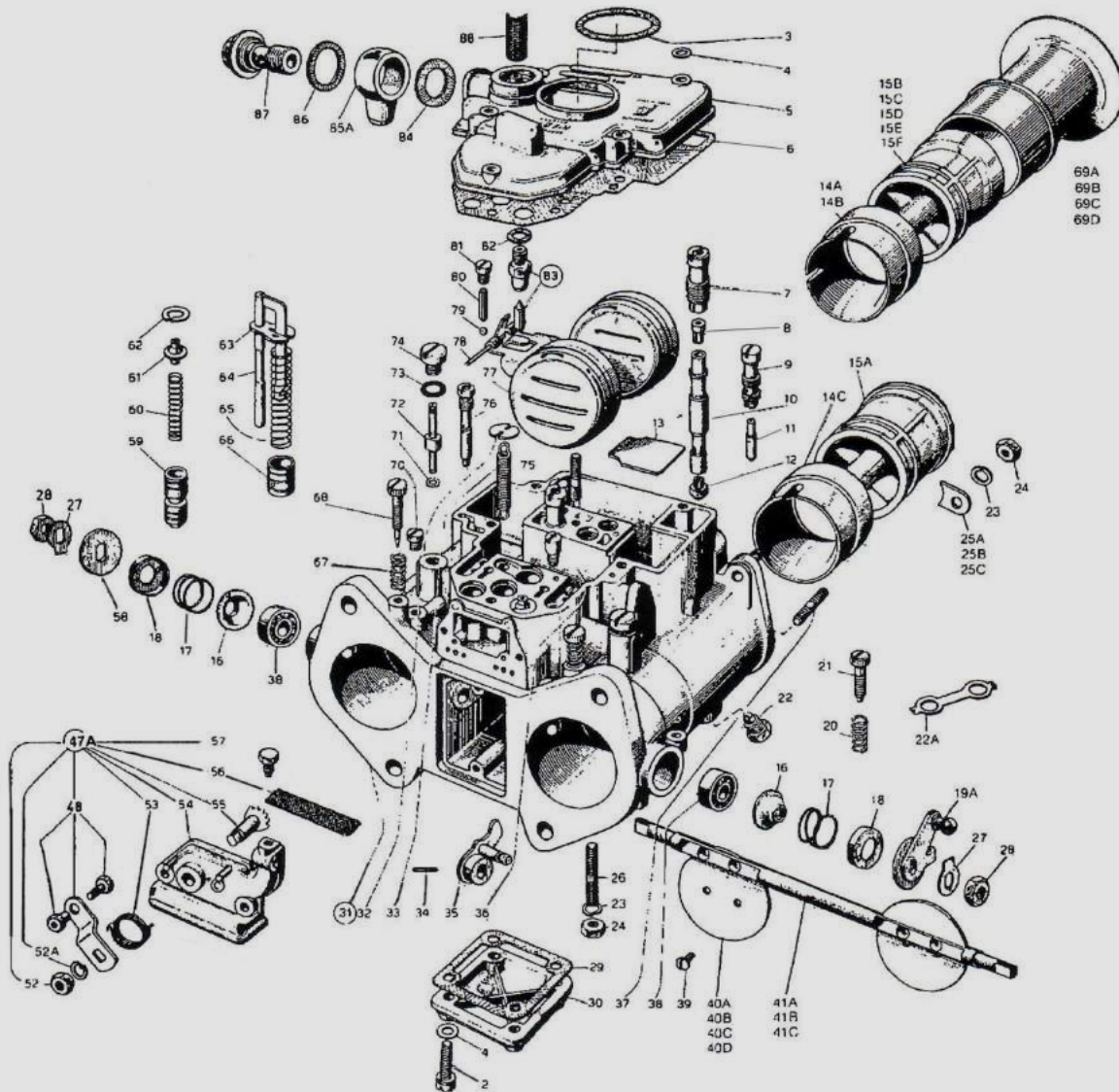




AUTOPARTS

Metering & Service Parts

ILLUSTRATED BUYER'S GUIDE



LOCAL SERVICE. WORLD-CLASS QUALITY.

WEBER METERING AND SERVICE PARTS

CARBURETTOR	40DCOE Early Series	40DCOE 151 Late Series	40IDF 28, 29	40IDF 13, 15	48IDA
	45DCOE Early Series	45DCOE 152 Late Series	44IDF	40IDF 19	
TYPE					

Note: Part number SERIES only are shown below. Refer over for sizes available and complete part number examples for ordering purposes.

ITEM

Repair Kit - Gasket Set	92.0015.05 / WE805	92.0178.05 / WE805	WE834	WE834	92.0034.05
Venturi Series	72302 (40DCOE)	72302 (40DCOE)	71507	71506	72128
	72116 (45DCOE)	72116 (45DCOE)			
AUX Venturi Series	70001, 70003 (40DCOE)	70001, 70003 (40DCOE)	71102	69002 (40IDF 13, 15)	69009.450
	69602, 69904 (45COE)	69602, 69904 (45COE)		69011 (40IDF 19)	
Idle Jet Series	74815, 74821, 74822	74815, 74821, 74822	74405	74405	74823
Pump Jet Series	76801	76801	76210	76210	76402 early brass 76407 late alloy
Pump Check Series	79701	79701	64290.016	64290.016	64290.003
Main Jet Series	73401	73401	73401	73401	73401
Emulsion Tube Series	61450	61450	61450	61450	61450
Air Correction Series	77401	77401	77401	77401	77401
Needle Valve (OEM)	79503	79503	79507 or 79511	79511	79504
Needle Valve (CDL)	WE805NS	WE805NS	WE800NS	WE800NS	N/A
Pump Diaphragm (OEM)	N/A	N/A	47407.027	47407.027	N/A
Float (Brass)	41030.005	N/A	N/A	N/A	41015.007
Float (Nitrile)	N/a	41030.034	41030.008	41030.008	N/A

WEBER METERING AND SERVICE PARTS

CARBURETTOR	34ICH	34ADM	28/36DCD	32/36DGVSA	32/36DGAV	38DGAS7A
TYPE					32/36DGEV	

Refer over for sizes available and complete part number examples for ordering purposes.

ITEM

Repair Kit	WE801	WE844X	WE804	WE800	WE800X, WE803X	WE824X
Venturi (Series)	FIXED	FIXED	71701, 71702	FIXED	FIXED	FIXED
AUX. Venturi Series	NA	70508	69001	71111	71111	NA
Idle Jet Series	74409	74409	74401	74403	74403	74403
Pump Jet Series	76407	76407	76203	76226	76226	76212
Pump Check Series	NA	NA	NA	64290.024	64290.024	64290.024
Main Jet Series	73801	73801	73801	73801	73801	73801
Emulsion Tube Series	61440	61440	61455	61440	61440	61440
Air Correction Series	77201	77201	77502	77201	77201	77201
Power Valve Diaphragm	47407.173	47407.233	NA	57804.052/ HYP56	57804.097 / HYP56	57804.025 / HYP56
Needle Valve Series	79507.200	79507.200	79507	79507.200	79507.200	79507.250
Needle Valve (CDL)	WE800NS	WE800NS	WE800NS	WE800NS	WE800NS	WE800NS
Pump Diaphragm (OEM)	47407.016	47407.146	NA	47407.048	47407.048	47407.048
Pump Diaphragm (CDL)	WE802PP	WE844PP	NA	WE800PP	WE800PP	WE800PP
Secondary Pump Diaphragm (OEM)	NA	47407.163	NA	NA	47407.115	NA
Secondary Pump Diaphragm (CDL)	NA	WE844AD	NA	NA	WE800AD	NA
Float (Brass)	41015.011	41015.004	41030.011	41030.019	43030.019	41030.019
Float (Nitrile)	NA	41020.004	NA	41030.022	41030.022	41030.022
Choke Pull-Off Diaphragm (OEM)	NA	47407.226	NA	NA	47407.056 / 47407.162	47407.093
Choke Pull-Off Diaphragm (CDL)	NA	WE844CP	NA	NA	WE803CP/ WE800CP	NA
Choke Unit Electric	NA	57804.333	NA	NA	57804.333	57804.094
Choke Unit Water	NA	NA	NA	NA	32444.005	NA

FUEL SYSTEM MANUAL

48 IDA WEBER

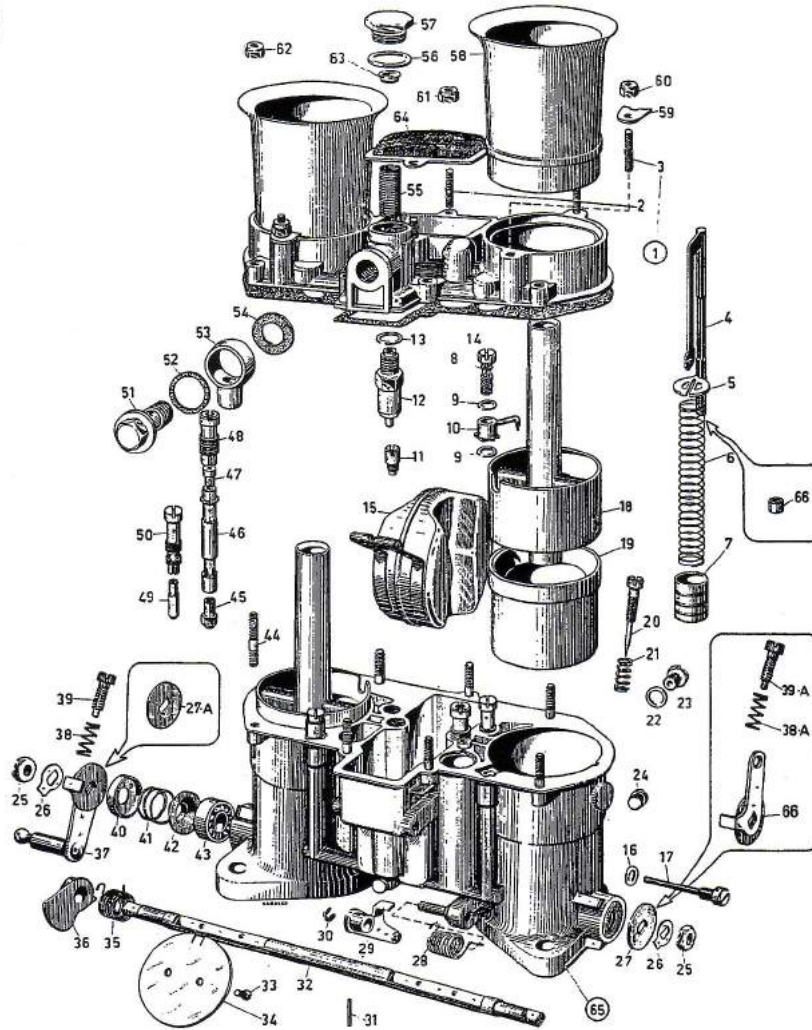


Fig.	Qty	Description	Code
1	1	Carburettor Top Cover	31716.056
2	1	Stud	64955.009
3	4	Stud	64955.003
4	1	Pump Rod	10410.021
5	1	Spring Retaining Clip	52140.007
6	1	Pump Spring	47600.103
7	1	Pump Plunger	58602.005
8-E	2	Pump Demand Valve	64290.003
8-L	2	Pump Demand Valve	64290.005
9-E	4	Pump Jet Washer	41530.012
9-L	2	Pump Jet 'O' Ring	41565.001
10-E	2	Pump Jet	76402.050
10-L	2	Pump Jet	76407.050
11	1	Pump Spill	79701.000
12	1	Needle Valve	79504.200
13	1	Needle Valve 'O' Ring	41530.032
14	1	Top Cover Gasket	41705.021
15	1	Float	41015.007
16	1	O' Ring	41530.017
17	1	Float Spindle	64900.012
18	2	Auxiliary Venturi	69009.450
19	2	Venturi (Choke Tube)	72128.370
20	2	Idle Mixture Screw	64750.007
21	2	Idle Mixture Screw Spring	47600.007
22	1	O' Ring	41530.008
23	1	Threaded Cover	61002.006

Fig.	Qty	Description	Code
24	2	Progression Hole Inspection Cover	61015.001
25	2	Throttle Spindle Nut	34710.003
26	2	Lock Washer	55520.004
27	1	Washer	55555.010
28	1	Throttle Return Spring	47610.066
29	1	Pump Lever	45034.074
30	1	Spring Washer	10140.502
31	1	Pin	58445.001
32	1	Throttle Spindle	10005.436
33	4	Throttle Spindle Screws	64570.006
34	2	Throttle Valves	64005.091
35	1	Throttle Return Spring	47610.067
36	1	Cam	14852.001
37	1	Throttle Lever	NLA
38	1	Throttle Stop Screw Spring	47600.007
39	1	Throttle Stop Screw	64590.002
40	2	Compression Spring Cover	58000.007
41	2	Compression Spring	47600.063
42	2	Dust Cap	41570.001
43	2	Roller Bearing	32650.001
44	7	Stud	64955.012
45	2	Main Jet	73401.135
46	2	Emulsion Tube	61450.091
47	2	Air Corrector Jet	77401.120

Fig.	Qty	Description	Code
48	2	Emulsion Tube Holder	52580.001
49	2	Idle Jet	74823.070
50	2	Idle Jet Holder	77903.120
51	1	Fuel Rail Bolt	12715.008
52	1	Gasket	41530.024
53	1	Fuel Banjo	10354.001
54	1	Gasket	41530.031
55	1	Fuel Filter Element	37020.002
56	1	Fuel Filter Cover Gasket	41530.024
57	1	Fuel Filter Cover	61002.010
58	2	Air Horn	52840.027
59	4	Air Horn Fixing Tab	52150.015
60	4	Air Horn Fixing Tab Nut	34725.003
61	2	Gauze Cover Nut	34725.003
62	7	Carburettor Top Cover Nut	34725.003
63	1	Filter Locating Ring	NLA
64	1	Gauze Cover	37012.004
65	1	Pump Rod Bush	12750.077
66	1	Lever W/O Ball	45032.056

E - Early carburettor
L - Late carburettor

FUEL SYSTEM MANUAL

40 IDF—(Late Model) WEBER

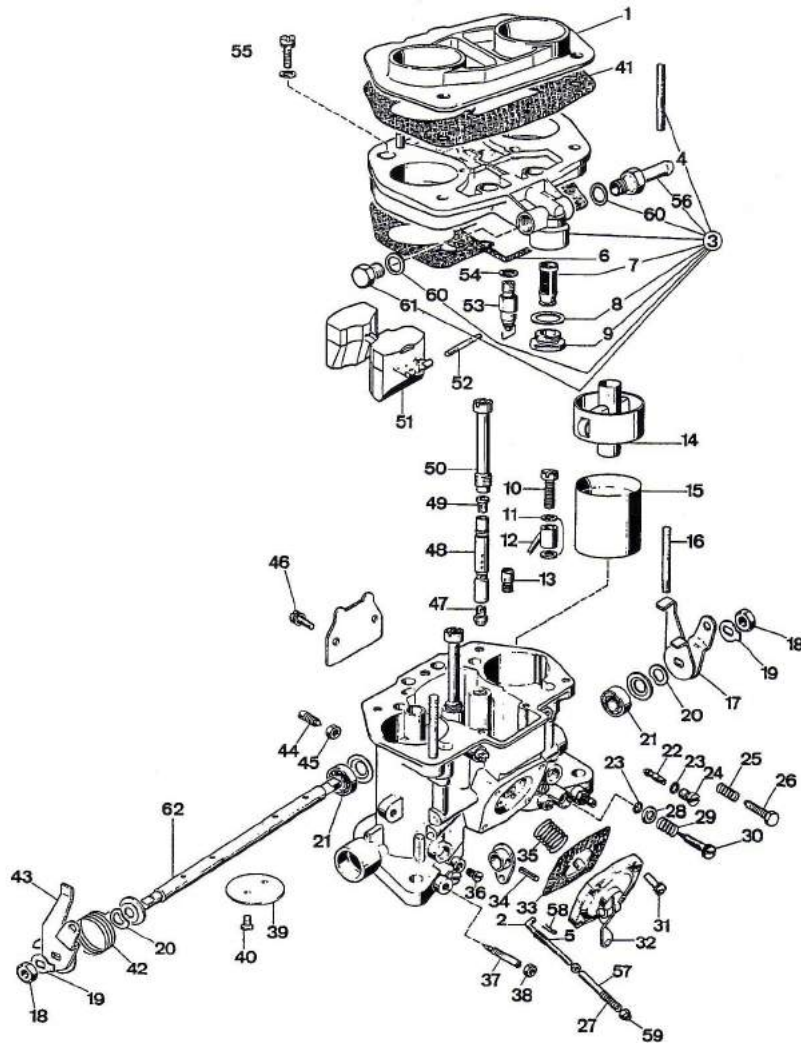


Fig.	Qty	Description	Code
1	1	Air Horn	52848.003
2	1	Pump Control Rod	61285.042
3	1	Carburettor Top Cover	93.0078.05
4	2	Stud	64955.108
5	1	Pump Rod Spring	47600.252
6- E	1	Carburettor Main Gasket	41705.032
6- L	1	Carburettor Main Gasket	41705.085
7	1	Fuel Filter	37022.002
8	1	Fuel Filter Gasket	41530.024
9	1	Fuel Filter Cover	61002.010
10	2	Pump Demand Valve	64290.016
11	4	Pump Jet Gasket	41530.012
12	2	Pump Jet	76210.050
13	1	Pump Spill	79701.055
14	2	Auxiliary Venturi	69002.450
15	2	Venturi (Choke Tube)	71506.280
16	2	Stud	64955.114
17	1	Throttle Lever	45034.110
18	2	Throttle Spindle Nut	34710.003
19	2	Lock Washer	55520.004
20	2	Spring Ring	55530.005
21	2	Race Bearing	32650.003
22	2	Idle Jet	74405.050
23	4	Idle Jet 'O' Ring	41565.002
24	2	Idle Jet Holder	52570.006
25	1	Throttle Stop Screw Spring	47600.007
26	1	Throttle Stop Screw	64625.015

Fig.	Qty	Description	Code
27	1	Pump Rod Spring	47600.251
28	2	Mixture Screw 'O' Ring Cap	58000.006
29	2	Mixture Screw Spring	47600.062
30	2	Mixture Screw	64750.003
31	4	Pump Cover Screw	64700.004
32	1	Pump Cover	32486.085
33- E	1	Pump Diaphragm	47407.027
33- L	1	Pump Diaphragm	47407.207
34	1	Fixing Pin	58445.001
35	1	Pump Diaphragm Spring	47600.250
36	2	Vacuum Take-Off Cover	61015.005
37	2	Air By-Pass Screw	64750.029
38	2	Air By-Pass Screw Nut	34705.001
39	2	Throttle Plate	64005.126
40	4	Throttle Plate Fixing Screw	64520.027
41- E	1	Air Horn Gasket	41655.013
41- L	1	Air Horn Gasket	41655.020
42	1	Throttle Return Spring	47610.035
43	1	Throttle Lever	45034.109
44	2	Choke Tube Fixing Screw	64830.002
45	2	Choke Tube Fixing Screw Nut	34715.010
46	2	Fixing Screw	64700.013
47	2	Main Jet	73401.115
48	2	Emulsion Tube	61450.031
49	2	Air Corrector Jet	77401.200

Fig.	Qty	Description	Code
50	2	Emulsion Tube Holde	52580.006
51	1	Float	41030.008
52	1	Float Pin	52000.001
53	1	Needle Valve	79511.175
54	1	Needle Valve Gasket	83102.100
55	5	Top Cover Fixing Screw	64700.005
56	1	Fuel Inlet Pipe	10525.023
57	1	Pump Adjustment Rod	12750.126
58	1	Spring Clip	32610.003
59	1	Pump Rod Nut	34725.008
60	2	Fuel Pipe Gasket	41535.003
61	1	Threaded Cap	61002.022
62	1	Throttle Shaft	10005.243

E - Early carburettor
L - Late carburettor

FUEL SYSTEM MANUAL

40, 42, 45 DCOE — (Early Model) WEBER

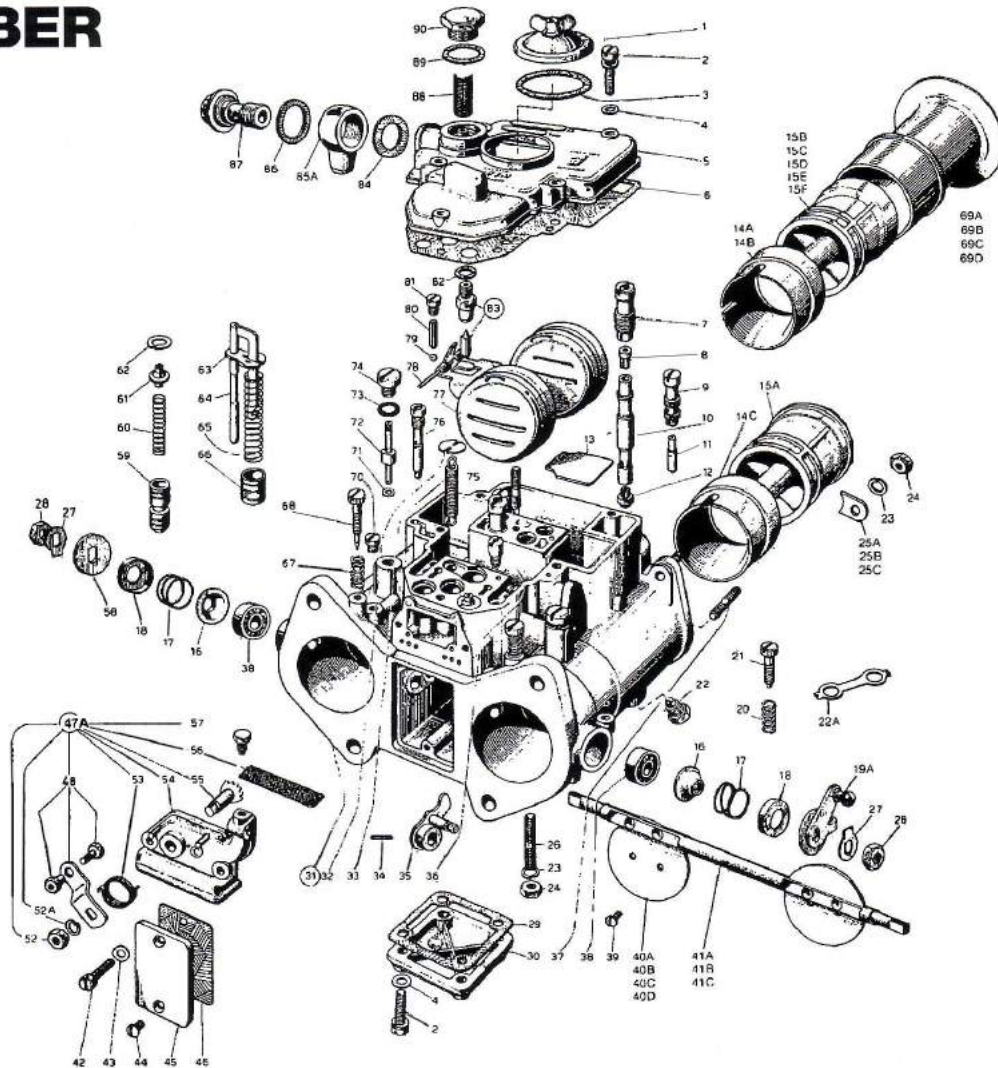


Fig.	Qty	Description	Code	Fig.	Qty	Description	Code	Fig.	Qty	Description	Code
1	1	Jet Cover	32376.003	18	2	Retaining Cover	58000.007	40D	2	Throttle Plate 45 DCOE 15/16	64005.084
2	5	Cover Screw	64700.001	19A	1	Throttle Lever	45034.044	41A	1	Throttle Shaft 40DCOE	10005.438(2)
3	1	Gasket	41550.002	20	1	Spring 4	7600.007	41C	1	Throttle Shaft 45DCOE	10005.437(2)
4	5	Washer	55510.034	21	1	Throttle Screw	64590.002	42	2	Cold Start Screw	64700.004
5	1	Carb Top Cover	NLA	22	4	Locking Screw	64840.003	43	2	Flat Washer	55510.038
6	1	Carb Cover Gasket	41715.001	22A	2	Locking Plate	52155.003	44	2	Flat Fixing Screw	64570.009
7	2	Emulsion Tube Holder	52580.001	23	1	Spring Washer	55525.002	45	1	Plate	52135.002
8	2	Air Corrector Jet	77401 (1)	24	1	Nut	34705.004	46	1	Gasket	41640.021
9	2	Idle Jet Holder	52585.006	25A	4	L/Plate 45 DCOE	52150.004	47A	1	Cold Start Unit L/H	32556.002
10	2	Emulsion Tube	61450(I)	25B	4	L/Plate 42 DCOE	52150.005	47B	1	Alt. Cold Start Unit R/H	32556.004
11	2	Idle Jet	74800 Ser.	25C	4	L/Plate 40 DCOE	52150.012	52	1	Nut	34715.010
12	2	Main Jet	73401 (1)	26	1	Stud	64955.104	52A	1	Washer	55525.010
13	1	Plate	52130.003	27	2	Lock Washer	55520.004	53	1	Return Spring L/H	47610.006
14A	2	Choke Tube 40 DCOE	72302	28	2	Shaft Nut	34710.003	53	1	Return Spring R/H	47610.042
14B	2	Choke Tube 42 DCOE	72304(I)	29	1	Gasket	41640.001	54	1	Cold Start Unit Body	N/A
14C	2	Choke Tube 45 DCOE	72116	30	1	Bottom Bowl Cover	32374.008	55	1	Shaft	N/A
15A	2	Auxiliary Venturi 45 DCOE with Air Horns	69602(I)	31	1	Carburettor Body	N/A	56	1	Filter Screen	37000.016
15B	2	Auxiliary Venturi 45 DCOE without Air Horns	69904(I)	32	1	Spring Anchor Plate	52210.006	57	1	Fixing Bolt	64605.017
15C	2	Auxiliary Venturi 42 DCOE with Air Horns	70002(I)	33	1	Throttle Return Spring	47605 (1)	58	1	Shaft Washer	55555.010
15D	2	Auxiliary Venturi 40 DCOE with Air Horns	70003(I)	34	1	Pin	58445.001	59	2	Start Valve	64330.003
15E	2	Auxiliary Venturi 40 DCOE without Air Horns	70001 (1)	35	1	Pump Control Lever	45082.005	60	2	Starter Valve Spring	47600.005
15F	2	Auxiliary Venturi Extended Type 40 DCOE with Air Horns	70005 (1)	36	1	Stud	64955.007	61	2	Spring Retainer	12775.004
16	2	Dust Cover	41570.001	37	1	Stud	64955.101	62	2	Spring Washer	10140.010
17	2	Spring	47600.063	38	2	Throttle Shaft Bearing	32650.001	63	1	Pump Spring Retainer	52140.004
				39	4	Throttle Plate Screw	64570.006	64	1	Pump Rod	10410 Ser.
				40A	2	Throttle Plate 40DCOE	64005.059	65	1	Pump Spring	47600 Ser.
				40B	2	Throttle Plate 42DCOE	64005.067	66	1	Pump Plunger	58602.003
				40C	2	Throttle Plate 45DCOE Excl. 15/16	64005.069	67	2	Idle Screw Spring	47600.007
								68	2	Idle Mixture Screw	64750.001

Continued - next page.

FUEL SYSTEM MANUAL

40, 42, 45 DCOE — (Early Model) WEBER

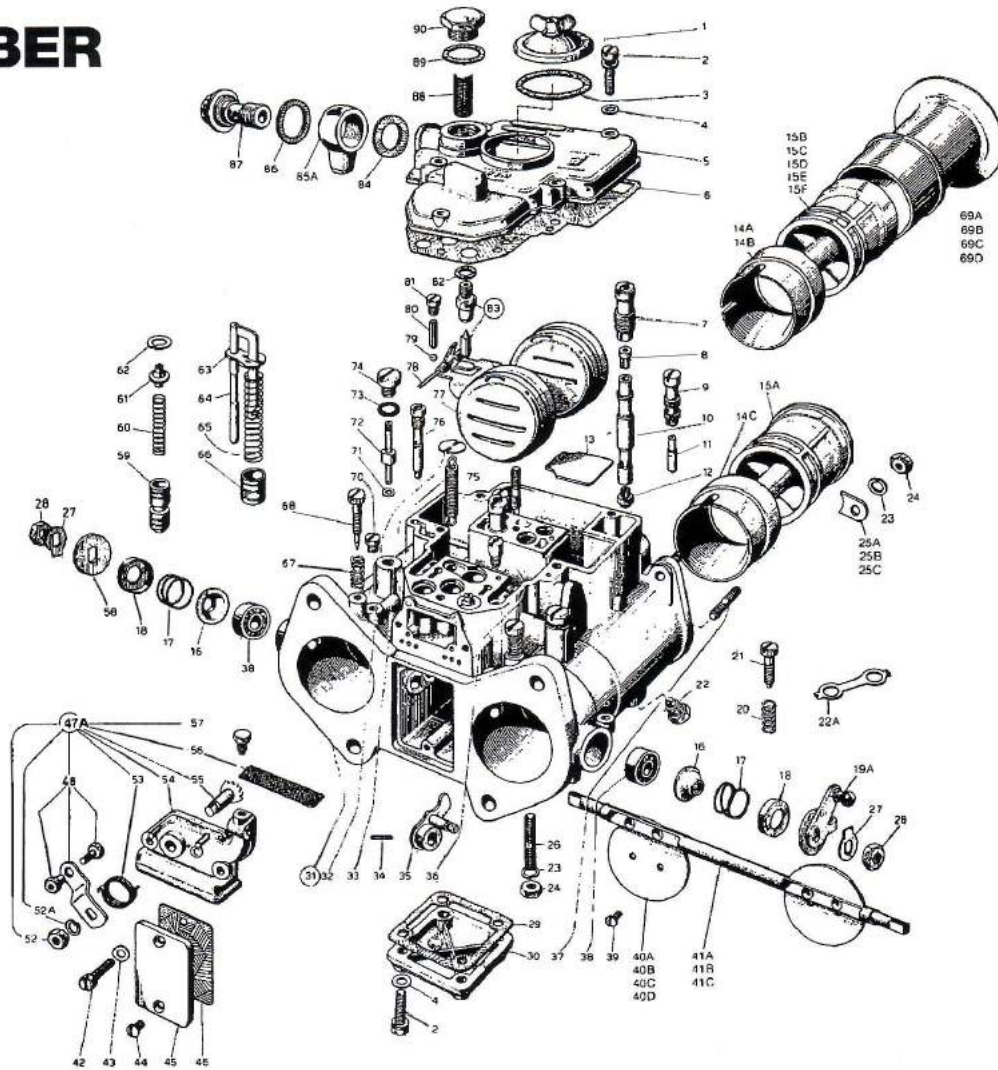


Fig.	Qty	Description	Code
69A	2	Air Horn 45DCOE 9	52840.001
69B	2	Air Horn 45DCOE 13/15/16	52840.030
69C	2	Air Horn 40 DCOE 2	52840.004
69D	2	Air Horn 40 DCOE 18	52840.024
70	2	Progression Hole Plug	61015.002
71	2	Pump Gasket	41535.021
72	2	Pump Jet	76801 (1)
73	2	Pump Cover Seal	41565.009
74	2	Pump Cover	61015.008
75	1	Inlet Valve with Ex.	79701 (1)
76	2	Starter Jet	75605.060
77	1	Float	41030.004
78	1	Float Fulcrum Pin	52000.001
79	2	Pump Valve Ball	58300.001
80	2	Stuffing Ball	52730.001
81	2	Retaining Screw	61015.006
82	1	Needle Valve Gasket	83102.100
83	1	Needle Valve	79503(1)
84	1	Fuel Union Gasket	41530.031
85A	1	Fuel Union (Blank)	10354.001
85B	1	Fuel Union Straight 1/4" barb	10356.004
85B	1	Fuel Union Straight 5/16" barb	10356.003
85C	1	Fuel Union 90 deg. 5/16" barb	10536.035
85D	1	Fuel Union (Dual) "T" peice	10536.034
86	1	Fuel Union Gasket	41530.024

Fig.	Qty	Description	Code
87	1	Fuel Union Bolt	12715.008
88	1	Fuel Filter	37022.010
89	1	Gasket	41530.024
90	1	Plug	61002.010
91	1	R/H Lever	45034.042

- (1) Calibrated parts requiring 3 more digits to be complete.
- (2) Replacement shafts are not drilled for accelerator actuation.

FUEL SYSTEM MANUAL

45 DCOE—(Late Model) WEBER

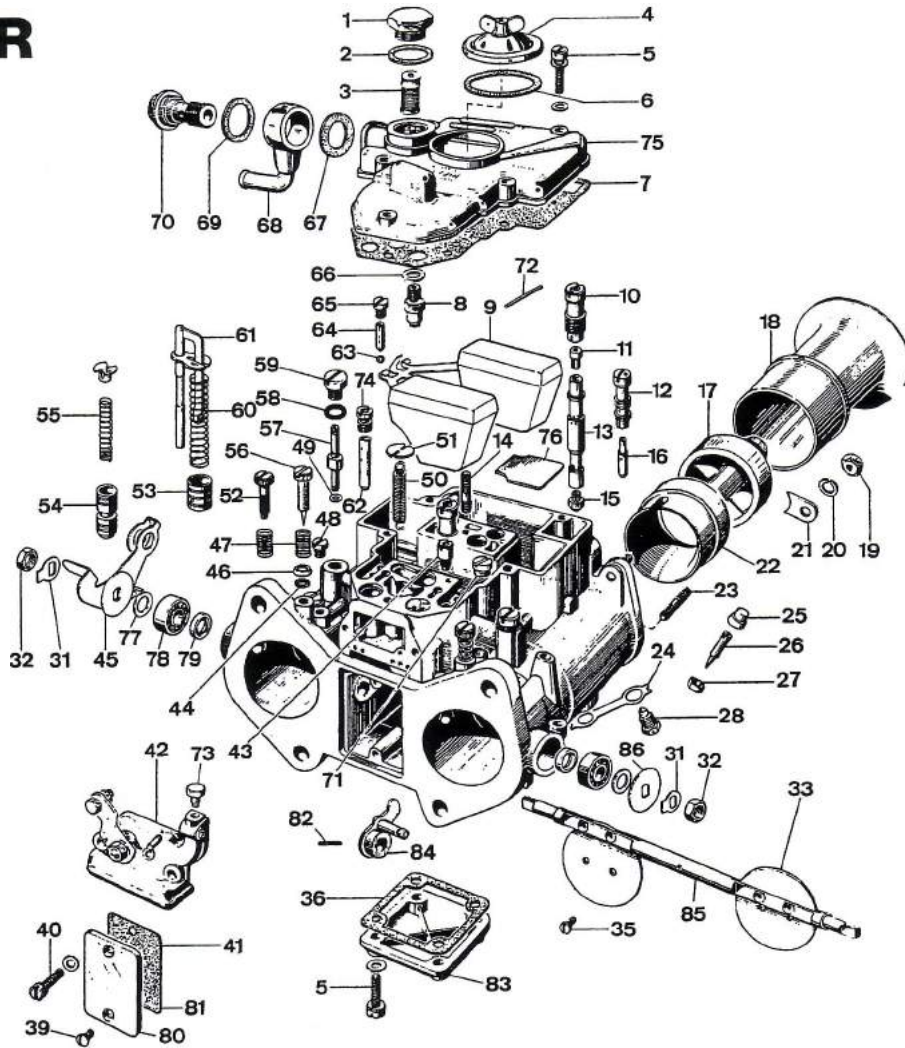


Fig.	Qty	Description	Code	Fig.	Qty	Description	Code	Fig.	Qty	Description	Code
1	1	Filter Cover	61002.010	31	2	Lock Washer	55520.004	61	1	Pump Rod	10410.015
2	1	Filter Cover Gasket	41530.024	32	2	Throttle Spindle Nut	34710.003	62	2	Starter Jet	75507.085
3	1	Filter Element	37022.002	33	2	Throttle Plate	64005.084	63	2	Pump Demand Valve Ball	58300.003
4	1	Jet Inspection Cover	32376.003	35	4	Throttle Plate Screw	64520.027	64	2	Pump Valve Weight	52730.001
5	9	Screw	64700.001	36	1	Bottom Cover Gasket	64005.084	65	2	Pump Demand Valve Cover	61015.006
6	1	Jet Inspection Cover Gasket	41550.002	39	2	Inspection Cover Fixing Screw	64750.009	66	1	Needle Valve Gasket	83102.120
7	1	Top Cover Gasket	41715.011	40	2	Choke Cover Fixing Screw	64700.004	67	1	Fuel Union Gasket	41530.031
8	1	Needle Valve	79503.200	41	1	Pump Cover Gasket	41640.021	68	1	Fuel Union	10536.035
9	1	Float	41030.034	42	1	Choke Cover	32556.018	69	1	Fuel Union Gasket	41530.024
10	2	Emulsion Tube Holder	52580.001	43	1	Pump Spill	79701.040	70	1	Fuel Union Bolt	2715.008
11	2	Air Corrector Jet	77401.155	44	2	Idle Mixture Screw 'O' Ring	41565.002	71	2	Progression Hole Inspection Cover	61015.009
12	2	Idle Jet Holder	52585.006	45	1	Throttle Lever	45048.007	72	1	Float Pin	52000.001
13	2	Emulsion Tube	61450.181	46	2	Idle Mixture Screw Cup Washer	58000.006	73	1	Choke Cable Clamp	64605.017
14	1	Stud	64955.007	47	3	Spring	47600.007	74	2	Starter Air Jet	77505.150
15	2	Main Jet	73401.145	48	2	Vacuum Take-Off Cover	64590.008	75	1	Carburettor Top Cover	31734.198
16	2	Idle Jet	74821.055	49	2	Pump Jet Gasket	41535.021	76	1	Plate	52130.003
17	2	Auxiliary Venturi	69602.450	50	1	Spring	47605.012	77	2	Washer	55510.128
18	2	Air Horn	52840.001	51	1	Spring Anchor Plate	52210.006	78	2	Bearing	32650.001
19	4	Air Horn Fixing Nut	34705.004	52	1	Throttle Stop Screw	64625.012	79	2	O' Ring	41575.019
20	4	Spring Washer	55525.010	53	1	Pump Plunger	58602.003	80	1	Inspection Cover	52135.024
21	4	Air Horn Tab	52150.004	54	2	Starter Valve	64330.003	81	1	Gasket	416400210
22	2	Venturi (Choke Tube)	72116.360	55	2	Starter Valve Spring	47600.105	82	1	Pin	58445.001
23	4	Stud	64955.110	56	2	Idle Mixture Screw	64750.003	83	1	Cover	32374.008
24	2	Lock Washer	52155.003	57	2	Pump Jet	76801.045	84	1	Pump Cam	45082.005
25	2	Air By-Pass Screw Cap	14945.003	58	2	Pump Jet 'O' Ring	41565.009	85	1	Throttle Spindle	10005.447
26	2	Air By-Pass Screw	64750.002	59	2	Pump Jet Cover	61015.008	86	1	Washer	55555.010
27	2	By-Pass Screw Lock Nut	34705.001	60	1	Pump Rod Spring	47600.064				
28	2	Locking Screw	64840.003								

FUEL SYSTEM MANUAL

40 DCOE—(Late Model) WEBER

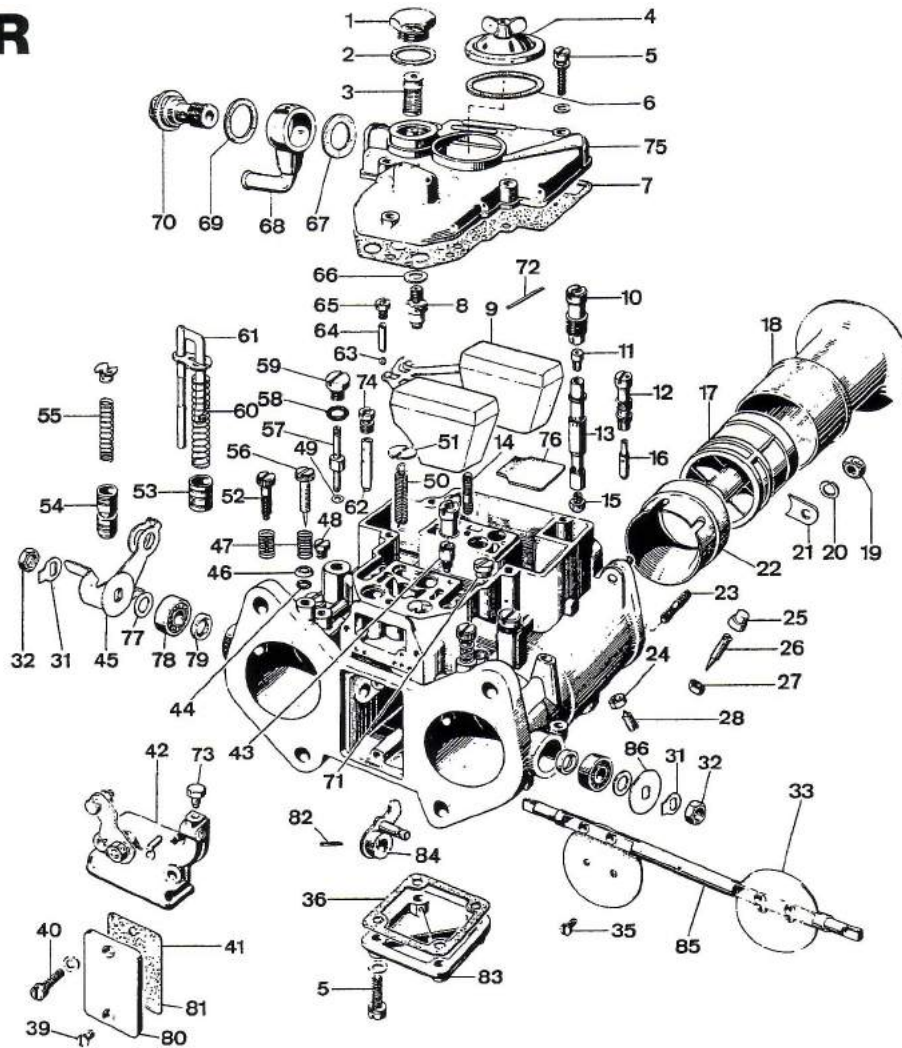


Fig.	Qty	Description	Code	Fig.	Qty	Description	Code	Fig.	Qty	Description	Code
1	1	Filter Cover	61002.010	31	2	Lock Washer	55520.004	60	1	Pump Rod Spring	47600.064
2	1	Filter Cover Gasket	41530.024	32	2	Throttle Spindle Nut	34710.003	61	1	Pump Rod	10410.015
3	1	Filter Element	37022.010	33	2	Throttle Plate	64005.084	62	2	Starter Jet	75507.085
4	1	Jet Inspection Cover	32376.003	35	4	Throttle Plate Screw	64520.027	63	2	Pump Demand Valve Ball	58300.003
5	9	Screw	64700.001	36	1	Bottom Cover Gasket	64005.044	64	2	Pump Valve Weight	52730.001
6	1	Jet Inspection Cover Gasket	41550.002	39	2	Inspection Cover Fixing Screw	64750.009	65	2	Pump Demand Valve Cover	58070.008
7	1	Top Cover Gasket	41715.011	40	2	Choke Cover Fixing Screw	64700.004	66	1	Needle Valve Gasket	83102.120
8	1	Needle Valve	79503.175	41	1	Pump Cover Gasket	41640.021	67	1	Fuel Union Gasket	41530.031
9	1	Float	41030.034	42	1	Choke Cover	32556.018	68	1	Fuel Union	10536.035
10	2	Emulsion Tube Holder	52580.001	43	1	Pump Spill	79701.050	69	1	Fuel Union Gasket	41530.024
11	2	Air Corrector Jet	77401.200	44	2	Idle Mixture Screw 'O' Ring	41565.002	70	1	Fuel Union Bolt	12715.008
12	2	Idle Jet Holder	52585.006	45	1	Throttle Lever	45048.007	71	2	Progression Hole Inspection Cover	61015.009
13	2	Emulsion Tube	61450.031	46	2	Idle Mixture Screw Cup Washer	58000.006	72	1	Float Pin	52000.001
14	1	Stud	64955.007	47	3	Spring	47600.007	73	1	Choke Cable Clamp	64605.017
15	2	Main Jet	73401.115	48	2	Vacuum Take-Off Cover	64590.008	74	2	Starter Air Jet	77505.150
16	2	Idle Jet	74822.045	49	2	Pump Jet Gasket	41535.021	75	1	Carburettor Top Cover	31734.197
17	2	Auxiliary Venturi	69912.450	50	1	Throttle Spindle Return Spring	47605.012	76	1	Plate	52130.003
18	2	Air Horn	52840.012	51	1	Spring Anchor Plate	52210.006	77	2	Washer	55510.128
19	4	Air Horn Fixing Nut	34705.004	52	1	Throttle Stop Screw	64625.012	78	2	Bearing	32650.001
20	4	Spring Washer	55525.010	53	1	Pump Plunger	58602.003	79	2	O' Ring	41575.019
21	4	Air Horn Tab	52150.012	54	2	Starter Valve	64330.003	80	1	Inspection Cover	52135.024
22	2	Venturi (Choke Tube)	72302.300	55	2	Starter Valve Spring	47600.105	81	1	Gasket	41640.021
23	4	Stud	64955.110	56	2	Idle Mixture Screw	64750.003	82	1	Pin	58445.001
24	2	Lock Nut	34710.003	57	2	Pump Jet	76801.040	83	1	Cover	32374.008
25	2	Air By-Pass Screw Cap	14945.003	58	2	Pump Jet 'O' Ring	41565.009	84	1	Pump Cam	45082.005
26	2	Air By-Pass Screw	64750.002	59	2	Pump Jet Cover	61015.008	85	1	Throttle Spindle	10005.446
27	2	By-Pass Screw Lock Nut	34705.001					86	2	Washer	55555.010
28	4	Locking Screw	64830.006								

FUEL SYSTEM MANUAL

32/36 DGAV/EV

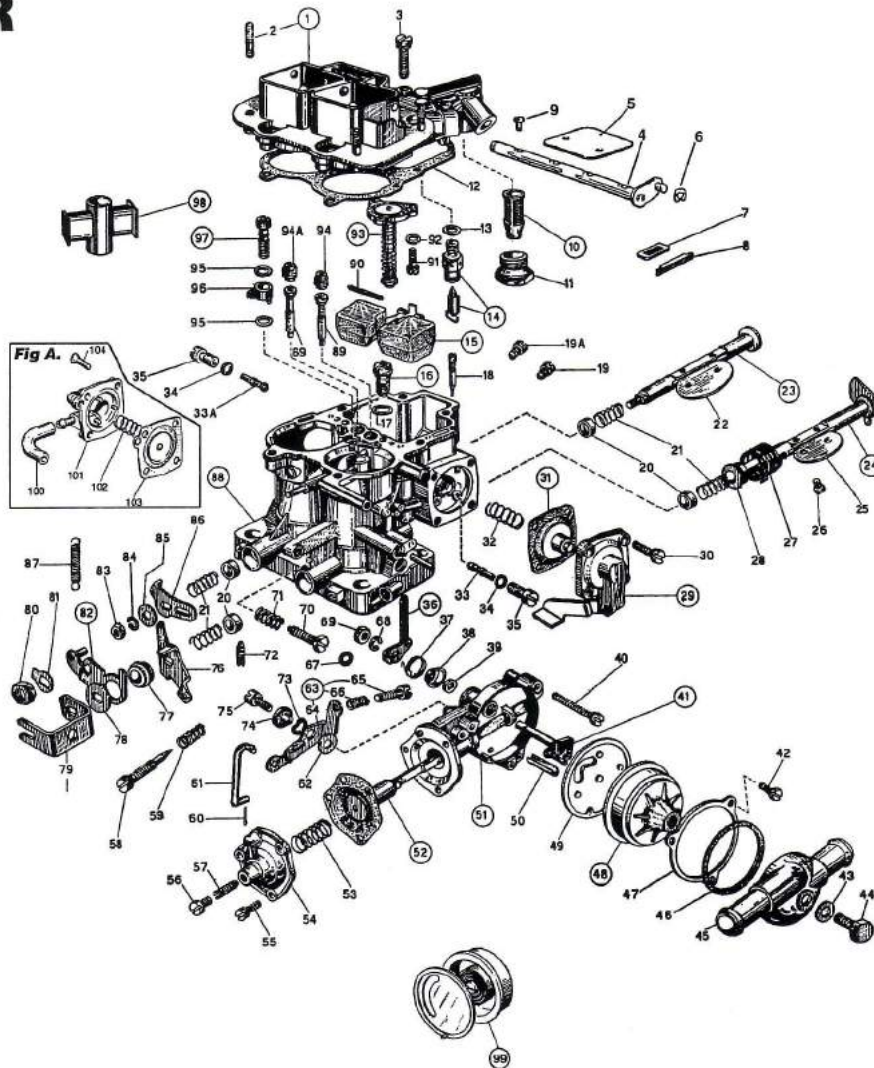


Fig A. Ford Cortina—(Australian only) Late model

Fig.	Qty	Description	Code	Fig.	Qty	Description	Code	Fig.	Qty	Description	Code
1	1	Carb. Cover Assy.	31716.166	23	1	Secondary Shaft Assy.	10015.492	44	1	Water Cover Screw	64610.006
2	4	Stud Bolt	64955.111	23	1	Sec. Shaft Assy. O/S	10016.477	45	1	Auto-Choke Water Chamber	32444.005
3	6	Carb. Cover Screw	64700.001	24	1	Primary Shaft Assy.	10015.493	46	1	Water Chamber Seal Gasket	41555.001
4	1	Choke Shaft & Lever Assy.	10020.221	24	1	Primary Shaft Assy. O/S	10016.476	47	1	Thermostat Assy. Locking Ring	52135.006
5	2	Starting Throttle Valve	64010.007	25	1	Primary Throttle Valve	64005.090	48	1	Auto-Choke Thermostat Assy.	57804.079
6	1	Spring Ring	10140.501	26	4	Throttle Plates Screw	64520.023	49	1	Gasket-Auto-Choke Body	41640.005
7	1	Dust Seal Plate	52135.018	27	1	Shaft Return Spring	47610.079	50	1	Plate-Choke Shaft	52130.012
8	1	Dust Seal Plug	61070.002	28	1	Spacer	12765.047	51	1	Auto-Choke Body Assy.	57804.045
9	4	Choke Plates Screw	64525.003	29	1	Accel. Pump Cover	32486.037	52	1	Choke Diaphragm (Flat Stem)	47407.056
10	1	Strainer Assy.	37022.003	30	4	Pump Cover Screw	64700.006	52	1	Choke Diaphragm (Round Stem)	47407.162
11	1	Strainer Inspect. Plug	61002.018	31	1	Accel. Pump Dia.		53	1	Diaphragm Loading Spring	47600.141
12	1	Carb. Cover Gasket	41705.040	32	1	Pump Loading Spring	47600.092	54	1	Auto-Choke Cover	32384.020
13	1	Needle Valve Gasket	41535.015	33	1	Primary Idle Jet	74403 (I)	55	3	Auto-Choke Cover Screw	64700.007
14	1	Needle Valve Assy.		33A	1	Secondary Idle Jet	74403 (I)	56	1	Screw Plug	61015.003
15	1	Float Assy. - Brass	41030.019	34	2	Gasket-Idling Jet Holder	41565.002	57	1	Diaphragm Adjusting Screw	64595.005
	1	Float Assy. - Poly		35	2	Idling Jet Holder	2570.006				
16	1	Power Needle Valve Assy.	64235.016	36	1	Choke Control Lever	45034.090				
17	1	Power Valve Gasket	41530.013	37	1	Spring-Fast Idle Cam	47610.080				
18	1	Pump Discharge Blanking Needle	64900.001	38	1	Spring Retaining Cover	58000.018				
19	1	Primary Main Jet	73801 (I)	39	1	Washer for Shaft	55555.029				
19A	1	Secondary Main Jet	73801 (I)	40	3	Choke Screw	64700.008				
20	4	Shaft Retaining Bush	12750.085	41	1	Auto-Choke Shaft & Lever Assy.	10085.033				
21	4	Bush Retaining Spring	47600.027	42	3	Plate Screw	64615.005				
22	1	Sec. Throttle Valve	64005.034	43	1	Washer-Water Cover Screw	41530.002				

Continued - next page.

FUEL SYSTEM MANUAL

32/36 DGAV/EV

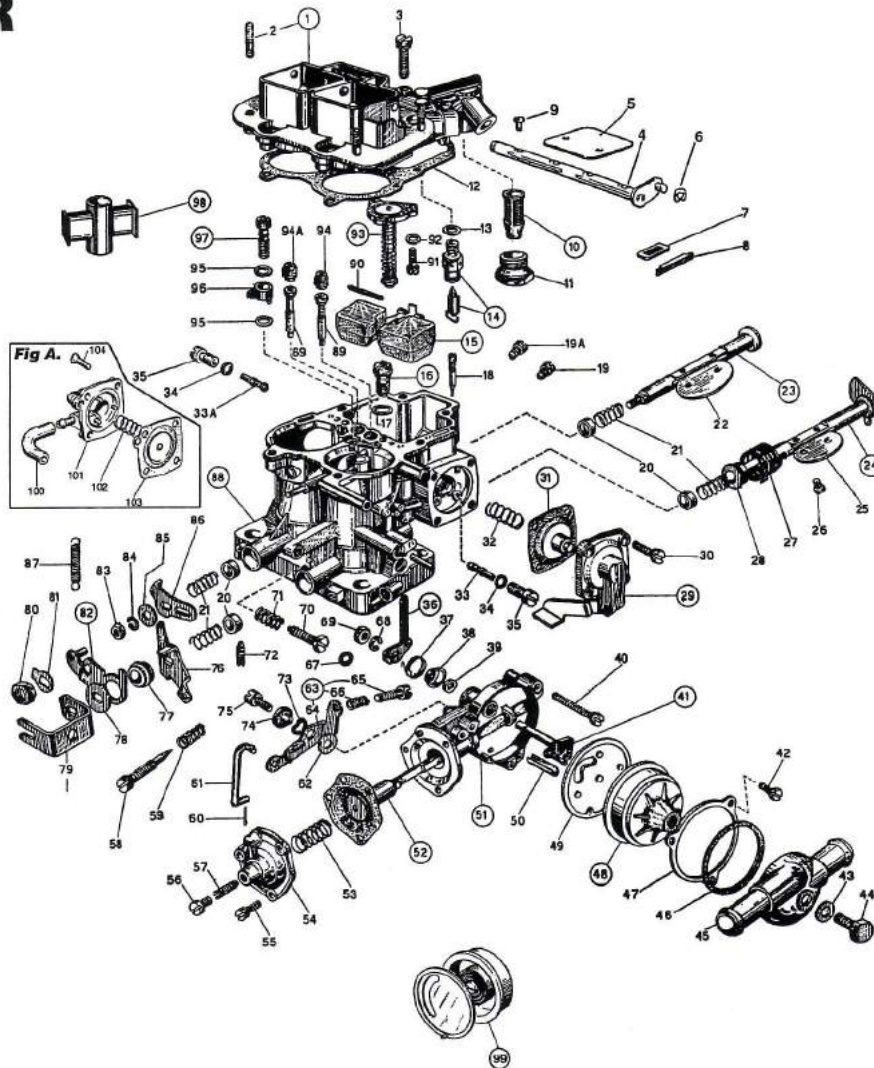


Fig A. Ford Cortina—(Australian only) Late model

Fig.	Qty	Description	Code	Fig.	Qty	Description	Code	Fig.	Qty	Description	Code
58	1	Idle Adjusting Screw		75	1	Loose Lever Screw	64700.014	97	1	Pump Del. Valve Assy.	64290.024
		- DGV, DGAV Early	64750.025	76	1	Primary Throttle Control Lever		98	2	Auxiliary Venturi	71111 (1)
		- Small Emission	64750.051					99	1	Electric Choke Element	57804.333
		- Long Ford	64750.046	77	1	Bushing-Loose Lever	12765.002	100	1	Pneumatic Pump Hose	61400.022
59	1	Spring for Idle Adjusting Screw	47600.007	78	1	Washer -Loose Lever	55510.061	101	1	Pneumatic Pump Cover	32486.075
60	1	Split Pin	32610.005	79	1	Throttle Valve Control Lever		102	1	Pneumatic P/Spring	47600.233
61	1	Fast Idling Control Rod	61280.082	80	1	Throttle Shaft Nut	45136.029	103	1	Pneumatic P/Dia.	47407.115
62	1	Washer-Loose Lever	55510.003	81	1	Lock Washer	55520.002	104	4	Pump Cover Screws	64565.001
63	1	Fast Idling Loose Lever Assy.		82	1	Loose Lever Assy.	45069.011				
			45041.053	83	1	Secondary Shaft Nut	34705.001				
64	1	Lever	45039.056	84	1	Spring Washer	55525.001				
65	1	Screw	64590.004	85	1	Washer-Loose Lever	55510.046				
66	1	Spring	47600.007	86	1	Secondary Throttle Control Lever					
67	1	Auto-Choke 'O' Ring Seal	41565.008				45032.124				
68	1	Spring Washer	55525.003	87	1	Spring-Loose Lever	47605.010				
69	1	Throttle Shaft Nut	34715.016	88	1	Carburettor Body Not Supplied					
70	1	Primary Throttle Adjusting Screw	64625.017	89	2	Emulsifying Tube	61440 (l)				
			47600.007	90	1	Float Fixing Pin	52000.015				
71	1	Spring for Throttle Adjusting Screw		91	3	Power Valve Screw	64700.007				
			47600.007	92	3	Washer-Power Valve	55510.028				
72	1	Sec. Throttle Adjusting Screw	64595.005	93	1	Carb. Power Valve Assy.					
73	1	Wave-Washer-Loose Lever		94	1	Primary Air Corrector Jet	77201 (1)				
			55530.005	94A	1	Sec. Air Corrector Jet	77201 (1)				
74	1	Bushing-Loose Lever	12765.042	95	2	Pump Jet Gasket	41530.012				
				96	1	Accel. Pump Jet	76226 (l)				

Note: (1) Calibrated parts require 3 more digits to be complete.

FUEL SYSTEM MANUAL

32/36 DGV

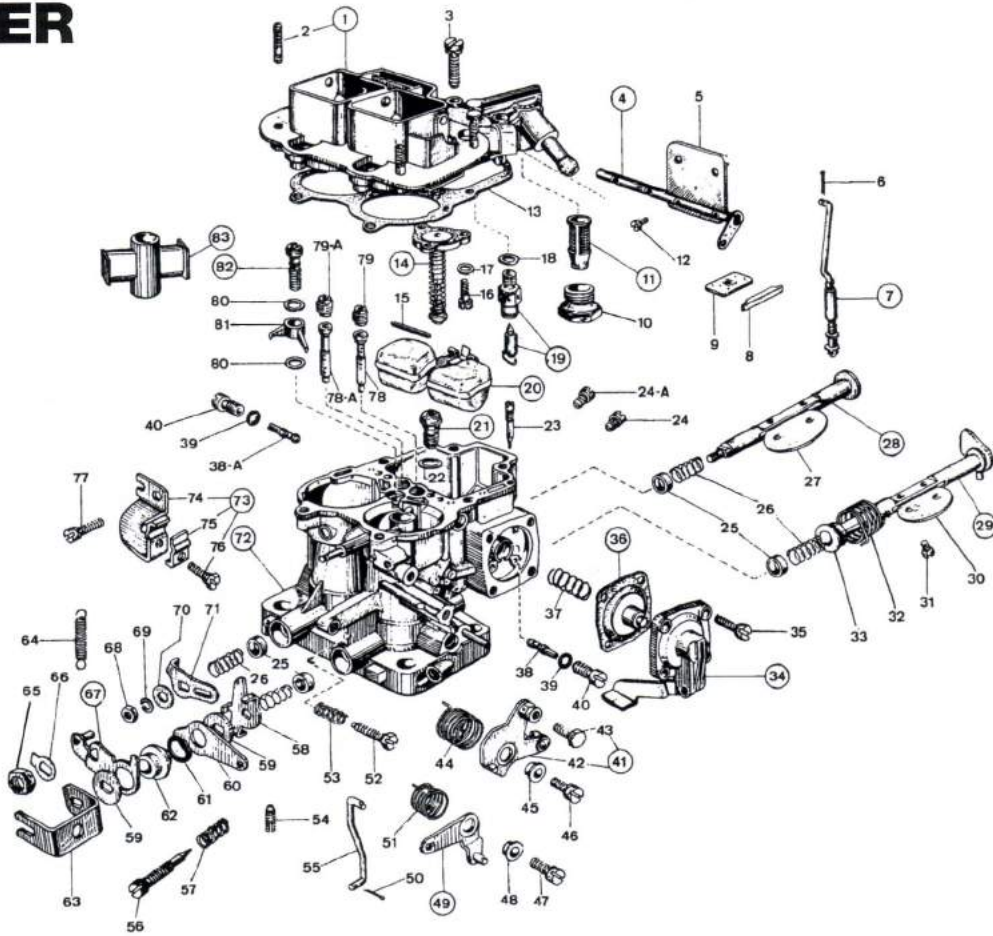
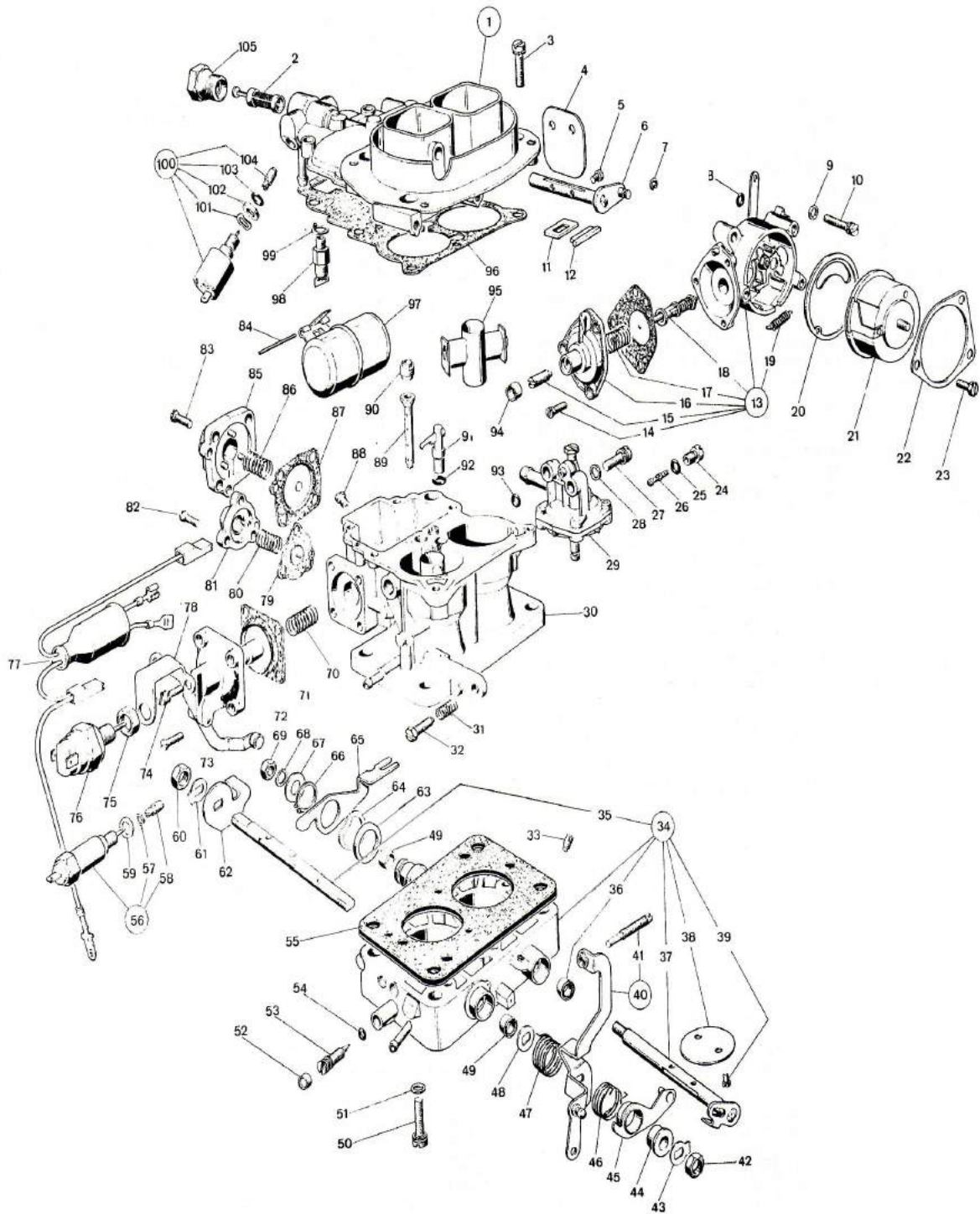


Fig.	Qty	Description	Code	Fig.	Qty	Description	Code	Fig.	Qty	Description	Code
1	1	Carb. Cover Assy	31716.132	29	1	Primary Shaft	10015.493	59	2	Washer-Lever	55510.061
2	4	Stud Bolt	64955.002	29	1	Prim. Shaft Assy. O/S	10016.476	60	1	Fast Idling Lever	45067.024
3	6	Carb. Cover Screw	64700.001	30	1	Primary Throttle Valve	64005.090	61	1	Wavy Washer	55530.002
4	1	Choke Shaft & Lever	10020.222	31	4	Throttle Plates Screw	64520.023	62	1	Bushing-Lever	12775.006
5	2	Choke Valve	64010.007	32	1	Shaft Return Spring	47610.079	63	1	Throttle Valve Lever	45136.029
6	1	Split Pin	32610.005	33	1	Spacer	12765.047	64	1	Spring-Loose Lever	47605.010
7	1	Choke Rod	61287.008	34	1	Accel. Pump Cover	32486.037	65	1	Throttle Shaft Nut	34715.014
8	1	Dust Seal Plug	61070.002	35	4	Pump Cover Screw	64700.006	66	1	Lock Washer	55520.002
9	1	Dust Seal Plate	52135.010	36	1	Pump Diaphragm		67	1	Loose Lever Assy.	45069.011
10	1	Strainer Plug	61002.018	37	1	Pump Loading Spring	47600.092	68	1	Secondary Shaft Nut	34705.001
11	1	Strainer Assy.	37022.003	38	1	Primary Idle Jet	74403(I)	69	1	Spring Washer	55525.001
12	4	Choke Plates Screw	64525.003	38A	2	Secondary Idle Jet	74403(I)	70	1	Washer-Loose Lever	55510.046
13	1	Carb. Cover Gasket	41705.035	39	2	Idling Jet o-ring	41565.002	71	1	Sec. Throttle Lever	45032.124
14	1	Power Valve Assy.		40	2	Idling Jet Holder	52570.006	72	1	Carburettor Body	Not Serviced
15	1	Float Fixing Pin	52000.015	41	1	Choke Control Lever	45202.064	73	1	heath Support Assy.	58702.024
16	3	Power Valve Screw	64700.007	42	1	Lever	45202.065	74	1	Sheath Support	58700.028
17	3	Washer-Power Valve	55510.038	43	1	Screw Securing Wire	64615.004	75	1	Sheath Securing Plate	52145.001
18	1	Needle Valve Gasket	41535.015	44	1	Spring-Choke Lever	47610.058	76	1	Sheath Plate Screw	64615.007
19	1	Needle Valve Assy.		45	1	Bushing-Choke Lever	12775.010	77	1	Sheath Support Screw	64700.012
20	1	Float Assy.-Brass	41030.019	46	1	Choke Lever Screw	64700.012	78	1	Primary Emulsion Tube	61440.216
	1	Float Assy.-Poly		47	1	Square Lever Screw	64700.012	78A	1	Sec. Emulsion Tube	61440.211
	1	Float Assy.-Plastic	41030.020	48	1	Bushing-Square Lever	12775.010	79	1	Primary Air Corr. Jet 7	7201 (1)
21	1	Power Needle Valve	64235.016	49	1	Fast Idle Lever	45096.025	79A	1	Sec. Air Corr. Jet	77201 (1)
22	1	Power Valve Gasket	41530.013	50	1	Split Pin	32610.005	80	2	Pump Jet Gasket	41530.012
23	1	Pump Discharge screw	64900.001	51	1	Spring-Square Lever	47610.033	81	1	Accel. Pump Jet	76226(I)
24	1	Primary Main Jet	73801 (1)	52	1	Primary Throttle Screw	64625.017	82	1	Pump Delivery Valve	64290.024
24A	1	Secondary Main Jet	73801 (1)	53	1	Spring-Throttle Screw	47600.007	83	1	Auxiliary Venturi	71111 (1)
25	4	Shaft Retaining Bush	12750.085	54	1	Sec.Throttle Screw	64595.005				
26	4	Bush Retaining Spring	47600.027	55	1	Fast Idle Control Rod	61280.086				
27	1	Sec. Throttle Valve	64005.034	56	1	Idle Adjusting Screw	64750.025				
28	1	Secondary Shaft	10015.492	57	1	Spring-Idle Screw	47600.007				
28	1	Sec. Shaft Assy. O/S	10016.477	58	1	Primary Throttle Lever	45046.020				

Note: (1) Calibrated parts require 3 more digits to be complete.

Tipo
34 ADM 1
Numero di ordinazione
18890.238

Applicazione
FORD
Falcon 4,1 L - CA
AUSTRALIA



Key	Qty	Description	Part No.	Key	Qty	Description	Part
1	1	Top Assembly	31716.461	60	1	Shaft Nut	34710.003
2	1	Inlet Filter	37022.004	61	1	Lock Washer	55520.004
3	6	Top Screw	64700.005	62	1	Pump Operating Lever	14850.140
4	1	Choke Plate	64010.031	63	1	Spacer	12750.103
5	2	Plate Screw	64525.003	64	1	Wave Washer	55530.014
6	1	Choke Shaft	10015.474	65	1	Lever	45067.048
7	1	Circlip	10140.501	66	1	Circlip	10140.304
8	1	O Ring	41565.008	67	1	Washer	55510.081
9	2	Spring Washer	55510.034	68	1	Lock Washer	55525.001
10	2	Screw	64700.001	69	1	Shaft Nut	34705.001
11	1	Shaft Guide	52135.018	70	1	Pump Spring	47600.092
12	1	Anti Rattle Plate	61070.002	71	1	Pump Diaphragm	47407.146
13	1	Choke Assembly	57804.446	72	1	Pump Cover	32486.084
14	3	Choke Housing Screw	64560.004	73	2	Pump Cover Screw	64565.001
15	1	Diaphragm Adjust. Screw	64595.005	74	2	Pump Cover Screw	64700.019
16	1	Diaphragm Cover	32384.060	75	1	Lock Nut	34715.003
17	1	Spring	47600.229	76	1	Solenoid	32240.501
18	1	Choke Pull Off Diaphragm	47407.226	77	1	Wiring Harness	14975.081
19	1	Spring	47605.030	78	1	Bracket	56510.008
20	1	Heat Seal Gasket	41640.052	79	1	Power Valve Diaphragm	47407.182
21		Choke Thermostat	57804.483	80	1	Spring	47600.005
22	1	Locking Ring 52135.029		81	1	Diaphragm Cover	32384.046
23	3	Screw	64615.004	82	3	Screw	64565.001
24	1	Idle Jet Holder Sec.	52570.006	83	4	Screw	64565.001
25	1	O Ring	41565.002	84	1	Float Pivot Pin	52000.015
26	1	Idle Jet Sec.	74403.060	85	1	Pneumatic Diaphragm	32484.044
27	2	Screw	64700.010	86	1	Pneumatic Dia. Spring	47600.279
28	2	Spring Washer	55510.038	87	1	Pneumatic Diaphragm	47407.163
29	1		31800.027	88	1	Main Jet Primary	73801.140
30	1	Main Body	Not Avail.	38	1	Main Jet Secondary	73801.210
31	1	Spring	47600.007	89	1	Emulsion Tube Prim.	61440.220
32	1	Screw	64625.012	89	1	Emulsion Tube Sec.	61440.491
33	1	Sec. Stop Screw	64595.013	90	1	Air Jet Primary	77201.170
34	1	Base Assembly	67016.092	90	1	Air Jet Secondary	77201.160
35	1	Throttle Shaft Prim.	10000.264	91	1	Pump Jet	76407.060
36	1	Bush	41575.010	92	1	O Ring	41565.001
37	1	Throttle Shaft Sec.	10015.273	93	1	O Ring	41565.008
38	2	Throttle Plate	64005.018	94	1	Cover	61075.002
39	4	Throttle Plate Screw	64520.027	95	1	Auxiliary Venturi Prim.	70508.450
40	1	Throttle Lever	45048.124	95	1	Auxiliary Venturi Sec.	70508.450
41	1	Choke FastIdle Screw	64595.035	96	1	Top Gasket	41705.072
42	1	Shaft Nut	34715.014	97	1	Float (Brass)	41015.004*
43	2	Lack Washer	55520.002	98	1	Needle Valve	79510.175
44	7	Spacer Bush	12775.092	99	1	Washer	83102.070
45	1	Lever	45069.092	100	1	Fuel Solenoid Assembly	43921.100
46	1	Spring	47610.175	101	1	Wave Washer	55530.016
47	1	Spring	47610.091	102	1	Cup	58000.019
48	1	Spacer	55555.019	103	1	Seal	41565.001
49	2	Bush	41575.010	104	1	Jet Fuel	74409.100
50	2	Screw	64700.016	105	1	Filter Plug	61002.019
51	2	Lock Washer	55510.018			Gasket Set	92.0263.05
52	1	Plug	61075.013				
53	1	Mixture Screw	64750.080				
54	1	O Ring	41565.010				
55	1	Intermediate Gasket Blck	39152.015				
56	1	Solenoid Idle Jet Stop	43926.060				
57	1	O Ring	55530.020				
58	1	Idle Jet	74409.060				
59	1	Copper Washer	41535.024				

*Nitrile Float for LPG/CNG 41015.004

61450.004 Vacuum Sensor not illustrated



CARATTERISTICHE

- Doppio corpo sincronizzato utilizzabile anche per applicazioni con sovralimentazione turbosoffiante
- Alberino principale a tenuta ermetica
- Guarnizione coperchio in Fair-Prene
- Galleggiante in Spansil
- Trombette
- Privo di circuito starter
- Possibilità di intercambiare le matricole montate all'origine del centratore, diffusore, raccordo ingresso carburante, asta comando pompa (Le caratteristiche dei particolari disponibili le potrete verificare consultando l'apposita pubblicazione)

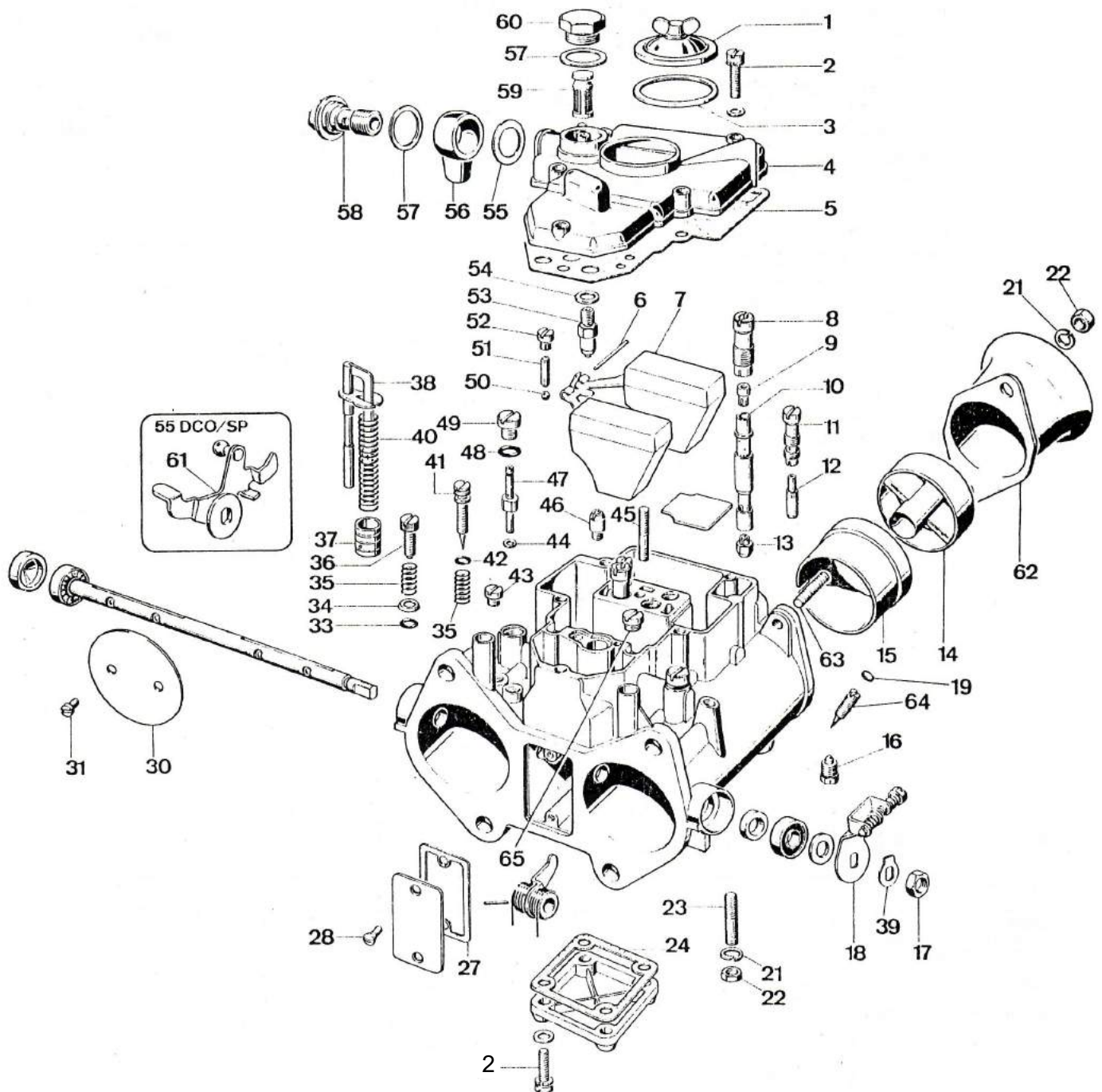


Fig.	Q.tà	Denominazione	Matricola	Fig.	Q.tà	Denominazione	Matricola
1	1	Coperchio ispezione getti	32376.003	38	1	Asta comando stantuffo pompa	10410.015
2	9	Vite di fissaggio	64700.001	39	1	Rosetta di sicurezza alberino	55520.004 R
3	1	Guarnizione coperchio ispezione getti	41550.009 M	40	1	Molla stantuffo pompa	47600.068
4	1	Coperchio carburatore (50 DCO/SP)	31734.193	41	2	Vite registro miscela minimo	64750.058
4	1	Coperchio carburatore (50 DCO 1/SP)	31734.194	42	2	O.R. vite registro miscela minimo	41565.015 M
5	1	Guarnizione coperchio carburatore	41715.011 M	43	2	Tappo chiusura fori progressione	61015.009
6	1	Perno fulcro galleggiante	52000.001 R	44	2	Guarnizione getto pompa	41535.021 M
7	1	Galleggiante	41030.034	45	1	Vite prigioniera fis. coper. ispez. get.	64955.007
8	2	Portagetto aria di freno	52580.001	46	1	Valvola aspirazione e scarico pompa	79701.100
9	2	Getto aria di freno	77401.160	47	2	Getto pompa	76801.045
10	2	Tubetto emulsionatore	61450.091	48	2	O.R. Tappo getto pompa	41565.009 M
11	2	Portagetto minimo	52585.006	49	2	Tappo getto pompa	61015.008
12	2	Getto minimo	74821.065	50	2	Sfera valvola mandata pompa	58300.003
13	2	Getto principale	73401.180	51	2	Premisiera	52730.001
14	2	Centratore	68820.500	52	2	Tappo valvola mandata pompa	61015.006
15	2	Diffusore	72136.460	53	1	Valvola a spillo	79503.250 M
16	4	Vite di fissaggio	64840.003	54	1	Guarnizione valvola a spillo	83102.100 M
17	1	Dado fissaggio alberino principale	34715.017	55	1	Guarnizione raccordo ingresso carb.	41530.031 M
18	1	Leva comando alberino (50 DCO 1/SP)	45041.270	56	1	Raccordo ingresso carburante	10354.019
19	2	Tappo vite registro aria	61030.008	57	2	Guarnizione tappo filtro e raccordo	41530.024 M
21	5	Rosetta elastica	55525.010	58	1	Bocchettone raccordo orientabile	12715.008
22	5	Dado vite ancoraggio carburatore	34705.004	59	1	Elemento filtrante	37002.002
23	1	Vite prigioniera ancoraggio carbur.	64955.104	60	1	Tappo filtro	61002.010
24	1	Guarniz. coperchio fondo vaschetta	41640.066 R	61	1	Leva principale	45041.269
27	1	Guarnizione coperchio vano pompa	41640.065 R	62	4	Vite prigioniera	64955.101
28	2	Vite fiss. coperchio vano leva pompa	64570.009	63	2	Presa aria a trombetta	52845.015
30	2	Valvola a farfalla	64005.135	64	2	Vite registro aria	64595.012
31	4	Vite di fissaggio valvola a farfalla	64520.027	65	2	Tappo chiusura fori progressione	64590.008
33	1	O.R. vite reg. andatura (50 DCO/SP)	41565.002 R				
34	1	Scodellino vite reg. and. (50 DCO/SP)	58000.006				
35	3	Molla vite registro miscela minimo	47600.007				
36	1	Vite registro andatura (50 DCO/SP)	64625.015				
37	1	Stantuffo pompa	58602.003				

M Assortimento manutenzione 92.0332.05
M + R Assortimento riparazione 92.1462.05.01

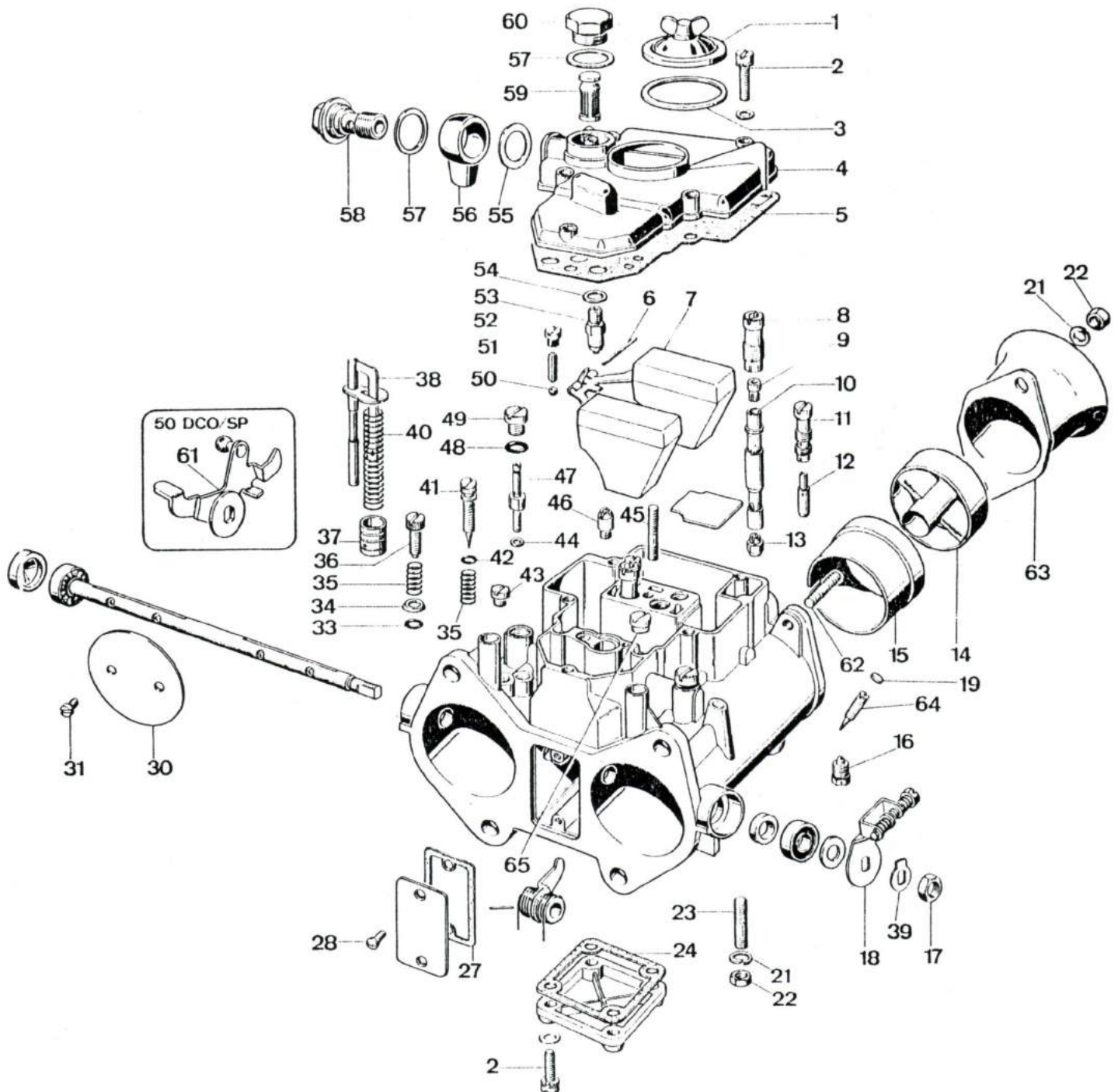
Scheda di regolazione

Diffusore	46		T ₂ /100
Centratore	5		T ₃ /100
Getto principale	180		T ₁ /100
Getto aria freno	160	Valvola a spillo	250
Tubetto emulsionatore	F7	Getto pompa	45
Getto minimo	F8/65	Scarico pompa	10L
Foro/Boccola registro miscela minimo	135	Livellatura galleggiante:	
Fori di progressione	T ₁ /100	con guarnizione (ottone)	mm 12 ± 0,25



CARATTERISTICHE

- Doppio corpo sincronizzato utilizzabile anche per applicazioni con sovralimentazione turbosoffiante
- Alberino principale a tenuta ermetica
- Guarnizione coperchio in Fair-Prene
- Galleggiante in Spansil
- Trombette
- Privo di circuito starter
- Possibilità di intercambiare le matricole montate all'origine del centratore, diffusore, raccordo ingresso carburante, asta comando pompa (Le caratteristiche dei particolari disponibili le potrete verificare consultando l'apposita pubblicazione)





CARATTERISTICHE

- Doppio corpo sincronizzato utilizzabile anche per applicazioni con sovralimentazione turbosoffiante
- Alberino principale a tenuta ermetica
- Guarnizione coperchio in Fair-Prene
- Galleggiante in Spansil
- Trombette
- Privo di circuito starter
- Possibilità di intercambiare le matricole montate all'origine del centratore, diffusore, raccordo ingresso carburante, asta comando pompa (Le caratteristiche dei particolari disponibili le potrete verificare consultando l'apposita pubblicazione)

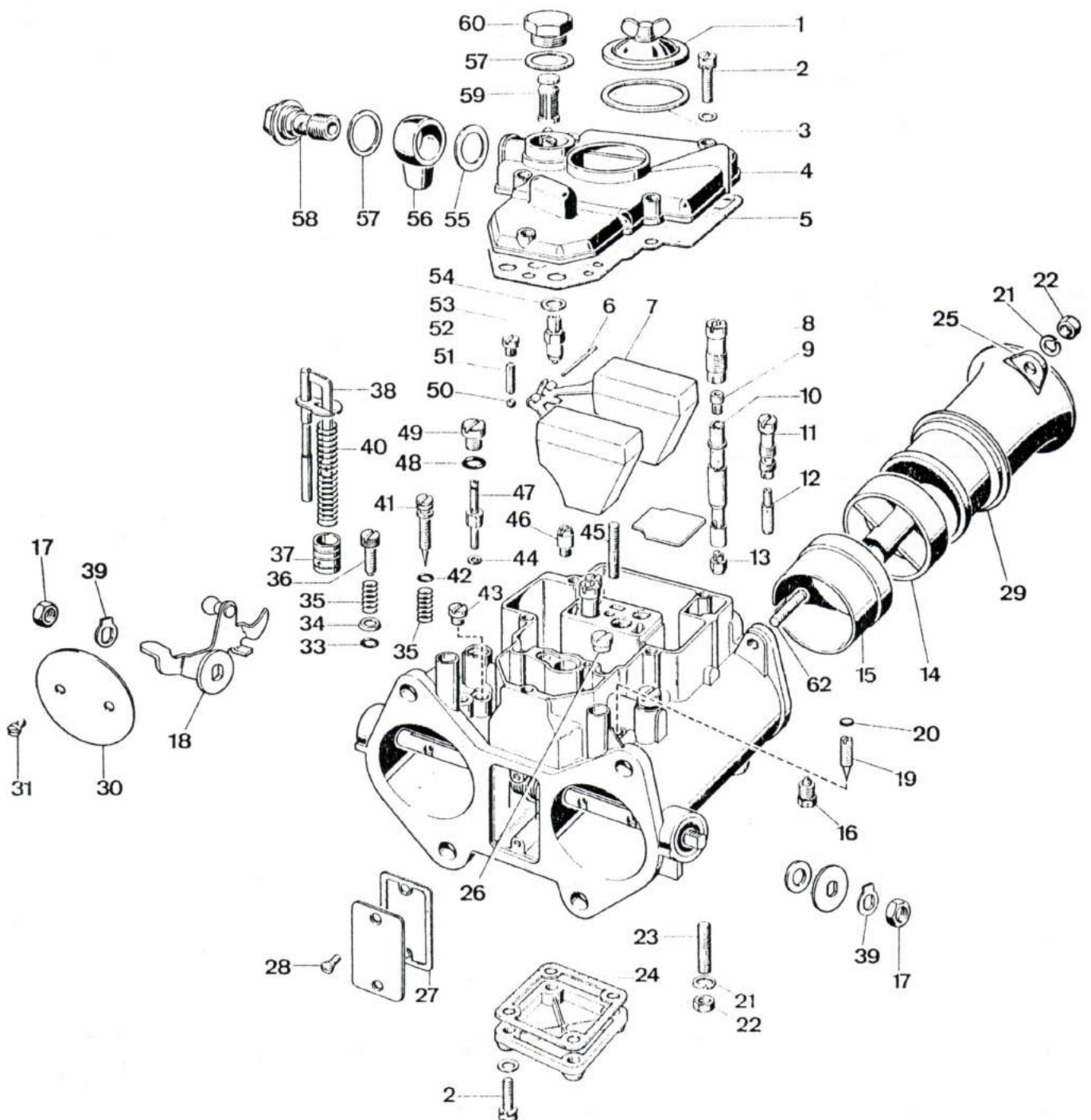


Fig.	Q.tà	Denominazione	Matricola	Fig.	Q.tà	Denominazione	Matricola
1	1	Coperchio ispezione getti	32376.003	38	1	Asta comando stantuffo pompa	10410.015
2	9	Vite di fissaggio	64700.001	39	2	Rosetta di sicurezza alberino	55520.004 R
3	1	Guarnizione coperchio ispezione getti	41550.009 M	40	1	Molla stantuffo pompa	47600.068
4	1	Coperchio carburatore	31734.199	41	2	Vite registro miscela minimo	64750.058
5	1	Guarnizione coperchio carburatore	41715.011 M	42	2	O.R. vite registro miscela minimo	41565.015 M
6	1	Perno fulcro galleggiante	52000.001 R	43	2	Tappo chiusura depressione	64590.008
7	1	Galleggiante	41030.034	44	2	Guarnizione getto pompa	41535.021 M
8	2	Portagetto aria di freno	52580.001	45	1	Vite prigioniera fiss. coper. isp. getti	64955.007
9	2	Getto aria di freno	77401.160	46	1	Valvola aspirazione e scarico pompa	79701.100
10	2	Tubetto emulsionatore	61450.091	47	2	Getto pompa	76801.045
11	2	Portagetto minimo	52585.006	48	2	O.R. tappo getto pompa	41565.009 M
12	2	Getto minimo	74821.065	49	2	Tappo getto pompa	61015.008
13	2	Getto principale	73401.180	50	2	Sfera valvola mandata pompa	58300.003
14	2	Centratore	68820.500	51	2	Premisfera	52730.001
15	2	Diffusore	72136.420	52	2	Tappo valvola mandata pompa	61015.006
16	4	Vite di fissaggio	64840.003	53	1	Valvola a spillo	79503.250 M
17	1	Dado fissaggio alberino principale	34710.003	54	1	Guarnizione valvola a spillo	83102.100 M
18	1	Leva principale	45041.145.04	55	1	Guarnizione raccordo ingresso carb.	41530.031 M
19	2	Vite registro aria	64595.012	56	1	Raccordo ingresso carburante	10354.019
20	2	Tappo vite registro aria	61030.008	57	2	Guarnizione tappo filtro e raccordo	41530.024 M
21	5	Rosetta elastica	55525.010	58	1	Bocchettone raccordo orientabile	12715.008
22	5	Dado vite ancoraggio carburatore	34705.004	59	1	Elemento filtrante	37022.002 M
23	1	Vite prigioniera ancoraggio carbur.	64955.104	60	1	Tappo filtro	61002.010
24	1	Guarniz. coperchio fondo vaschetta	41640.066 R				
25	4	Piastrina fissaggio presa aria	52135.053				
26	2	Tappo chiusura fori progressione	61015.009				
27	1	Guarnizione coperchio vano pompa	41640.065 R				
28	2	Vite fiss. coperchio vano leva pompa	64570.009				
29	1	Presa aria a trombetta	52840.034				
30	2	Valvola a farfalla	64005.108				
31	4	Vite di fissaggio valvola a farfalla	64520.027				
32	4	Vite prigioniera	64955.110				
33	1	O.R. vite registro andatura	41565.002 R				
34	1	Scodellino vite registro andatura	58000.006				
35	3	Molla vite registro miscela minimo	47600.007				
36	1	Vite registro andatura	64625.015				
37	1	Stantuffo pompa	58602.003				

M Assortimento manutenzione 92.0332.05
M + R Assortimento riparazione 92.1462.05.01

Scheda di regolazione

Diffusore	42	T ₂ /100
Centratore	5	T ₃ /100
Getto principale	180	250
Getto aria freno	160	45
Tubetto emulsionatore	F7	100
Getto minimo	F8/65	
Foro/Boccola registro miscela minimo	135	
Fori di progressione	T ₁ /100	
Valvola a spillo		250
Getto pompa		45
Scarico pompa		100
Livellatura galleggiante:		
con guarnizione (ottone)		mm 12 ± (0,25)

INTERCHANGE — WEBER CALIBRATED PARTS

OLD NUMBER TO NEW NUMBER

OLD NUMBER	NEW NUMBER	OLD NUMBER	NEW NUMBER	OLD NUMBER	NEW NUMBER	OLD NUMBER	NEW NUMBER
10549.028	68001.	31966.004	71104.	41160.008	74408.	41254.011	76409.
10549.030	68003.	31966.005	71105.	41160.821	81001.	41260.001	76601.
12750.501	68201.	31966.007	71106.	41160.822	81002.	41260.002	76602.
12750.503	68203.	31966.008	71107.	41160.823	81003.	41260.003	76603.
12750.505	68205.	31966.009	71108.	41161.201	74605.	41280.001	76801.
12750.507	68207.	31966.010	71109.	41161.251	74606.	41280.002	76802.
12750.510	68208.	31966.012	71110.	41161.401	74609.	41280.003	76803.
12750.511	68209.	31966.013	71111.	41161.501	74611.	41280.004	76804.
12750.513	68211.	31966.014	71112.	41161.651	74614.	41280.010	76810.
12750.519	68217.	31966.015	71113.	41161.822	81202.	41280.014	76814.
12750.521	68219.	31966.016	71114.	41161.826	81206.	41280.015	76815.
12765.253	68404.	31966.017	71115.	41165.001	74801.	41280.016	76816.
12765.263	68413.	31966.020	71116.	41165.003	74803.	41282.001	76901.
12765.266	68415.	31966.021	71117.	41165.004	74804.	41360.001	77201.
31856.001	69001.	31966.022	71118.	41165.005	74805.	41360.002	77202.
31866.001	69002.	31966.024	71119.	41165.009	74809.	41360.005	77203.
31866.002	69003.	31966.026	71120.	41165.051	74814.	41360.006	77204.
31866.003	69004.	31966.027	71121.	41165.052	74815.	41360.007	77205.
31866.004	69005.	31966.028	71122.	41165.053	74816.	41360.010	77206.
31866.005	69006.	34894.001	71501.	41165.054	74817.	41360.011	77207.
31866.006	69007.	34894.002	71502.	41165.055	74818.	41360.012	77208.
31866.008	69008.	34894.003	71503.	41165.056	74819.	41360.013	77209.
31866.009	69009.	34894.004	71504.	41165.057	74820.	41360.014	77210.
31866.010	69010.	34894.005	71505.	41165.058	74821.	41365.001	77401.
31866.011	69011.	34894.006	71506.	41165.059	74822.	41370.001	77501.
31876.002	69013.	34894.007	71507.	41165.060	74823.	41370.002	77502.
31876.004	69014.	34894.008	71508.	41165.061	74824.	41370.003	77503.
31876.005	69015.	34894.011	71510.	41165.062	74825.	41370.005	77505.
31876.006	69016.	34894.012	71511.	41165.063	74826.	41370.006	77506.
31886.001	69601.	34896.002	71701.	41165.064	74827.	41370.007	77507.
31886.002	69602.	34896.003	71702.	41165.065	74828.	41370.008	77508.
31896.003	69608.	34906.001	71703.	41165.067	74830.	41535.012	83101.
31896.005	69610.	34906.002	71704.	41165.068	74831.	41535.015	83102.
31904.004	69904.	34906.003	71705.	41165.069	74832.	41535.018	83103.
31906.001	70001.	34906.004	71706.	41165.251	74851.	41535.034	83104.
31906.002	70002.	34906.005	71707.	41165.252	74852.	43840.001	43901.
31906.003	70003.	34906.008	71708.	41165.701	81401.	43840.002	43902.
31906.004	70004.	34906.009	71709.	41200.001	75501.	47450.002	77701.
31906.005	70005.	34914.003	72103.	41200.002	75502.	47450.004	77702.
31906.006	70006.	34914.005	72105.	41200.101	75504.	52580.005	77901.
31906.007	70007.	34914.006	72106.	41200.102	75505.	52585.008	77903.
31952.004	70104.	34914.007	72107.	41200.103	75506.	55510.021	83501.
31952.019	70116.	34914.015	72125.	41200.105	75508.	55510.040	83502.
31954.001	70301.	34914.016	72121.	41205.002	75602.	58060.012	78110.
31954.002	70302.	34914.018	72128.	41205.003	75603.	58602.008	78601.
31954.004	70304.	34914.019	72129.	41205.051	75604.	61400.001	78807.
31954.005	70305.	34924.001	72110.	41205.101	75605.	61400.002	78808.
31954.010	70309.	34924.005	72114.	41205.102	75606.	61400.005	78809.
31954.011	70310.	34924.006	72115.	41205.151	75607.	61405.002	78811.
31954.012	70311.	34924.007	72116.	41205.152	75608.	61440.487	79004.
31954.017	70314.	34924.008	72117.	41201.001	75701.	61440.489	79005.
31954.021	70318.	34926.001	72301.	41252.001	76201.	61440.490	79006.
31956.001	70501.	34926.002	72302.	41252.002	76202.	64235.001	79401.
31956.002	70502.	34926.009	72303.	41252.003	76203.	64235.005	79405.
31956.003	70503.	34926.010	72304.	41252.004	76204.	64235.006	79406.
31956.004	70504.	34936.001	72701.	41252.005	76205.	64235.009	79408.
31956.005	70505.	34936.002	72702.	41252.007	76206.	64235.010	79409.
31956.008	70507.	34944.001	72901.	41252.009	76208.	64235.011	79410.
31956.010	70508.	34944.003	72902.	41252.010	76209.	64235.015	79411.
31956.011	70509.	34944.004	72903.	41252.011	76210.	64240.001	79501.
31956.012	70510.	41110.001	73401.	41252.012	76211.	64240.002	79502.
31956.013	70511.	41112.001	73601.	41252.013	76212.	64240.004	79503.
31962.022	70720.	41115.001	73403.	41252.018	76215.	64240.005	79504.
31962.029	70725.	41115.002	73404.	41252.019	76216.	64240.006	79505.
31964.001	70901.	41115.003	73405.	41252.020	76217.	64240.007	79506.
31964.002	70902.	41115.004	73406.	41252.023	76219.	64240.008	79507.
31964.003	70903.	41115.801	80201.	41252.024	76220.	64240.009	79508.
31964.005	70905.	41120.001	73801.	41252.025	76221.	64240.010	79509.
31964.008	70907.	41120.002	73802.	41252.026	76222.	64240.011	79510.
31964.009	70908.	41120.006	73805.	41252.030	76226.	64240.012	79511.
31964.010	70909.	41120.807	80407.	41252.032	76227.	64240.013	79512.
31964.012	70911.	41120.851	80501.	41252.033	76228.	64240.014	79513.
31964.014	70913.	41120.853	80503.	41254.002	76401.	64240.015	79514.
31964.015	70914.	41121.001	74001.	41254.003	76402.	64240.016	79515.
31964.018	70917.	41121.051	74002.	41254.004	76403.	64240.017	79516.
31964.023	70921.	41160.001	74401.	41254.005	76404.	64240.018	79517.
31964.042	70933.	41160.002	74402.	41254.006	76405.	64290.001	79701.
31964.043	70934.	41160.003	74403.	41254.007	76406.	64290.007	79703.
31966.001	71101.	41160.004	74404.	41254.008	76407.	64290.008	79704.
31966.002	71102.	41160.005	74405.	41254.009	76408.	64290.014	79706.
31966.003	71103.	41160.007	74407.				

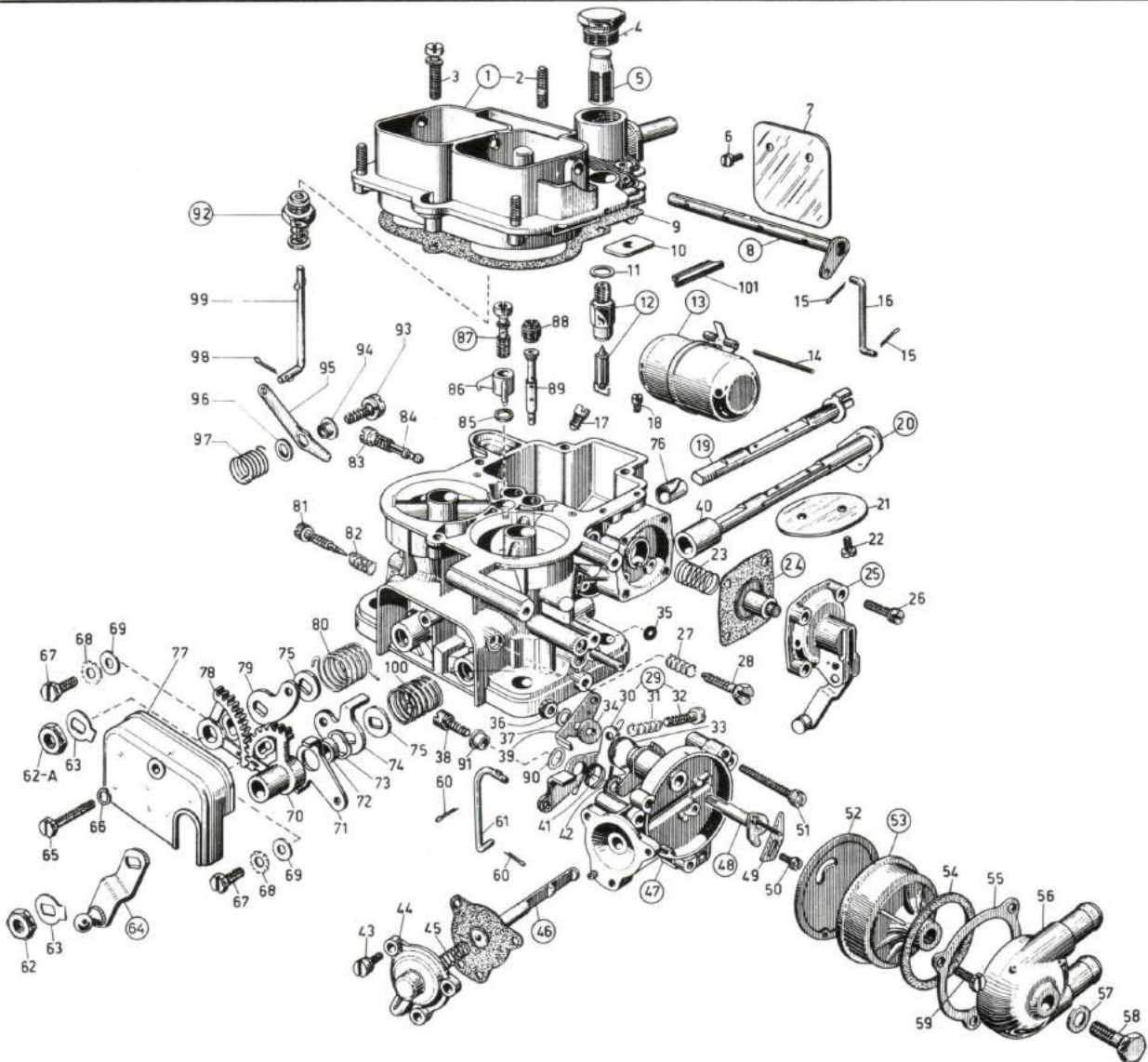


WEBER CARBURETORS

Type 40 DFAV 1

Standard Equipment on

FORD CAPRI V6



ORDERS : When placing orders, always mention reference number of requested parts, as well as type and number of carburetor.

Key Nr.	Qty	PART NAME	Ref. number		Key Nr.	Qty	PART NAME	Ref. number	
			WEBER	FORD				WEBER	FORD
1	1	Carburetor cover assembly, including :	31716.092	682F-952F-A-A	27	1	Spring (CARB. IDLING ADJUSTING SCREW)	47600.007	116E-9578
2	3	— stud bolt (CARB. TO AIR CLEANER)	64955.002	2725E-9A659-A	28	1	Screw (CARB. IDLING ADJUSTMENT)	64625.001	2725E-9B538-A
3	5	Screw and washer assy fixing cover	64700.005	113022-ES8	29	1	Lever assy (CARB. FAST IDLING) adjusting, including :	45041.001	2725E-9538-A
4	1	Strainer inspection plug	61002.018	2725E-9A540-A	30	1	— Lever (CARB. FAST IDLING) adjusting	45039.001	2725E-9B792-A
5	1	Strainer assy (CARB. FUEL INLET)	37022.003	2735E-9L541-A	31	1	— Spring (CARB. FAST IDLE ADJUSTING SCREW)	47600.007	116E-9578-B
6	4	Screw (CARB. CHOKE PLATE)	64525.003	2725E-9A767-A	32	1	— Screw (CARB. FAST IDLE ADJUSTMENT)	64590.001	111642-ES8
7	2	Plate (CARB. CHOKE)	64010.007	2725E-9545-B	33	1	Spring (CARB. AUTO-CHOKE SHAFT)	47610.010	2725E-9A590-A
8	1	Shaft & lever assy (CARB. CHOKE)	10020.204	2725E-9546-A	34	1	Spacer (CARB. AUTO-CHOKE SHAFT)	55555.006	2725E-9714-A
9	1	Gasket (CARB COVER TO THROTTLE BODY)	41705.031	682-9519-A-A	35	1	— O ring seal (CARB. AUTO-CHOKE BODY)	41565.008	116620-ES
10	1	Dust seal (CARB. AIR CLEANER)	52135.010	2725E-9B687-A	36	1	Nut (CARB. AUTO - CHOKE LEVER FIXING)	34705.001	114477-ES8
11	1	Gasket (CARB. FUEL INTAKE VALVE)	41535.015	116E-9B539	37	1	Washer-spring (CARB. AUTO - CHOKE LEVER - FIXING NUT)	55525.003	112511-ES8
12	1	Needle valve assy (CARB. FUEL INLET)	64240.016*	2725E-9564-A	38	1	Screw and washer assy (CARB. FAST IDLE LEVER PIVOT)	64700.014	220006-ES
13	1	Float assy (CARB.)	41015.004	2725E-9555-A	39	1	Lever (CARB. AUTO-CHOKE)	45032.006	2725E-9K737-A
14	1	Shaft (CARB. FLOAT LEVER)	52000.015	2725E-9558-A	40	1	Spacer (CARB. SHAFT RIGHT HAND)	12750.016	2725E-9K750-A
15	2	Split pin (CARB. AUTO CHOKE CONTROL ROD)	32610.006	119724-ES2	41	1	Spring (CARB. FAST IDLE LEVER)	47610.018	2725E-9L542-B
16	1	Rod (CARB. AUTO - CHOKE) OPERATING	61280.004	2725E-9K736-A	42	1	Washer (CARB. FAST IDLE LEVER PIVOT SCREW)	55510.013	250005-ES
17	2	Main Jet	41120.001*	2725E-9533-A	43	3	Screw & washer assy (CARB. AUTO-CHOKE COVER)	64700.007	111643-ES8
18	1	Plug (CARB. ACCELERATOR PUMP DISCHARGE)	61015.005	2725E-9L544-B	44	1	Cover (CARB. AUTO-CHOKE)	32384.001	2725E-9F594-A
19	1	Shaft (CARB. THROTTLE LEFT HAND)	10015.482	682F-9582-A-A	45	1	Spring (CARB. AUTO-CHOKE VACUUM DIAPHRAGM)	47600.003	2725E-9907-A
20	1	Shaft assy (CARB. THROTTLE RIGHT HAND)	10015.430	2725E-9582-C	46	1	Vacuum diaphragm and shaft assy (CARB. AUTO CHOKE)	47407.008	2725E-9L543-A
21	2	Plate (CARB. THROTTLE)	64005.011	2725E-9585-B					
22	4	Screw (CARB. THROTTLE PLATE)	64520.027	2725E-9E519-A					
23	1	Self-loading-spring (CARB. ACCEL. PUMP)	47600.107	2725E-9D598-A					
24	1	Diaphragm assy (CARB. ACCEL. PUMP)	47407.027	2725E-9B559-B					
25	1	Cover assy (CARB. ACCEL. PUMP)	32486.015	2725E-9508-B					
26	4	Screw & washer assy (ACCEL. PUMP COVER FIXING)	64700.004	113025-ES8					

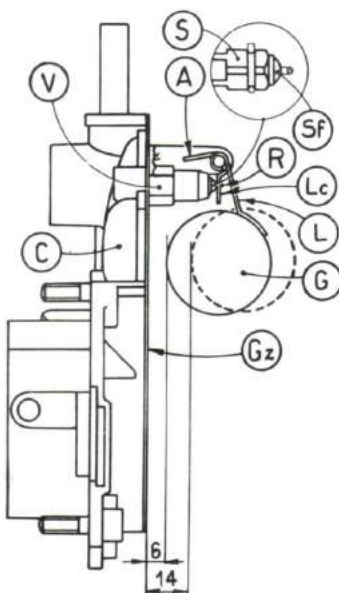
Key Nr.	Q.ty	PART NAME	Ref. number		Key Nr.	Q.ty	PART NAME	Ref. number	
			WEBER	FORD				WEBER	FORD
47	1	Body assy (CARB. AUTO-CHOKE)	57804.001	2725E-9K728-A	72	1	Bushing (CARB. THROTTLE SHAFT)	12750.001	2725E-9B508-A
48	1	Shaft & lever assy (CARB. AUTO CHOKE)	10085.001	2725E-9L554-A	73	1	Washer-wave (CARB. THROTTLE SHAFT)	55530.002	112513-ES
49	1	Plate (CARB. AUTO-CHOKE SHAFT ADJUSTING)	52135.015	2725E-9L545-A	74	1	Lever (CARB. FULL THROTTLE) stop	45032.039	2725E-9L548-A
50	1	Screw (CARB. AUTO-CHOKE SHAFT ADJUSTING PLATE)	64520.001	111644-ES2	75	2	Washer (CARB. THROTTLE LEVER & SHAFT ASSY)	55555.016	113428-ES8
51	3	Screw & washer assy (AUTO CHOKE BODY TO CARB. THROTTLE BODY)	64700.008	111645-ES8	76	4	Bearing (CARB. THROTTLE SHAFT R. H. AND L. H.)	52130.010	2725E-9992-A
52	1	Gasket (CARB. AUTO-CHOKE BODY)	41640.005	2725E-9K729-A	77	1	Cover (CARB. GEARED SECTORS)	32464.001	2725E-9L549-A
53	1	Thermostat assy (CARB. AUTO-CHOKE)	57804.005	2725E-9K731-B	78	1	Sector-carb geared lh.	58202.003	2725E-9L547-A
54	1	Gasket (CARB. WATER CHAMBER TO THERMOSTAT ASSY)	41555.001	2725E-9K733-A	79	1	Lever (CARB. GEARED SECTOR ADJUSTING)	45025.024	2725E-9L550
55	1	Ring (CARB. THERMOSTAT ASSY) locking	52135.006	2725E-9K738-A	80	1	Spring-throttle control return-lh	47610.012	2725E-9B848-D
56	1	Water chamber (CARB. AUTO-CHOKE)	32444.002	2725E-9K732-B	81	2	Needle screw (CARB. IDLE ADJUSTMENT)	64750.001	116E-9541-B
57	1	Washer (CARB. WATER CHAMBER FIXING SCREW)	41530.002	112515-ES	82	2	Spring (CARB. IDLE ADJUSTING NEEDLE)	47600.007	116E-9578
58	1	Bolt (CARB. AUTO-CHOKE WATER CHAMBER)	64615.001	111646-ES8	83	2	Holder (IDLING JET)	52570.005	116E-9K509
59	3	Screw (CARB. THERMOSTAT ASSY TO AUTO-CHOKE BODY)	64615.005	111647-ES8	84	2	Idle jet	41160.003*	2725E-9596-B
60	2	Split-pin (CARB. FAST IDLE ROD)	32610.006	119724-ES2	85	1	Gasket (CARB. NOZZLE BAR)	41530.012	116E-9926
61	1	Rod (CARB. FAST IDLE)	61280.041	2725E-9598-B	86	1	Accelerator pump jet	41252.013*	2725E-9940-A
62	2	Nut (CARB. THROTTLE SHAFT)	34715.014	114212-ES	87	1	Valve assy (CARB. ACCELERATOR PUMP)	64290.005	2725E-9902-A
63	2	Lock washer (CARB. THROTTLE SHAFT)	55520.002	113431-ES	88	2	Air corrector jet	41360.001*	2725E-9K511-B
64	1	Lever (CARB. THROTTLE)	45027.089	702F-9583-B-A	89	2	Emulsion tube	61440.166*	2725E-9971-A
65	1	Screw (CARB. GEARED SECTOR COVER)	64610.004	111649-ES8	90	1	Washer-wave (CARB. AUTO CHOKE)	55530.005	110996-ES
66	1	Washer-spring (CARB. GEARED SECTOR COVER)	55525.007	253002-ES	91	1	Bush (CARB. FAST IDLING ADJUSTING LEVER)	12765.005	2725E-9L588-A
67	2	Screw (CARB. GEARED SECTOR ADJUSTING)	64615.003	111648-ES2	92	1	Power valve	64372.007	682F-9M597-A-A
68	2	Washer-external tooth (CARB. GEARED SECTOR ADJUSTING SCREW)	55535.001*	112527-ES	93	1	Lever fixing screw	247000.014	220000-ES
69	2	Washer (CARB. GEARED SECTOR ADJUSTING SCREW)	55510.007	112516-ES2	94	1	Bushing for lever	12775.017	682F-9P516-A-A
70	1	Lever (CARB. FAST IDLING)	58202.011	2725E-9L546-B	95	1	Valve control lever	45101.019	682F-9H597-A-A
71	1	Sector-carb geared rh.	45039.003	2725E-9B792-B	96	1	Washer for lever	55510.029	E630-171-571
					97	1	Spring for lever	47610.033	682F-9C555-A-A
					98	1	Split-pin for rod	32610.006	119724-ES2
					99	1	Valve control rod	61280.065	682F-9D597-A-A
					100	1	Right shaft return spring	47610.017	682F-9B848-A-A
					101	1	Dust seal plug	61070.002	692F-9D621-A-A
							Master repair kit	92.0100.05	—
							Tune up kit	92.1122.05	—
							Gasket kit	92.2138.05	—

(*) Calibrated parts

SETTING

Key Nr.	Q.ty	PART NAME	Ref. number		Setting in mm
			WEBER	FORD	
—	—	CHOKE TUBES (INTEGRAL)	—	—	28
—	—	FUEL DISCHARGE UNITS	—	—	4,50
17	2	MAIN JET	41120.001	2725E-9533-A	1,80
88	2	AIR CORRECTOR JETS	41360.001	2725E-9K511-B	1,85
89	2	EMULSION TUBES	61440.166	2725E-9971-A	F 2
84	2	IDLE JETS	41160.003	2725E-9596-B	0,60
86	1	ACCELERATOR PUMP JET	41252.013	2725E-9940-A	0,50
12	1	NEEDLE VALVE	64240.016	2725E-9564-A	2,50
—	—	FLOAT LEVEL SETTING	—	—	6 (**)

Messrs. E. WEBER do not answer for eventual working anomalies due to arbitrary modifications introduced into the above setting



(**) DIRECTIONS FOR LEVELLING THE FLOAT

It's essential that the following direction be complied with in order to obtain correct levelling of the float :

- Make sure that the weight of the float (G) is the correct one (gr. 11) that float can freely slide on the axis and doesn't show any pit.
- Make sure that needle valve (V) is tightly screwed in its housing and that pin ball (Sf) of the dampening device, incorporated in the needle (S), is not jammed.
- Keep the carburetor cover (C) in vertical position as indicated in the figure since the weight of the float (G) could lower the pin ball (Sf) fitted on the needle (S).
- With carburetor cover (C) in vertical position and float clip (Lc) in light contact with the pin ball (Sf) on the needle (S), the distance of float (G) from upper surface of carburetor cover (C) with gasket (Gz) must measure **mm. 5,5÷6**.
- After the levelling has been done, check that the stroke of float (G) is **8 mm**. If necessary adjust the position of the lug (A).
- Check that return hook (R) of the needle (S) allows it free movement in its seat.
- Should the float (G) not be correctly placed, modify the position of the float tab (L) until the required point is reached, taking care that it does not have any indentations on the contact surface which might affect the free movement of the needle itself. Fit up the carburetor cover making sure that float can move without any hindrance or friction.

NOTE - The operations of levelling the float must be carried out whenever it is necessary to replace float or fuel inlet needle valve : in this last case it is advisable to replace also the sealing gasket, making sure that the new needle valve is tightly screwed in its housing.

Soc. p. Az. EDOARDO WEBER - Fabbrica Italiana Carburatori

Works: 40134 BOLOGNA - Via Timavo, 33 - Telephone 41.79.95 (Italy) - TELEX: 51119 WEBER BO - Cable address: WEBER BOLOGNA



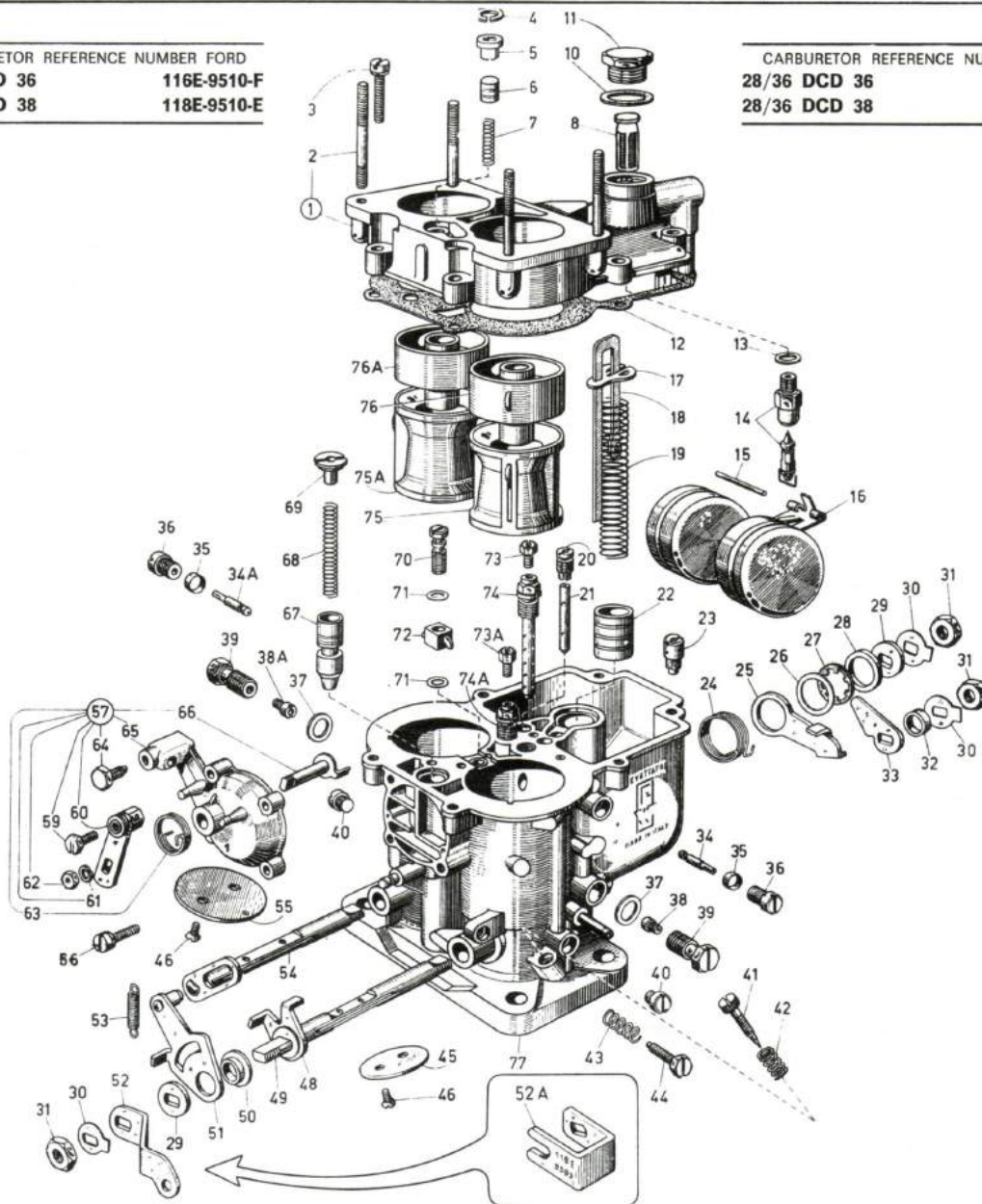
WEBER CARBURETORS

Type **28/36 DCD 36 - 28/36 DCD 38**

Standard Equipments on
FORD CAPRI G.T. SPECIAL
FORD CORTINA G.T. SPECIAL

CARBURETOR REFERENCE NUMBER FORD	
28/36 DCD 36	116E-9510-F
28/36 DCD 38	118E-9510-E

CARBURETOR REFERENCE NUMBER WEBER	
28/36 DCD 36	22580.032
28/36 DCD 38	22580.033



ORDERS: When placing orders, always mention reference number of requested parts, as well as type and number of carburetor.

Key Nr.	Qty.	PART NAME	Ref. number		Key Nr.	Qty.	PART NAME	Ref. number	
			WEBER	FORD				WEBER	FORD
1	1	Carburetor cover, including:	31716.054	116E-9524-B	24	1	Loose lever return spring	47610.050	116E-9B564
2	4	Stud bolt	64955.007	116E-9A659	25	1	Loose lever for pump control	45039.018	116E-9D591
3	6	Carb. cover fixing screw	64700.005	113022-ES8	26	1	Spring ring washer	55510.041	113430-ES
4	1	Lock washer, starter plunger seat	10140.010	113426-ES	27	1	Toothed spring ring	10140.401	113429-ES
5	1	Starter plunger seat	12775.037	116E-9K505	28	1	Spring ring washer	55510.040	113427-ES
6	1	Starter plunger	58600.007	116E-9K506	29	2	Shafts distance washer	55555.016	113428-ES8
7	1	Starter plunger spring	47600.108	116E-9K507	30	3	Lock washer	55520.002	113431-ES
8	1	Strainer	37022.002	2725E-9L541-A	31	3	Shafts fixing nut	34715.014	114212-ES8
10	1	Filter plug gasket	41530.024	116E-99722	32	1	Shaft distance bushing	12750.058	116E-9715
11	1	Filter plug	61002.010	116E-9A540	33	1	Pump control cam	14850.009	116E-9529
12	1	Carb. cover gasket	41705.002	116E-9519	34	1	Primary idling jet	41160.001*	—
13	1	Needle valve gasket	41535.015	116E-9B539	34A	1	Secondary idling jet	41160.001*	116E-9596-B
14	1	Needle valve	64240.008*	116E-9564	35	2	Idling jets-holder sealing ring	41555.004	116E-9K508
15	1	Float fulcrum pin	52000.001	116E-9558	36	2	Idling jet-holder	52570.005	116E-9K509
16	1	Float	41030.011	116E-9555	37	2	Main jets-holder gasket	41540.001	113438-ES
17	1	Plunger spring retaining plate	52140.002	116E-9688	38	1	Primary main jet	41120.001*	116E-9533-A
18	1	Pump control rod	10400.024	116E-9B512	38A	1	Secondary main jet	41120.001*	116E-9533-B
19	1	Pump plunger spring	47600.106	116E-9D598	39	2	Main jet-holder	52590.001	116E-9K510
20	1	Starting air adjustment jet	41370.005	116E-9K511	40	2	Progression orifices inspection screw	61015.001	113024-ES
21	1	Starting jet	41200.101*	116E-9971-B	41	1	Idling mixture adjusting screw	64750.001	116E-9541-B
22	1	Pump plunger	58602.005	116E-9B544	42	1	Spring for idling mixture adj. screw	47600.007	116E-9578
23	1	Intake valve with exhaust orifice	64290.001*	116E-9573-B	43	1	Spring for throttle adjusting screw	47600.084	116E-9B896

Mod. 90.0242.42

Key Nr.	Qty.	PART NAME	Ref. number		Key Nr.	Qty.	PART NAME	Ref. number		
			WEBER	FORD				WEBER	FORD	
44	1	Throttle adjusting screw	64625.002	116E-9B538	64	1	— Screw securing sheath	64605.017	113027-ES	
45	1	Primary throttle	64005.017	116E-9S85-B	65	1	— Sheat support cover	32534.003	116E-9849	
46	4	Throttles fixing screw	64570.008	116E-9E519	66	1	— Starting valve control shaft	10085.004	116E-9A753	
	1	Stop sector	45039.017	116E-9B792	67	1	Starting valve	64330.001	116E-9K502	
49	1	Primary shaft	10000.439	116E-9S82	68	1	Spring for starting valve	47600.051	116E-9K503	
50	1	Primary sector bushing	12775.027	116E-9B508	69	1	Spring guide and retainer	52030.001	116E-9K504	
51	1	Primary sector	45131.002	116E-99602	70	1	Pump delivery valve	64290.003	116E-9A096	
52	1	Throttles control lever (28/36 DCD 36)	45025-052	116E-9S83-C	71	2	Pump jet gasket	41530.012	116E-9926	
52A	1	Throttles control lever (28/36 DCD 38)	45136.016	118E-9S83	72	1	Pump jet	41252.003*	116E-9940	
53	1	Primary sector return spring	47605.011	116E-9B848	73	1	Primary air corrector jet	41370.002*	116E-9K512-A	
54	1	Secondary shaft	10015.436	116E-9S81	73A	1	Secondary air corrector jet	41370.002*	116E-9K512-B	
55	1	Secondary throttle	64005.088	116E-9A598	74	1	Primary emulsioneing tube	61455.152*	116E-9991	
56	4	Starting control fixing screw	64700.004	113025-ES	74A	1	Secondary emulsioneing tube	61455.152*	116E-9991	
57	1	Starting control, including:	32536.013	—	75	1	Secondary choke	34896.003*	116E-9E514-A	
59	1	— Screw securing wire	64615.004	113026-ES	75A	1	Primary choke	34896.002*	116E-9E514-B	
60	1	— Starting control lever	45027.050	116E-9E523	76	1	Primary Auxiliary Venturi	31856.001*	116E-9S86-B	
61	1	— Spring washer	55525.010	113474-ES	76A	1	Secondary Auxiliary Venturi	31856.001*	116E-9S86-B	
62	1	— Starting lever fixing nut	34715.010	114214-ES	77	—	Carburetor Body	NOT SUPPLIED		
63	1	— Lever return spring	47610.004	116E-9C513						
(*) Calibrated parts								Master repair kit	92.2028.05	—
								Tune up kit	92.1033.05	—
								Gasket kit	92.0027.05	—

SETTING

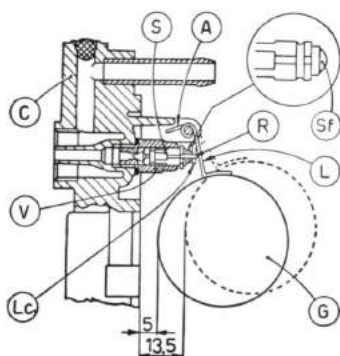
Key Nr.	Q.ty	Ref. number		PART NAME	Setting in mm.
		WEBER	FORD		
75	1	34896.003	116E-9E514-A	Primary choke	26
75A	1	34896.002	116E-9E514-B	Secondary choke	27
76	1	31856.001	116E-9S86-B	Primary Auxiliary Venturi	4.50
76A	1	31856.001	116E-9S86-B	Secondary Auxiliary Venturi	4.50
38	1	41120.001	116E-9S33-A	Primary main jet	1.40
38A	1	41120.001	116E-9S33-B	Secondary main jet	1.55
34	1	41160.001	—	Primary idling jet	0.55
34A	1	41160.001	116E-9S96-B	Secondary idling jet	0.70
72	1	41252.003	116E-9940	Pump jet	0.70
21	1	41200.101	116E-9971-B	Starting jet	F1/2,05
74	1	61455.152	116E-9991	Primary emulsioneing tube	F 30
74A	1	61455.152	116E-9991	Secondary emulsioneing tube	F 30
73	1	41370.002	116E-9K512-A	Primary air corrector jet	2.30
73A	1	41370.002	116E-9K512-B	Secondary air corrector jet	1.80
20	1	41370.005	116E-9K511	Air starting jet	1.00
14	1	64240.008	116E-9S64	Needle valve	1.75
23	1	64290.001	116E-9S73-B	Intake valve with exhaust orifice	0.50
—	—	—	—	Float levelling	5 (**)

Messrs. E. WEBER do not answer for eventual working anomalies due to arbitrary modifications introduced into the above setting.

(**) DIRECTIONS FOR LEVELLING THE FLOAT

It is essential that the following directions be complied with in order to obtain correct levelling of the float:

- Make sure that the weight of the float (G) is the correct one (gr. 18), that float can freely slide on the axis and does not show any pit.
- Make sure that needle valve (V) is tightly screwed in its housing and that pin ball (Sf) of the dampening device, incorporated in the needle (S), is not jammed.



- Keep the carburetor cover (C) in vertical position as indicated in figure since the weight of float (G) could lower the pin ball (Sf) fitted on the needle (S).
- With carburetor cover (C) in vertical position and float clip (Lc) in light contact with the pin ball (Sf) of the needle (S), the distance of both half-floats (G) from upper surface of Weber of carburetor cover (C), without gasket, must measure 5 mm. (Weber gauge nr. 88839.00.0308).
- After the levelling has been done, check that the stroke of float (G) is 8,5 mm. if necessary adjust the position of the lug (A).
- Check that the return hook (R) of the needle (S) allows its free movement in its seat.
- Should the float (G) not be correctly placed, modify the position of the tabs (L) of the float until the required point is reached, taking care that the tab (Lc) is perpendicular to the needle axis (S) and that it does not have any indentations on the contact surface which might affect the free movement of the needle itself.
- Fit up the carburetor cover making sure that float can move without any hindrance or friction.

NOTE - The operations of levelling of float must be carried out whenever it is necessary to replace float or needle valve: in this last case it is advisable to replace also the sealing gasket, making sure that the new needle valve is tightly screwed in its housing.

Soc. p. Az. EDOARDO WEBER - Fabbrica Italiana Carburatori

Works: 40134 BOLOGNA - Via Timavo, 33 - Telephone 41.79.95 (Italy) - TELEX: 51119 WEBER BO - Cable address: WEBER BOLOGNA



WEBER VERGASER

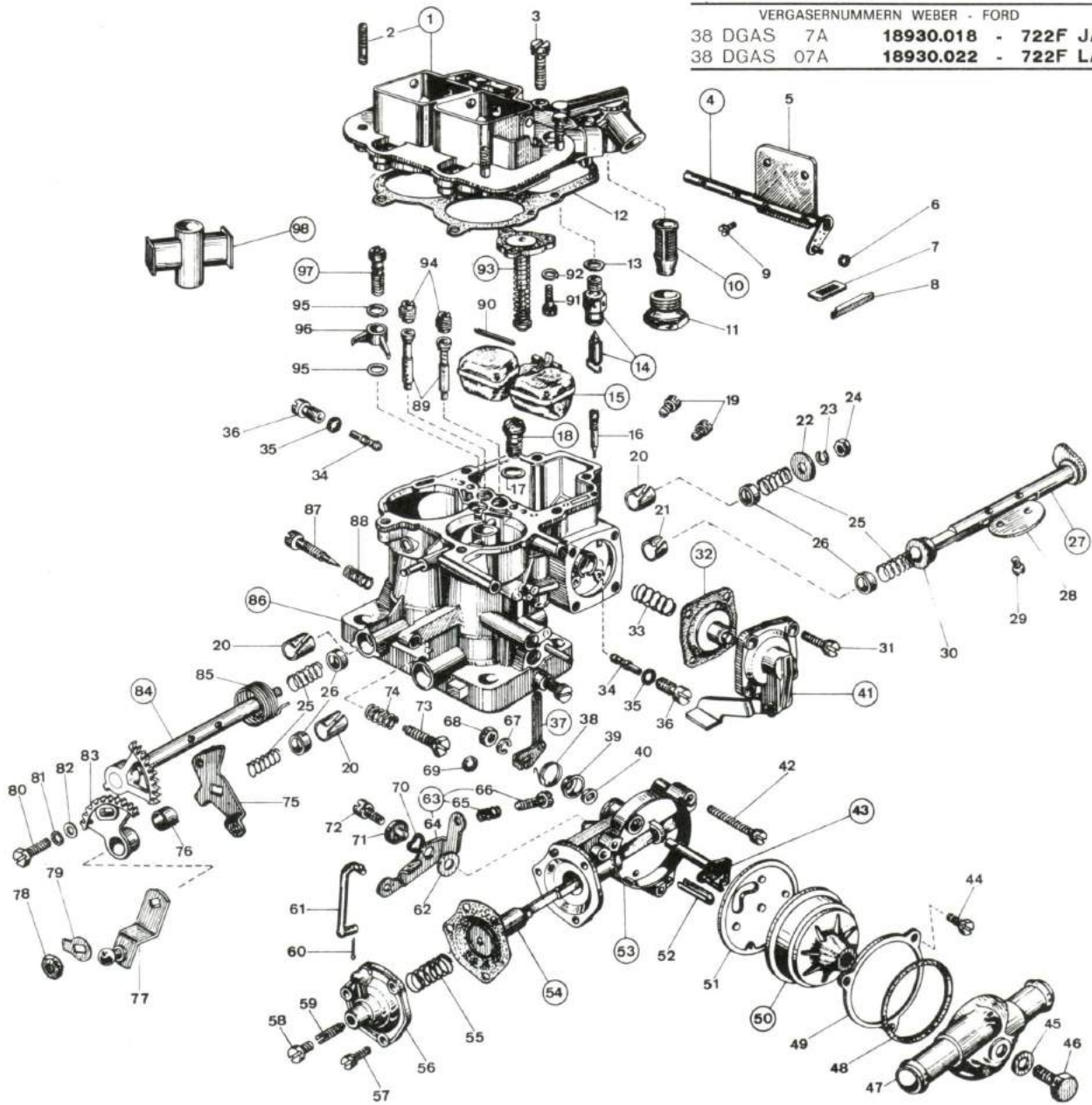
Typ **38 DGAS 7A - 07A**

Zum Einbau auf
FORD CAPRI 3000 V6

Automatisches Getriebe
Mechanisches Getriebe

VERGASERNUMMERN WEBER - FORD

38 DGAS 7A **18930.018 - 722F JA**
38 DGAS 07A **18930.022 - 722F LA**



BESTELLUNGEN: Bei Erteilung von Bestellungen bitte stets Bestellnummer und eventuelle Kalibrierung angeben, sowie Typ und Nummer des Vergasers.

Abb.	Anzahl	BEZEICHNUNG	Bestellnummer		Abb.	Anzahl	BEZEICHNUNG	Bestellnummer	
			WEBER	FORD				WEBER	FORD
1	1	Vergaserdeckel, komplett mit:	31716.142	722F-9524-AA	23	1	Federscheibe	55525.001	E630171-S71
2	4	Stiftschraube	64955.002	2725E-9A659-A	24	1	Befestigungsmutter für Welle 2. Stufe	34705.001	114477-ES8
3	6	Befestigungsschraube für Deckel	64700.001	E802028-S8	25	4	Büchsenfeder	47600.027	71HF-9P648-AA
4	1	Starterwelle	10020.221	71HF-9546-AA	26	4	Wellenbüchse	12750.085	71HF-9B508-AA
5	2	Starterklappe	64010.007	2725E-9545-B	27	1	Drosselklappenwelle 1. Stufe	10015.270	722F-9919-BA
6	1	Spanning	10140.501	E860041-S	28	2	Drosselklappe	64005.015	722F-9585-AA
7	1	Staubschutzplatte	52135.018	71HF-9B687-AA	29	4	Befestigungsschraube für Drosselklappe	64520.027	722F-9N558-AA
8	1	Staubschutzstopfen	61070.002	692F-9D621-AA	30	1	Abstandbüchse	12765.047	71HF-9B508-BA
9	4	Befestigungsschraube für Starterklappe	64525.003	2725E-9A767-A	31	4	Befestigungsschraube für Pumpendeckel	64700.006	E802029-S8
10	1	Kraftstofffilter	37022.003	2725E-9L541-A	32	1	Pumpenmembran	47407.048	71HF-9B559-AA
11	1	Verschluss-Schraube	61002.018	2725E-9A540-A	33	1	Pumpenfeder	47600.107	2725E-9D598-A
12	1	Deckeldichtung	41705.040	722F-9519-AA	34	2	Leerlaufdüse	41160.003*	2724E-9596-B
13	1	Dichtring	41535.015	116E-9B539	35	2	Dichtung für Leerlaufdüsenenträger	41565.002	E834035-S
14	1	Nadelventil	64240.017*	722F-9564-AA	36	2	Leerlaufdüsenenträger	52670.006	71HF-9K509-AA
15	1	Schwimmer	41030.019	71HF-9555-BA	37	1	Starterhebel	45034.090	71HF-9K737-AA
16	1	Verschlusschraube für Pumpenablass	64900.001	2725E-9L544-A	38	1	Nockenfeder für Schnell Leerlauf	47610.080	71HF-9L542-AA
17	1	Dichtring	41530.013	692F-9M598-AA	39	1	Federteller	58000.018	71HF-9J548-AA
18	1	Nadelventil für Vollast	64235.016	692F-9M597-AA	40	1	Scheibe für Welle	55555.029	71HF-9714-AA
19	2	Hauptdüse	41120.001*	692F-9533-AA	41	1	Pumpendeckel	32486.037	71HF-9508-AA
20	3	Wellenbüchse	52130.010	722F-9B508-BA	42	3	Befestigungsschraube für Startvorrichtung	64700.008	111645-ES8
21	1	Wellenbüchse	52130.011	722F-9B508-CA	43	1	Welle für Startvorrichtung	10085.033	71HF-9L554-AB
22	1	Wellenscheibe (2. Stufe)	55510.081	722F-9F590-AA	44	3	Schraube für Haltering	64615.005	111647-ES8

Abb.	Anzahl	BEZEICHNUNG	Bestellnummer		Abb.	Anzahl	BEZEICHNUNG	Bestellnummer	
			WEBER	FORD				WEBER	FORD
45	1	Dichtring	41530.002	112515-ES	73	1	Einstellschraube für Drosselklappen	64625.017	71HF-9B538-AA
46	1	Befestigungsschraube für Wassergehäuse	64610.006	E800231-S82	74	1	Feder für Einstellschraube	47600.007	116E-9578
47	1	Wassergehäuse	32444.005	71HF-9K732-AA	75	1	Betätigungshebel für Zahnsegment	45046.023	722F-9L548-AA
48	1	Dichtung	41555.001	2725E-9K733-AA	76	1	Büchse für Zahnsegment	12750.092	722F-9B508-AA
49	1	Haltering für Gehäuse	52135.006	2725E-9K738-A	77	1	Betätigungshebel für Drosselklappen	45027.106	722F-9E552-AA
50	1	Gehäuse mit Bi-Metallfeder	57804.094	722F-9K731-AA	78	1	Befestigungsschraube für Welle 1. Stufe	34715.014	114212-ES8
51	1	Isolierdichtscheibe	41640.005	2725E-9K729-A	79	1	Sicherungsscheibe	55520.002	113431-ES
52	1	Lagerscheibe für Welle	52130.012	71HF-9851-AA	80	1	Befestigungsschraube für Zahnsegment	64615.002	722F-9P709-AA
53	1	Gehäuse der Startvorrichtung	57804.082	722F-9K728-AA	81	1	Zahnscheibe	55535.001	112527-ES
54	1	Membran	47407.093	722F-9L543-AA	82	1	Scheibe	55510.007	112516-ES2
55	1	Membranfeder	47600.141	71HF-9P652-AA	83	1	Zahnsegment (1. Stufe)	58202.024	722F-9L546-AA
56	1	Membrandeckel	32384.020	71HF-9F594-AA	84	1	Drosselklappenwelle 2. Stufe	10015.251	722F-9C885-AA
57	3	Befestigungsschraube für Membrandeckel	64700.007	111643-ES8	85	1	Rückzugfeder für Welle	47610.089	722F-9B569-AA
58	1	Verschluss-Schraube	61015.003	E802030-S	86	1	Vergasergehäuse	nicht lieferbar	
59	1	Einstellschraube für Membran	64595.005	71HF-9P651-AA	87	2	Leerlaufgemischregulierschraube	64750.001	116E-9541-B
60	1	Splint	32610.005	260000-ES	88	2	Feder	47600.007	116E-9578
61	1	Betätigungsstange (schnell Leerlauf)	61280.082	71HF-9598-AA	89	2	Mischrohr	61440.216*	71HF-9P653-AA
62	1	Scheibe	55510.003	E630021-S82	90	1	Schwimmerhachse	52000.015	2725E-9K511-B
63	1	Schnell Leerlauf Loserhebel, komplett:	45041.053	71HF-9538-AA	91	3	Befestigungsschraube	64700.007	111643-ES8
64	1	— Hebel	45039.056	71HF-9B792-AA	92	3	Scheibe	55510.038	E630170-S82
65	1	— Feder	47600.007	116E-9578	93	1	Vollastanreicherungs Vorrichtung	57804.025	692F-9H547-AA
66	1	— Schraube	64590.004	71HF-9P524-AA	94	2	Luftkorrekturdüse	41360.001*	2725E-9K511-B
67	1	Federscheibe	55525.003	112511-ES-8	95	2	Dichtring für Pumpendüse	41530.012	116E-9926
68	1	Befestigungsmutter	34715.016	E620011-S82	96	1	Pumpendüse	41252.013*	722F-9A574-AA
69	1	Dichtung	41565.008	116620-ES	97	1	Pumpendruckventil	64290.019	722F-9902-AA
70	1	Gewellte Scheibe	55530.005	110996-ES	98	2	Zerstäuber	31966.021*	nicht lieferbar
71	1	Büchse für Loserhebel	12765.042	692F-9L588-AA					
72	1	Schraube für Hebel	64700.014	220006-ES8					

(*) Verschiedene Einstell-Teile

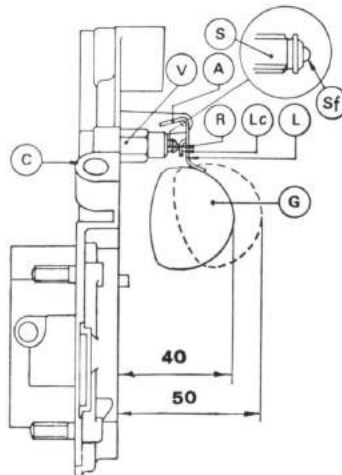
Satz Dichtungen	92.0106.05	—
Satz für normale Überholung	92.1135.05	—
Satz für komplette Überholung	92.2165.05	—

EINSTELLUNG

Abb.	Anzahl	BEZEICHNUNG	Bestellnummer WEBER	Kalibrierung in mm.
—	—	Lufttrichter	—	27
98	2	Zerstäuber	31966.021	4,00
19	2	Hauptdüse	41120.001	1,45
94	2	Luftkorrekturdüse	41360.001	1,85
89	2	Mischrohr	61440.216	F 50
34	2	Leerlaufdüse	41160.003	0,45
96	1	Pumpendüse	41252.013	0,70
14	1	Nadelventil	64240.017	2,50
—	—	Positive Drosselklappenöffnung der 1. Stufe bei eingeschaltetem Starter	—	0,65 ÷ 0,70

Die Firma E. WEBER AG. kommt für keine Betriebsstörungen auf, die an willkürlichen Abänderungen obiger Einstellungen zuzuschreiben sind.

ANWEISUNGEN ZUR NIVEAUREGULIERUNG DES SCHWIMMERS



Während man den Deckel (C) senkrecht hält und den Lappen (Lc) in leichtem Kontakt mit der Kugel (Sf) der Nadel (S), muss der Lappen senkrecht zur Nadelachse stehen.

Die genaue Stellung wird dadurch erzielt, dass man die Stärke der Dichtung des Nadelventils (V) ändert. Hierbei soll der Schwimmer (G) 40 mm vom Vergaserdeckel entfernt stehen (Lehre Weber 88839.00.0325). Die richtige Stellung wird durch Biegen der Arme (L) erreicht.

Nach erfolgter Einstellung, muss der Schwimmerhub 10 mm betragen; nötigenfalls ist die Stellung des Anschlags (A) zu ändern.

WICHTIG - Die Überprüfung des Schwimmerniveaus muss immer durchgeführt werden, wenn der Schwimmer oder das Nadelventil ausgewechselt wurde. Im zweiten Fall ist es ratsam, auch die dazugehörige Dichtung auszutauschen und besonders auf den einwandfreien Sitz des Ventils zu achten.

Soc. p. Az. EDOARDO WEBER - Fabbrica Italiana Carburatori

Rechtsitz in Mailand - Werk: 40134 BOLOGNA - Via Timavo, 33 - Ruf. 41.79.95 (Italien) - TELEX 51119 WEBER BO



Numero di ordinazione WEBER
19030.012

Nelle ordinazioni indicare:
numero di matricola del particolare
richiesto e il numero e tipo di carburatore

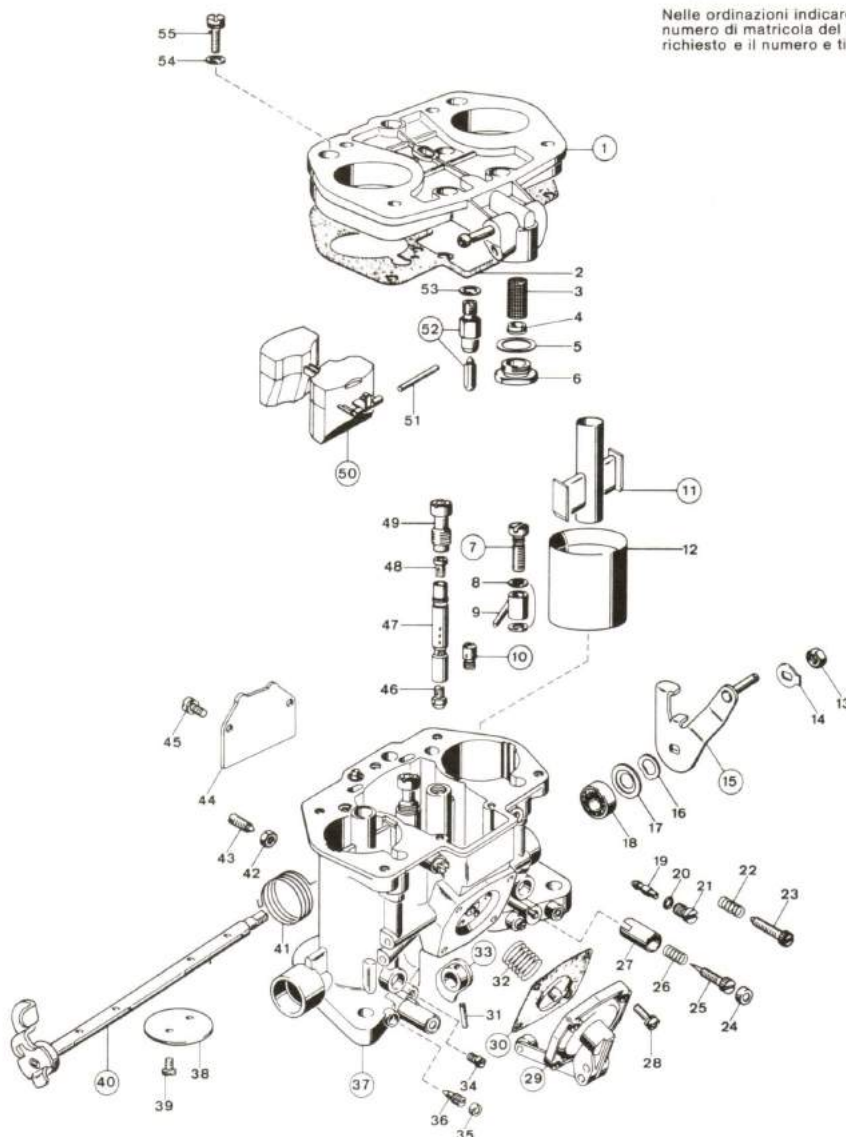


Fig.	Q.tà	Denominazione	Matricola	Fig.	Q.tà	Denominazione	Matricola
1	1	Coperchio carburatore	31716.378	22	1	Molla per vite registro farfalla	47600.007
2	1	Guarnizione per coperchio carburatore	41705.053	23	1	Vite registro farfalla	64585.005
3	1	Elemento filtrante	37020.002	24	2	Tappo minimo inviolabile	61075.022
4	1	Tappo per elemento filtrante	61060.001	25	2	Vite registro minimo	64750.003
5	1	Guarnizione per tappo filtro	41530.024	26	2	Molla per vite registro minimo	47600.007
6	1	Tappo ispezione filtro	61002.010	27	2	Boccola per vite registro minimo inviolabile	12785.055
7	2	Valvola mandata pompa	64290.016	28	4	Vite fissaggio coperchio pompa	64700.004
8	4	Guarnizione per getto pompa	41530.012	29	1	Coperchio pompa	32486.027
9	2	Getto pompa	76210.050*	30	1	Membrana pompa	47407.027
10	1	Valvola aspirazione pompa	79701.000*	31	1	Spina elastica	58445.001
11	2	Centratore di miscela	71124.450*	32	1	Molla ritorno membrana pompa	47600.028
12	2	Diffusore	71513.400*	33	1	Camma comando pompa	14852.007
13	1	Dado per alberino principale	34710.003	34	2	Tappo per fori presa depressione	61015.005
14	1	Rosetta di sicurezza	55520.004	35	2	Tappo inviolabile per vite registro aria	61075.014
15	1	Leva comando farfalle	45041.201	36	2	Vite registro aria	64595.014
16	1	Rosetta ondulata	55530.005	37	1	Corpo carburatore	non a ricambio
17	1	Scodellino premi cuscinetto	58000.015	38	2	Valvola a farfalla	64005.091
18	1	Cuscinetto	32650.001	39	4	Vite fissaggio farfalle	64520.027
19	2	Getto minimo	74405.055*	40	1	Alberino principale	10020.229
20	2	Guarnizione per portagetto minimo	41565.002	41	1	Molla ritorno alberino	47610.035
21	2	Portagetto minimo	52570.006	42	2	Dado per vite fissaggio diffusori	34715.015

Fig.	Q.tà	Denominazione	Matricola	Fig.	Q.tà	Denominazione	Matricola
43	2	Vite fissaggio diffusori	64830.002	50	1	Galleggiante	41030.025
44	1	Piastrina	52135.008	51	1	Perno fulcro galleggiante	52000.001
45	2	Vite fissaggio piastrina	64700.013	52	1	Valvola a spillo	79511.200*
46	2	Getto principale	73401.145*	53	1	Guarnizione per valvola a spillo	83102.070
47	2	Tubetto emulsionatore	61450.054*	54	5	Rosetta per vite fissaggio coperchio carb.	55510.034
48	2	Getto aria di freno	77401.190*	55	5	Vite fissaggio coperchio carburatore	64700.005
49	2	Porta tubetto emulsionatore	52580.001				

(*) Particolari tarati di regolazione

48 IDF 3 / 150

Assortimento revisione completa 92.2555.05

Fig.	Q.tà per confez.	Denominazione	Fig.	Q.tà per confez.	Denominazione
3	1	Elemento filtrante	36	2	Vite registro aria
4	1	Tappo per elemento filtrante	38	2	Valvola a farfalla
6	1	Tappo ispezione filtro	39	4	Vite fissaggio farfalle
7	1	Valvola mandata pompa	41	1	Molla ritorno alberino
9	2	Getto pompa \varnothing 0.50	43	2	Vite fissaggio diffusori
14	1	Rosetta di sicurezza	46	2	Getto principale \varnothing 1.45
19	2	Getto minimo \varnothing 0.55	47	1	Tubetto emulsionatore
21	1	Portagetto del minimo	48	2	Getto aria di freno \varnothing 1.90
23	1	Vite registro farfalla	50	1	Galleggiante
25	2	Vite registro minimo	51	1	Perno fulcro galleggiante
28	2	Vite fissaggio coperchio pompa	52	1	Valvola a spillo \varnothing 2.00
30	1	Membrana pompa	55	2	Vite fissaggio coperchio carburatore
32	1	Molla ritorno membrana pompa	—	1	Assortimento guarnizioni
34	2	Tappo per fori presa depressione			

Assortimento revisione normale 92.1326.05

Fig.	Q.tà per confez.	Denominazione	Fig.	Q.tà per confez.	Denominazione
3	1	Elemento filtrante	51	1	Perno fulcro galleggiante
4	1	Tappo per elemento filtrante	52	1	Valvola a spillo \varnothing 2.00
6	1	Tappo ispezione filtro	55	2	Vite fissaggio coperchio carburatore
50	1	Galleggiante	—	1	Assortimento guarnizioni

Assortimento guarnizioni 92.0184.05

Fig.	Q.tà per confez.	Denominazione	Fig.	Q.tà per confez.	Denominazione
2	1	Guarnizione per coperchio carburatore	20	2	Guarnizione per portagetto minimo
5	1	Guarnizione per tappo filtro	53	1	Guarnizione per valvola a spillo
8	2	Guarnizione per getto pompa			