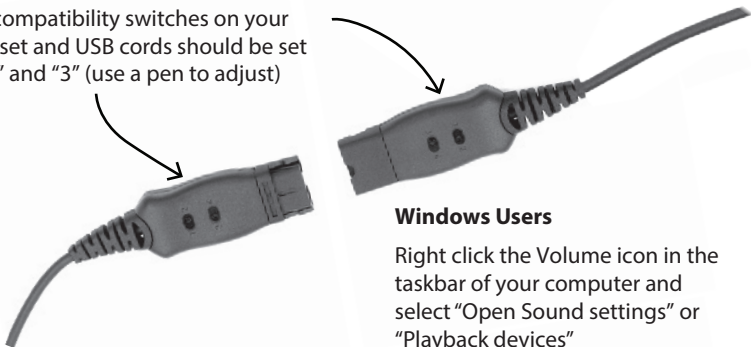




WHEN THE CALL COUNTS

## Leitner LH250/255 USB Headset Quick Start Guide

- 1) Connect your Leitner Headset to the Quick Disconnect Cord
- 2) Plug the USB end into an available port on your computer
- 3) The compatibility switches on your headset and USB cords should be set to "2" and "3" (use a pen to adjust)



### Windows Users

Right click the Volume icon in the taskbar of your computer and select "Open Sound settings" or "Playback devices"

Select "USB Headset" as your Input & Output Devices

*Want more help? Call 1-800-432-3738 Mon-Fri 9am-7pm Eastern Time for free support!*