

E478739

Technical Data:

120V ac, 60Hz, Lamp: E26, 1*Max.40W, class I, IP20

SAFETY INSTRUCTIONS:

- This fitting must be permanently wired into the electric system.
- Always shut off power to the circuit before starting installation work.
- Before inserting and replacing bulb(s) make sure that the power is switched off and the bulb(s) have cooled down.
- Take careful account of all available technical information, and parts details, and install only as indicated in the installation and mounting instructions.
- Do not modify or alter any product before or after installation.
- This may render the product un-safe.
- This product must be installed in accordance with all local and national regulations. If in doubt consult a licensed electrician.
- Clean with a clean, dry cloth or brush, do not use solvents or abrasives.
- Avoid dampness on all electrical components.

POSITION

- Do not mount the fitting in a damp location.
- Be aware of any sunken pipes or wiring before choosing your ceiling location.
- Ensure there is a sufficient power supply.
- Ensure sufficient access to the fitting to enable safe maintenance.

Only suitable for indoor use.

Please keep all the relevant information for future reference!



INSTALLATION & MOUNTING INSTRUCTIONS



Antique Lace Chandelier

Parts

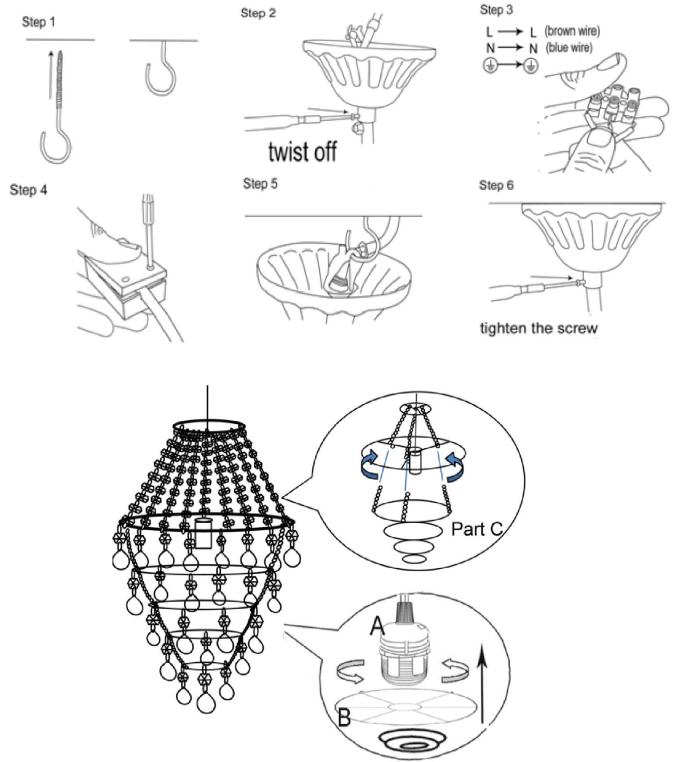


Cable Assembly 1x



Chandelier Frame 1x

*Professional Installation Instructions



*Item should be used as swag lamp or installed only by licensed electrician