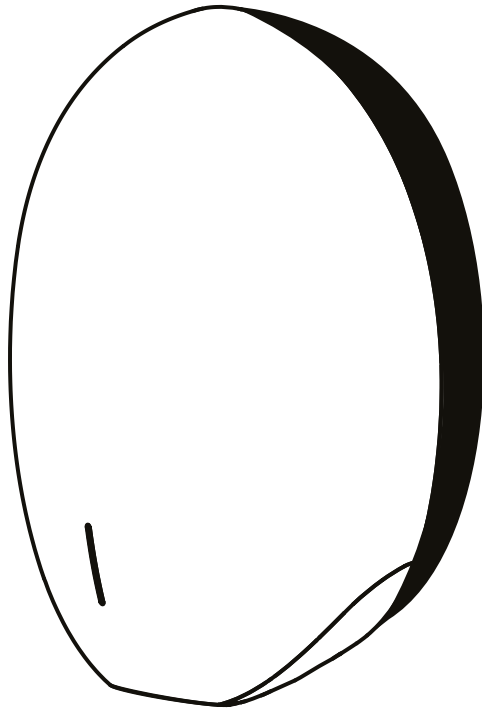
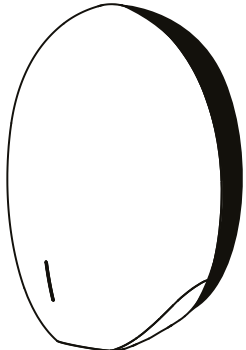




# User Manual



## TECHNICAL SPECIFICATIONS

	Item Category	Performance Data	
		Operating Voltage	AC 220-240V, 50 Hz / AC 110-120V, 60Hz
	Power Standard Mode	220-240V	320W (heat off)/ 720W (heat on)
		110-120V	320W (heat off)/ 820W (heat on)
	Power Quiet Mode 'on'	220-240V	130W (heat off)/ 530W (heat on)
		110-120V	130W (heat off)/ 630W (heat on)
	Sterilisation Mode (applicable for Pebble+ only)	Power	12W
		Operating Cycle	1 hour on, 1 hour off
		Air Speed	17 m/s
	Standby Power	≤ 0.5W	
	Air Speed	96 m/s	
	Motor Type	Brushed DC Motor, 30,000 RPM	
	Sensor Type	Auto Infrared touch free operation	
	Sensor Range	45° 15-25cm	
	Timing Protection	50 seconds auto shut off	
	Drying Time	10 ~ 12 sec	
	IP Rating	IPX3	
	Isolation	CLASS I	
	Unit Size	H 322.1mm x W 270.5mm x D 144.6mm	

## IMPORTANT SAFETY INSTRUCTIONS



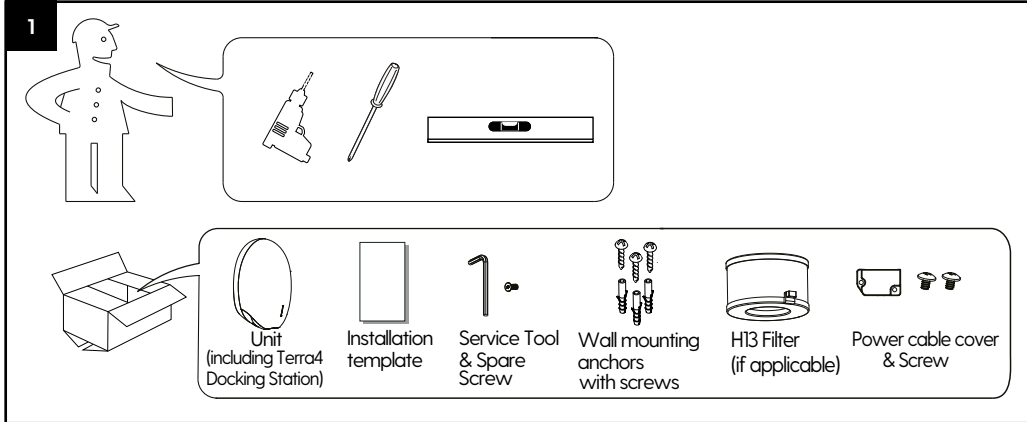
### WARNING – TO REDUCE THE RISK OF FIRE, ELECTRIC SHOCK, OR INJURY TO PERSONS OBSERVE THE FOLLOWING:

- Use this unit only in the manner intended by the manufacturer. The manufacturer is not responsible for any damages caused by misuse or defective installation.
- The instructions contained within the installation template must be followed carefully when installing this unit. Failure to accurately follow the instructions may result in the incorrect operation of this unit, damage to property and/or personal injury.
- Installation work and electrical wiring must be done by qualified person(s) in accordance with all applicable codes and standards, including fire-rated construction.
- When cutting or drilling into wall or ceiling, do not damage electrical wiring and other hidden utilities.
- This unit must be powered by a dedicated circuit branch protected by a circuit breaker with the appropriate rating. The correct circuit cable must be used to meet the current consumption for this unit.
- This unit has been designed for indoor use only. Protect from water, sun and extreme temperatures. Do not install outdoors or close to moisture and/or heat generators.
- This unit cannot be modified. Qualified person(s) must be used for maintenance, any repair work or unit removal. If the unit stops or works incorrectly, contact your regional dealer or contractor.
- This appliance can be used by children aged from 8 years and above and persons with reduced physical, sensory or mental capabilities or lack of experience and knowledge if they have been given supervision or instruction concerning use of the appliance in a safe way and understand the hazards involved. Do not allow children to play with the appliance or carry out cleaning and/or user maintenance on this hand dryer.
- If the supply cord is damaged, it must be replaced by the manufacturer, its service agent or similarly qualified persons in order to avoid a hazard.

## UNPACKING

1. Remove all packing material. Recycling is recommended.
2. Carefully remove the hand dryer from the shipping carton, using care not to drop the appliance.
3. Inspect carefully for any damage that may have occurred during transit. Check for any loose, missing or damaged parts. If the hand dryer is damaged, promptly inform the shipper or dealer where you purchased it.

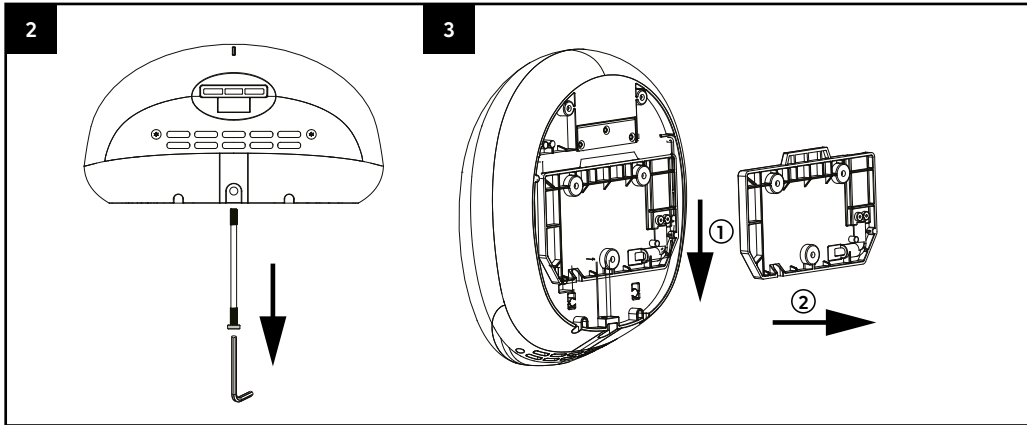
Standard items with the hand dryer are shown in Fig.1 together with tools needed by the installer.



## INSTALLATION

### 1. Terra4 Docking Station® removal.

- 1.1 Place the appliance on a cloth to avoid marking its surface.
- 1.2 Remove the one security screw seated on the bottom surface of the unit, using the service tool (fig. 2).
- 1.3 Pull the Terra4 Docking Station® and remove from the unit (fig. 3).



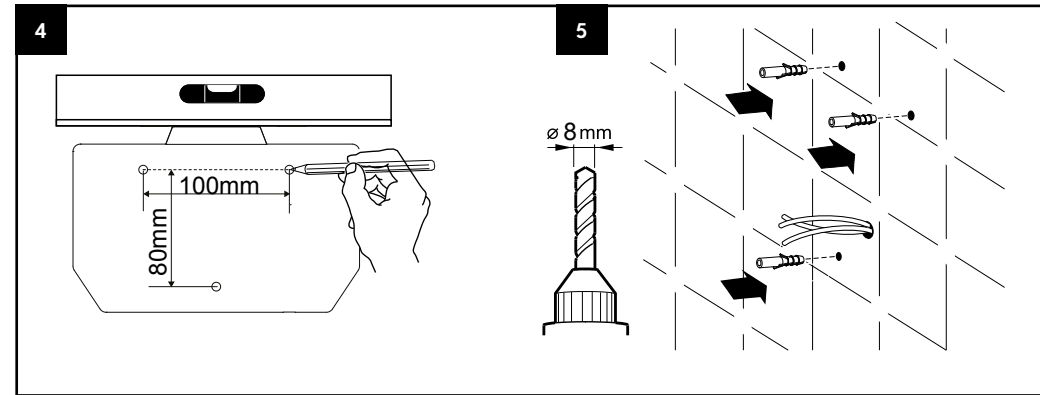
### CAUTION

- Make sure power supply breaker is switched off.
- Check that the electrical supply corresponds to that shown on the rating plate. If the unit is connected to any electrical supply other than stated on the rating plate of the unit, permanent damage or unsafe operation of the unit may result.
- The unit must be mounted on a flat vertical wall capable of supporting the full weight of the unit.

## 2. Positioning

- 2.1 Mark the location on the wall with a pencil. Use the Installation Template to mark the locations for the three fixing points (fig. 4).
- 2.2 Pre-drill the wall in the marked locations using 5/16" (8mm) drill, insert the plastic anchors and tap flush to the wall. If the cable entry is to be done from the wall provide a proper cable exit (fig. 5).

When installing above any surface, the distance from the bottom of the dryer must be a minimum of 700mm.

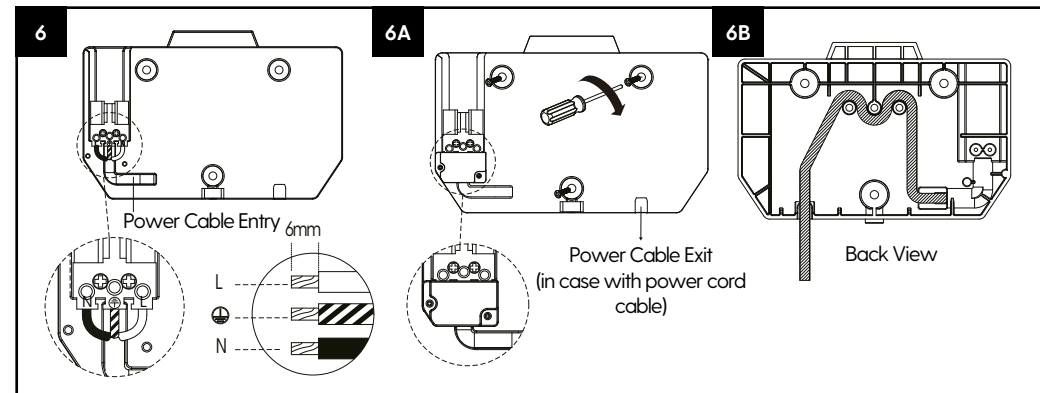


## 3. Installing Power cable and Connection terminal block


### WARNING ENSURE POWER IS NOT CONNECTED

- 3.1 Pull the cable through the hole in the Terra4 Docking Station®. Ensure the cable is long enough to route correctly through the Terra4 Docking Station® to the terminal block (fig. 6).
- 3.2 The cable must sit in the dedicated TerraSafe channel (fig. 6B).
- 3.3 As shown, connect cable to terminal block.
- 3.4 Screw in terminal block.
- 3.5 Fix the Terra4 Docking Station® to the wall. Screw to the wall using the appropriate fitting (fig. 6A).
- 3.6 Fix the cable cover with the screw to the Terra4 Docking Station®.

**CAUTION:** Connect the ground wire to the terminal block marked "⊕". The earth/ground cable must be fitted in all installations. Do not over-tighten and crush the power cable.

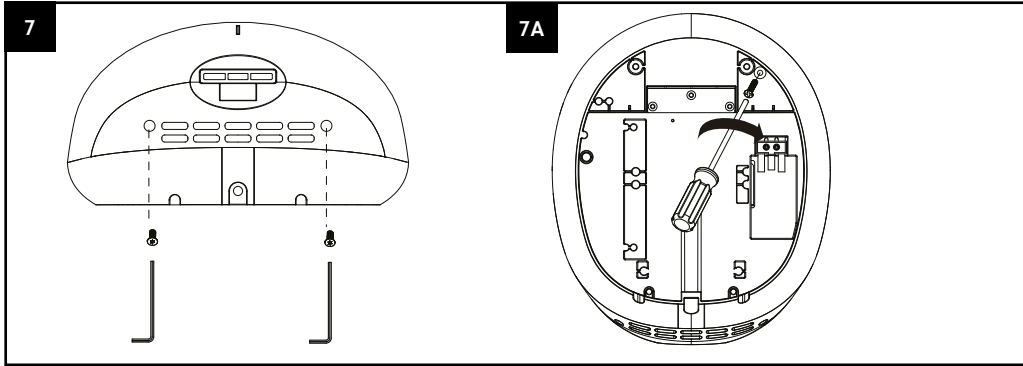


## FILTER, HEATER SWITCH, QUIET MODE (Q) AND AIR STERILISATION MODE (S)

 The unit may have a built in UV-C lamp\*. Avoid exposure to direct germicidal UV rays.  
\*Applicable to Pebble+ model only, which is equipped with air steriliser option.

### 4. Removing the front cover.

4.1 Unscrew the two security screws from the bottom of the unit using the service tool provided (fig. 7), ensuring that the screws remain within the channel. Please note these screws are designed to remain captive within the channel.



4.2 Unfasten the screw illustrated (fig. 7A) from the back of the unit, using an allen screwdriver.

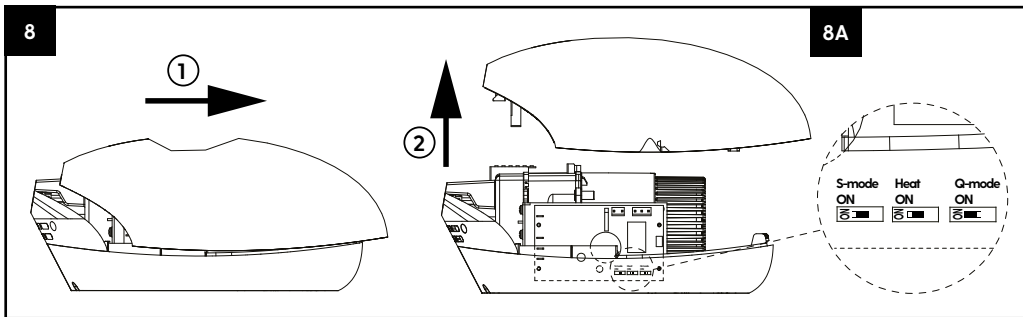
5. To turn on/off the heater use the middle switch shown in fig. 8A (Factory setting: ON).

6. To change Quiet Mode (Q), use the right hand switch shown in fig. 8A (factory setting: OFF).

7. To turn on/off the air sterilisation mode (S) use the left hand switch shown in fig. 8A.

(factory setting: ON) - **only applicable for Pebble+ model.**

8. To insert the filter follow steps 11.4, 11.6 and 11.7 on page 7 (if applicable).



### 9. Re-attaching the front cover.

9.1 Reposition the front cover on the unit.

9.2 Re-fix the 2 cover security screws into the bottom of the front cover (fig. 7).

9.3 Re-fix the cover security screw situated in the back of the unit (fig. 7A).

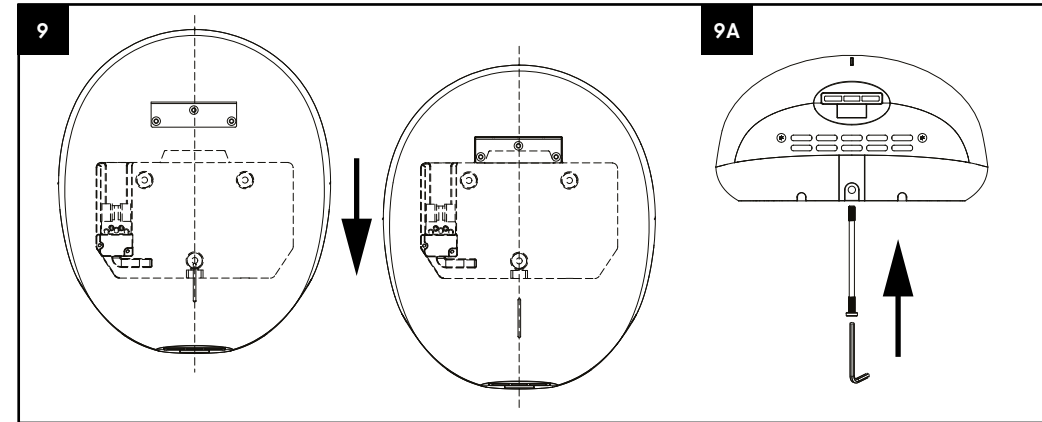
## FIXING THE UNIT TO THE TERRA4 DOCKING STATION®

10. Fix the main unit to the Terra4 Docking Station®.

10.1 Position the unit centrally above the Terra4 Docking Station® so the metal bracket on the rear is positioned over the mating part of the Terra4 Docking Station®. Keeping the dryer firmly against the wall, slowly slide the dryer down until there is no further travel. The dryer should then be electrically connected. (fig. 9).

10.2 Insert and tighten the security screw seated on the bottom surface (fig. 9A). Test the unit for correct operation. The LED light on the cover should flash 3 times with a red light after the power supply has been correctly connected and followed by continuous light white LED.

**Note: If the LED light remains off, the unit must be refitted correctly.**



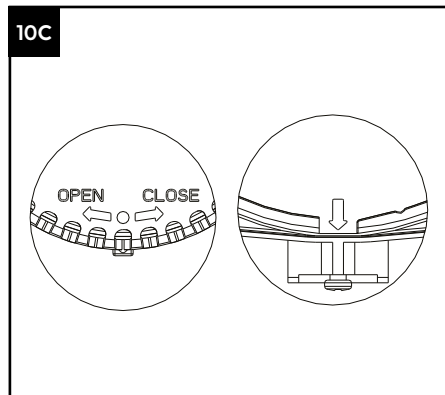
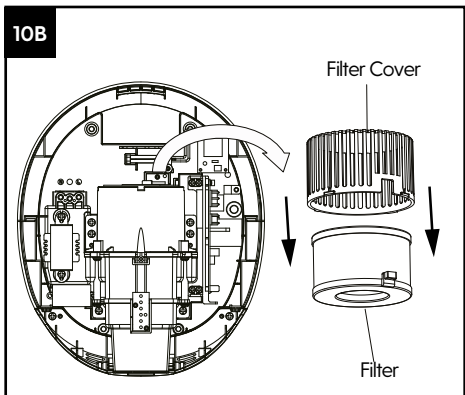
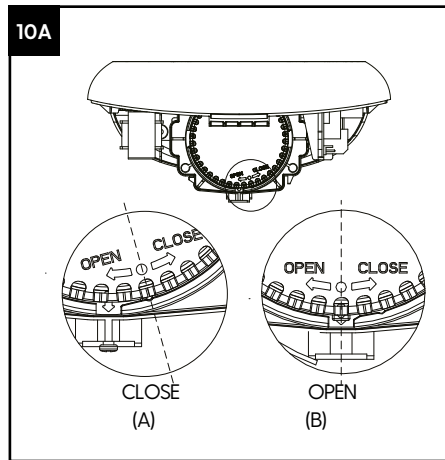
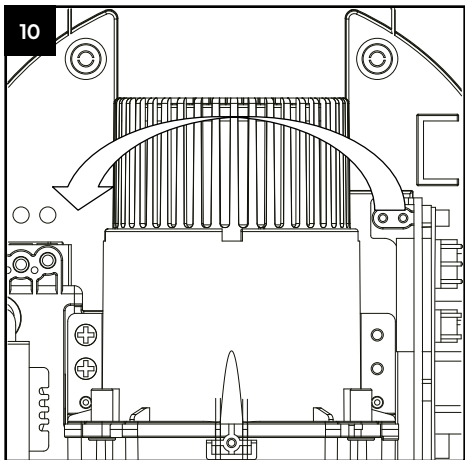
## FILTER REPLACEMENT

**! WARNING** - If the dryer has been fitted with a filter, it will need to be replaced after 60,000 operations but will continue working for a further 15,000 operations but without the benefits of the H13 filter. At approximately 75,000 operations the red LED will be flashing on the window positioned at the front of the cover and the unit will stop working until a replacement filter is fitted.

If the LED light on the front of the unit flashes red then the filter, if fitted, needs to be changed. The filter functions for approximately 60,000 operations.

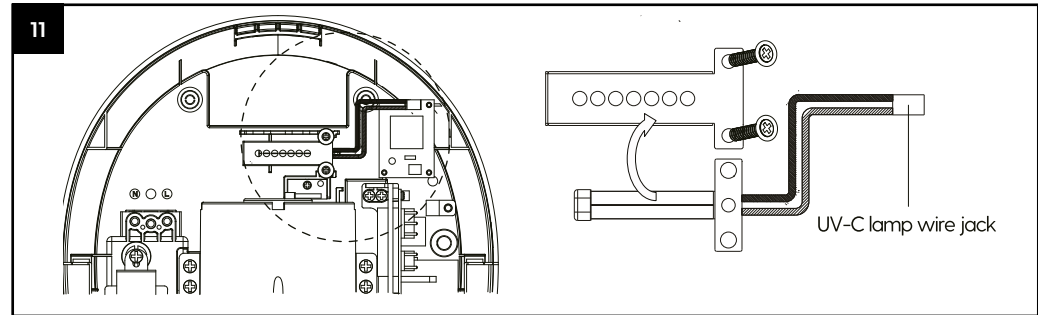
### 11. Changing the filter.

- 11.1 Remove the (2) security screws from the unit, using the service tool (fig. 7).
- 11.2 Remove the (1) screw from back of unit, using the + screw driver (fig. 7A).
- 11.3 Lift the front cover off the unit (fig. 8).
- 11.4 Turn the filter cover to open direction (fig. 10). Ensure the dot is aligned with the arrow present on the motor cover (fig. 10C).



- 11.5 Remove the filter (fig. 10B)
- 11.6 Insert the new filter.
- 11.7 Turn the filter cover to close direction, ensuring the dot is positioned to the right of the arrow on the motor cover (fig. 10A).

## UV-C LAMP REPLACEMENT (PEBBLE+ ONLY)



The sterilisation function of the UV-C lamp will be weakened after 3 years of use and needs to be replaced to maintain proper function (applicable to Pebble+ only).

### 12. UV-C lamp replacement.

- 12.1 Remove the filter cover and filter shown on page 7.
- 12.2 Unfasten the two screws on the UV-C lamp cover and remove. Pull out the UV-C lamp wire jack from the UV-C lamp board (fig. 11).
- 12.3 Insert the new UV-C lamp and replace the cover. Tighten the two screws and replace the wire jack on the UV-C lamp board.
- 12.4 Replace the filter (shown on page 7), then re-attach front cover (shown on page 5).

**Note:** On power up should the red LED continue to flash this means the filter is not fitted correctly and needs to be refitted.

## OPERATING LED LIGHT

### LED lighting

Front cover colour	Standby mode	Working mode	Sterilisation Mode
White/Satin	White LED on	White LED fast mode	White LED slow mode
Black	Red LED on	Red LED fast mode	Red LED slow mode

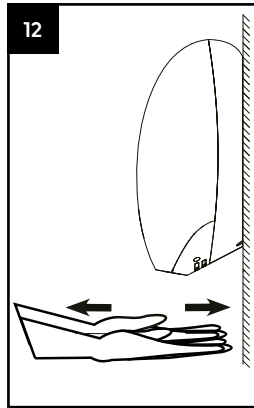
### Filter Alert Lighting

Filter uses	Light	Standby/ Sterilisation Mode	Working Mode (Sensing mode)
From 60,000 uses ~ 74,999 uses	White LED	White LED on/slow mode	White LED on fast mode
	Red LED	Red LED flashing	Off
	Location LED (blue)	Off	On
From 75,000 uses ~ until replace new filter	White LED	White LED on/slow mode	White LED on slow mode
	Red LED	Red LED flashing	Red LED flashing
	Location LED (blue)	Off	Flashing


## USE

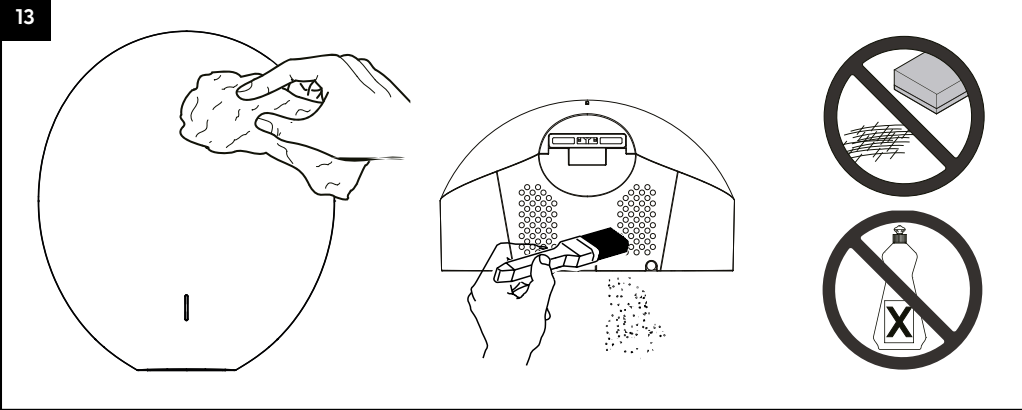
1. No touch operation.
2. Shake excess water from hands.
3. Place hands under the outlet to start operation (fig. 12)
4. Slowly move hands back and forth under the outlet at the bottom of the dryer.
5. A blue LED light situated at the bottom of the dryer appears with the dryer operation. This assists the user in keeping the hands in the dryers sensing range.
6. The dryer stops when hands are removed.
7. The dryer will auto shut off after 50 seconds of uninterrupted use. If there is an electrical or motor problem, the blue LED will flash when hands are away from the dryer outlet.

The sterilisation function is designed to run for one hour ON and one hour OFF between hand drying cycles (Pebble+ only).



## MAINTENANCE AND CLEANING

 **Remove the security screw (fig. 9A) to lift the unit off the Terra4 Docking Station® before maintenance or repair.**



### Regular maintenance.

Regularly clean the outer casing using a soft, damp cloth to gently wipe away any dirt.

 **CAUTION Never use abrasives or chemicals to clean the cover. Do not soak.**

### Periodical deep clean.

1. Cleaning maintenance must not be taken until the unit has been removed from the Terra4 Docking Station® and power is not connected.
2. Use the service tool to remove the security screws from the cover.
3. Remove the cover.
4. Clean all dust and lint from the interior of the hand dryer.
5. Replace the cover and fix security screws.
6. Wipe the cover with a damp cloth.

## WARRANTY

**FIVE YEAR WARRANTY.** We warrant the model covered in this manual to the original user against any defects in workmanship or materials under normal use for a period of five (5) years from the date of purchase. However, this warranty excludes damages resulting from normal wear and tear, motor burnout, incorrect use, incorrect installation, and any consumable parts (such as H13 filters etc).

If any part of the product is found to be defective in material or workmanship and returned to an authorised party, we will repair or replace the defective part. Please note that in the first instance, you should contact your retailer or supplier for details on how to claim a warranty repair or replacement.

Please be advised that our warranty does not cover damages resulting from misuse, abuse, or any modifications made to the product. Additionally, any repairs or replacements made outside of our authorised service centres will void the warranty.

By purchasing and using our product, you acknowledge and accept the terms of this warranty. We reserve the right to determine the validity of any warranty claims and to amend or revoke this warranty at any time without prior notice.

**PRODUCT SUITABILITY.** We understand that various jurisdictions have their own codes and regulations that govern the sales, construction, installation, and/or use of products for specific purposes. While we strive to ensure that our products comply with these codes and regulations, we cannot guarantee compliance nor be held responsible for the installation or use of our products.

We strongly advise that you review the product application and all applicable national and local codes and regulations before purchasing and using our products. It is your responsibility to ensure that the product, installation, and use are in compliance with these codes and regulations.

By purchasing and using our products, you acknowledge and accept the responsibility for complying with all applicable codes and regulations. Our warranty does not cover any damages or liabilities resulting from non-compliance with these codes and regulations.

