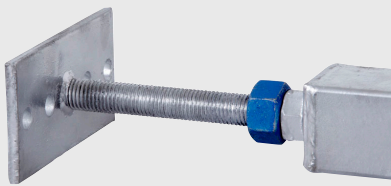


Adjustable thread and locking nut for millimetre adjustments.

Telescopic posts 75x75x4mm into 65x65x4mm

3 high tensile bolts for 100mm adjustment

Interchangeable heads using 2 high tensile M16 bolts



SMART TELPOST™

TAKE THE STRESS OUT OF GETTING STEEL POSTS JUST RIGHT

Do you need a post to support an LVL or a steel beam but not sure of the height?

Trying to support a roof load with a post and your concrete levels are not quite right?

SMART TELPOST™ BY STEEL BUILDERS IS THE ANSWER!

Smart Telpost™ is designed to take the stress out of getting steel posts at just the right height. Smart Telpost™ can be used to support either steel beams or timber beams in a huge range of applications.

Perfect for supporting LVLs over alfresco and balcony areas prior to brick piers being laid, avoid the hassle of temporary propping and Work Health and Safety issues.

Smart Telpost™ comes in a range of sizes as shown in Table T1, over leaf. All types are an off the shelf hot dip galvanised product and can be used with any of our proprietary heads.

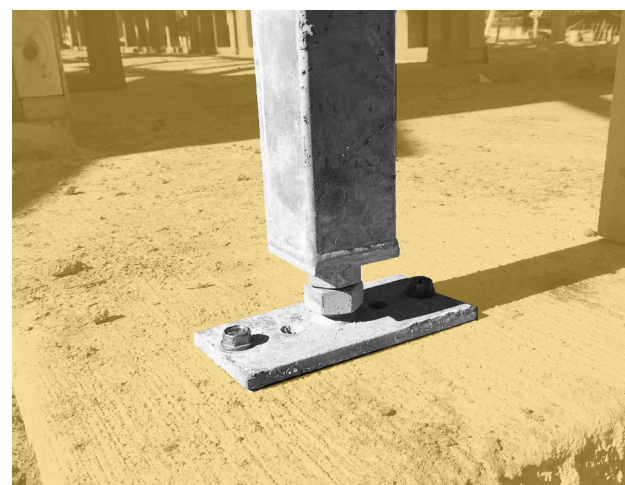
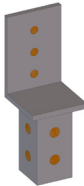
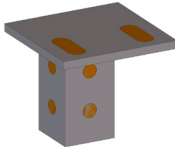
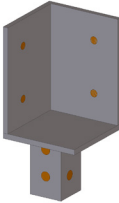
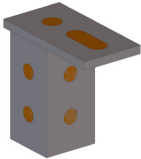
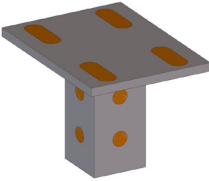
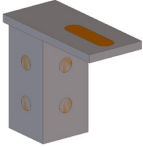
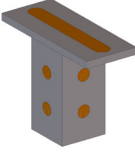



TABLE T1

| TELPOST TYPE | ADJUSTMENT RANGE | FINISH | HEADS AVAILABLE |
|--------------|------------------|--------|-----------------|
| A | 1900mm-3300mm | HDG | All AP Heads |
| B | 2700mm-4100mm | HDG | All AP Heads |
| C | 3900mm-5300mm | HDG | All AP Heads |

Smart Telpost™ uses 2 adjustments so you can get the height just right. At the bottom of the Smart Telpost™ is a high tensile M30 threaded rod and locking nut for minor adjustments of 1mm. In the middle of the Smart Telpost™ there are three M16 structural bolts for larger adjustments of 100mm at a time. **The specialised bolts used in the Smart Telpost™ have specifically designed heads so they will fit within the confines of a standard 90mm timber frame.** The Smart Telpost™ base plate comes with 15mm holes to suit a huge range of M12 anchors. Below is a list of bolt on heads for the Smart Telpost™, they all come in a hot dip galvanised finish and are interchangeable as required for your fixing situation.

For full engineering load tables and detailed drawings of connection plates please contact Steel Builders.

| TYPE | USES | IMAGE | TYPE | USES | IMAGE |
|------------|---|---|------------|--|--|
| AT1 | AT1 is used for connection to an LVL or timber beam. Suits tek or coach screws. |  | AT5 | AT5 is used for supporting one end of a universal beam or column. Suits M16 bolts. |  |
| AT2 | AT2 is used where two LVLs or timber beams join on a mitred corner. Suits tek screws or coach screws. |  | AT6 | AT6 is used for supporting one end of a PFC. Suits M16 bolts. AT6 is shorter than AT7 to avoid conflict with cornice. |  |
| AT3 | AT3 is used where 2 universal steel beams or columns connect over the post. Suits M16 bolts. |  | AT7 | AT7 is used for supporting one end of a PFC. Suits M16 bolts. AT7 is longer than AT6 so cannot be used where it may interfere with cornice. |  |
| AT4 | AT4 is used where 2 PFC's connect over the post. Suits M16 bolts. |  | AT8 | AT8 is a dual connection for picking up an LVL or PFC. Especially good for alfresco areas where beam allocation may change. Suits M16 bolts, tek screws or coach screws. |  |
| | | | AT9 | | AT9 is used to where 2 LVL's connect in a straight line. Suits tek screws or coach screws. |

Timber Connection
 Steel Connection

FOR MORE INFORMATION PLEASE CONTACT OUR OFFICE OR VISIT OUR WEBSITE

Steel Builders Pty Ltd
 18-20 Charles Street, St Marys
 NSW 2760
 ABN: 53 147 275 456

Ph: 02 9623 7363
 Fax: 02 8415 7123
 E-mail: sales@steelbuilders.com.au

WWW.STEELBUILDERS.COM.AU