

SMART COMPI-BAR™

THE COST-EFFECTIVE LINTEL SOLUTION

NEED A GALVANISED GARAGE BEAM AT THE SAME COST AS A PRIMED BEAM, SMART COMPI-BAR™ IS YOUR SOLUTION!

All residential builders experience the same day to day issues with compliance to the myriad of regulations, legislation and standards they are required to meet.

Steel Builders is an innovator in structural steel design for residential building and we are always looking for more efficient and more cost effective ways of meeting these standards.

The Smart Compi-Bar™ is another innovation from Steel Builders that can be used as an alternative to the traditional PFC and plate lintel.

WHAT IS A SMART COMPI-BAR™?

The Smart Compi-Bar™ is a fabricated tbar that is 200x10mm on the horizontal and 100x10mm on the vertical.

The vertical leg is drilled to accommodate M24 bolts to affix it to the PFC.

Smart Compi-Bar™ is fixed to a normal PFC, either primed or galvanised using 8.8s high tensile M24 bolts.

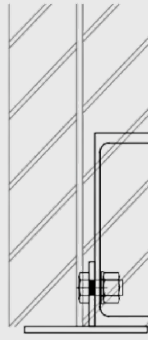
Smart Compi-Bar™ is fully engineered and can be used as a direct substitution for already specified PFC and plate.



› GARAGE DOOR BEAM

Development - Section

230 DOUBLE BRICK



THE STANDARDS

AS/NZS 2699.3:2002, Built-in components for masonry construction defines a lintel as "A load bearing beam that provides structural support for the masonry and other loads above a window, door or other opening of a building."

It is generally accepted that all window lintels used in the NSW building industry require R3 durability (hot-dip galvanized to comply with AS/NZS 4680, with a minimum coating mass of 600 g/m²). However, a large majority of builders still use primed PFC and plate over their garage door openings. There are several reasons that this has been the case;

1. Long lead times for galvanising
2. Higher cost for galvanising
3. Distortion of the lintel in the galvanising process

Smart Compi-Bar™ has overcome all of these issues by treating the PFC and the plate carrying the mortar as separate components. In this way, the part of the beam coming in contact with mortar meets R3 standards, but you only galvanise what you need. In extreme environments the PFC can also be galvanised, but due to no welding of the PFC, distortion is greatly reduced.

Smart Compi-Bar™ eliminates long lead times as it is an off the shelf product, and due to mass production the cost for galvanising is greatly reduced. The cost for the Smart Compi-Bar™ and a primed PFC is about the same price as a primed PFC and plate for most applications. Distortion is also eliminated on the PFC as no welding on the PFC takes place.

I HAVE OTHER LOADS ON MY GARAGE BEAM, CAN I USE SMART COMPI-BAR™?

Smart Compi-Bar™ is engineered to be a direct substitution for PFC and plate. So if your engineer has specified a 230PFC + 200x10 flat, Smart Compi-Bar™ can be used with a 230PFC.

WHAT LENGTHS DOES IT COME IN?

Smart Compi-Bar™ currently comes in 3000mm, 5400mm and 6000mm lengths but can be cut to size to suit shorter spans. When cut it is recommended that all ends are properly treated with a primer that complies with AS/NZS 3750.9: 2009, Paints for steel structures Part 9: Organic zinc-rich primer, type 1 – single pack primer.

WHAT IS THE FINISH ON SMART COMPI-BAR™?

Compi-Bar is hot dip galvanised to comply with AS/NZS 4680 and R3 of AS/NZS 2699.3:2002.

HOW MUCH DOES SMART COMPI-BAR™ WEIGH?

Compi-Bar weighs 24.14 kg/m, so for a normal 5.3m garage beam it would be 127.92kg plus the weight of the supporting PFC.

WHERE CAN I USE SMART COMPI-BAR™?

In any application where a PFC + plate has been specified by your engineer for 230mm double brick walls.

WHAT ARE THE ADVANTAGES OF THE SMART COMPI-BAR™?

- For the same price as a primed PFC and plate you have a galvanised product meeting the Australian Standard
- Off the shelf product so no galvanising lead times
- No distortion in the galvanised product like traditional galvanised PFC and plate
- Reduces costs
- Can be lifted up in two pieces (PFC and Smart Compi-Bar™ can be bolted together in situ)
- If Smart Compi-Bar™ is damaged on site, it can be easily replaced, no need for on-site cutting and welding.

FOR MORE INFORMATION PLEASE CONTACT OUR OFFICE OR VISIT OUR WEBSITE

Steel Builders Pty Ltd
18-20 Charles Street, St Marys
NSW 2760
ABN: 53 147 275 456

Ph: 02 9623 7363
Fax: 02 8415 7123
E-mail: sales@steelbuilders.com.au

WWW.STEELBUILDERS.COM.AU