

PROJECT NAME	
ORDERING #	TYPE

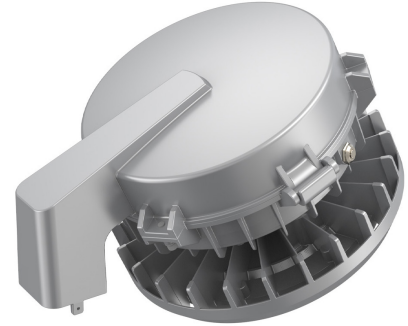
5 YEAR WARRANTY

DETAILS

Meets standards for use in the following harsh or hazardous environments:
 Class I, Division 2, Groups A, B, C, D • Class II, Division 1, Groups E, F, G •
 Class II, Division 2, Groups F, G • Class III • Wet Locations.

SPECIFICATIONS

Input Power	50W normal power / 4W emergency power
Input Voltage	220-240VAC
Light Output	7,000 lumens normal power 720 lumens emergency power
Efficiency	140 lm/W
CCT	5000K
CRI	>70
Beam Angle	Type III
Working Environment	Harsh and hazardous locations, indoor or outdoor
Enclosure Rating	IP66, IK08
Average Lamp Life	50,000 hours
Certifications	IECEX, ATEX
Warranty	5 Years



Hazardous Location Light with Emergency Button

ORDERING

Example: **EXP5HA050WUL50CM-EM**

SKU Root	Wattage / Lumens	Voltage	CCT	Mounting	Battery Backup
EXP5HA	050W - 50W, 7,000 lumens (normal) 4W, 720 lumens (emergency)	UL - 220-240VAC	50 - 5000K	CM - Ceiling Mount PM - Pendant Mount WB - Wall Bracket SM - 25° Stanchion Mount SMV - 90° Stanchion Mount TM - Trunnion Mount	EM - Emergency