

Gas Station LED Canopy Light

DANGER!

Risk of shock. Disconnect power before installation.

WARNING!

- Risk of fire or electric shock. Installation requires knowledge of luminaires electrical systems. If not qualified, do not attempt installation. Contact a qualified electrician.
- Risk of fire or electric shock. Install this product only in luminaires that have the construction features and dimensions shown in the photographs and/or drawings and where the input rating of the product does not exceed the input rating of the luminaire.
- Only those open holes indicated in the photographs and/or drawings may be made or altered as a result of kit installation. Do not leave any other open holes in an enclosure of wiring or electrical components.
- To prevent wiring damage or abrasion, do not expose wiring to edges of sheet metal or other sharp objects. Do not make or alter any open holes in an enclosure of wiring or electrical components during installation.
- Installers should not disconnect existing wires from lampholder terminals to make new connections at lampholder terminals. Instead installers should cut existing lampholder leads away from the lampholder and make new electrical connections to lampholder lead wires by employing applicable connectors.
- Risk of fire or electric shock. Luminaire wiring and electrical parts may be damaged when installing hardware. Check for enclosed wiring and components.
- Risk of fire or electric shock. Check the existing wiring for damage before installing. Do not install if existing wires are damaged.
- This product is accepted as a component of a luminaire where the suitability of the combination shall be determined by authorities having jurisdiction.
- "This luminaire has been modified and can no longer operate the originally intended lamp," shall be marked on the retrofit luminaire where readily visible by the user during normal maintenance, including relamping.
- "This luminaire has been modified to operate LED lamps. Do not attempt to install or operate *lamps in this luminaire" shall be marked on the retrofit luminaire where readily visible by the user during normal maintenance including relamping. "*" shall be replaced by the original illumination type such as "fluorescent," "HID," etc.
- This device complies with Part 15 of the FCC rules. Operation is subject to the following two conditions: (1) This device may not cause harmful interference and (2) this device must accept any interference received, including interference that may cause undesired operation.
- LED Lamp Replacement Marking – Identification of the replacement LED lamp type / Model to be used along with manufacturer and ordering information.

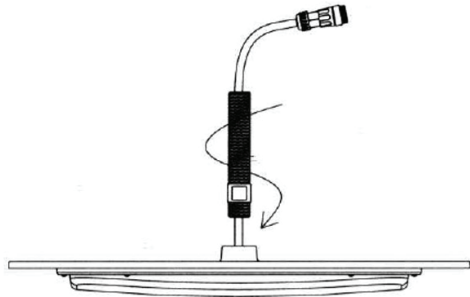
Gas Station LED Canopy Light

Installation Steps

Disconnect All Power

STEP 1

Screw the aluminum pipe into the heatsink.



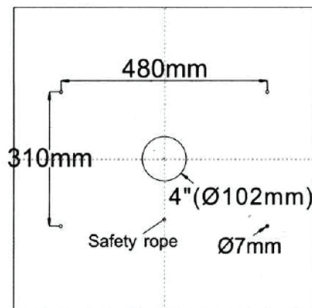
STEP 2

Screw the safety rope to heatsink.



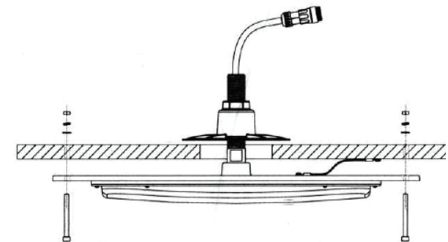
STEP 3

Drill installation holes in ceiling to dimensions shown below.



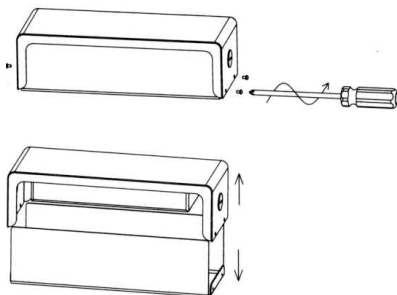
STEP 4

Lock the safety rope to the ceiling, assemble the installation plate to the aluminum pipe, then install the fixture.



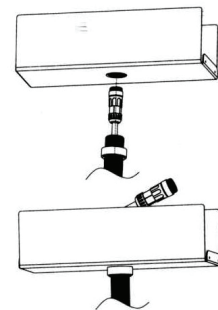
STEP 5

Take the driver box apart with a screwdriver.



STEP 6

Assemble the 3/4 pipe nut to the aluminum pipe (fix the height and direction of driver box), across the DC connector through driver box, then screw the driver box onto the aluminum pipe.



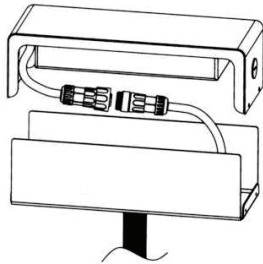
Gas Station LED Canopy Light

Installation Steps

Disconnect All Power

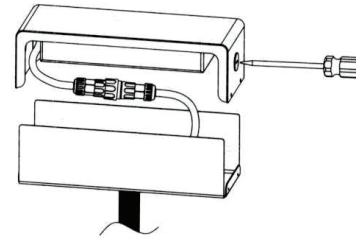
STEP 7

Connect the DC connector of LED fixture with driver's DC connector.



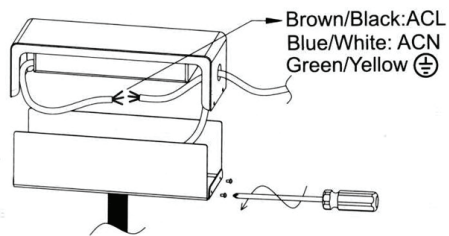
STEP 8

Remove semi-cut circles to create holes in driver box.



STEP 9

Connect Line, Neutral and Ground wires.



STEP 10

Finally, reassemble the driver box.

