

PROJECT NAME	
ORDERING #	TYPE

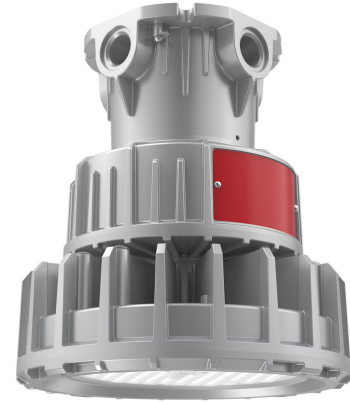
**5** YEAR WARRANTY

### DETAILS

This light is designed for use in chemical, oil, gas, petrochemical, pulp, paper, foundry, manufacturing, waste, sewage treatment, power generation, paint spray, marine, and other harsh applications that meet Zone 1, Zone 2, Zone 21, or Zone 22 criteria.

### SPECIFICATIONS

<b>Input Power</b>	70W, 50W, or 30W
<b>Input Voltage</b>	100-277VAC, 50/60 Hz
<b>Light Output</b>	70W - 9,800 lumens 50W - 7,000 lumens 30W - 4,200 lumens
<b>Efficiency</b>	140 lm/W
<b>CCT</b>	5000K
<b>CRI</b>	>70
<b>Beam Angle</b>	120 degrees
<b>Working Environment</b>	Harsh and hazardous locations, indoor or outdoor
<b>Enclosure Rating</b>	IP66, IK10
<b>Average Lamp Life</b>	50,000 hours
<b>Certifications</b>	IECEX, ATEX
<b>Warranty</b>	5 Years



### ORDERING

Example: **EXP3HA030WUL50CM**

SKU Root	Wattage / Lumens	Voltage	CCT	Mounting Option
<b>EXP3HA</b>	<b>030W</b> - 30W, 4,200 lumens <b>050W</b> - 50W, 7,000 lumens <b>070W</b> - 70W, 9,800 lumens	<b>UL</b> - 100-277VAC	<b>50</b> - 5000K	<b>CM</b> - Ceiling Mount <b>SM</b> - 25° Stanchion Mount <b>WB</b> - Wall Bracket <b>PM</b> - Pendant Mount <b>TM</b> - Trunnion Mount