

Project Name: \_\_\_\_\_

Ordering #: \_\_\_\_\_ Type: \_\_\_\_\_



### OVERVIEW

<b>Size</b>	12", 14", 16"
<b>Wattage (W)</b>	16W, 22W, 26W
<b>Lumen Package (lm)</b>	Up to 2,200 lm
<b>Color Temperature (CCT)</b>	2700K/3000K/3500K/4000K/5000K Selectable
<b>Efficacy (lm/W)</b>	80~85 lm/W



### ORDERING GUIDE

Example: **MMH12DR16WCS**

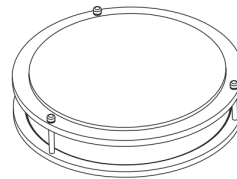
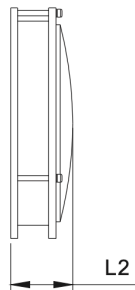
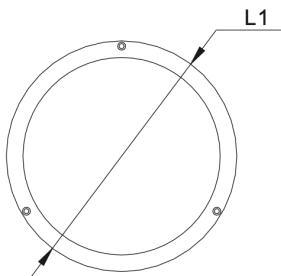
SKU Root	Size (Diameter)	Series	Wattage / Lumens	CCT
MMH	12 - 12"	DR - Double Ring	<b>16W</b> - 16W, 1,450 lumens	CS - 2700K/3000K/3500K/4000K/5000K Selectable
	14 - 14"		<b>22W</b> - 22W, 1,850 lumens	
	16 - 16"		<b>26W</b> - 26W, 2,200 lumens	

### PRODUCT DIMENSIONS

DIMENSIONS	16W (12")	22W (14")	26W (16")
<b>Product Dimension</b>	Φ12" x 2.56" / Φ305mm x 65mm	Φ14" x 2.95" / Φ355mm x 75mm	Φ16" x 3.35" / Φ405mm x 85mm

Front View

Side View



L1	Φ 305mm/Φ 12"	Φ 355mm/Φ 14"	Φ 405mm/Φ 16"
L2	65mm/2.56"	75mm/2.95"	85mm/3.35"

**SPECIFICATIONS**

<b>Size</b>	12", 14", 16"
<b>Wattage &amp; Lumens</b>	(12") 16W, 1,450 lumens (14") 22W, 1,850 lumens (16") 26W, 2,200 lumens
<b>Efficacy</b>	80~85 lm/W
<b>CCT</b>	2700K/3000K/3500K/4000K/5000K Selectable
<b>CRI (Ra)</b>	80
<b>Controls</b>	Compatible with Leviton DSL06, Leviton IPL06, or LUTRON DVCL-153P Dimming Controller CCT Selectable
<b>Input Voltage</b>	120VAC
<b>Average Lifetime</b>	50,000 hours
<b>Beam Angle</b>	110°
<b>Mounting</b>	Flush Mount
<b>Material</b>	Stainless Steel
<b>Fixture Color</b>	Brushed Nickel
<b>IP Rating</b>	IP20
<b>Certifications</b>	ETL, Energy Star
<b>Warranty</b>	5 Years