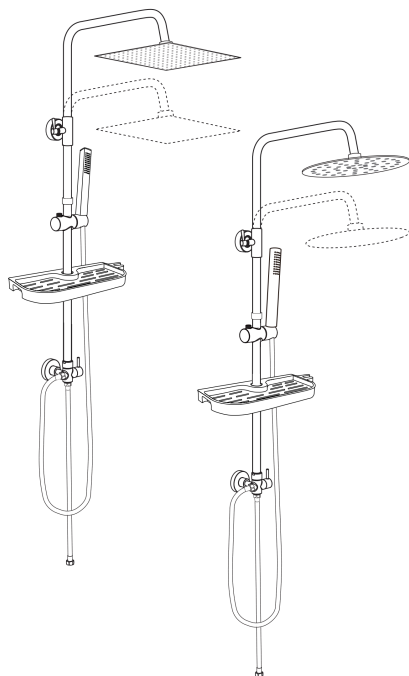


# Installation instructions

Customer service: us@dylingmbh.com  
 Technical problem: support@dylingmbh.com  
 24/7 around the clock



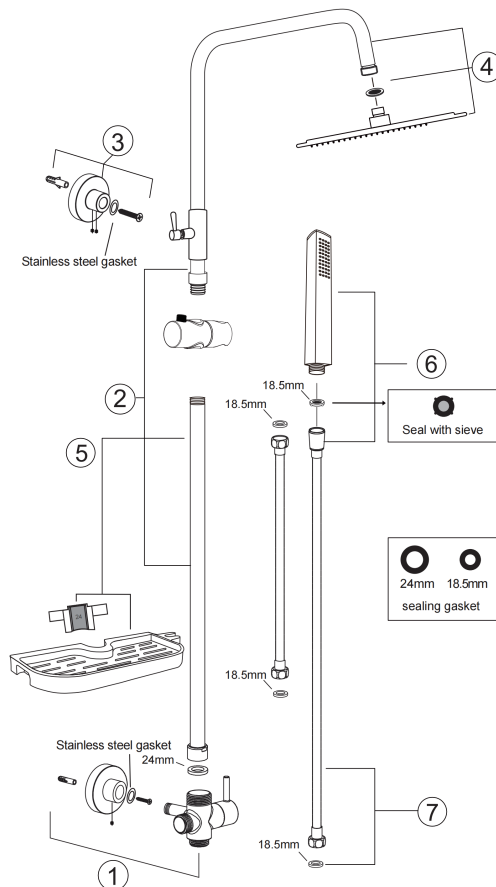
## Instructions for use:

Notice! All pictures shown are for illustrative purposes only.  
 Deviations from the products are possible.  
 The data may change with different installation scenarios.  
 Please install according to the actual situation.

**Manufacturer: Zhangpu Juhe Sanitary co., Ltd.**

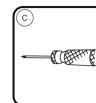
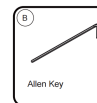
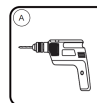
Area A, No.211 Maipu, Maipu Village, Su'an Town, Zhangpu County, Zhangzhou City, Fujian Province, China.

## Parts List

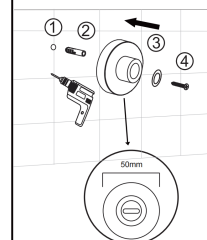


### Attention!

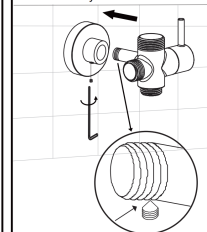
From June 1st, 2021 we will provide the shower sets with extra 2pcs stainless steel gasket.  
 The stainless steel gasket is not necessarily to be used while installing the wall holder.  
 If you can fix the wall holder just by the screw, then the stainless steel gasket is not necessarily to be used.



**1**  
 Install the lower wall holder.



**2**  
 Insert diverter and tighten the screw with Allen Key.



**3**  
 Press the grey button while installing the sliding hand shower holder into the shower column.

### Attention!

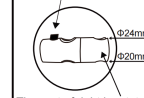
1. While installing and adjusting the height of hand shower holder, please always press the grey button on the sliding hand shower holder until it reaches the desired position, to avoid the damage of spring.

2. The 24mm diameter hole of sliding hand shower holder facing upwards, and 20mm diameter hole facing downwards.

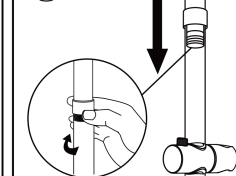
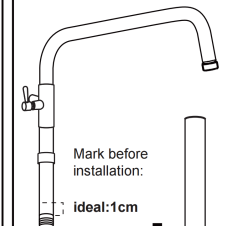


### Attention!

Please make sure the grey button on the sliding hand shower holder must face upward. If it facing down, the hand shower holder will slide down along the shower column.



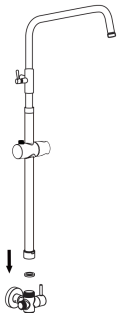
**4**  
 Insert the upper shower bar into the lower shower bar. Ideal depth of insert: 1cm.



### Attention!

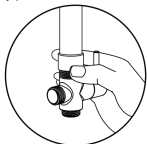
If upper shower bar is difficult to put into the lower shower bar, please lubricate a little oil to the O-ring under the upper shower bar.

**5**



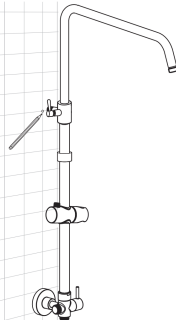
Please tighten the nut at the bottom of sliding bar connect to diverter by hand, or cover the nut with a cloth before you tighten it by pliers or wrench, to avoid the damage of surface.

NOTICED: Please don't tighter the nut by pliers or wrench overexert!



**6**

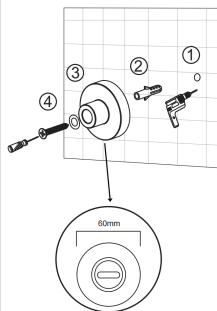
Mark the drilling position for the upper wall holder.



Connect the complete sliding bar with diverter to mark the position for the upper wall holder, then remove the sliding bar from the diverter.

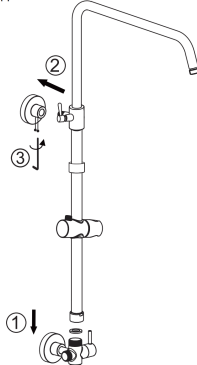
**7**

Drill the hole in the marked position to install the upper wall holder.



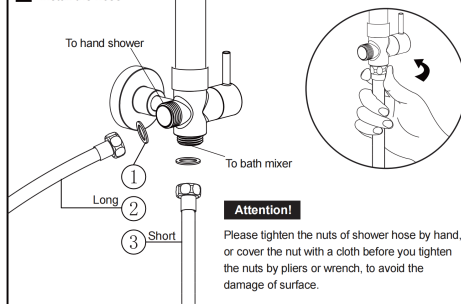
**8**

Install and fix the sliding bar to the upper wall holder and diverter.



**9**

Install the hose

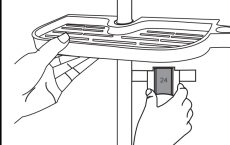


**Attention!**

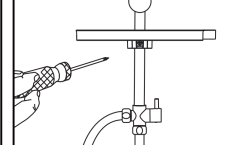
Please tighten the nuts of shower hose by hand, or cover the nut with a cloth before you tighten the nuts by pliers or wrench, to avoid the damage of surface.

**10**

Install the shelf

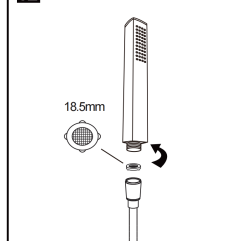


**11**

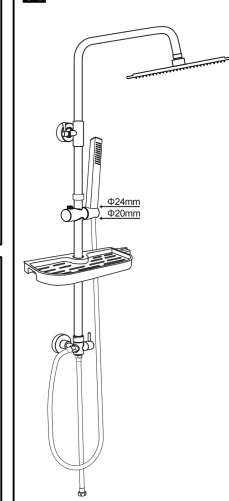


**12**

Install hand shower

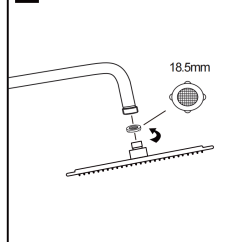


**14**



**13**

Install shower head



**Troubleshooting**

1. Shower head with water dropping: Please always keep the shower head to be horizontally.
2. When turn down the handle of diverter, water comes out from hand shower but turn the handle up, water does not run out from shower head. The shower hose was installed to incorrect connector of diverter, please reinstall the shower hose correctly.
3. Nozzles clogged and water does not come out: Please use a cloth and clear water to wipe the nozzles and remove scale.

**Attention!**

Check all connections leaking or not after installation. The warranty is invalidated by improper installation of the product. Especially the consequential damage caused by improper installation is not guaranteed.

**Warranty conditions**

We guarantee the perfect functioning of our items for two years. In the event of a warranty claim, please contact the trading partner from whom you purchased the item first. If in doubt, they will contact us. Please tell us as precisely as possible what damage / error / defect the item has.

1. The guarantee begins on the date of purchase of the item.
2. Please keep the invoice. The invoice serves as proof of guarantee.
3. The subject of the guarantee is the defect-free function of the item. Defects must be reported immediately after they occur within the stated period of the guarantee. The defective article must be kept and returned to the trading partner within 30 days.

The following cases are excluded:

1. Normal wear and tear.
2. Improper installation.
3. Improper handling.
4. Improper repair.

Please read the instructions completely before installation and follow the instructions. These instructions contain important information on installation, adjustment, maintenance and spare parts.

Keep the instructions in a safe place, and pass them on to subsequent owners. The guarantee is granted by Dylin GmbH, Glinde, 21509, Germany.

**Safety instructions**

1. Please only have the installation carried out by competent persons.
2. Please turn off the general water supply before installation.
3. Make sure that all seals are seated correctly.

**Disposal**

To protect against transport damage, your product is delivered by a solid packaging.

The packaging is made from recyclable materials. Dispose of them in an environmentally friendly manner.

Don't throw the product into the normal household waste at the end of its service life, but inquire with your local government about the options for environmentally friendly disposal.

**Technical specifications**

1. Pressure: recommended 3-12 bar, if more than 12 bar please install pressure reducer.
2. Water temperature: Max. 80°C.

**Service-Address**

Importer: Dylin GmbH

Address: Humboldtstr. 25A, 21509 Glinde, Germany.

© 2018 Dylin GmbH. All rights reserved.