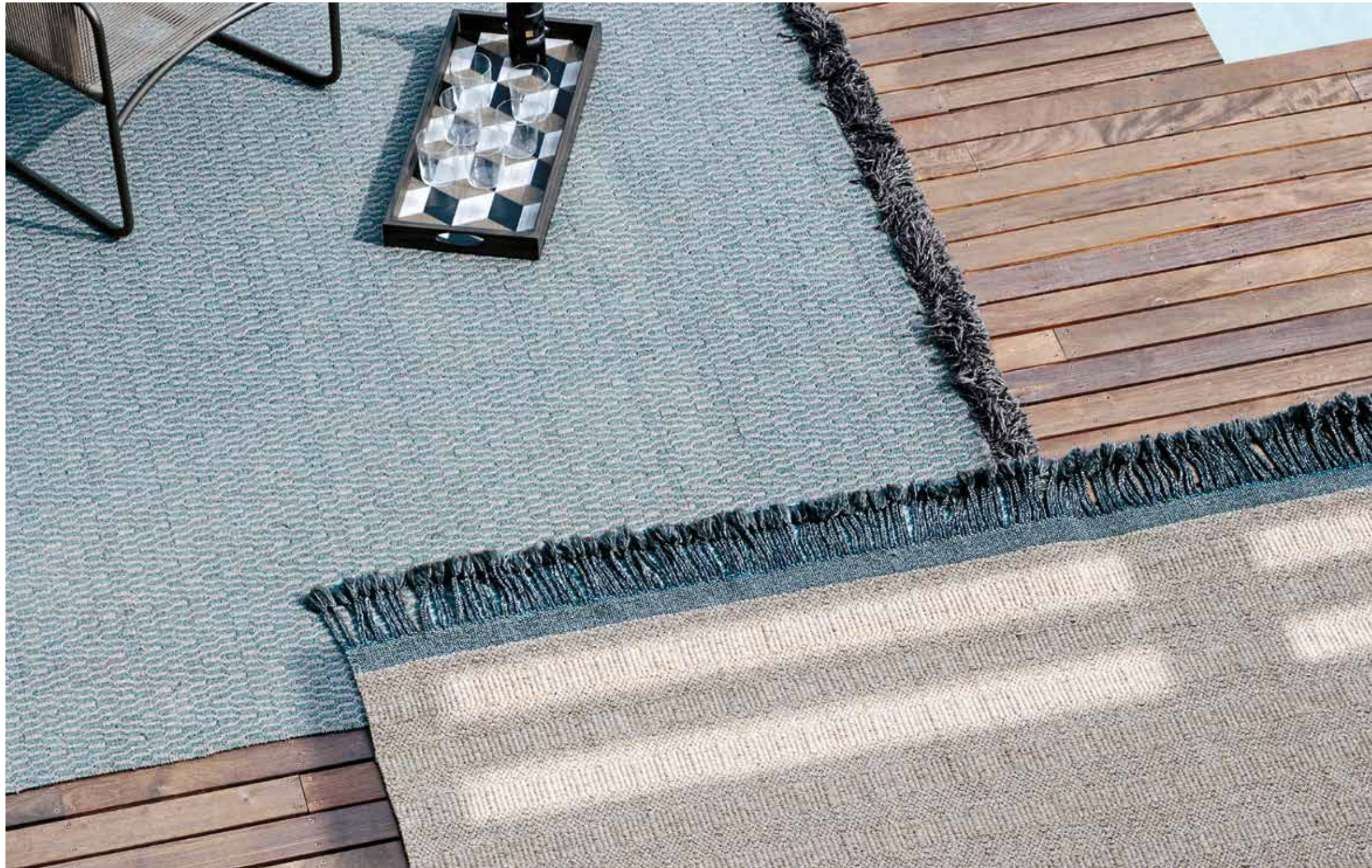


Atlas 001 Rug

Design Gordon Guillaumier
Design Maria Gabriella Zecca

Technical Information



A collection of designer rugs with a contemporary taste that combine sobriety, refinement and naturalness; handmade on a frame, enhance the garden furniture and offer outdoor performance of the highest level, while maintaining a soft and elegant appearance. The ATLAS collection develops around patterns inspired by jacquard, with an exclusive but not intrusive geometric effect, which combines perfectly with the style of outdoor furniture of all collections, also thanks to elegant and inedited colour combinations.

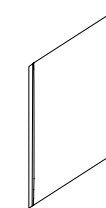
TECHNICAL INFORMATION

DESCRIPTION
Rug for outdoor use.

STRUCTURE
100% polypropylene.
Hand-woven on loom

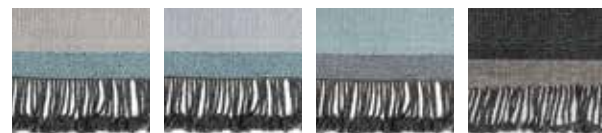
WEIGHT
Structure 14 kg

DIMENSION
300 x 200 cm
118" ³/₄ x 78" ³/₄



Materials

POLYPROPYLENE



Clay

Pearl

Water

Lead

Atlas 002 Rug

Design Gordon Guillaumier
Design Maria Gabriella Zecca

Technical Information



A collection of designer rugs with a contemporary taste that combine sobriety, refinement and naturalness; handmade on a frame, enhance the garden furniture and offer outdoor performance of the highest level, while maintaining a soft and elegant appearance. The ATLAS collection develops around patterns inspired by jacquard, with an exclusive but not intrusive geometric effect, which combines perfectly with the style of outdoor furniture of all collections, also thanks to elegant and inedited colour combinations.

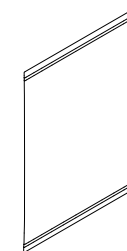
TECHNICAL INFORMATION

DESCRIPTION
Rug for outdoor use.

STRUCTURE
100% polypropylene.
Hand-woven on loom

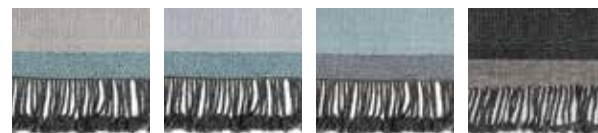
WEIGHT
Structure 34 kg

DIMENSION
400 x 300 cm
157" 1/2 x 118" 3/4



Materials

POLYPROPYLENE



Clay

Pearl

Water

Lead