

KOSTER Ø50

TAVOLINO | SIDE TABLE

Design S. Tollgard

2018



KOSTER Ø50

Design S. Tollgard

TAVOLINO | SIDE TABLE

2018

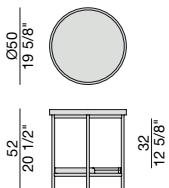
Tavolino tondo con struttura in metallo finitura Bronzoro e piani in frassino, oppure piano superiore in Rock e piano inferiore in frassino. Piedini in ottone spazzolato.

Round side table with metal frame in Bronzoro finish and tops in ash, or upper top in Rock and lower top in ash. End feet in brushed brass.

Runder Beistelltisch mit Metallgestell mit Bronzoro Finish und Ablagen in Esche, oder oberer Ablage in Rock und unterer Ablage in Esche.. Spitzen aus gebürstetem Messing.

Guéridon rond avec structure en métal en finition Bronzoro et plateaux en frêne ou Plateau supérieur en Rock dans les coloris de la collection et plateau inférieur en frêne. Pieds en cuivre brossé.

Mesa auxiliar redonda con estructura de metal en acabado Bronzoro y tapas de fresno o tapa superior en Rock en los colores de la colección y tapa inferior de fresno. Pies acabados en latón cepillado.



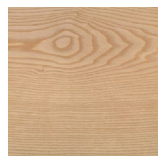
KOSTER Ø50 WOOD

Design S. Tollgard

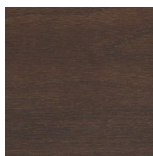
TAVOLINO | SIDE TABLE

2018

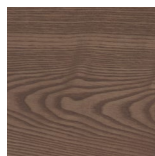
Essenze | Wood



FRASSINO NATURALE
Natural Ash



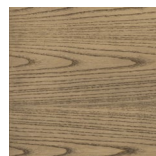
FRASSINO
Ash
tinto/stained moka



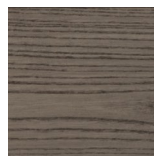
FRASSINO
Ash
tinto/stained
canaletta walnut



FRASSINO
Ash
tinto/stained wengé



FRASSINO
Ash
tinto/stained canapa



FRASSINO
Ash
tinto/stained caffè

Laccato opaco poro aperto | Matt Lacquered open pore



BIANCO
White
(RAL 9016)



AVORIO
Ivory
(RAL 1013)



ARGILLA
Argilla
(RAL 7006)



PIOMBO
Piombo
(NCS S5005G20Y)



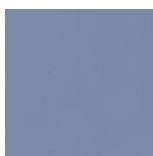
NERO
Black
(RAL 9005)



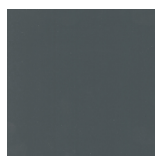
GRANATA
Granata
(NCS S4050Y90R)



PISTACCHIO
Pistacchio
(PANTONE 5825)



AVIO
Avio
(PANTONE 5415)

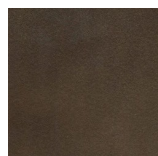


IRON
Iron
(RAL 7011)



CIOCCOLATO
Chocolate
(RAL 8019)

Metallo | Metal



BRONZORO

KOSTER Ø50 ROCK

Design S. Tollgard

TAVOLINO | SIDE TABLE

2018

Essenze | Wood



FRASSINONATURALE
Natural Ash



FRASSINO
Ash
tinto/stained moka



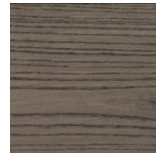
FRASSINO
Ash
tinto/stained
canaletta walnut



FRASSINO
Ash
tinto/stained wengé

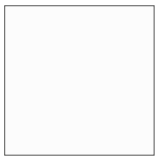


FRASSINO
Ash
tinto/stained canapa

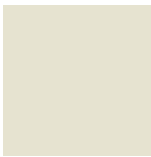


FRASSINO
Ash
tinto/stained caffè

Laccato opaco poro aperto | Matt Lacquered open pore



BIANCO
White
(RAL 9016)



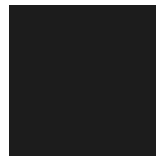
AVORIO
Ivory
(RAL 1013)



ARGILLA
Argilla
(RAL 7006)



PIOMBO
Piombo
(NCS S5005G20Y)



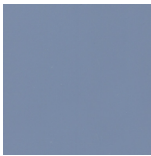
NERO
Black
(RAL 9005)



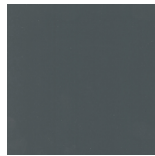
GRANATA
Granata
(NCS S4050Y90R)



PISTACCHIO
Pistacchio
(PANTONE 5825)



AVIO
Avio
(PANTONE 5415)



IRON
Iron
(RAL 7011)



CIOCCOLATO
Chocolate
(RAL 8019)

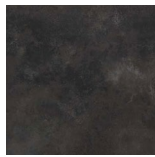
Rock | Rock



CALACATTA
Calacatta

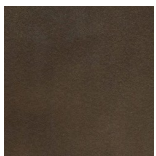


EMPERADOR
Emperador



BLACK OXIDE
Black Oxide

Metallo | Metal



BRONZORO

KOSTER Ø120

TAVOLINO | COFFEE TABLE

Design S. Tollgard

2018



KOSTER Ø120

Design S. Tollgard

TAVOLINO | COFFEE TABLE

2018

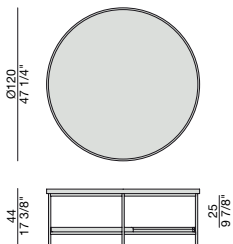
Tavolino tondo con struttura in metallo finitura Bronzoro e piani in frassino, oppure piano superiore in Rock e piano inferiore in frassino. Piedini in ottone spazzolato.

Round side table with metal frame in Bronzoro finish and tops in ash, or upper top in Rock and lower top in ash. End feet in brushed brass.

Runder Beistelltisch mit Metallgestell mit Bronzoro Finish und Ablagen in Esche, oder oberer Ablage in Rock und unterer Ablage in Esche. Spitzen aus gebürstetem Messing.

Guéridon rond avec structure en métal en finition Bronzoro et plateaux en frêne ou Plateau supérieur en Rock dans les coloris de la collection et plateau inférieur en frêne. Pieds en cuivre brossé.

Mesa auxiliar redonda con estructura de metal en acabado Bronzoro y tapas de fresno o tapa superior en Rock en los colores de la colección y tapa inferior de fresno. Pies acabados en latón cepillado.



KOSTER Ø120 WOOD

Design S. Tollgard

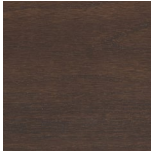
TAVOLINO | COFFEE TABLE

2018

Essenze | Wood



FRASSINO NATURALE
Natural Ash



FRASSINO
Ash
tinto/stained moka



FRASSINO
Ash
tinto/stained
canaletta walnut



FRASSINO
Ash
tinto/stained wengé

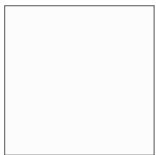


FRASSINO
Ash
tinto/stained canapa

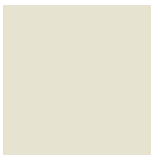


FRASSINO
Ash
tinto/stained caffè

Laccato opaco poro aperto | Matt Lacquered open pore



BIANCO
White
(RAL 9016)



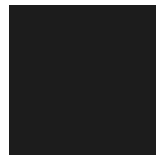
AVORIO
Ivory
(RAL 1013)



ARGILLA
Argilla
(RAL 7006)



PIOMBO
Piombo
(NCS S5005G20Y)



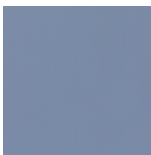
NERO
Black
(RAL 9005)



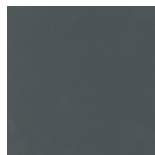
GRANATA
Granata
(NCS S4050Y90R)



PISTACCHIO
Pistacchio
(PANTONE 5825)



AVIO
Avio
(PANTONE 5415)

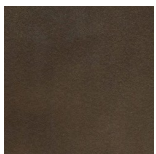


IRON
Iron
(RAL 7011)



CIOCCOLATO
Chocolate
(RAL 8019)

Metallo | Metal



BRONZORO

KOSTER Ø120 ROCK

Design S. Tollgard

TAVOLINO | COFFEE TABLE

2018

Essenze | Wood



FRASSINONATURALE
Natural Ash



FRASSINO
Ash
tinto/stained moka



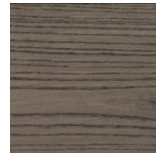
FRASSINO
Ash
tinto/stained
canaletta walnut



FRASSINO
Ash
tinto/stained wengé

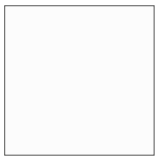


FRASSINO
Ash
tinto/stained canapa

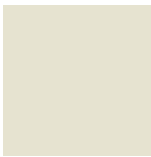


FRASSINO
Ash
tinto/stained caffè

Laccato opaco poro aperto | Matt Lacquered open pore



BIANCO
White
(RAL 9016)



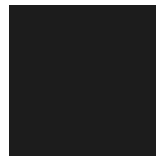
AVORIO
Ivory
(RAL 1013)



ARGILLA
Argilla
(RAL 7006)



PIOMBO
Piombo
(NCS S5005G20Y)



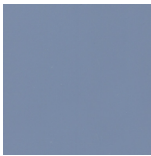
NERO
Black
(RAL 9005)



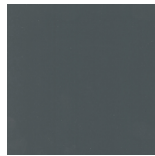
GRANATA
Granata
(NCS S4050Y90R)



PISTACCHIO
Pistacchio
(PANTONE 5825)



AVIO
Avio
(PANTONE 5415)



IRON
Iron
(RAL 7011)



CIOCCOLATO
Chocolate
(RAL 8019)

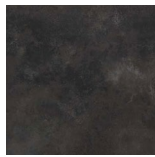
Rock | Rock



CALACATTA
Calacatta

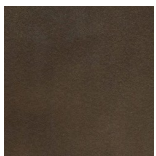


EMPERADOR
Emperador



BLACK OXIDE
Black Oxide

Metallo | Metal



BRONZORO

KOSTER 150X80

TAVOLINO | SIDE TABLE

Design S. Tollgard

2018



KOSTER 150X80

Design S. Tollgard

TAVOLINO | SIDE TABLE

2018

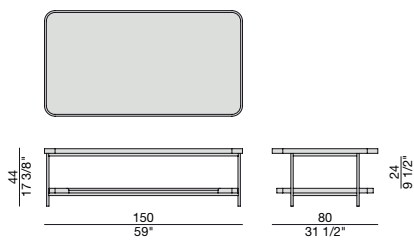
Tavolino rettangolare con struttura in metallo finitura Bronzoro e piani in frassino, oppure piano superiore in Rock e piano inferiore in frassino. Piedini in ottone spazzolato.

Rectangular coffee table with metal frame in Bronzoro finish and tops in ash, or upper top in Rock and lower top in ash. End feet in brushed brass.

Rechteckiger Beistelltisch mit Metallgestell mit Bronzoro Finish und Ablagen in Esche, oder oberer Ablage in Rock und unterer Ablage in Esche.. Spitzen aus gebürstetem Messing.

Table basse rectangulaire avec structure en métal en finition Bronzoro et plateaux en frêne ou Plateau supérieur en Rock dans les coloris de la collection et plateau inférieur en frêne. Pieds en cuivre brossé.

Mesa de centro rectangular con estructura de metal en acabado Bronzoro y tapas de fresno o tapa superior en Rock en los colores de la colección y tapa inferior de fresno. Pies acabados en latón cepillado.



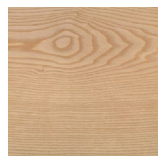
KOSTER 150X80 WOOD

Design S. Tollgard

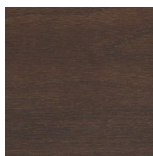
TAVOLINO | SIDE TABLE

2018

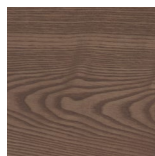
Essenze | Wood



FRASSINO NATURALE
Natural Ash



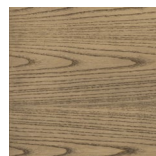
FRASSINO
Ash
tinto/stained moka



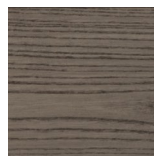
FRASSINO
Ash
tinto/stained
canaletta walnut



FRASSINO
Ash
tinto/stained wengé



FRASSINO
Ash
tinto/stained canapa



FRASSINO
Ash
tinto/stained caffè

Laccato opaco poro aperto | Matt Lacquered open pore



BIANCO
White
(RAL 9016)



AVORIO
Ivory
(RAL 1013)



ARGILLA
Argilla
(RAL 7006)



PIOMBO
Piombo
(NCS S5005G20Y)



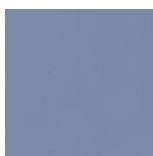
NERO
Black
(RAL 9005)



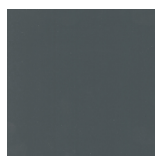
GRANATA
Granata
(NCS S4050Y90R)



PISTACCHIO
Pistacchio
(PANTONE 5825)



AVIO
Avio
(PANTONE 5415)

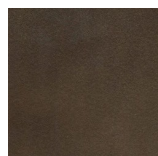


IRON
Iron
(RAL 7011)



CIOCCOLATO
Chocolate
(RAL 8019)

Metallo | Metal



BRONZORO

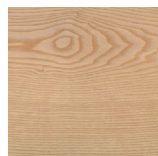
KOSTER 150X80 ROCK

Design S. Tollgard

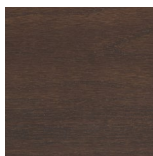
TAVOLINO | SIDE TABLE

2018

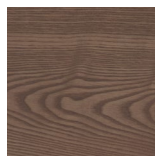
Essenze | Wood



FRASSINONATURALE
Natural Ash



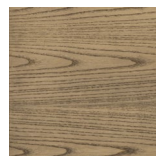
FRASSINO
Ash
tinto/stained moka



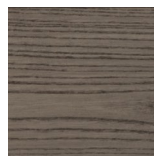
FRASSINO
Ash
tinto/stained
canaletta walnut



FRASSINO
Ash
tinto/stained wengé



FRASSINO
Ash
tinto/stained canapa



FRASSINO
Ash
tinto/stained caffè

Laccato opaco poro aperto | Matt Lacquered open pore



BIANCO
White
(RAL 9016)



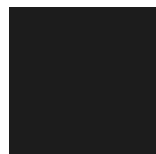
AVORIO
Ivory
(RAL 1013)



ARGILLA
Argilla
(RAL 7006)



PIOMBO
Piombo
(NCS S5005G20Y)



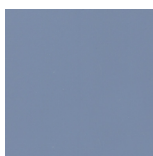
NERO
Black
(RAL 9005)



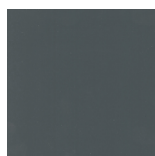
GRANATA
Granata
(NCS S4050Y90R)



PISTACCHIO
Pistacchio
(PANTONE 5825)



AVIO
Avio
(PANTONE 5415)

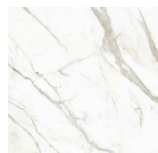


IRON
Iron
(RAL 7011)

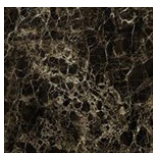


CIOCCOLATO
Chocolate
(RAL 8019)

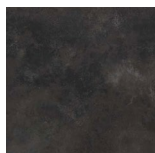
Rock | Rock



CALACATTA
Calacatta

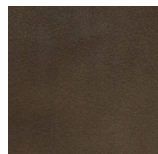


EMPERADOR
Emperador



BLACK OXIDE
Black Oxide

Metallo | Metal



BRONZORO