

MAC FAUCETS

Electronic, Sensor Liquid Soap Dispenser



PYOS-1405 MATCHING FAUCET FA400-1405

Features:

- Dispenses Standard liquid Soap.
- Soap Amount is Adjustable.
- Noise Free Reliable Operation.
- Battery Powered, AC Optional.
- Easy to **Refill** Soap System Design.
- Available in *Twenty + Matching finishes*

Package Includes

Spout

Soap Pump

All Hose Connections between Pump and Spout

800ml Soap Bottle

Battery Case and Case Holder

Mounting Hardware

Remote Control Optional

All hardware necessary for satisfactory installation

**DESIGNED
& ASSEMBLED IN**

U.S.A.

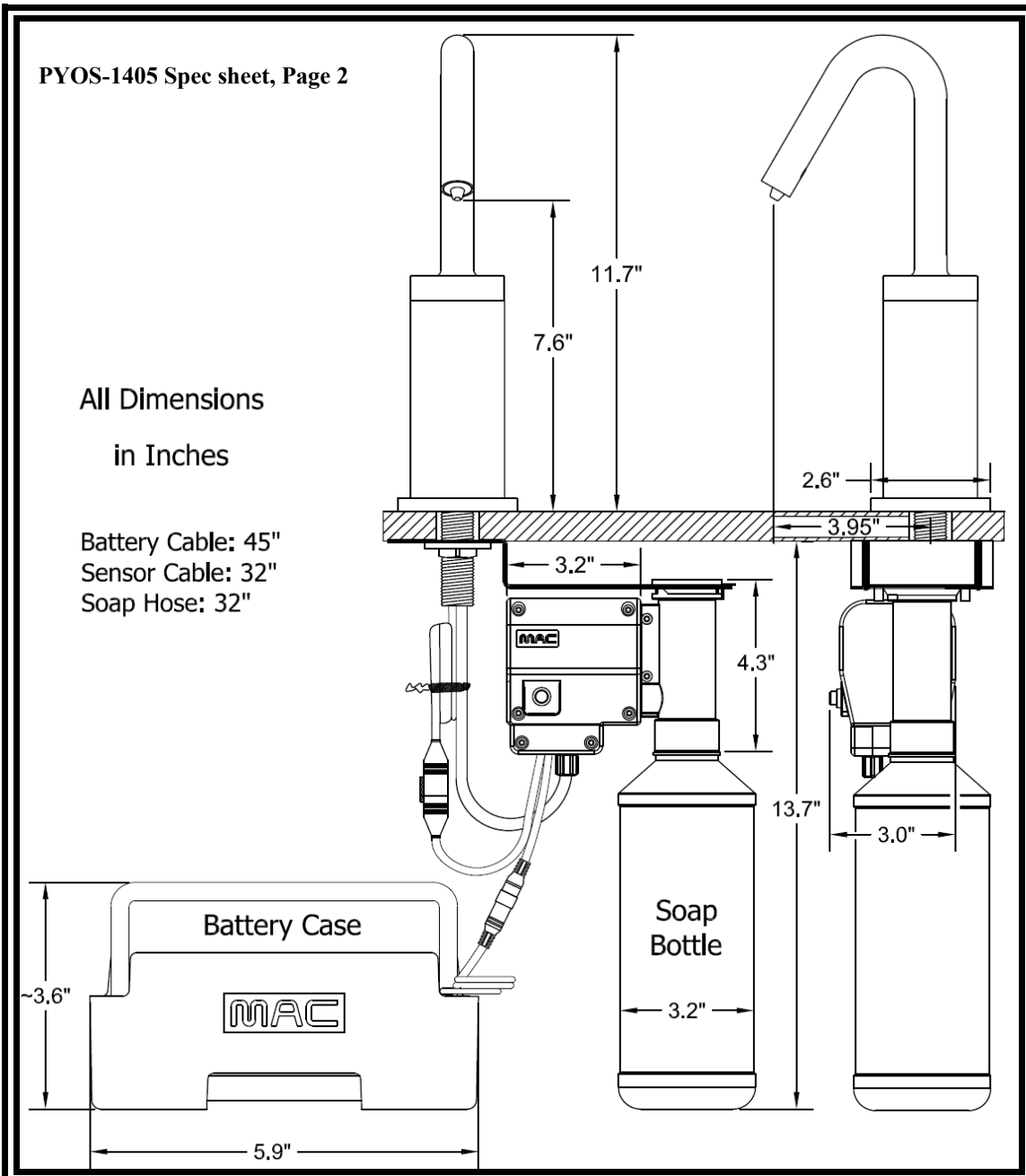


BEST SUITED FOR VESSEL SINK APPLICATIONS WHERE THE TOP OF THE SINK IS 5" ABOVE THE COUNTERTOP SURFACE

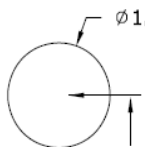
SPECIFICATIONS	
MODEL:	PYOS-1405
SPOUT:	BRASS
POWER:	4 (D) BATTERIES / AC ADAPTER OPTIONAL
SOAP PUMP:	6 VOLT NOISE-FREE PERISTALTIC PUMP SYSTEM
COUNTER ACCOMMODATIONS:	PLEASE VIEW ROUGH-IN DRAWINGS ON PAGE TWO
SENSOR TYPE:	ACTIVE INFRARED, SELF-ADJUSTING
SENSING RANGE:	ADJUSTABLE WITH <u>OPTIONAL REMOTE CONTROL</u>
WORKING SOAP:	STANDARD LIQUID SOAP. NO GRIT (INDUSTRIAL) SOAP
SOAP BOTTLE CAPACITY:	800ML (JUST UNDER A QUART) <u>OPTIONAL 1 GALLON CONTAINERS</u>
SOAP AMOUNT PER USE:	0.5ML TO 1.5ML, ADJUSTABLE WITH <u>OPTIONAL REMOTE CONTROL</u>

All Dimensions
in Inches

Battery Cable: 45"
Sensor Cable: 32"
Soap Hose: 32"



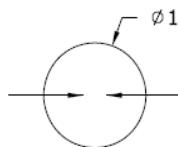
Soap Dispenser
Hole



ϕ 1.25 to 1.5"
Linear distance
between holes
4" min, 40" max,
Center to Center

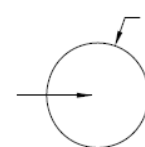
Rough-in

Faucet Hole



ϕ 1.25 to 1.5"
Linear distance
between holes
4" min, 40" max,
Center to Center

Lotion Dispenser
Hole



ϕ 1.25 to 1.5"
Linear distance
between holes
4" min, 40" max,
Center to Center

1.5" — Standard recommendation (center of hole to edge of sink or stone top)

Maximum Counter Top Thickness 2"

Optional Equipment:

- AC Adapter
- Remote Control (one for many dispensers)
- 1 Gallon capacity container.

MAC FAUCETS, LLC

www.macfaucets.com Tel 866 558 3200 Fax 310 919 3073 Email Info@macfaucets.com