



ASD-23

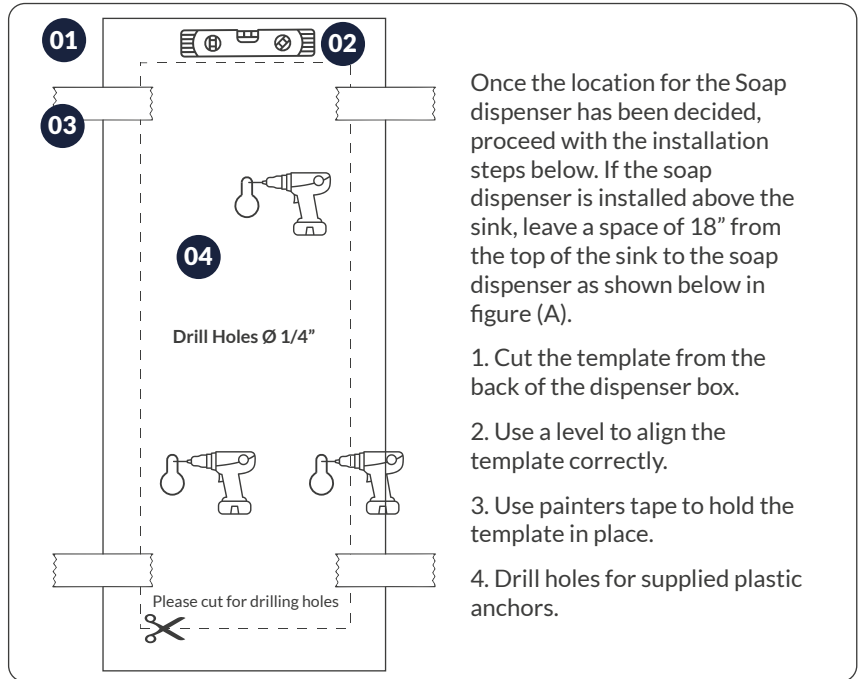
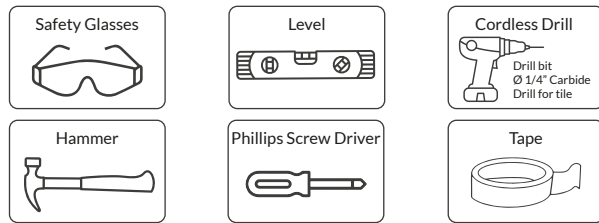


Package Includes

- ✓ Soap Dispenser
- ✓ Stainless Steel Construction
- ✓ Dispenses **Foam Soap Only**, commonly found in retail stores
- ✓ 1000ml Integral / Soap Bottle
- ✓ Vandal Key
- ✓ Integral Battery Compartment
- ✓ Mounting Hardware
- ✓ **Batteries Pre-installed** (6 AA)
- ✓ All hardware necessary for satisfactory installation



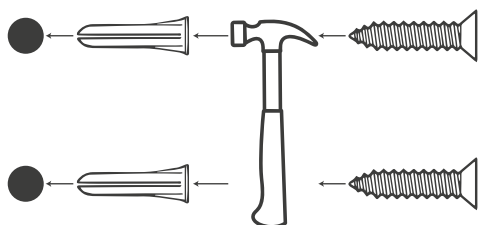
Tools Needed



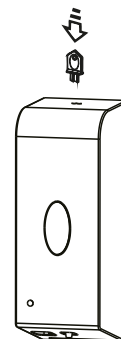
Once the location for the Soap dispenser has been decided, proceed with the installation steps below. If the soap dispenser is installed above the sink, leave a space of 18" from the top of the sink to the soap dispenser as shown below in figure (A).

1. Cut the template from the back of the dispenser box.
2. Use a level to align the template correctly.
3. Use painters tape to hold the template in place.
4. Drill holes for supplied plastic anchors.

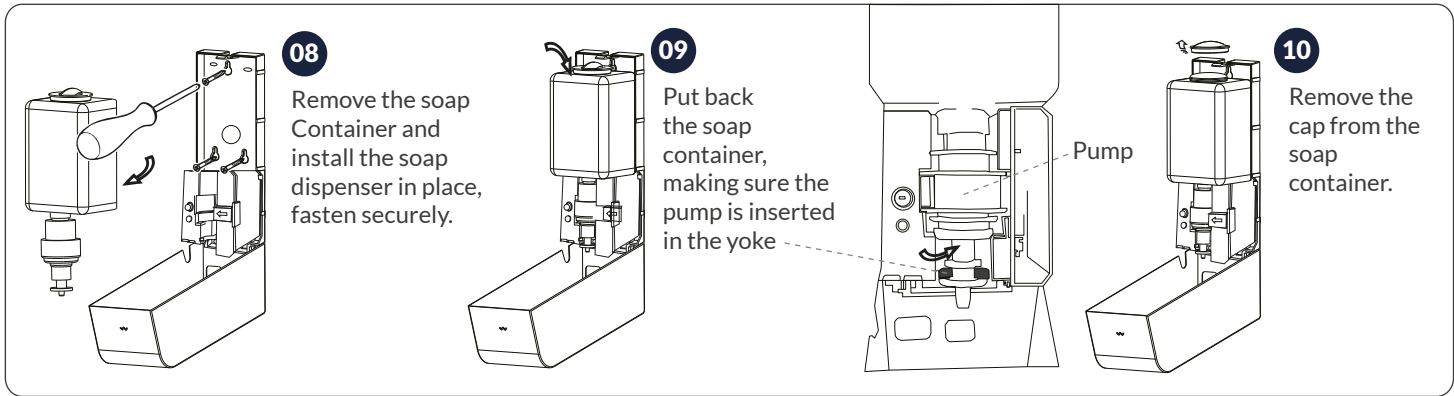
05 Place the plastic anchors in the holes. Drive them in with a lite hammer.



06 Align the holes of the dispenser with the holes of the anchors. Insert screws in and fasten using a Phillips screw driver.



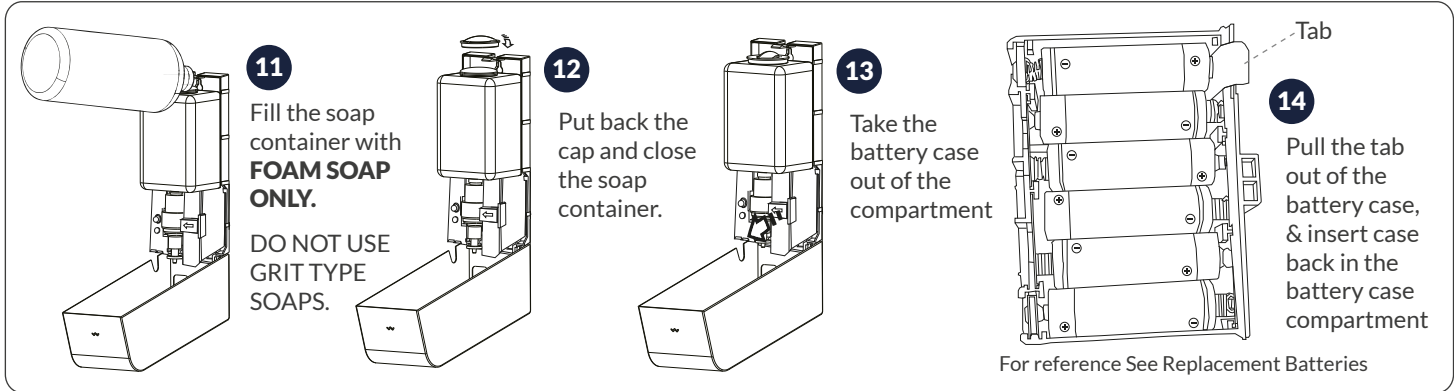
07 Insert the key into the hole located at the top of the dispenser, push down with the key and pull the cover forward. The cover engages a power cut-off switch located in the dispenser. The dispenser will not activate when the cover is in the open position.



08 Remove the soap Container and install the soap dispenser in place, fasten securely.

09 Put back the soap container, making sure the pump is inserted in the yoke

10 Remove the cap from the soap container.



11 Fill the soap container with **FOAM SOAP ONLY**.
DO NOT USE GRIT TYPE SOAPS.

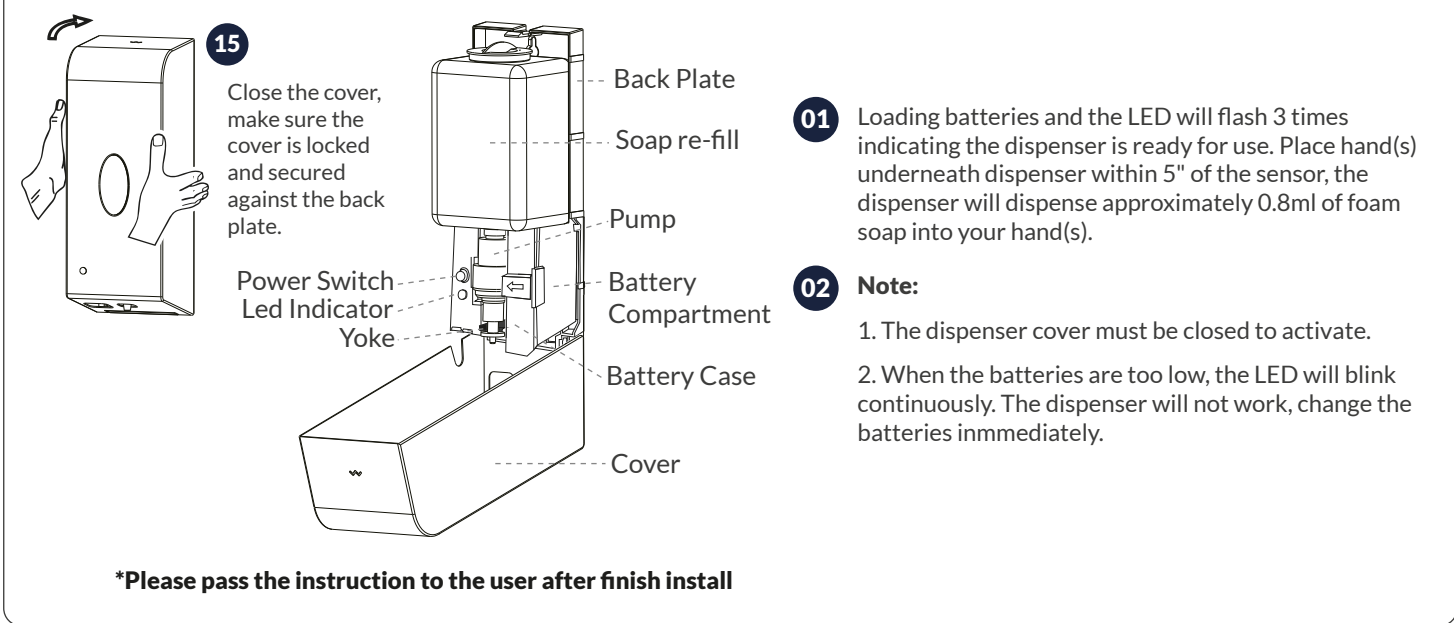
12 Put back the cap and close the soap container.

13 Take the battery case out of the compartment

14 Pull the tab out of the battery case, & insert case back in the battery case compartment

For reference See Replacement Batteries

Usage:



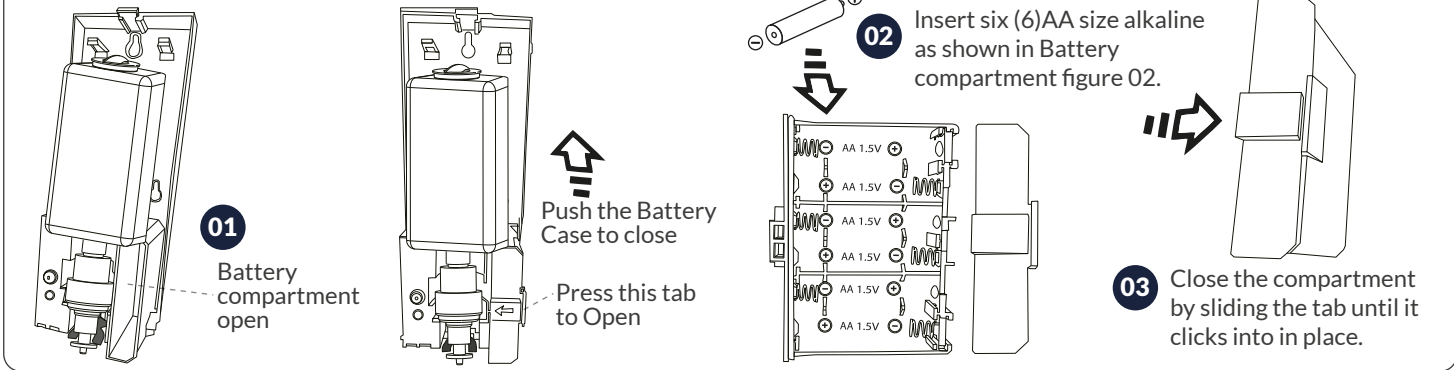
15 Close the cover, make sure the cover is locked and secured against the back plate.

01 Loading batteries and the LED will flash 3 times indicating the dispenser is ready for use. Place hand(s) underneath dispenser within 5" of the sensor, the dispenser will dispense approximately 0.8ml of foam soap into your hand(s).

02 Note:
1. The dispenser cover must be closed to activate.
2. When the batteries are too low, the LED will blink continuously. The dispenser will not work, change the batteries immediately.

***Please pass the instruction to the user after finish install**

Replacing Batteries



01 Battery compartment open

Push the Battery Case to close
Press this tab to Open

02 Insert six (6)AA size alkaline as shown in Battery compartment figure 02.

03 Close the compartment by sliding the tab until it clicks into in place.