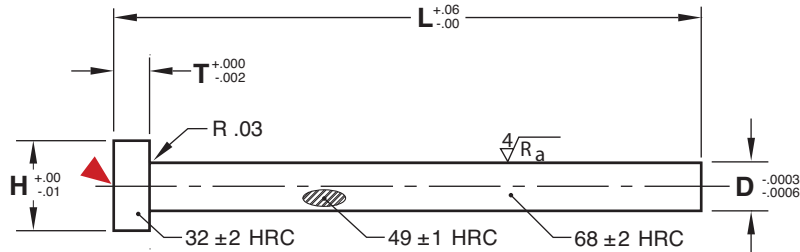
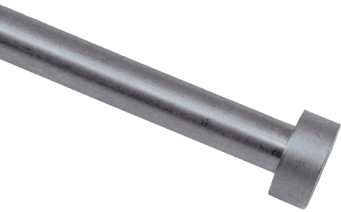


ULTRAPINS®

TREATED STRAIGHT PINS



M H-13 **H** Core: 48-50 HRC, Surface: 66-70 HRC **M** Chrome Plated: .00005-.00007" Thick CAD insertion point

Nominal Diameter	D Actual Diameter	H	T	L=6" D Standard	L=10" D Standard	L=14" D Standard	D Actual Oversized Pin Diam.	L=10" D .005 Oversize
1/16	.0622 .0619	.25	.125	—	EPL062L10	—	—	—
5/64	.0778 .0775	.25	.125	—	EPL078L10	—	—	—
3/32	.0934 .0931	.25	.125	—	EPL094L10	—	—	—
1/8	.1247 .1244	.25	.125	EPL125L6	EPL125L10	EPL125L14	.1297 .1294	EPL130L10
5/32	.1560 .1557	.28	.156	EPL156L6	EPL156L10	—	.1610 .1607	EPL161L10
3/16	.1872 .1869	.37	.187	EPL187L6	EPL187L10	EPL187L14	.1922 .1919	EPL192L10
7/32	.2185 .2182	.40	.187	EPL219L6	EPL219L10	—	.2235 .2232	EPL224L10
1/4	.2497 .2494	.43	.187	EPL250L6	EPL250L10	EPL250L14	.2547 .2544	EPL255L10
5/16	.3122 .3119	.50	.250	EPL312L6	EPL312L10	EPL312L14	—	—
3/8	.3747 .3744	.62	.250	EPL375L6	EPL375L10	EPL375L14	—	—
7/16	.4372 .4369	.69	.250	EPL437L6	EPL437L10	EPL437L14	—	—
1/2	.4997 .4994	.75	.250	—	EPL500L10	EPL500L14	—	—

To order pins with the keys tangent to the diameter, add "-K" to the end of the catalog number.
For Ultra Pins cut-to-length or with non-tangent keys, refer to page A-1.

Application Guidelines:

- Maximum operating temperature: 660° F (350° C).
- Not recommended for Die Cast or PVC molding.
- Contact Customer Service for availability on other diameters and lengths not shown.