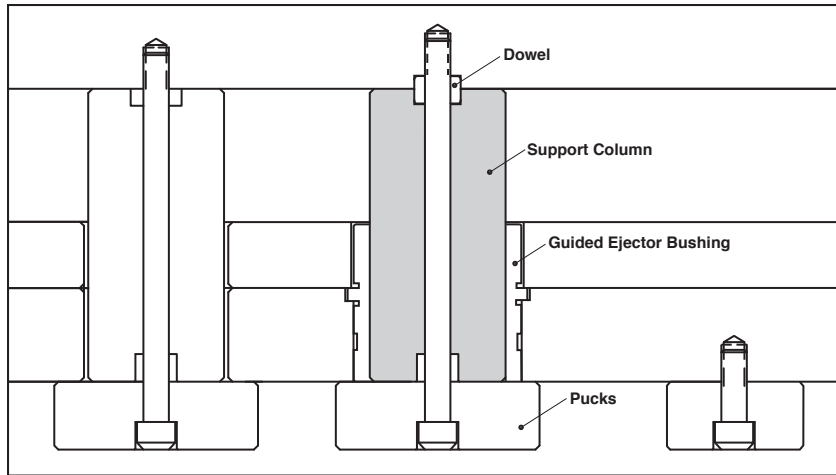
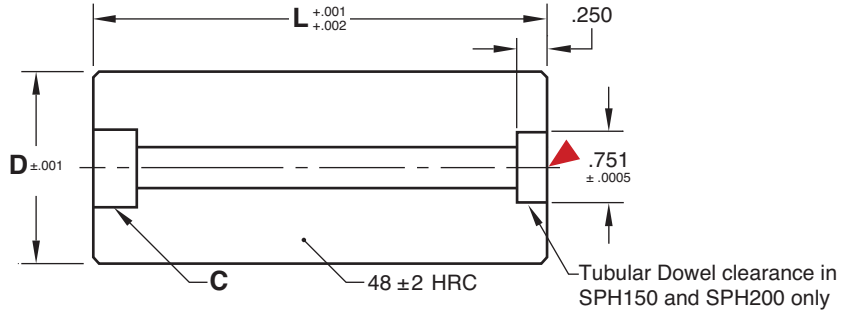
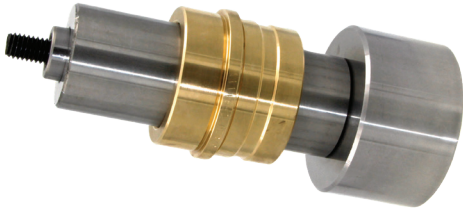


# SUPPORT COLUMNS FOR DIE CAST DIES



**M** AISI 4140 **H** 46-50 HRC

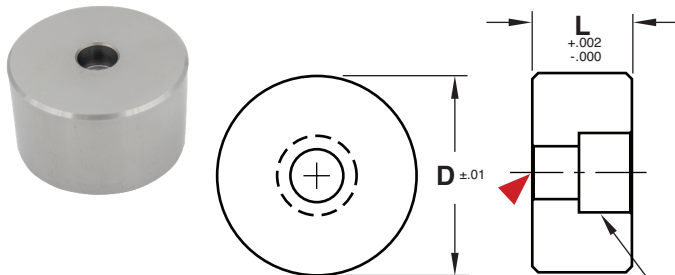
CAD insertion point

Nominal Diameter	D ±.001	CATALOG NUMBER	L +.001 +.002	C
1.5	1.496	SPH150L3	3	3/8-16
		SPH150L3.5	3.5	
		SPH150L4	4	
		SPH150L4.5	4.5	
		SPH150L5	5	
2	1.996	SPH200L3	3	3/8-16
		SPH200L3.5	3.5	
		SPH200L4	4	
		SPH200L4.5	4.5	
		SPH200L5	5	
		SPH200L6	6	

Nominal Diameter	D ±.001	CATALOG NUMBER	L +.001 +.002	C
3	2.996	SPH300L4	4	5/8-11
		SPH300L4.5	4.5	
		SPH300L5	5	
		SPH300L6	6	
		SPH300L7	7	
		SPH300L8	8	
4	3.996	SPH400L5	5	5/8-11
		SPH400L6	6	
		SPH400L7	7	
		SPH400L8	8	

Guided Ejector Bushings sold separately on page B-12.

## SUPPORT COLUMN PUCKS



Counterbored for 3/8-16 SHCS except for SDB75L1 (1/4-20 SHCS)

**M** AISI 1018

CAD insertion point

D ±.01	L=.75	L=1.00	L=1.50	L=2.00
.750	—	SDB75L1*	—	—
1.000	SDB100L.75	SDB100L1	SDB100L1.5	—
1.500	SDB150L.75	SDB150L1	SDB150L1.5	—
2.000	—	SDB200L1	SDB200L1.5	—
2.500	—	SDB250L1	SDB250L1.5	SDB250L2
3.000	—	SDB300L1	SDB300L1.5	SDB300L2
4.000	—	—	SDB400L1.5	SDB400L2
5.000	—	—	SDB500L1.5	SDB500L2

Sized for retaining pin plates in die cast dies.

Screws included.

\* L = 1.125 for SDB75L1