



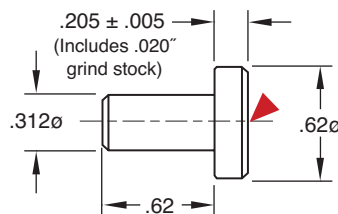
# STOP PINS

## Dowel Type

**M** Pre-Hard Steel **H** Black Oxide

CATALOG NUMBER	DESCRIPTION
STP-1	Stop Pins

▶ CAD insertion point

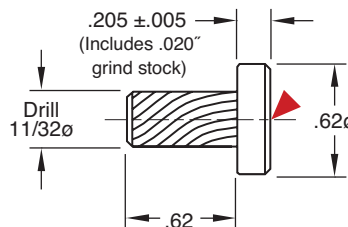


## Self-Tapping

**M** AISI 4037 **H** 40-44 HRC **S** Black Oxide

CATALOG NUMBER	DESCRIPTION
STP-2	Self-Tapping Stop Pins

▶ CAD insertion point



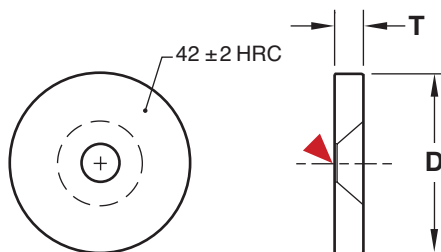
# STOP DISCS

**M** 4140 **H** 40-44 HRC **S** Black Oxide

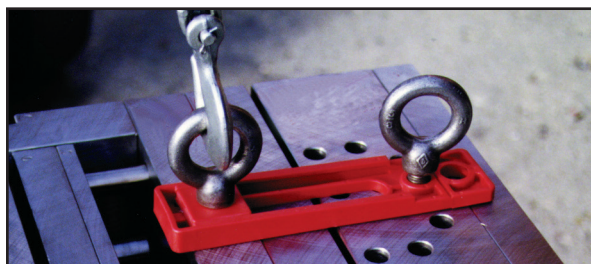
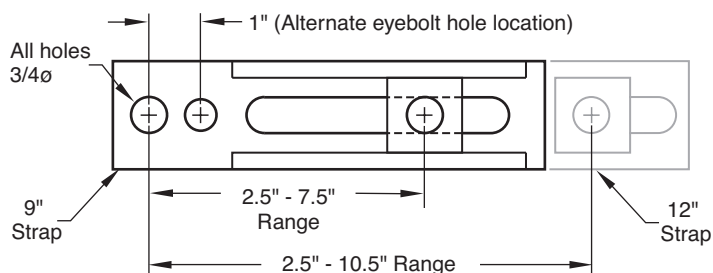
CATALOG NUMBER	D +0.000 -0.015	T +0.003 +0.005	Flat Head Counterbore
SD68	.687	.188	#10-24
SD100	1.000	.188	1/4-20
SD118	1.187	.188	1/4-20
SD168	1.687	.251	5/16-18

1/2" long FHCS included.

▶ CAD insertion point



# MOLD STRAPS



For use with shoulder-type eyebolts only (1/2" - 3/4").  
Patented design by G.A.I.M. Engineering.

**M** 100% recycled reinforced Nylon

CATALOG NUMBER	DESCRIPTION
MSTRP-9	Plastic Mold Strap, 9" long
MSTRP-12	Plastic Mold Strap, 12" long