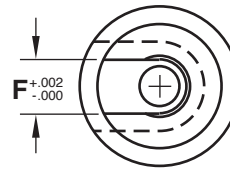
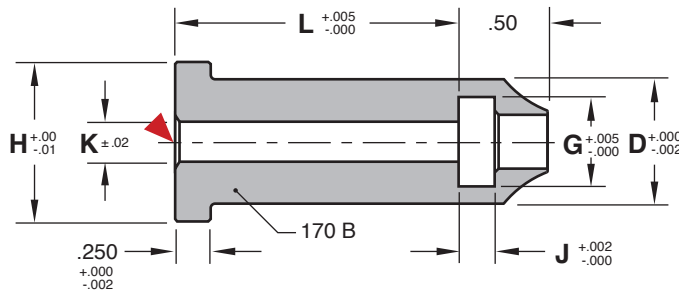


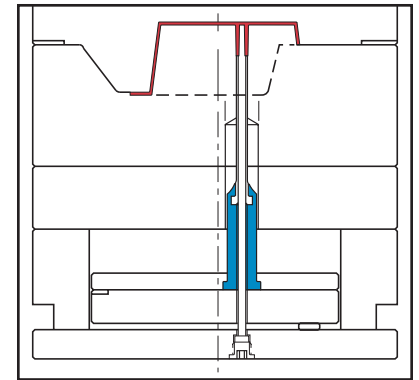


SLEEVE EXTENSIONS



M AISI 1215 **H** 170 Brinell **M** Black Oxide

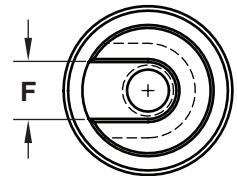
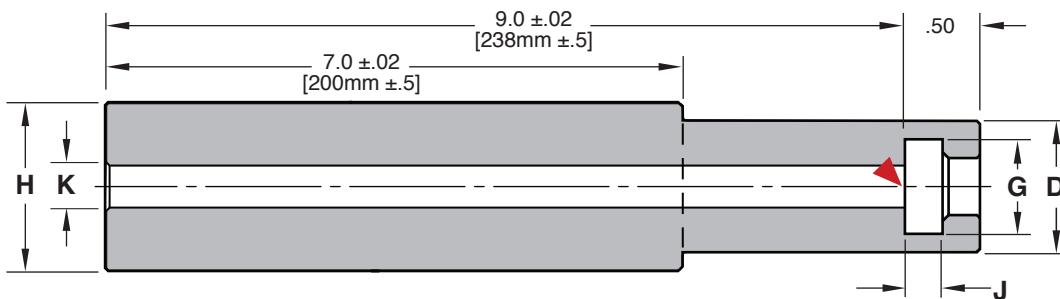
CAD insertion point



Nominal Sleeve I.D.	D O.D.	F	G	H	J	K	L=2"	L=3"	L=4"
3/32	.625	.193	.385	.875	.188	.18	SXT094L2	SXT094L3	—
1/8	.625	.224	.416	.875	.188	.18	SXT125L2	SXT125L3	SXT125L4
5/32	.625	.255	.448	.875	.188	.18	SXT156L2	SXT156L3	SXT156L4
3/16	.875	.318	.520	1.125	.251	.21	SXT187L2	SXT187L3	SXT187L4
7/32	.875	.349	.570	1.125	.251	.25	SXT219L2	SXT219L3	SXT219L4
1/4	.875	.380	.630	1.125	.251	.28	SXT250L2	SXT250L3	SXT250L4
5/16	1.000	.443	.698	1.250	.251	.34	SXT312L2	SXT312L3	SXT312L4
3/8	1.000	.505	.760	1.250	.251	.41	SXT375L2	SXT375L3	SXT375L4

SLEEVE EXTENSIONS: BLANKS

For extending a Sleeve, begin with a Sleeve Extension Blank and lathe turn the "H" dimension to a standard Ejector Pin head size.



Inch Standard

M AISI 1215 **H** 170 Brinell

CATALOG NUMBER	Nominal Sleeve I.D.	D O.D.	F $+0.002$ / -0.000	G $+0.005$ / -0.000	H $+0.00$ / -0.01	J $+0.002$ / -0.000	K ± 0.02
SXT094-B	3/32	.625	.193	.385	.875	.188	.18
SXT125-B	1/8	.625	.224	.416	.875	.188	.18
SXT156-B	5/32	.625	.255	.448	.875	.188	.18
SXT187-B	3/16	.875	.318	.520	1.125	.251	.21
SXT219-B	7/32	.875	.349	.570	1.125	.251	.25
SXT250-B	1/4	.875	.380	.630	1.125	.251	.28
SXT312-B	5/16	1.000	.443	.698	1.250	.251	.34
SXT375-B	3/8	1.000	.505	.760	1.250	.251	.41

Metric Standard

M AISI 1215 **H** 170 Brinell

CAD insertion point

CATALOG NUMBER	Nominal Sleeve I.D.	D O.D.	F $+0.05$ / -0.00	G $+0.01$ / -0.00	H $+0.0$ / -0.2	J $+0.05$ / -0.00	K ± 0.2
SXTD02-B	2 - 2.2	14	4.15	8.3	22	3.03	4
SXTD03-B	2.5 - 3.2	16	5.15	10.3	22	3.03	4
SXTD05-B	3.5 - 5.5	20	8.15	14.3	26	5.03	6
SXTD06-B	6 - 6.2	22	10.15	16.3	28	5.03	7
SXTD08-B	8 - 8.2	25	12.15	20.3	32	7.03	9
SXTD10-B	10 - 12.5	32	16.15	22.3	40	7.03	13