

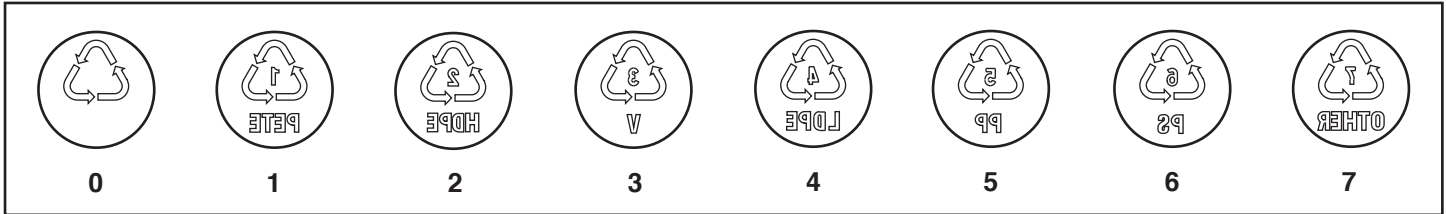
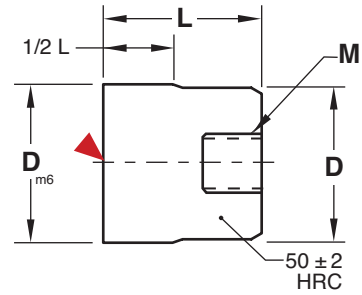
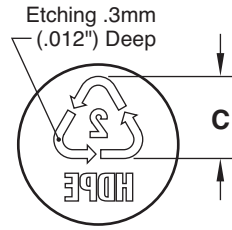
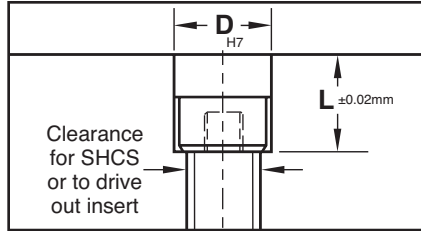
RECYCLE INSERTS

SPI STANDARD



Installation Guidelines:

To avoid damage to face, press insert into hole using a brass or plastic mallet.



M 420 Stainless (1.4034) **H** 50-54 HRC

CAD insertion point

CATALOG NUMBER	D	Material Code	Material	L	C	M
RI-10-0	10 mm (.3937")	N/A	BLANK	12 mm (.4724")	6 mm (.2362")	M5 x .08
RI-10-1		1	POLYETHYLENE TEREPHTHALATE			
RI-10-2		2	HIGH DENSITY POLYETHYLENE			
RI-10-3		3	POLYVINYL CHLORIDE			
RI-10-4		4	LOW DENSITY POLYETHYLENE			
RI-10-5		5	POLYPROPYLENE			
RI-10-6		6	POLYSTYRENE			
RI-10-7		7	OTHER			
RI-16-0	16 mm (.6299")	N/A	BLANK	14 mm (.5518")	10 mm (.3937")	M6 x 1.0
RI-16-1		1	POLYETHYLENE TEREPHTHALATE			
RI-16-2		2	HIGH DENSITY POLYETHYLENE			
RI-16-3		3	POLYVINYL CHLORIDE			
RI-16-4		4	LOW DENSITY POLYETHYLENE			
RI-16-5		5	POLYPROPYLENE			
RI-16-6		6	POLYSTYRENE			
RI-16-7		7	OTHER			
RI-20-0	20 mm (.7874")	N/A	BLANK	16 mm (.6299")	12 mm (.4724")	M6 x 1.0
RI-20-1		1	POLYETHYLENE TEREPHTHALATE			
RI-20-2		2	HIGH DENSITY POLYETHYLENE			
RI-20-3		3	POLYVINYL CHLORIDE			
RI-20-4		4	LOW DENSITY POLYETHYLENE			
RI-20-5		5	POLYPROPYLENE			
RI-20-6		6	POLYSTYRENE			
RI-20-7		7	OTHER			

Contact Customer Service for pricing and availability of other sizes or material engraving.