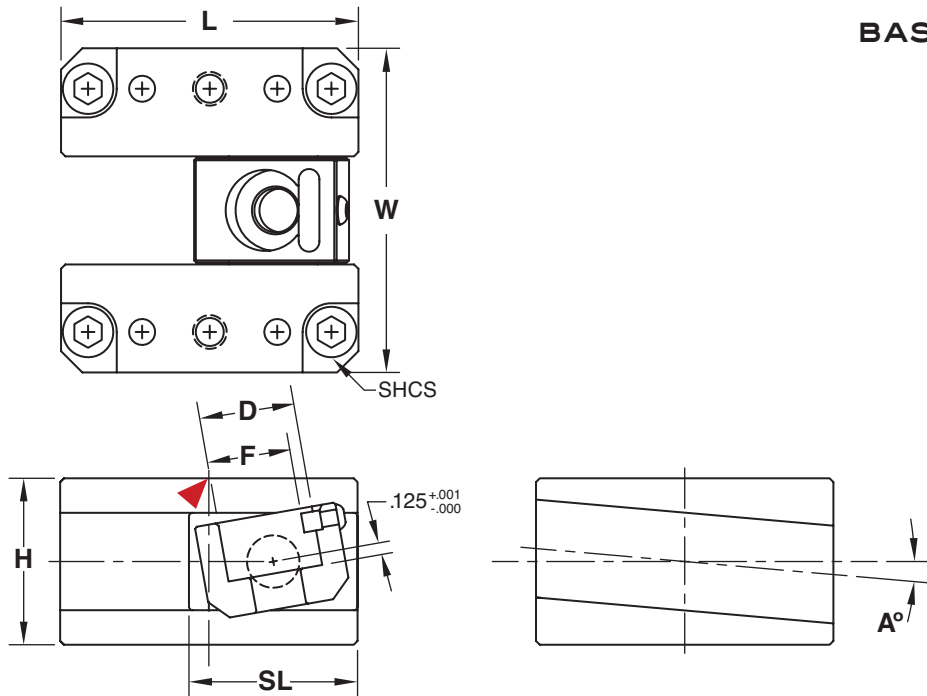
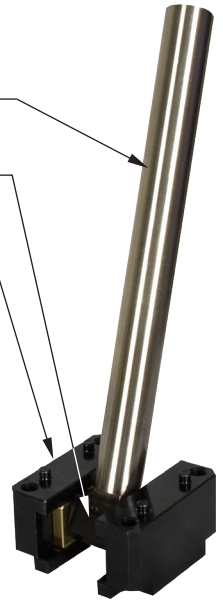




# MODULIFTER® BASE ASSEMBLY/LIFTER ROD



- Rod (sold separately)
- Base Assembly includes:
- Rod Coupling Assembly
  - Gibs (2)
  - Mounting Screws (4)
  - Dowels installed



## BASE ASSEMBLY

Gibs/Coupling: **M** 1045 **H** 28-32 HRC **S** Nitride Slides: **M** C86300 (Graphite Plugs if specified)

NOMINAL ROD DIAMETER Ø	CATALOG NUMBER			L +.000 -.015	W +.000 -.002	H +.000 -.001	D +.0003 -.0000	F +.0015 -.0000	SHCS	SL	TRAVEL (L-SL)
	A = 0°	A = 5°	A = 10°								
1/2	MLBA050	MLBA050-5	MLBA050-10	2.250	2.250	1.375	.5003	.4505	1/4-20 x 1-1/2	1.38	.87
5/8	MLBA063	MLBA063-5	MLBA063-10	2.625	2.500	1.375	.6253	.5905	1/4-20 x 1-1/2	1.57	1.06
3/4	MLBA075	MLBA075-5	MLBA075-10	2.750	3.000	1.750	.7503	.6905	5/16-18 x 2	1.57	1.18
1	MLBA100	MLBA100-5	MLBA100-10	3.125	3.250	1.750	1.0003	.8755	5/16-18 x 2	1.77	1.35
1-1/4	MLBA125	MLBA125-5	MLBA125-10	3.875	4.000	2.250	1.2503	1.1605	3/8-16 x 2-1/2	2.76	1.12
1-1/2	MLBA150	MLBA150-5	MLBA150-10	4.750	4.250	2.500	1.5003	1.4005	3/8-16 x 2-3/4	3.15	1.60

Notes:

- Includes (4) SHCS and (4) Dowels. For ModuLifter Base Assemblies with different Gib angles, contact tech@procomps.com.
- To order with Graphite Plugged Base, add GP to the part number as shown, Ex: MLBAGPxxx.



## LIFTER ROD



**M** 1045 **H** Core: 28-32 HRC, Surface: 56-58 HRC

D +.0000 -.0003	CATALOG NUMBER	L +.13 -.00	F +.000 -.001	G +.03 -.00	SHCS
.500	MLR050L14	14	.450	.50	1/4-20 x 5/8
.625	MLR063L14	14	.590	.56	5/16-18 x 3/4
.750	MLR075L16	16	.690	.68	3/8-16 x 7/8
1.000	MLR100L16	16	.875	.75	1/2-13 x 1
1.250	MLR125L18	18	1.160	.94	5/8-11 x 1-1/2
1.500	MLR150L18	18	1.400	1.00	5/8-11 x 1-1/2

Notes:

- Includes (1) screw for installation.
- For additional Lifter Rod lengths, contact tech@procomps.com.

