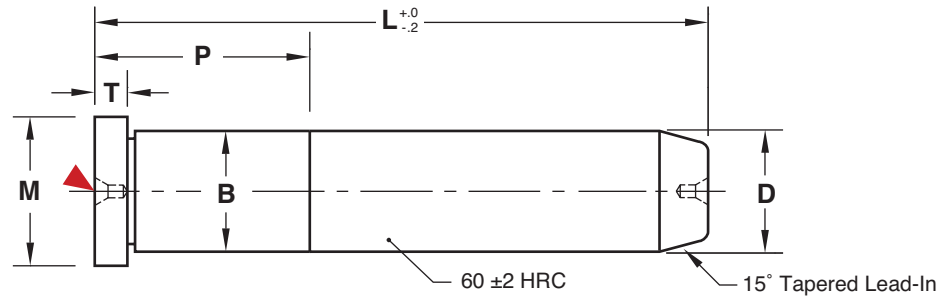
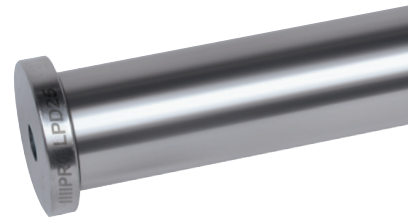




# LEADER PINS DIN STANDARD



### General Dimensions

D	B	M	T
-0.007 -0.026	+0.011 +0.002	+0.0 -0.2	
20	20	24	8
25	25	28	15
30	30	36	15

▶ CAD insertion point

**M** AISI 1117 (1.7131) **H** Core: Approx. 25 HRC, Surface: 58-62 HRC

L	D=20MM		D=25MM		D=30MM	
	P	Catalog Number	P	Catalog Number	P	Catalog Number
100	28	LPD20L100	35	LPD25L100	45	LPD30L100
120	28	LPD20L120	35	LPD25L120	45	LPD30L120
140	28	LPD20L140	35	LPD25L140	45	LPD30L140
160	—	—	—	—	45	LPD30L160

### Alternate Configurations Available:

- Leader Pins are available with Black Nitride treatment. To order, specify -BN at the end of the catalog number. Ex: LPD20L140-BN



For custom Leader Pins, refer to templates in section X.