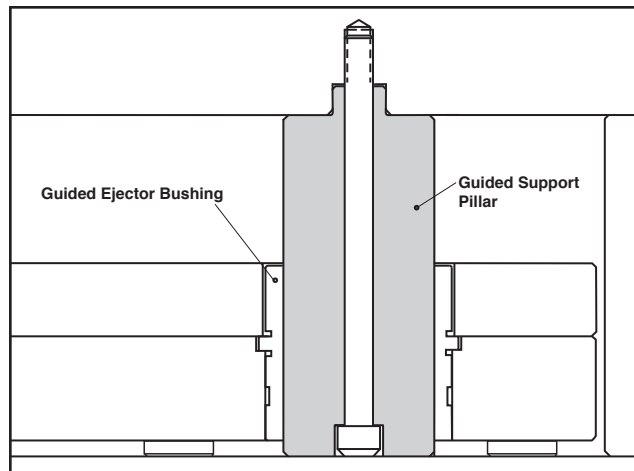
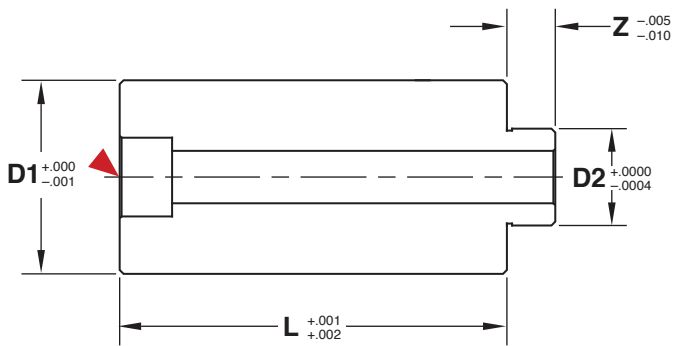




GUIDED SUPPORT PILLARS



M AISI 4140 **H** 58-62 HRC **S** Black Oxide

▶ CAD insertion point

Nominal Diameter	D1 +.000 -.001	D2 +.0000 -.0004	Z -.005 -.010	CATALOG NUMBER	L +.001 +.002	SHCS
.75	.7495	.4685	.278	GESP75L2.5	2.5	1/4-20 x 2.75"
				GESP75L3	3	1/4-20 x 3.25"
				GESP75L3.5	3.5	1/4-20 x 3.75"
				GESP75L4	4	1/4-20 x 4.25"
1	.9995	.4998	.309	GESP100L2.5	2.5	5/16-18 x 3"
				GESP100L3	3	5/16-18 x 3.5"
				GESP100L3.5	3.5	5/16-18 x 4"
				GESP100L4	4	5/16-18 x 4.5"
				GESP100L4.5	4.5	5/16-18 x 5"
1.25	1.2495	.6873	.309	GESP125L3	3	5/16-18 x 3.5"
				GESP125L3.5	3.5	5/16-18 x 4"
				GESP125L4	4	5/16-18 x 4.5"
				GESP125L4.5	4.5	5/16-18 x 5"
				GESP125L5	5	5/16-18 x 5.5"
1.5	1.4995	.7498	.372	GESP150L3.5	3.5	3/8-16 x 4"
				GESP150L4	4	3/8-16 x 4.5"
				GESP150L4.5	4.5	3/8-16 x 5"
				GESP150L5	5	3/8-16 x 5.5"

Notes: Includes (1) Socket Head Cap Screw as shown in the chart.
Guided Ejector Bushings are sold separately on page B-12.