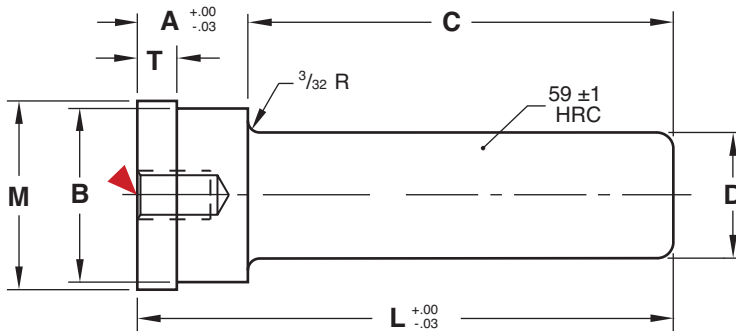




# GUIDED EJECTOR PINS

## SHOULDER STYLE



### General Dimensions

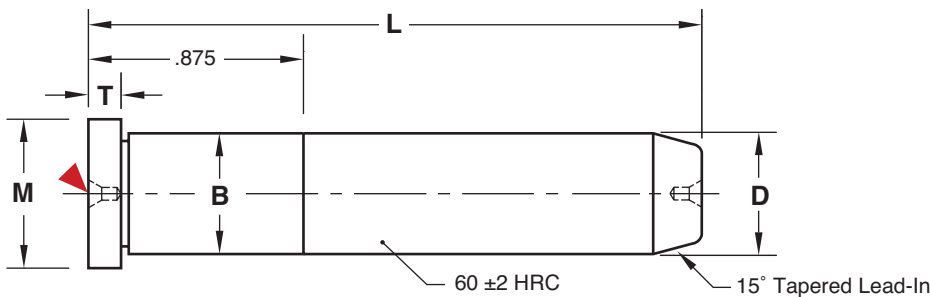
**M** AISI 8620 **H** Core: Approx. 25 HRC, Surface: 58-60 HRC

Nominal Diameter	D +.0000 -.0005	B +.0005 -.0000	M +.00 -.01	T +.000 -.015
1/2	.499	.751	.853	.187
3/4	.749	1.126	1.250	.312
1	.999	1.376	1.500	.312

A	C	L	D=1/2"	D=3/4"	D=1"
7/8	2-7/8	3-3/4	GEP50X87L375	—	—
	3-3/8	4-1/4	GEP50X87L425	GEP75X87L425	GEP100X87L425
	3-7/8	4-3/4	GEP50X87L475	GEP75X87L475	GEP100X87L475
	4-3/8	5-1/4	GEP50X87L525	GEP75X87L525	GEP100X87L525
	4-7/8	5-3/4	—	GEP75X87L575	GEP100X87L575
1-3/8	3-7/8	5-1/4	—	—	GEP100X137L525
	4-3/8	5-3/4	—	—	GEP100X137L575
	4-7/8	6-1/4	—	—	GEP100X137L625

For custom pins, refer to the templates in section X.

CAD insertion point



### STRAIGHT STYLE



### General Dimensions: Inch

**M** AISI 1117 **H** Core: Approx. 25 HRC, Surface: 58-62 HRC

D +.0000 -.0005	B +.0005 -.0000	M +.00 -.01	T +.000 -.015
.749	.751	.990	.187
.874	.876	1.115	.250
.999	1.001	1.240	.250

L +.00 -.03	D=3/4"	D=7/8"	D=1"
4-1/4	LP75L4.25-P	LP87L4.25-P	LP100L4.25-P
4-3/4	LP75L4.75-P	LP87L4.75-P	LP100L4.75-P
5-1/4	LP75L5.25-P	LP87L5.25-P	LP100L5.25-P
5-3/4	LP75L5.75-P	LP87L5.75-P	LP100L5.75-P
6-1/4	LP75L6.25-P	LP87L6.25-P	LP100L6.25-P

CAD insertion point

### Alternate Configurations Available:

- Leader Pins are available with Black Nitride treatment. To order, specify -BN at the end of the catalog number. Ex: LP100L6.25-P-BN

For custom pins, refer to the templates in section X.