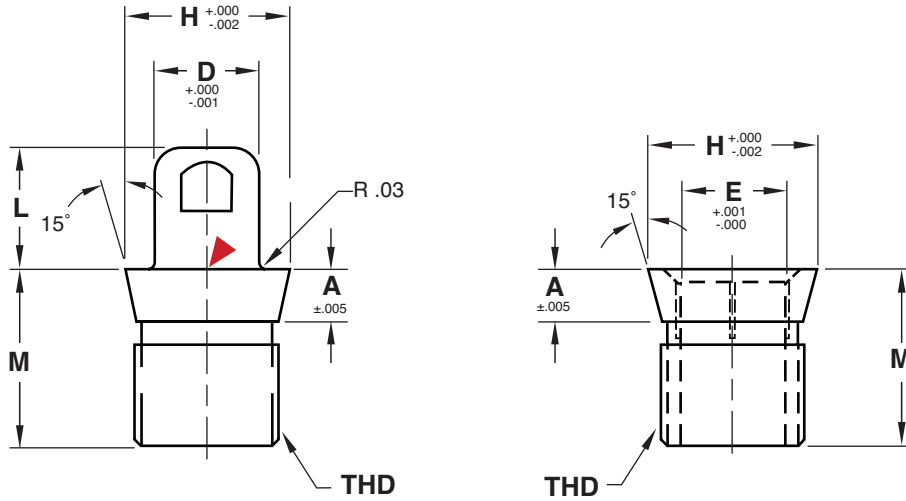
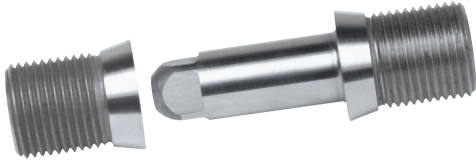


FRONT LOADING PINS AND BUSHINGS



M H-13 **H** Core: 40-45 HRC, Surface: 65-70 HRC **S** Nitride ▶ CAD insertion point

CATALOG NUMBER	Nominal Diameter	D Pin Diameter	E Bushing Diameter	THD UNF	H	L	M	A
FLPB31L.62	5/16	.3125	.3130	1/2-20	.609	.62	.670	.20
FLPB43L.57	7/16	.4375	.4380	5/8-18	.747	.57	.850	.25
FLPB43L.75	7/16	.4375	.4380	5/8-18	.747	.75	.850	.25
FLPB50L.58	1/2	.5000	.5005	11/16-16	.807	.58	.845	.25
FLPB75L.70	3/4	.7500	.7505	1-12	1.115	.70	1.255	.25
FLPB75L1.10	3/4	.7500	.7505	1-12	1.115	1.10	1.255	.25
FLPB75L1.75	3/4	.7500	.7505	1-12	1.115	1.75	1.255	.25
FLPB100L1.10	1	1.0000	1.0005	11/4-16	1.370	1.10	1.224	.25

Sold in sets of (1) pin and (1) bushing.

INSTALLATION WRENCH



M CRS **H** Case Hardened **S** Black Oxide

CATALOG NUMBER	DESCRIPTION
WR-312	For 5/16" ID Bushing
WR-437	For 7/16" ID Bushing
WR-500	For 1/2" ID Bushing
WR-750	For 3/4" ID Bushing
WR-100	For 1" ID Bushing