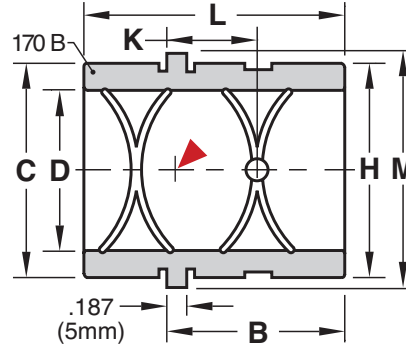


GUIDED EJECTOR BUSHINGS

SOLID BRONZE



M CA954 Solid Bronze **H** 170 Brinell

Inch Standard

▶ CAD insertion point

CATALOG NUMBER	Nominal Diameter	D +.0005 -.0000	H +.0005 -.0000	C +.000 -.001	M +.00 -.01	B	K	L +.00 -.03
GEB50	1/2	.5005	.7505	.7490	.853	1.00	.56	1.50
GEB75	3/4	.7505	1.1255	1.1240	1.302	1.00	.56	1.50
GEB87	7/8	.8755	1.2505	1.2490	1.427	1.00	.56	1.50
GEB100	1	1.0005	1.3755	1.3740	1.552	1.12	.62	1.75
GEB125	1-1/4	1.2505	1.6255	1.6240	1.802	1.12	.62	1.75
GEB150	1-1/2	1.5005	2.0005	1.9990	2.177	1.12	.62	1.75
GEB200	2	2.0005	2.5005	2.4990	2.687	1.62	.80	2.25

Metric Standard

CATALOG NUMBER	D +.013 +.026	H +.01 -.00	C -.01 -.03	M +.00 -.13	B	K	L +.0 -.8
GEBD20	20	26	26	28	25	15	37
GEBD25	25	32	32	35	29	16	45
GEBD30	30	38	38	41	29	16	45

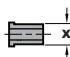
GRAPHITE PLUGGED



M CA954 with oil impregnated graphite plugs **H** 170 Brinell

CATALOG NUMBER	Nominal Diameter	D +.0005 -.0000	H +.0005 -.0000	C +.000 -.001	M +.00 -.01	B	L +.00 -.03
GGP75	3/4	.751	1.1255	1.1240	1.302	1.00	1.50
GGP87	7/8	.876	1.2505	1.2490	1.427	1.00	1.50
GGP100	1	1.001	1.3755	1.3740	1.552	1.12	1.75
GGP125	1-1/4	1.251	1.6255	1.6240	1.802	1.12	1.75
GGP150	1-1/2	1.501	2.0005	1.9990	2.177	1.12	1.75
GGP200	2	2.001	2.5005	2.4990	2.687	1.62	2.25

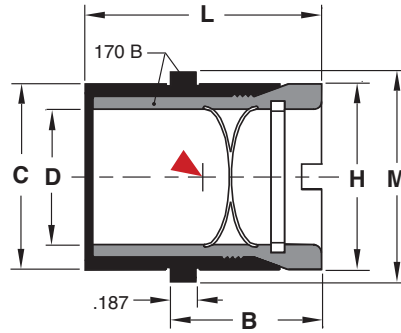
Using grease will inhibit the function of the graphite plugs. Instead, use a light 20 weight oil at startup to begin lubrication.

 For custom Bushings, refer to the templates in section X.



GUIDED EJECTOR BUSHINGS

QC™ BUSHINGS



Liner: **M** CA954 Solid Bronze **H** 170 Brinell
 Body: **M** AISI 12L14 **H** 170 Brinell **S** Black Oxide

CAD insertion point

CATALOG NUMBER	Nominal Diameter	D +.0005 -.0000	H +.0005 -.0000	C +.000 -.001	M +.00 -.01	B	L +.000 -.015
GQC50	1/2	.5005	.7505	.7490	.853	1.00	1.50
GQC75	3/4	.7505	1.1255	1.1240	1.302	1.00	1.50
GQC87	7/8	.8755	1.2505	1.2490	1.427	1.00	1.50
GQC100	1	1.0005	1.3755	1.3740	1.552	1.12	1.75
GQC125	1-1/4	1.2505	1.6255	1.6240	1.802	1.12	1.75
GQC150	1-1/2	1.5005	2.0005	1.9990	2.177	1.12	1.75

- Bushings are sold in assembly.
- Replacement liners are sold below. For additional sizes, contact Customer Service.
- To order replacement lubricating strips, specify the prefix BSHSTRP with the inner diameter. Ex: BSHSTRP-125.

M CA954 Solid Bronze **H** 170 Brinell

REPLACEMENT LINERS

INNER DIAMETER	LINER CATALOG NUMBER	FITS BUSHINGS
1/2"	BL50L1.50	GQC50
	BL75L.87	SQC75L.87
3/4"	BL75L1.37	GQC75
		SQC75L1.37
		SQC75L1.87
		SQC75L2.37
		SQC75L2.87
7/8"	BL87L.87	SQC87L.87
	BL87L1.37	GQC87
		SQC87L1.37
		SQC87L1.87
		SQC87L2.37
		SQC87L2.87

INNER DIAMETER	LINER CATALOG NUMBER	FITS BUSHINGS
1"	BL100L1.37	SQC100L1.37
	BL100L1.75	GQC100
		SQC100L1.87
		SQC100L2.37
		SQC100L2.87
SQC100L3.37		
1-1/4"	BL125L1.37	SQC125L1.37
	BL125L1.75	GQC125
		SQC125L1.87
		SQC125L2.37
		SQC125L2.87
SQC125L3.37		
1-1/2"	BL150L1.75	GQC150
		SQC150L1.87



- To order replacement lubricating strips, specify the prefix BSHSTRP with the inner diameter. Ex: BSHSTRP-125.
- References to "SQC" Shoulder Bushings are for legacy tools. For tools requiring Shoulder Bushings, please refer to pages B-10 & B-11.

M Hardened Steel

SPANNER WRENCH

CATALOG NUMBER	DESCRIPTION
SW-100	Adjustable Spanner Wrench

