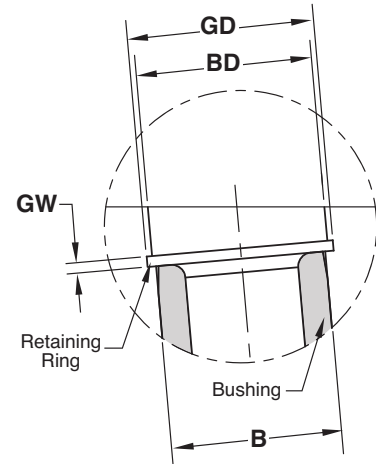
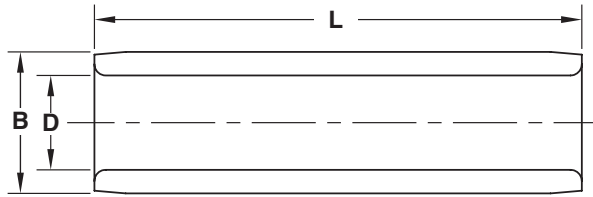


MODULIFTER™

LIFTER ROD BUSHING

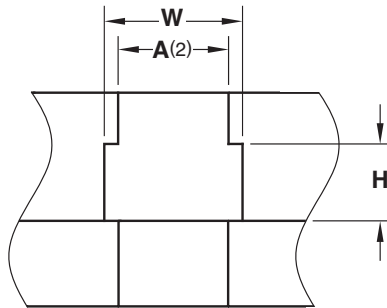


Bushings: **M** C95400 Retaining Ring: **M** Steel **S** Black Oxide

CATALOG NUMBER	D +.001 -.000	B +.0005 -.0000	L +.00 -.01	GD +.005 -.000	GW +.005 -.000	BD ±.002
MLBSH50L1.37	.5005	.750	1.375	.862	.046	.813
MLBSH63L1.37	.6255	.875	1.375	1.000	.046	.934
MLBSH75L3.37	.7505	1.125	3.375	1.262	.056	1.188
MLBSH100L4.37	1.0005	1.375	4.375	1.528	.056	1.438
MLBSH125L4.87	1.2505	1.625	4.875	1.792	.068	1.688
MLBSH150L5.87	1.5005	2.000	5.875	2.186	.086	2.063

Note: Includes (1) Retaining Ring. Replacement rings are available with pricing listed in the price list.

ROD COUPLING ASSEMBLY PLATE MACHINING OPTION



Coupling: **M** 1045 **H** 28-32 HRC **S** Nitride
 Slides: **M** C86300 (Graphite Plugs if specified)

NOMINAL ROD DIA. Ø	CATALOG NUMBER		W +.002 -.000	H ±.001	A +.010 -.000
	Non-Cooled	Cooled			
1/2	RC050	—	1.187	.788	.66
5/8	RC063	RCC063	1.310	.788	.78
3/4	RC075	RCC075	1.500	.946	.97
1	RC100	RCC100	1.781	1.024	1.21
1-1/4	RC125	RCC125	2.375	1.340	1.64
1-1/2	RC150	RCC150	2.656	1.498	1.84

Note: To order slides with Graphite Plugs, add GP to the part number as shown, Ex: RCGP050 or RCCGP125.

LIFTER ROD SPACER

M D-2 **H** 58-60 HRC

CATALOG NUMBER	OD +.00 -.01	ID +.000 -.005	T +.000 -.001
MLRS050	.500	.30	.063
MLRS063	.625	.53	
MLRS075	.750	.53	
MLRS100	1.000	.80	
MLRS125	1.250	.93	
MLRS150	1.500	.93	

