

FLEXICORE™ ACCESSORIES

WEAR BLOCKS

Inch Standard

M P-20 Pre-Hard **H** Nitrided .005" Deep

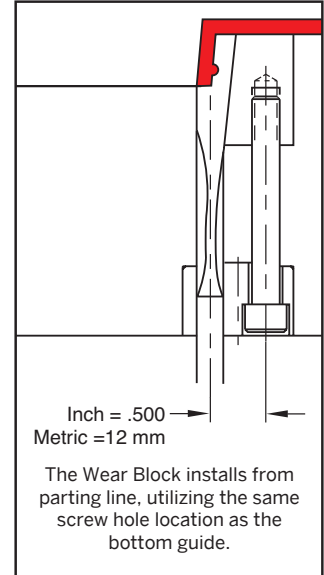
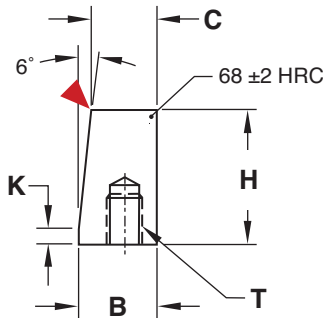
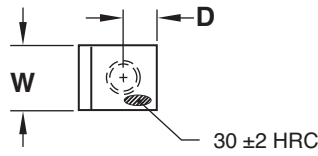
CATALOG NUMBER	W +.002 -.000	D ± .01	B +.001 -.000	C +.001 -.000	H	K	T Thread
FCWB-24	.244	.250	.626	.533	1.000	.115	#10-24
FCWB-32	.322	.250	.626	.533	1.000	.115	1/4-20
FCWB-40	.401	.250	.567	.474	1.000	.115	1/4-20
FCWB-48	.480	.250	.567	.474	1.000	.115	1/4-20

Note: FCWB-24 is designed for use with a 1/4ø shoulder bolt.

Metric Standard

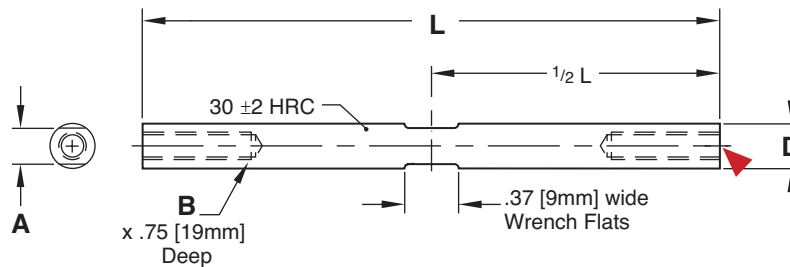
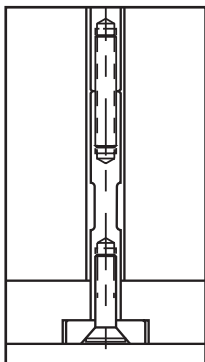
CATALOG NUMBER	W +.05 -.00	D ± .25	B +.025 -.000	C +.025 -.000	H	K	T Thread
FCWBM-6	6.2	7.2	15.9	13.55	25.4	2.9	M5-.8
FCWBM-8	8.2	7.2	15.9	13.55	25.4	2.9	M6-1
FCWBM-10	10.2	7.2	14.4	12.05	25.4	2.9	M6-1
FCWBM-12	12.2	7.2	14.4	12.05	25.4	2.9	M6-1
FCWBM-14	14.2	8.0	15.2	12.11	33.2	3.5	M6-1
FCWBM-16	16.2	8.0	15.2	12.11	33.2	3.5	M6-1

▶ CAD insertion point



FLEXICORE™ ACCESSORIES

EXTENSIONS



Inch Standard

M 4140 Pre-Hard

D +.000 -.005	B	A	L +.01 -.00	
			2"	4"
.232	#8-32	.187	FCX8L2	FCX8L4
.310	#10-24	.250	FCX10L2	FCX10L4

Includes threaded stud for attachment to FlexiCore.

Metric Standard

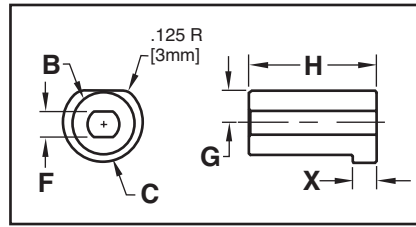
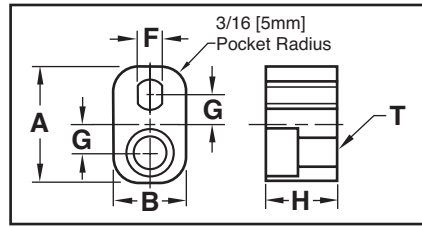
D +.00 -.12	B	A	L +.25 -.00	
			50MM	100MM
6	M4-.7	4.8	FCXM4L50	FCXM4L100
8	M5-.8	6.3	FCXM5L50	FCXM5L100

▶ CAD insertion point



FLEXICORE™ ACCESSORIES

REPLACEMENT GUIDES



Inch/Metric Standard

M CA954 Solid Bronze

CATALOG NUMBER	A	B	H	F	G	T
FCBG-24	1.000	.625	.625	.190	.250	1/4-20
FCBG-32	1.000	.625	.625	.200	.250	1/4-20
FCBG-40	1.000	.625	.625	.290	.250	1/4-20
FCBG-6	25	16	16	4.8	6	M6-1
FCBG-8	25	16	16	5.0	6	M6-1
FCBG-10	25	16	16	7.3	6	M6-1

Inch/Metric Standard

M CA954 Solid Bronze

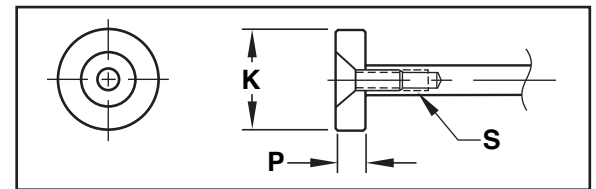
CATALOG NUMBER	B	C	H	F	X	G
FCRG-24	.5000	.625	1.000	.190	.187	.250
FCRG-32	.5000	.625	1.000	.200	.187	.250
FCRG-40	.6250	.750	1.000	.290	.187	.312
FCRG-6	12	16	25	4.8	5	6
FCRG-8	12	16	25	5.0	5	6
FCRG-10	16	20	25	7.3	5	8

Inch/Metric Standard

M 4140 Pre-Hard **S** Black Oxidized

CATALOG NUMBER	K	P	S
FCHP-8	.61	.188	#8-32
FCHP-10	.61	.188	#10-24
FCHP-4	16	4	M4-.7
FCHP-5	16	4	M5-.8

REPLACEMENT HEEL PLATES

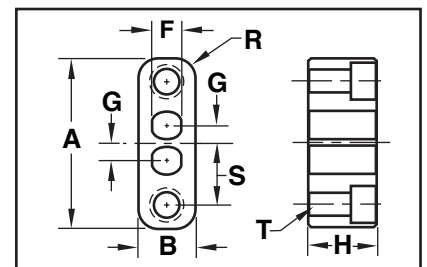


Screw included.

Inch/Metric Standard

M CA954 Solid Bronze

CATALOG NUMBER	A	B	H	F	G	R	S	T
FCDBG-24	1.750	.625	.750	.190	.136	.218	.636	1/4-20
FCDBG-48	1.875	.625	.750	.290	.176	.218	.676	1/4-20
FCDBG-6	45	16	20	4.8	3.5	5	15.5	M6-1
FCDBG-12	48	16	20	7.3	4.5	5	16.5	M6-1

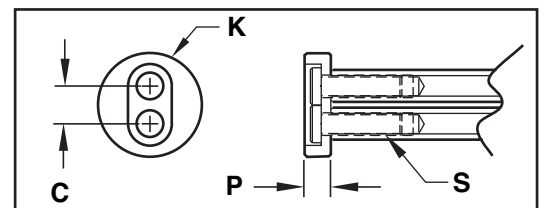


Inch/Metric Standard

M 4140 Pre-Hard **S** Black Oxidized

CATALOG NUMBER	C	K	P	S
FCDHP-8	.272	.750	.188	#8-32
FCDHP-10	.352	.875	.188	#10-24
FCDHP-4	7	20	6	M4-.7
FCDHP-5	9	22	6	M5-.8

REPLACEMENT HEEL PLATES: DOUBLE ACTUATION



Screws included.