

7.

INSTALL THE GASKET AND LENS

- > Insert the wall plugs
(required for concrete tanks only)
- > Put the **blue rubber gasket** back into place - check that it is aligned with the center hole and fixing holes
- > Insert the white **plastic lens**, with the **rubber O-ring facing up**



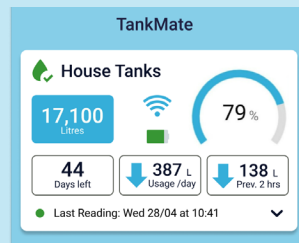
IMPORTANT

- Press the **READ** button underneath the sensor before fixing it down onto the tank. Check the **LED** status:
- > Blinking green, then solid BLUE: connected to the network
 - > Blinking ORANGE: ready to be positioned (10 sec.)

8.

SECURE THE TANKMATE SENSOR

- > While the status light is blinking ORANGE, place the sensor onto the tank, on top of the gasket
- > **Wait 20 seconds**, then **refresh** the **TankMate app** (swipe down)
- > Check that an initial level reading was recorded (reading date / time in app)
- > Secure the sensor with 4 x stainless screws provided - do not overtighten



You have now completed the TankMate sensor installation!



USING YOUR TANKMATE SENSOR

See the full instructions here: <https://tankmate.gitbook.io/>

- > The default sensor reading frequency is **2 times per day** (every 12 hours). This can be customised in the app: Settings > Sensor Settings
- > The sensor will **now send data online via your Wi-Fi network**. There is no direct connection between your mobile phone and the sensor
- > To get a reading at any time - use the **blue magnet supplied** to wake up the sensor. See digital guide (link above).

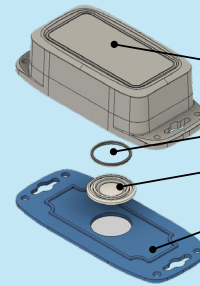


QUICK START GUIDE

TankMate TMR3W Tank Level Sensor



WHAT'S IN THE BOX:



- 1 1 x TMR3 Tank Level Sensor
- 2 1 x O-ring
- 3 1 x Lens
- 4 1 x Blue rubber gasket
- 5 4 x 1" fixing screws
- 6 4 x Masonry wall plugs
- 7 1 x Magnet (to wake up sensor)

1.

ACCOUNT / APP SETUP

- > Download the iOS or Android app from your app store
- > **Sign Up** to create your **TankMate** account



NOTE The sensor should only be added to one account. Additional app users should sign in using the same email login / password.

2.

ADD A TANKMATE SENSOR

- > Select the **R3** product option from the app setup screen
- > Take the sensor out of the packaging, and remove the blue rubber gasket from the base
- > **Scan the QR code** located underneath your TankMate sensor
- > Follow the prompts in the app to **connect the sensor to your Wi-Fi network**



NOTE To troubleshoot issues with Wi-Fi connectivity, or for more detailed setup instructions, read the docs: <https://tankmate.gitbook.io/>

3.

ENTER YOUR TANK DIMENSIONS

- > Follow the prompts in the app to select the correct volume, tank quantity and overflow height. **These can be edited later.**
- > **Multiple connected tanks** can be monitored with one sensor, however the measured volume will only be accurate if the tanks are balanced (keep the same level)
- > The **Sensor Height** will need to be measured during installation. See section 6.

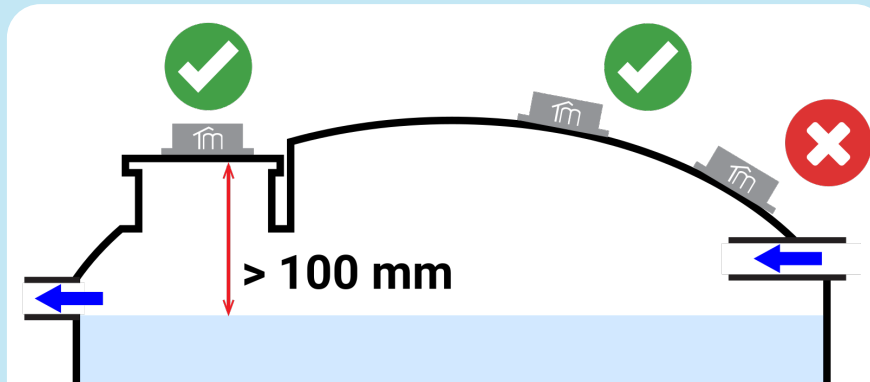
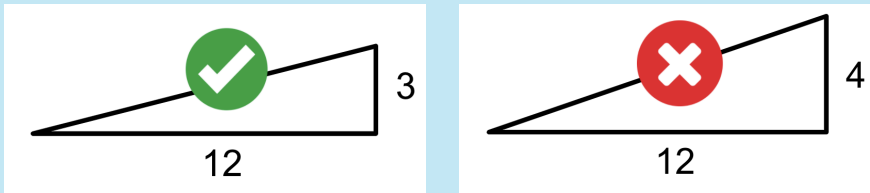
4.

POSITIONING THE TANKMATE SENSOR

The position of the sensor is critical to ensure accurate readings can be taken.

The sensor must:

- > Be at least **100mm** above the maximum fill height (overflow height)
- > Have a clear **line-of-sight** to the water surface. There should be no pipework or other obstructions in the way
- > Be at least **300 mm** away from the tank **side wall**
- > **Not** be on a **slope greater than 3/12** (15 degrees)
- > Be within range of your Wi-Fi network



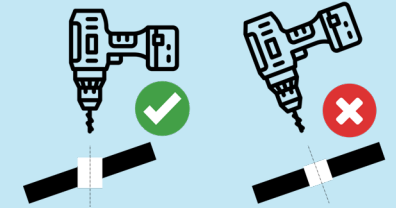
TOOLS REQUIRED

- > **Ø30mm hole** saw / spade drill bit (poly tanks); **OR** 30mm diamond core drill (concrete tanks)
- > **Ø3mm drill bit** (poly tanks); **OR** 6mm masonry drill bit (concrete)
- > Power drill / 18V brushless battery drill
- > #2 Phillips screwdriver

5.

TANK PREPARATION

- > **Drill a Ø30mm hole** in the tank lid / roof
- > For thicker tank materials (e.g. concrete), ensure that the hole is drilled vertically



- > Place the **blue rubber gasket** onto the tank lid/roof - align the center hole with the 30mm hole you have drilled
- > **Mark** the position of the **4 fixing holes** with a permanent marker
- > Remove the rubber gasket
- > **Drill the 4 fixing holes:**
 - 3mm for poly tanks
 - 6mm for concrete



6.

SET THE SENSOR HEIGHT IN THE APP

- > Use a tape measure to measure the distance from the tank **mounting surface** (roof / lid) to the floor of the tank
- > In the mobile app, open: **Settings > Tank Settings**
- > Set a **Sensor Height** to match the distance you have just measured (m)
- > **SAVE** the Tank Settings in the app

