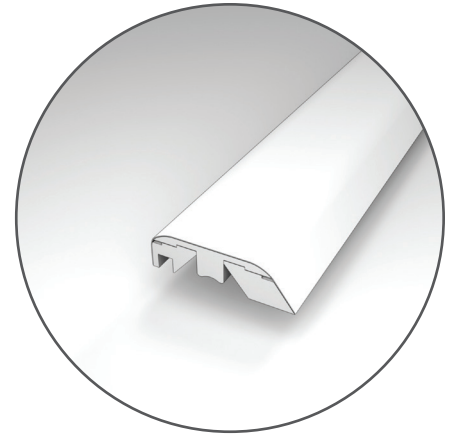
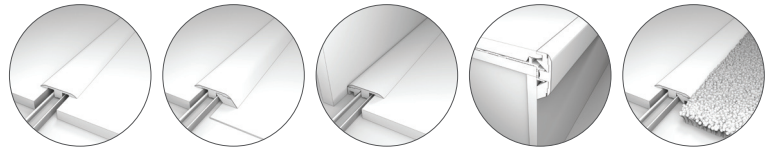


## 5-in-1 Multifunctional Transition

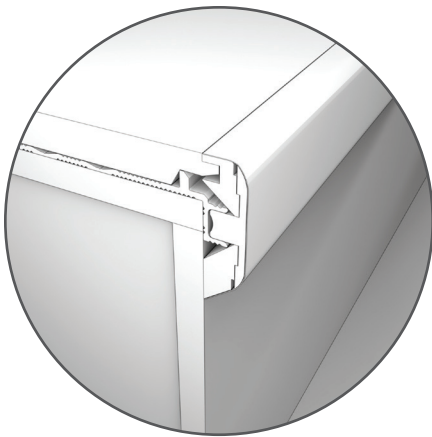
The 5-in-1 laminate floor molding can be used in multiple applications to complete your flooring installation. This innovative, multipurpose profile provides five coordinating trims with less waste and fewer pieces than traditional individual transition moldings. The t-molding is used to transition between flooring of equal heights and in doorways. The hard surface reducer connects two floors of different heights. The end molding can be used to finish flooring where it meets sliding glass doors or vertical surfaces like a fireplace hearth. The carpet reducer transitions between your hard surface floor and carpet. The stair nose application can be used to finish your stairs or step-down areas with the use of a separate, metal sub-profile. To beautifully complete your room, our trims and moldings receive the same meticulous attention to detail as our flooring.



These durable, pre-finished moldings coordinate beautifully in design and texture with floors, no painting or staining required.



Inventory Style Name	Length	Width	Height	Core Material	Surface Materials
MINC5	84.6"	1.87"	0.51"	MDF	Highly Wear-Resistant, Aluminum Oxide Coated PVC



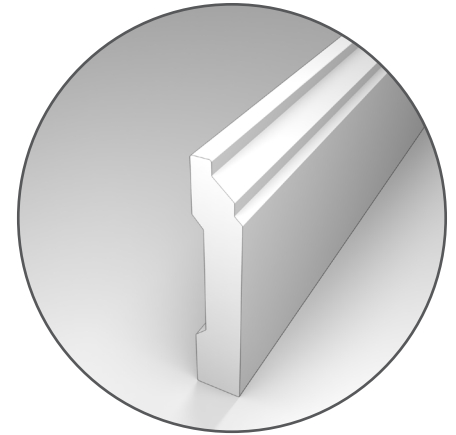
## 5-in-1 Stair Nose Track

For a beautiful finished look, the 5-in-1 multifunctional molding can be used as a stair nose coordinating with the laminate planks that cover your steps. Simply install this aluminum stair nose track and click the molding into place for a secure fit. The stair nose track comes with a 2mm shim that raises the plank to the appropriate height of the stair nose molding.

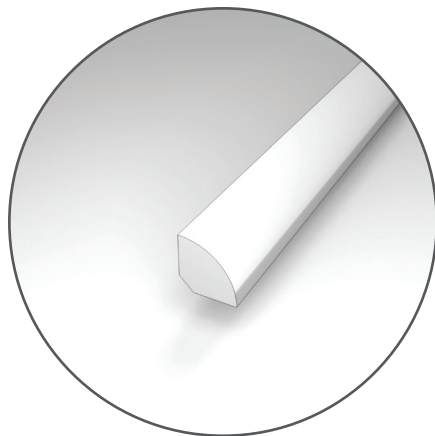
Inventory Style Name	Length	Width	Height	Core Material
5BASE	84.6"	2.79"	0.83"	Aluminum

## Wall Base

Wall Base moldings offer an easy solution to cover the expansion space required when installing floating floors. Simply place on top of your flooring along the wall or wall base and screw or nail into place in accordance with instructions for a secure and long-lasting installation. Pair with quarter round in a coordinating design for a beautifully finished look.



Inventory Style Name	Length	Width	Height	Core Material	Surface Materials
RMBSP	94.5"	0.625"	3.36"	MDF	Highly Wear-Resistant, Aluminum Oxide Coated Laminate

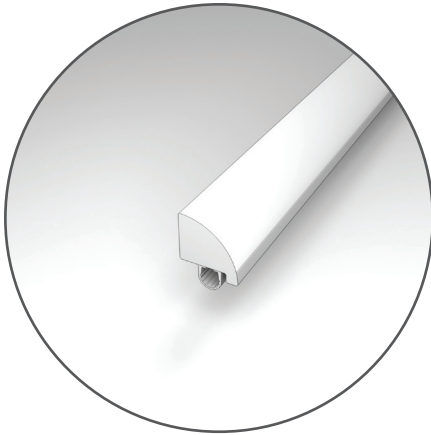


## Quarter Round

Quarter round offers an easy solution to cover the expansion space required when installing floating floors. Simply place on top of your flooring along the wall or wall base and nail or glue into place in accordance with instructions for a secure and long-lasting installation.

These durable, pre-finished moldings coordinate beautifully in design and texture with floors, no painting or staining required.

Inventory Style Name	Length	Width	Height	Core Material	Surface Materials
MQND	94.5"	0.62"	0.75"	MDF	Highly Wear-Resistant, Aluminum Oxide Coated Laminate



## Paintable White Waterproof Quarter Round

Paintable white waterproof quarter round is an easy and innovative solution designed for waterproof floors, covering the necessary expansion gap and providing a water-tight perimeter seal. Simply place on top of your flooring along the wall or wall base and nail or glue into place in accordance with instructions for a secure and long-lasting installation.

These durable moldings can be left white or painted to coordinate beautifully with any decor.

Inventory Style Name	Length	Width	Height	Core Material	Surface Materials
WPQR	94.5"	0.62"	0.75"	PVC	Highly Wear-Resistant, Aluminum Oxide Coated Laminate